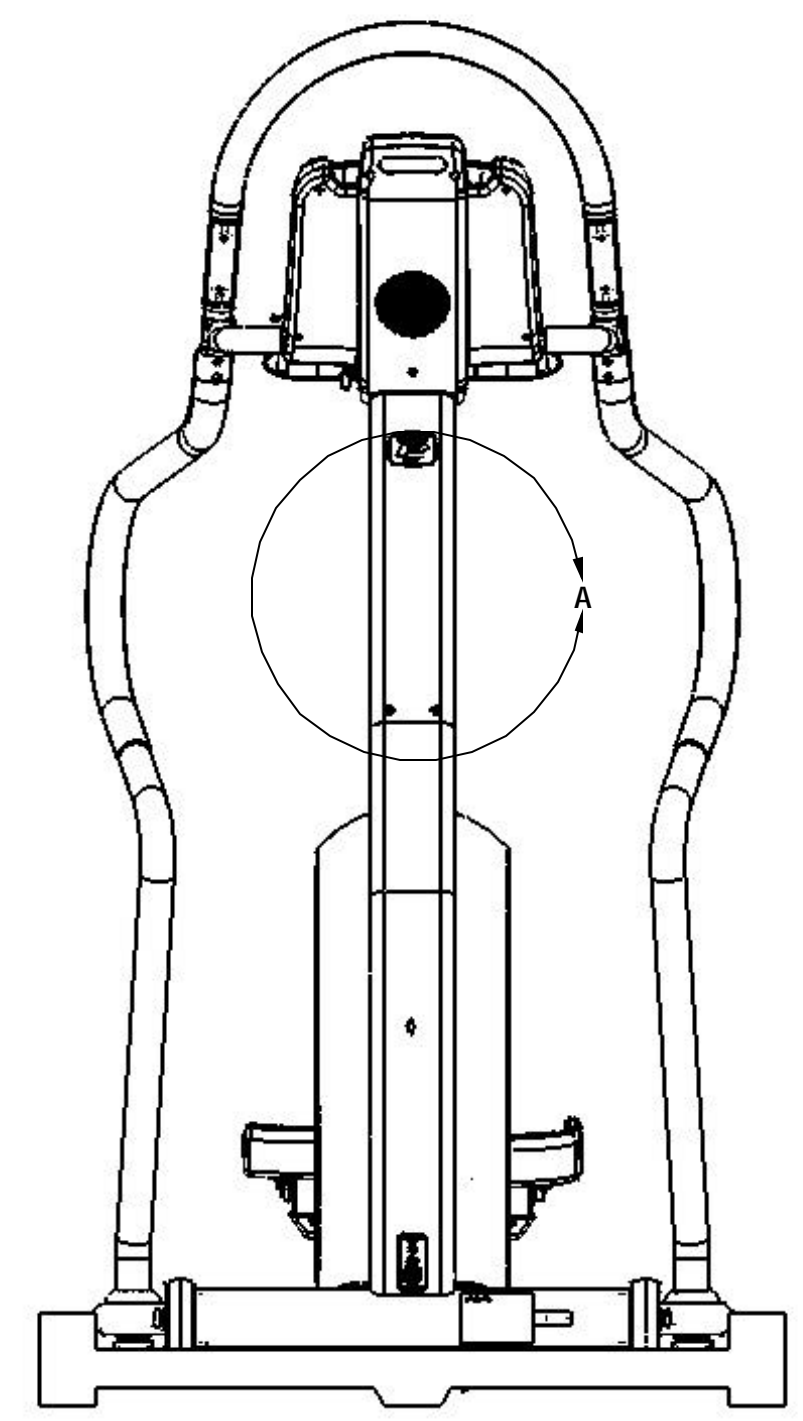
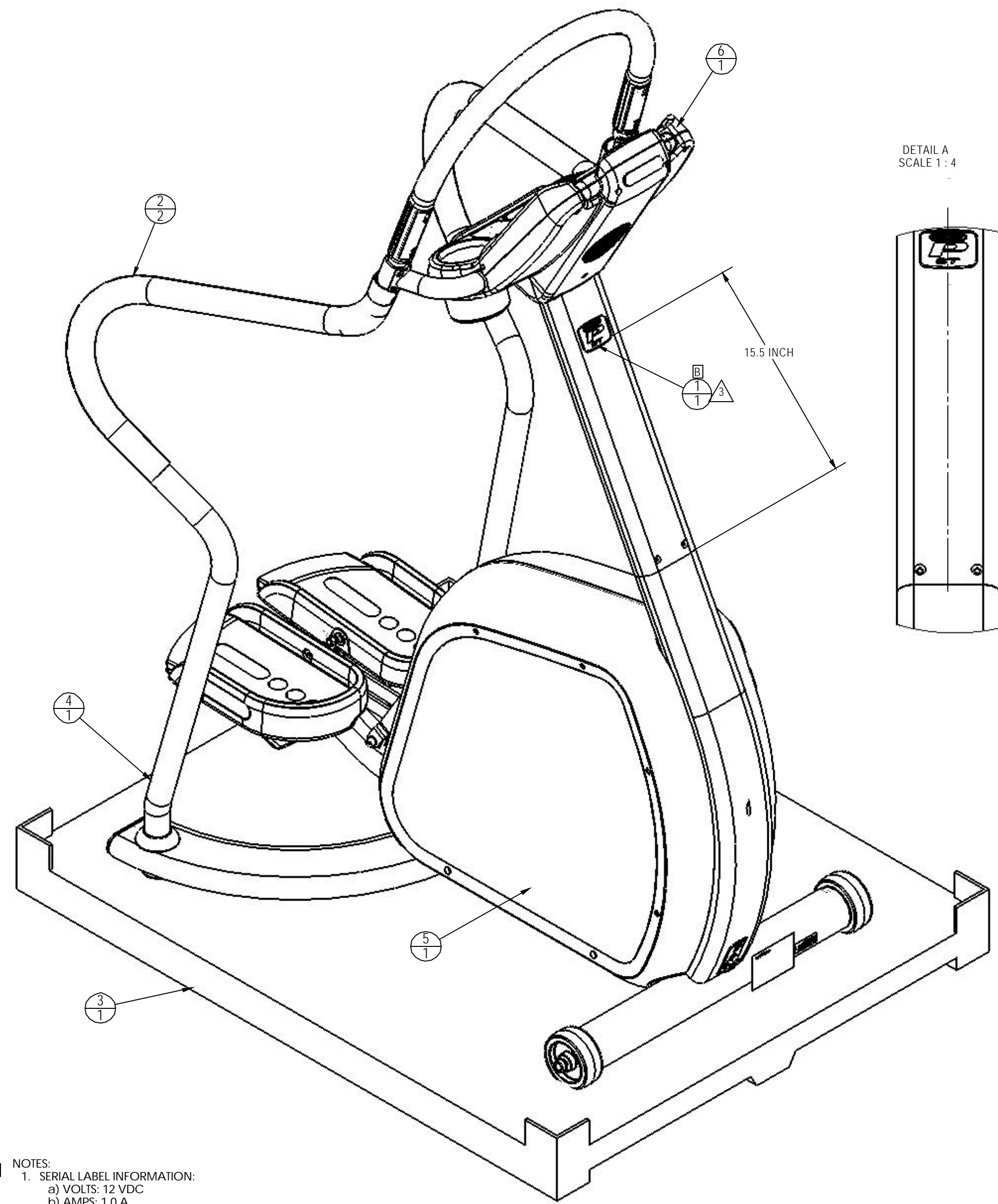


REVISIONS				
REV.	DATE	DESCRIPTION	ECO	BY
A	04-18-07	PRODUCTION RELEASE	11572	DN
B	06-14-07	ADDED BADGE PN 050-2092, CHANGED TO C SIZE FOR ASSY, ADDED NOTES	11649	DN



- NOTES:**
- SERIAL LABEL INFORMATION:
 - VOLTS: 12 VDC
 - AMPS: 1.0 A
 - CYCLES: N/A
 - WATTS: 12 W
 - PHASE: N/A
 - IPX #: IPX 1
 - CERTIFICATION LOGOS:
 - CSA
 - CE
- 3** CLEAN AREA WITH ISOPROPYL ALCOLHOL PRIOR TO PLACING BADGE.

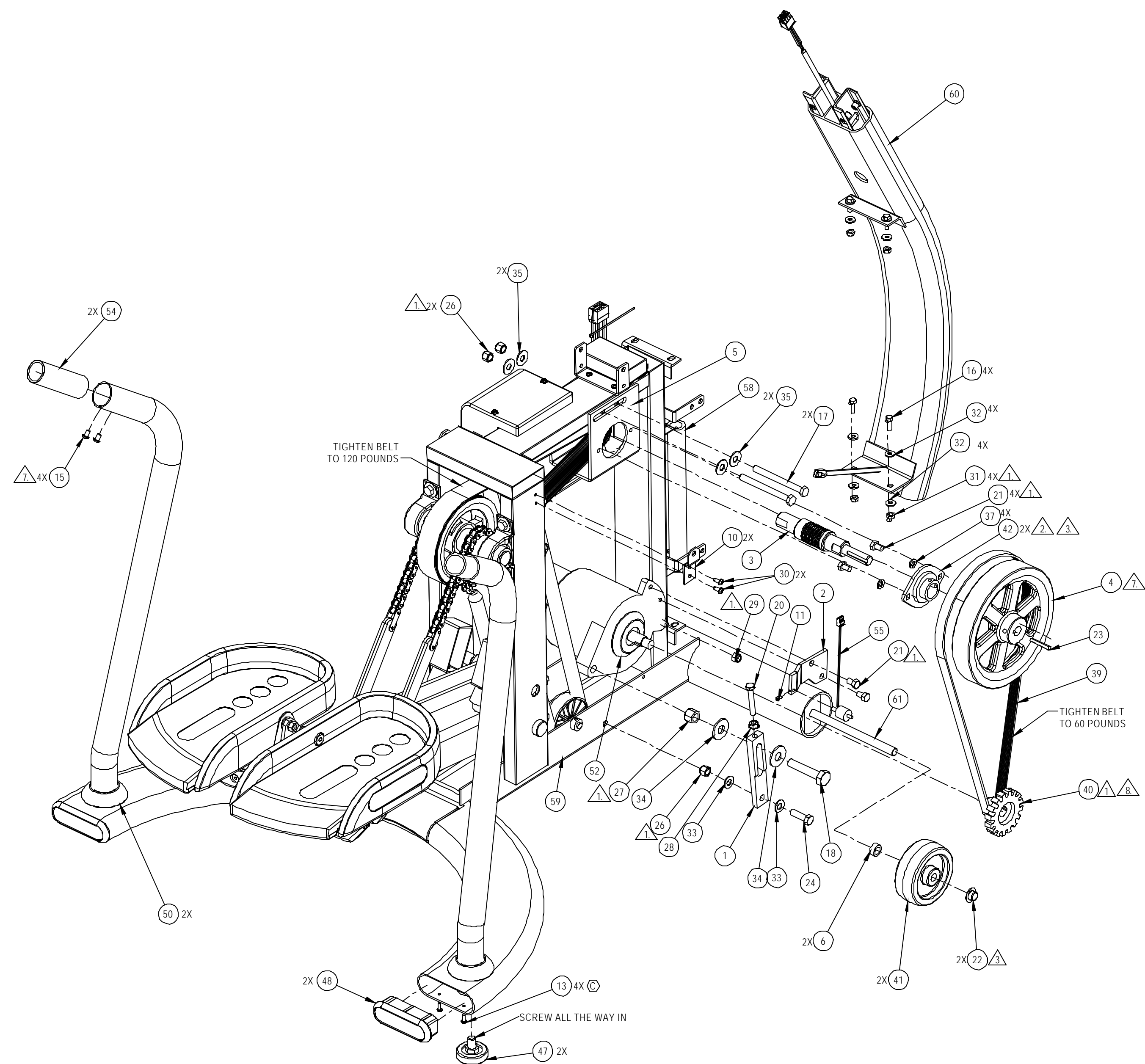
**DOCUMENT STATUS:
RELEASE**

NOTICE OF PROPRIETARY INFORMATION
THIS DOCUMENT SHALL NOT BE REPRODUCED NOR SHALL THE INFORMATION CONTAINED HEREIN BE USED BY OR DISCLOSED TO OTHER EXCEPT AS EXPRESSLY AUTHORIZED BY UNISEN

ITEM NO.	PART NUMBER	DESCRIPTION	QTY.	NOTE
B 1	050-2092	BADGE, PRODUCT, P-ST	1	
2	710-1072	ASSY, SIDE TUBE, DIPPED	2	
3	711-3202	KIT, PACKAGING, 5100 STEPPER	1	
4	711-3213	ASSY, STEP BASE, P-ST	1	
5	711-3214	KIT, SHROUD, P-ST	1	
6	711-3216	ASSY, CONSOLE/HNDLBAR, P-ST	1	

MATERIAL SEE BOM		FINISH NA		VENDOR:		P/N:		<small>TOLERANCES UNLESS OTHERWISE SPECIFIED</small> X.XXX ± 0.10" (0.25MM) ANGLES ± 0.2° X.XX ± 0.030" (0.76MM) FRACTIONS ± 1/32 X.X ± 0.050" (1.27MM) X ± 0.125" (3.20MM)		UNISEN, INC. DBA STAR TRAC 14410 Myford Road Irvine CA 92606	
DRAWN: D NGO		DATE: 06-06-07		INITIAL:		PART NO:		REV:		9-5130-MINTPO B	
CHECKED:		APPROVED:		U.O.M.:		MM		SCALE: 1:10		SHEET 1 OF 1 SHEET SIZE: C	

REVISIONS				
REV.	DATE	DESCRIPTION	ECO	BY
A	4/3/07	PRODUCTION RELEASE	11566	DN
B	3/5/08	ADD P/N: 140-0200; CHANGE P/N: 140-0210 QTY. IS 4, WAS 2; ADD WIRING TIE STRAP DETAIL ON SHEET 2 OF 2	11811	RKL
C	04-29-09	UPDATE PRINT AND NOTES TO CURRENT INFORMATION; CHG BOM QTY FOR P/N: 140-0490 & 140-0292 TO: LINEAR FEET; ADD P/N: 110-0285 QTY 4	12089	SCN

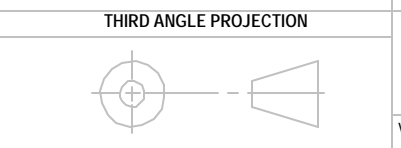


ITEM NO.	PART NO.	DESCRIPTION	QTY.
1	020-0021	BRACKET, ALTERNATOR ADJUST	1
2	020-0023	BRACKET, RPM SENSOR/ALTERNATOR	1
3	020-0141	SHAFT/PULLEY,16J130 STP	1
4	020-0681	FLYWHEEL, 8.0" OD X .625" ID	1
5	020-0690	BRACKET, ADJUSTABLE	1
6	020-4604	SPACER, 1/2 ID X 3/4 OD X .31L	2
7	020-6748	COVER, LCB GUARD, STEPPER	1
8	020-6831	BRACKET, SHROUD MOUNT, STEP	1
9	020-6858	BRACKET, SHROUD, STEP-2	2
10	020-6859	BRACKET, SHROUD, STEP-3	2
11	110-0132	SCREW, #6-32x1/4,SHC,HK,AS,NP	1
12	110-0280	SCREW, #6-32x7/8,PHM,SL,CS,ZI	2
13	110-0285	SCREW, #8-18x1/2,PHT-AB,PH,SS	4
14	110-0501	SCREW, 1/4-20x3.25,HHC,CS,ZP	1
15	110-0506	SCREW, 1/4-28X3/8 BHSS SS BLKOX	4
16	110-0570	SCREW, 1/4-20x3/4,HHC,HE,CS,ZP	4
17	110-0601	SCREW, 3/8-16x4.0,SHC,HE,CS,ZP	2
18	110-0610	BOLT, 1/2-13x2.5,HHC,HE,CS,ZI	1
19	110-0652	BOLT, 5/16-18x4.0,HHC,HE,CS,ZP	1
20	110-0686	BOLT, 5/16-18 X 2.0" HHCS FULLTHRD	1
21	110-0687	SCREW, 5/16-18x1/2,HHC,HE,CS,Z	6
22	110-1415	CAP, 1/2 PUSH ON	2
23	110-1442	KEY,MACHINE 3/16X3/16X1.5"	1
24	110-1530	SCREW, 3/8-16x1.25,HHC,HE,CS,Z	1
25	110-1740	NUT, 6-32, KEP	2
26	110-1830	NUT, 3/8-16, NYLOK HEX	3
27	110-1833	NUT, 1/2-13, NYLOK HEX	1
28	110-1870	NUT, 5/16-18 KEPS	1
29	110-1871	NUT, 5/16-18, NYLOC	1
30	110-3026	SCREW, 10-24X.50" PPHTC	16
31	110-3098	NUT, 1/4-20, HEX, NYLOC	4
32	120-0410	WASHER, 1/4, SAE FLAT	9
33	120-0460	WASHER, 3/8, SAE FLAT	2
34	120-0462	WASHER, 1/2"FLAT 9/16ID 1-3/8OD	2
35	120-0463	WASHER, 3/8 X 1 OD	4
36	120-0480	WASHER, 5/16 ID, 7/8 OD, .087 THK	1
37	120-0495	WASHER, 5/16, SPLIT LOCK	4
38	120-0800	SPACER, #6, 1/4"ODx1/2" L, NY	2
39	130-0123	BELT, 450J7 POLY VEE	1
40	130-1302	DRIVE PULLEY,7J130 STEPPER	1
41	130-1694	WHEEL, 4.0" OD X 0.5" BORE	2
42	130-7008	FLANGE BEARING ASSY, 1"	2
43	140-0200	TIE STRAP, 5"	2
44	140-0210	TIE STRAP, 3.5"	4
45	140-0490	TAPE, VELCRO HOOKS	0.5-FT
46	140-0492	TAPE, VELCRO LOOPS	0.5-FT
47	140-3247	LEVELER, FEET ADJUSTMENT	2
48	140-3310	END CAP, STEP, BASE	2
49	140-3325	TIE MT, 2-WAY EXT, .18" TIE	2
50	140-3347-05	BOOT, HANDRAIL, STEPPER	2
51	170-0688	BRACKET, RESISTOR	4
52	260-0182	ALTERNATOR, MONDO	1
53	580-0275	BATTERY, 6V NP	1
54	710-0521	INSERT, SIDERAIL, UNIVERSAL	2
55	711-0225	RPM SENSOR COIL ASSY,STEPPER	1
56	711-3162	ASSY, LCB, STEPPER	1
57	711-3166	CABLE, ALT AND LCB, VLAD, STEP, 5100	1
58	711-3167	CABLE, RESISTOR, STEPPER	1
59	711-3193	KIT, STEP, FRAME, 5100	1
60	711-3212	ASSY, BASE NECK, P-ST	1
61	715-3430	AXLE, ELEVATION, PRO TR	1

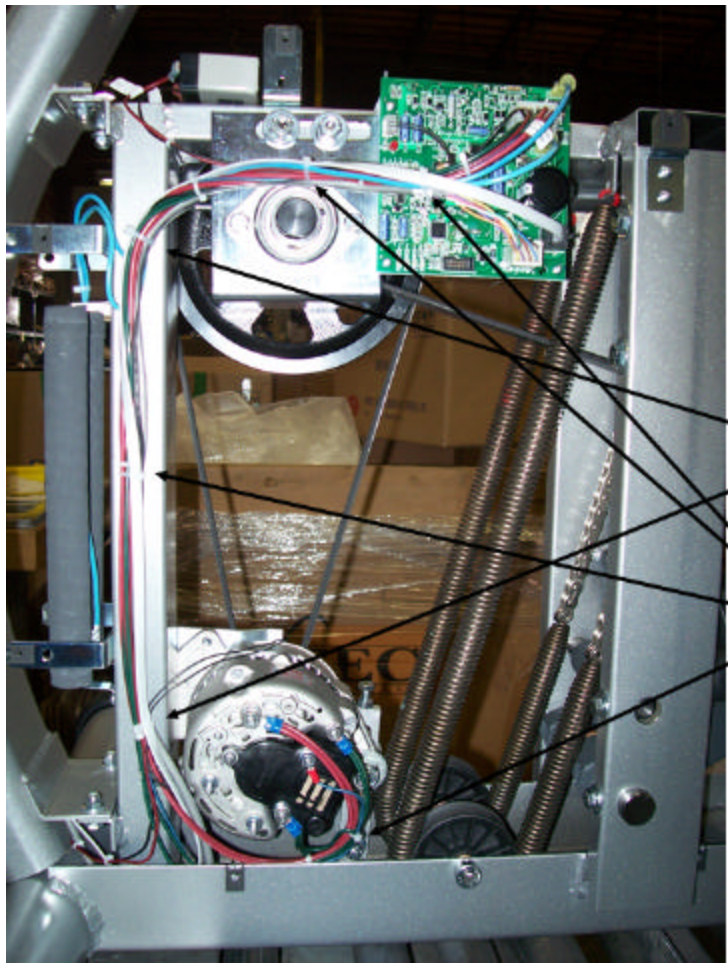
- NOTES: (C)
- 1. TORQUE TO 120 IN-LB/ 10 FT-LB/ 13.6 Nm
 - 2. ON THE FLYWHEEL SIDE, MOUNT BEARING ON INSIDE OF BRACKET. THE SET SCREW SIDE OF THE BEARING SHOULD BE DIRECTED TOWARDS THE FLYWHEEL.
 - 3. APPLY LOCTITE 222 (PURPLE), AND TORQUE TO BEARING MANUFACTURE SPECIFICATION
 - 4. CUT P/N: 140-0490 & 140-0492 TO 3" STRIPS
 - 5. BEFORE COVER IS ATTACHED TO THE LCB BOARD, THE RPM, MAIN I/O, RESISTOR, AND ALTERNATOR HARNESS MUST BE ATTACHED.
 - 6. CABLE HARNESS CONNECTS TO: LCB, BATTERY, ALTERNATOR, AND TO THE PLATE ON THE BASE OF THE NECK ASSEMBLY.
 - 7. TORQUE TO 75 IN-LB/ 6.3 FT-LB/ 8.5 Nm
 - 8. ADJUST A GAP OF 0.020" IN-BETWEEN 711-0225 PIN TO 130-1302 TOOTH

**DOCUMENT STATUS:
RELEASE**

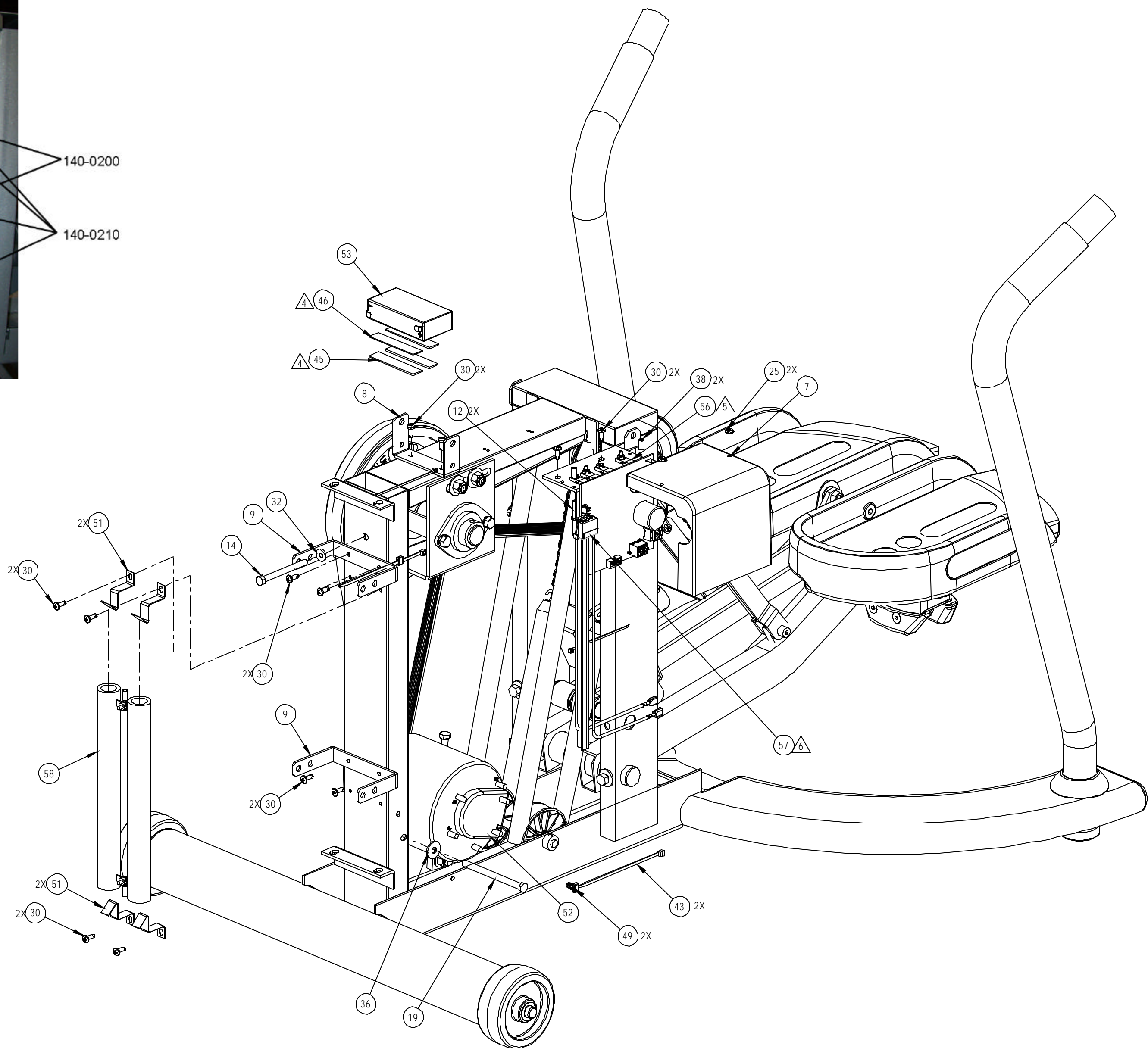
NOTICE OF PROPRIETARY INFORMATION
THIS DOCUMENT SHALL NOT BE REPRODUCED NOR SHALL THE INFORMATION CONTAINED HEREIN BE USED BY OR DISCLOSED TO OTHER EXCEPT AS EXPRESSLY AUTHORIZED BY UNISEN INC. D.B.A. STAR TRAC.



MATERIAL SEE BOM		<small>UNLESS OTHERWISE SPECIFIED DIMENSIONS ARE IN INCHES. TOLERANCES ARE:</small>		UNISEN, INC. DBA 14410 Myford Road Irvine CA 92606	
FINISH SEE NOTE		<small>DECIMALS X = ±.13 XX = ±.05 XXX = ±.03 X.XXX = ±.010</small>		STAR TRAC PART NO. 711-3213	
VENDOR: _____ PIN: _____		DRAWN: DNGO DATE: 03-20-07		REV: C	
		CHECKED: _____		TITLE: ASSY, STEP BASE, P-ST	
		APPROVED: _____		SCALE: 1:5 SHEET 1 OF 2 SHEET SIZE: C	



43 44 9. DIAGRAM 1



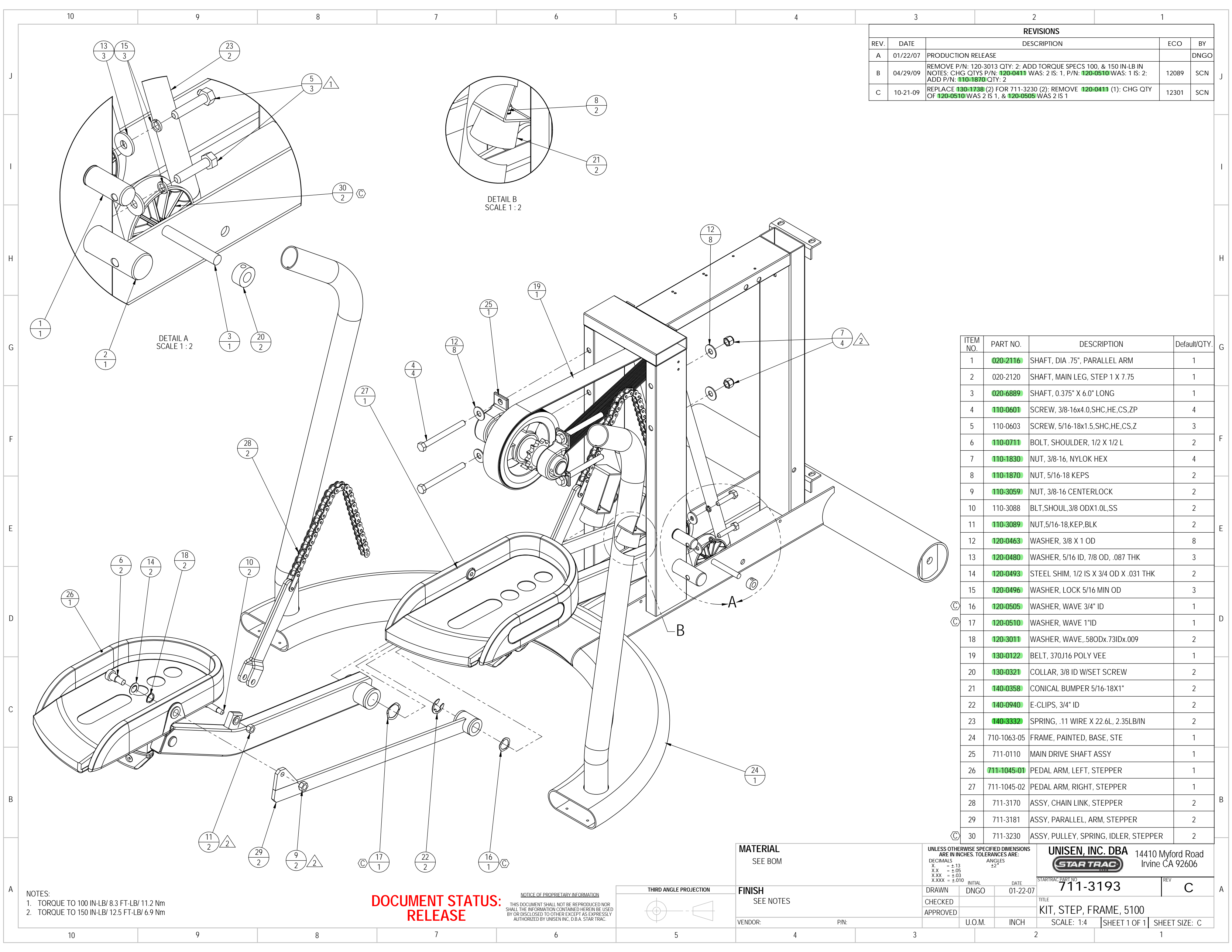
NOTES:

9. DIAGRAM 1 SHOWS THE LOCATION OF THE TIE STRAP INSTALLATION OF P/N: 140-0200 & 140-0210

UNISEN, INC. DBA 14410 Myford Road
 STAR TRAC Irvine CA 92606

STARTRAC PART NO	REV
711-3213	C
TITLE	
ASSY, STEP BASE, P-ST	
SCALE: 1:4	SHEET 2 OF 2
SHEET SIZE: C	

REVISIONS				
REV.	DATE	DESCRIPTION	ECO	BY
A	01/22/07	PRODUCTION RELEASE		DNGO
B	04/29/09	REMOVE P/N: 120-3013 QTY: 2; ADD TORQUE SPECS 100, & 150 IN-LB IN NOTES; CHG QTY'S P/N: 120-0411 WAS: 2 IS: 1, P/N: 120-0510 WAS: 1 IS: 2; ADD P/N: 110-1870 QTY: 2	12089	SCN
C	10-21-09	REPLACE 130-1738 (2) FOR 711-3230 (2); REMOVE 120-0411 (1); CHG QTY OF 120-0510 WAS 2 IS 1, & 120-0505 WAS 2 IS 1	12301	SCN

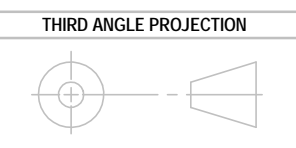


ITEM NO.	PART NO.	DESCRIPTION	Default/QTY.
1	020-2116	SHAFT, DIA .75", PARALLEL ARM	1
2	020-2120	SHAFT, MAIN LEG, STEP 1 X 7.75	1
3	020-6889	SHAFT, 0.375" X 6.0" LONG	1
4	110-0601	SCREW, 3/8-16x4.0,SHC,HE,CS,ZP	4
5	110-0603	SCREW, 5/16-18x1.5,SHC,HE,CS,Z	3
6	110-0711	BOLT, SHOULDER, 1/2 X 1/2 L	2
7	110-1830	NUT, 3/8-16, NYLOK HEX	4
8	110-1870	NUT, 5/16-18 KEPS	2
9	110-3059	NUT, 3/8-16 CENTERLOCK	2
10	110-3088	BLT, SHOUL, 3/8 ODX 1.0L, SS	2
11	110-3089	NUT, 5/16-18, KEP, BLK	2
12	120-0463	WASHER, 3/8 X 1 OD	8
13	120-0480	WASHER, 5/16 ID, 7/8 OD, .087 THK	3
14	120-0493	STEEL SHIM, 1/2 IS X 3/4 OD X .031 THK	2
15	120-0496	WASHER, LOCK 5/16 MIN OD	3
16	120-0505	WASHER, WAVE 3/4" ID	1
17	120-0510	WASHER, WAVE 1"ID	1
18	120-3011	WASHER, WAVE, .580Dx.73IDx.009	2
19	130-0122	BELT, 370J16 POLY VEE	1
20	130-0321	COLLAR, 3/8 ID W/SET SCREW	2
21	140-0358	CONICAL BUMPER 5/16-18x1"	2
22	140-0940	E-CLIPS, 3/4" ID	2
23	140-3332	SPRING, .11 WIRE X 22.6L, 2.35LB/IN	2
24	710-1063-05	FRAME, PAINTED, BASE, STE	1
25	711-0110	MAIN DRIVE SHAFT ASSY	1
26	711-1045-01	PEDAL ARM, LEFT, STEPPER	1
27	711-1045-02	PEDAL ARM, RIGHT, STEPPER	1
28	711-3170	ASSY, CHAIN LINK, STEPPER	2
29	711-3181	ASSY, PARALLEL, ARM, STEPPER	2
30	711-3230	ASSY, PULLEY, SPRING, IDLER, STEPPER	2

NOTES:
 1. TORQUE TO 100 IN-LB/ 8.3 FT-LB/ 11.2 Nm
 2. TORQUE TO 150 IN-LB/ 12.5 FT-LB/ 6.9 Nm

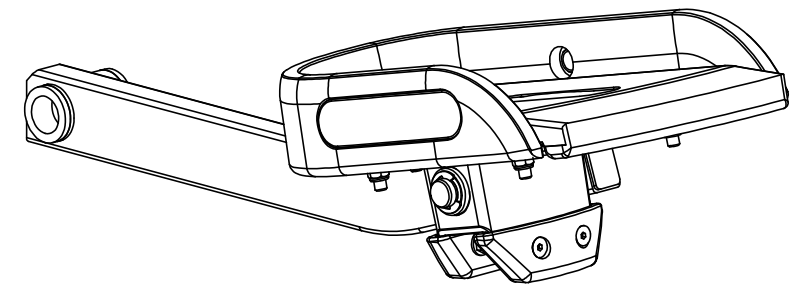
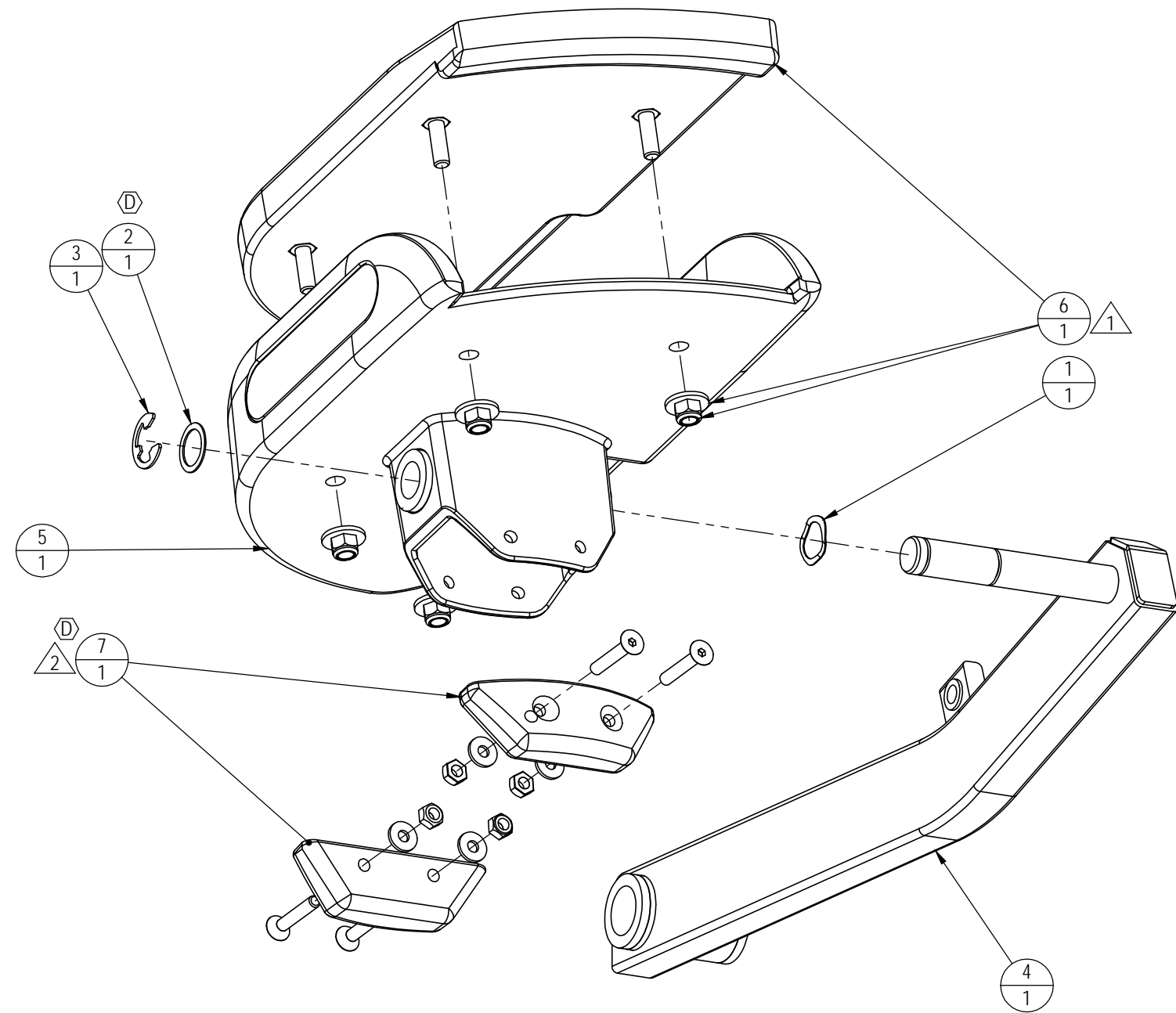
**DOCUMENT STATUS:
RELEASE**

NOTICE OF PROPRIETARY INFORMATION
 THIS DOCUMENT SHALL NOT BE REPRODUCED NOR SHALL THE INFORMATION CONTAINED HEREIN BE USED BY OR DISCLOSED TO OTHER EXCEPT AS EXPRESSLY AUTHORIZED BY UNISEN, INC. D.B.A. STAR TRAC.



MATERIAL SEE BOM		UNLESS OTHERWISE SPECIFIED DIMENSIONS ARE IN INCHES. TOLERANCES ARE: DECIMALS X = ±.13 XX = ±.05 XXX = ±.03 X.XXX = ±.010		UNISEN, INC. DBA 14410 Myford Road Irvine CA 92606	
FINISH SEE NOTES		INITIAL	DATE	STARTRAC PART NO	REV
VENDOR:		DNGO	01-22-07	711-3193	C
P/N:		CHECKED		TITLE	
		APPROVED		KIT, STEP, FRAME, 5100	
		U.O.M.	INCH	SCALE: 1:4	SHEET 1 OF 1 SHEET SIZE: C

REVISIONS				
REV.	DATE	DESCRIPTION	ECO	BY
A	9/27/05	PRODUCTION RELEASE	11349	FP
B	8/16/06	ADD P/N: 120-0505 , 120-3015 , 140-0940 ; DELETE P/N: 711-3175	11476	FJM
C	04-29-09	ADD TORQUE SPEC OF 120 IN-LB TO NOTE 1.	12089	SCN
D	10-21-09	CHG QTY OF 120-3015 WAS 2 IS 1; ADD NOTE #2	12301	SCN

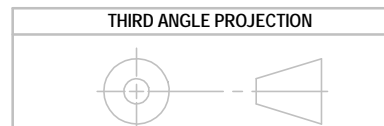


ITEM NO.	PART NUMBER	DESCRIPTION	QTY.
1	120-0505	WASHER, WAVE 3/4" ID	1
2	120-3015	STEEL SHIM,.75ID X 1.125 OD	1
3	140-0940	E-CLIPS, 3/4" ID	1
4	711-3173-01	ASSY, PEDAL ARM, W/BUSHING, LEFT	1
5	711-3174-01	ASSY, PEDAL, W/BUSHING, LEFT	1
6	711-3176-01	KIT, PEDAL PAD, LEFT	1
7	711-3177	KIT, PEDAL STOPS, 5100 STEPPER	1

**DOCUMENT STATUS:
RELEASE**

- NOTES: (D)
- TORQUE TO 120 IN-LB/ 10 FT-LB/ 13.6 Nm
 - TIGHTEN HARDWARE SNUGLY TO RUBBER PADS WITHOUT DEFORMING RUBBER

NOTICE OF PROPRIETARY INFORMATION
THIS DOCUMENT SHALL NOT BE REPRODUCED NOR SHALL THE INFORMATION CONTAINED HEREIN BE USED BY OR DISCLOSED TO OTHER EXCEPT AS EXPRESSLY AUTHORIZED BY UNISEN INC, D.B.A. STAR TRAC.



MATERIAL
SEE BOM

FINISH
N/A

VENDOR: P/N:

UNLESS OTHERWISE SPECIFIED DIMENSIONS ARE IN INCHES. TOLERANCES ARE:
DECIMALS X. = ±.13
X.X = ±.05
X.XX = ±.03
X.XXX = ±.010

INITIAL DATE
DRAWN FP 09-15-05
CHECKED
APPROVED

U.O.M. INCH

UNISEN, INC. DBA
14410 Myford Road
Irvine CA 92606

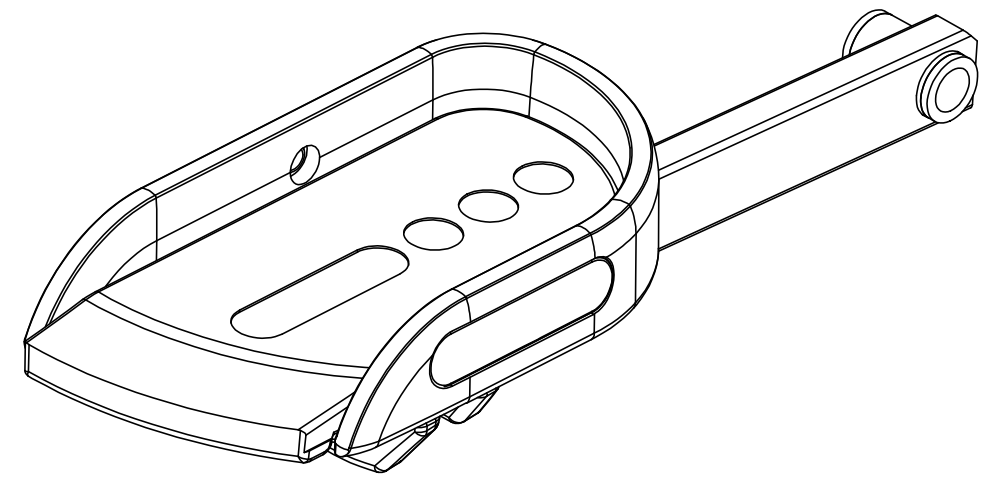
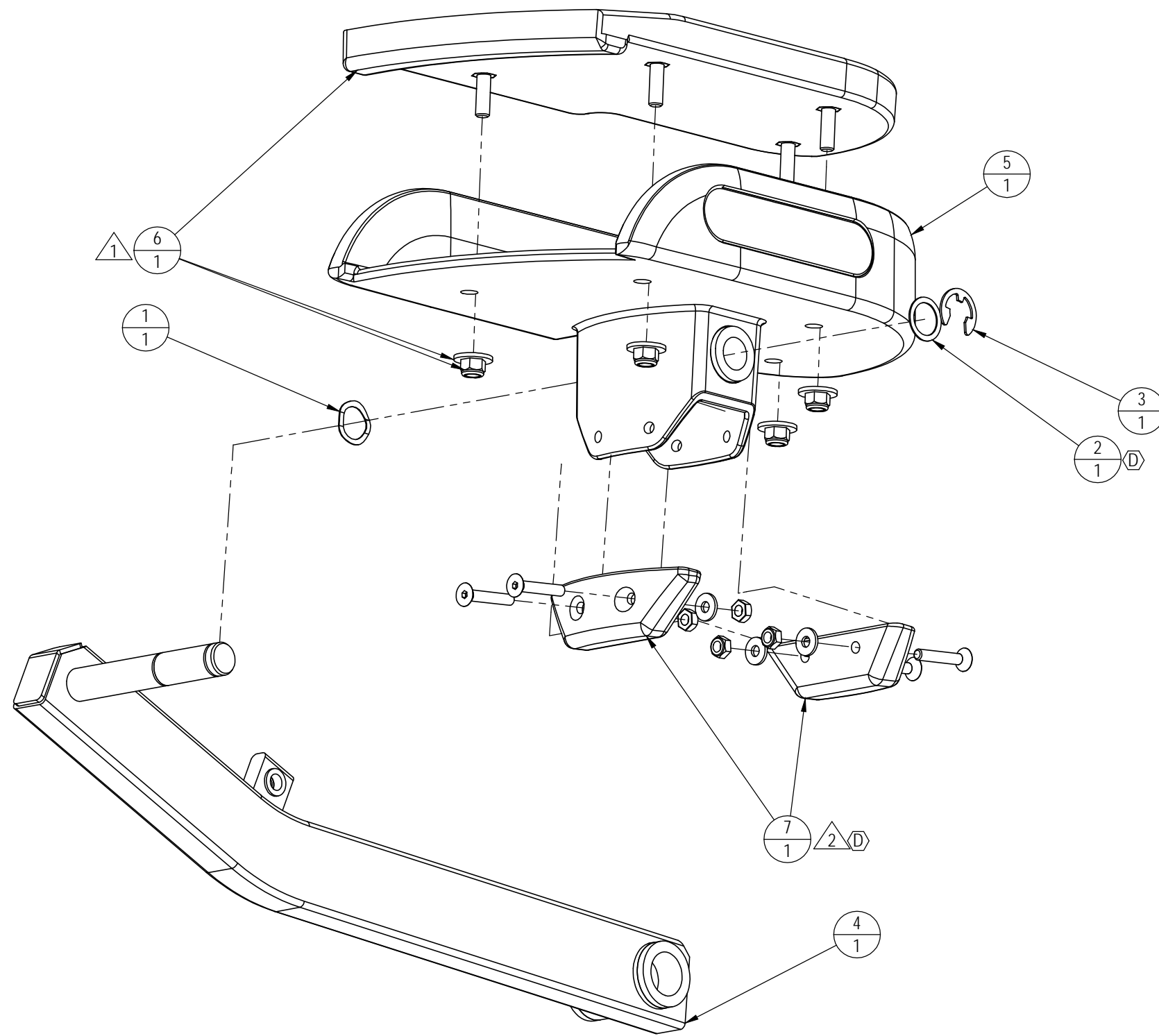


STARTRAC PART NO. **711-1045-01** REV **D**

TITLE
PEDAL ARM, LEFT, STEPPER

SCALE: 1:3 | SHEET 1 OF 1 | SHEET SIZE: B

		REVISIONS		1	
REV.	DATE	DESCRIPTION	ECO	BY	
A	9/27/05	PRODUCTION RELEASE	11349	FP	
B	8/16/06	ADD P/N: 120-0505 , 120-3015 , 140-0940 ; DELETE P/N: 711-3175	11476	FJM	
C	04-29-09	ADD TORQUE SPEC OF 120 IN-LB TO NOTE 1	12089	SCN	
D	10-21-09	CHG QTY OF 120-3015 WAS 2 IS 1; ADD NOTE #2	12301	SCN	



ITEM NO.	PART NO.	DESCRIPTION	QTY.
1	120-0505	WASHER, WAVE 3/4" ID	1
^D 2	120-3015	STEEL SHIM, .75ID X 1.125 OD	1
3	140-0940	E-CLIPS, 3/4" ID	1
4	711-3173-02	ASSY, PEDAL ARM, W/BUSHING, RIGHT	1
5	711-3174-02	ASSY, PEDAL, W/BUSHING, RIGHT	1
6	711-3176-02	KIT, PEDAL PAD, RIGHT	1
7	711-3177	KIT, PEDAL STOPS, 5100 STEPPER	1

**DOCUMENT STATUS:
RELEASE**

NOTICE OF PROPRIETARY INFORMATION

THIS DOCUMENT SHALL NOT BE REPRODUCED NOR SHALL THE INFORMATION CONTAINED HEREIN BE USED BY OR DISCLOSED TO OTHER EXCEPT AS EXPRESSLY AUTHORIZED BY UNISEN INC, D.B.A. STAR TRAC.

THIRD ANGLE PROJECTION



MATERIAL
SEE BOM

FINISH
N/A

VENDOR:

P/N:

UNLESS OTHERWISE SPECIFIED DIMENSIONS ARE IN INCHES. TOLERANCES ARE:
DECIMALS ANGLES
X. = ±.13
X.X = ±.05
X.XX = ±.03
X.XXX = ±.010

DRAWN FP DATE 09-15-05

CHECKED
APPROVED

U.O.M.

INCH

UNISEN, INC. DBA



14410 Myford Road
Irvine CA 92606

STARTRAC PART NO

711-1045-02

REV

D

TITLE
PEDAL ARM, RIGHT, STEPPER

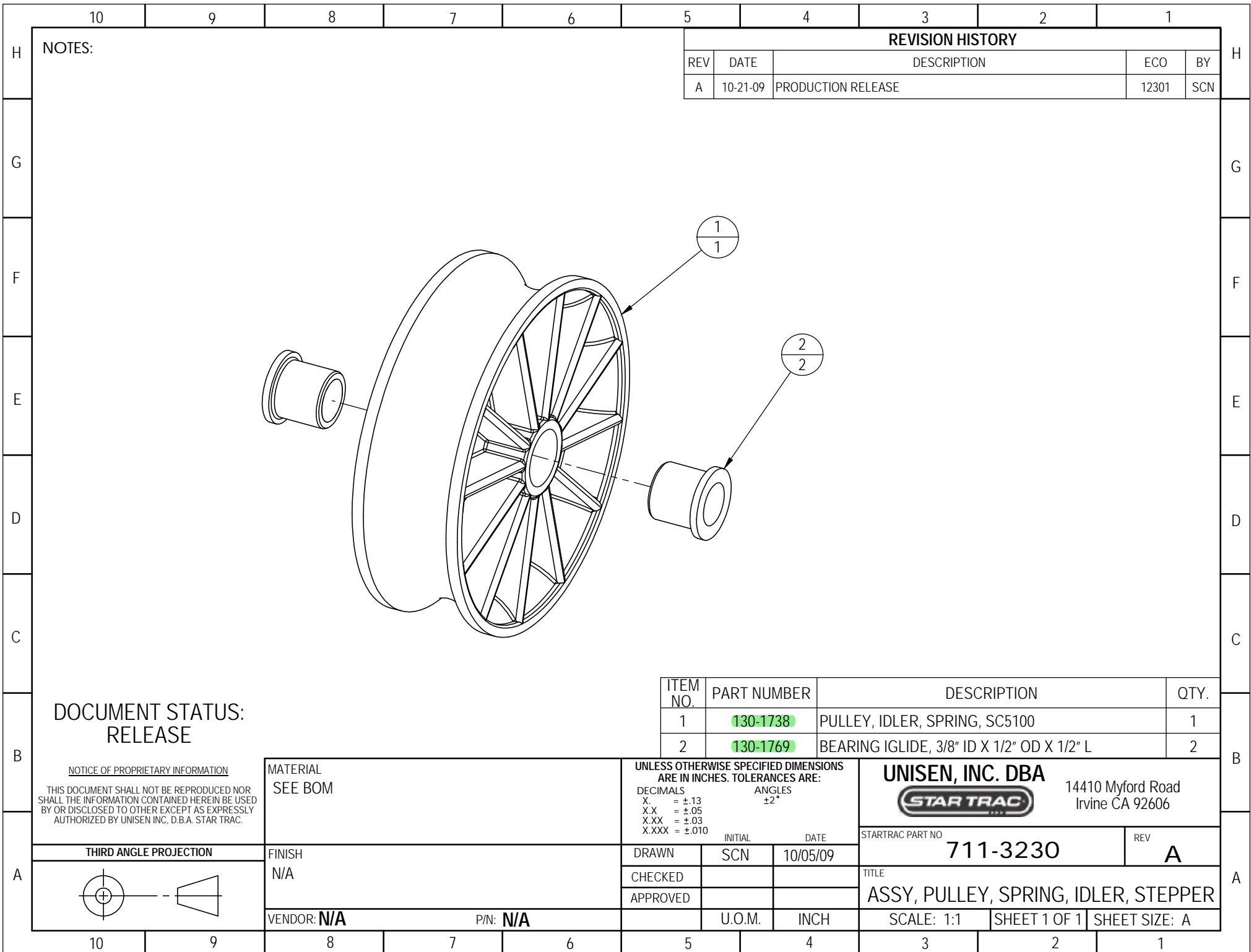
SCALE: 1:3

SHEET 1 OF 1

SHEET SIZE: B

NOTES ^D

- TORQUE TO 120 IN-LB/ 10 FT-LB/ 13.6 Nm
- TIGHTEN HARDWARE SNUGLY TO RUBBER PADS WITHOUT DEFORMING RUBBER



NOTES:

REVISION HISTORY

REV	DATE	DESCRIPTION	ECO	BY
A	10-21-09	PRODUCTION RELEASE	12301	SCN

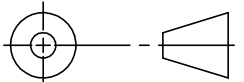
**DOCUMENT STATUS:
RELEASE**

NOTICE OF PROPRIETARY INFORMATION
THIS DOCUMENT SHALL NOT BE REPRODUCED NOR SHALL THE INFORMATION CONTAINED HEREIN BE USED BY OR DISCLOSED TO OTHER EXCEPT AS EXPRESSLY AUTHORIZED BY UNISEN INC, D.B.A. STAR TRAC.

ITEM NO.	PART NUMBER	DESCRIPTION	QTY.
1	130-1738	PULLEY, IDLER, SPRING, SC5100	1
2	130-1769	BEARING IGLIDE, 3/8" ID X 1/2" OD X 1/2" L	2

MATERIAL SEE BOM		UNLESS OTHERWISE SPECIFIED DIMENSIONS ARE IN INCHES. TOLERANCES ARE: DECIMALS ANGLES X. = ±.13 X.X = ±.05 X.XX = ±.03 X.XXX = ±.010		UNISEN, INC. DBA STAR TRAC 14410 Myford Road Irvine CA 92606	
FINISH N/A		DRAWN	SCN	DATE	STARTRAC PART NO
VENDOR: N/A		CHECKED			711-3230
P/N: N/A		APPROVED			REV A
			U.O.M.	INCH	TITLE ASSY, PULLEY, SPRING, IDLER, STEPPER
					SCALE: 1:1
					SHEET 1 OF 1
					SHEET SIZE: A

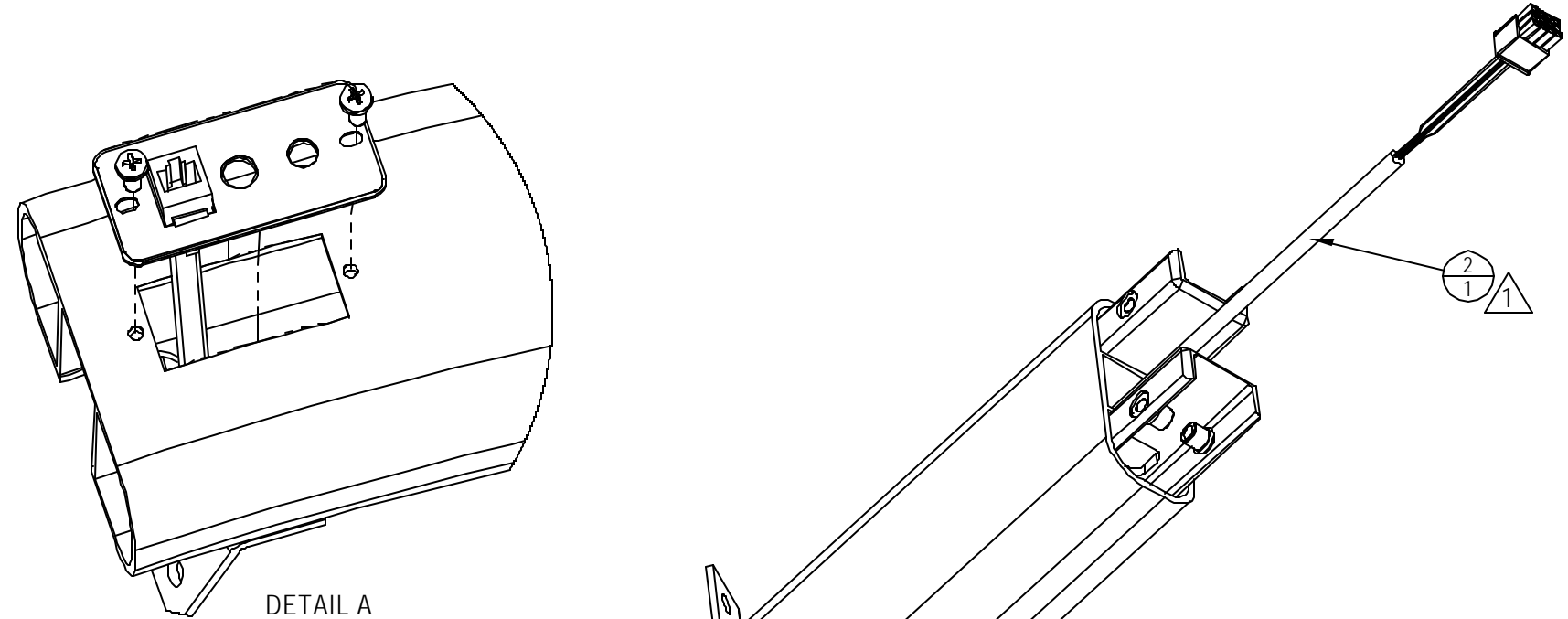
THIRD ANGLE PROJECTION



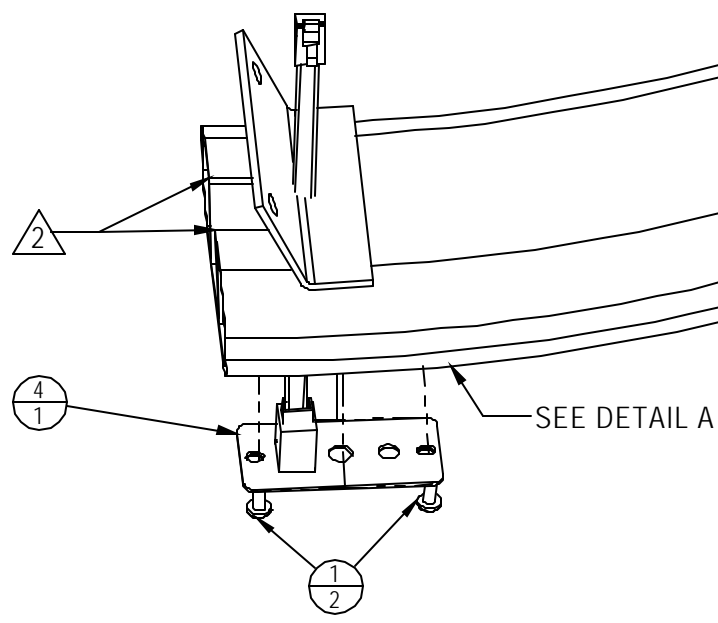
9 8 7 6 5 4 3 2 1

REVISIONS				
REV.	DATE	DESCRIPTION	ECO	BY
A	04-03-07	PRODUCTION RELEASE	11566	DN

NOTES:
 1 INSTALL CABLE IN CENTER OF TUBE, EXISTING TOP END.
 2 CABLE ASSEMBLY EXITS THROUGH BOTTOM OF NECK.



DETAIL A
SCALE 1 : 2



SEE DETAIL A

DOCUMENT STATUS:

NOTICE OF PROPRIETARY INFORMATION
 THIS DOCUMENT SHALL NOT BE REPRODUCED NOR
 SHALL THE INFORMATION CONTAINED HEREIN BE
 USED BY OR DISCLOSED TO OTHER EXCEPT AS
 EXPRESSLY AUTHORIZED BY UNISEN

ITEM NO.	PART NUMBER	DESCRIPTION	EXPLODE D/QTY.
1	110-3026	SCREW, 10-24X.50" PPHTCS	2
2	711-3185	ASSY, CABLE, INTERFACE, SC5100	1
3	711-3200	ASSY, FRONT NECK, LOWER, STEP	1
4	711-3211	ASSY, EXTERNAL CONN, P-ST	1

MATERIAL
SEE BOM

FINISH
N/A

VENDOR: N/A P/N: N/A

TOLERANCES UNLESS OTHERWISE SPECIFIED
 X.XXX = ± .010" (0.25MM) ANGLES = ± 2°
 X.XX = ± .030" (0.76MM) FRACTIONS = ± 1/32
 X.X = ± .050" (1.27MM)
 X. = ± .125" (3.20)

UNISEN, INC. DBA 14410 Myford Road
 Irvine CA 92606

DRAWN	DN	DATE	03-20-07
CHECKED			
APPROVED			
	U.O.M.	INCH	

PART NO	711-3212	REV	A
TITLE	ASSY, BASE NECK, P-ST		
SCALE: 1:3	SHEET 1 OF 1	SHEET SIZE: B	

9 8 7 6 5 4 3 2 1

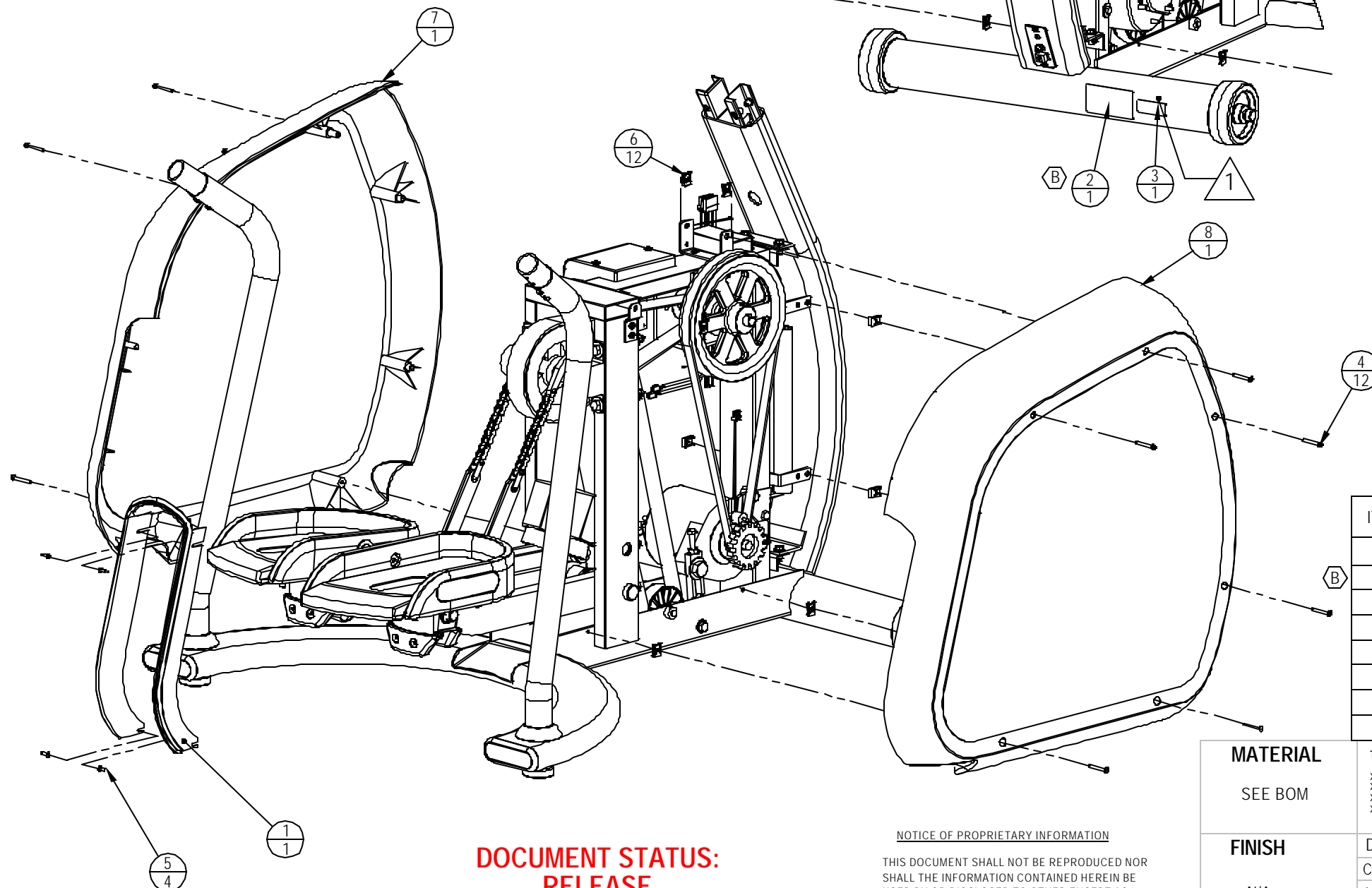
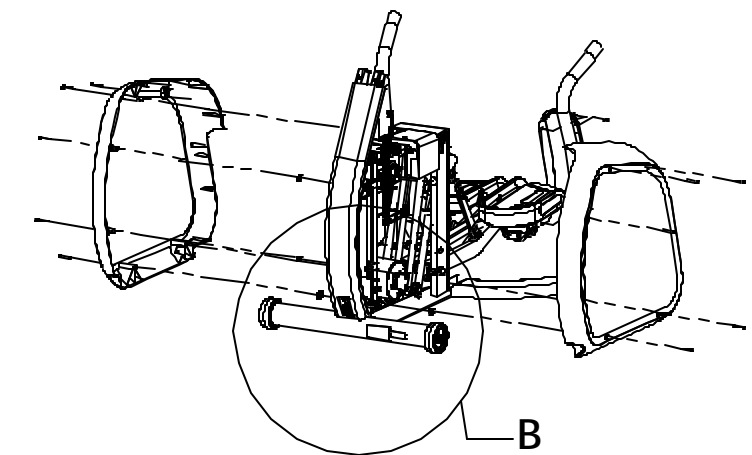
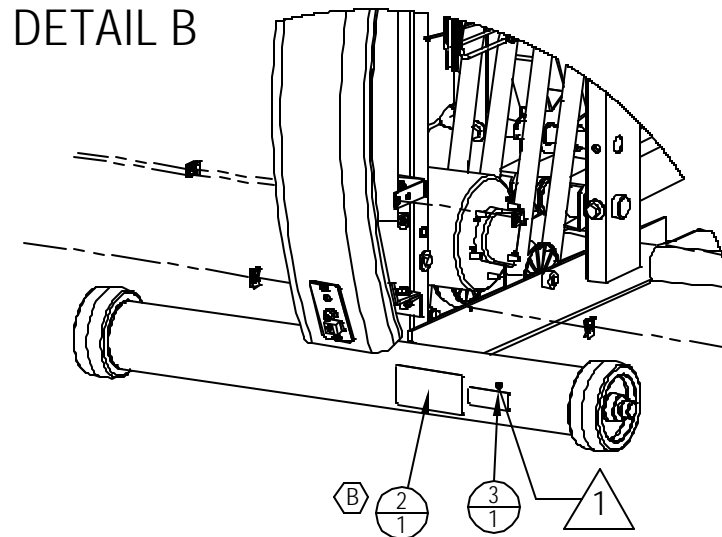
NOTES:

1 CLEAN AREA WITH ISOPROPYL ALCOLHOL PRIOR TO PLACING LABEL(S).

REVISIONS

REV	DATE	DESCRIPTION	ECO	BY
A	04-03-07	PRODUCTION RELEASE	11566	DN
B	09-10-08	REPLACE 050-1816 WITH 050-2070	11990	GM

DETAIL B



ITEM NO.	PART NO.	DESCRIPTION	QTY.
1	020-6749	SHROUD, OPENING, STEPPER, 5100	1
2	050-2070	LABEL, SERIAL	1
3	050-2079	LABEL, PATENTS, 5100	1
4	110-0286	SCREW, #8-18x1-1/2,PHT-AB,PH,CS	12
5	110-3165	SCREW, M4x0.7x14L,PHT,PH,CS,ZI	4
6	140-3323	U-NUT, #8, PANEL .025-.125	12
7	711-3204-01	ASSY, SHROUD W/ LABEL, STEP,LF	1
8	711-3204-02	ASSY, SHROUD W/LABEL, STEP, RT	1

MATERIAL

SEE BOM

FINISH

N/A

TOLERANCES UNLESS OTHERWISE SPECIFIED
 X.XXX = ± .010
 X.XX = ± .030
 X.X = ± .050
 X. = ± .125
 ANGLES = ± 2°
 FRACTIONS = ± 1/32

INITIAL	DATE
DNGO	03-20-07
U.O.M.	INCH

UNISEN, INC. DBA



14410 Myford Road
Irvine CA 92606

PART NO	711-3214	REV	B
TITLE	KIT, SHROUD, P-ST		
SCALE:	1:8	SHEET 1 OF 1	SHEET SIZE: B

DOCUMENT STATUS:
RELEASE

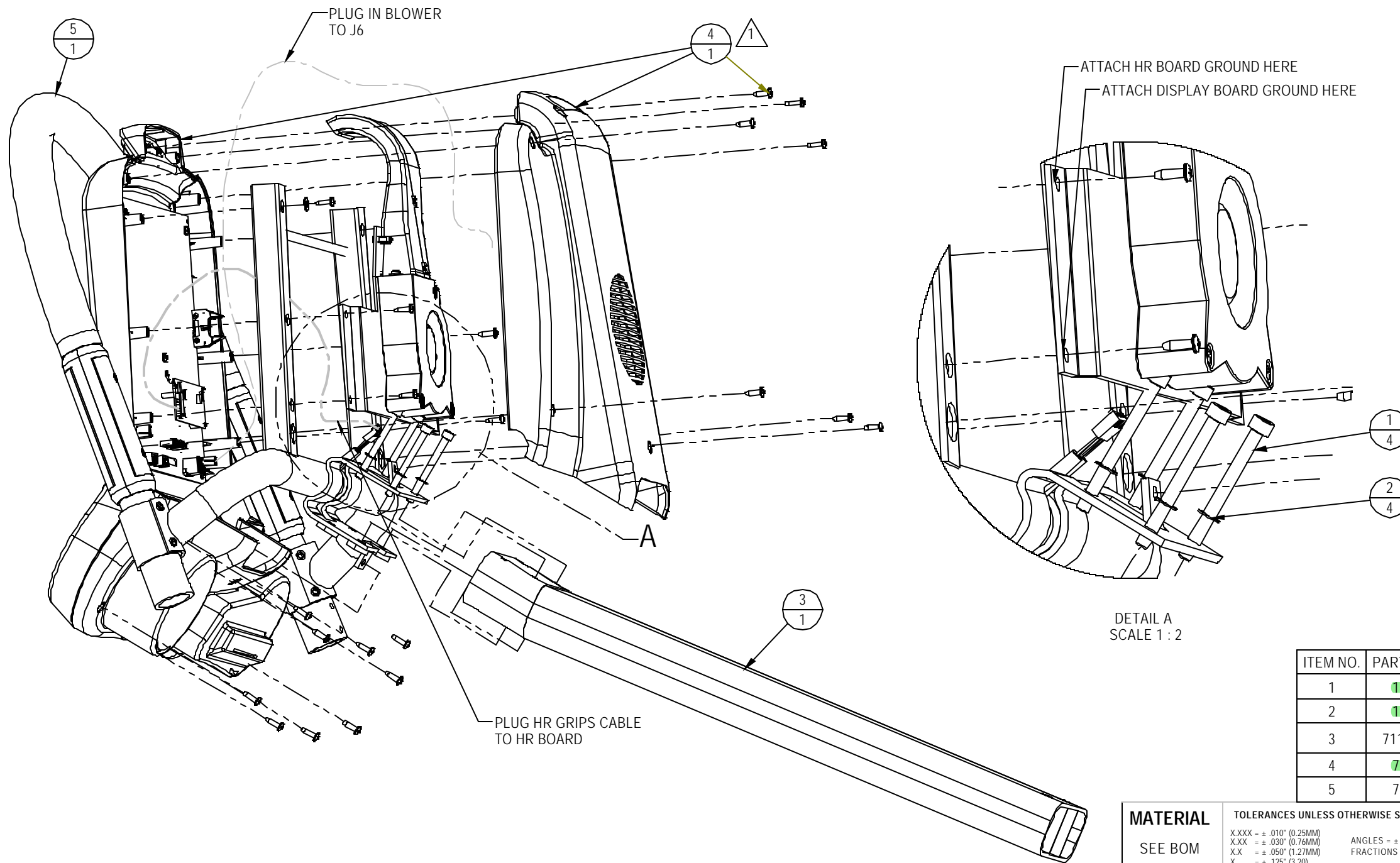
NOTICE OF PROPRIETARY INFORMATION

THIS DOCUMENT SHALL NOT BE REPRODUCED NOR SHALL THE INFORMATION CONTAINED HEREIN BE USED BY OR DISCLOSED TO OTHER EXCEPT AS EXPRESSLY AUTHORIZED BY UNISEN

NOTES: UNLESS OTHERWISE SPECIFIED.

- 1. ATTACHING HARDWARE (SCREWS AND WASHERS) IS PART OF 711-3151.
- 2. MAKE SURE THE HR BOARD IS GROUNDED TO THE HANDLEBAR.

REVISIONS				
REV	DATE	DESCRIPTION	ECO	BY
A	04-03-07	PRODUCTION RELEASE.	11566	DN



ITEM NO.	PART NUMBER	DESCRIPTION	QTY
1	110-3169	SCREW, M6x65, SHC, HE, ISO4762	4
2	120-3257	WASHER, M6, TEETH, 0.6 THICK	4
3	711-3139-05	ASSY, STEP, FRONT, EXT, TOP	1
4	711-3151	ASSY., DISPLAY ELEC., STEPPER 5100	1
5	711-3152	ASSY, HR GRIPS, P-ST	1

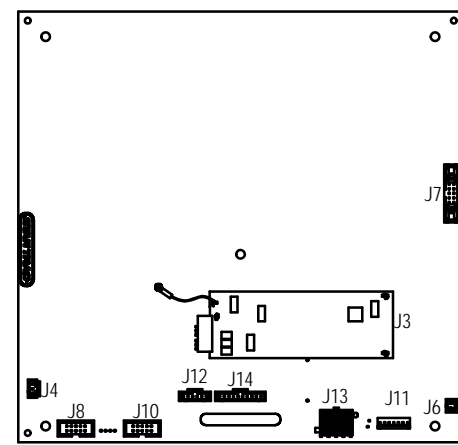
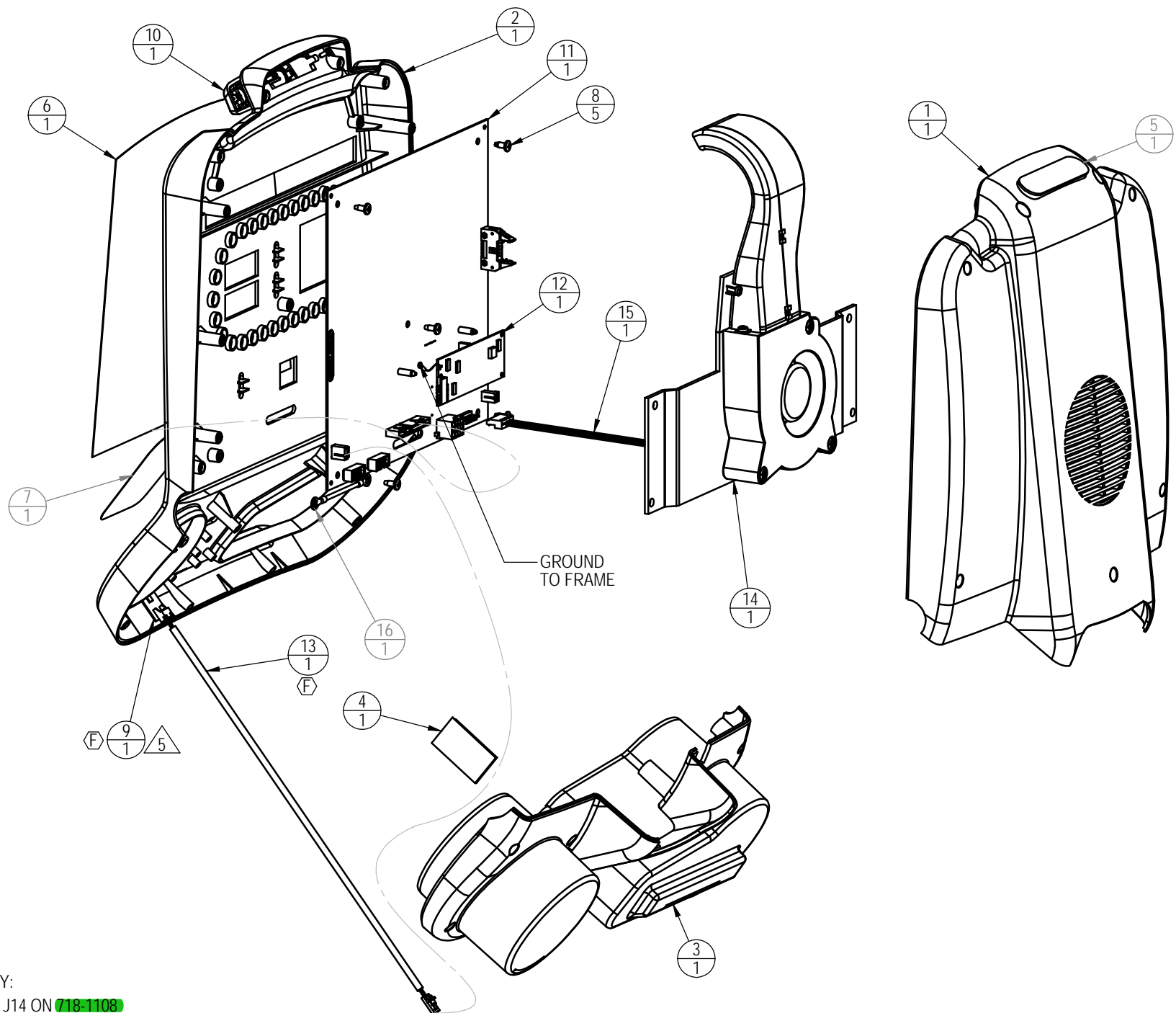
MATERIAL	TOLERANCES UNLESS OTHERWISE SPECIFIED	
	X.XXX = ± .010" (0.25MM)	ANGLES = ± 2°
FINISH	X.XX = ± .030" (0.76MM)	FRACTIONS = ± 1/32
	X.X = ± .050" (1.27MM)	
SEE NOTES	INITIAL	DATE
	U.O.M.	INCH

UNISEN, INC. DBA		14410 Myford Road Irvine CA 92606	
PART NO	711-3216	REV	A
TITLE ASSY, CONSOLE/HNDLBAR, P-ST			
SCALE: 1:4	SHEET 1 OF 1	SHEET SIZE: B	

DOCUMENT STATUS:

NOTICE OF PROPRIETARY INFORMATION
THIS DOCUMENT SHALL NOT BE REPRODUCED NOR SHALL THE INFORMATION CONTAINED HEREIN BE USED BY OR DISCLOSED TO OTHER EXCEPT AS EXPRESSLY AUTHORIZED BY UNISEN

REVISIONS				
REV.	DATE	DESCRIPTION	ECO	BY
A	07-06-05	PRODUCTION RELEASE	11295	FJM
B	11-28-05	REPLACE P/N: 050-1932 WITH 050-1958	11376	FJM
C	01-11-06	S/W VER. IS: U1 V2.36 & U2 V1.73	11392	RKL
D	08-02-06	ADD NOTE 4	11464	RKL
E	06-27-07	P/N: IS 715-3407 WAS 715-3518	11656	DMM
F	11-11-09	REMOVE P/N: 110-3163 QTY.1, 715-3407 QTY.1; ADD P/N: 715-3864 QTY.1, 718-5196 QTY.1; UPDATE NOTE 1 & AND NOTE 5.	12313	SJK

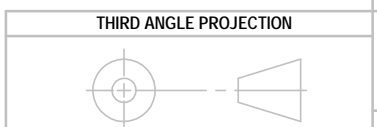


ITEM	PART NO	Description	QTY
1	020-6411	DISPLAY, BACK, PRO BIKE	1
2	020-6413	DISPLAY, FRONT, UB/RB PRO	1
3	020-6416	DISPLAY, BOTTOM, PRO BIKE	1
4	020-6460	WINDOW, IR READER, 5100/6100/6200/6300/6400	1
5	050-1887	LABEL, LOGO STAR TRAC, PRO BIKE	1
6	050-1926	KEYPAD, PRO STEPPER, ENGL	1
7	050-1958	LABEL, FAMOUS STEPS INFO	1
8	110-3252	SCREW, M4x0.7x10L,PHT,PH,CS,BO	5
9	715-3864	ASSY, WIRELESS HR, POLAR, 92cm L.R.	1
10	718-1107	ASSY, AIR VENT, UB/RB PRO	1
11	718-1108	ASSY., DISPLAY BOARD POPULATED, 5100/6100/6200/6300/6400	1
12	718-1129	PCB, HR CONTACT,UB/RB PRO	1
13	718-5196	ASSY, CABLE, WIRELESS HR	1
14	720-5068	ASSY, FAN W/BRACKET, PRO BIKE	1
15	721-0033	ASSY., CONN., FITLINX/CARDIO	1
16	721-1065	ASSY., HARNESS, GROUND, EL6200	1

- NOTES:
- CONNECTIVITY:
 - 050-1926 TO J14 ON 718-1108
 - 718-5196 TO J4 TO 718-1108 (E)
 - 718-1129 TO J3 ON 718-1108
 - 721-0023 TO J13 ON 718-1108
 - HOLD HOUSING (PLASTICS) TOGETHER WITH LOW TACK NON-MARKING TAPE.
 - FASTENERS P/N: 110-3165 (QTY: 22) AND 120-0590 (QTY:2) WILL BE INCLUDED WITH THIS ASSEMBLY.
 - APPROVED VENDOR OR EQUIVALENT: DCI VENDOR P/N: ASR-DTF8U-1C (RoHS COMPLIANT)
 - APPLY PRESSURE FOR AT LEAST 5 SEC. FOR ADHESIVE TO ADHERE TO PLASTIC SHROUD WHEN HR BOARD (715-3864) IS MOUNTED. (E)

**DOCUMENT STATUS:
RELEASE**

NOTICE OF PROPRIETARY INFORMATION
THIS DOCUMENT SHALL NOT BE REPRODUCED NOR SHALL THE INFORMATION CONTAINED HEREIN BE USED BY OR DISCLOSED TO OTHER EXCEPT AS EXPRESSLY AUTHORIZED BY UNISEN INC, D.B.A. STAR TRAC.



MATERIAL SEE BOM	UNLESS OTHERWISE SPECIFIED DIMENSIONS ARE IN INCHES. TOLERANCES ARE: DECIMALS X.X = ±.13 X.XX = ±.05 X.XXX = ±.03 X.XXX = ±.010	INITIAL GAW	DATE 06-07-05
FINISH SEE NOTES	ANGLES ±2°		
VENDOR:	P/N:	U.O.M.	INCH

UNISEN, INC. DBA
STAR TRAC
14410 Myford Road
Irvine CA 92606

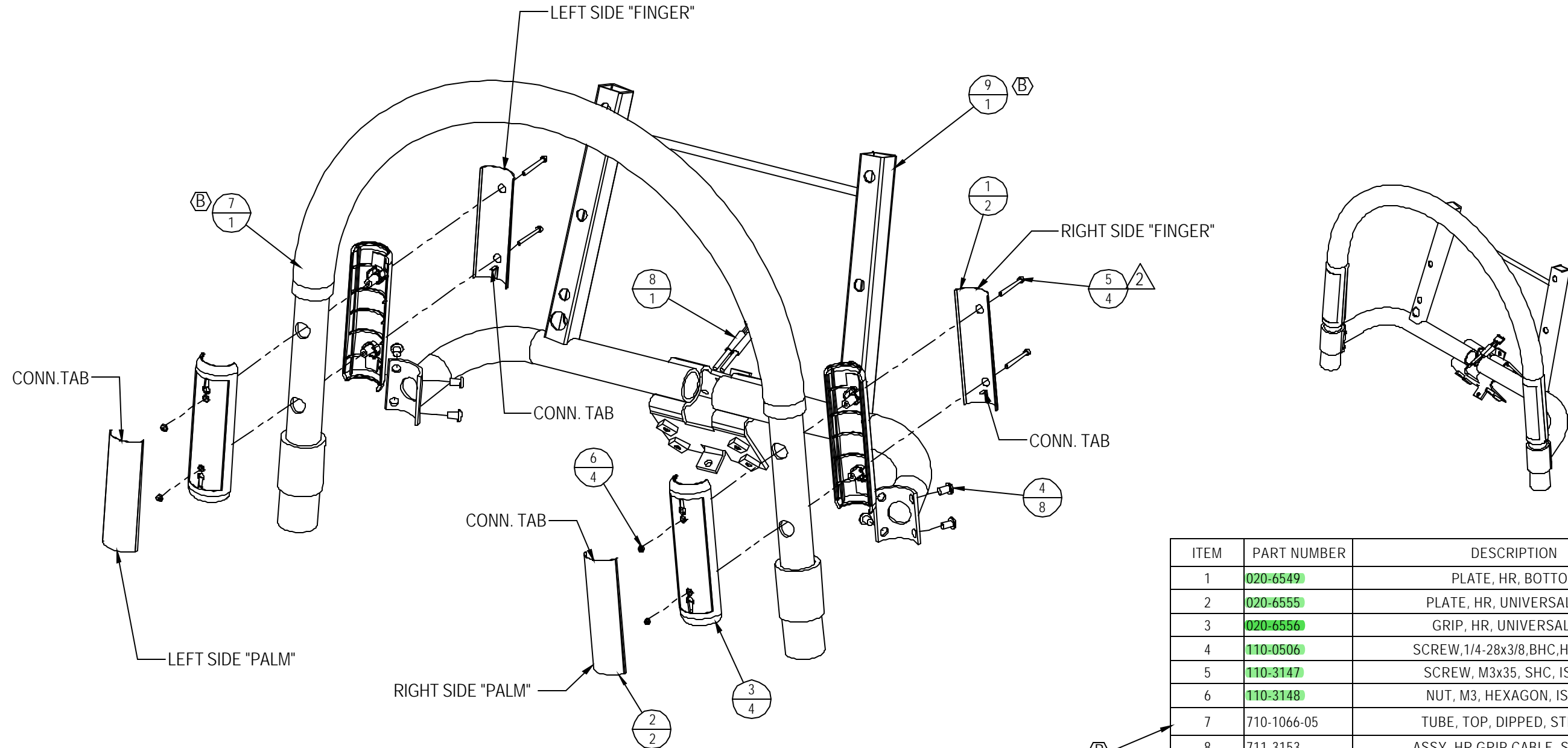
STARTRAC PART NO
711-3151

REV
F

TITLE
ASSY., DISPLAY ELEC., STEPPER 5100

SCALE: 1:4 | SHEET 1 OF 1 | SHEET SIZE: B

REVISIONS				
REV.	DATE	DESCRIPTION	ECO	BY
X2	07-18-05	PROTOTYPE RELEASE	-	N/A
A	09-27-05	PRODUCTION RELEASE	11349	FP
B	08-08-07	DELETED 710-1066, 711-3160. ADDED 710-1066-05, 711-3160-05	11704	DN



ITEM	PART NUMBER	DESCRIPTION	QTY
1	020-6549	PLATE, HR, BOTTOM	2
2	020-6555	PLATE, HR, UNIVERSAL, TOP	2
3	020-6556	GRIP, HR, UNIVERSAL, BLK	4
4	110-0506	SCREW, 1/4-28x3/8, BHC, HK, SS, BO	8
5	110-3147	SCREW, M3x35, SHC, ISO4762	4
6	110-3148	NUT, M3, HEXAGON, ISO4762	4
7	710-1066-05	TUBE, TOP, DIPPED, STEPPER	1
8	711-3153	ASSY, HR GRIP CABLE, STEPPER	1
9	711-3160-05	DISPLAY, SUPPORT, STEPPER	1

Ⓟ NOTES:

- SEE WIRING DIAGRAM ON SHEET 2 FOR CONNECTIONS.
- APPLY 4 LB-IN / 0.5 N-m TORQUE TO SCREWS (110-3147).

DOCUMENT STATUS:

NOTICE OF PROPRIETARY INFORMATION
THIS DOCUMENT SHALL NOT BE REPRODUCED NOR
SHALL THE INFORMATION CONTAINED HEREIN BE
USED BY OR DISCLOSED TO OTHER EXCEPT AS
EXPRESSLY AUTHORIZED BY UNISEN

MATERIAL
SEE BOM

FINISH
SEE NOTES

VENDOR:

P/N: NA

TOLERANCES UNLESS OTHERWISE SPECIFIED

X.XXX = ± .010" (0.25MM) ANGLES = ± 2°
 X.XX = ± .030" (0.76MM) FRACTIONS = ± 1/32
 X.X = ± .050" (1.27MM)
 X = ± .125" (3.20)

UNISEN, INC. DBA



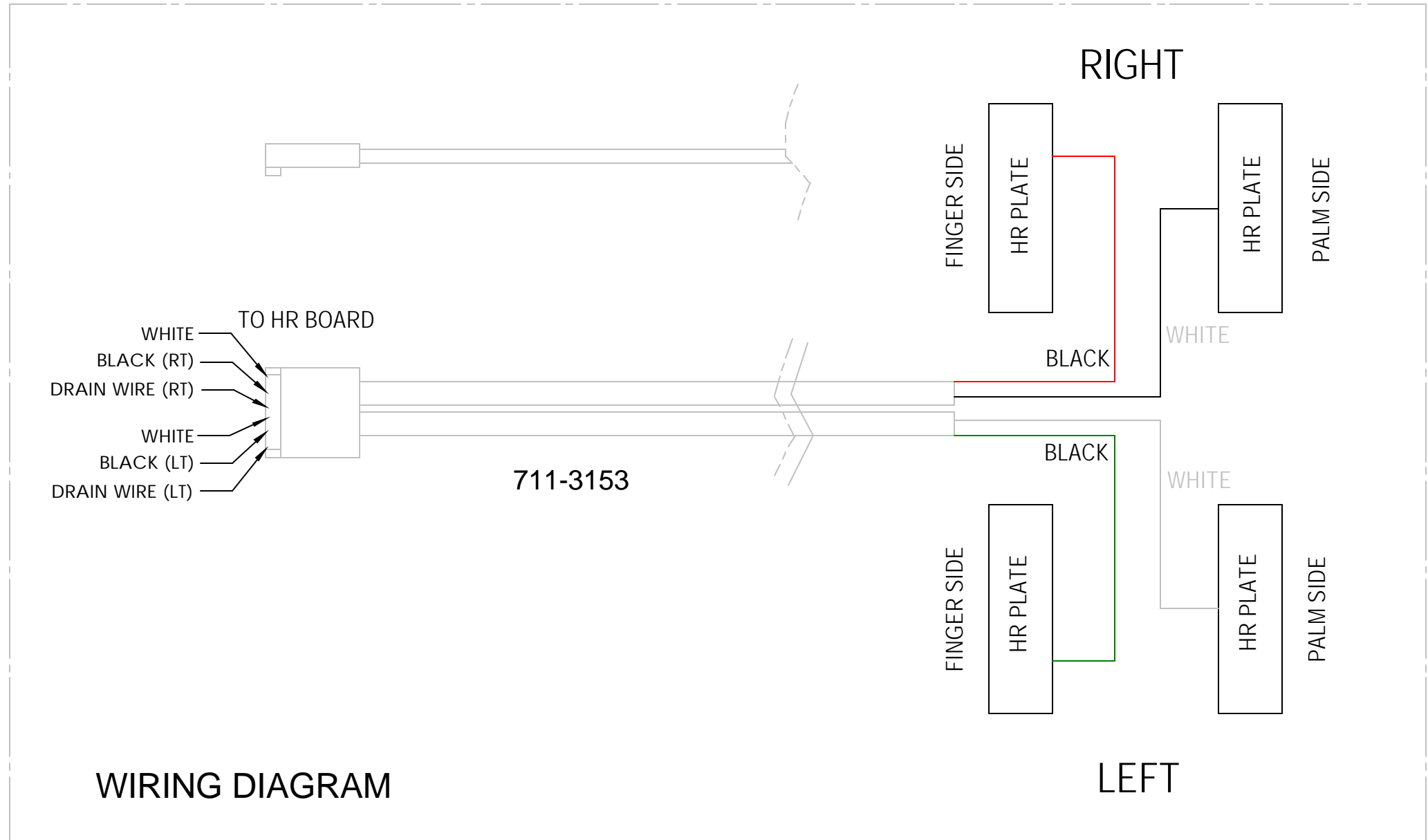
14410 Myford Road
Irvine CA 92606

INITIAL	DATE
DRAWN DN	06-17-05
CHECKED	
APPROVED	

PART NO 711-3152 REV B

TITLE ASSY, HR GRIPS, STEPPER

U.O.M. INCH SCALE: 2:8 SHEET 1 OF 2 SHEET SIZE: B



WIRING DIAGRAM

UNISEN, INC. DBA		14410 Myford Road Irvine CA 92606	
PART NO	711-3152	REV	B
TITLE	ASSY, HR GRIPS, STEPPER		
SCALE: 2:8	SHEET 2 OF 2	SHEET SIZE: B	