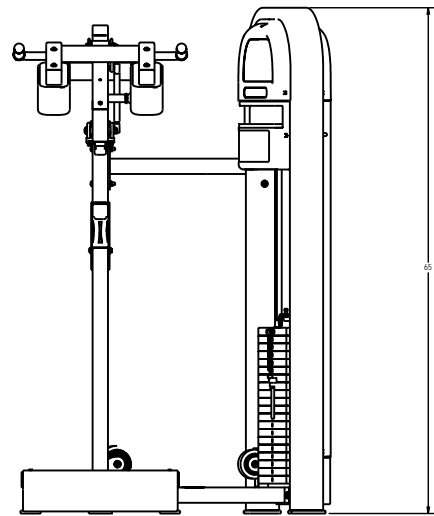
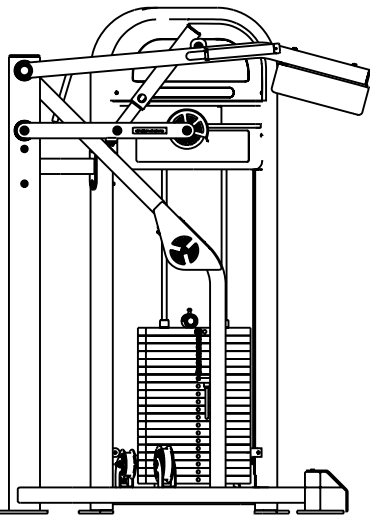
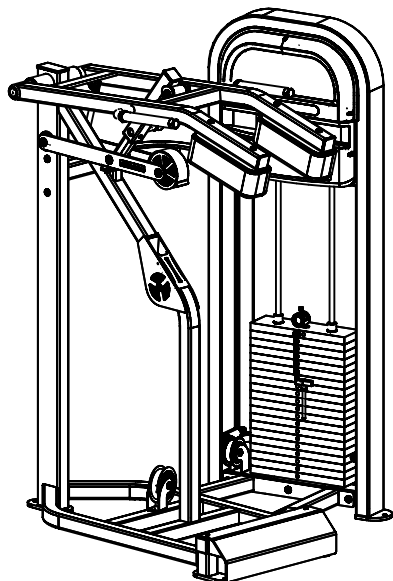
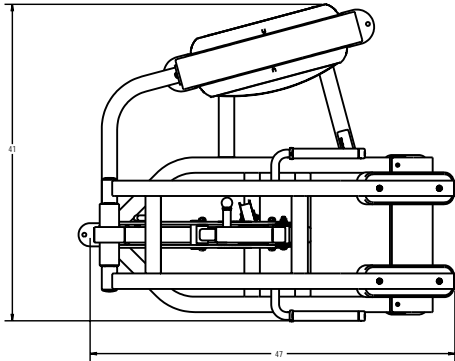


REVISIONS				
REV.	DATE	DESCRIPTION	ECO	APPROVED
A	2/26/2008	PRODUCTION RELEASE	100287	DMS
B	10/10/2008	REPLACED ITEM 4900-0086 WITH 4900-0588	100329	DMS
C	11/4/2008	ADDED (2) 2120-3848 & (4) 4350-0001	100341	DMS



ITEM NO.	PART NUMBER	DESCRIPTION	QTY.
1	0211-0075	ASSY. WELD. MAIN FRAME, PR-S1309	1
2	0211-0076	ASSY. WELD. WT STACK, COMP. PR-S1309	1
3	0211-0092	ASSY. WELD. LINKAGE TUBE, S1309	1
4	0211-0094	ASSY. WELD. ARMS, S1309	1
5	0318-0172	ASSY. W STK. 15LB/000LBS. BELT. SHIRT MS	1
6	0211-0186	ASSY. WELD.CONNECTOR ARM, S1309	1
7	2120-0004	PLATE, RICK, PLATE	1
8	2164-0050	BAR, MACH. 3/8 X 2 1/4 HOLE	1
9	2164-0053	BAR, MACH. 3/8 X 2 1/4 HOLE	1
10	8500-0055	ASSY. UPHOLSTRY, 12x4, FL-108B	2
11	1490-0001	TUBE, GRP. 1" BLK X 8 9/16"	18 IN
12	2120-0154	PLATE, BELT CLAMP, 1/4, BC-002	1
13	2120-0592	PLATE, BELT CLAMP, 1/4, BC-003	1
14	2120-0769	RACE, INNER, 1 X 2.500	3
15	2120-3739	BAR, MACH. 1 RD. X 1 1/2, S1309	1
16	2120-0049	BRACKET MOUNT, KICK PLATE, IMPACT	2
17	2160-0324	PLATE, FOOT, 3/16 THK., S1309	1
18	2210-0001	SHROULDER, UPPER PRO	2
19	2210-0005	SHROULDER, LOWER, SHORT, OUTSIDE, PRO	1
20	2210-0006	SHROULDER, LOWER, MAIN, INSIDE, IMPACT	1
21	2210-0009	BUSHING, SEAT POST	1
22	0211-0093	ASSY. WELD. LINKAGE	1
23	0211-0102	ASSY. WELD. PULLEY COVER, S1309	1
24	1818-0074	SCREW, #8 TRX 1/2 TRX 48, PHCS	14
25	0220-0005	SHCS, 1/8 X 2 1/0	4
26	4230-0005	BHSCS, 3/8 X 2 X 1/2	2
27	4230-0006	BHSCS, 3/8 X 2 X 1/2, BRIGHT, Z	3
28	4230-0051	BHSCS, 3/8 X 2 X 1/2, BRIGHT, Z	3
29	4230-0056	BHSCS, 3/8 X 3, BRIGHT, Z	4
30	4230-0057	BHSCS, 3/8 X 2 1/4, BRIGHT, Z	1
31	4230-0059	BHSCS, 3/8 X 4 1/4, BRIGHT, Z	3
32	4230-0060	BHSCS, 3/8 X 2 3/4, BRIGHT, Z	1
33	4230-0072	BHSCS, 1/2 X 1 X 4, BRIGHT, Z	4
34	4230-0080	BHSCS, 5/16 X 18 X 3/4, BRIGHT, Z	4
35	4250-0001	SSS, 10-32 X 1/8, BLK.	8
36	4250-0015	SSSCP, 1/4 X 2 1/2, BLK.	2
37	8500-0002	NUT, NYLOC, 5/16-18	4
38	8500-0008	NUT, JAM, 1/4-20, Z	2
39	8500-0022	NUT, JAM, NYLOC, 1/2-13, NTE	4
40	8500-0029	NUT, NYLOC, JAM, 3/8-16, Z	8
41	8500-0048	U NUT, #8 PANEL, 025-125	14
42	8500-0048	U NUT, 1/4-20 EDGE, S31, 025-150	2
43	8500-0050	NUT, NYLOC, 3/8-16, BLK, Z	4
44	8600-0006	FLAT WASHER, 1/4 Z	2
45	8600-0007	WASHER, SAE, 5/16, Z	8
46	8600-0008	WASHER, SAE, 1/2, Z	8
47	8600-0009	WASHER, SAE, 3/8-16, Z	24
48	8600-0025	MACHINE BUSHING, 1", 18 GAGE	2
49	8900-0001	BELT, MECTROL	216 IN
50	8900-0001	STOP, RED	1
51	8900-0005	CAP, HANDLE, 1" CHROME	2
52	8900-0037	BEARING, FLANGE, 1.000 X 1.000	4
53	8900-0080	CAP, 2 1/2 X D, BLACK, TEXTURED	5
54	8900-0088	CAP, BLACK, 1" ROUND	2
55	8900-0139	BEARING, 1 ID X 2 OD, NR16-Z	4
56	8900-0151	PULL PIN, 1/2", K320	1
57	8900-0184	SHOCK, 20 LB, 8 1/2 X 3 1/5	1
58	8900-0440	PULLEY BELT 4.750, 388, 1.5W, MOLDED	3
59	8900-0441	PULLEY BELT 4.750, 128, 1.5W, MOLDED	1
60	8900-0445	PULLEY BELT 4.750, 388, 2.0W, MOLDED	1
61	8900-0522	COVER, SHROULDER BRACKET	2
62	8900-0540	BALL STUD, 10 mm X 75 LG, THD	2
63	8900-0562	PULLEY BELT 3.750, 388, 1.5W, MOLDED	1
64	0210-0119	PLAC, IMPACT PR-S1309, STANDING CALF MACH	1
65	0220-0002	LABEL, SAFETY, KEEP HANDS SMALL	1
66	0220-0005	LABEL, SAFETY, SECURE TO FLOOR	1
67	0230-0008	LOGO, STAR TRAC, IMPACT TOP SHROULDER	2
68	0230-0009	LOGO, IMPACT, LOWER SHROULDER	1
69	0230-0037	LABEL, NAME, STANDING CALF	2
70	0240-0005	LABEL, INSTRUCTIONAL, 1 1/2 VERT STRIP	1
71	2120-3848	RING, HANDLE, 1"	2

- NOTES:
1. INTERPRET DRAWING PER ASME Y14.5M-1994.
 2. REMOVE ALL BURRS AND SHARP EDGES .015/030.
 3. IF APPLICABLE, CRITICAL DIMENSIONS LABELED.
 4. ALL HARDWARE TO BE KITTED PER 3700-0383.
 5. ALL UPHOLSTRERY TO BE KITTED PER 3700-0088.

DOCUMENT STATUS:
RELEASED

MATERIAL
SEE BOM

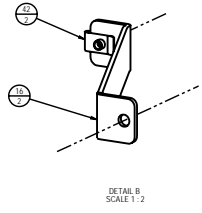
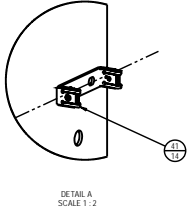
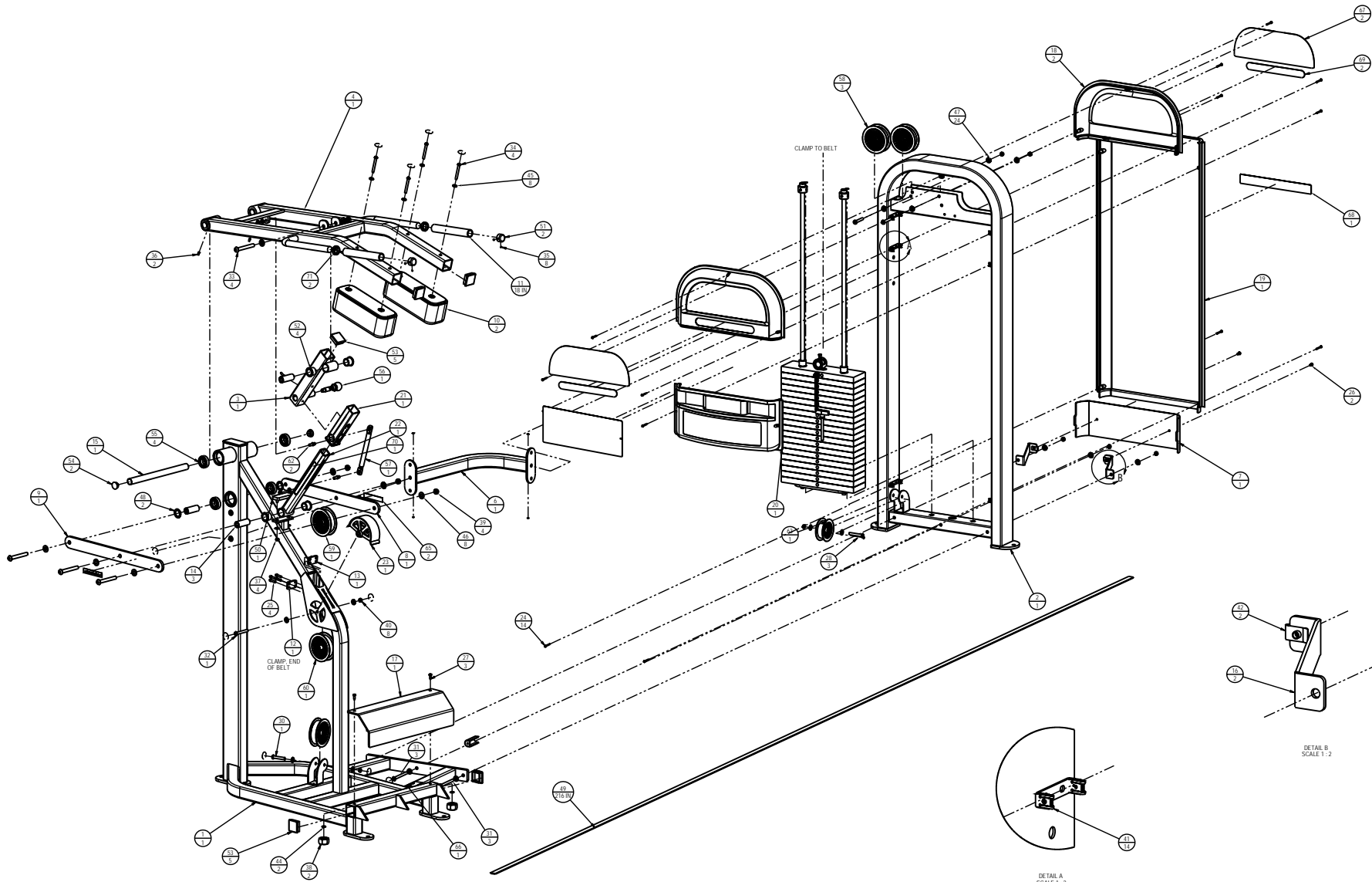
FINISH
N/A

UNISEN, INC. DBA
14410 Midland Road
Irvine, CA 92606

DATE: 02/20/2008
REV: 02/20/2008
QMS: S1309AXXXXX C

STANDING CALF MACHINE, MS
SCALE: 1:8 SHEET 7 OF 7 SHEET SIZE: B

NOTE: THIS DOCUMENT SHALL NOT BE REPRODUCED NOR SHALL THE INFORMATION CONTAINED HEREIN BE USED IN OR DISCLOSED TO OTHERS WITHOUT EXPRESSLY AUTHORIZED BY UNISEN.



UNISEN, INC. DBA
STAR TRAC
 14410 Myford Road
 Irvine, CA 92606
 9MS-S1309AXXXX C
 STANDING CALF MACHINE, MS
 SCALE: 1/8 SHEET 2 OF 2 SHEET SIZE: B