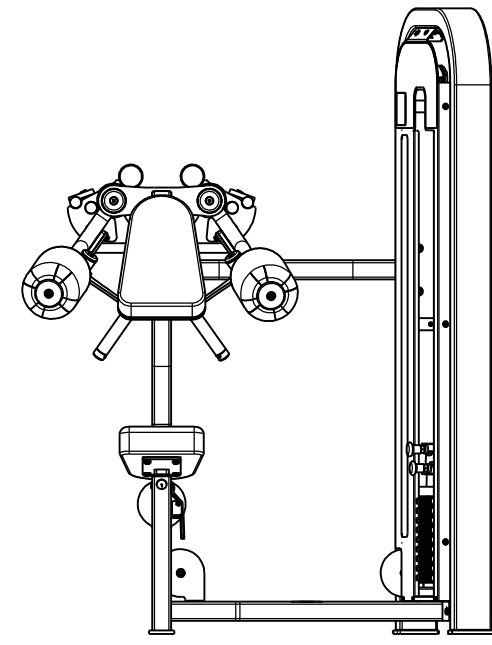
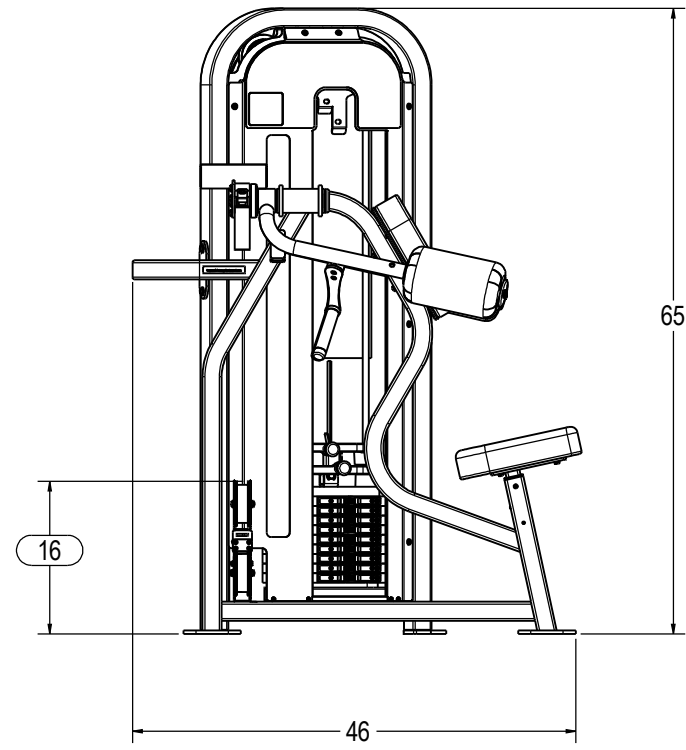
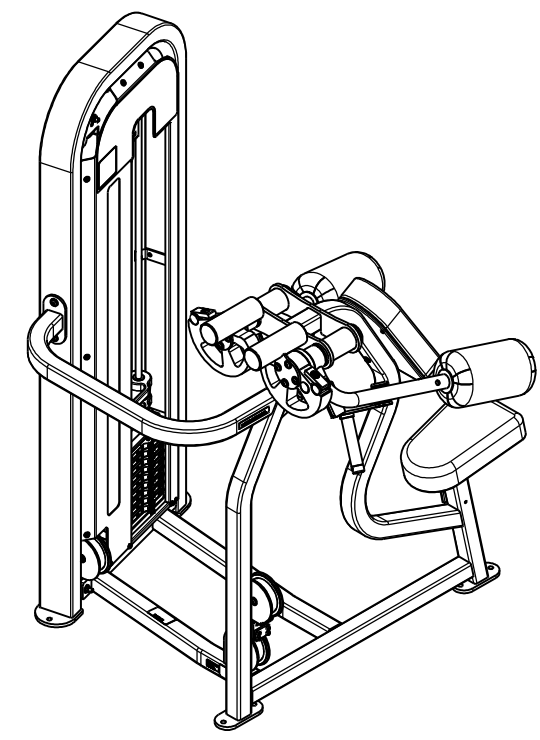
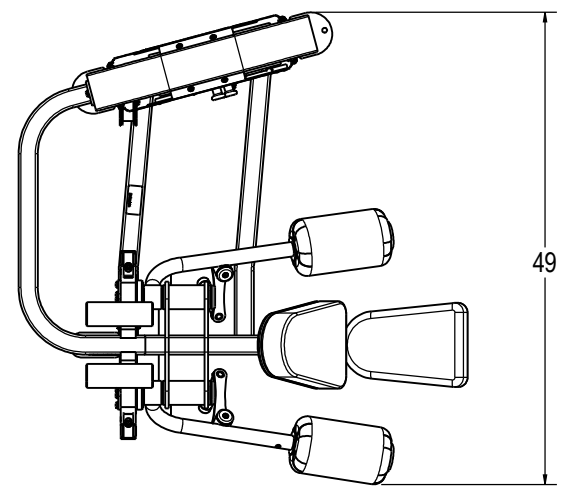


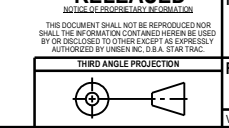
REVISION HISTORY				
REV	DATE	DESCRIPTION	ECO	BY
A	11/11/2009	PRODUCTION RELEASE	100594	SLS



ITEM NO.	PART NUMBER	DESCRIPTION	QTY.
1	3211-0151	DELT RAISE MAIN FRAME	1
2	3211-0152	DELT RAISE ARM	1
3	3211-0169	DELT RAISE ARM SIDE B	1
4	3210-0108	ASSY, WELD, SEAT	1
5	3211-0209	ASSY, WELD, GRIP HANDLE, S4302	2
6	3311-0393	ASSY, MECH, WT FRAME, S4302E LL	1
7	4900-PNTX	POWDER COAT, TBD	1.5 LBS
8	3500-0021	ASSY, UP, ROLLER PAD, 5.70DX10LG	2
9	3500-0083	ASSY, UPHOLSTRY, 13.25x9, FS-402-A	1
10	3500-0087	ASSY, UPHOLSTRY, 8.78x13.1/8, FBR-716-B	1
11	4900-UPHX	UPHOLSTRY, TBD	1.0 LIN YDS
12	1400-0001	DELT RAISE GRIP	10.25
13	2120-0154	PLATE, BELT CLAMP, 1/4, BC-002	1
14	2120-3826	CAP, BEARING 2 1/2 RND ALUM	2
15	2120-3848	RING, HANDLE, 1"	2
16	2120-3887	CAP, BEARING 1 3/4 RND ALUM	2
17	2210-0009	BUSHING, SEAT POST	1
18	3211-0149	ASSY WELD, IN LINE PULLEY CONNECT	1
19	3211-0168	DELT C/BALANCE	2
20	3290-0001	ASSY, WELDMNT, HANDLE	1
21	4210-0030	FHSCS, 3/8-16 X .875, BRIGHT Z	2
22	4210-0031	FHSCS, 1/4-20 X .75, BRIGHT Z	2
23	4220-0004	SHCS, 1.4-20 x 3/4L	4
24	4220-0025	SHCS, 1/2-20 X 1.75 L, Z	2
25	4230-0050	BHSCS, 3/8-16 X 1, BRIGHT, Z	2
26	4230-0057	BHSCS, 3/8 X 2 1/4, BRIGHT, Z	10
27	4230-0059	BHSCS, 3/8-16 X 4 1/4, BRIGHT, Z	3
28	4230-0060	BHSCS, 3/8-16 X 2 3/4, BRIGHT, Z	2
29	4230-0069	BHSCS, 1/4-20 X 1 3/4, BRIGHT, Z	1
30	4230-0080	BHSCS, 5/16-18 X 2 3/4, BRIGHT, Z	2
31	4230-0085	BHSCS, 5/16-18 X 1 1/4, BRIGHT, Z	4
32	4230-0093	BHSCS, 1/4-20 X 3/4, BRIGHT, Z	1
33	4250-0001	SSS, 10-32 X 1/8, BLK	8
34	4500-0008	Nut, JAM, 1/4-20, Z	1
35	4500-0016	NUT, NYLOC, 5/16-18, NE, Z	4
36	4500-0029	NUT, NYLOC, JAM, 3/8-16, Z	7
37	4600-0007	WASHER, SAE, 5/16, Z	10
38	4600-0009	WASHER, SAE, 3/8-16, Z	21
39	4600-0023	WASHER, FLAT, 3/4, PLN	2
40	4600-0025	MACHINE BUSHING, 1", 18 GAGE	2
41	4600-0027	WASHER, NYLON, 2 OD, 1 1/16 ID, 3/16	2
42	4800-0001	BELT, MECTROL, PR-S6301	229
43	4900-0001	STOP, RED	2
44	4900-0005	CAP, HANDLE, 1", CHROME	2
45	4900-0052	SPRING, O.D. 5.115, CENTURY 921	1
46	4900-0056	PIN, PULL, CAM, BELT	2
47	4900-0057	CAM, PIN, CLAMP, CABLE	2
48	4900-0058	CLAMP, CAM, BELT	2
49	4900-0076	CAM, VRC-10	2
50	4900-0108	SLEEVE, HANDLE, RED	1
51	4900-0139	BEARING, 1 ID X 2 OD, NR16-Z	4
52	4900-0440	PULLEY, BELT, 4.75D, 3/8B, 1.5W MOLDED	2
53	4900-0545	BEARING, .5" ID x 1.375 OD, MESA 1621DC+	4
54	4900-0554	RET. RING, 1 3/8 INT., SPIRAL	4
55	5220-0002	LABEL, SAFETY, KEEP HANDS, SMALL	1
56	5220-0005	LABEL, SAFETY, SECURE TO FLOOR	1
57	5290-0001	SERIAL NUMBER	1
58	050-2190	LABEL, PATENTS, LNL	1
59	730-0200	PLASTIC, ROLLER WASHER	2

- NOTES:
1. INTERPRET DRAWING PER ASME Y14.5M-1994.
 2. REMOVE ALL BURRS AND SHARP EDGES .015/.030.
 3. IF APPLICABLE, CRITICAL DIMENSIONS LABELED.
 4. ALL HARDWARE TO BE KITTED PER 3700-0504.
 5. ALL UPHOLSTERY TO BE KITTED PER 3700-0356.
 6. EST. GROSS WT. 435 LBS.
 7. LOWER WGT STACK BELT 142".
 8. UPPER CAM TO CAM BELT 84"

DOCUMENT STATUS:
RELEASED



MATERIAL
SEE BOM

FINISH
N/A

VENDOR: N/A

UNLESS OTHERWISE SPECIFIED DIMENSIONS ARE IN INCHES. TOLERANCES ARE:

DECIMALS ANGLES
 .XX = ±.010
 .XXX = ±.005
 .XXXX = ±.0025
 .0000 = ±.0010

UNISEN, INC. DBA 14410 Myford Road
 STAR TRAC Irvine CA 92606

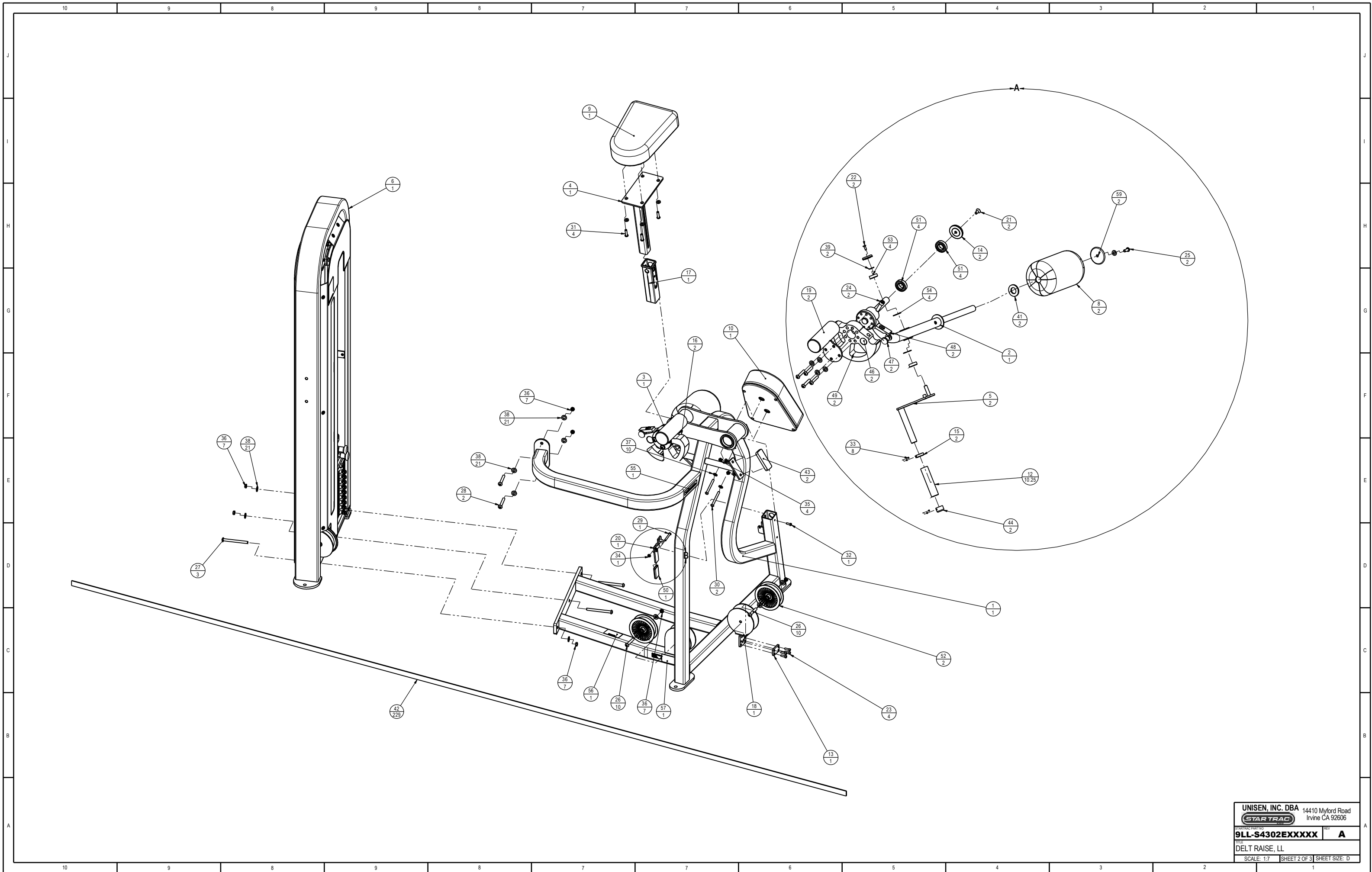
STARTRAC PART NO. **9LL-S4302EXXXXX** REV **A**

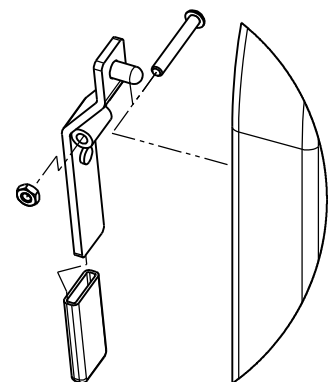
TITLE
DELT RAISE, LL

SCALE: 1:10 SHEET 1 OF 3 SHEET SIZE: D

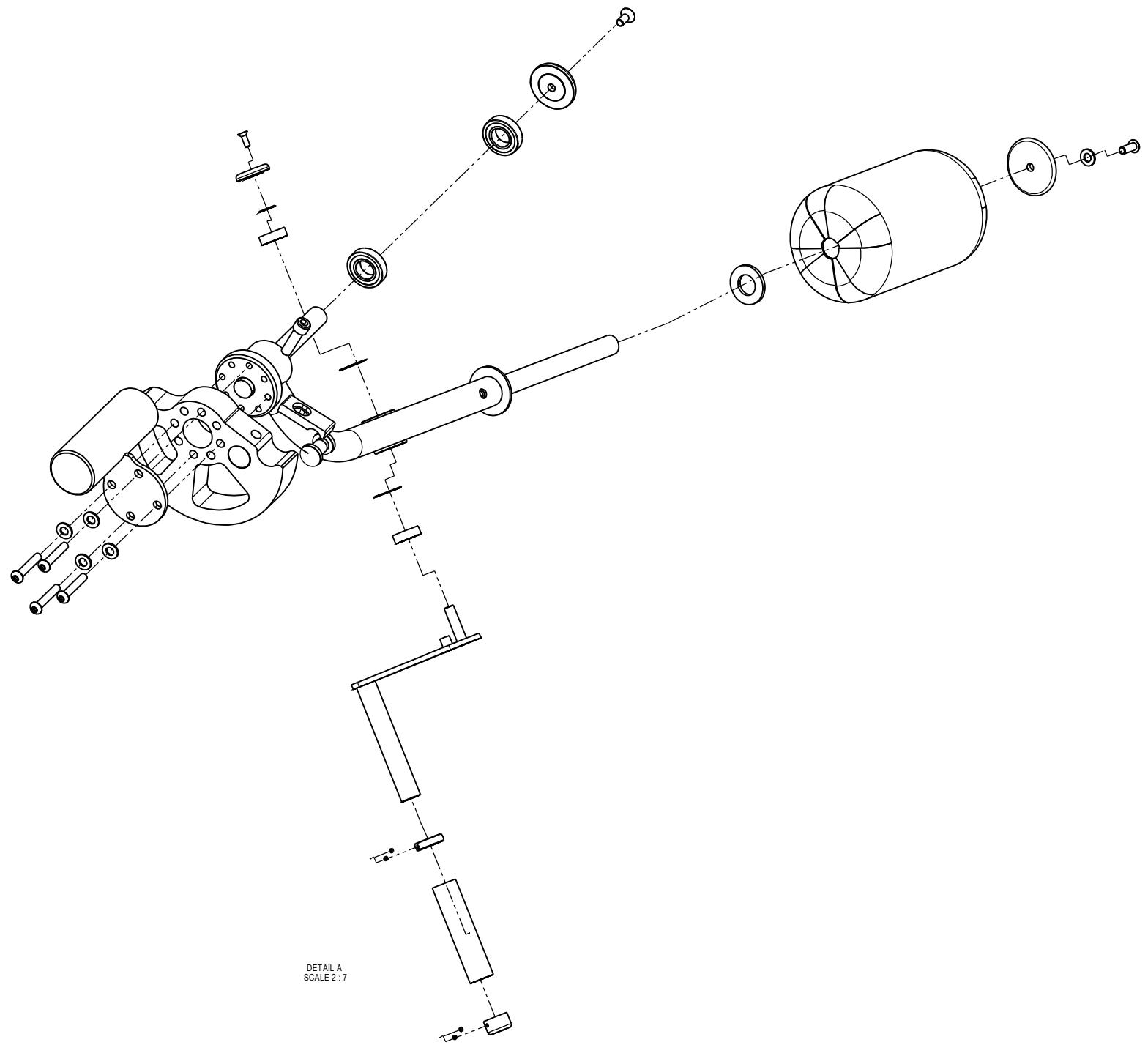
DRAWN SLS 10/23/2009
 CHECKED
 APPROVED

U.O.M. INCH





DETAIL B
SCALE 1:2



DETAIL A
SCALE 2:7

UNISEN, INC. DBA		14410 Myford Road	
		Irvine CA 92606	
STARTRAC PART NO.	REV.	9LL-S4302EXXXXX	A
DELTA RAISE, LL			
SCALE: 1:7	SHEET 3 OF 3	SHEET SIZE: D	