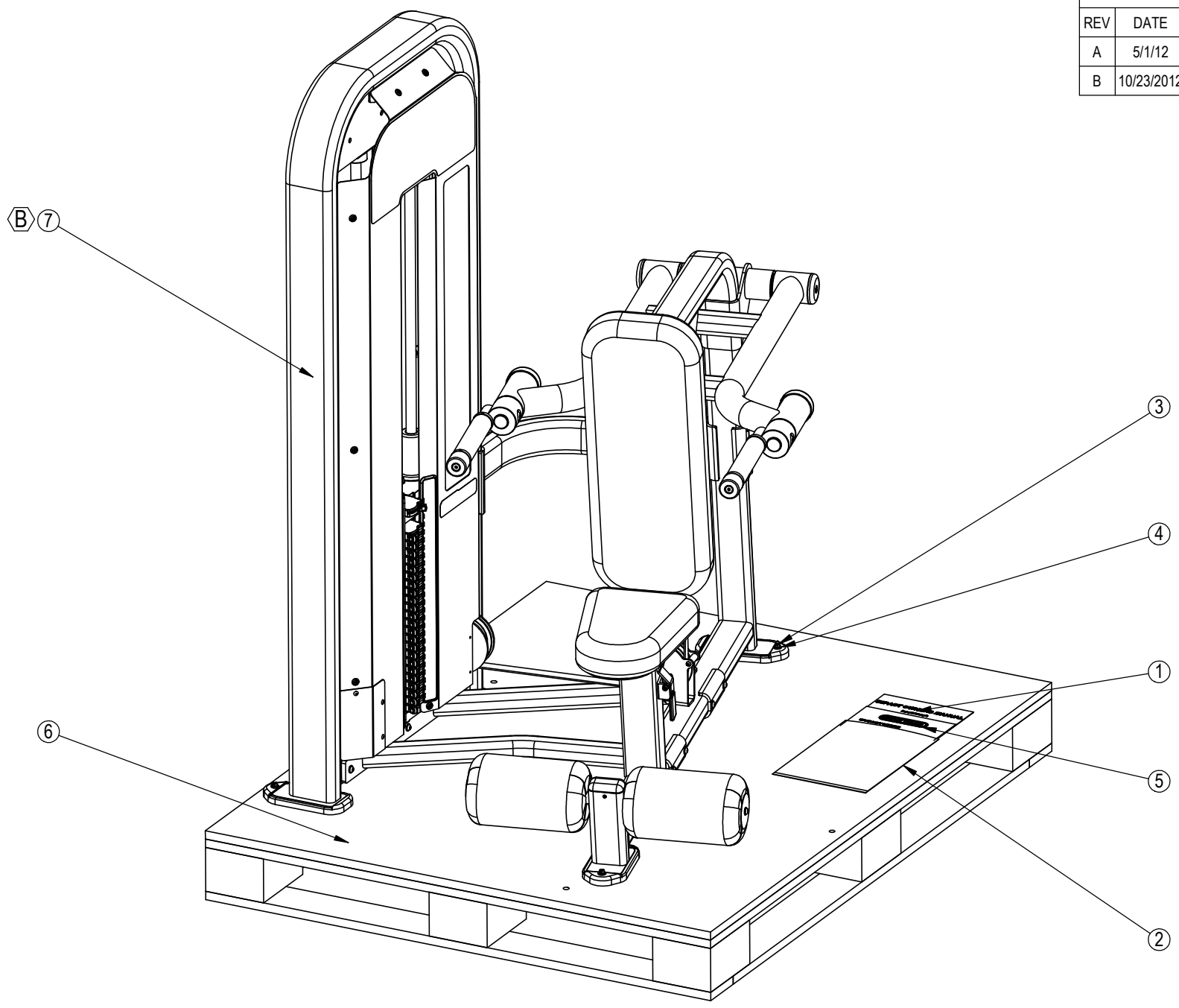


REVISION HISTORY				
REV	DATE	DESCRIPTION	ECO	BY
A	5/1/12	RELEASED @ LAND AMERICA	--	LA
B	10/23/2012	UPDATED DRAWING	13691	PG



ITEM NO.	PART NUMBER	DESCRIPTION	QTY.
1	620-8143	MANUAL,OWNERS,IMPACT,STRENGTH	1
2	731-0246	BAG,225mm X 332mm	1
3	731-0256	SCREW,M6,25mm,W,HE,ZP	4
4	731-0294	WASHER,M8,NYLON	4
5	731-2449	CARD,REG,WARRANTY, IP-B	1
6	731-5763	PALLET,WOOD,ADDUCT/ABDUCT,48X60X5.5	1
7	LA-S5303-XXXXS	LA,SSS,DIP MACHINE	1

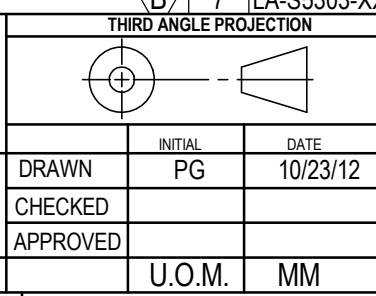
NOTICE OF PROPRIETARY INFORMATION  
 THIS DOCUMENT SHALL NOT BE REPRODUCED NOR SHALL THE INFORMATION CONTAINED HEREIN BE USED BY OR DISCLOSED TO OTHER EXCEPT AS EXPRESSLY AUTHORIZED BY CORE INDUSTRIES, INC., D.B.A. STAR TRAC.

**DOCUMENT STATUS:**

- NOTES:
1. PLACE ITEMS 1,5, INSIDE ITEM 2.
  2. ITEM 7 NOT SHOWN IN PACKED CONFIGURATION.

CLASS OF WORK	UNLESS OTHERWISE SPECIFIED DIMS ARE IN mm. TOLERANCES FOR MEASURE OF LENGTH ARE:							ANGLES = ±2°
	0.5 to 3	>3 to 6	>6 to 30	>30 to 120	>120 to 400	>400 to 1000	>1000 to 2000	
FINE	±0.05	±0.05	±0.1	±0.15	±0.2	±0.3	±0.5	----
MEDIUM	±0.1	±0.1	±0.2	±0.3	±0.5	±0.8	±1.2	±2
COARSE	±0.2	±0.3	±0.5	±0.8	±1.2	±2	±3	±4
VERY COARSE	----	±0.5	±1	±1.5	±2.5	±4	±6	±8

MATERIAL: SEE BOM  
 FINISH: N/A  
 VENDOR: N/A  
 P/N: N/A



**CORE INDUSTRIES, INC. DBA**  
  
 14410 Myford Road  
 Irvine CA 92606

STARTRAC PART NO: **9LA-S5303-XXXXS** REV: **B**

TITLE: **LA,SSS,DIP MACHINE**

SCALE: 1:15 SHEET 1 OF 1 SHEET SIZE: B