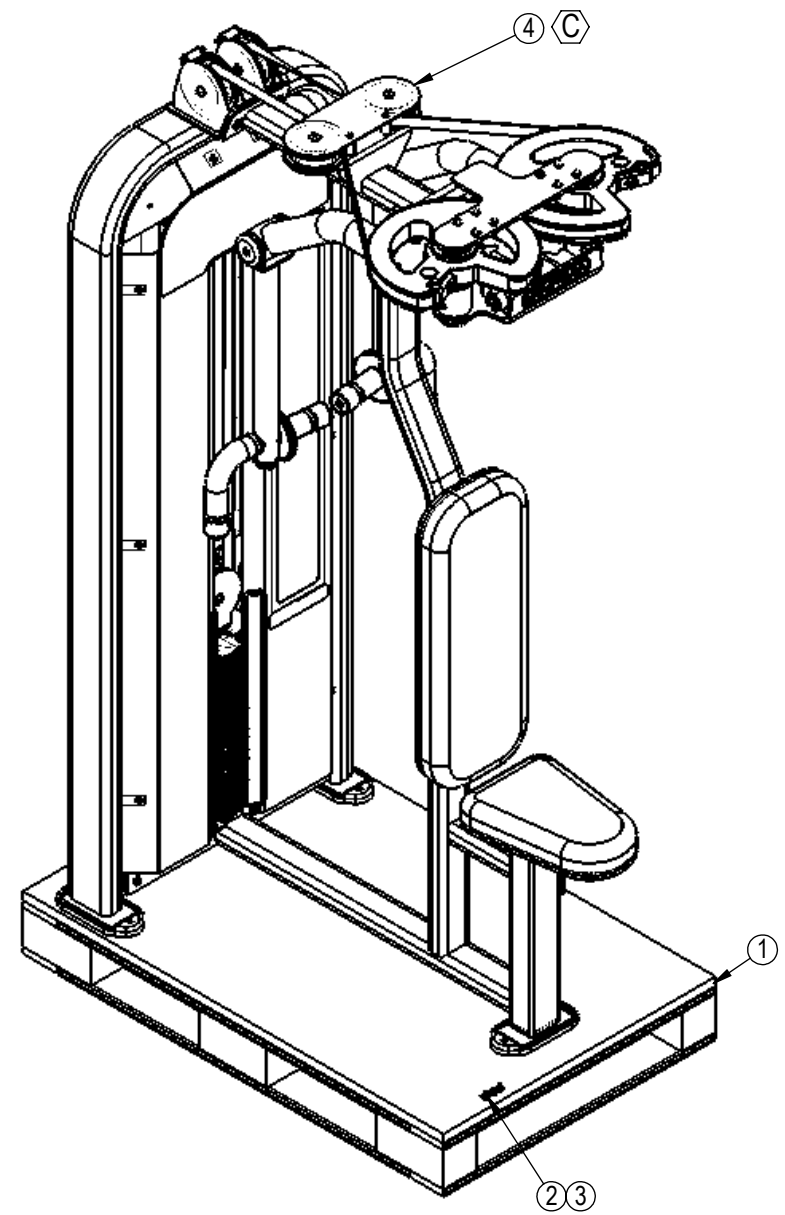


REVISION HISTORY				
REV	DATE	DESCRIPTION	ECO	BY
A	12/1/2011	RELEASED @ LAND AMERICA	----	LA
B	8/14/2012	UPDATE THE DESIGN	13687	KEY
C	10/10/2012	UPDATE TOP PLATE ASSEMBLY WITHIN THE FOLLOWING: ASSY,WGT STK,110Kg,IMP, 731-4410.	13863	CLK



NOTICE OF PROPRIETARY INFORMATION
 THIS DOCUMENT SHALL NOT BE REPRODUCED NOR SHALL THE INFORMATION CONTAINED HEREIN BE USED BY OR DISCLOSED TO OTHER EXCEPT AS EXPRESSLY AUTHORIZED BY CORE INDUSTRIES, INC., D.B.A. STAR TRAC.

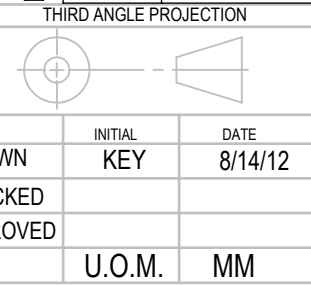
DOCUMENT STATUS:

- NOTES:
- PLACE SHIPPING LABELS ON PACKAGED UNIT BEFORE SHRINK WRAPPING.
 - USE ITEM 2,3 TO SECURE ITEM 4 TO PALLET (ITEM 1), PLACING ITEM 3 AGAINST POWDERCOAT OF ITEM 4,
 - ITEM 4 NOT SHOWN IN PACKAGED CONFIGURATION.

CLASS OF WORK	UNLESS OTHERWISE SPECIFIED DIMS ARE IN mm. TOLERANCES FOR MEASURE OF LENGTH ARE:							ANGLES = ±2°		
	0.5 to 3	> 3 to 6	> 6 to 30	> 30 to 120	> 120 to 400	> 400 to 1000	> 1000 to 2000	> 2000		
FINE	±0.05	±0.05	±0.1	±0.15	±0.2	±0.3	±0.5	----		
MEDIUM	±0.1	±0.1	±0.2	±0.3	±0.5	±0.8	±1.2	±2		
COARSE	±0.2	±0.3	±0.5	±0.8	±1.2	±2	±3	±4		
VERY COARSE	----	±0.5	±1	±1.5	±2.5	±4	±6	±8		

MATERIAL SEE BOM
 FINISH N/A
 VENDOR: N/A P/N: N/A

ITEM NO.	PART NUMBER	DESCRIPTION	QTY.
1	731-0178	PALLET,765 x 1180 x 152	1
2	731-0256	SCREW,M6,25mm,W,HE,ZP	3
3	731-0294	WASHER,M8,NYLON	3
4	LA-S4304-XXXXS	SSS,REAR PEC/DELT	1



CORE INDUSTRIES, INC. DBA
STAR TRAC
 14410 Myford Road
 Irvine CA 92606
 STARTRAC PART NO. **9LA-S4304-XXXXS** REV **C**
 TITLE **LA,SSS, REAR PEC/DELT**
 SCALE: 1:15 SHEET 1 OF 1 SHEET SIZE: B

Grid coordinates: 9, 8, 7, 6, 5, 4, 3, 2, 1 (horizontal); J, I, H, G, F, E, D, C, B, A (vertical)