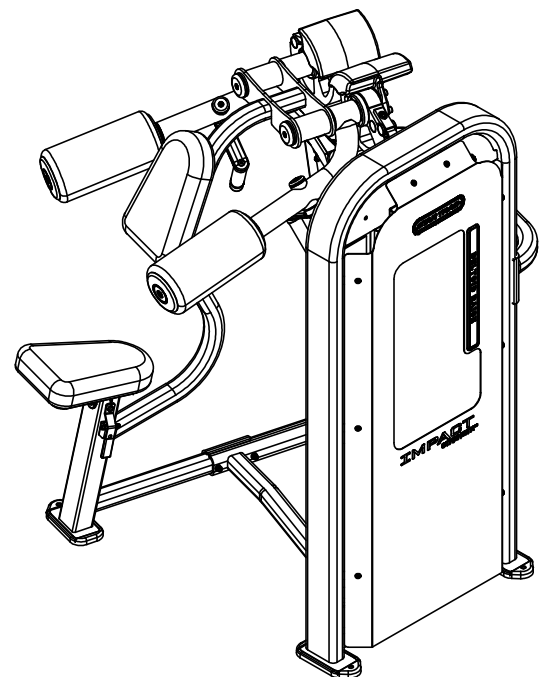
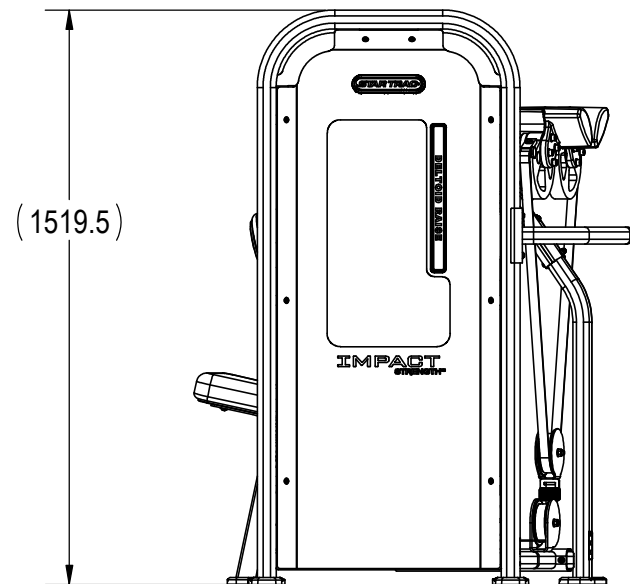
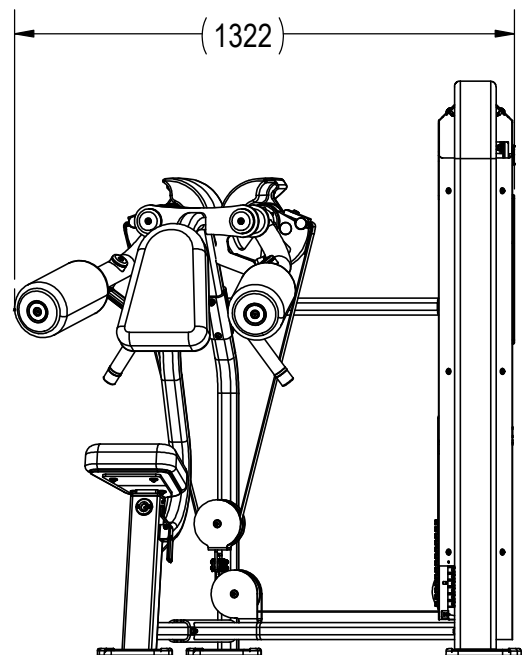
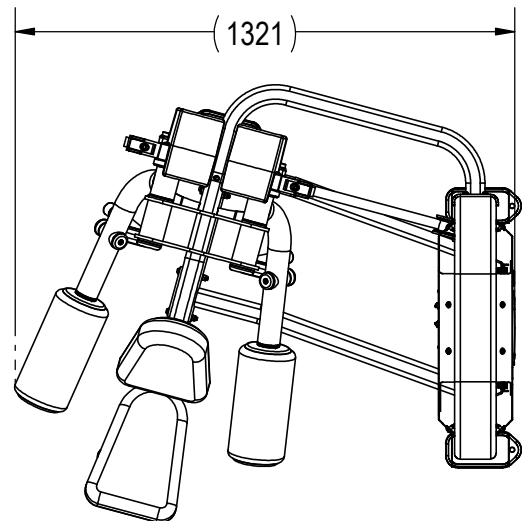


9 8 7 6 5 4 3 2 1

REVISION HISTORY				
REV	DATE	DESCRIPTION	ECO	BY
A	05/01/2012	RELEASED FOR PRODUCTION	13686	PG



NOTICE OF PROPRIETARY INFORMATION
 THIS DOCUMENT SHALL NOT BE REPRODUCED NOR SHALL THE INFORMATION CONTAINED HEREIN BE USED BY OR DISCLOSED TO OTHER EXCEPT AS EXPRESSLY AUTHORIZED BY CORE INDUSTRIES, INC., D.B.A. STAR TRAC.

DOCUMENT STATUS:

NOTES:
 1. ASSEMBLE AND INSPECT PER SOP 620-7918.

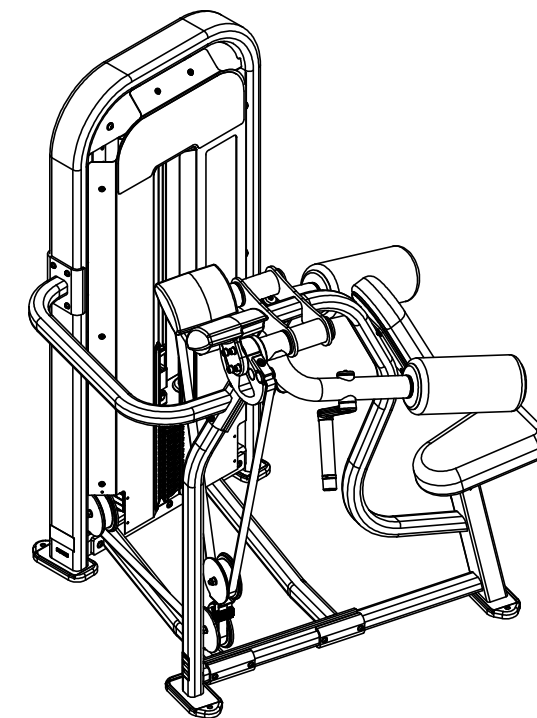
CLASS OF WORK	UNLESS OTHERWISE SPECIFIED DIMS ARE IN mm. TOLERANCES FOR MEASURE OF LENGTH ARE:							ANGLES = ±2°
	0.5 to 3	>3 to 6	>6 to 30	>30 to 120	>120 to 400	>400 to 1000	>1000 to 2000	
FINE	±0.05	±0.05	±0.1	±0.15	±0.2	±0.3	±0.5	----
MEDIUM X	±0.1	±0.1	±0.2	±0.3	±0.5	±0.8	±1.2	±2
COARSE	±0.2	±0.3	±0.5	±0.8	±1.2	±2	±3	±4
VERY COARSE	----	±0.5	±1	±1.5	±2.5	±4	±6	±8

MATERIAL SEE BOM	THIRD ANGLE PROJECTION 	
FINISH	DRAWN	CHECKED
VENDOR:	APPROVED	
P/N:	U.O.M.	MM

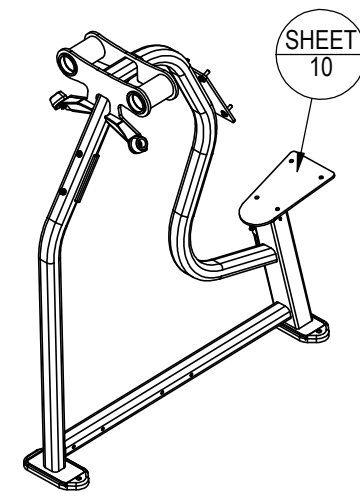
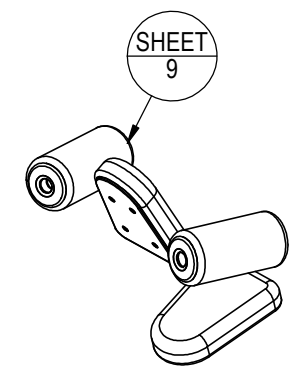
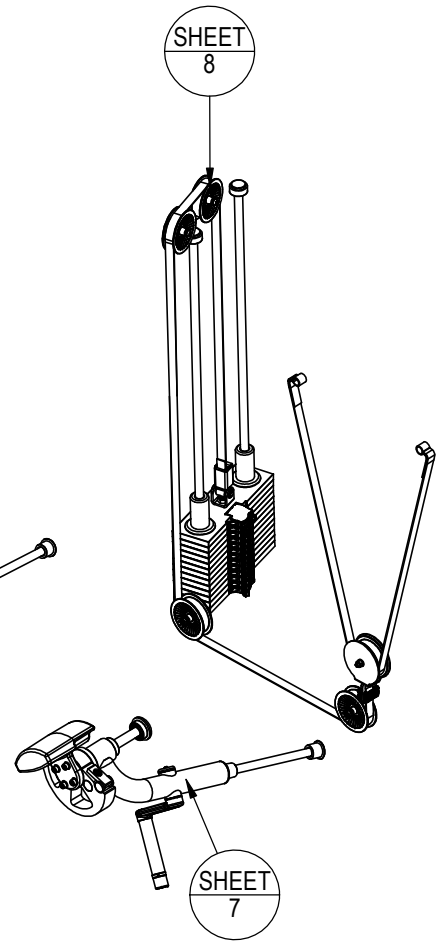
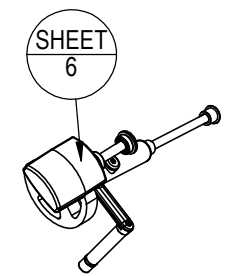
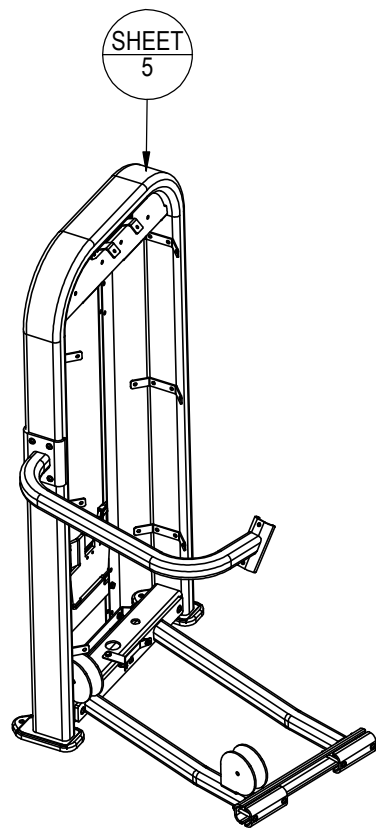
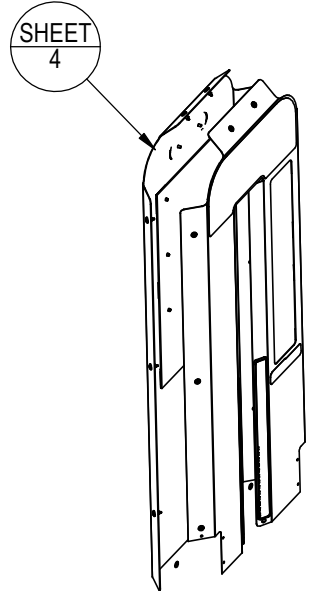
CORE INDUSTRIES, INC. DBA 		14410 Myford Road Irvine CA 92606	
INITIAL	DATE	LA-S4302-XXXXS	REV A
PG	10/10/12		
TITLE LA,SSS,DELTOID RAISE		SCALE: 1:20	SHEET 1 OF 10
SHEET SIZE: B			

9 8 7 6 5 4 3 2 1

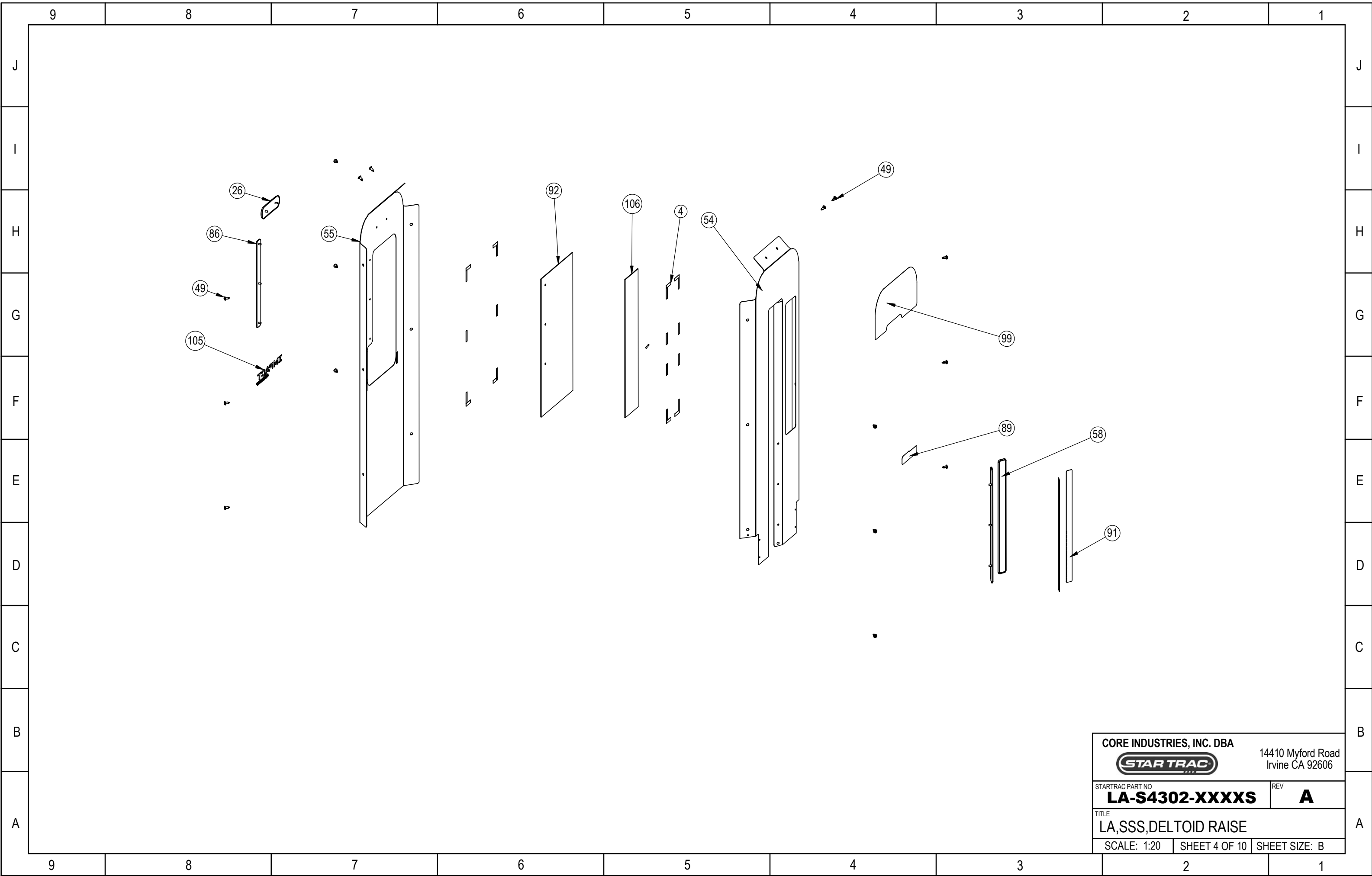
9		8		7		6		5		4		3		2		1	
	ITEM NO.	PART NUMBER	DESCRIPTION	Default/QTY.		ITEM NO.	PART NUMBER	DESCRIPTION	Default/QTY.								
J	1	4900-0076	CAM, VRC-10	2		61	731-3324	WELD, ADD ON, SHORT, IMP	2								J
	2	4900-0440	PULLEY, BELT, 4.75D, 3/8B, 1.5W, MOLDED	3		62	731-3391	BELT CLAMP BODY	1								
	3	4900-0620	PULLEY, BELT, 4.75D, 3/8B, 1.74W, MOLDED	2		63	731-3392	PLATE, THREADED, BELT CLAMP	1								
	4	4900-0626	TAPE, 3M VHB 5925	1200		64	731-3393	BELT CLAMP PLATE	2								
	5	731-0001	WASHER, 20mm X 7mm X 1mm	2		65	731-3396	SHROUD CENTER SUPPORT	1								
	6	731-0003	PIN, DOWEL, 5 X 20	2		66	731-3419	ASSY, WGT STK, 65KG	1								
	7	731-0033	NUT, RIVET, M8 X 1.25	1		67	731-3522	SCREW, M8 X 1.25, 110mm, BHC, HK, NP	3								
	8	731-0040	STOP, Ø50X26, RUBBER	2		68	731-3526-XX	CLAMSHELL, 44.5X 110 HS NO BREATHER	2								
I	9	731-0113	ASSY, 2.5Kg, ADD ON	1		69	731-3537	GUIDE RODE, Ø22MM X 1248MM	2								I
	10	731-0124	CAP, GUIDE ROD, RUBBER	2		70	731-3540	PIN, BELT CLAMP	1								
	11	731-0137	BEARING, 52 OD, 25 ID, X 15MM	4		71	731-3541	CLIP, BELT CLAMP PIN	2								
	12	731-0208	MACHINE WASHER 25MM ID	2		72	731-3542	SCREW, M12 X 1.75, 50mm, SHC, HK, CS, N	2								
	13	731-0225	SCREW, M3.5 X 9.5, SELF TAPPING	4		73	731-3551	PIN, CAM, BELT CLAMP	2								
	14	731-0235	SCREW, M8 X 1.25, 75mm, BHC, HK	4		74	731-3552	CLAMP, CAM, BELT CLAMP	2								
	15	731-0287	NUT, M8x1.25, NYLOCK	6		75	731-3553	WRAP PIN, BELT CLAMP	2								
H	16	731-0354	SCREW, M8 X 1.25, 25MM, HHM, HE	7		76	731-3557	BOLT PLATE, FLAT, 52X105 HS	1								H
	17	731-0355	WASHER, PLAIN, M8, NARROW	38		77	731-3559	SCREW, M10 X 1.5, 65MM, BHC, HK, NP	3								
	18	731-0359	SCREW, M8 X 1.25, 25mm, BHC, HK	2		78	731-3773	PLATE, BELT CLAMP, IMP	2								
	19	731-0363	NUT, M10X1.5, NYLOC	5		79	731-3780	SCREW, M6 X1.0, 35mm, BHC, HK	4								
	20	731-0365	NUT, M8 X 1.25, NYLOC JAM	15		80	731-3792-00XX	ASSY, UPHOLSTERY, SEAT	2								
	21	731-0367	WASHER, PLAIN, M10	32		81	731-3796	ASSY, STOP, MOUNT, ADD ON, IMP	1								
	22	731-0371	SCREW, M10 X 1.5, 70MM, BHC, HK	2		82	731-3801	ASSY, WELD, HANDLE, SEAT ADJUST, RATCHET	1								
	23	731-0373	WASHER, PLAIN, M6	13		83	731-3803	SLEEVE, HANDLE, RED	1								
G	24	731-0374	SCREW, M6 X 1.0, 16mm, BHC, HK	2		84	731-3833	TUBE, BELT GUIDE	1								G
	25	731-0379	SCREW, M8 X1.25, 20mm, SHC, HK	2		85	731-3834	SCREW, M6X1.0, 55MM, BHC, HK	1								
	26	731-0381	HOUSING, LOGO, STARTRAC	1		86	731-3874	HOUSING, WGT FRAME, NAME, SHORT	1								
	27	731-0397	SCREW, M8 X 1.25, 25mm, FHM, HK	8		87	731-4037	ASSY, SEAT POST, 3301	1								
	28	731-0398	SCREW, M8 X 1.25, 70mm, BHC, HK	2		88	731-4756-XX	DELT RAISE MAIN FRAME	1								
	29	731-0513	STICKER, STAR TRAC, DECO, 45MMX191MM	1		89	731-4780	STICKER, LOCK N LOAD, IMPACT	1								
	30	731-0532	SCREW, M8 X 1.25, 12MM, HHM, HE	2		90	731-4793	STICKER, NAME, DELTOID RAISE	1								
	31	731-0637	RING, BEAUTY, ADJ, PAD	1		91	731-4871	STICKER, IMP, 65 KG	1								
F	32	731-0638	SUPPORT, TUBE, ADJ, CHEST	1		92	731-4882	WINDOW, IMP, SHORT	1								F
	33	731-0972	CAP, FASTENER, THIGH PAD	2		93	731-4910-XX	WELDMENT, UPPER CONNECTOR, DR	1								
	34	731-0973	CAP, THIGH PAD, THRU	2		94	731-4912	CLAMSHELL, 50.8X 110 DR	1								
	35	731-1045	SCREW, M10X1.5, 80MM, SHC, HK, ZP	8		95	731-4913-XX	WELDMENT, DR WGT FRAME CONNECTOR	1								
	36	731-1265	CAP, END, 65MM, NO GROOVE	2		96	731-4916-XX	WELD, ARM PAD, DELT RAISE	2								
	37	731-1351	TUBE, HAND GRIP, DELT RAISE	2		97	731-4918	SHAFT, HANDLE, DELT	2								
	38	731-1352	GRIP, ROD, DELT	2		98	731-4920-XX	ASSY, WGT FRAME, DELT RAISE	1								
E	39	731-1353	SHAFT, ARM STOP, DELT	2		99	731-4967	PLACARD, IMPACT, DELTOID RAISE	1								E
	40	731-1355	BEARING, ROLLER, SEALED, 6202 2R	4		100	731-5040	ASSY WELD, IN LINE PULLEY CONNECT	1								
	41	731-1357	CAP, BEARING 1 3/4 RND	2		101	731-5045	COUNTERWEIGHT, 4302	2								
	42	731-1363	NUT, M6X1.0, NYLOC	6		102	731-5048-00XX	ASSY, ARM PAD, DR	2								
	43	731-1364	BRACKET, HANDLE, DELT RAISE	2		103	731-5053	BELT, WF, 4302	1								
	44	731-1462	SCREW, M8 X 1.25, 80mm, BHC, HK, AS, NKL	4		104	731-5054	BELT, CAMS 4302	1								
	45	731-1777	SCREW, M8 X 1.25, 30mm, BHC, HK	8		105	731-5161	STICKER, IMPACT STRENGTH	1								
	46	731-1904	END CAP	2		106	731-5217	WINDOW, INSIDE, IMPACT, IMP, SHORT	1								
D	47	731-1917	TRIM RING, GRIP	2		107	731-0390	SCREW, M8 X 1.25, 25mm, SHC, HK	3								D
	48	731-1932	RIVET, 5MM	16		108	731-0335	STICKER, MADE IN CHINA, IP	1								
	49	731-1933	RIVET, PUSH TYPE	19		109	731-0583	STICKER, SERIAL NUMBER, IP	1								
	50	731-2079	SCREW, M4 X .7, 8MM, SHC, HK, NP	2		110	731-0517	STICKER, WARNING, BOLT DOWN	1								
	51	731-2080	BUMPER, ADJ, HYPER	1													
	52	731-2523	SCREW, M6, 50MM, SHCS, HK, CS, BZ	1													
C	53	731-2647	FOOT, LONG, LEVERAGE	4													C
	54	731-3109	SHROUD, INSIDE, TALL, IMP	1													
	55	731-3111	SHROUD, OUTSIDE, SHORT, IMP	1													
	56	731-3113	BRKT, SHROUD, IMP	6													
	57	731-3114	BRKT, SHROUD, UPPER, IMP	2													
	58	731-3115	HOUSING, PLASTIC, WGT STACK, IMP	2													
	59	731-3116	BRKT, MOUNT, LOWER, INCR CHNL, IMP	1													
	60	731-3122	BRKT, MOUNT, UPPER, INCR, CHAN, IMP.	1													



CORE INDUSTRIES, INC. DBA		14410 Myford Road Irvine CA 92606	
STARTRAC PART NO	LA-S4302-XXXXS		REV A
TITLE LA, SSS, DELTOID RAISE			
SCALE: 1:20	SHEET 2 OF 10	SHEET SIZE: B	



CORE INDUSTRIES, INC. DBA		14410 Myford Road Irvine CA 92606	
STARTRAC PART NO	LA-S4302-XXXXS	REV	A
TITLE LA,SSS,DELTOID RAISE			
SCALE: 1:20	SHEET 3 OF 10	SHEET SIZE: B	

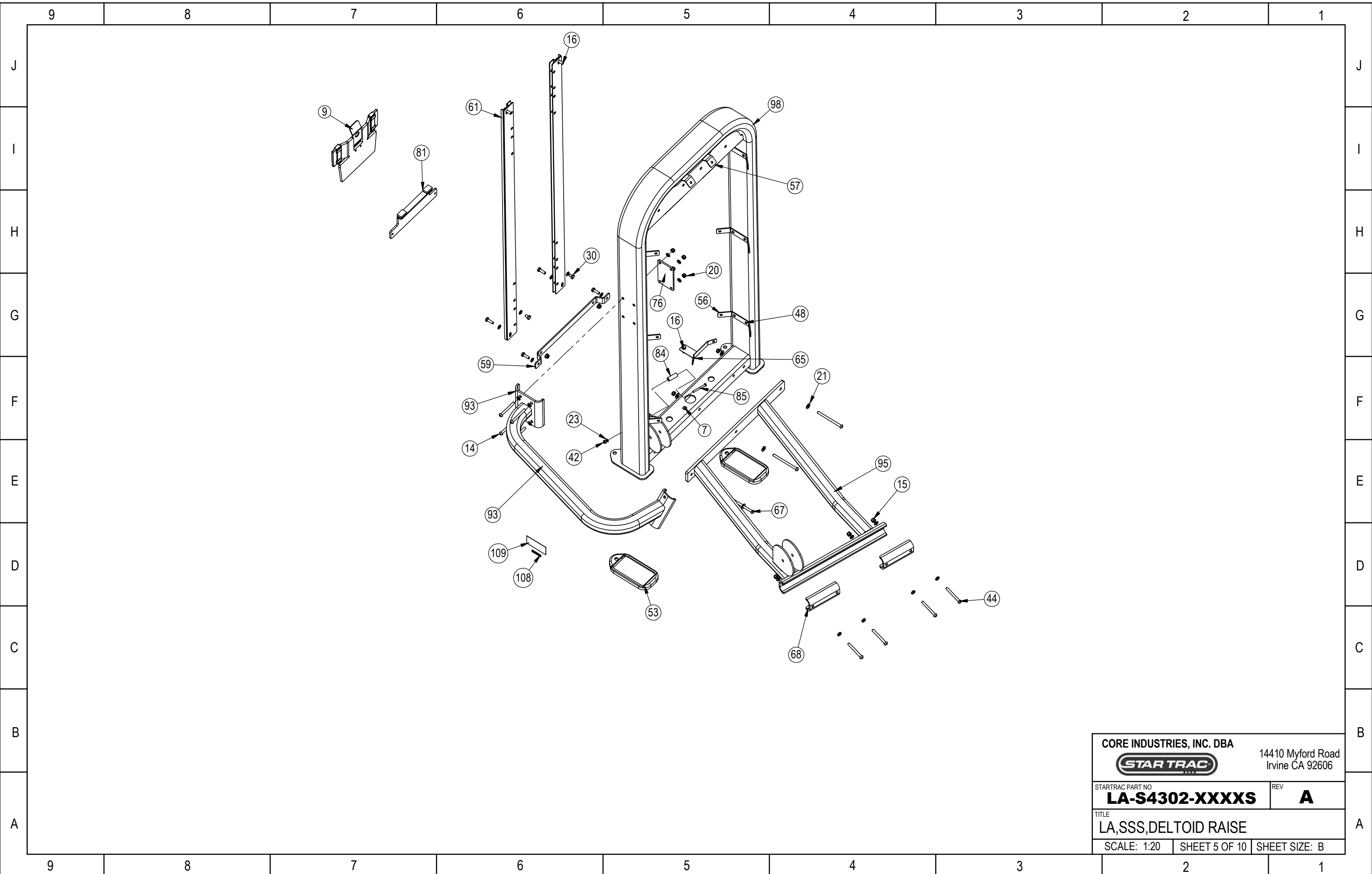


CORE INDUSTRIES, INC. DBA
STAR TRAC
 14410 Myford Road
 Irvine CA 92606

STARTRAC PART NO
LA-S4302-XXXXS
 TITLE
LA,SSS,DELTOID RAISE

REV
A

SCALE: 1:20 | SHEET 4 OF 10 | SHEET SIZE: B

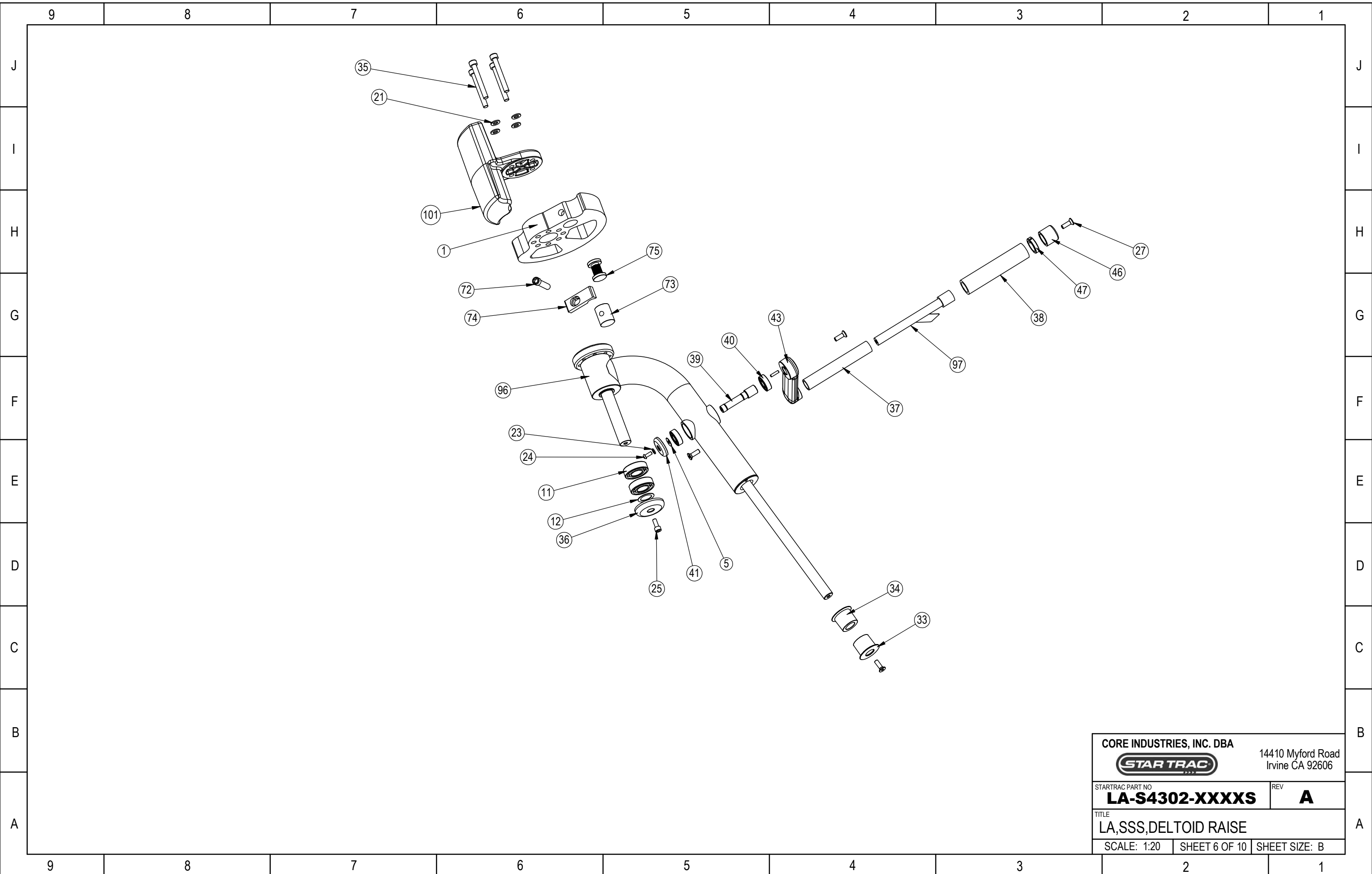


CORE INDUSTRIES, INC. DBA
STAR TRAC
 14410 Myford Road
 Irvine CA 92606

STARTRAC PART NO
LA-S4302-XXXXS REV **A**

TITLE
LA,SSS,DELTOID RAISE

SCALE: 1:20 SHEET 5 OF 10 SHEET SIZE: B

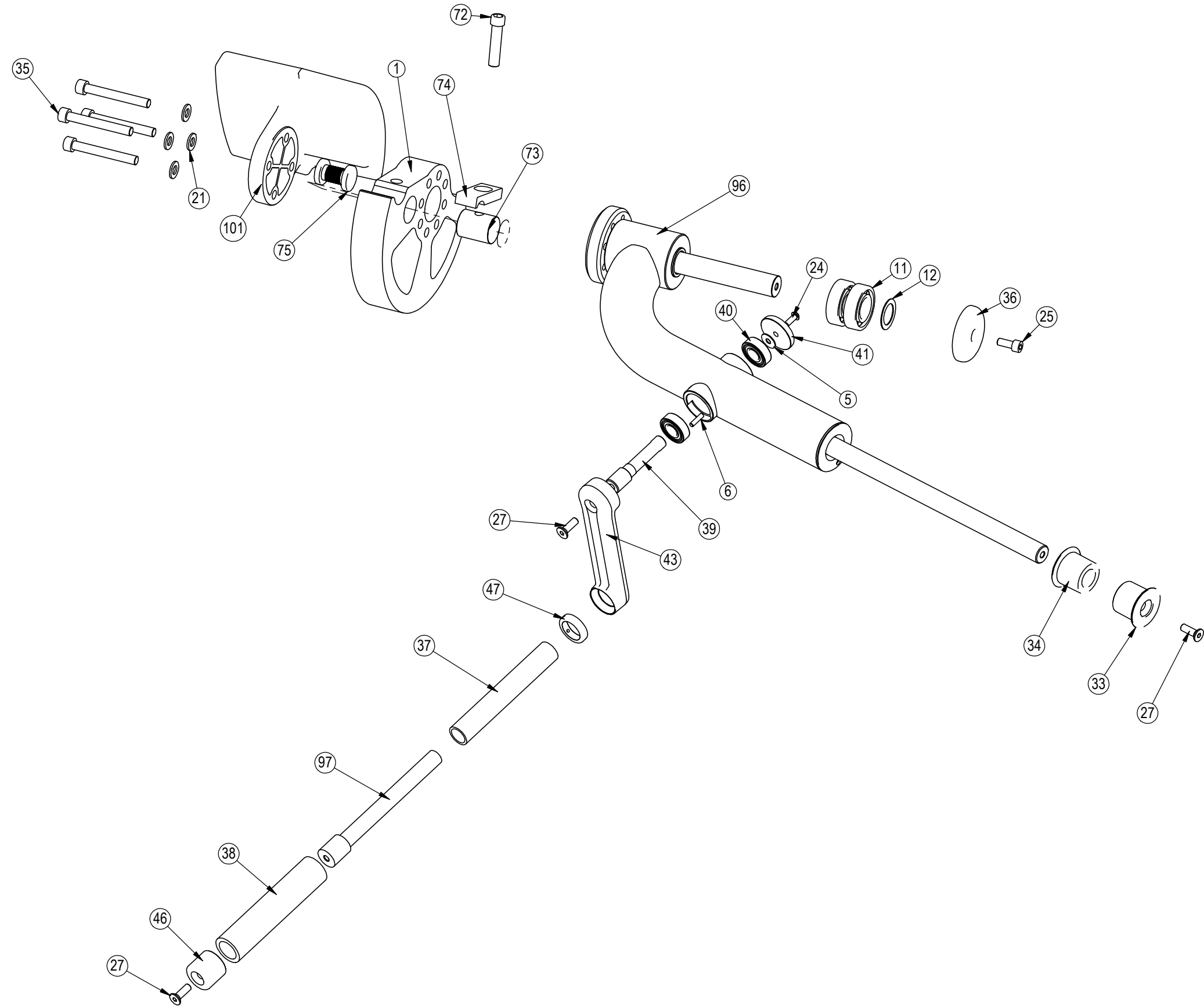


CORE INDUSTRIES, INC. DBA
STAR TRAC
 14410 Myford Road
 Irvine CA 92606

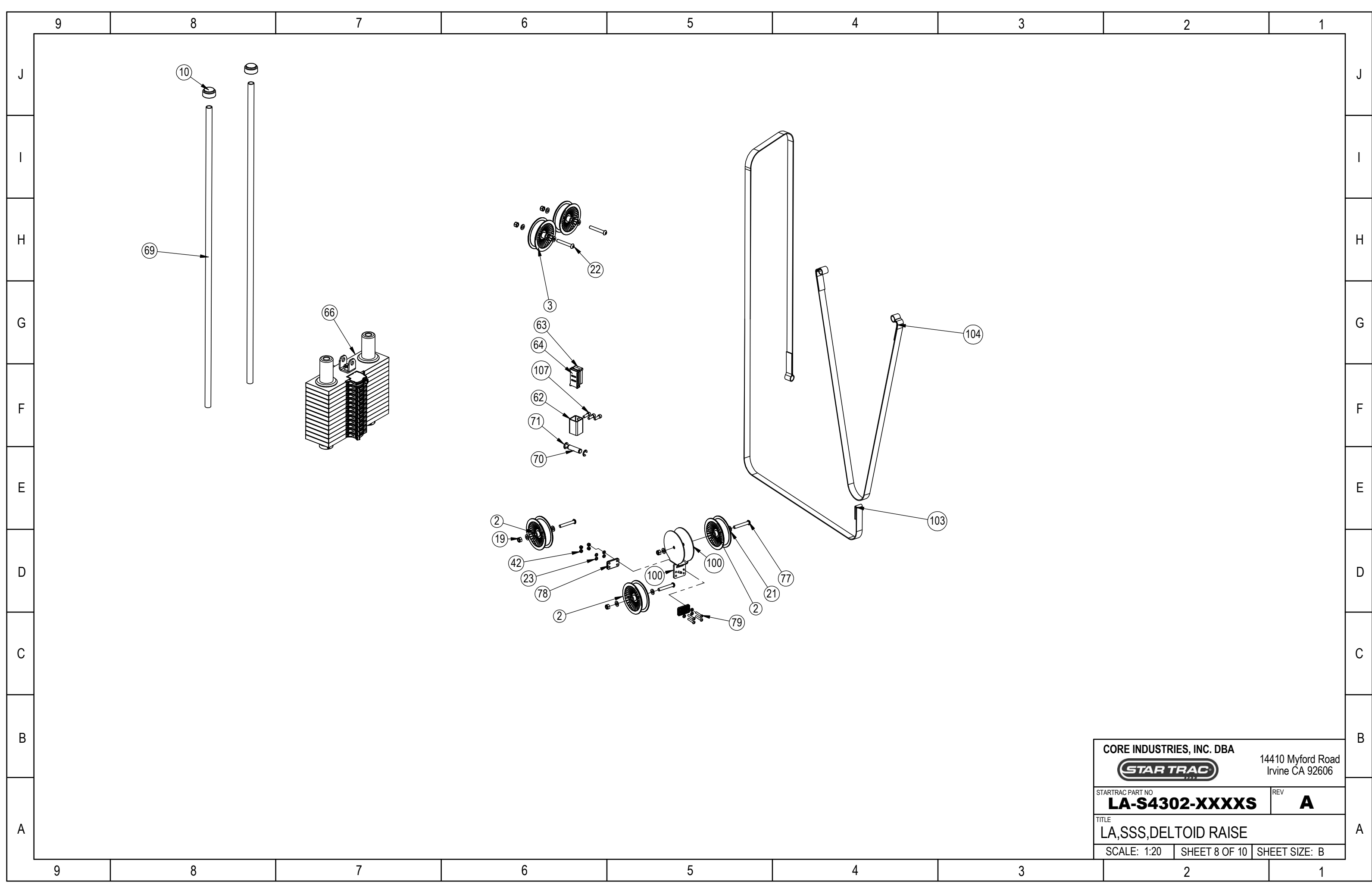
STARTRAC PART NO
LA-S4302-XXXXS REV **A**

TITLE
LA,SSS,DELTOID RAISE

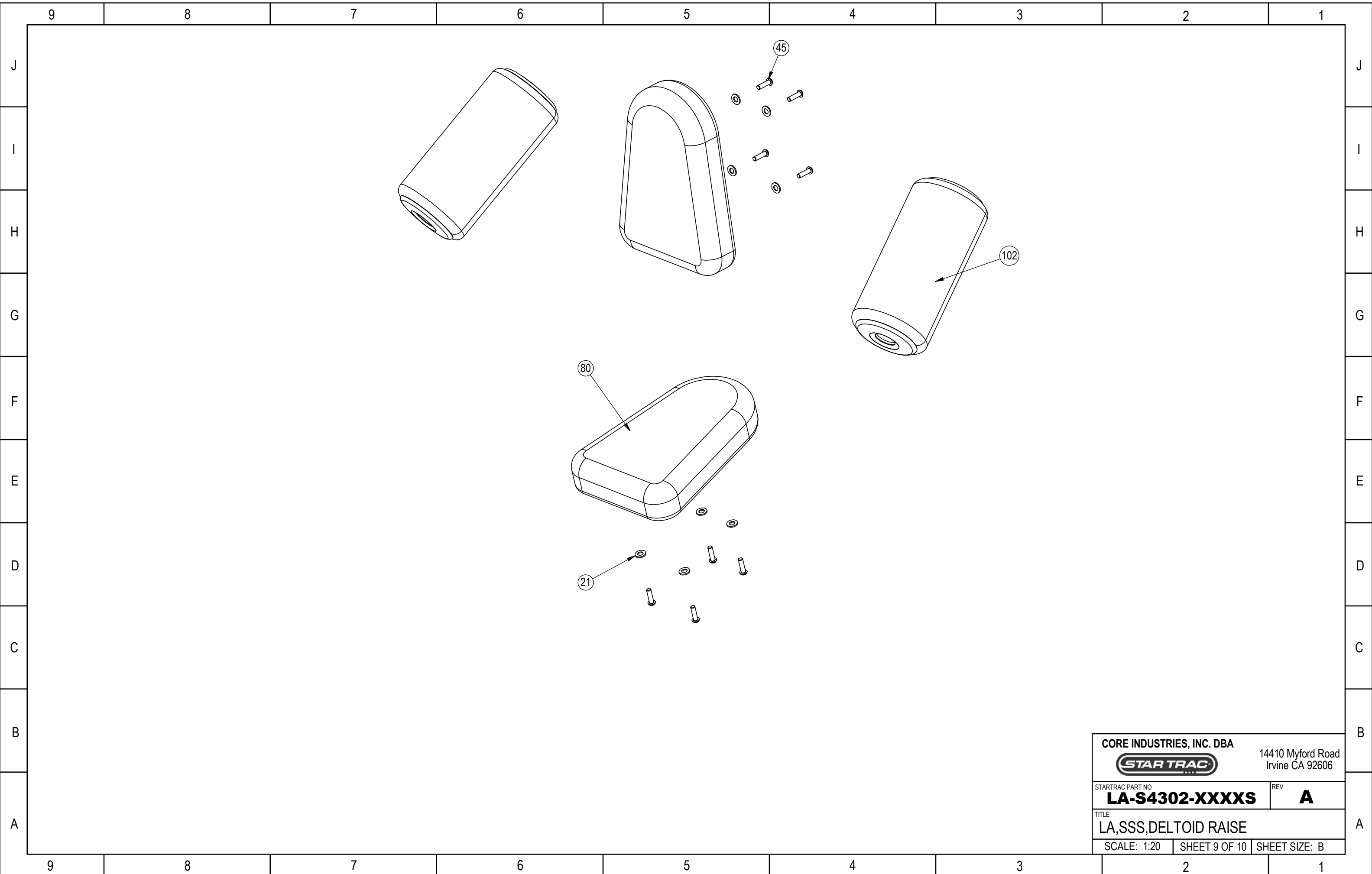
SCALE: 1:20 SHEET 6 OF 10 SHEET SIZE: B



CORE INDUSTRIES, INC. DBA		14410 Myford Road Irvine CA 92606	
STARTRAC PART NO	LA-S4302-XXXXS	REV	A
TITLE LA,SSS,DELTOID RAISE			
SCALE: 1:20	SHEET 7 OF 10	SHEET SIZE: B	



CORE INDUSTRIES, INC. DBA		14410 Myford Road Irvine CA 92606	
STARTRAC PART NO	LA-S4302-XXXXS		REV A
TITLE LA,SSS,DELTOID RAISE			
SCALE: 1:20	SHEET 8 OF 10	SHEET SIZE: B	

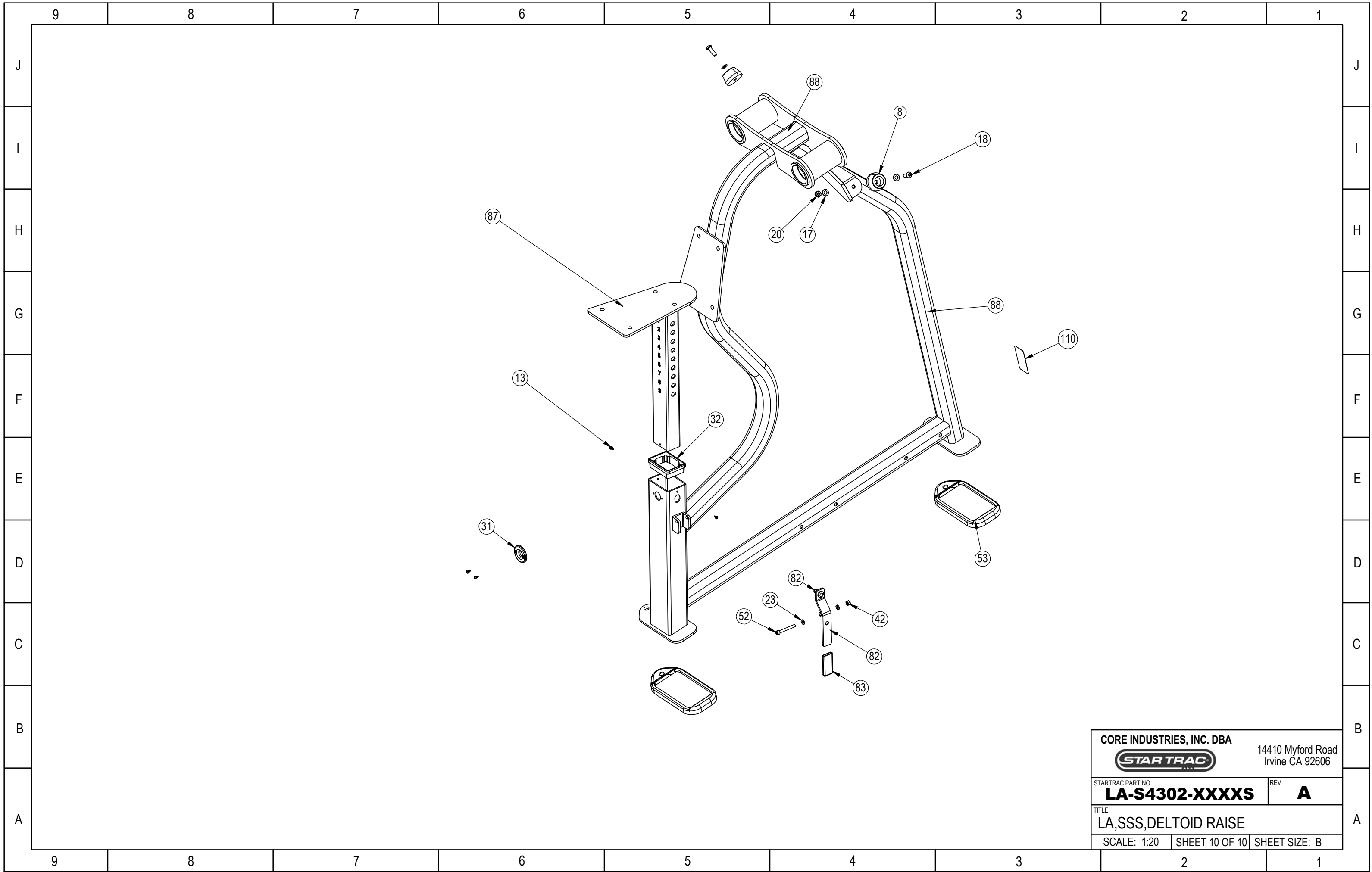


CORE INDUSTRIES, INC. DBA
STAR TRAC
 14410 Myford Road
 Irvine CA 92606

STARTRAC PART NO
LA-S4302-XXXXS REV **A**

TITLE
 LA,SSS,DELTOID RAISE

SCALE: 1:20 SHEET 9 OF 10 SHEET SIZE: B



CORE INDUSTRIES, INC. DBA		14410 Myford Road Irvine CA 92606	
STAR TRAC			
STARTRAC PART NO	LA-S4302-XXXXS	REV	A
TITLE LA,SSS,DELTOID RAISE			
SCALE: 1:20	SHEET 10 OF 10	SHEET SIZE: B	