

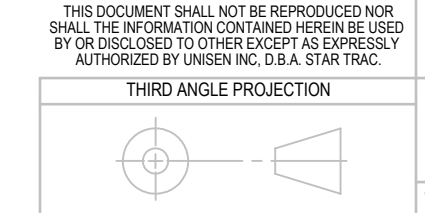
REVISION HISTORY				
REV	DATE	DESCRIPTION	ECO	BY
A	7/14/2008	PRODUCTION RELEASE	100244	SLS
B	9/24/2008	HARDWARE EXCHANGED OUT; RIVET NUT MOVED TO THIS LEVEL	100315	CSM
C	10/9/2008	REPLACED 4900-0087 WITH 4900-0588	100329	DMS
D	1/28/2009	REPLACE 3211-0135 WITH 3211-0250; ROTATE FRAME; KNEE PAD HEIGHT CHANGED; ADD 4900-0101, 2130-4253 TO WEIGHT STACKS	100406	CSM
E	3/3/2009	CHANGE ITEM 59 IS SPRING PIN 4900-0629 WAS DOWEL PIN 4900-0016	100430	PCH

ITEM NO.	PART NUMBER	DESCRIPTION	Default/QTY.
15	4900-UPHX	UPHOLSTERY, TBD	.50 LIN. YDS.
16	1400-0001	TUBE, ROUND, 1", RUBBER, BLK	41 IN.

ITEM NO.	PART NUMBER	DESCRIPTION	Default/QTY.
17	2120-0292	Guide, Bearing, 10", 1/2-20	2
18	2120-0379	STANDOFF, 2", ALUMINUM	6
19	2120-3347	CLAMP, BELT BARREL, 1" X 1.30, KNURLED	1
20	2120-3866	SPACER, PULLEY COVERS	1
21	2120-3909	SHAFT, KNEE PIVOT, CHIN DIP	1
22	2120-4013	STOP, 1.0 SHAFT	2
23	2120-4014	CAP, BEARING TUBE STOP	2
24	2140-0273	SHEET, BENT, 16 GA X 60, GUARD	2
25	2163-0128	PLATE, FOOT PAD, 25 X 6.5 X 10	4
26	2210-0001	SHROUD, UPPER, PRO	2
27	2210-0002	SHROUD, LOWER, LONG, INSIDE, PRO	1
28	2210-0004	SHROUD, LOWER, LONG, OUTSIDE, PRO	1
29	2400-0034	PAD, FOOT, RUBBER, 6.5 X 10	4
30	3211-0136	ASSY, WELD, ROM, KNEE PIVOT	1
31	4161-0074	SCREW, #8-18x1-1/2, PHT-AB, PH, CS	14
32	4210-0029	FHCS, 3/8-16 X 1.00	10
33	4220-0043	SHCS, 5/16-18X1 1/2, BLK	1
34	4230-0053	BHSCS, 3/8-16 X 4, BRIGHT, Z	3
35	4230-0056	BHSCS, 3/8 X 3, BRIGHT, Z	2
36	4230-0057	BHSCS, 3/8 X 2 1/4, BRIGHT, Z	2
37	4230-0059	BHSCS, 3/8-16 X 4 1/4, BRIGHT, Z	1
38	4230-0060	BHSCS, 3/8-16 X 2 3/4, BRIGHT, Z	1
39	4230-0065	BHSCS, 3/8-16 X 1/2, BRIGHT, Z	2
40	4230-0066	BHSCS, 3/8-16 X 3/4, BRIGHT, Z	4
41	4230-0071	BHSCS, 1/2-13 X 3, BRIGHT, Z	4
42	4230-0075	BHSCS, 1/2-13 X 1, BRIGHT, Z	2
43	4230-0080	BHSCS, 5/16-18 X 2 3/4, BRIGHT, Z	4
44	4230-0093	BHSCS, 1/4-20 X 3/4, BRIGHT, Z	2
45	4250-0001	SSS, 10-32 X 1/8, BLK	8
46	4500-0002	NUT, NYLOC, 5/16-18	1
47	4500-0029	NUT, NYLOC, JAM, 3/8-16, Z	18
48	4500-0044	NUT, WELD, 5/16-18, SLAB BASE	1
49	4500-0046	U-NUT, #8, PANEL, 025-125	14
50	4500-0048	U-NUT, 1/4-20, EDGE, 531, 025-150	2
51	4500-0071	NUT, NYLOC, 1/2-13	4
52	4600-0005	WASHER, USS, 1/2, Z	2
53	4600-0007	WASHER, SAE, 5/16, Z	5
54	4600-0008	WASHER, SAE, 1/2, Z	8
55	4600-0009	WASHER, SAE, 3/8-16, Z	40
56	4600-0025	MACHINE BUSHING, 1", 18 GAGE	4
57	4800-0001	BELT, MEGTROL, SPOOL	97 IN.
58	4900-0005	CAP, HANDLE, 1", CHROME	4
59	4900-0629	Spring Pin, 1/8 X 3/4	4
60	4900-0037	BEARING, FLANGE, 1.008 X 1.00H	2
61	4900-0118	BEARING, ROLLER, 1", L16 OPEN	4
62	4900-0129	LINEAR SHAFT, 1" X 60	2
63	4900-0136	CAP, WEIGHT, NO INDICATOR, BLK	2
64	4900-0139	BEARING, 1 ID X 2 OD, NR16-Z	4
65	4900-0157	STOP, 1R X 1 3/8, F-DAS	4
66	4900-0183	SHOCK, 30 lbs, 9.50C X 5.50S	1
67	4900-0440	PULLEY, BELT, 4.75D, 3/8B, 1.5W, MOLDED	2
68	4900-0448	RIVET, 3/16, 126-250 GRIP, BLK ALUM	4
69	4900-0540	BALL STUD, 10 mm X 75, LG, THD	2
70	4900-0576	PULL PIN, 1/2", K-520PR	1
71	5210-0100	PLAC, IMPACT, PR-S6302, CHIN/DIP ASSIST	1
72	5210-0143	PLAC, IMPACT, HORZ S6302, CHIN/DIP ASSIST	1
73	5220-0002	LABEL, SAFETY, KEEP HANDS, SMALL	1
74	5220-0005	LABEL, SAFETY, SECURE TO FLOOR	1
75	5220-0023	LABEL, SAFETY, MAIN WARNING, IMPACT	1
76	5230-0008	LOGO, STAR TRAC, IMPACT, TOP SHROUD	2
77	5230-0009	LOGO, IMPACT, LOWER SHROUD	1
78	5230-0038	LABEL, NAME, CHIN/DIP ASSIST	2
79	5290-0001	SERIAL NUMBER	1
80	4900-0574	Rivet Nut, 3/8-16	2
81	4220-0050	SCREW, SHCS, 3/8-24 X 4.25, Z	6
82	4900-0588	CAP, 2.0 x 2.0, BLACK, TEXTURED	8
83	x3310-0167	ASSY, W-STK, 15LB/330LBS, 60 LB CB	1
84	4230-0060	BHSCS, 3/8-16 X 1, BRIGHT, Z	2
85	4900-0101	COLLAR, SHAFT	2
86	2120-4293	STOP, WT STACK TRAVEL	2

- NOTES:
1. INTERPRET DRAWING PER ASME Y14.5M-1994.
 2. IF APPLICABLE, CRITICAL DIMENSIONS LABELED.
 3. ALL HARDWARE IS KITTED PER 3700-0254.
 4. ALL UPHOLSTERY IS KITTED PER 3700-0253.
 5. EST. GROSS WT. 835 LBS.
 6. KNEE PAD ASSY SETUP HEIGHT.

DOCUMENT STATUS:
RELEASED
NOTICE OF PROPRIETARY INFORMATION



MATERIAL
SEE BOM

FINISH
N/A

VENDOR: N/A

INITIAL DATE
 DRJ 7/14/2008

CHECKED APPROVED

U.O.M. INCH

PIN: N/A

UNLESS OTHERWISE SPECIFIED DIMENSIONS ARE IN INCHES. TOLERANCES ARE:

DECIMALS ANGLES
 X.XX = ±.03
 X.XXX = ±.010
 X.XXXX = ±.010

UNISEN, INC. DBA **STAR TRAC** 14410 Myford Road Irvine CA 92606

STARTING PART NO. **9PR-S6302AXXXXX** REV **F**

CHIN DIP ASSIST, PR

SCALE: 1:12 | SHEET 1 OF 2 | SHEET SIZE: D

