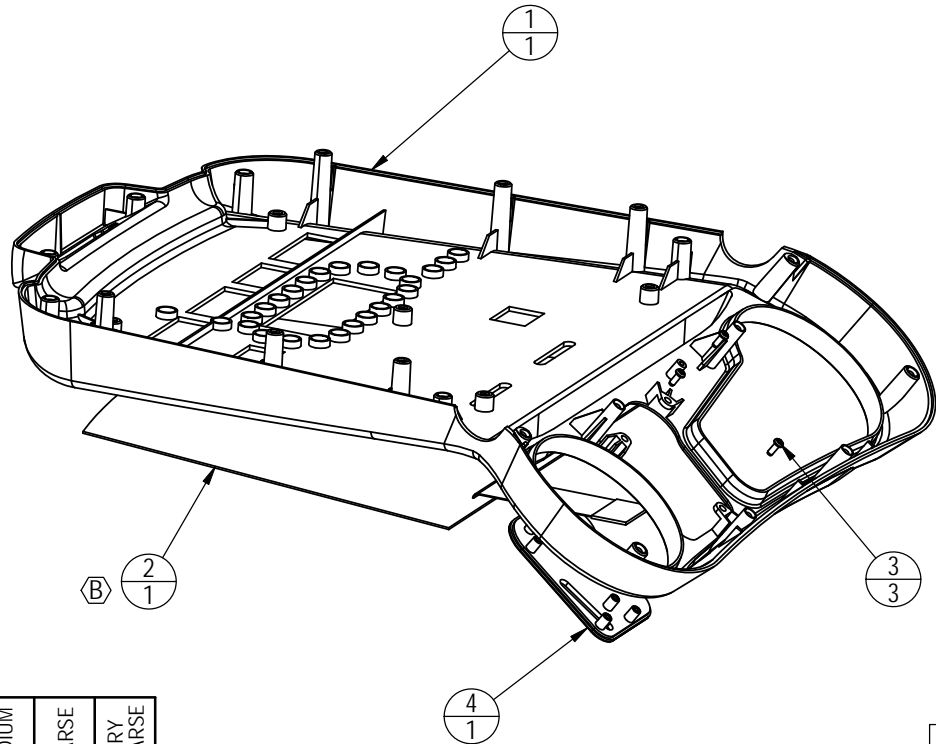


NOTES:  
 1. CLEAN PART WITH DENATURED ALCOHOL PRIOR TO ADHERING KEYPADS

REVISIONS				
REV.	DATE	DESCRIPTION	ECO	BY
A	3/7/2007	PRODUCTION RELEASE	11556	FJM
B	06-22-11	REPLACE 740-2006 (1) FOR 050-2217 (1)	13133	SCN



DOCUMENT STATUS:

NOTICE OF PROPRIETARY INFORMATION  
 THIS DOCUMENT SHALL NOT BE REPRODUCED NOR SHALL THE INFORMATION CONTAINED HEREIN BE USED BY OR DISCLOSED TO OTHER EXCEPT AS EXPRESSLY AUTHORIZED BY CORE INDUSTRIES, INC., D.B.A. STAR TRAC.

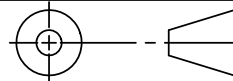
MATERIAL  
SEE BOM

FINISH  
N/A

VENDOR: N/A P/N: N/A

ITEM NO.	PART NUMBER	DESCRIPTION	QTY.
1	020-6926	DISPLAY, FRONT, SPORT BIKE	1
2	050-2217	KEYPAD, MAIN DISPL, E-TBT/BK, G2	1
3	110-3163	SCREW, M3x0.5x8L,PHT,PH,CS,ZI	3
4	740-0013	ASSY, OPER, INST, SPORT	1

THIRD ANGLE PROJECTION



CORE INDUSTRIES., INC. DBA



14410 Myford Road  
Irvine CA 92606

STARTRAC PART NO. **740-2012** REV **B**

TITLE  
ASSY, KEYPAD & PLAS, S-TBT & S- BIKE

SCALE: 1:4 SHEET 1 OF 1 SHEET SIZE: A

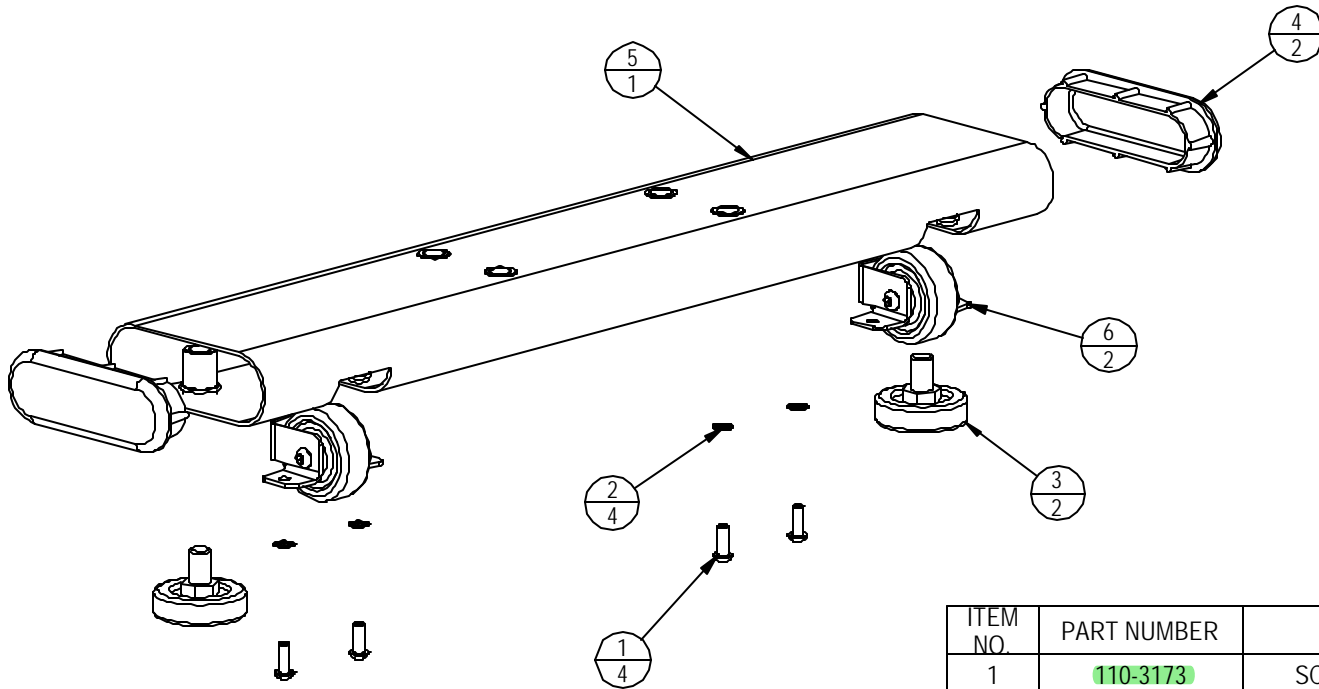
CLASS OF WORK	FINE	MEDIUM	COARSE	VERY COARSE
			<b>X</b>	

UNLESS OTHERWISE SPECIFIED DIMS ARE IN mm. TOLERANCES FOR MEASURE OF LENGTH ARE: ANGLES ±2°	0.5 to 3	±0.05	±0.1	±0.2	----
	> 3 to 6	±0.05	±0.1	±0.3	±0.5
	> 6 to 30	±0.1	±0.2	±0.5	±1
	> 30 to 120	±0.15	±0.3	±0.8	±1.5
	> 120 to 400	±0.2	±0.5	±1.2	±2.5
	> 400 to 1000	±0.3	±0.8	±2	±4
	> 1000 to 2000	±0.5	±1.2	±3	±6
	> 2000	----	±2	±4	±8

NOTES:

REVISIONS				
REV.	DATE	DESCRIPTION	ECO	BY
A	3/7/2007	PRODUCTION RELEASE	11556	FJM



ITEM NO.	PART NUMBER	DESCRIPTION	QTY.
1	110-3173	SCREW, M6x16, BHC, HE, ISO7380	4
2	120-3257	WASHER, M6, TEETH, 0.6 THICK	4
3	140-3247	LEVELER, FEET ADJUSTMENT	2
4	740-2024	CAP, OVAL, FEET, SP BK	2
5	740-2026	FEET, FRONT, SPORT BIKE	1
6	740-2027	ASSY, WHEEL, SPORT BIKE	2

**DOCUMENT STATUS:  
RELEASE**

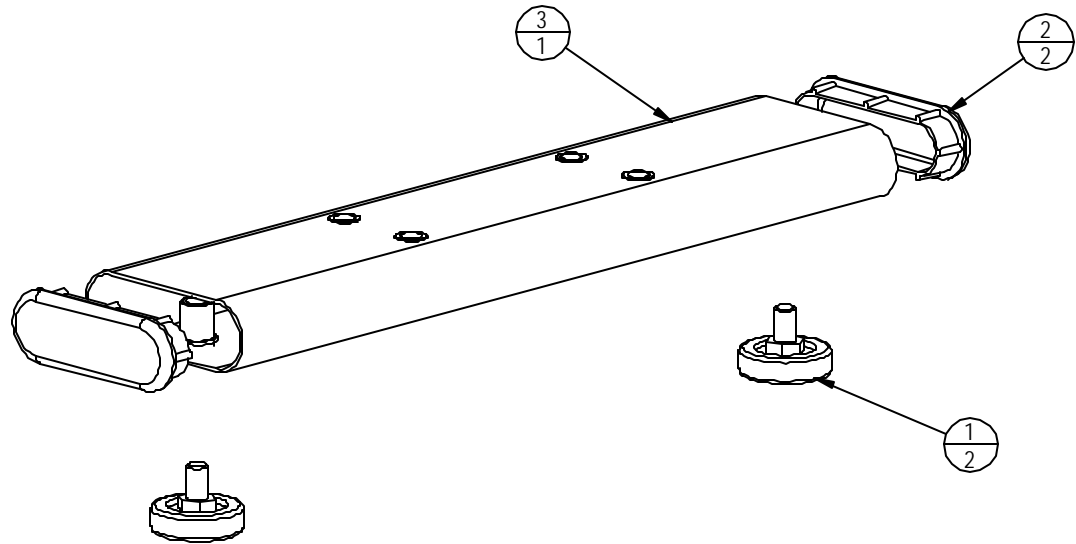
MATERIAL SEE BOM		TOLERANCES UNLESS OTHERWISE SPECIFIED X.XXX = ± .010" (0.25MM) ANGLES = ± 2* X.XX = ± .030" (0.76MM) FRACTIONS = ± 1/32 X.X = ± .050" (1.27MM) X. = ± .125" (3.20MM)		UNISEN, INC. DBA <b>STAR TRAC</b> 14410 Myford Road Irvine CA 92606	
FINISH N/A		INITIAL	DATE	STARTRAC PART NO	REV
VENDOR:		DRAWN	FJM	01-27-07	740-2022
P/N: 748-4-8930-101		CHECKED			A
		APPROVED			
		U.O.M.			
		TITLE		ASSY, FRONT FEET, SPORT BIKE	
		SCALE: 1:4	SHEET 1 OF 1	SHEET SIZE: A	

NOTICE OF PROPRIETARY INFORMATION  
THIS DOCUMENT SHALL NOT BE REPRODUCED NOR SHALL THE INFORMATION CONTAINED HEREIN BE USED BY OR DISCLOSED TO OTHER EXCEPT AS EXPRESSLY AUTHORIZED BY UNISEN

10 9 8 7 6 5 4 3 2 1

H NOTES:

REVISIONS				
REV.	DATE	DESCRIPTION	ECO	BY
A	03-07-07	PRODUCTION RELEASE	11556	FJM



ITEM NO.	PART NUMBER	DESCRIPTION	??2/QTY.
1	140-3247	LEVELER, FEET ADJUSTMENT	2
2	740-2024	CAP, OVAL, FEET, SP BK	2
3	740-2025	FEET, REAR, SPORT BIKE	1

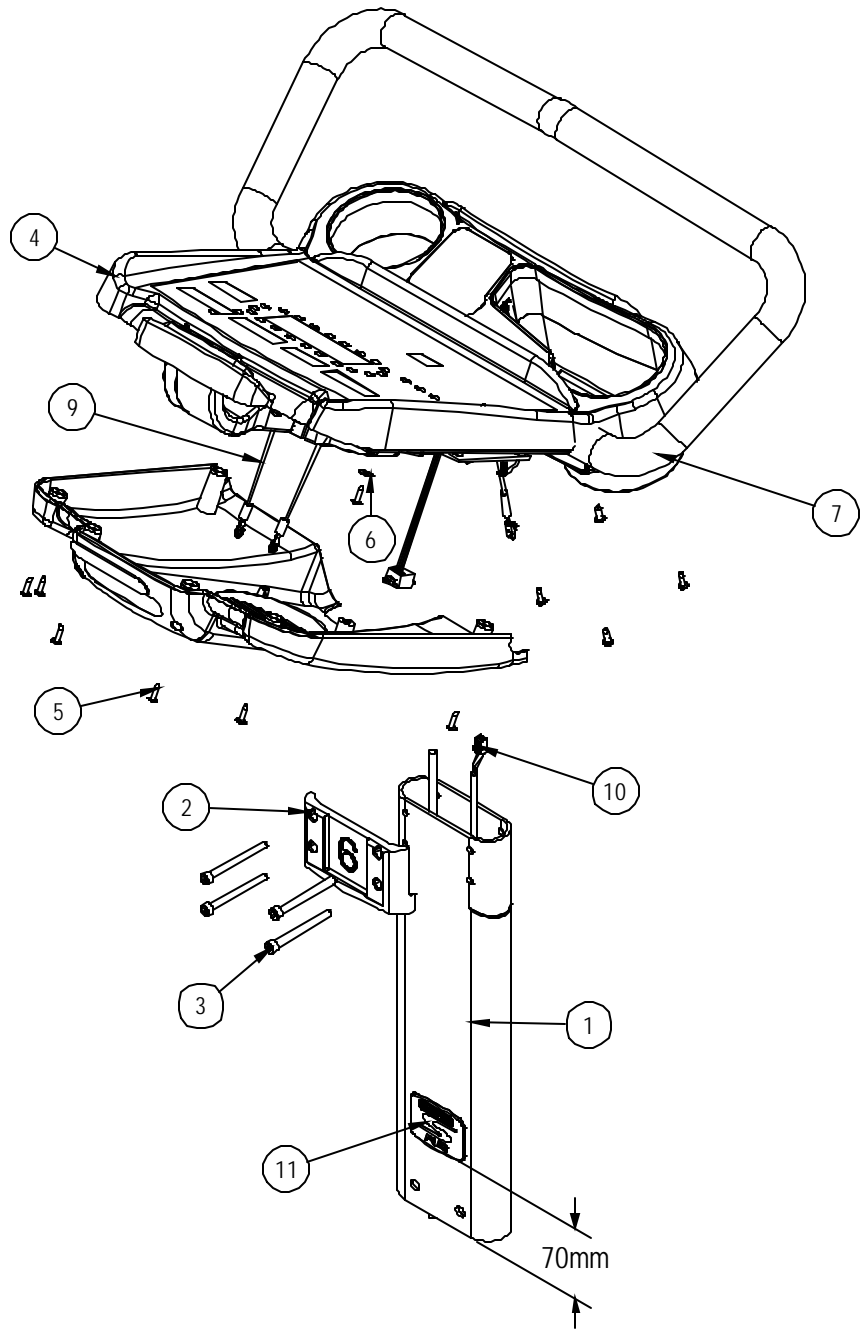
**DOCUMENT STATUS:  
RELEASE**

MATERIAL SEE BOM	TOLERANCES UNLESS OTHERWISE SPECIFIED		<b>UNISEN, INC. DBA</b>  14410 Myford Road Irvine CA 92606
	X.XXX = ± .010" (0.25MM)	ANGLES = ± 2*	
FINISH N/A	INITIAL	DATE	STARTRAC PART NO
	DRAWN FJM	01-27-07	<b>740-2023</b>
VENDOR:	CHECKED		REV <b>A</b>
	APPROVED		TITLE
P/N: <b>748-4-8940-104</b>	U.O.M.		<b>ASSY, BACK FEET, SPORT BIKE</b>
			SCALE: 1:4   SHEET 1 OF 1   SHEET SIZE: A

NOTICE OF PROPRIETARY INFORMATION  
 THIS DOCUMENT SHALL NOT BE REPRODUCED NOR SHALL THE INFORMATION CONTAINED HEREIN BE USED BY OR DISCLOSED TO OTHER EXCEPT AS EXPRESSLY AUTHORIZED BY UNISEN

10 9 8 7 6 5 4 3 2 1

REVISIONS				
REV.	DATE	DESCRIPTION	ECO	BY
A	03.20.07	INITIAL RELEASE OF PRODUCTION	11567	SJ
B	11-14-07	ADD ID BADGES TO S-SERIES PRODUCT	11754	AK



ITEM NO.	PART NUMBER	DESCRIPTION	QTY.
1	740-2058	FRONT NECK, S BIKE, UB	1
2	740-0022	SPACER, NECK JOINT, SP BK	1
3	110-3169	SCREW, M6x65, SHC, HE, ISO4762	4
4	740-2013	ASSY, DISPLAY ELECT, SP BIKE	1
5	110-3165	SCREW, M4x0.7x14L,PHT,PH,CS,ZI	22
6	120-0590	WASHER, #8 FLAT, SAE	2
7	740-2062	WELDMENT, HANDLEBAR, RB	1
8	740-2005	ASSY, CABLE, MAIN I/O, UPPER, SB	1
9	740-0009	ASSY, CABLE, DISPLAY GND, SPORT	2
10	740-0005	ASSY, CABLE, EXT POWER, SIMPLE, SPORT	1
11	050-2076	BADGE, PRODUCT, S-RB	1

NOTES:

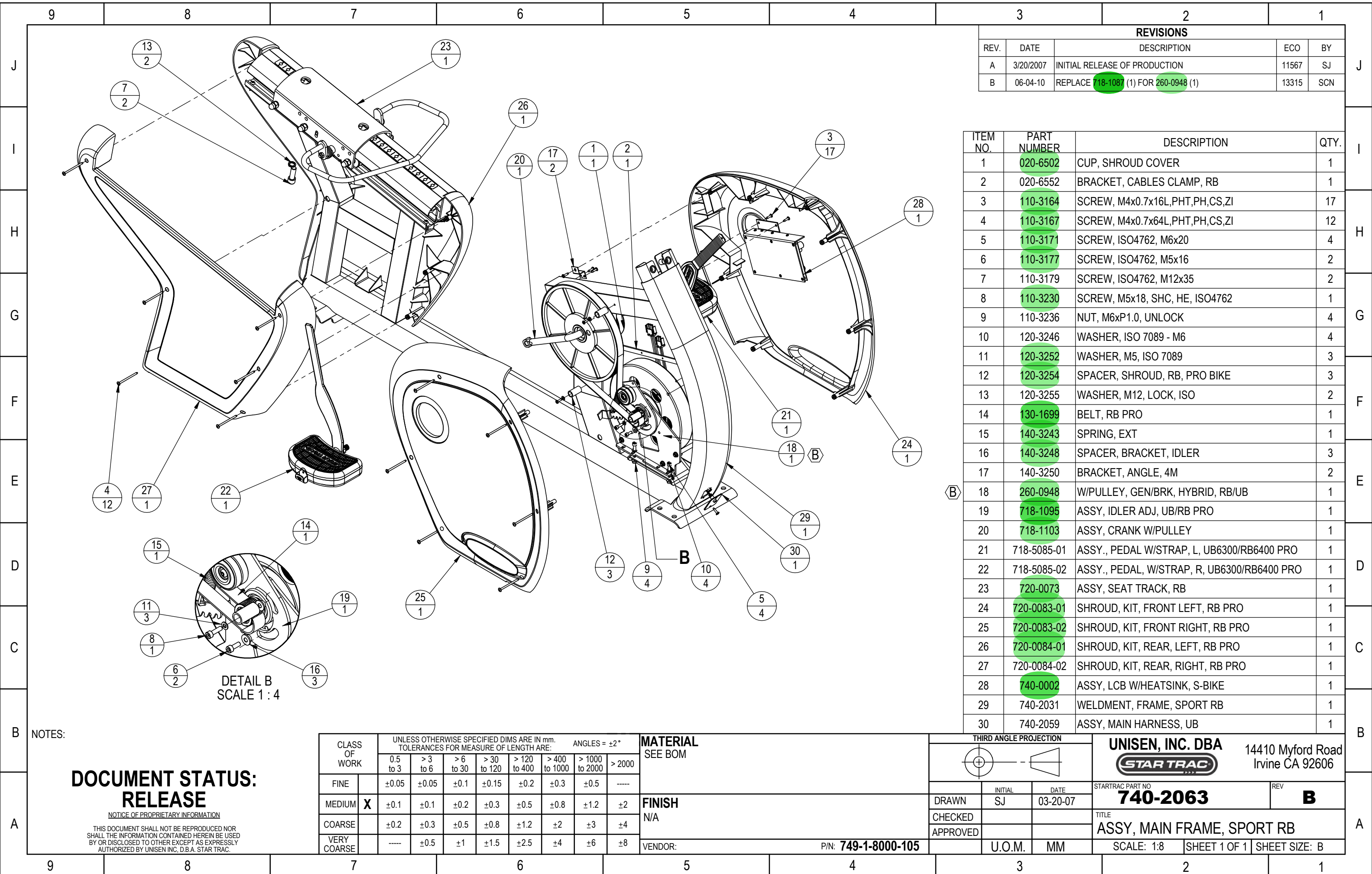
**DOCUMENT STATUS:  
RELEASE**

NOTICE OF PROPRIETARY INFORMATION  
THIS DOCUMENT SHALL NOT BE REPRODUCED NOR  
SHALL THE INFORMATION CONTAINED HEREIN BE  
USED BY OR DISCLOSED TO OTHER EXCEPT AS  
EXPRESSLY AUTHORIZED BY UNISEN

<b>MATERIAL</b>	TOLERANCES UNLESS OTHERWISE SPECIFIED X.XXX = ± .010" (0.25MM) ANGLES = ± 2° X.XX = ± .030" (0.76MM) FRACTIONS = ± 1/32 X.X = ± .050" (1.27MM) X = ± .125" (3.20)
<b>FINISH</b>	DRAWN: INITIAL: SJ, DATE: 01.27.07 CHECKED: _____ APPROVED: _____
<b>VENDOR:</b>	U.O.M.

<b>UNISEN, INC. DBA</b> 14410 Myford Road Irvine CA 92606	
<b>STAR TRAC</b>	
PART NO: <b>740-2061</b>	REV: <b>B</b>
TITLE: <b>ASSY, CONSOLE/HANDLEBAR, SPORT, UB</b>	
SCALE: 1:1	SHEET 1 OF 1   SHEET SIZE: B

P/N: 740-2061



REVISIONS				
REV.	DATE	DESCRIPTION	ECO	BY
A	3/20/2007	INITIAL RELEASE OF PRODUCTION	11567	SJ
B	06-04-10	REPLACE 718-1087 (1) FOR 260-0948 (1)	13315	SCN

ITEM NO.	PART NUMBER	DESCRIPTION	QTY.
1	020-6502	CUP, SHROUD COVER	1
2	020-6552	BRACKET, CABLES CLAMP, RB	1
3	110-3164	SCREW, M4x0.7x16L,PHT,PH,CS,ZI	17
4	110-3167	SCREW, M4x0.7x64L,PHT,PH,CS,ZI	12
5	110-3171	SCREW, ISO4762, M6x20	4
6	110-3177	SCREW, ISO4762, M5x16	2
7	110-3179	SCREW, ISO4762, M12x35	2
8	110-3230	SCREW, M5x18, SHC, HE, ISO4762	1
9	110-3236	NUT, M6xP1.0, UNLOCK	4
10	120-3246	WASHER, ISO 7089 - M6	4
11	120-3252	WASHER, M5, ISO 7089	3
12	120-3254	SPACER, SHROUD, RB, PRO BIKE	3
13	120-3255	WASHER, M12, LOCK, ISO	2
14	130-1699	BELT, RB PRO	1
15	140-3243	SPRING, EXT	1
16	140-3248	SPACER, BRACKET, IDLER	3
17	140-3250	BRACKET, ANGLE, 4M	2
18	260-0948	W/PULLEY, GEN/BRK, HYBRID, RB/UB	1
19	718-1095	ASSY, IDLER ADJ, UB/RB PRO	1
20	718-1103	ASSY, CRANK W/PULLEY	1
21	718-5085-01	ASSY., PEDAL W/STRAP, L, UB6300/RB6400 PRO	1
22	718-5085-02	ASSY., PEDAL, W/STRAP, R, UB6300/RB6400 PRO	1
23	720-0073	ASSY, SEAT TRACK, RB	1
24	720-0083-01	SHROUD, KIT, FRONT LEFT, RB PRO	1
25	720-0083-02	SHROUD, KIT, FRONT RIGHT, RB PRO	1
26	720-0084-01	SHROUD, KIT, REAR, LEFT, RB PRO	1
27	720-0084-02	SHROUD, KIT, REAR, RIGHT, RB PRO	1
28	740-0002	ASSY, LCB W/HEATSINK, S-BIKE	1
29	740-2031	WELDMNT, FRAME, SPORT RB	1
30	740-2059	ASSY, MAIN HARNESS, UB	1

NOTES:

**DOCUMENT STATUS:  
RELEASE**

NOTICE OF PROPRIETARY INFORMATION  
THIS DOCUMENT SHALL NOT BE REPRODUCED NOR SHALL THE INFORMATION CONTAINED HEREIN BE USED BY OR DISCLOSED TO OTHER EXCEPT AS EXPRESSLY AUTHORIZED BY UNISEN INC, D.B.A. STAR TRAC.

CLASS OF WORK	UNLESS OTHERWISE SPECIFIED DIMS ARE IN mm. TOLERANCES FOR MEASURE OF LENGTH ARE:							ANGLES = ±2°
	0.5 to 3	>3 to 6	>6 to 30	>30 to 120	>120 to 400	>400 to 1000	>1000 to 2000	
FINE	±0.05	±0.05	±0.1	±0.15	±0.2	±0.3	±0.5	----
MEDIUM <b>X</b>	±0.1	±0.1	±0.2	±0.3	±0.5	±0.8	±1.2	±2
COARSE	±0.2	±0.3	±0.5	±0.8	±1.2	±2	±3	±4
VERY COARSE	----	±0.5	±1	±1.5	±2.5	±4	±6	±8

**MATERIAL**  
SEE BOM

**FINISH**  
N/A

VENDOR: P/N: **749-1-8000-105**

THIRD ANGLE PROJECTION

DRAWN: SJ  
CHECKED:  
APPROVED:

INITIAL: SJ  
DATE: 03-20-07

U.O.M. MM

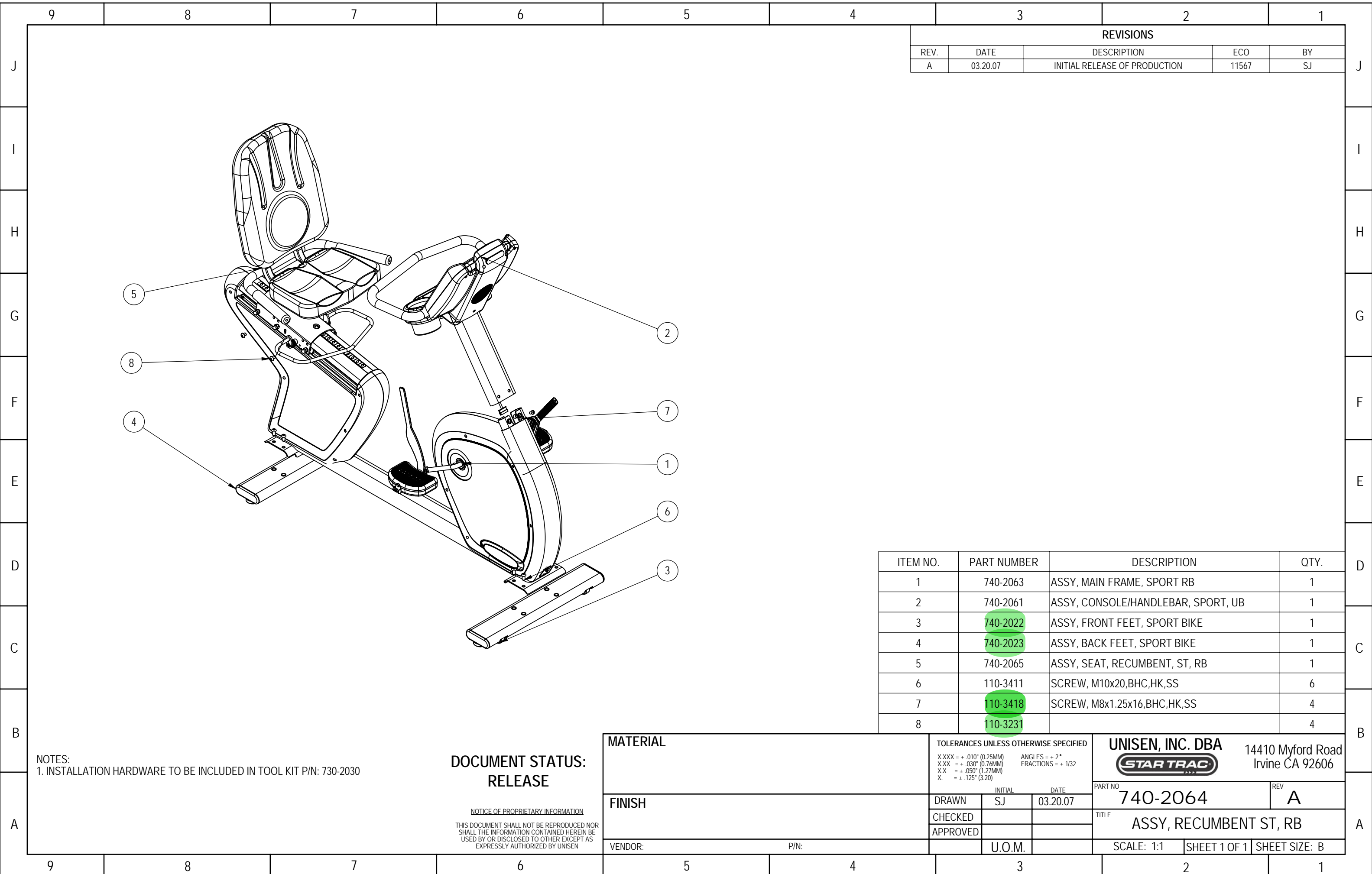
**UNISEN, INC. DBA  
STAR TRAC**

14410 Myford Road  
Irvine CA 92606

STARTRAC PART NO. **740-2063** REV. **B**

TITLE: **ASSY, MAIN FRAME, SPORT RB**

SCALE: 1:8 | SHEET 1 OF 1 | SHEET SIZE: B



REVISIONS				
REV.	DATE	DESCRIPTION	ECO	BY
A	03.20.07	INITIAL RELEASE OF PRODUCTION	11567	SJ

ITEM NO.	PART NUMBER	DESCRIPTION	QTY.
1	740-2063	ASSY, MAIN FRAME, SPORT RB	1
2	740-2061	ASSY, CONSOLE/HANDLEBAR, SPORT, UB	1
3	740-2022	ASSY, FRONT FEET, SPORT BIKE	1
4	740-2023	ASSY, BACK FEET, SPORT BIKE	1
5	740-2065	ASSY, SEAT, RECUMBENT, ST, RB	1
6	110-3411	SCREW, M10x20,BHC,HK,SS	6
7	110-3418	SCREW, M8x1.25x16,BHC,HK,SS	4
8	110-3231		4

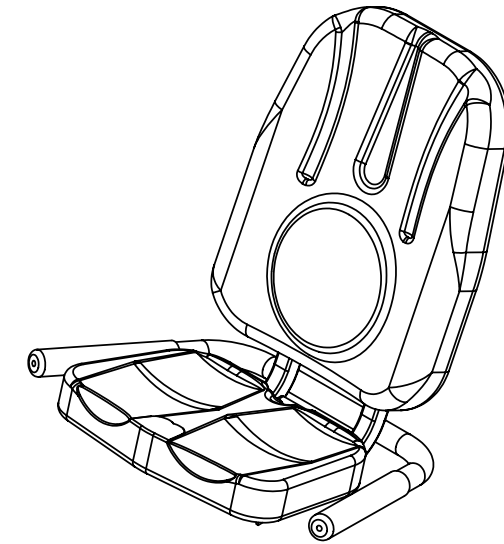
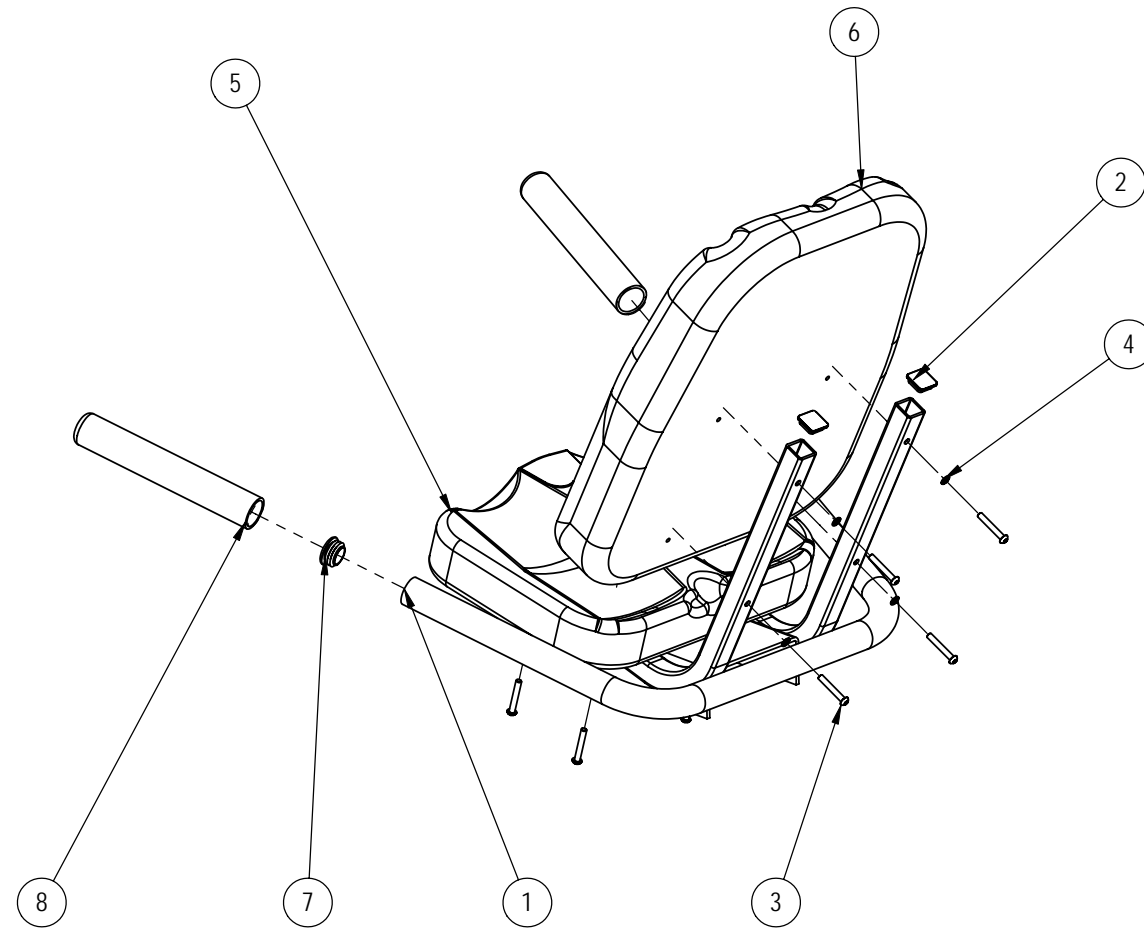
NOTES:  
1. INSTALLATION HARDWARE TO BE INCLUDED IN TOOL KIT P/N: 730-2030

DOCUMENT STATUS:  
RELEASE

NOTICE OF PROPRIETARY INFORMATION  
THIS DOCUMENT SHALL NOT BE REPRODUCED NOR SHALL THE INFORMATION CONTAINED HEREIN BE USED BY OR DISCLOSED TO OTHER EXCEPT AS EXPRESSLY AUTHORIZED BY UNISEN

<b>MATERIAL</b>		TOLERANCES UNLESS OTHERWISE SPECIFIED X.XXX = ± .010" (0.25MM)    ANGLES = ± 2° X.XX = ± .030" (0.76MM)    FRACTIONS = ± 1/32 X.X = ± .050" (1.27MM) X = ± .125" (3.20)		UNISEN, INC. DBA <b>STAR TRAC</b> 14410 Myford Road Irvine CA 92606		
<b>FINISH</b>		INITIAL	DATE	PART NO	REV	
		DRAWN	SJ	03.20.07	740-2064	A
		CHECKED		TITLE		
		APPROVED		ASSY, RECUMBENT ST, RB		
VENDOR:		P/N:		U.O.M.	SCALE: 1:1   SHEET 1 OF 1   SHEET SIZE: B	

REVISIONS				
REV.	DATE	DESCRIPTION	ECO	BY
A	03.20.07	INITIAL RELEASE OF PRODUCTION	11567	SJ



ITEM NO.	PART NUMBER	DESCRIPTION	Default/QTY.
1	740-2068	WELDMENT, SEAT FRAME, ST, RB	1
2	140-3253	ENDCAP, 1.0 "X 1.0" TUBE, RB	4
3	110-3235		8
4	120-3257	WASHER, M6, TEETH, 0.6 THICK	8
5	740-2020	SEAT, BOTTOM, SPORT BIKE	1
6	740-2019	SEAT, BACK, SPORT BIKE	1
7	140-3264	CAP, PLUG, 31.75MM OD X 14-20 GA	2
8	140-3251		2

NOTES:

**DOCUMENT STATUS:  
RELEASE**

NOTICE OF PROPRIETARY INFORMATION

THIS DOCUMENT SHALL NOT BE REPRODUCED NOR SHALL THE INFORMATION CONTAINED HEREIN BE USED BY OR DISCLOSED TO OTHER EXCEPT AS EXPRESSLY AUTHORIZED BY UNISEN

<b>MATERIAL</b>		TOLERANCES UNLESS OTHERWISE SPECIFIED X.XXX = ± .010" (0.25MM)    ANGLES = ± 2° X.XX = ± .030" (0.76MM)    FRACTIONS = ± 1/32 X.X = ± .050" (1.27MM) X = ± .125" (3.20)		UNISEN, INC. DBA <b>STAR TRAC</b> 14410 Myford Road Irvine CA 92606		
<b>FINISH</b>		INITIAL	DATE	PART NO	REV	
		DRAWN	SJ	03.02.07	740-2065	A
		CHECKED		TITLE		
		APPROVED		ASSY, SEAT, RECUMBENT, ST, RB		
VENDOR:		P/N:		SCALE: 1:1	SHEET 1 OF 1	SHEET SIZE: B
		U.O.M.				

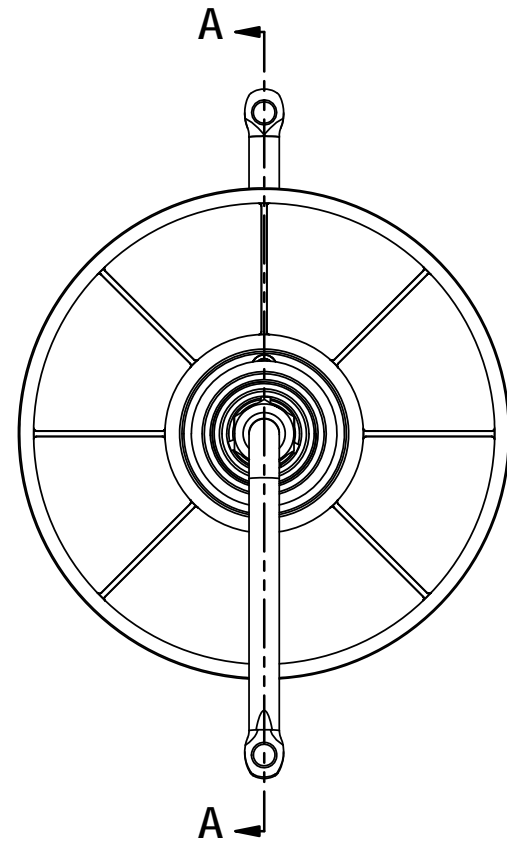
NOTES:

1. ONE PIECE CRANK ARM ASSEMBLY SEQUENCES:

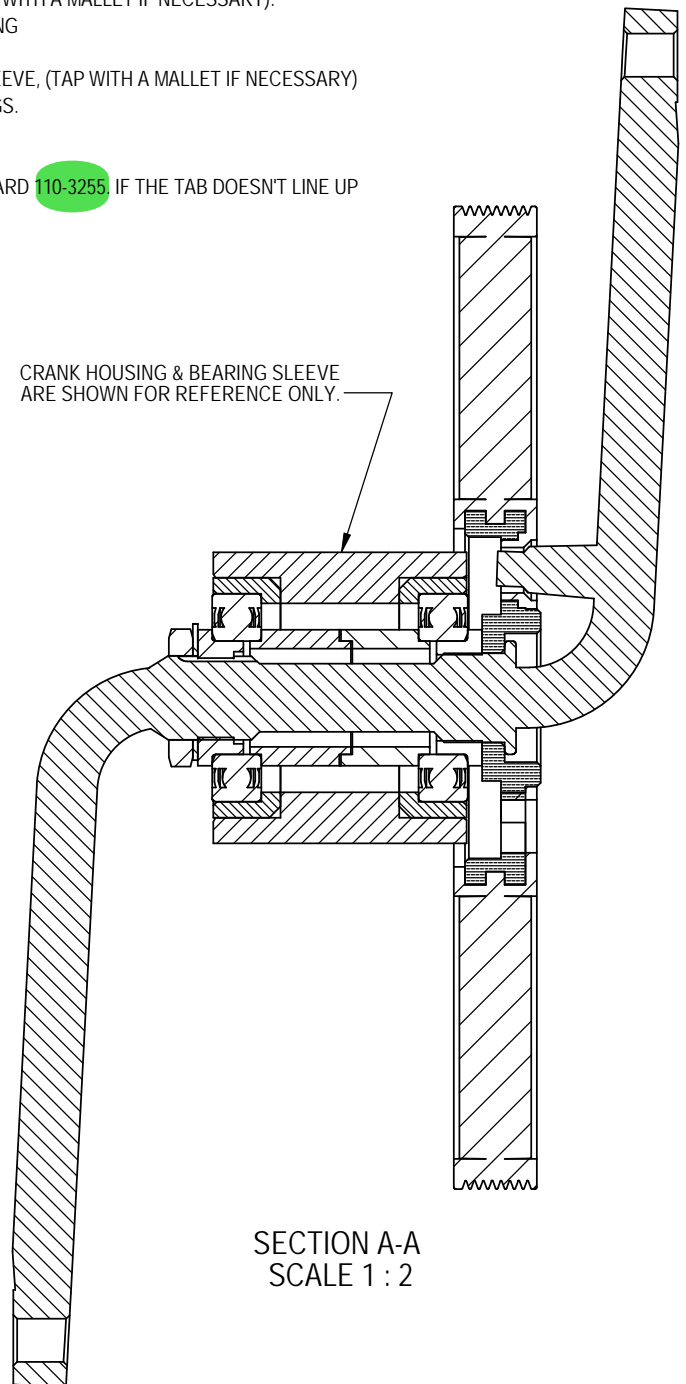
- A. ASSEMBLE THE CRANK AND THE PULLEY
- B. INSTALL & TIGHTEN P/N: 110-3254 ONTO PULLEY
- C. APPLY LOCTITE 680 RETAINING COMPOUND (OR ENGINEERING APPROVED EQUIVALENT) ON OUTER BEARING RACE & INNER BEARING SLEEVE WITHIN FRAME. FOLLOW LOCTITE INSTALLATION INSTRUCTION FOR PROPER PROCEDURE
- D. INSTALL BEARING INTO BEARING SLEEVE, (TAP WITH A MALLET IF NECESSARY)
- E. INSTALL & ROUTE THE CRANK THROUGH THE INNER BEARING RACE, (TAP WITH A MALLET IF NECESSARY).
- F. INSTALL TWO BEARING INSERTS WITH THE GROOVE FACING EACH BEARING
- G. REPEAT STEP "B" ONTO THE SECOND BEARING AND BEARING SLEEVE.
- H. INSTALL THE SECOND BEARING ONTO THE CRANK INTO THE BEARING SLEEVE, (TAP WITH A MALLET IF NECESSARY)
- I. INSTALL & TIGHTEN P/N: 110-3253 (7/8-24 LH NUT) TO LINE UP THE BEARINGS.
- J. INSTALL & ALIGN P/N: 720-0042 ONTO THE KEYWAY ON THE CRANK
- K. INSTALL & TIGHTEN P/N: 110-3255
- L. BEND ONE TAB OF 720-0042 TOWARD THE 110-3253 AND THE OTHER TOWARD 110-3255. IF THE TAB DOESNT LINE UP WITH THE 110-3253, THEN BEND BOTH TABS OUT TOWARD THE 110-3255.

REVISION HISTORY

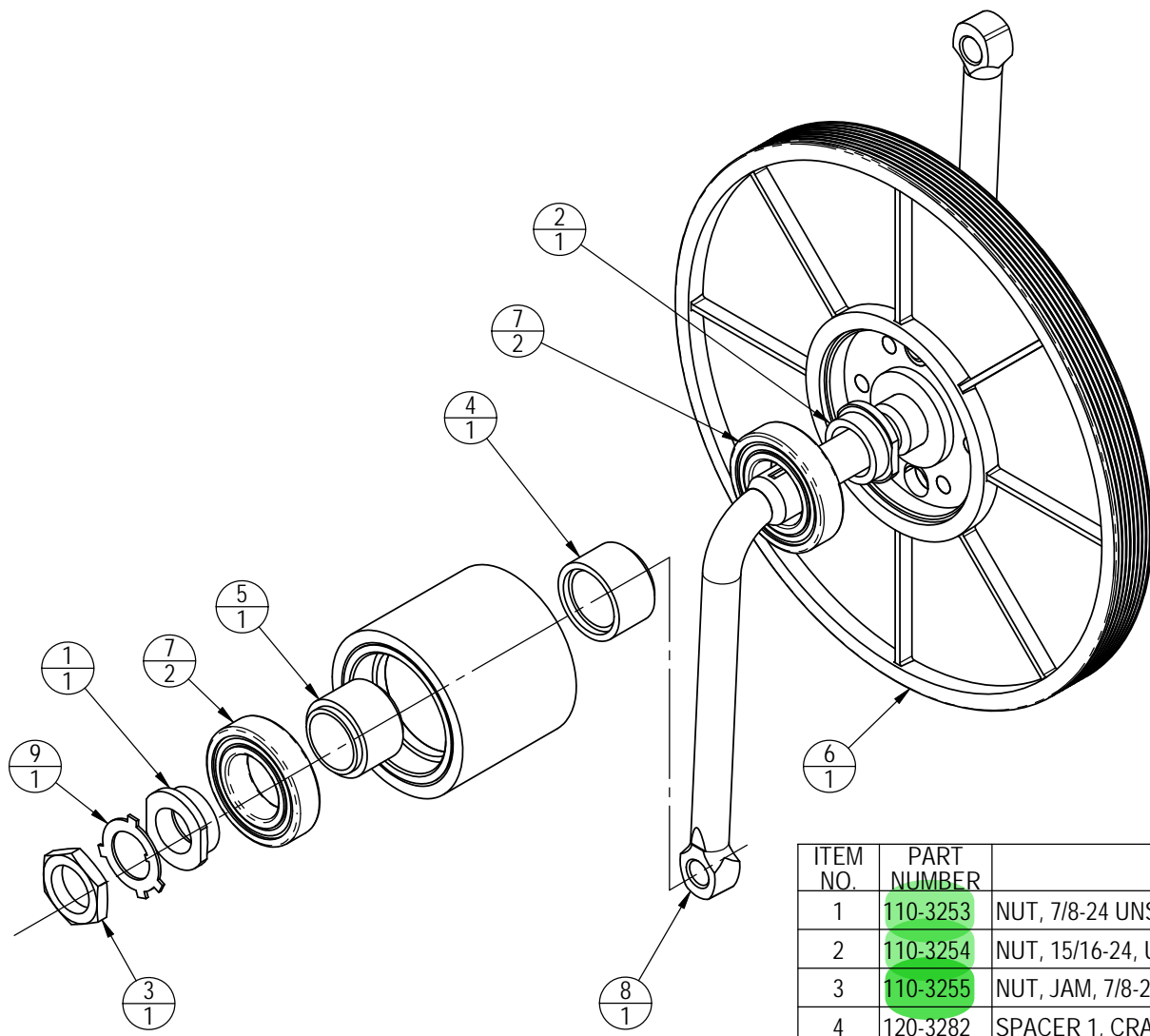
REV	DATE	DESCRIPTION	ECO	BY
A	12-10-03	PRODUCTION RELEASE.	11066	JD
B	05-18-05	REPLACE P/N: 120-3263 WITH P/N: 120-3282 & 120-3283. CHANGE QTY ON P/N: 020-6501 IS: 1, WAS: 2.	11263	OF
C	07-01-09	REMOVED P/N 020-6501 (2), 110-3247 (6), 110-3246 (6); UPDATE NOTES	12172	SCN



CRANK HOUSING & BEARING SLEEVE ARE SHOWN FOR REFERENCE ONLY.



SECTION A-A  
SCALE 1 : 2



ITEM NO.	PART NUMBER	DESCRIPTION	ASSY/QTY.
1	110-3253	NUT, 7/8-24 UNS, LEFT HAND THREAD	1
2	110-3254	NUT, 15/16-24, UNS, RIGHT HAND THREAD	1
3	110-3255	NUT, JAM, 7/8-24, UNS, LEFT HAND, THREAD	1
4	120-3282	SPACER 1, CRANK, UB/RB PRO	1
5	120-3283	SPACER 2, CRANK, UB/RB PRO	1
6	130-1701	PULLEY, 8J, 260MM	1
7	130-1707	BEARING, 30x55x13MM, 6006 2RS1	2
8	140-3249	CRANK, 6-1/2 X 24 THREAD	1
9	720-0042	WASHER, RETAINING, CRANK, UB/RB PRO	1

**DOCUMENT STATUS:  
RELEASE**

NOTICE OF PROPRIETARY INFORMATION  
THIS DOCUMENT SHALL NOT BE REPRODUCED NOR SHALL THE INFORMATION CONTAINED HEREIN BE USED BY OR DISCLOSED TO OTHER EXCEPT AS EXPRESSLY AUTHORIZED BY UNISEN INC, D.B.A. STAR TRAC.

CLASS OF WORK	UNLESS OTHERWISE SPECIFIED DIMS ARE IN mm. TOLERANCES FOR MEASURE OF LENGTH ARE:							ANGLES = ±2°
	0.5 to 3	> 3 to 6	> 6 to 30	> 30 to 120	> 120 to 400	> 400 to 1000	> 1000 to 2000	
FINE	±0.05	±0.05	±0.1	±0.15	±0.2	±0.3	±0.5	----
MEDIUM	±0.1	±0.1	±0.2	±0.3	±0.5	±0.8	±1.2	±2
COARSE	±0.2	±0.3	±0.5	±0.8	±1.2	±2	±3	±4
VERY COARSE	----	±0.5	±1	±1.5	±2.5	±4	±6	±8

<b>MATERIAL</b>	
<b>FINISH</b>	
VENDOR:	P/N:

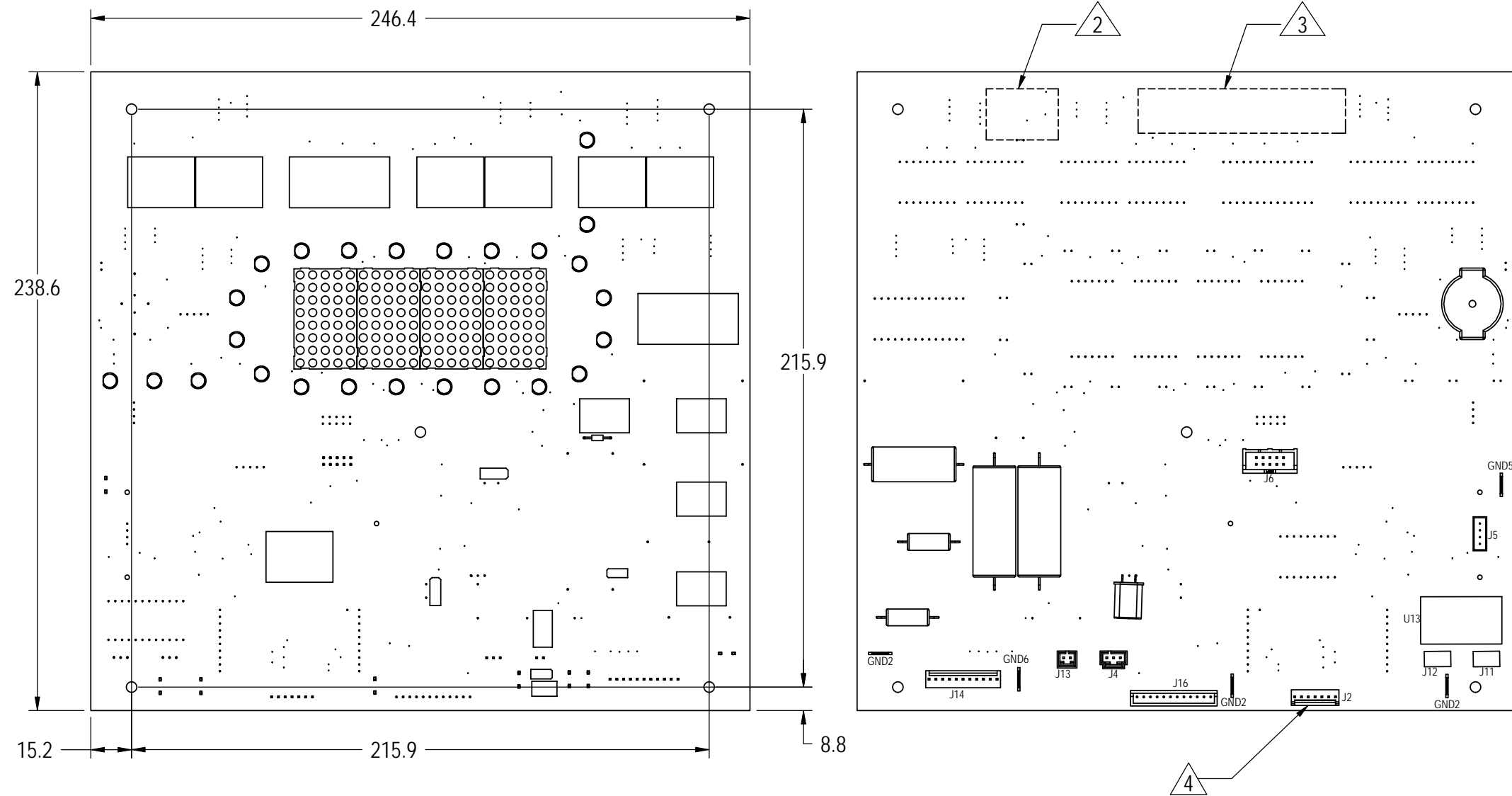
THIRD ANGLE PROJECTION	
DRAWN	INITIAL: FJM DATE: 01-15-03
CHECKED	
APPROVED	
U.O.M.	MM

<b>UNISEN, INC. DBA</b>		14410 Myford Road Irvine CA 92606	
		STARTRAC PART NO: <b>718-1103</b>	REV: C
TITLE: <b>ASSY, CRANK W/PULLEY</b>		SCALE: 1:1	SHEET 1 OF 1 SHEET SIZE: B



- NOTES:
- THIS DRAWING IS FOR REFERENCE ONLY.
  - MARK SOFTWARE P/N & REV. ON ASSEMBLY IN LOCATION SHOWN - SAME REV AS PRINT.
  - MARK SERIAL NUMBER ON ASSEMBLY IN LOCATION SHOWN.
  - REMOVE PIN 5 (J2) FOR KEYING.
  - PROGRAM BOARD USING THE LATEST SOFTWARE VERSION LISTED IN THE BOM.
  - FINISHED ASSEMBLY TO BE ELECTRICALLY INSULATED (conformal coated) TO PREVENT CONTAMINATION FROM WATER OR HUMIDITY.

REVISIONS				
REV.	DATE	DESCRIPTION	ECO	BY
A	10/3/2007	PRODUCTION RELEASE	11732	SJ
B	2/13/2008	UPDATE SOFTWARE VERSION	11814	AK
C	6/4/2008	CHG RESISTOR, WAS: 0Ω; IS: 100 KΩ.	11922	ME
D	06-22-11	UPDATED CONECTOR LIST TO DEPOPULATE J11, J12 & U13	13133	FJM



ITEM	ID	DESCRIPTION	QTY
1	621-0038-PRG	SOFTWARE, S-TBT & S-Bikes	0
2	GRD2	Ground	1
3	GRD3	Ground	1
4	GRD4	Ground	1
5	GRD5	Ground	1
6	GRD6	Ground	1
7	J02	CSAFE, 6 contacts	1
8	J04	TELEMETRY, 3 contacts	1
9	J05	Contact HR Interface, 4 contacts	1
10	J06	ISP, 10 contacts	1
11	J11	HR, LEFT, 3 contacts (Not populated)	0
12	J12	HR, RIGHT, 3 contacts (Not populated)	0
13	J13	FAN, 2 contacts	2
14	J14	Keyboard Interface, 11 contacts	1
15	J16	Main I/O, 12 contacts	1
16	U13	Contact HR Socket (Not populated)	0

**DOCUMENT STATUS:**

CLASS OF WORK	UNLESS OTHERWISE SPECIFIED DIMS ARE IN mm. TOLERANCES FOR MEASURE OF LENGTH ARE:							ANGLES = ±2°		
	0.5 to 3	> 3 to 6	> 6 to 30	> 30 to 120	> 120 to 400	> 400 to 1000	> 1000 to 2000	> 2000		
FINE	±0.05	±0.05	±0.1	±0.15	±0.2	±0.3	±0.5	----		
MEDIUM	±0.1	±0.1	±0.2	±0.3	±0.5	±0.8	±1.2	±2		
COARSE	±0.2	±0.3	±0.5	±0.8	±1.2	±2	±3	±4		
VERY COARSE	----	±0.5	±1	±1.5	±2.5	±4	±6	±8		

<b>MATERIAL</b>	
<b>FINISH</b>	
VENDOR: DCI	P/N: DGG9U

THIRD ANGLE PROJECTION	
DRAWN	INITIAL: SJ
CHECKED	DATE: 9/21/2007
APPROVED	
U.O.M.	MM

CORE INDUSTRIES, INC. DBA		14410 Myford Road Irvine CA 92606	
		STARTRAC PART NO	REV
		740-0001	D
TITLE: ASSY, DISPLAY BOARD, S-UB/RB, S-TBT			
SCALE: 1:2	SHEET 1 OF 1	SHEET SIZE: B	

NOTICE OF PROPRIETARY INFORMATION  
THIS DOCUMENT SHALL NOT BE REPRODUCED NOR SHALL THE INFORMATION CONTAINED HEREIN BE USED BY OR DISCLOSED TO OTHER EXCEPT AS EXPRESSLY AUTHORIZED BY CORE INDUSTRIES, INC., D.B.A. STAR TRAC.