

Table 3–5. Error Resolution

Error Code	Action
E204	Verify the cable connections at both ends. Check for bent or broken pins, and replace if required. If error persists, replace the VSD or controller as necessary.
E209	Replace the VSD.
E208	Replace the VSD.
E207	Replace the belt or deck if worn; otherwise, press CLEAR .
E203	<p>High Motor overload caused by one of the following:</p> <ol style="list-style-type: none"> 1 Runner heavier than weight / speed envelope in conjunction with significant deck wear. Solution: Restrict use to people within the weight/speed specifications, and check deck wear. Replace if necessary. 2 Motor lead disconnected or loose. Solution: Check the motor leads to ensure all leads are connected. One loose or disconnected lead will cause the overload. 3 Electrical failure on the drive electronics. Solution: Replace the VSD. 4 Motor blocked by obstruction. Solution: Remove the obstruction.
E210	Replace the VSD.
E212	Verify that the 3 jumpers are attached correctly on the VSD board. If problem persists, replace VSD board.
E211	Replace the VSD or grade motor.

VSD

Table 3–6A. LED Patterns for PC Boards P/N - 27920 & 27115.

LED	On	Off
DS1	Only when belt is running	When belt is stopped
DS2	Overload	Normal
DS3	Power to the console	No power to the console
DS4	Normal	VSD problem

Note: If the VSD detects an error, DS1 and DS2 will blink.

Table 3–6B. LED Patterns for PC Board P/N - 41387.

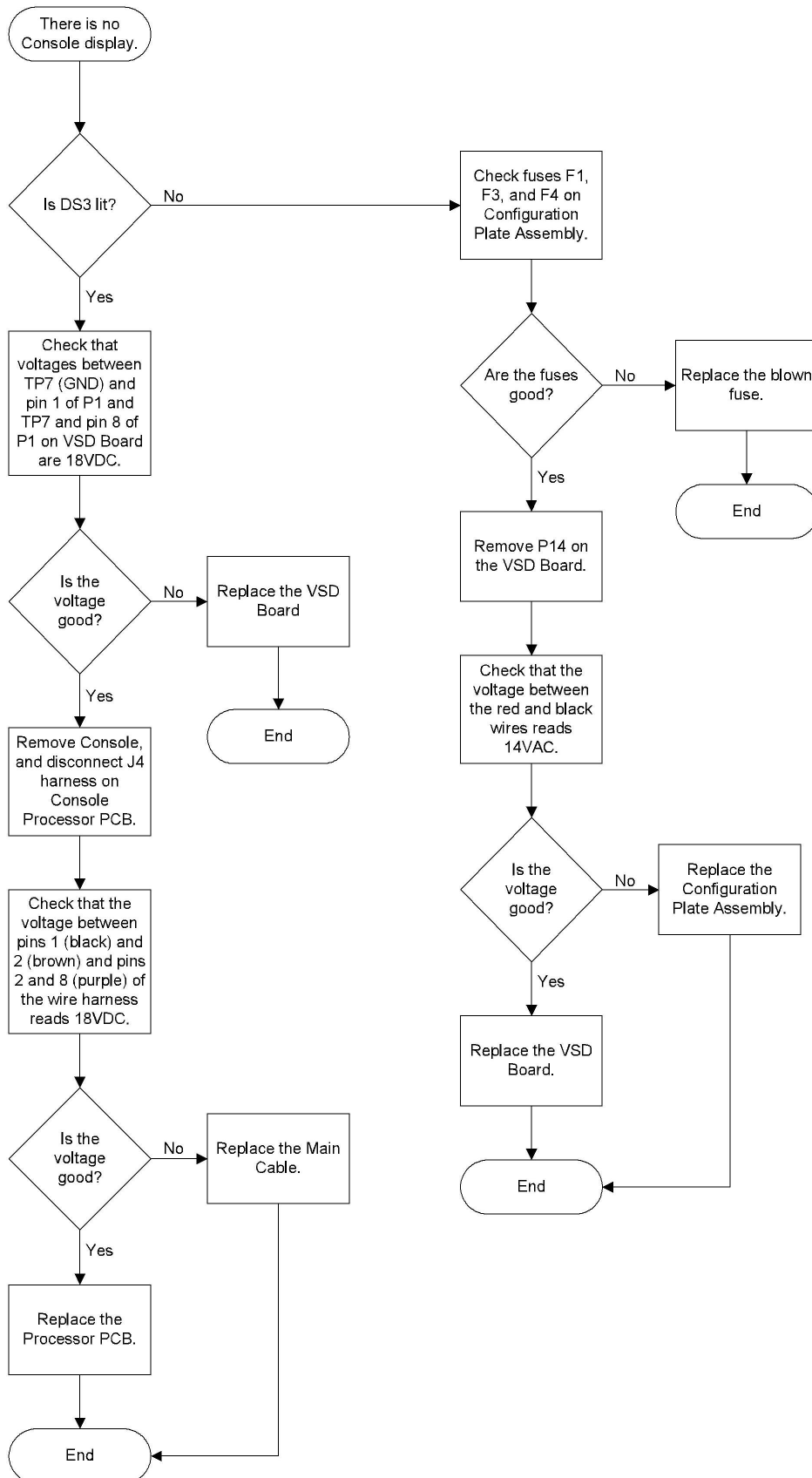
LED	On	Flashing	Off
DS1	Belt is running	*	Belt is stopped
DS2	Motor Overload	* or once per second for proper console communication	No console communication
DS3	Power to the console and Drive Processor	n/a	No power present
DS4	Power to Drive Motor Control Circuits	n/a	No power to P20 or VSD problem

* DS1 and DS2 flashing together indicates an error condition and shows automatic resets of the system.

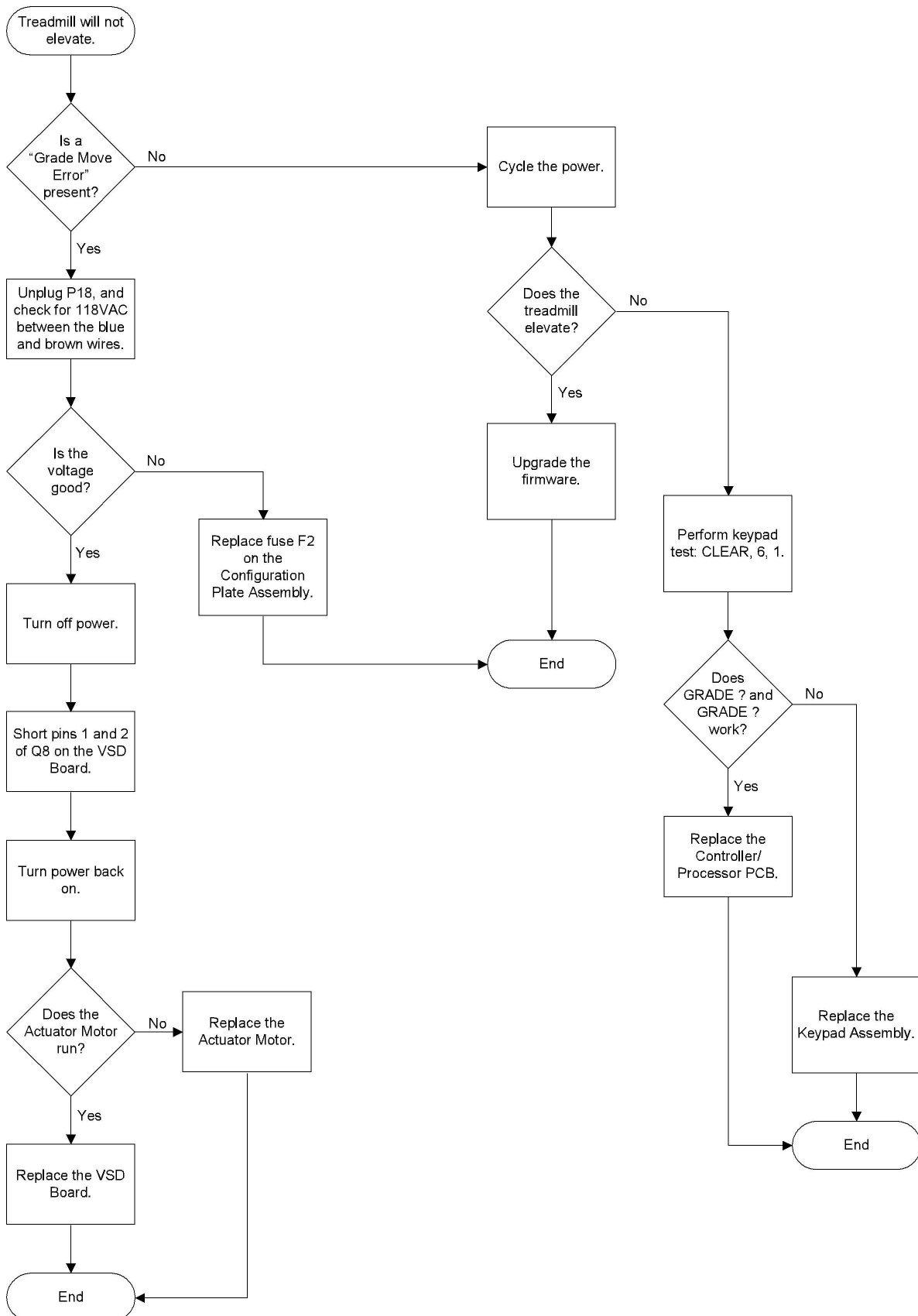
Troubleshooting Flowcharts

Use the flowcharts on the pages 36–40 to help you localize and correct electrical and electronic problems.

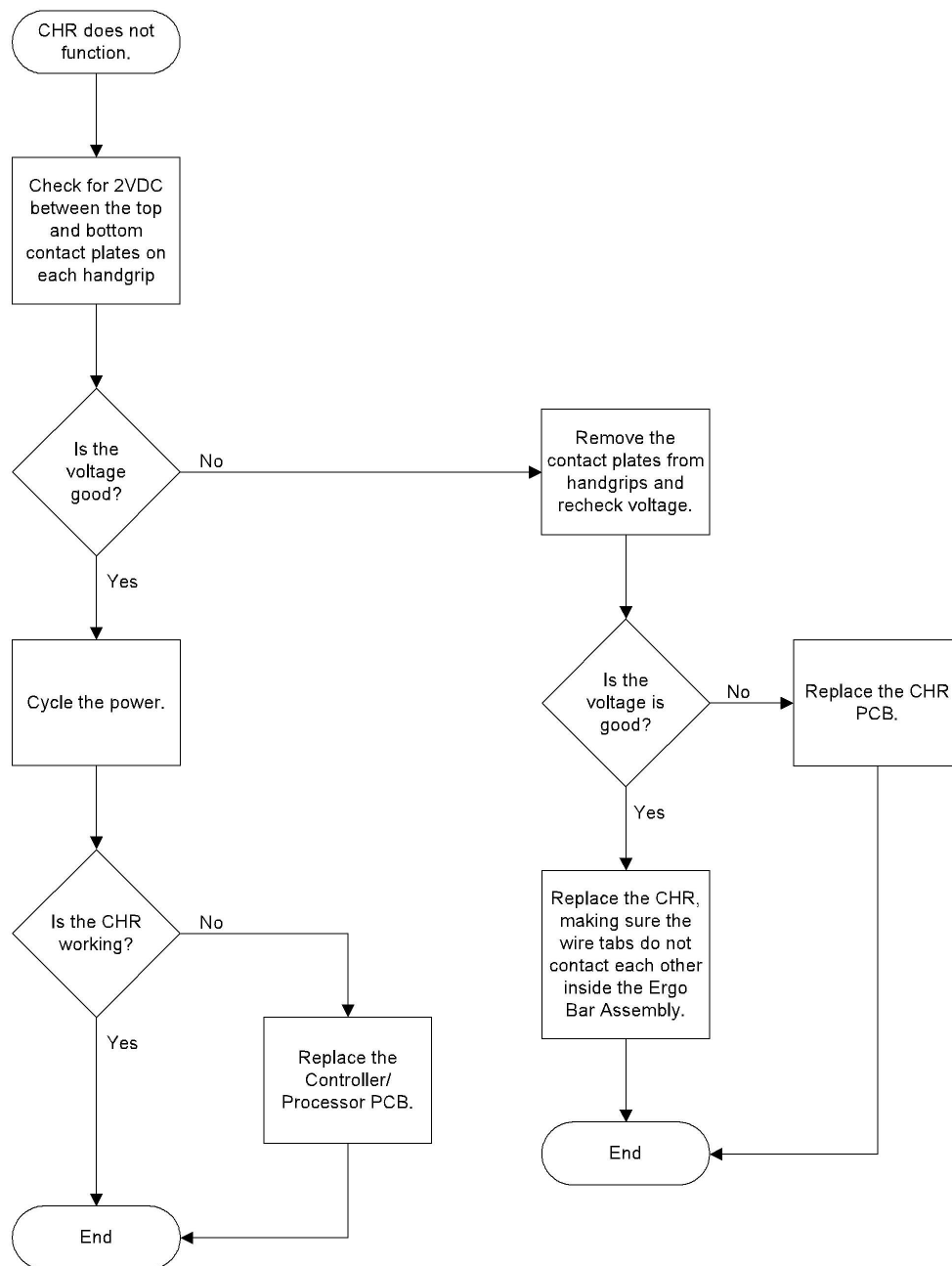
No Display



No Elevation Movement



Non-Functional CHR



Non-Functional Ergo Bar

