

Keypad Replacement

SM D1

This document explains the steps necessary for replacing the D1 console keypad with a serial number prior to D201223xxxx.

Tools required:

- Philips screw driver
- Razor or blade
- Acetone cleaner

Note: A drill must not be used at anytime for this repair.

Before starting to replace the keypad, the work area must be very clean. The keypad will not stick if there is dust on the adhesive.

1. First step is to remove console from the unit and lay the console on a flat surface.
2. Remove the screws from the back of the console (Fig. 1).



Fig. 1

3. Once the board is exposed, locate the ribbon **cable** connector and remove the ribbon from the board (Fig. 2). Take a picture of the back of the console for a reminder on how to put it back the wires when complete.

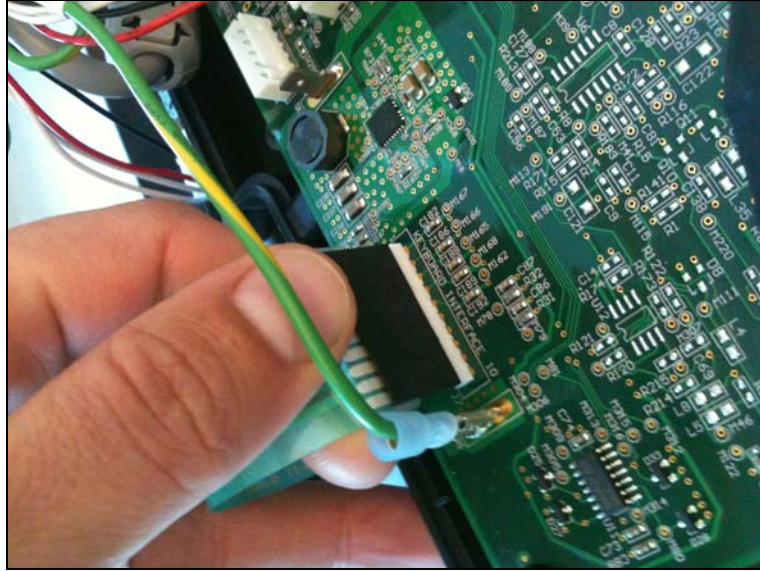


Fig. 2

4. Remove the button layer of the overlay by using a razor tip (Fig. 3)



Fig. 3

Part Replacement

5. After the button layer is removed, lift the circuit layer by using a razor tip (Fig. 4). Once the edge is peeled, remove the circuit layer (Fig. 5).

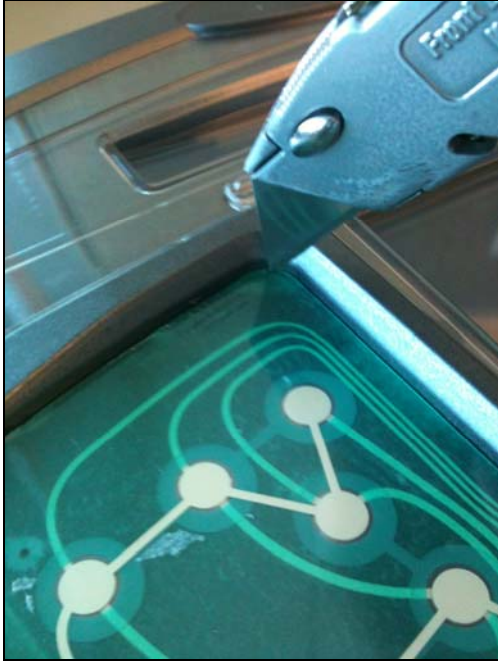


Fig. 4



Fig. 5

6. After the circuit is removed, there will be a sticky residue left behind on the shell.



Fig. 6

Using an acetone cleaner, remove the residue completely.

Note: Make sure it is not a rough pad of any kind to be used to remove the residue.

7. Insert the new overlay's ribbon **cable** through front of console (Fig. 7).



Fig. 7

8. Loosen the main board to allow ribbon **cable** threading through (Fig 8). Then pull the ribbon **cable** through the front of the console (Fig. 9)

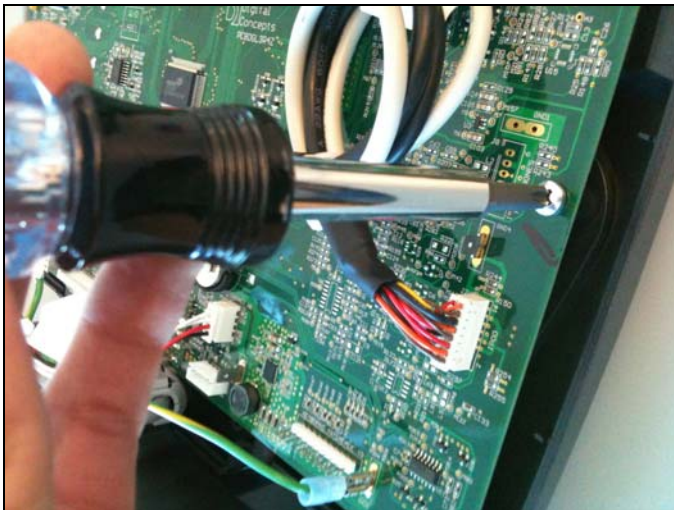


Fig. 8

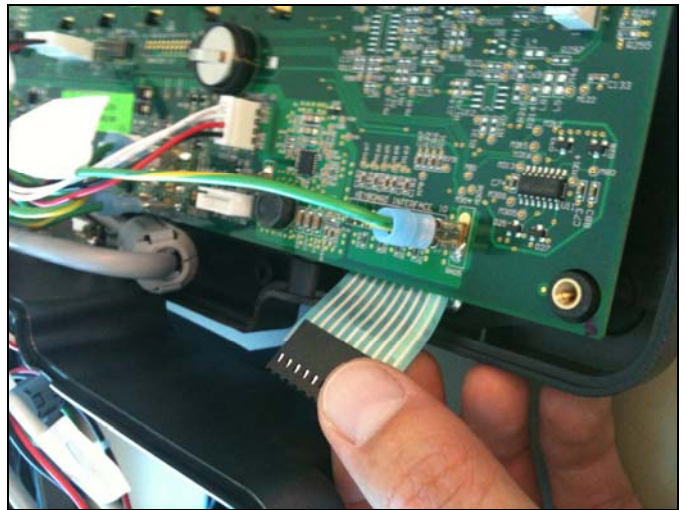


Fig. 9

9. Insert the ribbon **cable** into the harness (Fig. 10). Make sure to hear the snapping sound when connecting

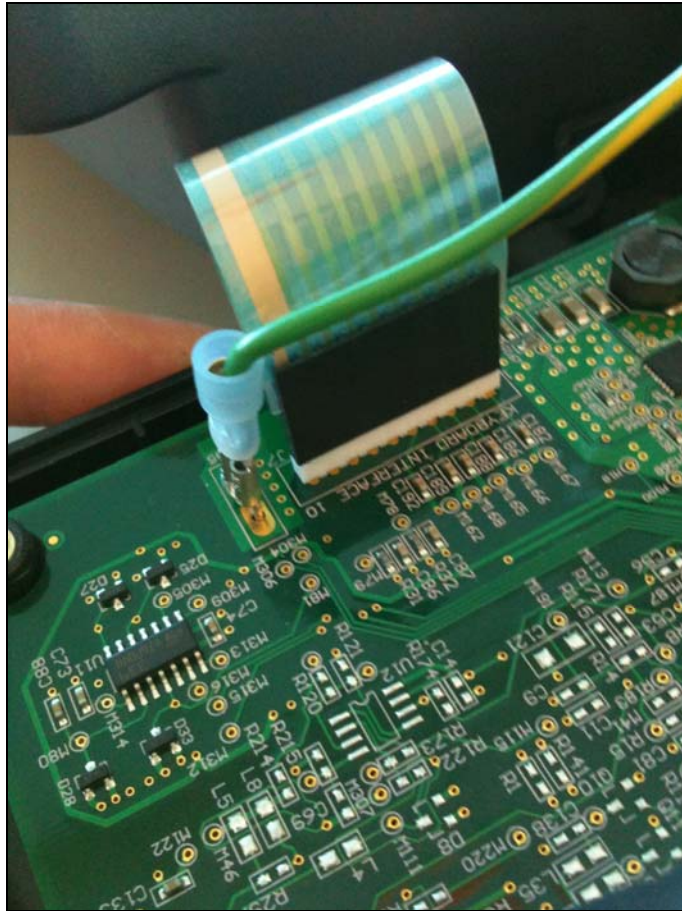


Fig. 10

10. Tighten the screw of the main board. Peel off the backing of the new overlay (Fig. 11)



Fig. 11

Align the overlay and press face to adhere to the surface of the console (Fig. 12 and 13).



Fig. 12



Fig. 13

11. Keypad is installed (Fig. 14). Assemble console back to its original form and test the keypads.



Fig. 14