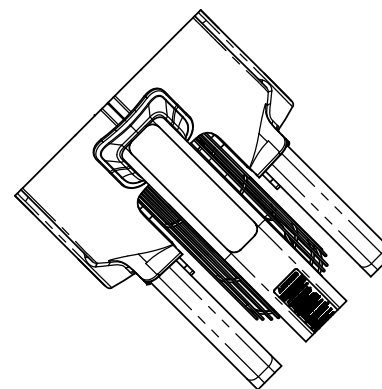
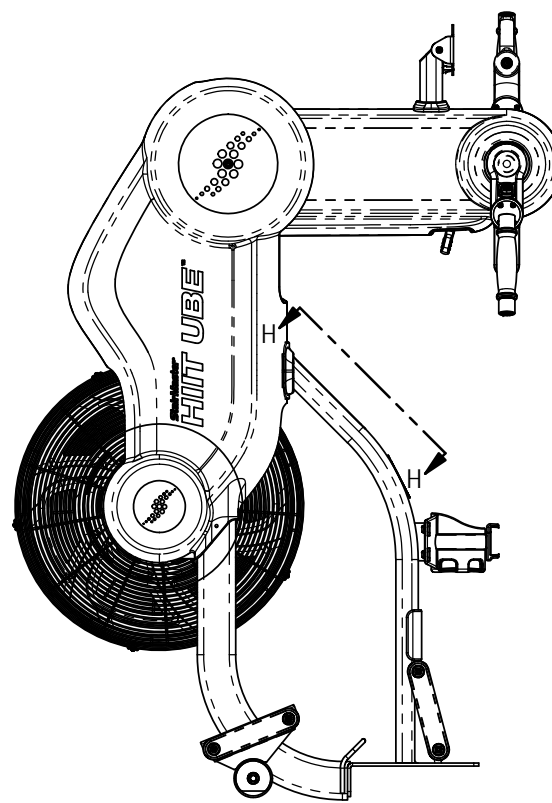
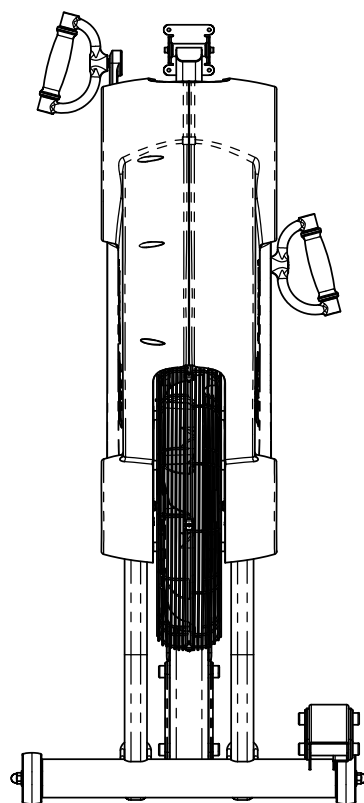


NOTES:

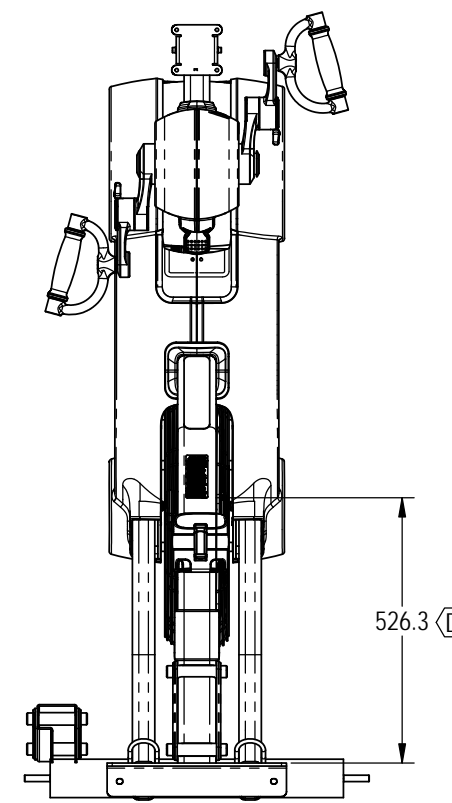
1. CLEAN MATING SURFACE WITH DENATURED/ISOPROPYL ALCOHOL PRIOR TO ADHERING DECAL OR LOGO
2. APPLY LOCTITE 243 ON THREADS
3. TORQUE TO 11.3 Nm / 100 lb-in
4. TORQUE TO 45-50 Nm / 33-37 lb-ft
5. TORQUE TO 63 Nm / 46.5 lb-ft
6. TORQUE TO 30 Nm / 266 lb-in
7. TORQUE TO 5.5Nm / 48.5 lb-in, THEN TIGHTEN SET SCREW
8. TENSION BELT TO 150-160Hz
9. TENSION BELT TO 95-105Hz

REVISION HISTORY

REV	DATE	DESCRIPTION	ECO	BY
A	10/29/2015	Production Release	14962	SCN
B	7/20/2016	ADD 718-5634 (1) PART NUMBER WAS 720-5209, IS 720-5209-XX PART NUMBER WAS 720-5210, IS 720-5210-XX REVISE NOTE 8 & FINISH BLOCK UPDATE TORQUE SPECS NOTE 3 & 7	15459	KD
C	8/25/2017	IS: 720-5235-XX (1) WAS: 720-5209-XX (1), IS: 720-5236-XX (1) WAS: 720-5210-XX (1), IS: 718-5731 (1) WAS: 718-5629 (1), ADD: 718-5629 (1), 720-5239 (1), 731-6659 (1), 731-0355 (2), 731-5725 (2), 731-0169 (2)	15755	AW
D	10/13/2017	MODIFY CUP HOLDER ATTACHMENT IS: 526.3, WAS: 308.8	15824	AW



SECTION H-H
SCALE 1 : 10



DOCUMENT STATUS:

NOTICE OF PROPRIETARY INFORMATION
THIS DOCUMENT SHALL NOT BE REPRODUCED NOR SHALL THE INFORMATION CONTAINED HEREIN BE USED BY OR DISCLOSED TO OTHER EXCEPT AS EXPRESSLY AUTHORIZED BY CORE HEALTH & FITNESS, LLC.

CLASS OF WORK	UNLESS OTHERWISE SPECIFIED DIMS ARE IN mm. TOLERANCES FOR MEASURE OF LENGTH ARE:							ANGLES = ±2°		
	0.5 to 3	> 3 to 6	> 6 to 30	> 30 to 120	> 120 to 400	> 400 to 1000	> 1000 to 2000	> 2000		
FINE	±0.05	±0.05	±0.1	±0.15	±0.2	±0.3	±0.5	----		
MEDIUM	±0.1	±0.1	±0.2	±0.3	±0.5	±0.8	±1.2	±2		
COARSE	±0.2	±0.3	±0.5	±0.8	±1.2	±2	±3	±4		
VERY COARSE	----	±0.5	±1	±1.5	±2.5	±4	±6	±8		

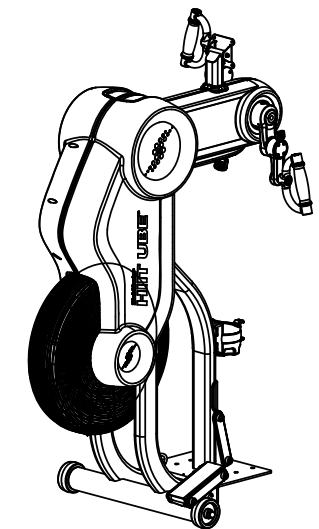
MATERIAL SEE BOM	
FINISH COLOR PER -XX DESIGNATED IN PARENT SKU, -XX COLOR PER SOP 622-200-112	
VENDOR: N/A	P/N: N/A

THIRD ANGLE PROJECTION		
DRAWN	INITIAL SCN	DATE 4/20/2015
CHECKED		
APPROVED		
	U.O.M.	MM

CORE HEALTH & FITNESS, LLC 4400 NE 77th Ave., Suite 300 Vancouver, WA 98662		
CORE PART NO 720-5124-XX	REV D	
TITLE Assy, Base, Main, Ergo		
SCALE: 1:15	SHEET 1 OF 6	SHEET SIZE: B

ITEM NO.	PART NUMBER	DESCRIPTION	QTY.
1	050-2215	LABEL, GENERAL WARNING, E-BTS	1
2	050-5455	Decal, Instruction, UBE	1
3	110-3172	Screw, M6x1.0, 16mm, FHM, HK, AS, NKL, Gr-10.9	8
4	110-3402	SCREW, #8-18, 3/4", HI-LOW, PHT, PH, CS, BO	13
5	110-3469	SCREW,M6x1.0,10mm,SHC,HK,AS,Grd-12.9,NKL,NP	6
6	110-3524	NUT, ACORN, 1/2"-13	2
7	110-3638	SCREW, #8-18, 1.25", HI-LOW, PHT, PH, CS, BO	3
8	110-3649	Nut, Lock, Spanner, Ø27xM16x1.0LHx3.5mm	2
9	110-3650	Nut, Lock, Spanner, Ø42xM18x1.0x3.5mm	2
10	110-3652	Screw, Set, M4x0.7, 3mm, CP, HK, AS, BO	2
11	110-3653	Screw, M8x1.25, 16mm, HCS, HE, CS, NKL, Gr-10.9	6
12	110-3667	Screw, Shoulder, Ø8mm x 25mm, SHC, HK, AS	1
13	110-3668	Screw, Shoulder, Ø8mm x 35mm, SHC, HK, AS	1
14	110-3671	NUT, "U", BARREL, TAPERED, M5x0.8mm	2
15	120-3325	WASHER, FLAT, ID 8.23MM, OD 19.68MM, 2.75THK	1
16	120-3340	SPACER, KEY 5mm, Ø17mm X Ø32mm X 4mm	1
17	120-3351	SPACER, FLAT, ID 8.23MM, OD 16MM, THK 2.5MM	1
18	120-3359	Washer, Ø19mm X Ø34mm X 3mm, Steel, ZP	1
19	120-3370	Spacer, Ø25 x Ø35 x 4.2mm, CS, NKL	2
20	130-1694	WHEEL, 4.0" OD X 0.5" BORE	2
21	130-1838	BELT, 6PK1035, POLY-V	1
22	130-1847	Bearing, Flange, Units, 3-Bolt, Ø25mm	2
23	130-1849	BELT, 6J497, POLY-V	1
24	130-1865	Assy, Key, Split, 6 x 6 x 15mm	2
25	140-3490	GROMMET, OD: .44", ID: .25", TH: .25", PU	1
26	140-3510	RETAINING RING, Ø18mm, EXT	1
27	140-3542	KEY, PARALLEL, 5mm X 5mm X 10mm	1
28	140-3594	Clamp, Wire, Ø3mm, Closing, Self	3
29	718-5466-XX	ASSY, FAN, TURBO	1
30	718-5562	CABLE, SENSOR, DISPLAY, AIR BIKE	1
31	718-5573	Spacer, Hub, Crank, Ergo	2
32	718-5634	Assy, Guard, Tube, Seat, Airfit UB	1
33	720-5105	Assy, Head, Upper, ERGO	1
34	720-5108	Assy, Idler, Trans, Frame, Ergo	1
35	720-5120-XX	Shroud, Boom, Right, Ergo	1
36	720-5121-XX	Shroud, Boom, Left, Ergo	1
37	720-5122-XX	Weldment, Stand, Frame, Ergo	1
38	720-5123-XX	Grommet, Adjust, Boom, Ergo	1

ITEM NO.	PART NUMBER	DESCRIPTION	QTY.
39	720-5125	Grommet, Tube, Frame, Ergo	1
40	720-5133	Assy, Pivot, Tension, Trans, Fan, Ergo	1
41	720-5134-XX	Assy, Grill, Fan, Ergo	1
42	720-5138-XX	Shroud, Inner, Left, Ergo	1
43	720-5139-XX	Shroud, Inner, Right, Ergo	1
44	720-5145-XX	Arm, Adjust, Crank, ERGO	1
45	720-5172-XX	Arm, Adjust, Crank, Ctr, Fixed, Ergo	1
46	720-5179	Plastic, Guide, Mount, Seat, Ergo	4
47	720-5180	Mount, Front, Shroud, Ergo	1
48	720-5184	Assy, w/ Lever, Shock, 510, Ergo	1
49	720-5192-XX	Assy, Grip, Hand, Ergo	2
50	720-5200-XX	Assy, Swivel, Display, Mount, Ergo	1
51	720-5212	Assy, Pulley, Trans, Ergo	1
52	720-5213	Plate, Adapter, Mount, Sensor, Timing	1
53	720-5215	Assy, Mount, Side, Rt, Shroud, Ergo	1
54	720-5216	Assy, Mount, Side, Lt, Shroud, Ergo	1
55	731-0254	WASHER,8.0 ID,13.5 OD,1.5 THK	6
56	731-0353	SCREW,M5X0.8,12mm,BHC,HK	21
57	731-0364	SCREW, M8X1.25, 45mm, BHC, HK	1
58	731-0373	WASHER,PLAIN,M6	6
59	731-1071	RETAINING RING,EXT., 25MM SHAFT	2
60	731-1363	NUT, M6X1.0, NYLOC	2
61	731-5492	Washer, M6, Ø6.6xØ12x1.6mm, CS, NKL	6
62	740-7183	Screw, M5x0.8, 16mm, BHC, HK, SS	2
63	740-7190	NUT, M12X1.25, FLANGE, HE, CS, BO	1
64	740-7303	Nut, Rivet, Hex, M5X0.8	9
65	740-7404	Screw, M6x1.0, 12mm, SHC, HK, SS	6
66	740-8145	BOLT, CRANKARM, M8	2
67	718-5731	CABLE, CONSOLE TO RPM/POWER, HIIT BIKE/UBE	1
68	720-5236-XX	Shroud, HIIT UBE, Brand, Rt	1
69	720-5235-XX	Shroud, HIIT UBE, Brand, Lt	1
70	720-5234	BRACKET, PLASTIC, CIRCULAR, ERGO	2
71	720-5239	MOUNT,BOTTLE HOLDER,HIIT UBE	1
72	731-6659	ASSY,WATER/PHONE,HOLDER	1
73	731-0355	WASHER,PLAIN,M8,NARROW	2
74	731-5725	RIVET NUT, HEX HEAD,M8	2
75	731-0169	SCREW,M8x1.25,20mm,BHC,HK,AS,NKL,Grd-12.9	2
76	718-5788	GROMMET, 14MM, 2 CABLE, HIIT BIKE	1

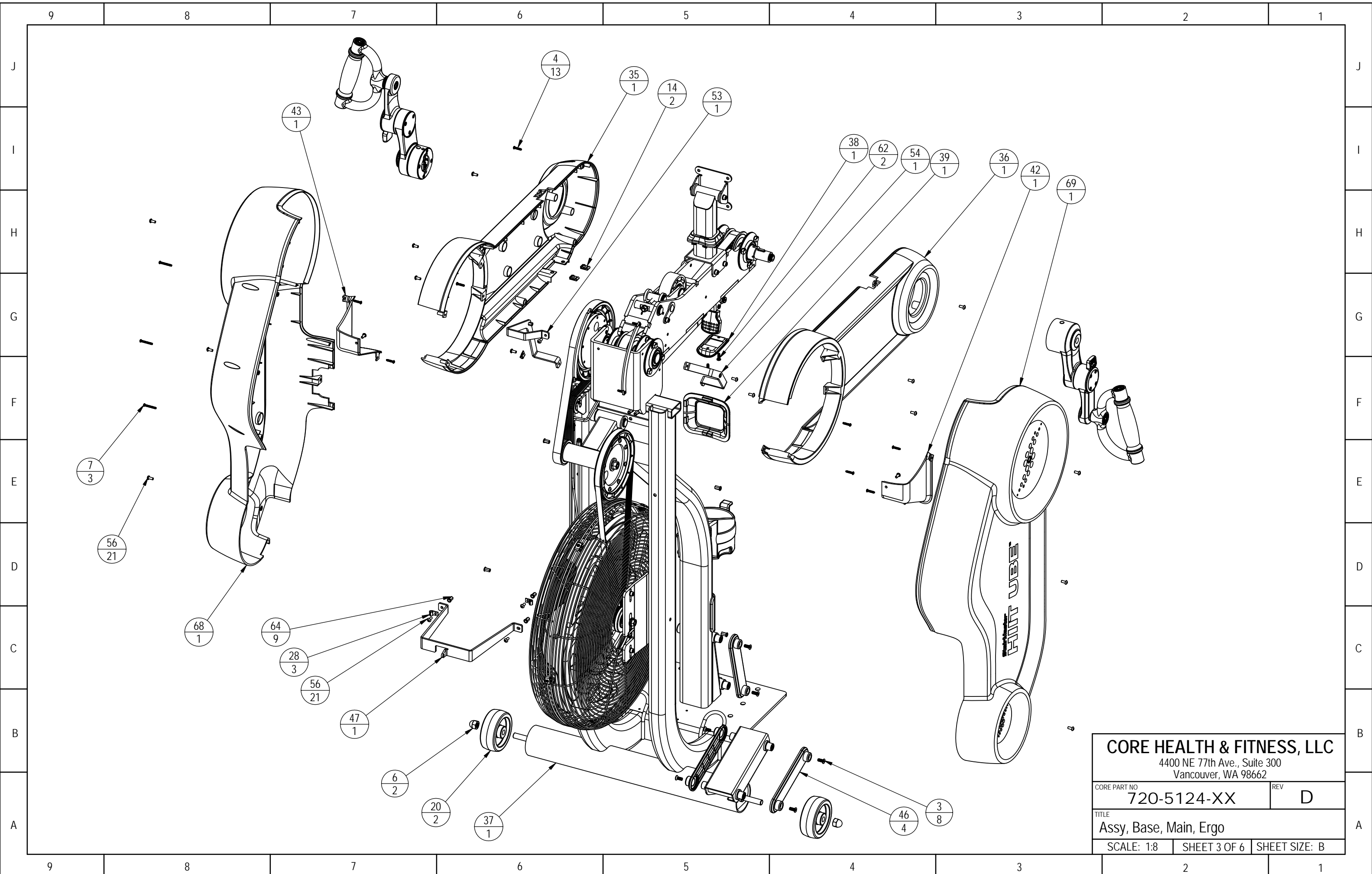


CORE HEALTH & FITNESS, LLC
 4400 NE 77th Ave., Suite 300
 Vancouver, WA 98662

CORE PART NO: **720-5124-XX** REV: **D**

TITLE: **Assy, Base, Main, Ergo**

SCALE: 1:25 SHEET 2 OF 6 SHEET SIZE: B

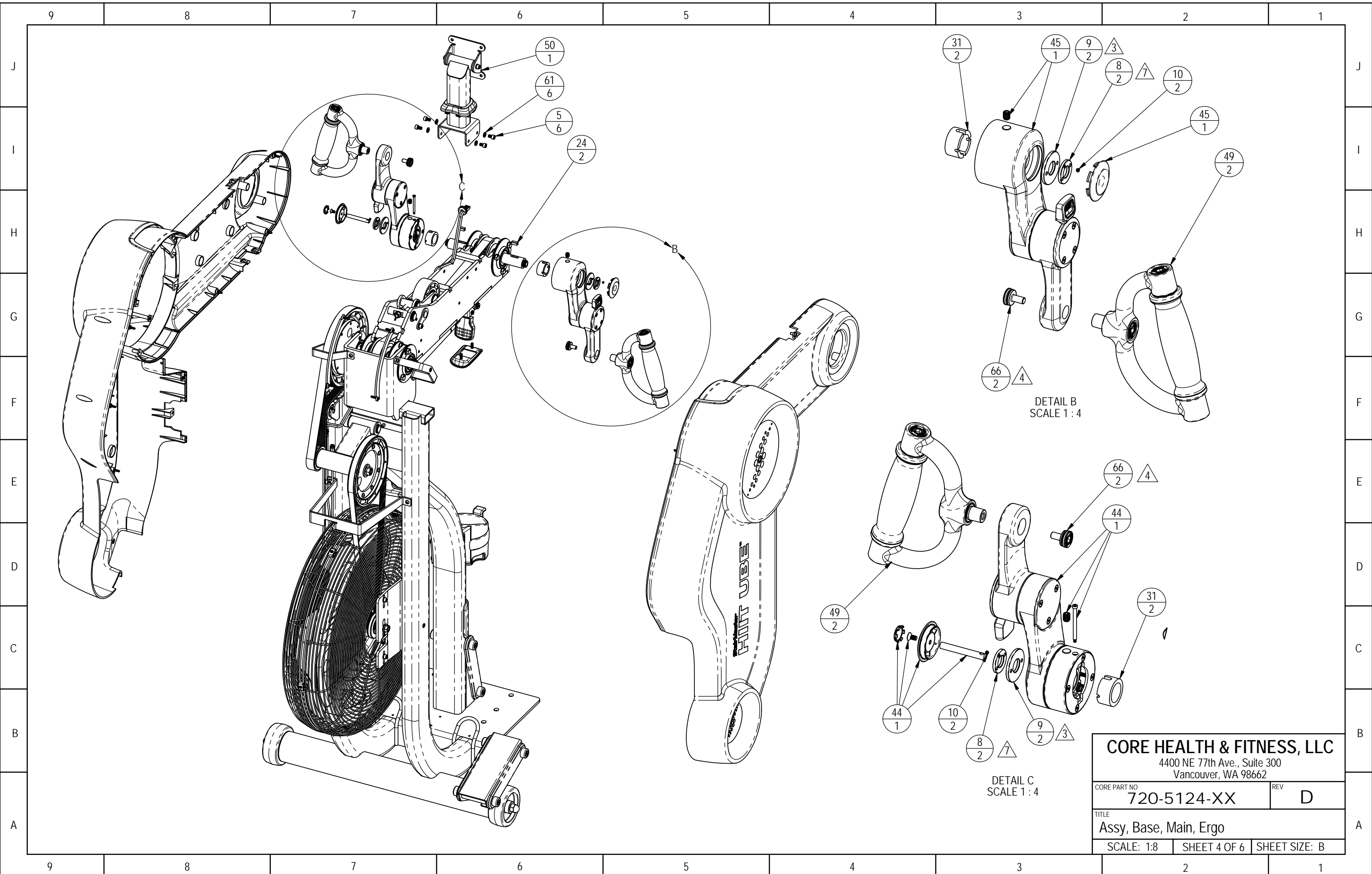


CORE HEALTH & FITNESS, LLC
 4400 NE 77th Ave., Suite 300
 Vancouver, WA 98662

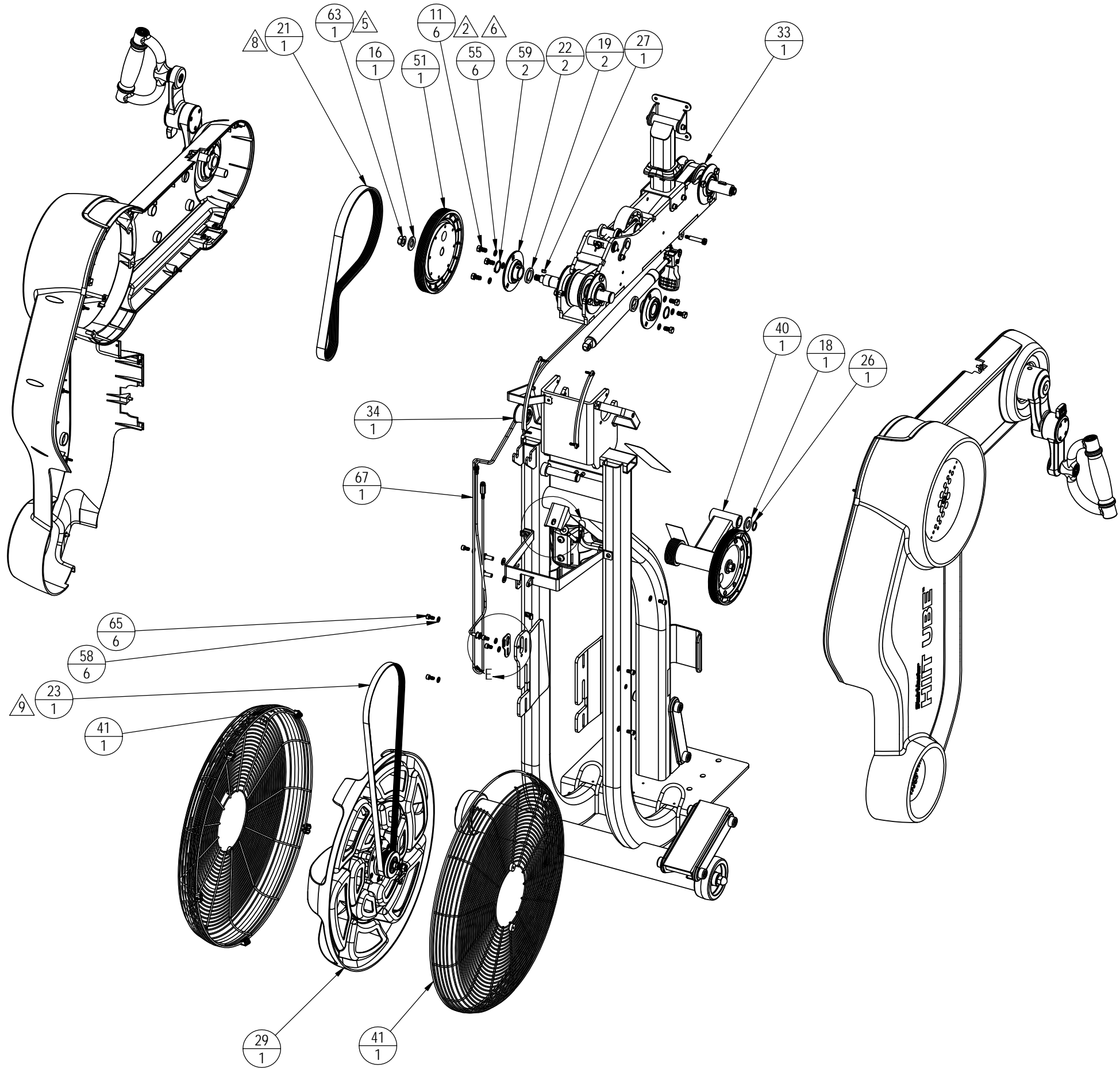
CORE PART NO	REV
720-5124-XX	D

TITLE
Assy, Base, Main, Ergo

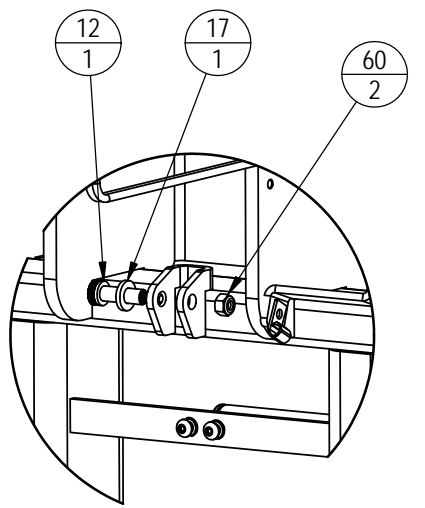
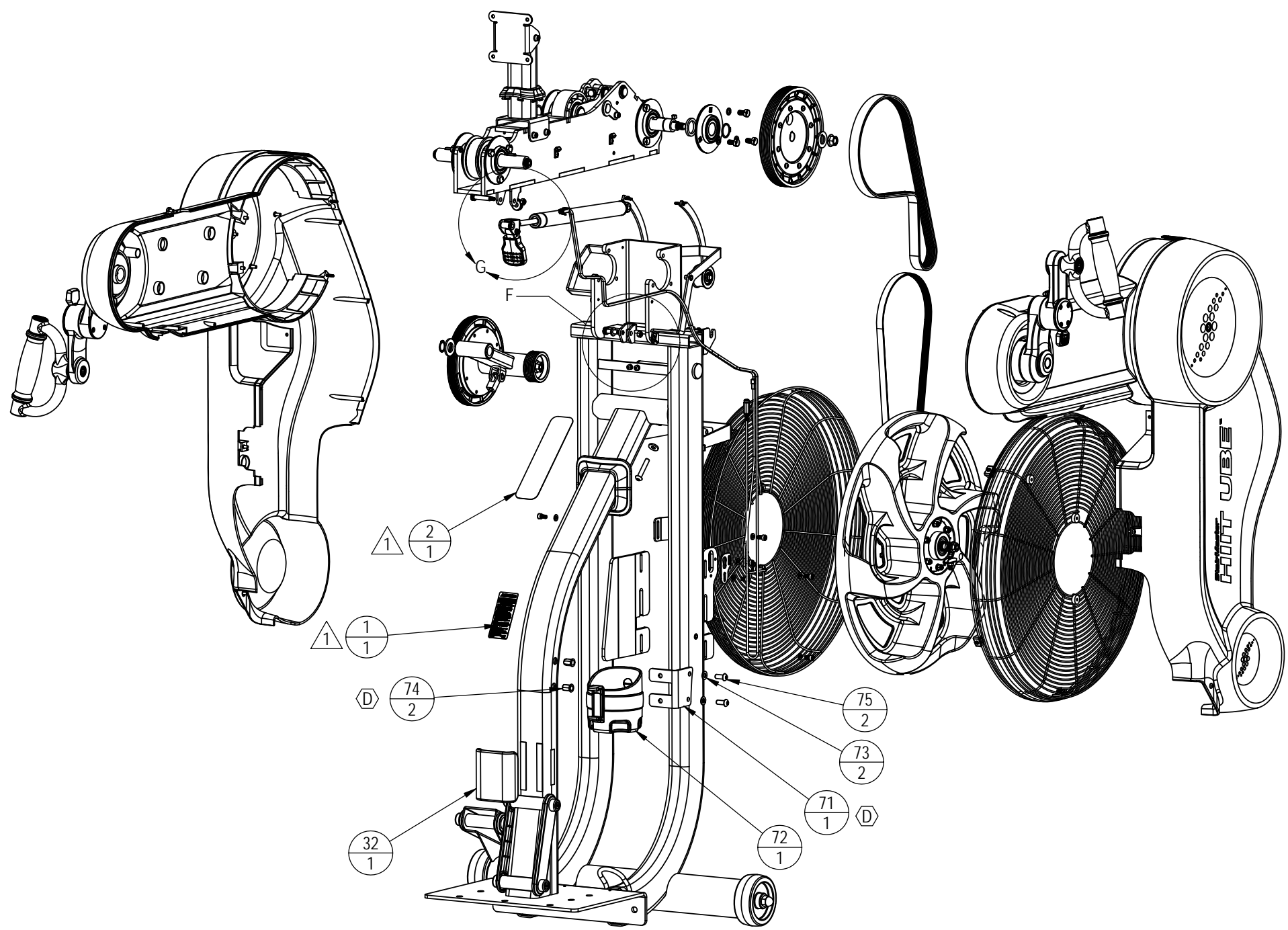
SCALE: 1:8	SHEET 3 OF 6	SHEET SIZE: B
------------	--------------	---------------



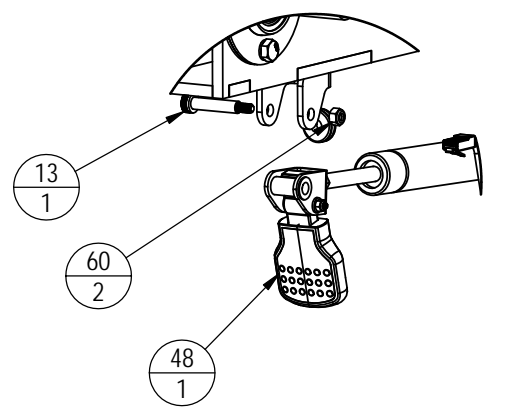
CORE HEALTH & FITNESS, LLC		
4400 NE 77th Ave., Suite 300 Vancouver, WA 98662		
CORE PART NO	720-5124-XX	REV D
TITLE Assy, Base, Main, Ergo		
SCALE: 1:8	SHEET 4 OF 6	SHEET SIZE: B



CORE HEALTH & FITNESS, LLC		
4400 NE 77th Ave., Suite 300 Vancouver, WA 98662		
CORE PART NO	720-5124-XX	REV D
TITLE Assy, Base, Main, Ergo		
SCALE: 1:10	SHEET 5 OF 6	SHEET SIZE: B



DETAIL F
SCALE 1:4



DETAIL G
SCALE 1:5

CORE HEALTH & FITNESS, LLC
 4400 NE 77th Ave., Suite 300
 Vancouver, WA 98662

CORE PART NO		REV
720-5124-XX		D
TITLE		
Assy, Base, Main, Ergo		
SCALE: 1:10	SHEET 6 OF 6	SHEET SIZE: B