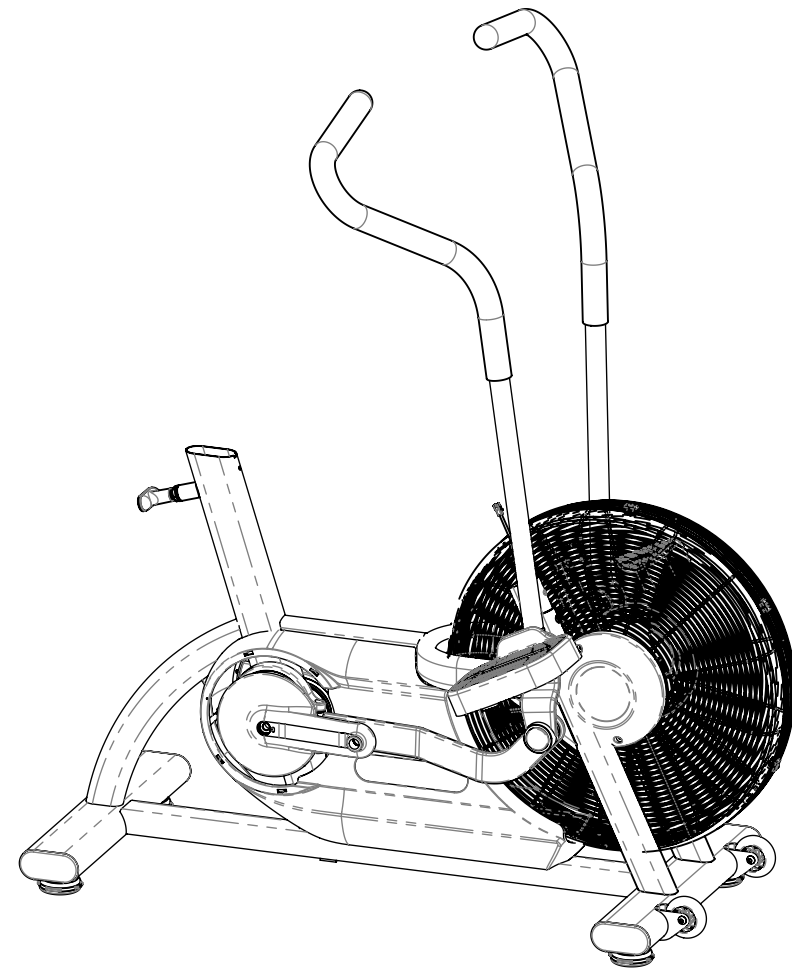


NOTES:
1. COLOR IS SPECIFIED IN FINAL SKU; COLOR DESIGNATION PER-XX SPECIFIED IN SOP 620-200-112

REVISION HISTORY				
REV	DATE	DESCRIPTION	ECO	BY
A	9/10/2015	PRODUCTION RELEASE	14981	SCN



ITEM NO.	PART NUMBER	DESCRIPTION	QTY.	NOTES
1	140-3566	Screw, M8x1.25, 20mm, SHC, HK, AS, NP, EC-B, Gr-12.9	2	REF
2	110-3600	Screw, M6x1, 12mm, SHFC, HK, AS, NKL, Gr-12.9	4	
3	110-3601	PIN, 10MM OD X 75MM, M6 BOTH ENDS	2	
4	110-3604	SCREW, 4.2M, 19mm, PHTF, PH, CS, ZP	1	
5	110-3605	SCREW, M4.2, 38mm, PHT, PH, CS, ZP	5	
6	140-3653	Screw, M8x1.25, 16mm, HCS, HE, CS, NKL, Gr-10.9	4	REF
7	110-3706	Nut, Nyloc, M12x1.5, CS, ZP, Gr-10	1	
8	110-3709	Screw, M5x0.8, 10mm, PHM, PH, CS, NKL	4	
9	120-3247	WASHER, ISO7089, M12	1	
10	120-3353	Washer, Belleville, Ø0.3 x Ø25 x 3mm	2	REF
11	120-3405	Washer, Wave, Ø0.393" x Ø0.5" x 0.007"THK	2	
12	130-1812	BELT, 6PK910, POLY-V	1	
13	130-1814	BELT, 6J460, POLY-V	1	
14	140-3490	GROMMET, OD: .44", ID: .25", TH: .25", PU	1	
15	140-3554	Retaining, Round Wire, 50 OD X 2.5	4	
16	140-3613	Key, Parallel, 6mm X 6mm X 12mm	2	
17	718-5277	NUT, AXLE, B/B, E-/S- BIKE, GEN 2	3	
18	718-5378	ASSY, BOTTOM BACKET, TURBO	1	
19	718-5382-XX	ASS, CRANK ARM, RIGHT, TURBO	1	
20	718-5383-XX	Assy, Crank Arm, Left, AirBike	1	
21	718-5387	ASSY, TENSIONER, MAIN, AirBike	1	
22	718-5431	BB spacer	1	
23	718-5448-XX	COVER, AXEL, FAN, TURBO	2	
24	718-5466-XX	ASSY, FAN, TURBO	1	
25	718-5478	PLATE, FOOT SUPPORT, AIR BIKE	2	REF
26	718-5479	SUPPORT, FOOT, TURBO	2	REF
27	718-5485-XX	SHROUD, RIGHT, TURBO TRAINER	1	
28	718-5486-XX	SHROUD, LEFT, TURBO TRAINER	1	

ITEM NO.	PART NUMBER	DESCRIPTION	QTY.	NOTES
29	718-5560-XX	HANDLEBAR, UB, RIGHT, AIR BIKE	1	
30	718-5561-XX	ASSY, HANDLEBAR, UB, LEFT, AIR BIKE	1	
31	718-5562	CABLE, SENSOR, DISPLAY, AIR BIKE	1	
32	718-5566-XX	LINK, UPPER BODY, RIGHT, AIR BIKE	1	
33	718-5567-XX	LINK, UPPER BODY, LEFT, AIR BIKE	1	
34	718-5611-XX	WELDMENT, FRAME, G2, AIRFIT	1	
35	718-5612	Shaft, Trans, Airfit, Gen2	1	
36	718-5614	PULLEY, K6, POLY-V, Ø60mm X Ø25mm	1	
37	718-5615	Spacer, Trans, Airfit, Gen2	1	
38	718-5619	Spacer, Trans, Airfit, Gen2	1	
39	718-5623	ASSY, POP PIN, AIRFIT	1	
40	718-5627-XX	Foot, Adjustable, Plastic	4	
41	718-5638-XX	Assembly, Grill, Fan, Airfit, Gen2	1	
42	718-5639	Assy, Pulley, Trans, Airfit, Gen2	1	
43	730-0899	Screw, M6x1.0, 12mm, PHM, PH, SS	1	
44	731-0355	WASHER, PLAIN, M8, NARROW	12	REF
45	731-0373	WASHER, PLAIN, M6	6	
46	731-0532	Screw, M8x1.25, 12mm, HHM, HE, CS, NKL, Gr-8.8	8	REF
47	740-7164	Washer, M6, Ø6.5xØ16x1mm, SS	1	
48	740-7187	Screw, M6x1.0, 10mm, BHC, HE, SS	2	
49	740-7404	Screw, M6x1.0, 12mm, SHC, HK, SS	6	
50	740-7553	BEARING, 6005 SERIES, 25x47x12, 2RS	4	
51	740-7555	NUT, AXLE, B/B, M24x1.5	2	
52	740-7558-XX	END CAP, STABILIZER	4	
53	740-7850-XX	GAP, PLUG, 38mm-ØD	2	REF
54	740-7916	M5 X 16MM, DOWEL PIN	2	
55	740-8006	WHEEL, FRONT FOOT, SPINNER	2	
56	740-8007	Bolt, Sex, M6x1.0, Ø8mm x 30mm	2	
57	740-8145	BOLT, CRANKARM, M8	2	

DOCUMENT STATUS:

NOTICE OF PROPRIETARY INFORMATION
THIS DOCUMENT SHALL NOT BE REPRODUCED NOR SHALL THE INFORMATION CONTAINED HEREIN BE USED BY OR DISCLOSED TO OTHER EXCEPT AS EXPRESSLY AUTHORIZED BY CORE HEALTH & FITNESS, LLC.

MATERIAL
SEE BOM

FINISH
SEE NOTES

VENDOR:

P/N:

THIRD ANGLE PROJECTION



DRAWN	INITIAL SCN	DATE 8/19/2015
CHECKED		
APPROVED		

CORE HEALTH & FITNESS, LLC
4400 NE 77th Ave., Suite 300
Vancouver, WA 98662

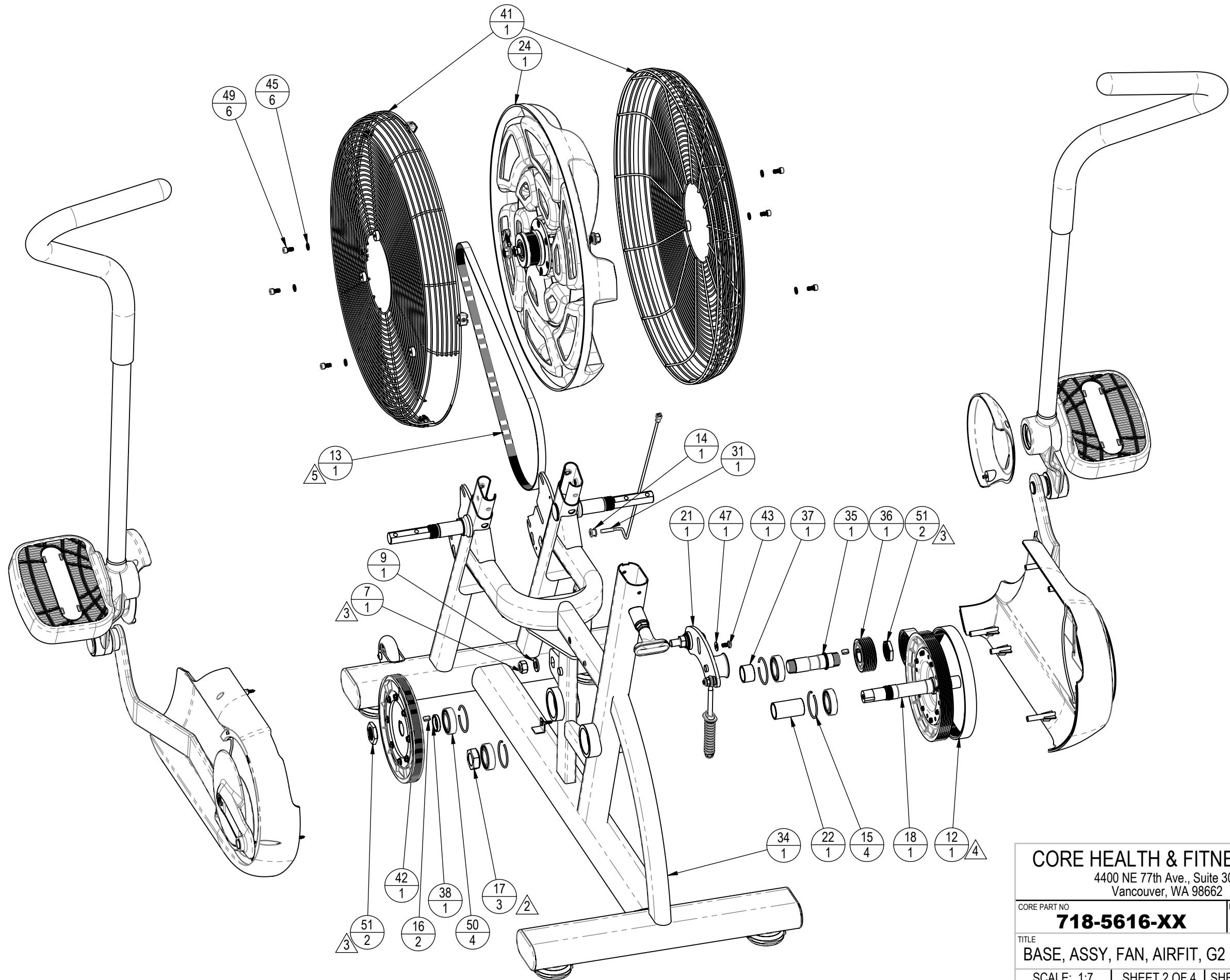
CORE PART NO
718-5616-XX REV **A**

TITLE
BASE, ASSY, FAN, AIRFIT, G2

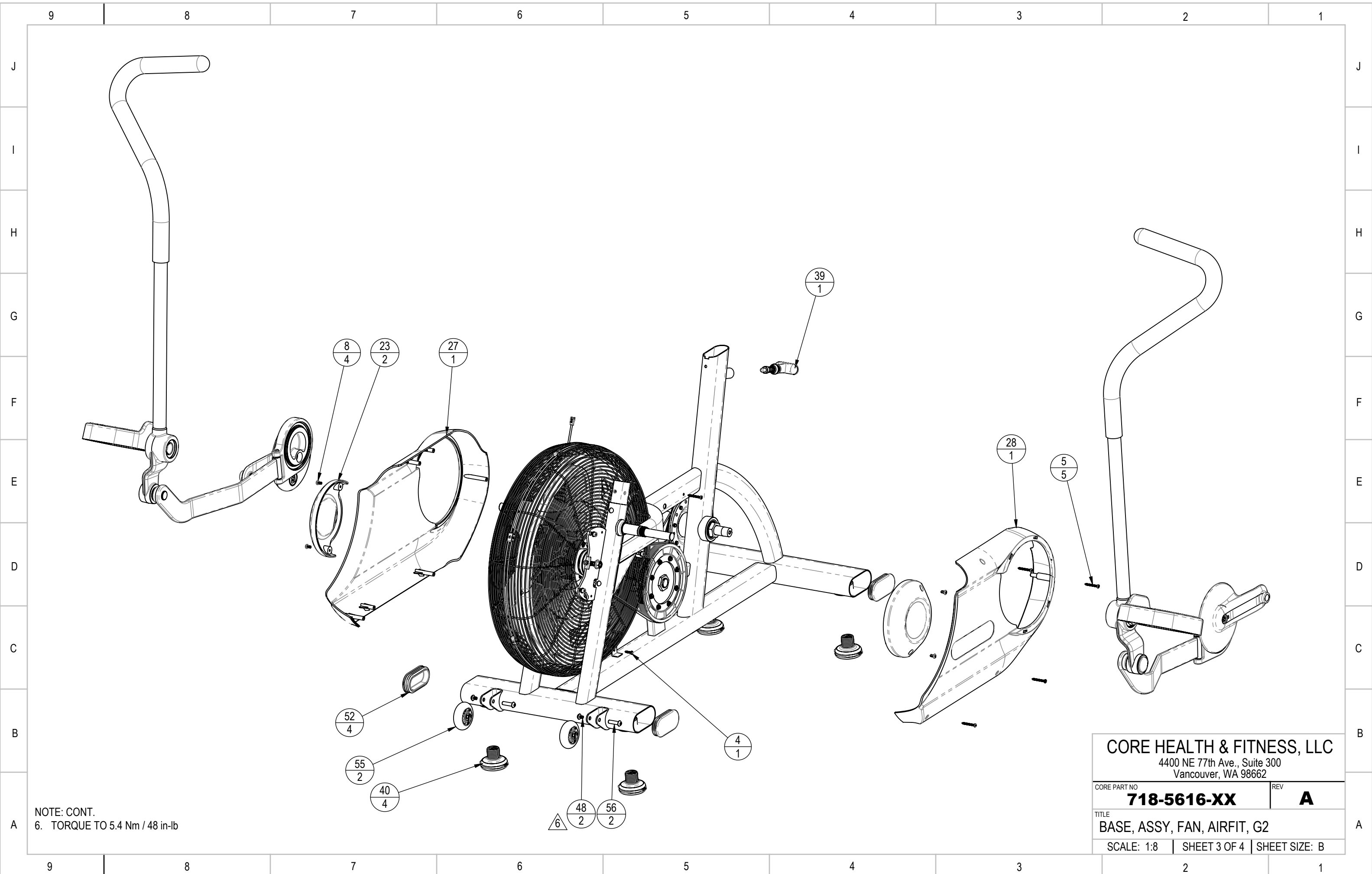
SCALE: 1:12 | SHEET 1 OF 4 | SHEET SIZE: B

NOTES: CONT.

- 2. TORQUE TO Nm 67.8 Nm / 50 ft-lb
- 3. TORQUE TO Nm 54.2 Nm / 40 ft-lb
- 4. TENSION BELT TO 130-140 Hz
- 5. TENSION BELT TO 95-105 Hz

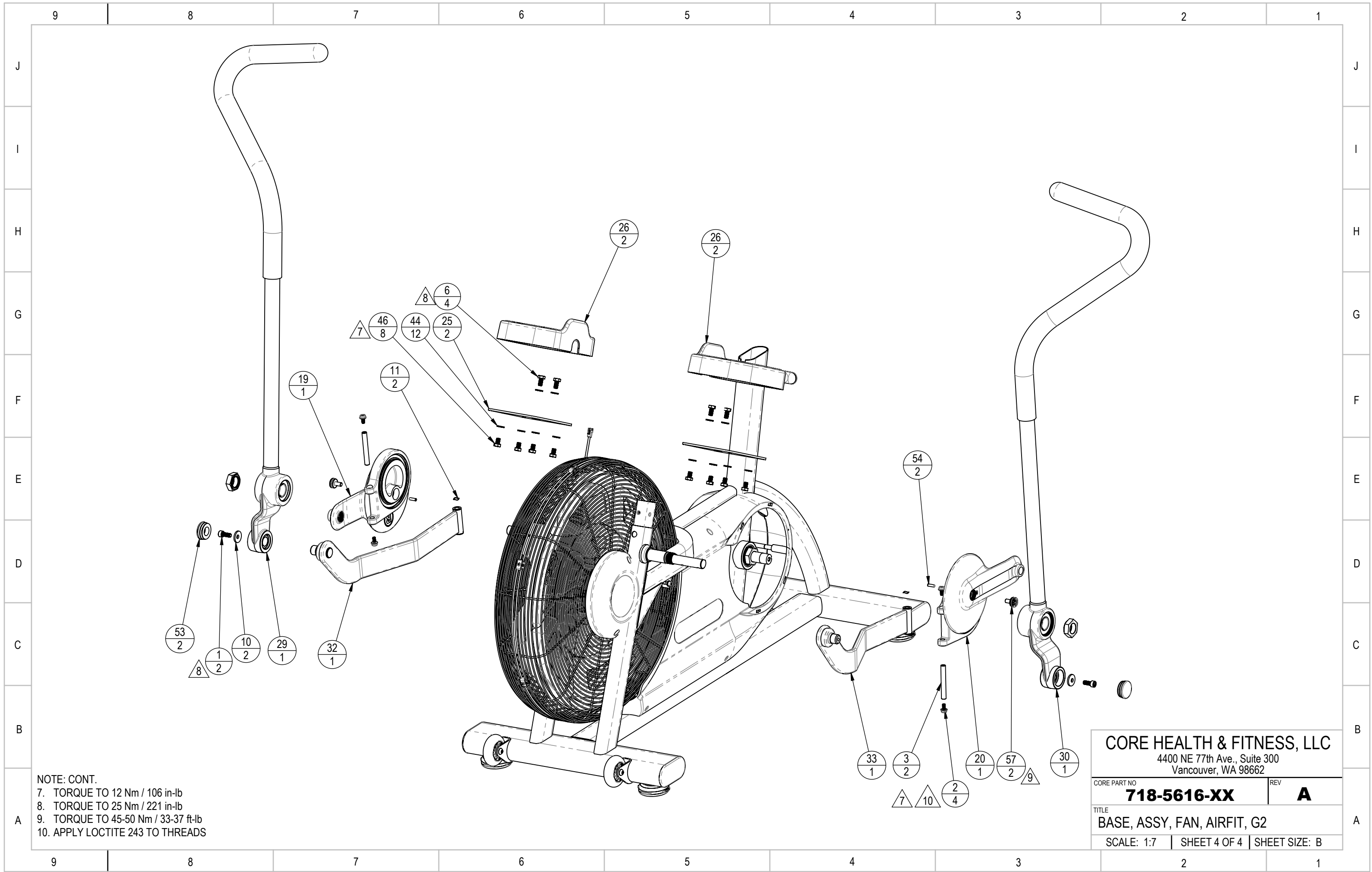


CORE HEALTH & FITNESS, LLC 4400 NE 77th Ave., Suite 300 Vancouver, WA 98662	
CORE PART NO 718-5616-XX	REV A
TITLE BASE, ASSY, FAN, AIRFIT, G2	
SCALE: 1:7	SHEET 2 OF 4 SHEET SIZE: B



NOTE: CONT.
 6. TORQUE TO 5.4 Nm / 48 in-lb

CORE HEALTH & FITNESS, LLC 4400 NE 77th Ave., Suite 300 Vancouver, WA 98662		
CORE PART NO	718-5616-XX	REV A
TITLE BASE, ASSY, FAN, AIRFIT, G2		
SCALE: 1:8	SHEET 3 OF 4	SHEET SIZE: B



NOTE: CONT.
 7. TORQUE TO 12 Nm / 106 in-lb
 8. TORQUE TO 25 Nm / 221 in-lb
 9. TORQUE TO 45-50 Nm / 33-37 ft-lb
 10. APPLY LOCTITE 243 TO THREADS

CORE HEALTH & FITNESS, LLC 4400 NE 77th Ave., Suite 300 Vancouver, WA 98662	
CORE PART NO 718-5616-XX	REV A
TITLE BASE, ASSY, FAN, AIRFIT, G2	
SCALE: 1:7	SHEET 4 OF 4 SHEET SIZE: B