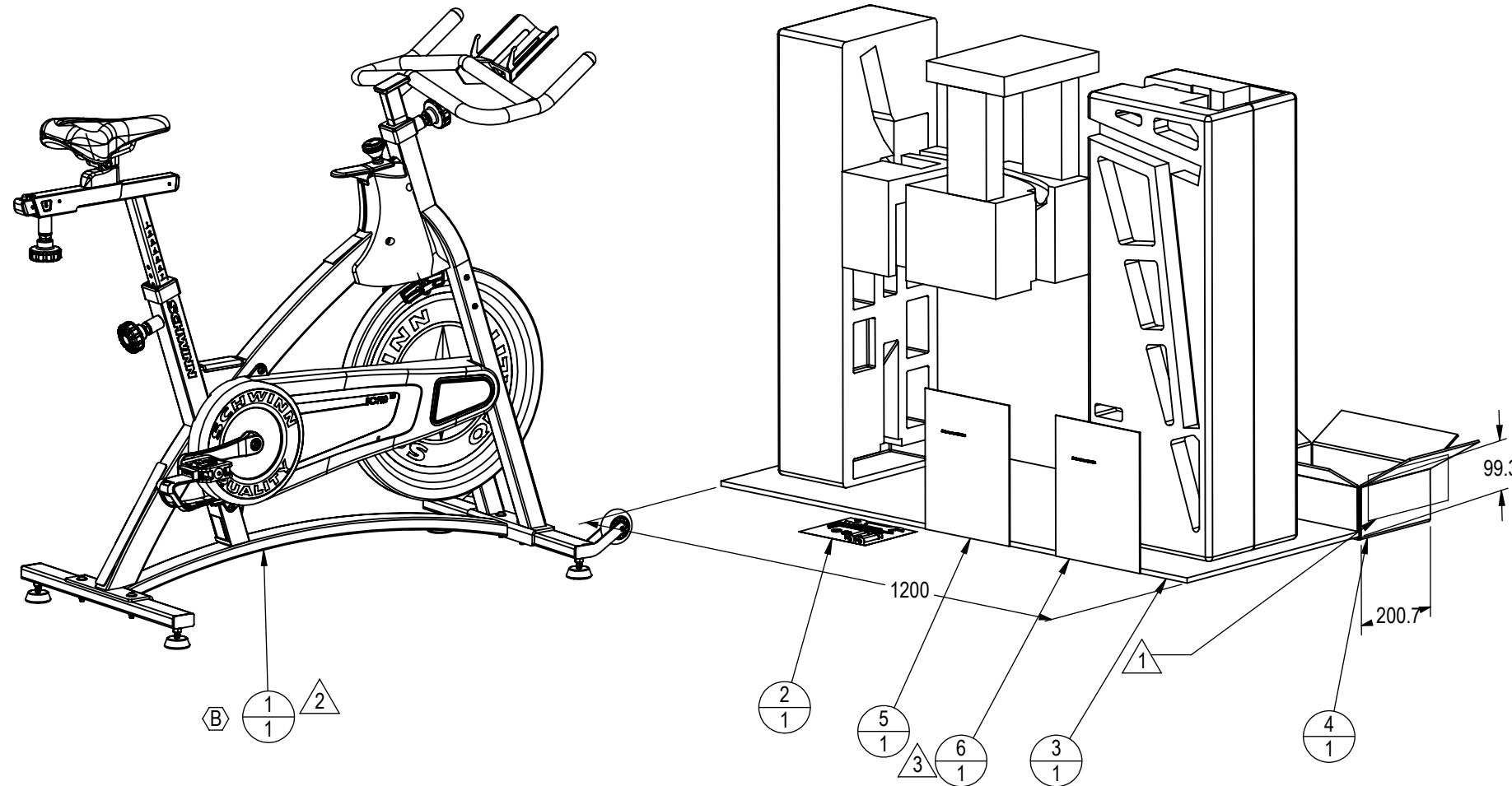


REVISION HISTORY				
REV	DATE	DESCRIPTION	ECO	BY
A	8/20/2014	RELEASE	14739	OT
B	7/3/2017	KNOBBS CHANGED TO ROUND STYLE.	15737	BA



NOTES:

1. LABEL INFORMATION:
 - a. MODEL: SCHWINN IC PRO 20
 - b. SKU: 100182
 - c. SERIAL NUMBER: PER DOCUMENT 050-2125
 - d. COUNTRY OF ORIGIN TO BE PRINTED ON PEEL LABEL
2. TO BE BAGGED IN A PLASTIC BAG TO PREVENT CONTACT WITH FOAM INSERTS
3. DOCUMENTS TO BE PLACED IN BAG 050-2080
4. TO BE PRE-PACKED WITH DESSICANT TO PREVENT HUMIDITY
5. SHIPPING WEIGHT 120 LBS

ITEM NO.	PART NUMBER	DESCRIPTION	QTY.
(B) 1	100182-001	IC PRO 20	1
2	740-8767	TOOLCARD, IC PRO 20	1
3	740-8768	FOAM, PACKAGING, IC PRO 20	1
4	050-2157	BOX, 12x8x4, SINGLE WALL GR/38	1
5	030-0006	MANUAL, OWNERS, AC BIKES	1
6	030-0007	MANUAL, INSTALL, AC BIKES	1

**DOCUMENT STATUS:
RELEASE**

NOTICE OF PROPRIETARY INFORMATION

THIS DOCUMENT SHALL NOT BE REPRODUCED NOR SHALL THE INFORMATION CONTAINED HEREIN BE USED BY OR DISCLOSED TO OTHER EXCEPT AS EXPRESSLY AUTHORIZED BY CORE HEALTH & FITNESS, LLC.

CLASS OF WORK	UNLESS OTHERWISE SPECIFIED DIMS ARE IN mm. TOLERANCES FOR MEASURE OF LENGTH ARE:							ANGLES = ±2°
	0.5 to 3	>3 to 6	>6 to 30	>30 to 120	>120 to 400	>400 to 1000	>1000 to 2000	
FINE	±0.05	±0.05	±0.1	±0.15	±0.2	±0.3	±0.5	----
MEDIUM X	±0.1	±0.1	±0.2	±0.3	±0.5	±0.8	±1.2	±2
COARSE	±0.2	±0.3	±0.5	±0.8	±1.2	±2	±3	±4
VERY COARSE	----	±0.5	±1	±1.5	±2.5	±4	±6	±8

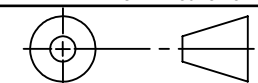
MATERIAL
SEE BOM

FINISH
SEE BOM

VENDOR:

P/N: N/A

THIRD ANGLE PROJECTION



DRAWN	INITIAL	DATE
CHECKED		
APPROVED		

CORE HEALTH & FITNESS, LLC
4400 NE 77th Ave., Suite 300
Vancouver, WA 98662

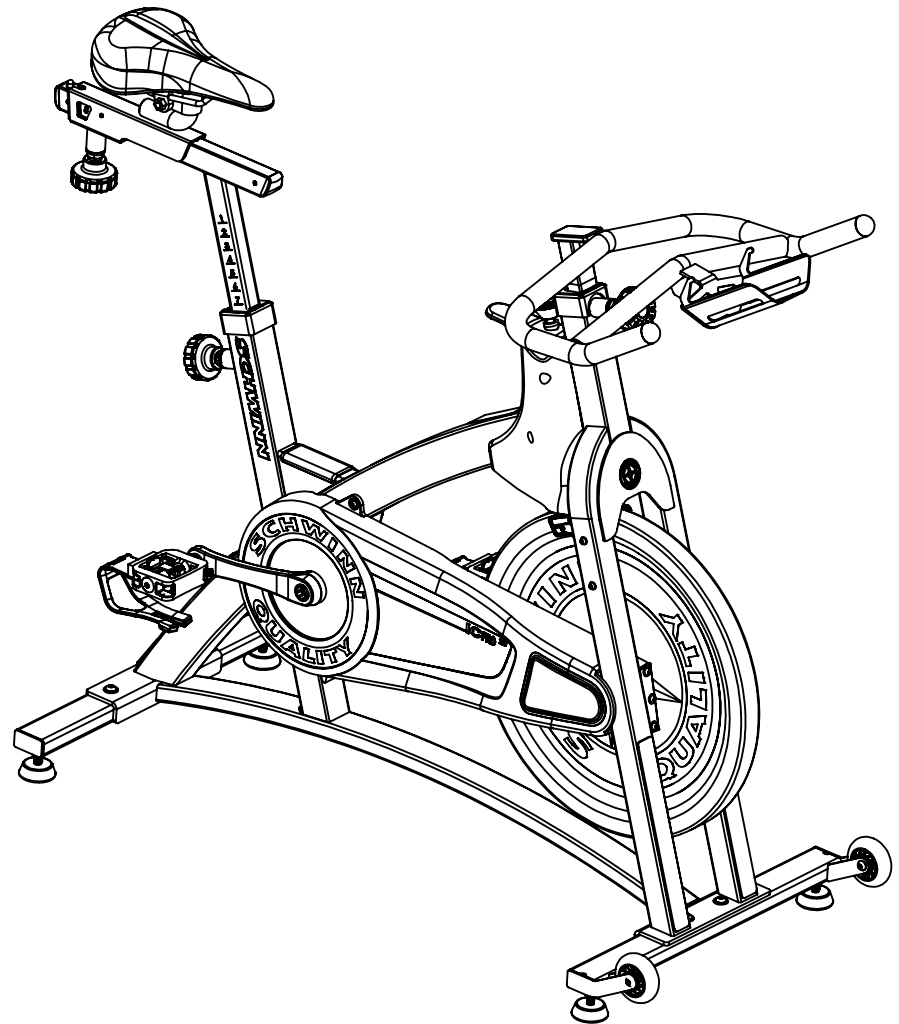
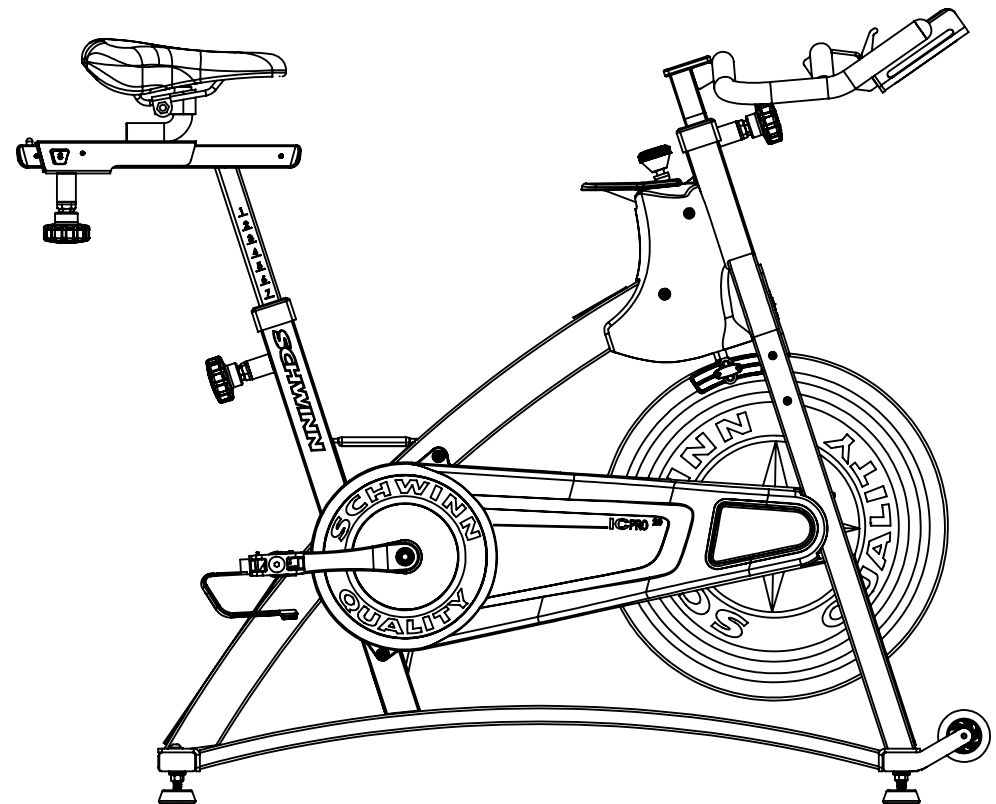
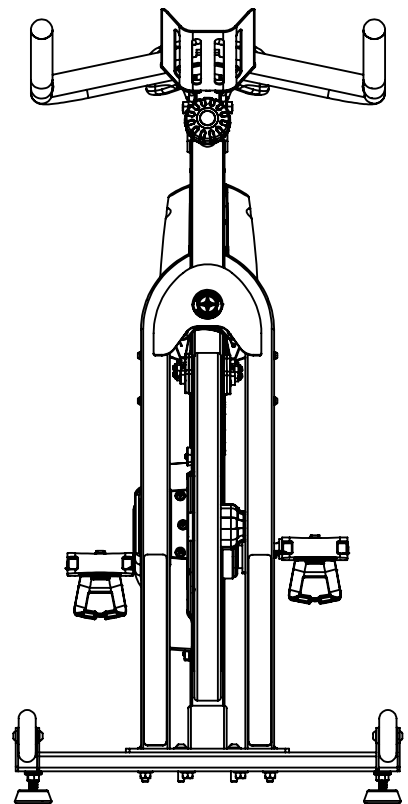
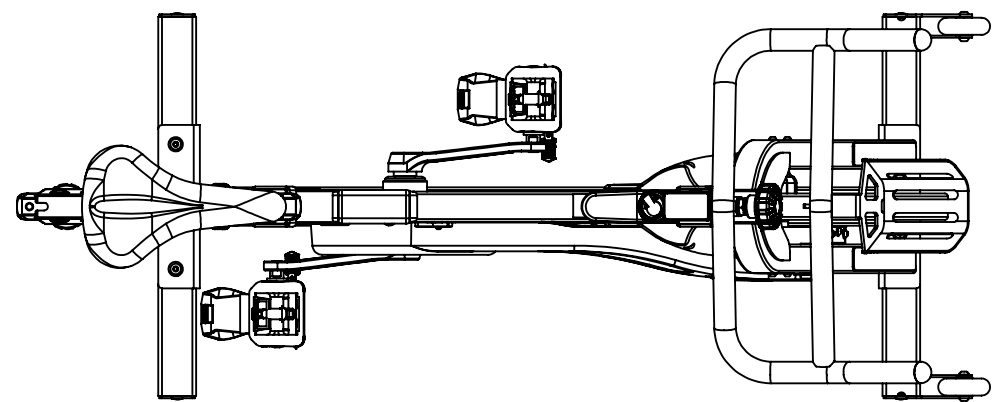
CORE PART NO: **100182** REV: **B**

TITLE: **IC PRO 20**

SCALE: 1:12 SHEET 1 OF 1 SHEET SIZE: B

NOTES:

REVISION HISTORY				
REV	DATE	DESCRIPTION	ECO	BY
A	7/31/2014	RELEASE	14739	OT
B	7/3/2017	001-7345 WAS 002-2265 740-8745 UPDATED FOR NEW STYLE KNOB.	15737	BA
C	11/13/2018	REMOVE 740-8745; ADD 1X 001-7345, 1X 718-5764, 1X 740-9090, 1X 740-9091	16032	BA



**DOCUMENT STATUS:
RELEASE**

NOTICE OF PROPRIETARY INFORMATION
THIS DOCUMENT SHALL NOT BE REPRODUCED NOR SHALL THE INFORMATION CONTAINED HEREIN BE USED BY OR DISCLOSED TO OTHER EXCEPT AS EXPRESSLY AUTHORIZED BY CORE HEALTH & FITNESS, LLC.

CLASS OF WORK	UNLESS OTHERWISE SPECIFIED DIMS ARE IN mm. TOLERANCES FOR MEASURE OF LENGTH ARE:							ANGLES = ±2°
	0.5 to 3	>3 to 6	>6 to 30	>30 to 120	>120 to 400	>400 to 1000	>1000 to 2000	
FINE	±0.05	±0.05	±0.1	±0.15	±0.2	±0.3	±0.5	----
MEDIUM	X ±0.1	±0.1	±0.2	±0.3	±0.5	±0.8	±1.2	±2
COARSE	±0.2	±0.3	±0.5	±0.8	±1.2	±2	±3	±4
VERY COARSE	----	±0.5	±1	±1.5	±2.5	±4	±6	±8

MATERIAL
SEE BOM

FINISH
SEE BOM

VENDOR: _____ P/N: _____

THIRD ANGLE PROJECTION		
DRAWN	INITIAL OT	DATE 05/23/2018
CHECKED		
APPROVED		
	U.O.M.	MM

CORE HEALTH & FITNESS, LLC
4400 NE 77th Ave., Suite 300
Vancouver, WA 98662

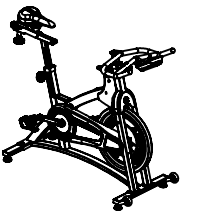
CORE PART NO: **100182-001** REV: **C**

TITLE: **IC PRO 20**

SCALE: 1:10 SHEET 1 OF 7 SHEET SIZE: B

ITEM NO.	PART NUMBER	DESCRIPTION	DEFA ULT/Q TY.
1	000-0011	AC PEDAL ASSY SET (1261-WAMD10-001)	1
2	001-7345	KNOB, POP PIN, LONG, ASSEMBLY, SCHWINN	3
3	002-2780	LEFT CRANK ARM, ISIS	1
4	003-1508	ISIS BB, 68 X 113mm	1
5	003-7529	BRAKE ASSY	1
6	003-7555	STABILIZER, IC PRO 20, REAR	1
7	003-7582	RUBBER STOPPER, BRAKE ASSY	2
8	015-0001	LABEL, SERIAL, IC PRO	1
9	015-0007	CHAIN, 1/2 X 1/8", 112L, KMC	1
10	015-0009	RIGHT CRANK W/SPROCKET, ISIS M12, 1/8	1
11	050-1955	LABEL, WARNING, COMM, SPINNERS	1
12	050-2115	LABEL, COUNTRY OF ORIGIN	1
13	110-3399	SCREW, M8x20MM, BHC,CS,HK,BO	2
14	110-3467	Screw, M4x0.7, 8mm, PHM, PH, SS	2
15	110-3557	SCREW,M5X0.8,BHC,HE,SS	4
16	110-3619	NUT, M10X1, NYLOC,SS	1
17	110-3620	SCREW, M8X1.25X45, BHC, SS	4
18	120-3361	WASHER M5	14
19	718-5764	SADDLE, BLACK, AC BIKE	1
20	731-0585	WASHER,M4	2
21	731-1363	NUT, M6X1.0, NYLOC	1
22	740-7146	Washer, M8, Ø8.5xØ19x1.2mm, SS	10
23	740-7167	Washer, Lock, Split, M6	2
24	740-7174	NUT, M6X1, HE, SS	2
25	740-7176	SCREW, M6X1.0X50, HHM, HE, SS	2
26	740-7303	Nut, Rivet, Hex, M5X0.8	11
27	740-8741_001	ASSY,CHAINGUARD, OUTER, ICPRO20	1
28	740-8741_002	CHAINGUARD, INNER, IC PRO 20	1
29	740-8741_003	CHAINGUARD, WING, IC PRO 20	1

ITEM NO.	PART NUMBER	DESCRIPTION	DEFA ULT/Q TY.
30	740-8741_004	CHAINGUARD, FRONT, IC PRO 20	1
31	740-8741_006	CAP, HOLE, CHAINGUARD, IC PRO 20	1
32	740-8742	ASSY, FLYWHEEL, IC PRO 20	1
33	740-8743	ASSY, FRAME, IC PRO 20	1
34	740-8744	ASSY, STABILIZER, FRONT, IC PRO 20	1
35	740-8746	ASSY, H BAR SINGLE BOTTLE, IC PRO 20	1
36	740-8749	SLEEVE, HBAR SEATPOST, IC PRO	2
37	740-8750	HEAD BADGE, SCHWINN, 40MM	1
38	740-8751	E STOP KNOB, IC PRO	1
39	740-8752	BRAKE KNOB, IC PRO	1
40	740-8753	BRAKE HOUSING, DR, IC PRO 20	1
41	740-8754	BRAKE HOUSING, NDR, IC PRO 20	1
42	740-8755	EXTL RET RING, 5MM, ZP	1
43	740-8756	SPACER, BALL END, BRAKE, IC PRO	1
44	740-8757	SHAFT, E BRAKE, IC PRO	1
45	740-8758	BUSHING, E BRAKE, IC PRO	2
46	740-8759	BLOCK, 3/8-16, BRAKE, IC PRO	1
47	740-8761	FINGERGUARD, 16T, IC PRO 20	1
48	740-8762	FINGERGUARD, 72T, ACPP	1
49	740-8764	STEPOVER PAD, IC PRO 20	1
50	740-8770	DECAL, SEATTUBE, IC PRO 20	2
51	740-8772	STEP PAD, IC PRO 20	3
52	740-9090	ASSY, SEAT POST WITH ENDCAPS	1
53	740-9091	ASSY, SEAT SLIDER WITH SLEEVES	1
54	80044	CRANK BOLT 8MM HEX FOR ISIS	2
55	902-5550	SCW-RHP M5x0.8x12 SS	16
56	902-6063	WSH-FLAT M6 WIDE SS	1
57	98009	ROD CARRIER	4

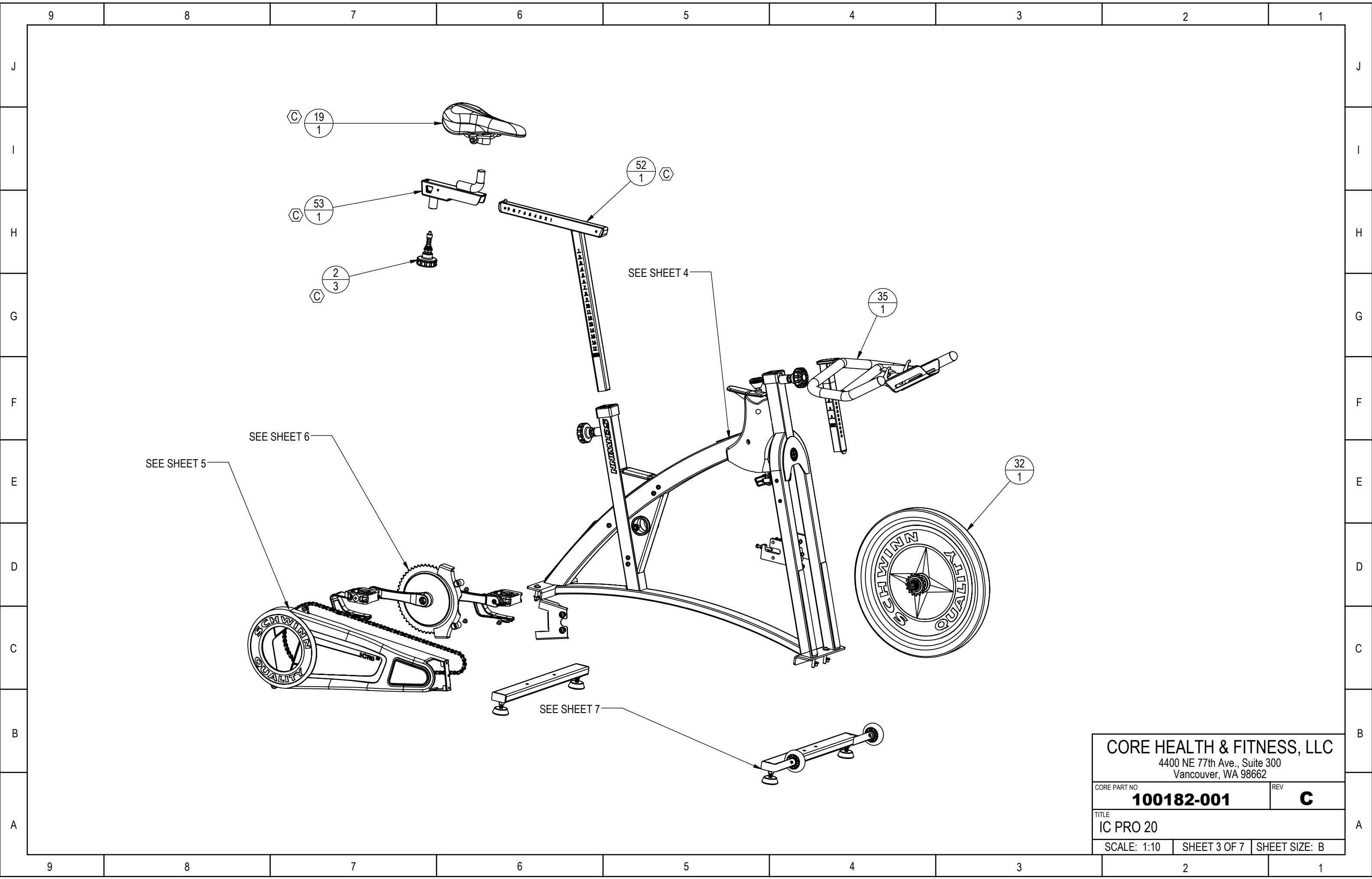


CORE HEALTH & FITNESS, LLC
 4400 NE 77th Ave., Suite 300
 Vancouver, WA 98662

CORE PART NO: **100182-001** REV: **C**

TITLE: **IC PRO 20**

SCALE: 1:50 SHEET 2 OF 7 SHEET SIZE: B



CORE HEALTH & FITNESS, LLC
 4400 NE 77th Ave., Suite 300
 Vancouver, WA 98662

CORE PART NO	REV
100182-001	C

TITLE
IC PRO 20

SCALE: 1:10	SHEET 3 OF 7	SHEET SIZE: B
-------------	--------------	---------------

9

8

7

6

5

4

3

2

1

J

J

NOTES:

- 1. CLEAN SURFACE W DENATURED ALCOHOL PRIOR TO ADHERING LABEL OR LOGOS
- 2. INSTALLATION LOAD FOR RIVNUTS: USE MFG SPEC FOR PROPER CLINCH FORCE
- 3. TORQUE TO 47-54 N-m
- 4. TORQUE TO 15 N-m
- 5. APPLY LOCTITE 242 OR 243 MED. STRENGTH THREAD LOCKER

I

I

H

H

G

G

F

F

E

E

D

D

C

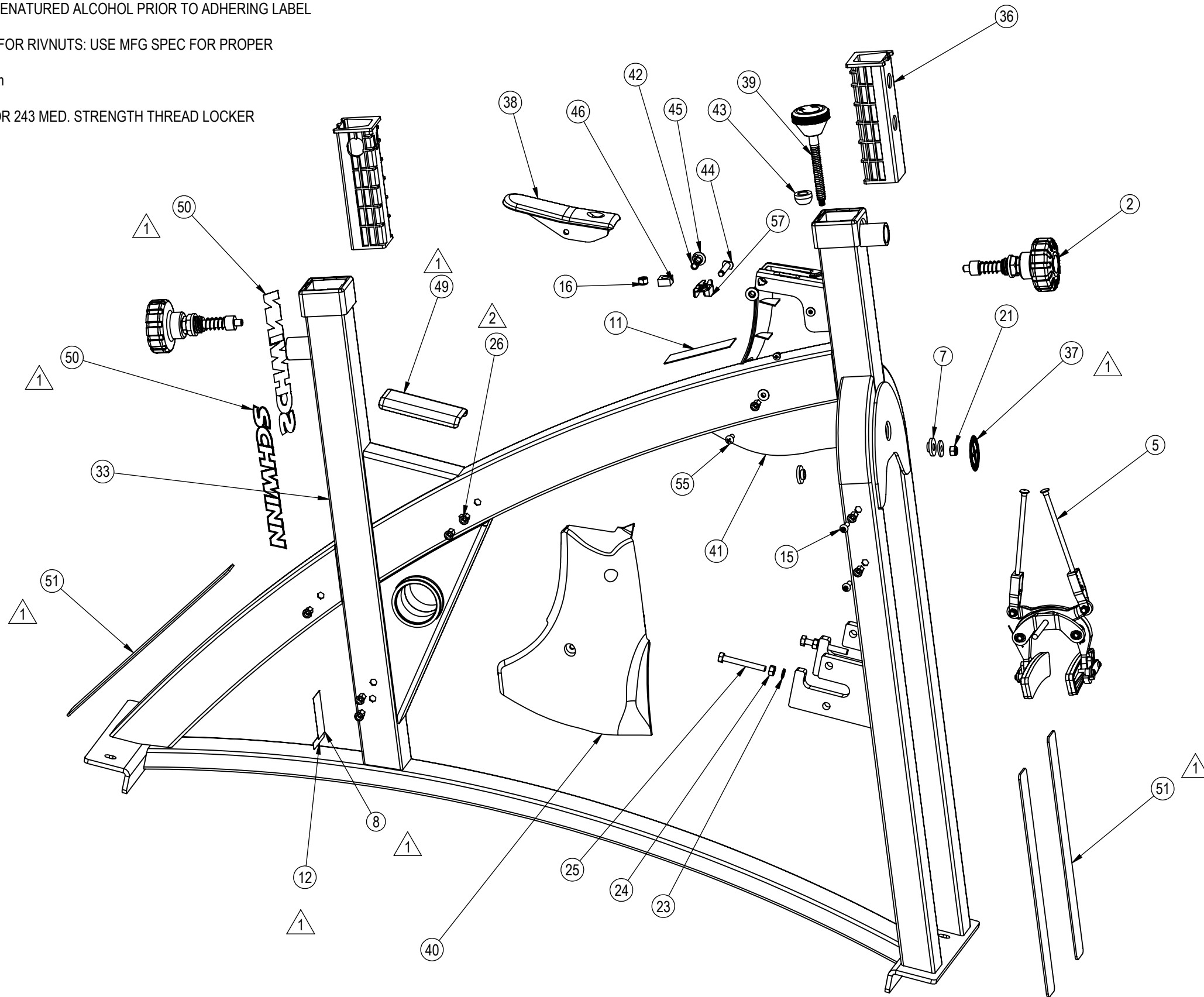
C

B

B

A

A

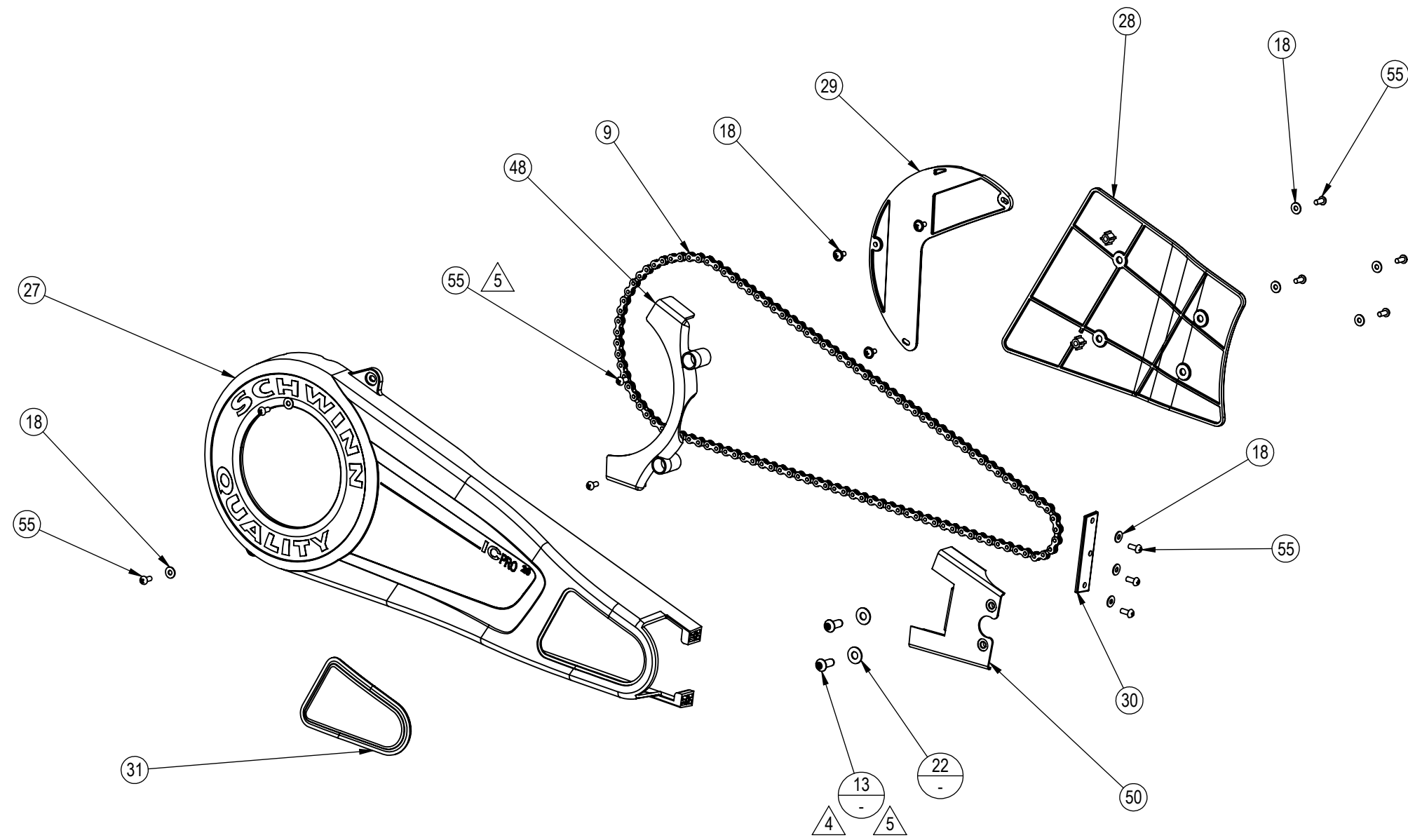


CORE HEALTH & FITNESS, LLC
 4400 NE 77th Ave., Suite 300
 Vancouver, WA 98662

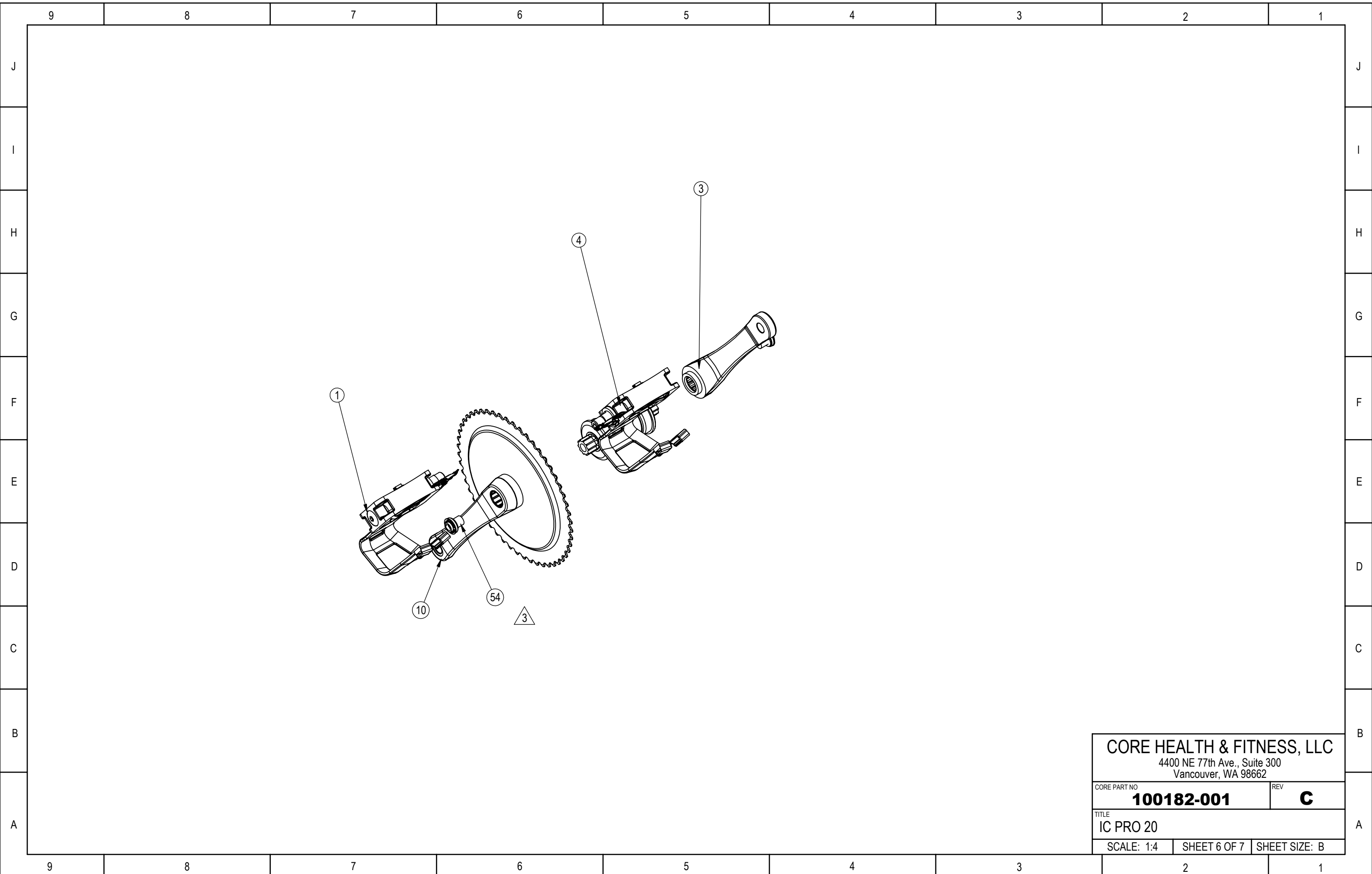
CORE PART NO	REV
100182-001	C

TITLE
IC PRO 20

SCALE: 1:5	SHEET 4 OF 7	SHEET SIZE: B
------------	--------------	---------------



CORE HEALTH & FITNESS, LLC 4400 NE 77th Ave., Suite 300 Vancouver, WA 98662		
CORE PART NO 100182-001	REV C	
TITLE IC PRO 20		
SCALE: 1:6	SHEET 5 OF 7	SHEET SIZE: B

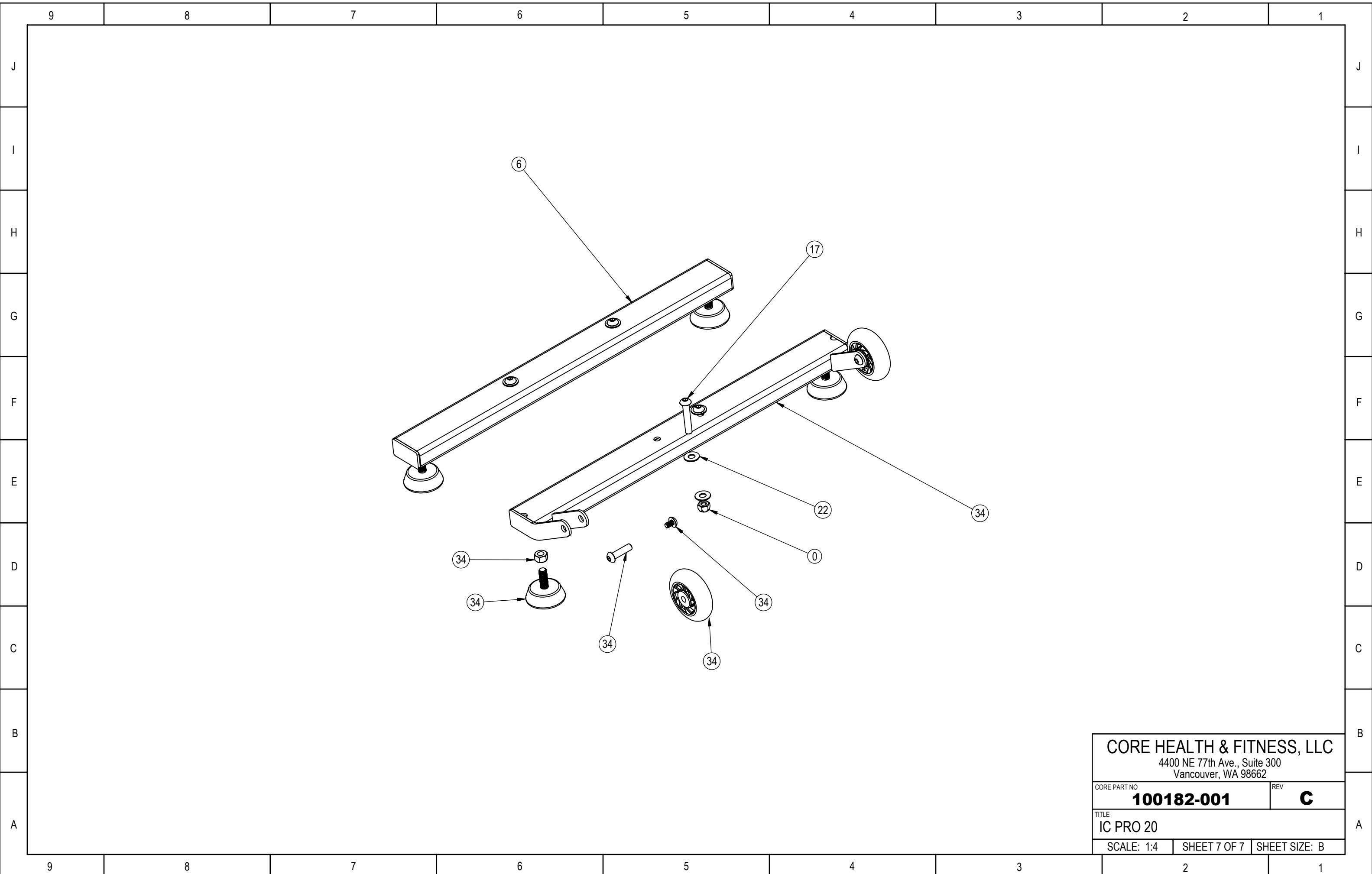


CORE HEALTH & FITNESS, LLC
 4400 NE 77th Ave., Suite 300
 Vancouver, WA 98662

CORE PART NO	100182-001	REV	C
--------------	-------------------	-----	----------

TITLE	IC PRO 20		
-------	------------------	--	--

SCALE: 1:4	SHEET 6 OF 7	SHEET SIZE: B
------------	--------------	---------------



CORE HEALTH & FITNESS, LLC
 4400 NE 77th Ave., Suite 300
 Vancouver, WA 98662

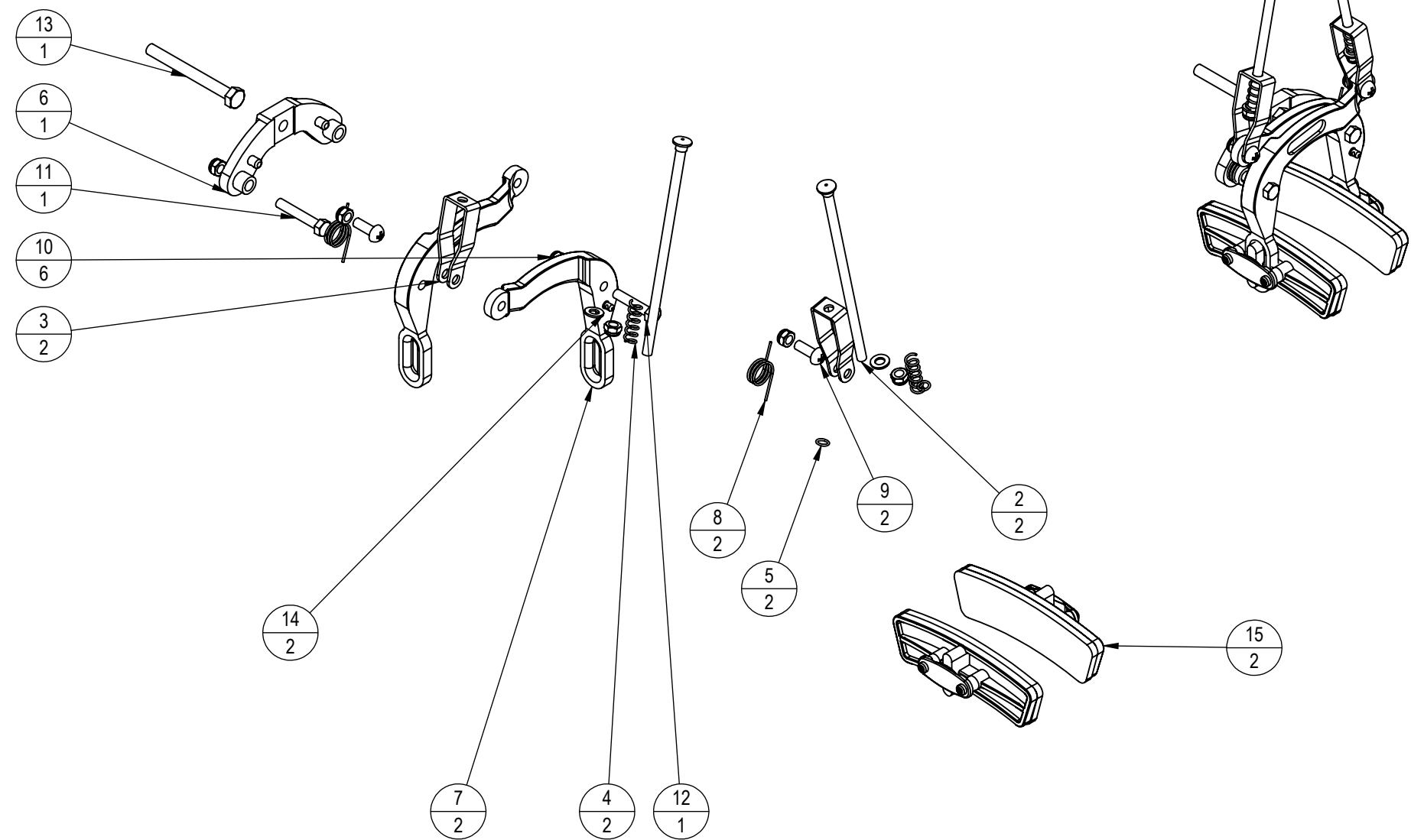
CORE PART NO	100182-001	REV	C
--------------	-------------------	-----	----------

TITLE	IC PRO 20		
-------	-----------	--	--

SCALE: 1:4	SHEET 7 OF 7	SHEET SIZE: B
------------	--------------	---------------

NOTES:

REVISION HISTORY				
REV	DATE	DESCRIPTION	ECO	BY
A	10/29/2014	RELEASE	14810	OT



ITEM NO.	PART NUMBER	DESCRIPTION	QTY.
1	84965	RESISTANCE ASSY	1
2	003-7523	SHAFT, BRAKE ASSY	2
3	003-7526	BRACKET, BRAKE ASSY	2
4	003-7525	SPRING, BRAKE ASSY	2
5	003-7524	RUBBER STOPER, BRAKE ASSY	2
6	003-7527	SUPPORTING BRACKET	1
7	003-7528	ADJUSTING BRACKET, BRAKE ASSY	2
8	003-7531	SPRING, BRAKE ASSY	2
9	902-5551	SCW-RHP M5x0.8x14 SS	2
10	902-4169	NUT NL M5-0.5 SS	6
11	902-4475	SCW-HHCS M5x0.8x30	1
12	902-4474	SCW-HHCS M5x0.8x25	1
13	902-4494	SCW-HHCS M6x1.0x60	1
14	902-6059	WSH-FLAT M5 REGUALR SS	2
15	002-6896	BRAKE PAD ASSEMBLY	2

DOCUMENT STATUS:

NOTICE OF PROPRIETARY INFORMATION
 THIS DOCUMENT SHALL NOT BE REPRODUCED OR
 SHALL THE INFORMATION CONTAINED HEREIN BE USED
 BY OR DISCLOSED TO OTHER EXCEPT AS EXPRESSLY
 AUTHORIZED BY CORE HEALTH & FITNESS, LLC.

CLASS OF WORK	UNLESS OTHERWISE SPECIFIED DIMS ARE IN mm. TOLERANCES FOR MEASURE OF LENGTH ARE:							ANGLES = ±2°
	0.5 to 3	> 3 to 6	> 6 to 30	> 30 to 120	> 120 to 400	> 400 to 1000	> 1000 to 2000	
FINE	±0.05	±0.05	±0.1	±0.15	±0.2	±0.3	±0.5	----
MEDIUM X	±0.1	±0.1	±0.2	±0.3	±0.5	±0.8	±1.2	±2
COARSE	±0.2	±0.3	±0.5	±0.8	±1.2	±2	±3	±4
VERY COARSE	----	±0.5	±1	±1.5	±2.5	±4	±6	±8

MATERIAL
SEE INDIVIDUAL PARTS

FINISH

VENDOR:

P/N:

THIRD ANGLE PROJECTION

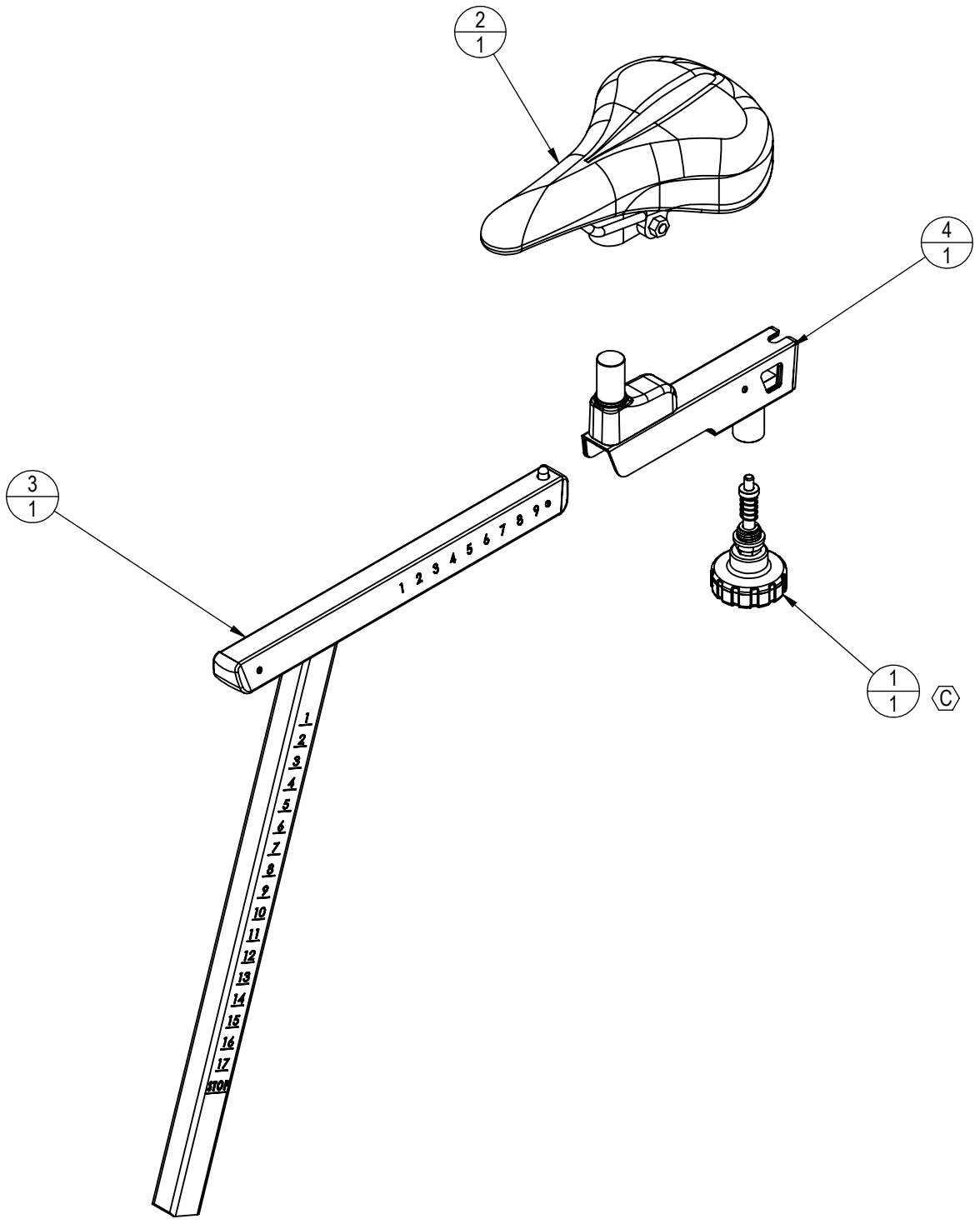


DRAWN	INITIAL	DATE
CHECKED		
APPROVED		
	U.O.M.	MM

CORE HEALTH & FITNESS, LLC
 4400 NE 77th Ave., Suite 300
 Vancouver, WA 98662

CORE PART NO	REV
003-7529	A
TITLE	
BRAKE ASSY	
SCALE: 1:3	SHEET 1 OF 1
SHEET SIZE: B	

REVISION HISTORY				
REV	DATE	DESCRIPTION	ECO	BY
A	8/18/2014	RELEASE	14739	OT
B	3/16/2016	REMOVE: 140-3576 (1), 740-8747 (1), 740-8748 (1), 740-8773 (1), 740-8775 (1), 740-8776 (1); ADD: 740-9090 (1), 740-9091 (1)	15269	MMG
C	6/16/2017	001-7345 WAS 002-2265	15737	BA



ITEM NO.	PART NUMBER	DESCRIPTION	QTY.
1	001-7345	KNOB, POP PIN, LONG, ASSEMBLY, SCHWINN	1
2	003-5821	VELO SADDLE, 30610	1
3	740-9090	ASSY, SEAT POST WITH ENDCAPS	1
4	740-9091	ASSY, SEAT SLIDER WITH SLEEVES	1

**DOCUMENT STATUS:
RELEASE**

NOTICE OF PROPRIETARY INFORMATION

THIS DOCUMENT SHALL NOT BE REPRODUCED NOR SHALL THE INFORMATION CONTAINED HEREIN BE USED BY OR DISCLOSED TO OTHER EXCEPT AS EXPRESSLY AUTHORIZED BY CORE HEALTH & FITNESS, LLC.

CLASS OF WORK	UNLESS OTHERWISE SPECIFIED DIMS ARE IN mm. TOLERANCES FOR MEASURE OF LENGTH ARE:							ANGLES = ±2°		
	0.5 to 3	>3 to 6	>6 to 30	>30 to 120	>120 to 400	>400 to 1000	>1000 to 2000	>2000		
FINE	±0.05	±0.05	±0.1	±0.15	±0.2	±0.3	±0.5	----		
MEDIUM	X ±0.1	±0.1	±0.2	±0.3	±0.5	±0.8	±1.2	±2		
COARSE		±0.2	±0.3	±0.5	±0.8	±1.2	±2	±3	±4	
VERY COARSE		----	±0.5	±1	±1.5	±2.5	±4	±6	±8	

MATERIAL SEE BOM	
FINISH SEE BOM	
VENDOR:	P/N:

THIRD ANGLE PROJECTION		
DRAWN	INITIAL	DATE
CHECKED		
APPROVED		
	U.O.M.	MM

CORE HEALTH & FITNESS, LLC 4400 NE 77th Ave., Suite 300 Vancouver, WA 98662		
CORE PART NO	REV	
740-8745	C	
TITLE ASSY, SEAT POST W SEAT IC PRO 20		
SCALE: 1:5	SHEET 1 OF 1	SHEET SIZE: B