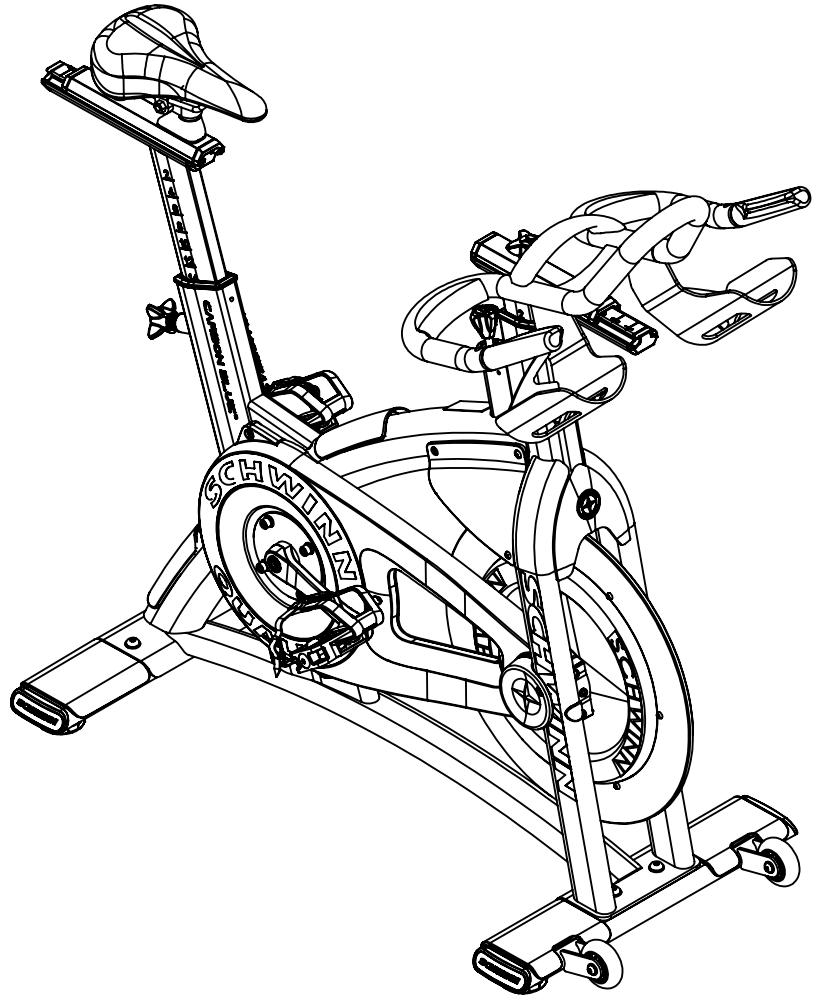
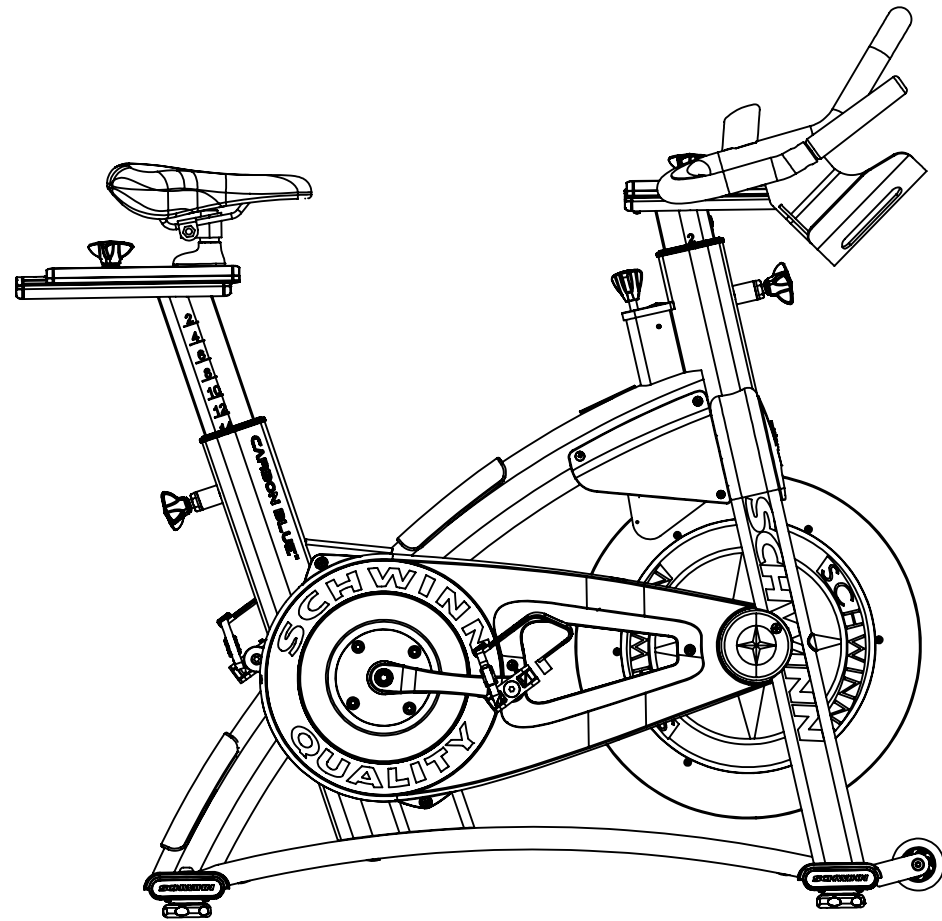
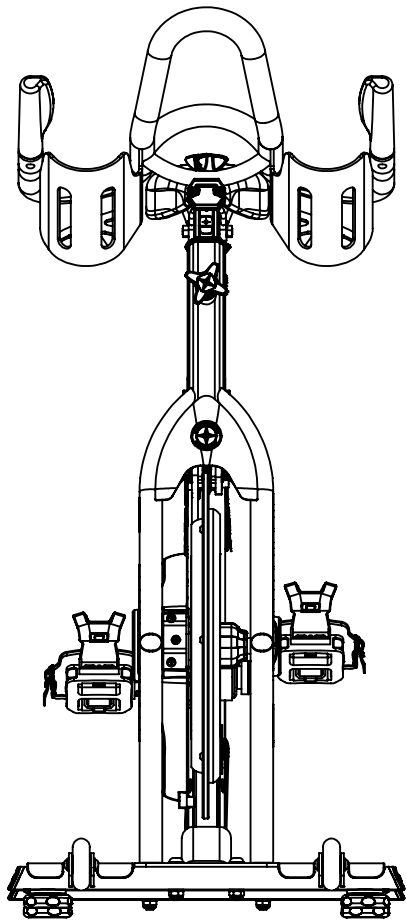
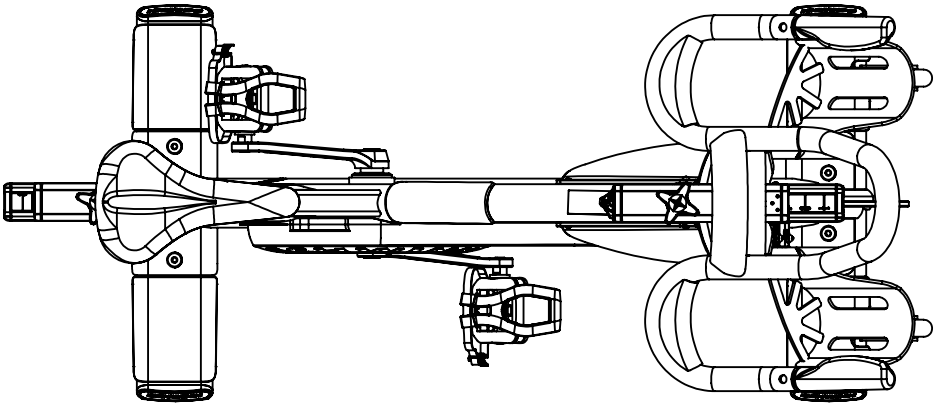


REVISION HISTORY				
REV	DATE	DESCRIPTION	ECO	BY
A	7/25/2013	PRODUCTION RELEASE	14303	OT
B	5/7/2014	REMOVE 000-0037 (OUTER CHAINGUARD), 000-0123 (INNER CHAINGUARD), 002-2787 (SLEEVE SPRING CLIP), ADD 740-8701 (OUTER GUARD), 740-8702 (INNER CHAIN GUARD), 050-1955 (WARNING LABEL), 120-3347 (SLIDER KNOB WASHER), 120-3346 (POP PIN WASHER), 000-0198 (HANDLEBAR PLUG)	14666	OT
C	9/17/2014	REMOVE 000-0119	14685	OT



DOCUMENT STATUS:

NOTICE OF PROPRIETARY INFORMATION
THIS DOCUMENT SHALL NOT BE REPRODUCED NOR SHALL THE INFORMATION CONTAINED HEREIN BE USED BY OR DISCLOSED TO OTHER EXCEPT AS EXPRESSLY AUTHORIZED BY CORE HEALTH & FITNESS, LLC.

CLASS OF WORK	UNLESS OTHERWISE SPECIFIED DIMS ARE IN mm. TOLERANCES FOR MEASURE OF LENGTH ARE:							ANGLES = ±2°
	0.5 to 3	> 3 to 6	> 6 to 30	> 30 to 120	> 120 to 400	> 400 to 1000	> 1000 to 2000	
FINE	±0.05	±0.05	±0.1	±0.15	±0.2	±0.3	±0.5	----
MEDIUM X	±0.1	±0.1	±0.2	±0.3	±0.5	±0.8	±1.2	±2
COARSE	±0.2	±0.3	±0.5	±0.8	±1.2	±2	±3	±4
VERY COARSE	----	±0.5	±1	±1.5	±2.5	±4	±6	±8

MATERIAL SEE BOM

FINISH N/A

VENDOR:

P/N:

THIRD ANGLE PROJECTION		
	INITIAL	DATE
DRAWN	OT	7/25/2013
CHECKED		
APPROVED		
	U.O.M.	MM

CORE HEALTH & FITNESS, LLC
4400 NE 77th Ave., Suite 300
Vancouver, WA 98662

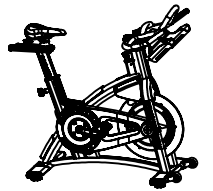
CORE PART NO: **000-0166** REV: **C**

TITLE: **ASSY, BIKE, ACPP BELT**

SCALE: 1:50 | SHEET 1 OF 7 | SHEET SIZE: B

ITEM NO.	PART NUMBER	DESCRIPTION	QTY.
1	902-5550	SCW-RHP M5x0.8x12 SS	6
2	002-2765	SLEEVE, SEAT POST/HANDLEBAR ASSY	2
3	000-0107	NUT, M6x1.0, SFL, SS	2
4	002-2265	POP PIN ASSEMBLY, SCHWINN	2
5	000-0036	SWEATGUARD, LEFT, ASSY	1
6	000-0035	SWEATGUARD RIGHT ASSY	1
7	000-0111	PLUG, 13.5MM	3
8	740-8691	PAD, STRETCH, ACPD TOP TUBE, ABS	2
9	000-0113	PLUG, TENSION BOLT, RIGHT	2
10	000-0135	PAD, RUBBER, BRAKE BUMPER, SAC	1
11	001-0731	M5 RIVNUT	10
12	000-0019	FRAME, ACPD, ASSY	1
13	000-0043	PAD, FEET PROTECTOR, WITH ADHESIVE	2
14	001-0055	STABILIZER REAR ALUMINUM WDMT	1
15	000-0136	END CAP, STABILIZER	4
16	740-7656	FEET, LEVELING, SPINNER	4
17	000-0137	SCREW, PHT, M4 X 10,SS	8
18	001-0055	STABILIZER, FRONT, ALUMINUM, WDMT	1
19	000-0141	PAD, STABILIZER	2
20	001-0688	ASSEMBLY, TRANSPORT WHEEL	2
21	740-7097	BOLT, WHEEL, NXT	2
22	740-7187	SCREW, M6X1.25X10, BHC, HE, SS	2
23	902-6065	WSH-FLAT M8 REGULAR SS	4
24	000-0097	SCHWINN QUALITY BADGE, 65 MM	1
25	000-0150	HANDLEBAR ASSY, SAC	1
26	000-0085	SEAT ASSEMBLY	1
27	902-6065	WSH-FLAT M8 REGULAR SS	8
28	902-4172	NUT NL M10-1.5 SS	4
29	902-5050	SCW-BHCS M10x1.5x50 SS	4
30	003-5551	FORK DECAL (PERFORMANCE)	1
31	000-0120	STICKER, SERIAL NUMBER, ACPV2	1
32	000-0096	SCHWINN QUALITY BADGE, 40 MM	1
33	000-0172	FLYWHEEL,ASSY,SAC BELT	1

ITEM NO.	PART NUMBER	DESCRIPTION	QTY.
34	003-1508	ISIS BB, 68X113 MM	1
35	002-2780	LEFT CRANK ARM, ISIS	1
36	000-0011	PEDAL, SET, SCHWINN	1
37	000-0170	CRANK, PULLEY, ASM, SAC BELT	1
38	000-0168	PULLEY, REAR, SAC BELT BIKE	1
39	000-0169	CRANK ARM, DRIVE, 4 BOLT ISIS	1
40	740-7825	WASHER, 8.4MM ID x 16MM OD x 1.6 THK	4
41	740-7167	WASHER, LOCK, SPLIT, M6	4
42	731-0379	SCREW,M8 X1.25,20mm,SHC,HK	4
43	80044	CRANK BOLT 8MM HEX FOR ISIS	2
44	000-0171	BELT, TIMING, GATES, 1440 8M	1
45	740-8702	SAC CHAINGUARD INNER	1
46	000-0102	CHAIN TENSION BLOCK	2
47	000-0106	SCREW, M6x1.0x60, HHM, SS	2
48	000-0115	COVER, CHAIN TENSIONER LEFT	1
49	000-0149	SCREW, M5X0.8 X 12, TRUSS HEAD, SS	2
50	902-5550	SCW-RHP M5x0.8x12 SS	8
51	740-8701	ASSY,CHAINGUARD,OUTER,SAC	1
52	000-0099	SCREW, PHP, M5x0.8x25, SS	3
53	000-0100	COVER, RIGHT DROP OUT	1
54	000-0098	BRAKE ADJMENT HOUSING ASSY	1
55	000-0124	BRAKE ADJUSTMENT CAP	1
56	001-0750	ASSEMBLY, BRAKE CARRIAGE	1
57	902-5701	SCW-SHCS M10-1.5x45 SS	1
58	003-8569	TORSION SPRING, BRAKE	1
59	902-4182	NUT HEX M10 - 1.5 SS	1
60	001-0535	THREADED BRAKE ADJUSTMENT NUT	1
61	001-0540	LINK, BRAKE ADJUSTMENT SIDE	2
62	001-0541	BRONZE BUSHING, BRAKE ADJUSTMENT LINK	4
63	902-4986	SCREW, PHP, M4x0.7x10, SS	4
64	050-1955	LABEL, WARNING, COMM, SPINNERS	1
65	740-8698	DECAL, AC CARBON BLUE	2

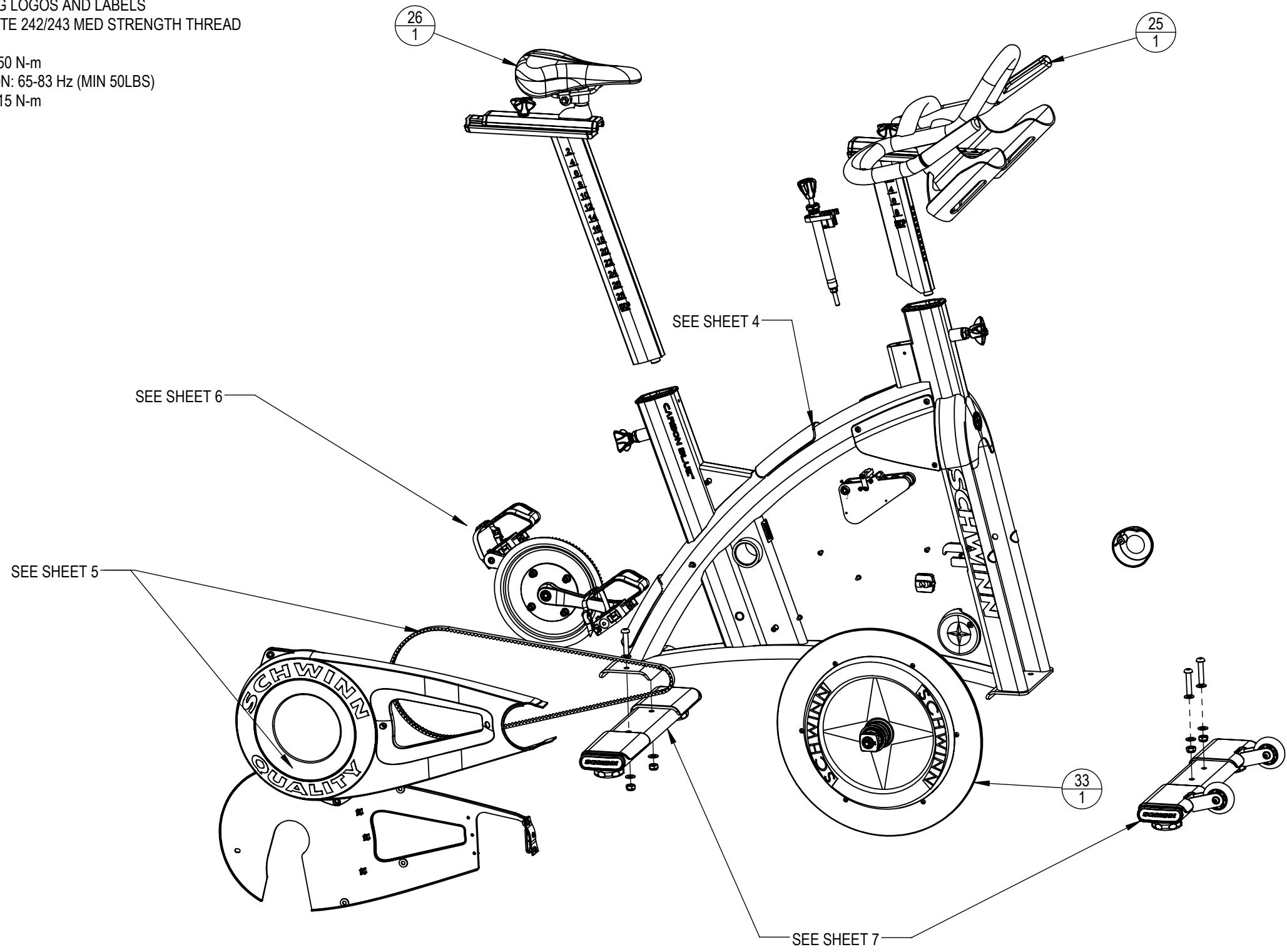


CORE HEALTH & FITNESS, LLC
4400 NE 77th Ave., Suite 300
Vancouver, WA 98662

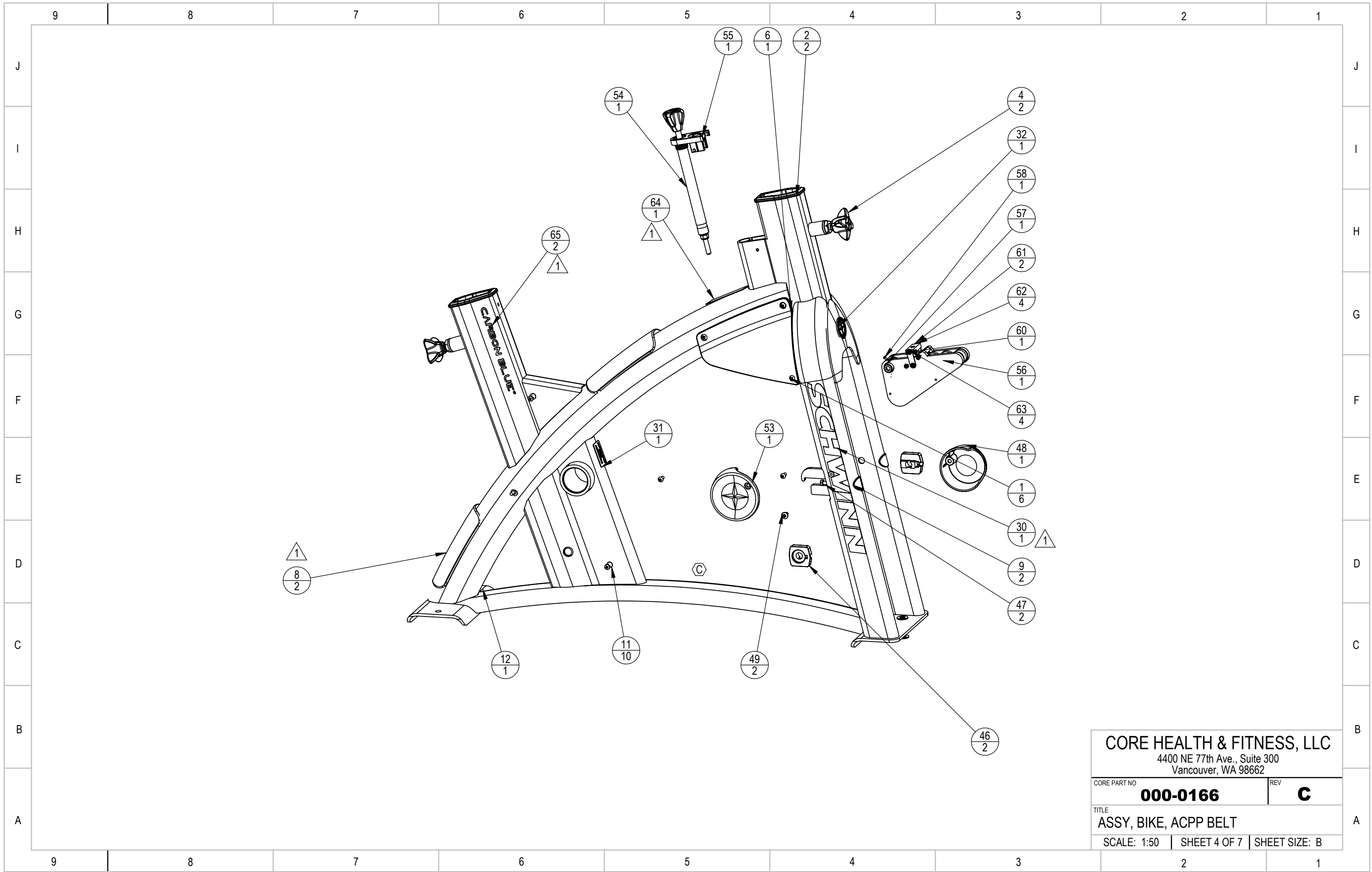
CORE PART NO	000-0166	REV	C
TITLE ASSY, BIKE, ACPD BELT			
SCALE: 1:50	SHEET 2 OF 7	SHEET SIZE: B	

NOTES:

1. CLEAN AREAS WITH DENATURED ALCOHOL PRIOR TO ADHERING LOGOS AND LABELS
2. APPLY LOCTITE 242/243 MED STRENGTH THREAD LOCKER
3. TORQUE TO 50 N-m
4. BELT TENSION: 65-83 Hz (MIN 50LBS)
5. TORQUE TO 15 N-m



CORE HEALTH & FITNESS, LLC 4400 NE 77th Ave., Suite 300 Vancouver, WA 98662		
CORE PART NO	000-0166	REV C
TITLE ASSY, BIKE, ACPP BELT		
SCALE: 1:50	SHEET 3 OF 7	SHEET SIZE: B

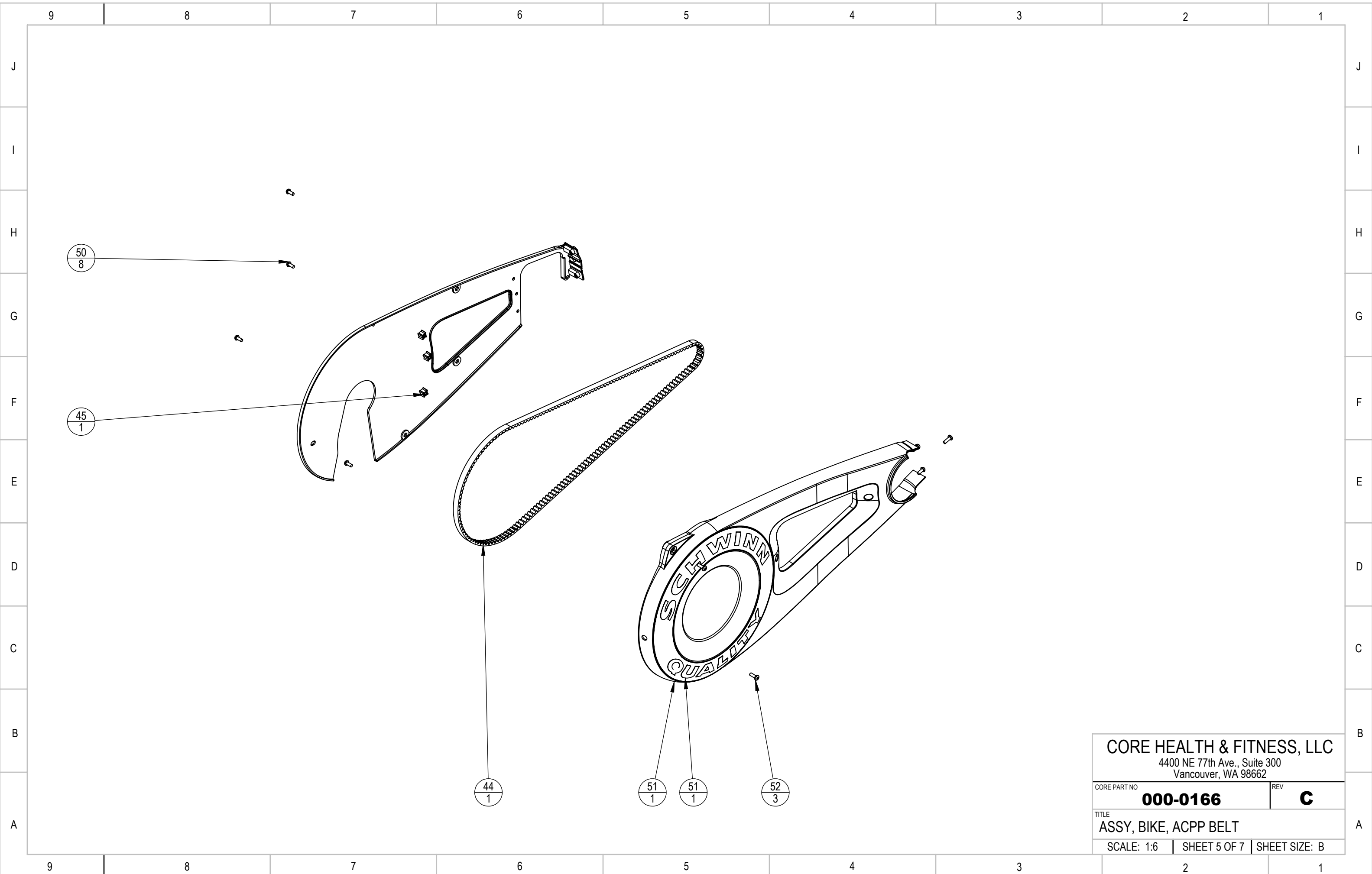


CORE HEALTH & FITNESS, LLC
 4400 NE 77th Ave., Suite 300
 Vancouver, WA 98662

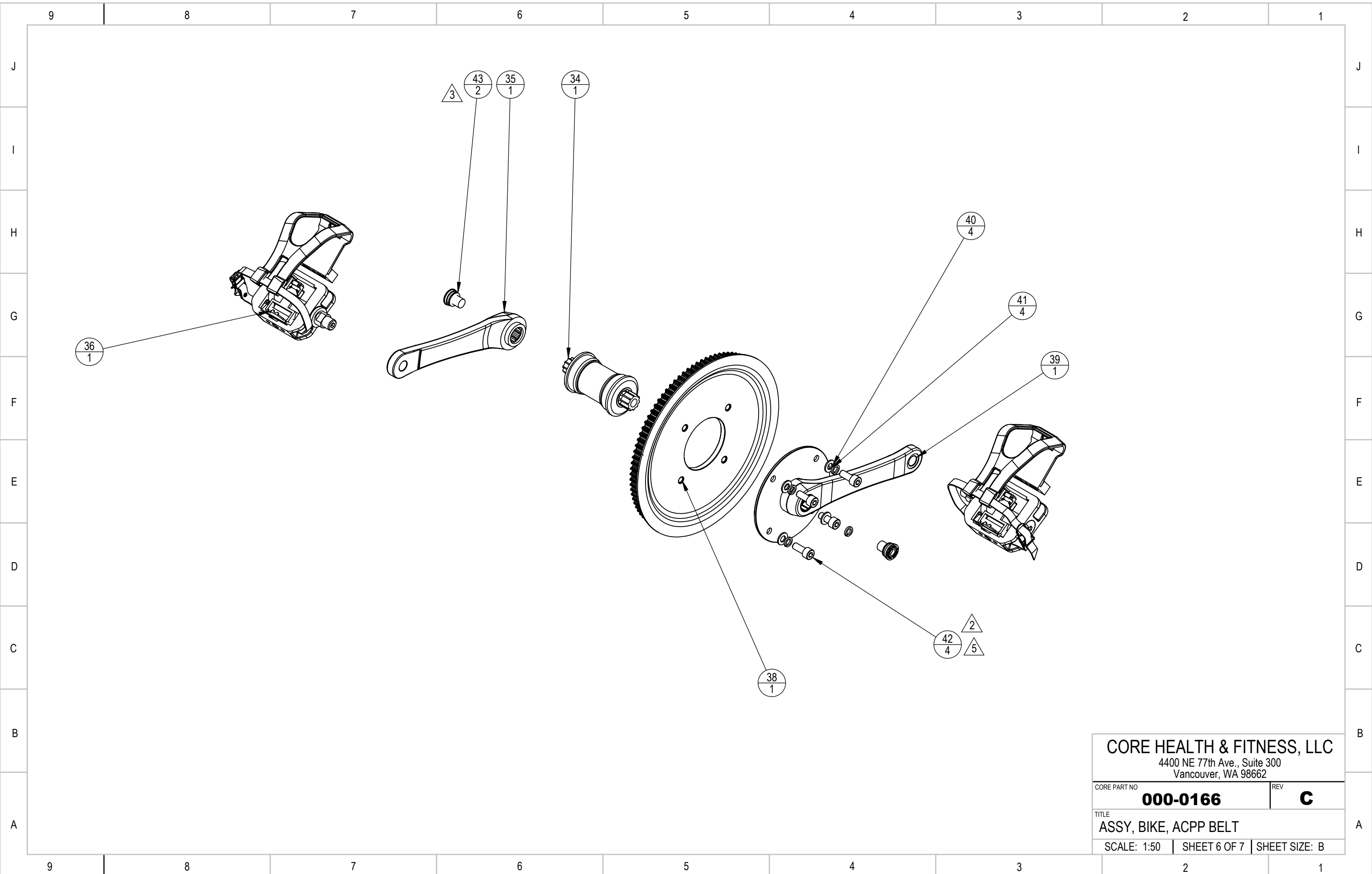
CORE PART NO	000-0166	REV	C
--------------	-----------------	-----	----------

TITLE
ASSY, BIKE, ACPP BELT

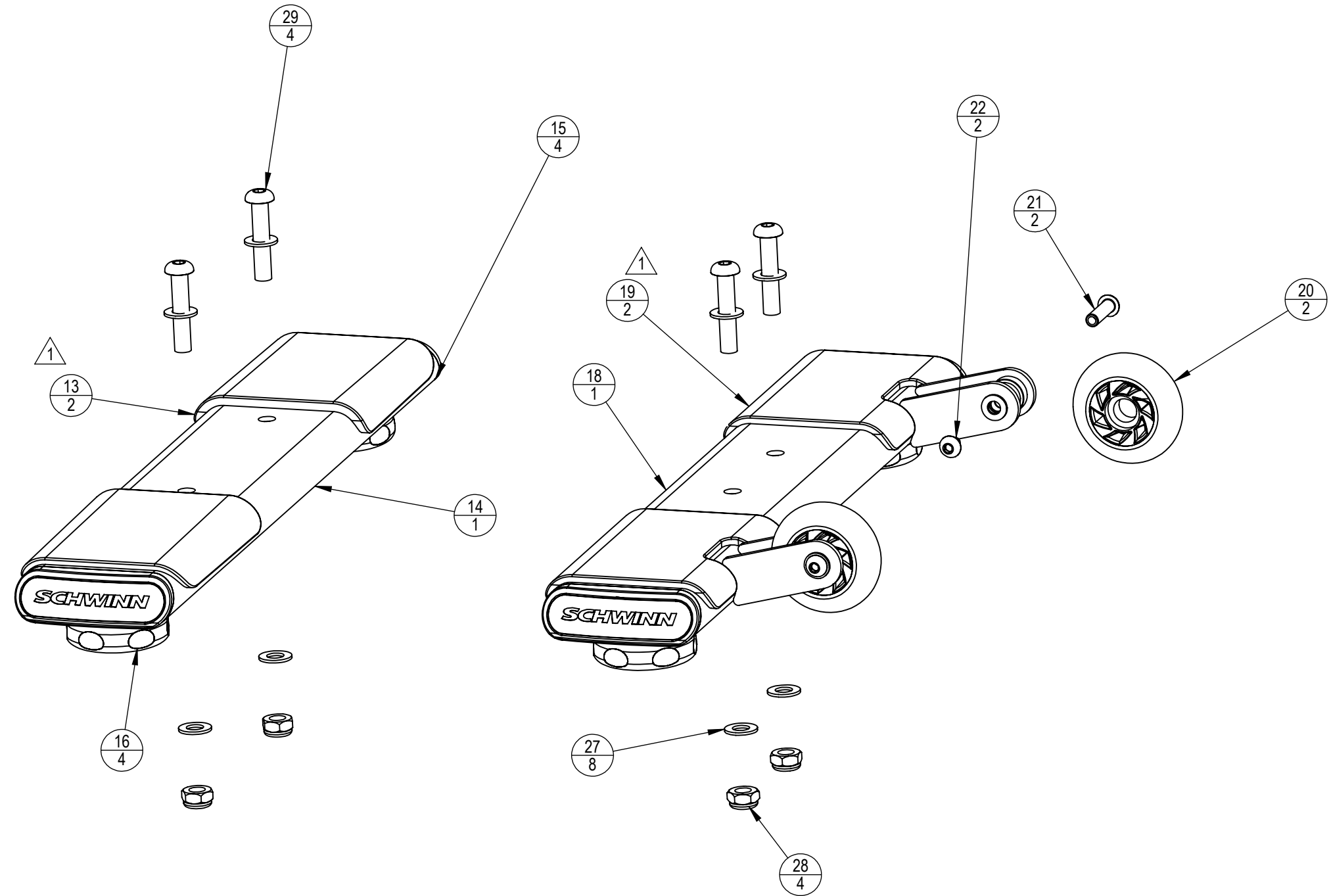
SCALE: 1:50 | SHEET 4 OF 7 | SHEET SIZE: B



CORE HEALTH & FITNESS, LLC 4400 NE 77th Ave., Suite 300 Vancouver, WA 98662		
CORE PART NO	000-0166	REV C
TITLE ASSY, BIKE, ACPP BELT		
SCALE: 1:6	SHEET 5 OF 7	SHEET SIZE: B



CORE HEALTH & FITNESS, LLC 4400 NE 77th Ave., Suite 300 Vancouver, WA 98662		
CORE PART NO	000-0166	REV C
TITLE ASSY, BIKE, ACPP BELT		
SCALE: 1:50	SHEET 6 OF 7	SHEET SIZE: B



CORE HEALTH & FITNESS, LLC 4400 NE 77th Ave., Suite 300 Vancouver, WA 98662		
CORE PART NO	000-0166	REV C
TITLE ASSY, BIKE, ACPP BELT		
SCALE: 1:50	SHEET 7 OF 7	SHEET SIZE: B