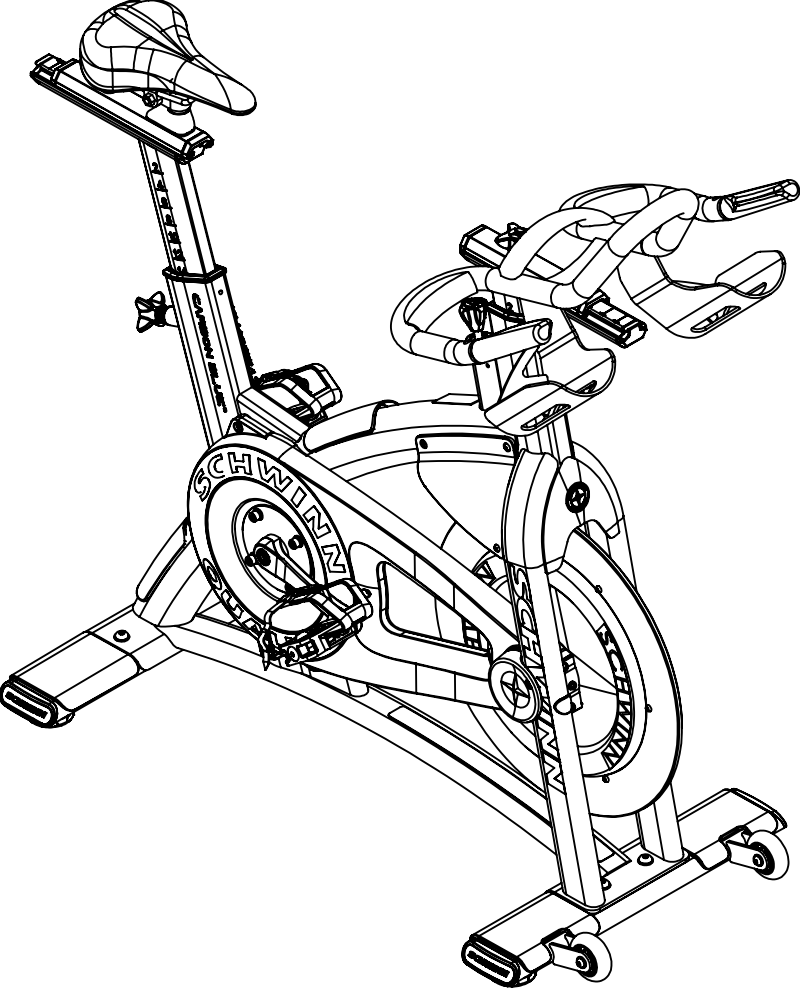
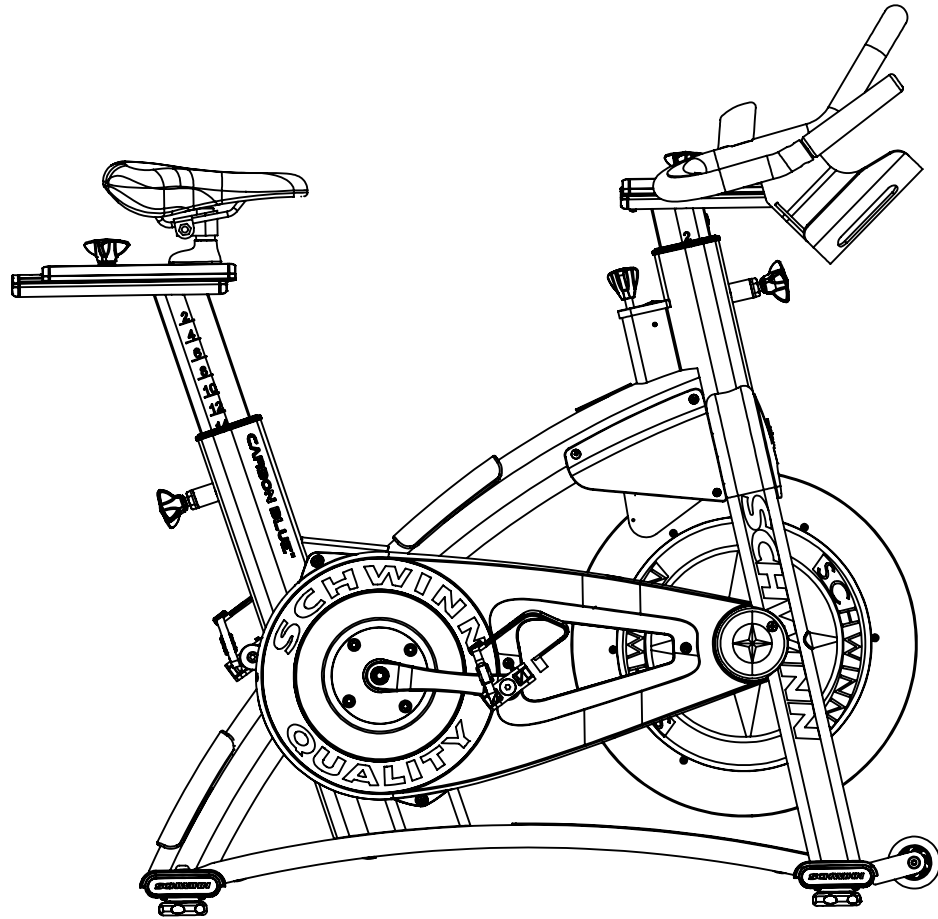
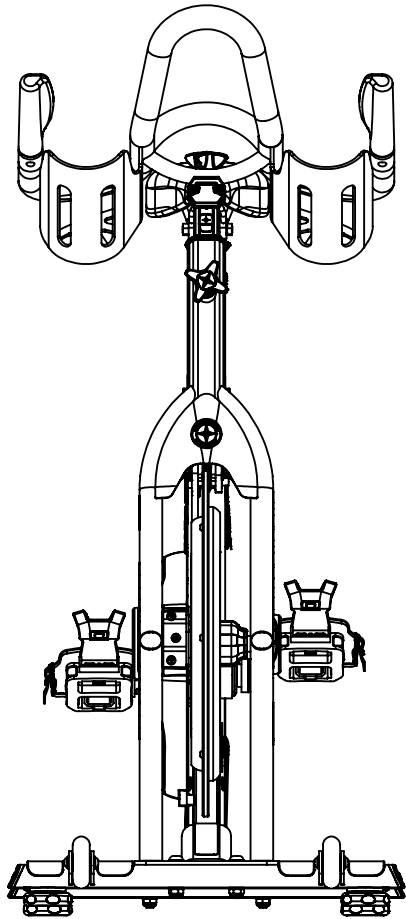
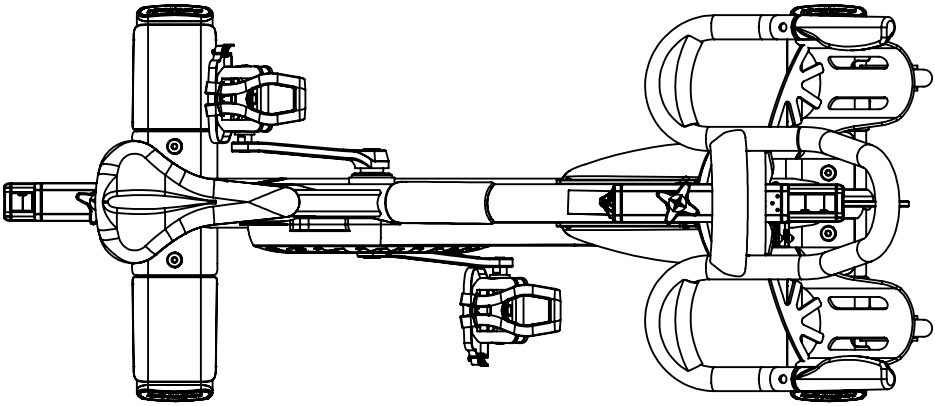


| REVISION HISTORY |           |   |       |    |
|------------------|-----------|---|-------|----|
| REV              | DATE      | DESCRIPTION   | ECO   | BY |
| A                | 7/25/2013 | PRODUCTION RELEASE  | 14303 | OT |
| B                | 5/7/2014  | REMOVE 000-0037 (OUTER CHAINGUARD), 000-0123 (INNER CHAINGUARD), 002-2787 (SLEEVE SPRING CLIP), ADD 740-8701 (OUTER GUARD), 740-8702 (INNER CHAIN GUARD), 050-1955 (WARNING LABEL), 120-3347 (SLIDER KNOB WASHER), 120-3346 (POP PIN WASHER), 000-0198 (HANDLEBAR PLUG) | 14666 | OT |



**DOCUMENT STATUS:**

NOTICE OF PROPRIETARY INFORMATION  
THIS DOCUMENT SHALL NOT BE REPRODUCED NOR SHALL THE INFORMATION CONTAINED HEREIN BE USED BY OR DISCLOSED TO OTHER EXCEPT AS EXPRESSLY AUTHORIZED BY CORE HEALTH & FITNESS, LLC.

| CLASS OF WORK | UNLESS OTHERWISE SPECIFIED DIMS ARE IN mm. TOLERANCES FOR MEASURE OF LENGTH ARE: |          |           |             |              |               |                |        | ANGLES = ±2° |
|---------------|--|----------|-----------|-------------|--------------|---------------|----------------|--------|--------------|
|               | 0.5 to 3   | > 3 to 6 | > 6 to 30 | > 30 to 120 | > 120 to 400 | > 400 to 1000 | > 1000 to 2000 | > 2000 |              |
| FINE          | ±0.05  | ±0.05    | ±0.1      | ±0.15       | ±0.2         | ±0.3          | ±0.5           | ----   |              |
| MEDIUM X      | ±0.1   | ±0.1     | ±0.2      | ±0.3        | ±0.5         | ±0.8          | ±1.2           | ±2     |              |
| COARSE        | ±0.2   | ±0.3     | ±0.5      | ±0.8        | ±1.2         | ±2            | ±3             | ±4     |              |
| VERY COARSE   | ----   | ±0.5     | ±1        | ±1.5        | ±2.5         | ±4            | ±6             | ±8     |              |

MATERIAL SEE BOM

FINISH N/A

VENDOR:

P/N:

| THIRD ANGLE PROJECTION |         |           |
|------------------------|---------|-----------|
|                        | INITIAL | DATE      |
| DRAWN                  | OT      | 7/25/2013 |
| CHECKED                |         |           |
| APPROVED               |         |           |
| U.O.M.                 | MM      |           |

**CORE HEALTH & FITNESS, LLC**  
4400 NE 77th Ave., Suite 300  
Vancouver, WA 98662

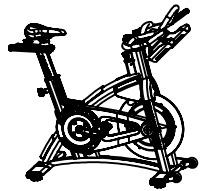
CORE PART NO **000-0166** REV **B**

TITLE **ASSY, BIKE, ACPP BELT**

SCALE: 1:50 | SHEET 1 OF 7 | SHEET SIZE: B

| ITEM NO. | PART NUMBER | DESCRIPTION                        | QTY. |
|----------|-------------|------------------------------------|------|
| 1        | 902-5550    | SCW-RHP M5x0.8x12 SS               | 6    |
| 2        | 002-2765    | SLEEVE, SEAT POST/HANDLEBAR ASSY   | 2    |
| 3        | 000-0107    | NUT, M6x1.0, SFL, SS               | 2    |
| 4        | 002-2265    | POP PIN ASSEMBLY, SCHWINN          | 2    |
| 5        | 000-0036    | SWEATGUARD, LEFT, ASSY             | 1    |
| 6        | 000-0035    | SWEATGUARD RIGHT ASSY              | 1    |
| 7        | 000-0111    | PLUG, 13.5MM                       | 3    |
| 8        | 740-8691    | PAD, STRETCH, ACPV TOP TUBE, ABS   | 2    |
| 9        | 000-0113    | PLUG, TENSION BOLT, RIGHT          | 2    |
| 10       | 000-0119    | STRETCH PAD, BOTTOM BRACE, ACPV    | 1    |
| 11       | 000-0135    | PAD, RUBBER, BRAKE BUMPER, SAC     | 1    |
| 12       | 001-0731    | M5 RIVNUT                          | 10   |
| 13       | 000-0019    | FRAME, ACPV, ASSY                  | 1    |
| 14       | 000-0043    | PAD, FEET PROTECTOR, WITH ADHESIVE | 2    |
| 15       | 001-0055    | STABILIZER REAR ALUMINUM WDMT      | 1    |
| 16       | 000-0136    | END CAP, STABILIZER                | 4    |
| 17       | 740-7656    | FEET, LEVELING, SPINNER            | 4    |
| 18       | 000-0137    | SCREW, PHT, M4 X 10,SS             | 8    |
| 19       | 001-0055    | STABILIZER, FRONT, ALUMINUM, WDMT  | 1    |
| 20       | 000-0141    | PAD, STABILIZER                    | 2    |
| 21       | 001-0688    | ASSEMBLY, TRANSPORT WHEEL          | 2    |
| 22       | 740-7097    | BOLT, WHEEL, NXT                   | 2    |
| 23       | 740-7187    | SCREW, M6X1.25X10, BHC, HE, SS     | 2    |
| 24       | 902-6065    | WSH-FLAT M8 REGULAR SS             | 4    |
| 25       | 000-0097    | SCHWINN QUALITY BADGE, 65 MM       | 1    |
| 26       | 000-0150    | HANDLEBAR ASSY, SAC                | 1    |
| 27       | 000-0085    | SEAT ASSEMBLY                      | 1    |
| 28       | 902-6065    | WSH-FLAT M8 REGULAR SS             | 8    |
| 29       | 902-4172    | NUT NL M10-1.5 SS                  | 4    |
| 30       | 902-5050    | SCW-BHCS M10x1.5x50 SS             | 4    |
| 31       | 003-5551    | FORK DECAL (PERFORMANCE)           | 1    |
| 32       | 000-0120    | STICKER, SERIAL NUMBER, ACPV2      | 1    |
| 33       | 000-0096    | SCHWINN QUALITY BADGE, 40 MM       | 1    |

| ITEM NO. | PART NUMBER | DESCRIPTION                           | QTY. |
|----------|-------------|---------------------------------------|------|
| 34       | 000-0172    | FLYWHEEL,ASSY,SAC BELT                | 1    |
| 35       | 003-1508    | ISIS BB, 68X113 MM                    | 1    |
| 36       | 002-2780    | LEFT CRANK ARM, ISIS                  | 1    |
| 37       | 000-0011    | PEDAL, SET, SCHWINN                   | 1    |
| 38       | 000-0170    | CRANK, PULLEY, ASM, SAC BELT          | 1    |
| 39       | 000-0168    | PULLEY, REAR, SAC BELT BIKE           | 1    |
| 40       | 000-0169    | CRANK ARM, DRIVE, 4 BOLT ISIS         | 1    |
| 41       | 740-7825    | WASHER, 8.4MM ID x 16MM OD x 1.6 THK  | 4    |
| 42       | 740-7167    | WASHER, LOCK, SPLIT, M6               | 4    |
| 43       | 731-0379    | SCREW,M8 X1.25,20mm,SHC,HK            | 4    |
| 44       | 80044       | CRANK BOLT 8MM HEX FOR ISIS           | 2    |
| 45       | 000-0171    | BELT, TIMING, GATES, 1440 8M          | 1    |
| 46       | 740-8702    | SAC CHAINGUARD INNER                  | 1    |
| 47       | 000-0102    | CHAIN TENSION BLOCK                   | 2    |
| 48       | 000-0106    | SCREW, M6x1.0x60, HHM, SS             | 2    |
| 49       | 000-0115    | COVER, CHAIN TENSIONER LEFT           | 1    |
| 50       | 000-0149    | SCREW, M5X0.8 X 12, TRUSS HEAD, SS    | 2    |
| 51       | 902-5550    | SCW-RHP M5x0.8x12 SS                  | 8    |
| 52       | 740-8701    | ASSY,CHAINGUARD,OUTER,SAC             | 1    |
| 53       | 000-0099    | SCREW, PHP, M5x0.8x25, SS             | 3    |
| 54       | 000-0100    | COVER, RIGHT DROP OUT                 | 1    |
| 55       | 000-0098    | BRAKE ADJMENT HOUSING ASSY            | 1    |
| 56       | 000-0124    | BRAKE ADJUSTMENT CAP                  | 1    |
| 57       | 001-0750    | ASSEMBLY, BRAKE CARRIAGE              | 1    |
| 58       | 902-5701    | SCW-SHCS M10-1.5x45 SS                | 1    |
| 59       | 003-8569    | TORSION SPRING, BRAKE                 | 1    |
| 60       | 902-4182    | NUT HEX M10 - 1.5 SS                  | 1    |
| 61       | 001-0535    | THREADED BRAKE ADJUSTMENT NUT         | 1    |
| 62       | 001-0540    | LINK, BRAKE ADJUSTMENT SIDE           | 2    |
| 63       | 001-0541    | BRONZE BUSHING, BRAKE ADJUSTMENT LINK | 4    |
| 64       | 902-4986    | SCREW, PHP, M4x0.7x10, SS             | 4    |
| 65       | 050-1955    | LABEL, WARNING, COMM, SPINNERS        | 1    |
| 66       | 740-8698    | DECAL, AC CARBON BLUE                 | 2    |

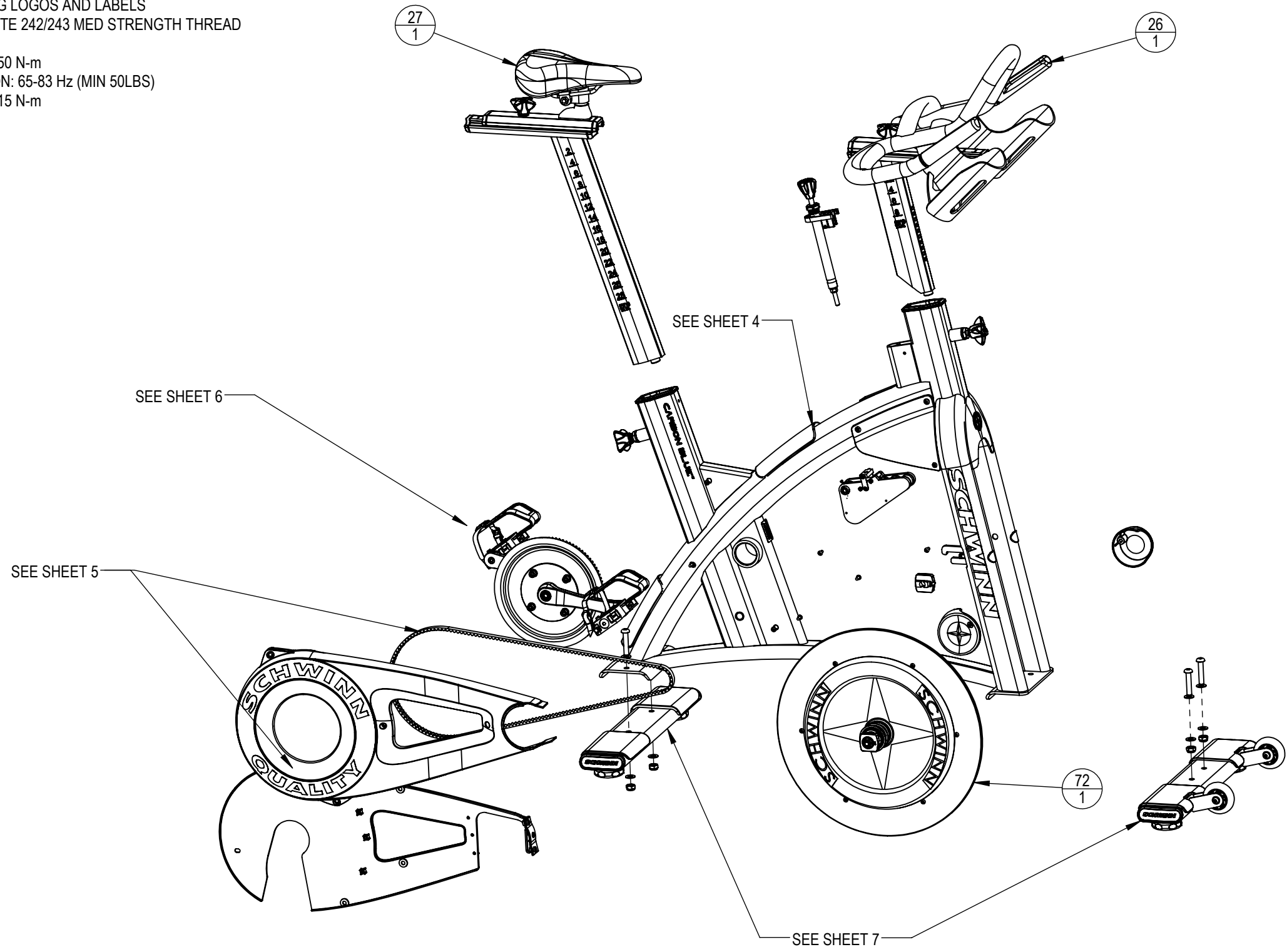


**CORE HEALTH & FITNESS, LLC**  
 4400 NE 77th Ave., Suite 300  
 Vancouver, WA 98662

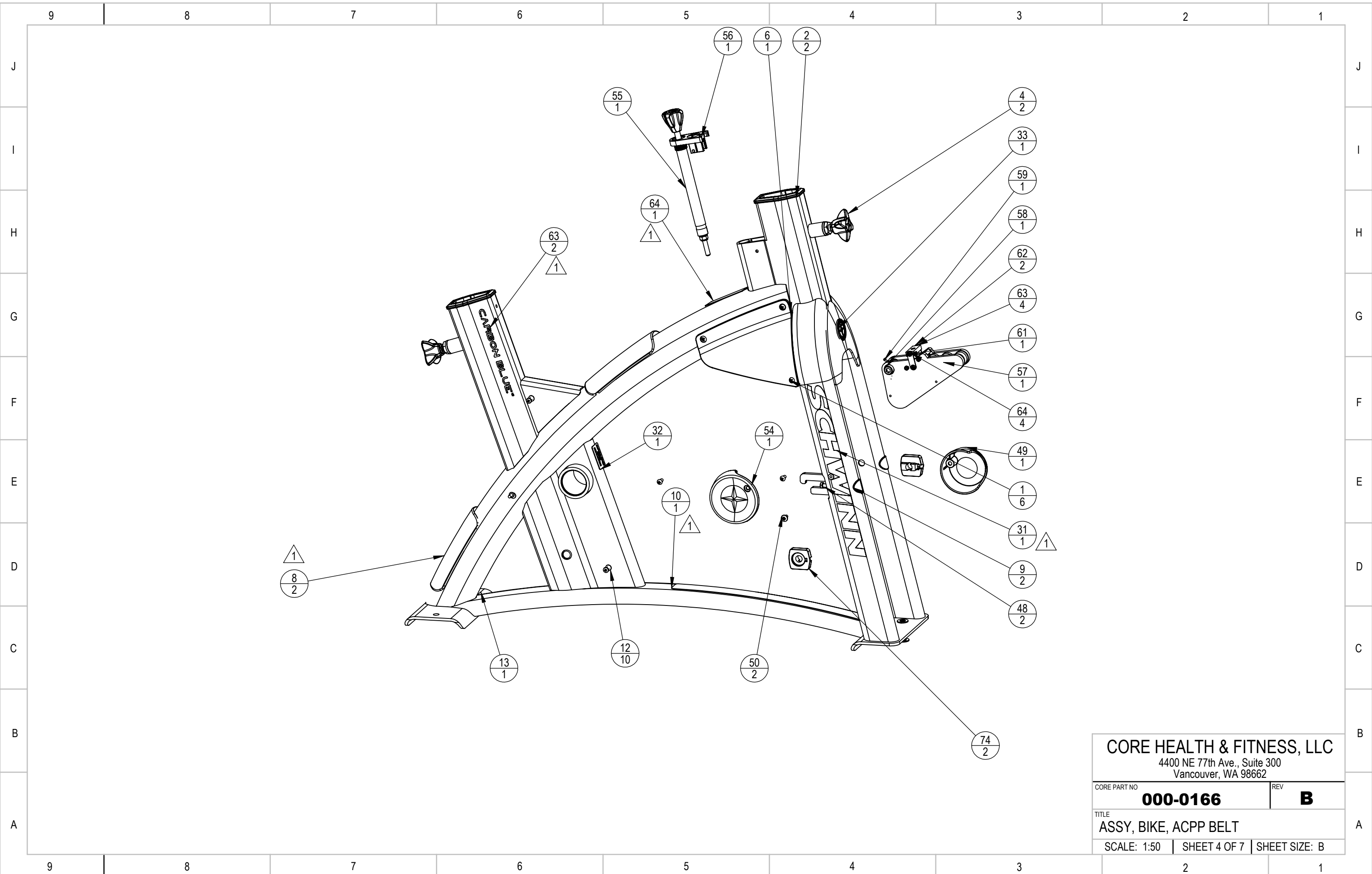
|              |                       |               |          |
|--------------|-----------------------|---------------|----------|
| CORE PART NO | <b>000-0166</b>       | REV           | <b>B</b> |
| TITLE        | ASSY, BIKE, ACPV BELT |               |          |
| SCALE: 1:50  | SHEET 2 OF 7          | SHEET SIZE: B |          |

NOTES:

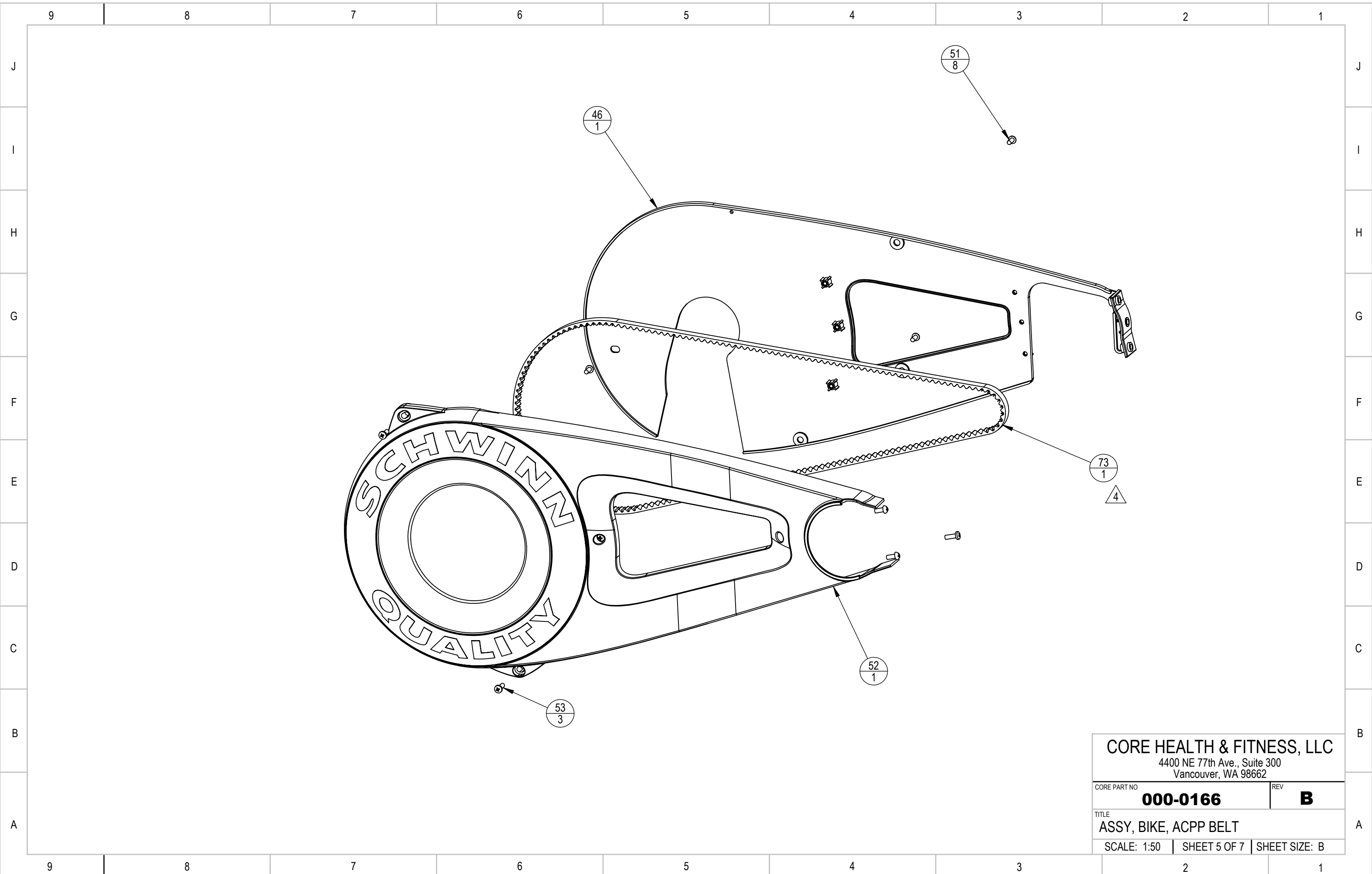
1. CLEAN AREAS WITH DENATURED ALCOHOL PRIOR TO ADHERING LOGOS AND LABELS
2. APPLY LOCTITE 242/243 MED STRENGTH THREAD LOCKER
3. TORQUE TO 50 N-m
4. BELT TENSION: 65-83 Hz (MIN 50LBS)
5. TORQUE TO 15 N-m



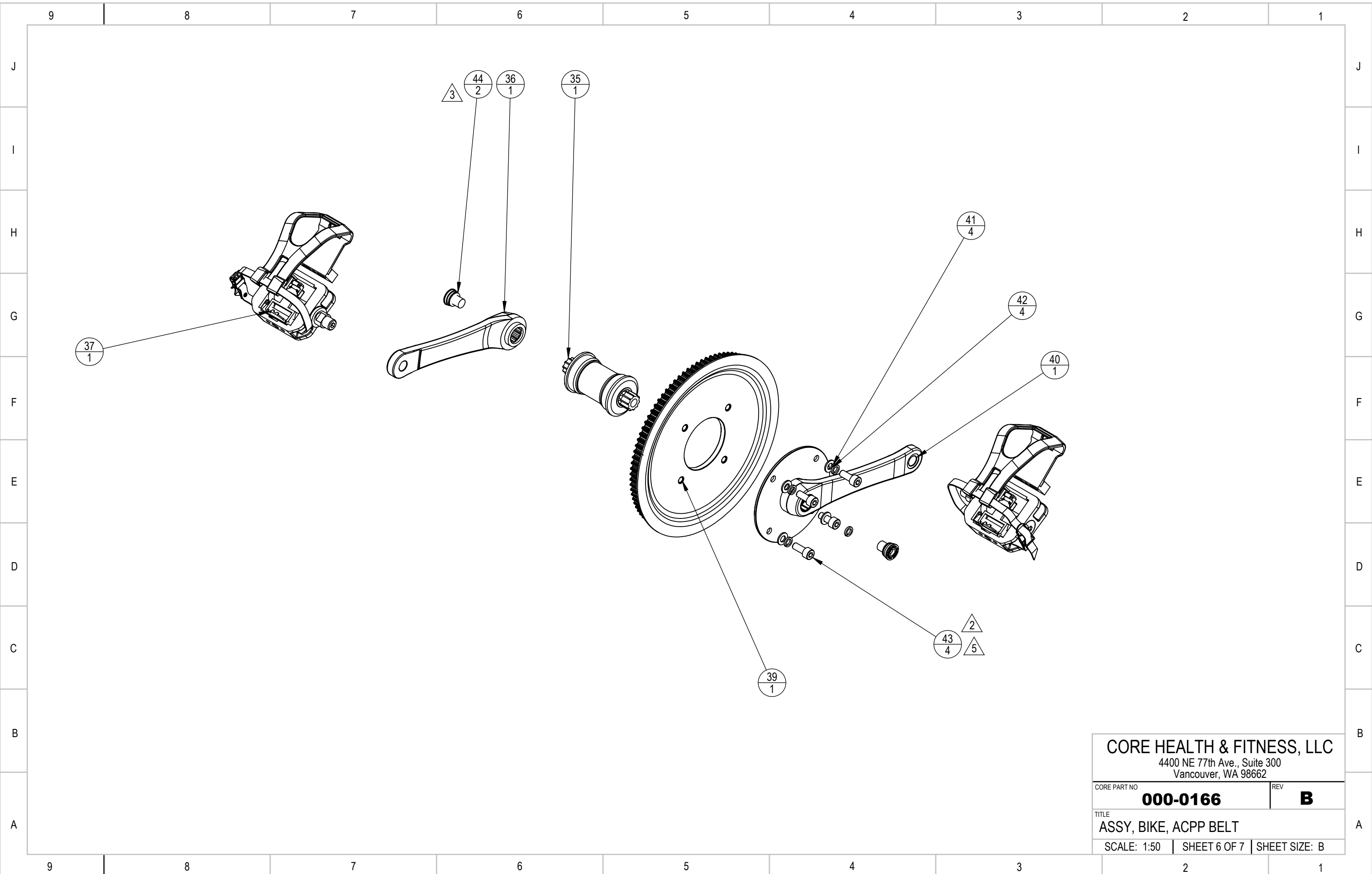
|   |                 |               |
|---|-----------------|---------------|
| CORE HEALTH & FITNESS, LLC<br>4400 NE 77th Ave., Suite 300<br>Vancouver, WA 98662 |                 |               |
| CORE PART NO  | <b>000-0166</b> | REV <b>B</b>  |
| TITLE<br>ASSY, BIKE, ACPP BELT  |                 |               |
| SCALE: 1:50   | SHEET 3 OF 7    | SHEET SIZE: B |



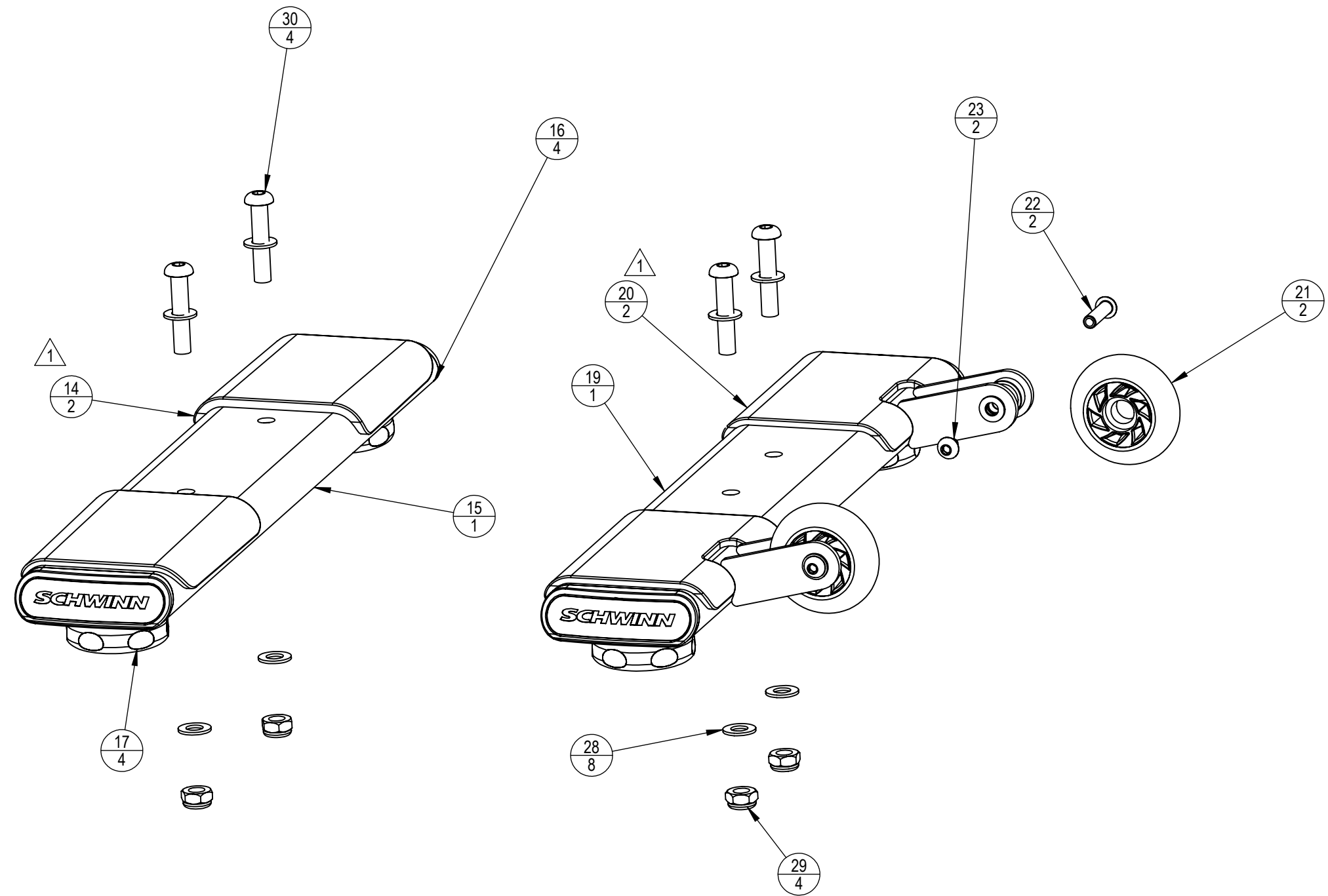
|  |                 |               |
|--|-----------------|---------------|
| <b>CORE HEALTH &amp; FITNESS, LLC</b><br>4400 NE 77th Ave., Suite 300<br>Vancouver, WA 98662 |                 |               |
| CORE PART NO   | <b>000-0166</b> | REV <b>B</b>  |
| TITLE<br><b>ASSY, BIKE, ACPP BELT</b>  |                 |               |
| SCALE: 1:50  | SHEET 4 OF 7    | SHEET SIZE: B |



|  |                 |               |
|--|-----------------|---------------|
| <b>CORE HEALTH &amp; FITNESS, LLC</b><br>4400 NE 77th Ave., Suite 300<br>Vancouver, WA 98662 |                 |               |
| CORE PART NO   | <b>000-0166</b> | REV <b>B</b>  |
| TITLE<br>ASSY, BIKE, ACPP BELT   |                 |               |
| SCALE: 1:50  | SHEET 5 OF 7    | SHEET SIZE: B |



|  |                 |               |
|--|-----------------|---------------|
| <b>CORE HEALTH &amp; FITNESS, LLC</b><br>4400 NE 77th Ave., Suite 300<br>Vancouver, WA 98662 |                 |               |
| CORE PART NO   | <b>000-0166</b> | REV <b>B</b>  |
| TITLE<br>ASSY, BIKE, ACPP BELT   |                 |               |
| SCALE: 1:50  | SHEET 6 OF 7    | SHEET SIZE: B |



|   |                 |               |
|---|-----------------|---------------|
| CORE HEALTH & FITNESS, LLC<br>4400 NE 77th Ave., Suite 300<br>Vancouver, WA 98662 |                 |               |
| CORE PART NO  | <b>000-0166</b> | REV <b>B</b>  |
| TITLE<br>ASSY, BIKE, ACPP BELT  |                 |               |
| SCALE: 1:50   | SHEET 7 OF 7    | SHEET SIZE: B |