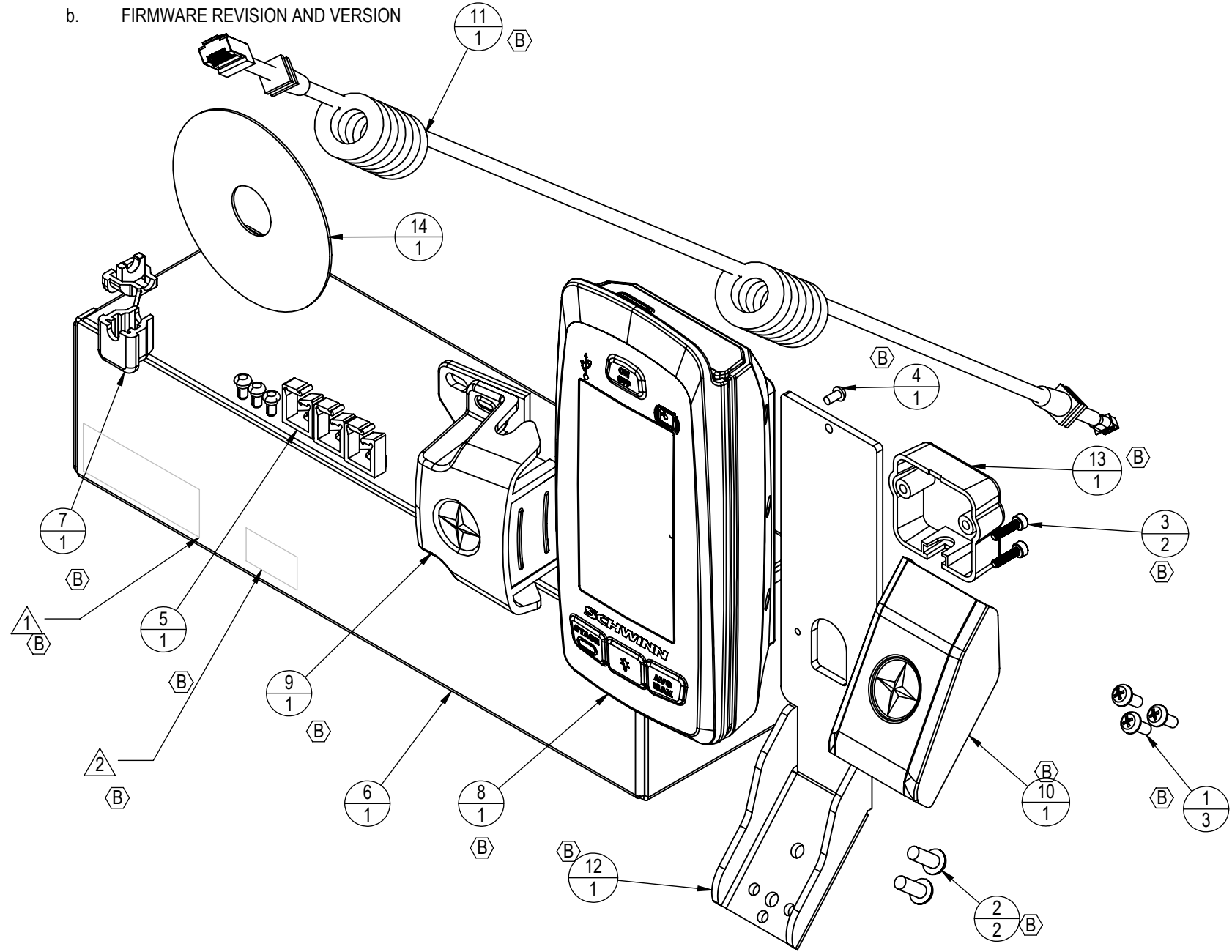


- NOTES:
- LABEL WITH:
    - CORE H&F PART NUMBER
    - DESCRIPTION
    - DATE OF MANUFACTURE
    - P/O NUMBER
    - VENDOR INFORMATION
  - LABEL WITH:
    - FIRMWARE P/N: 621-0065
    - FIRMWARE REVISION AND VERSION

REVISION HISTORY				
REV	DATE	DESCRIPTION	ECO	BY
A	3/19/2015	RELEASE	14728	OT
B	3/20/2015	WAS -003,-004,-007,-008,-021,-020, IS NOW ASSY <b>740-8925</b> . WAS -006 IS 740-8926. WAS -015 IS <b>740-8927</b> . WAS -018 IS <b>110-3643</b> . WAS -019 IS <b>740-8928</b> . WAS -022 IS <b>110-3640</b> . WAS -023 IS <b>110-3641</b> . AS -009 IS <b>740-8929</b> . WAS -024 IS 740-8930. WAS -026 IS <b>110-3642</b> . ADD <b>140-3585,740-8822</b>	14817	OT



ITEM NO.	PART NUMBER	DESCRIPTION	Default/QTY.
1	<b>110-3640</b>	SCREW, PHP, M4x0.7x10, SS	3
2	<b>110-3641</b>	SCW-BHCS M5x0.8x14 SS	2
3	<b>110-3642</b>	SCREW, M3X0.5,12mm, SHC, HK, SS,GR 8.8	2
4	<b>110-3643</b>	SCREW, M3X0.5,6mm,RHM,PH,SS	1
5	<b>140-3585</b>	KIT,WIRE SADDLE CLIP, ECH 2	1
6	<b>740-8727-016</b>	BOX, MPOWER Q	1
7	<b>740-8822</b>	SRB, MPOWER Q, RECTANGLE HOLE	1
8	<b>740-8925</b>	ASSY, SCHWINN ECHELON 2,COMPUTER	1
9	<b>740-8926</b>	SPEED SENSOR ASSY, WIRED	1
10	<b>740-8927</b>	COSMETIC CAP ASSY	1
11	<b>740-8928</b>	RJ45 2-PIN LONG CABLE	1
12	<b>740-8929</b>	MOUNT, M POWER Q	1
13	<b>740-8930</b>	SRB MOUNT, M POWER Q	1
14	740-8938	CD,OWNERS/INST MANUAL,ECH 2C7	1

**DOCUMENT STATUS:**

NOTICE OF PROPRIETARY INFORMATION  
 THIS DOCUMENT SHALL NOT BE REPRODUCED NOR SHALL THE INFORMATION CONTAINED HEREIN BE USED BY OR DISCLOSED TO OTHER EXCEPT AS EXPRESSLY AUTHORIZED BY CORE HEALTH & FITNESS, LLC.

CLASS OF WORK	UNLESS OTHERWISE SPECIFIED DIMS ARE IN mm. TOLERANCES FOR MEASURE OF LENGTH ARE:							ANGLES = ±2°
	0.5 to 3	> 3 to 6	> 6 to 30	> 30 to 120	> 120 to 400	> 400 to 1000	> 1000 to 2000	
FINE	±0.05	±0.05	±0.1	±0.15	±0.2	±0.3	±0.5	----
MEDIUM	±0.1	±0.1	±0.2	±0.3	±0.5	±0.8	±1.2	±2
COARSE	±0.2	±0.3	±0.5	±0.8	±1.2	±2	±3	±4
VERY COARSE	----	±0.5	±1	±1.5	±2.5	±4	±6	±8

MATERIAL SEE BOM

FINISH SEE BOM

VENDOR:

P/N:

THIRD ANGLE PROJECTION		
DRAWN	INITIAL	DATE
CHECKED		
APPROVED		
	U.O.M.	MM

**CORE HEALTH & FITNESS, LLC**  
 4400 NE 77th Ave., Suite 300  
 Vancouver, WA 98662

CORE PART NO: **740-8727** REV: **B**

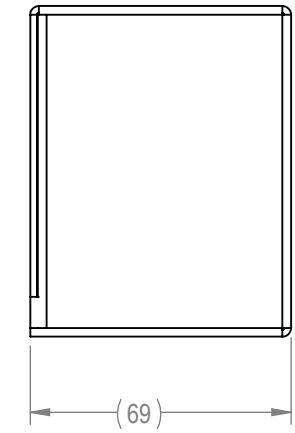
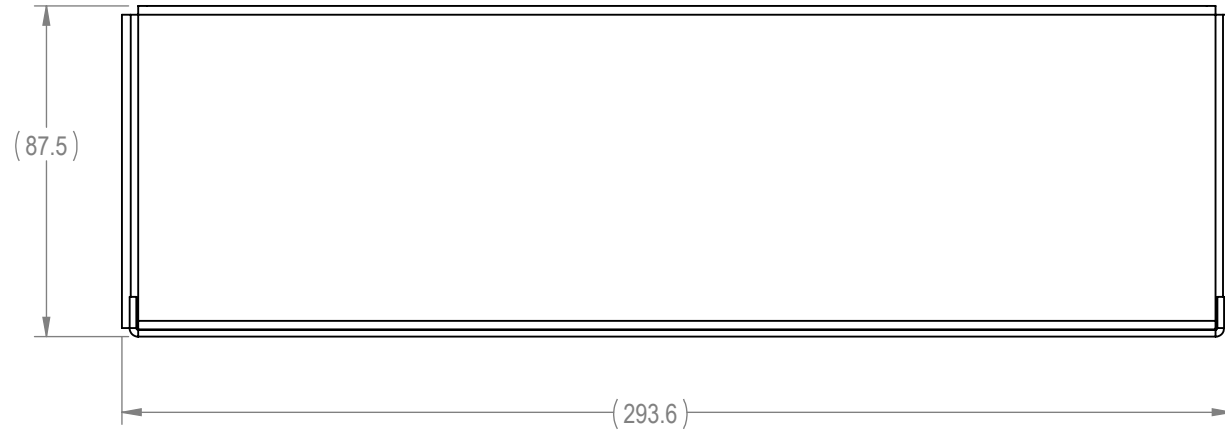
TITLE: **SCHWINN ECHELON 2**

SCALE: 1:2 | SHEET 1 OF 2 | SHEET SIZE: B

9 8 7 6 5 4 3 2 1

NOTES:

- 1. PART NUMBER: 740-8727-016
- 2. DESCRIPTION: BOX, MPOWER Q
- 3. MATERIAL: CORRUGATED PAPER BOARD



J  
I  
H  
G  
F  
E  
D  
C  
B  
A

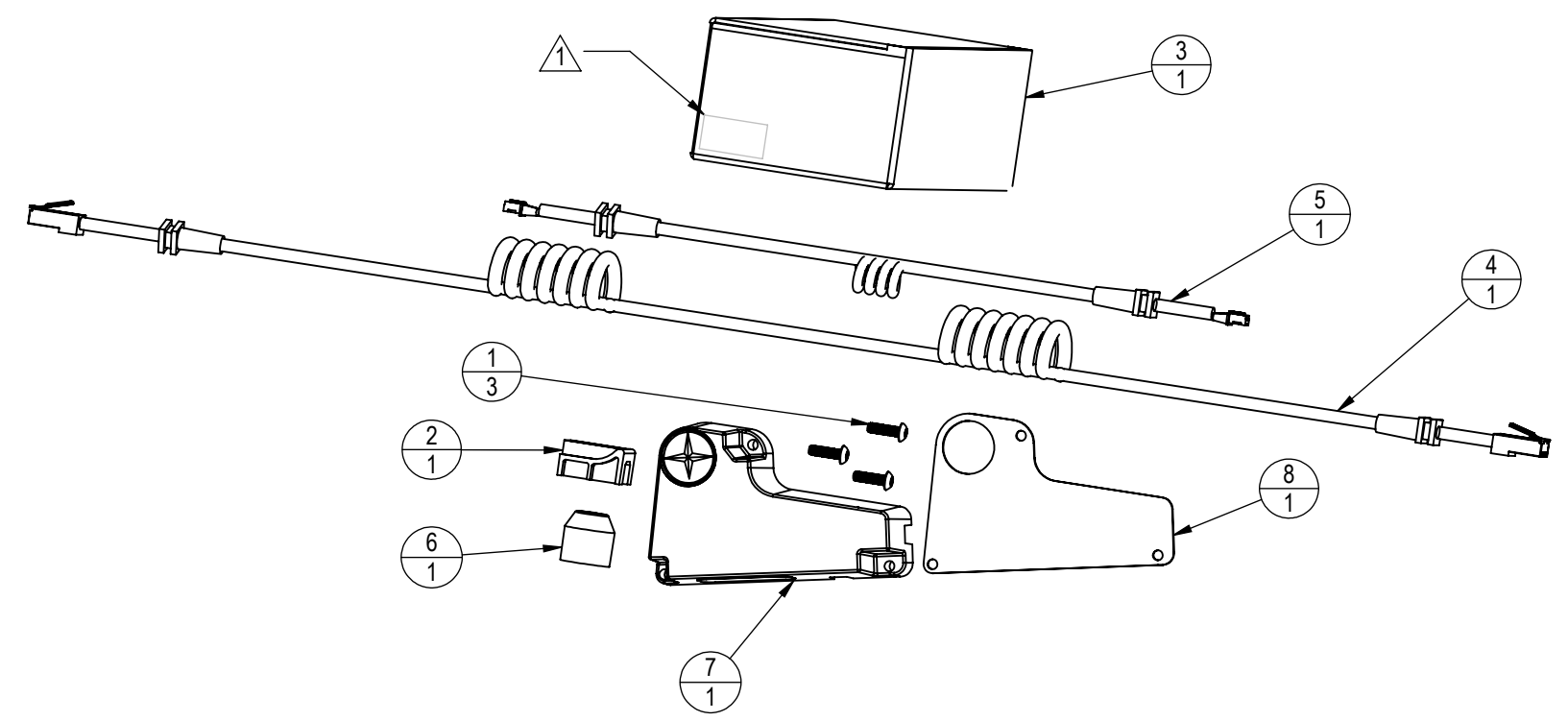
J  
I  
H  
G  
F  
E  
D  
C  
B  
A

CORE HEALTH & FITNESS, LLC 4400 NE 77th Ave., Suite 300 Vancouver, WA 98662		
CORE PART NO	<b>740-8727</b>	REV <b>B</b>
TITLE SCHWINN ECHELON 2		
SCALE: 1:2	SHEET 2 OF 2	SHEET SIZE: B

9 8 7 6 5 4 3 2 1

- NOTES:  
 1. LABEL WITH:  
 a. CORE H&F PART NUMBER  
 b. DESCRIPTION  
 c. DATE OF MANUFACTURE  
 d. P/O NUMBER  
 e. VENDOR INFORMATION

REVISION HISTORY				
REV	DATE	DESCRIPTION	ECO	BY
A	7/22/2014	RELEASE FOR QUOTATION	14728	OT
B	10/17/2014	ADD DIM TO RJ45 CABLE END, ADD DIM TO 2 PIN CABLE END, CHANGE MAG HOLDER, ADD CALIBRATION TOOL, CHANGE CASING AND SENSOR PCB ASSY	14817	OT



ITEM NO.	PART NUMBER	DESCRIPTION	QTY.
1	110-3644	SCREW, M4X0.7X14, BHSC,HE,SS	3
2	740-8607	CALIBRATION TOOL, ZERO POINT, ACPP	1
3	740-8730-005	POWER SENSOR UPGRADE PACKAGING	1
4	740-8931	POWER UPGRADE CABLE, RJ45	1
5	740-8932	2-PIN SHORT SPEED SENSOR CABLE	1
6	740-8933	ASSY, MAGNET, SENSOR, ECH 2	1
7	740-8934	ASSY, ECH2 POWER	1
8	740-8935	PAD,RUBBER,POWER SENSOR	1

**DOCUMENT STATUS:**

NOTICE OF PROPRIETARY INFORMATION  
 THIS DOCUMENT SHALL NOT BE REPRODUCED NOR SHALL THE INFORMATION CONTAINED HEREIN BE USED BY OR DISCLOSED TO OTHER EXCEPT AS EXPRESSLY AUTHORIZED BY CORE HEALTH & FITNESS, LLC.

CLASS OF WORK	UNLESS OTHERWISE SPECIFIED DIMS ARE IN mm. TOLERANCES FOR MEASURE OF LENGTH ARE:							ANGLES = ±2°
	0.5 to 3	> 3 to 6	> 6 to 30	> 30 to 120	> 120 to 400	> 400 to 1000	> 1000 to 2000	
FINE	±0.05	±0.05	±0.1	±0.15	±0.2	±0.3	±0.5	----
MEDIUM	±0.1	±0.1	±0.2	±0.3	±0.5	±0.8	±1.2	±2
COARSE	±0.2	±0.3	±0.5	±0.8	±1.2	±2	±3	±4
VERY COARSE	----	±0.5	±1	±1.5	±2.5	±4	±6	±8

MATERIAL SEE BOM

FINISH SEE BOM

VENDOR: N/A

P/N: N/A

THIRD ANGLE PROJECTION		
DRAWN	INITIAL	DATE
CHECKED		
APPROVED		
	U.O.M.	MM

**CORE HEALTH & FITNESS, LLC**  
 4400 NE 77th Ave., Suite 300  
 Vancouver, WA 98662

CORE PART NO: **740-8730** REV: **B**

TITLE: **SCHWINN ECHELON 2 POWER UPGRADE**

SCALE: 1:3 | SHEET 1 OF 1 | SHEET SIZE: B