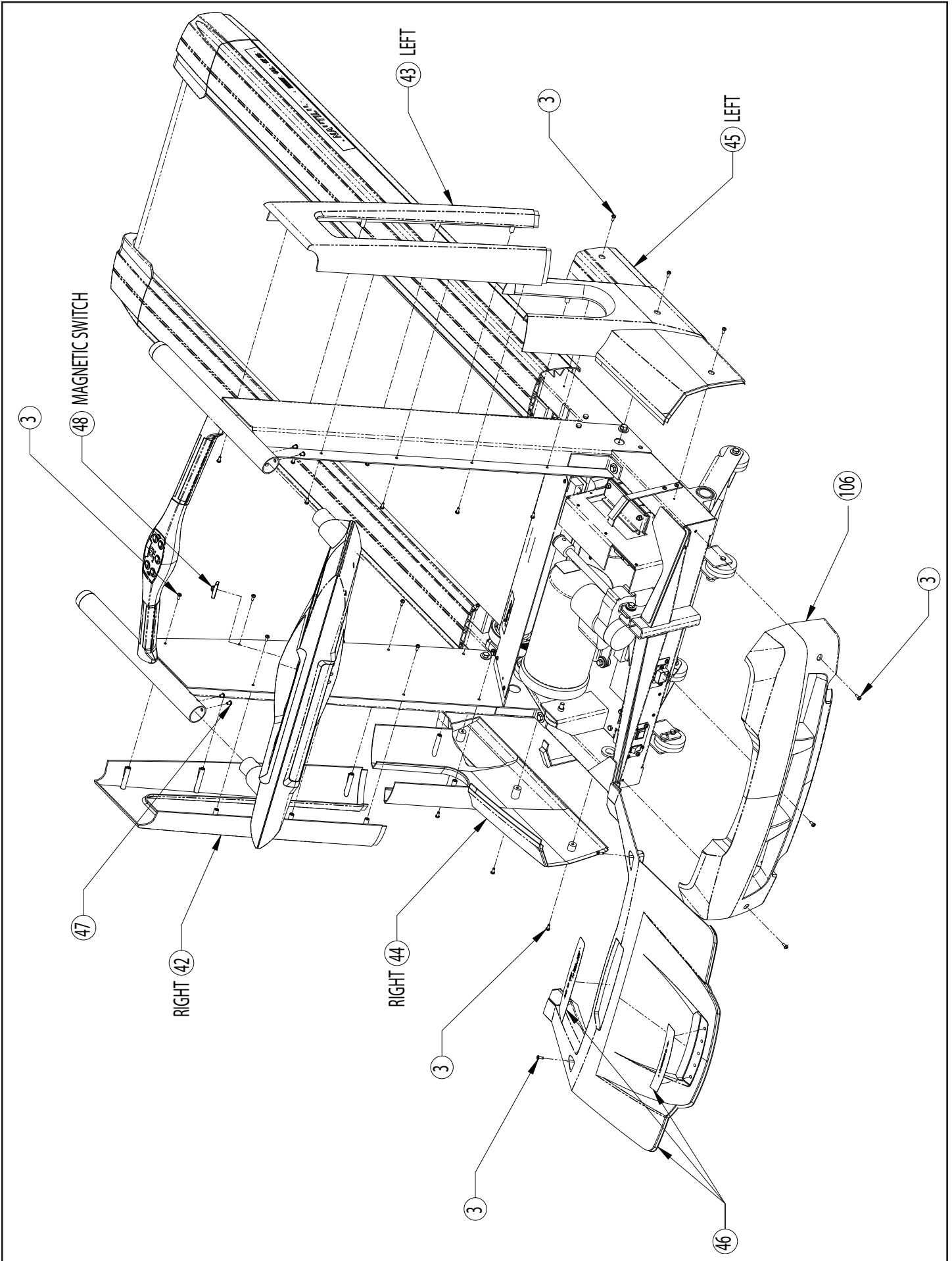
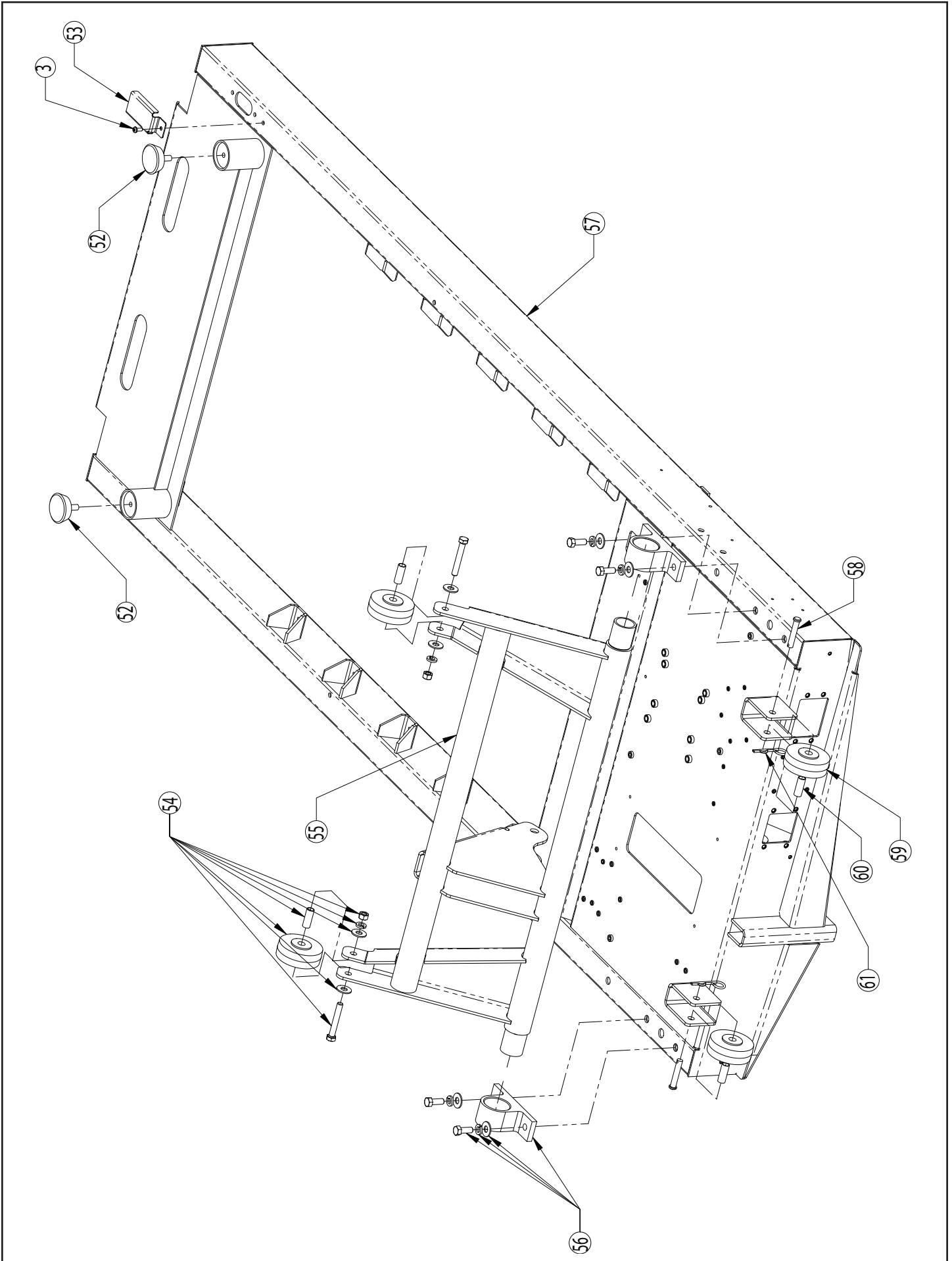


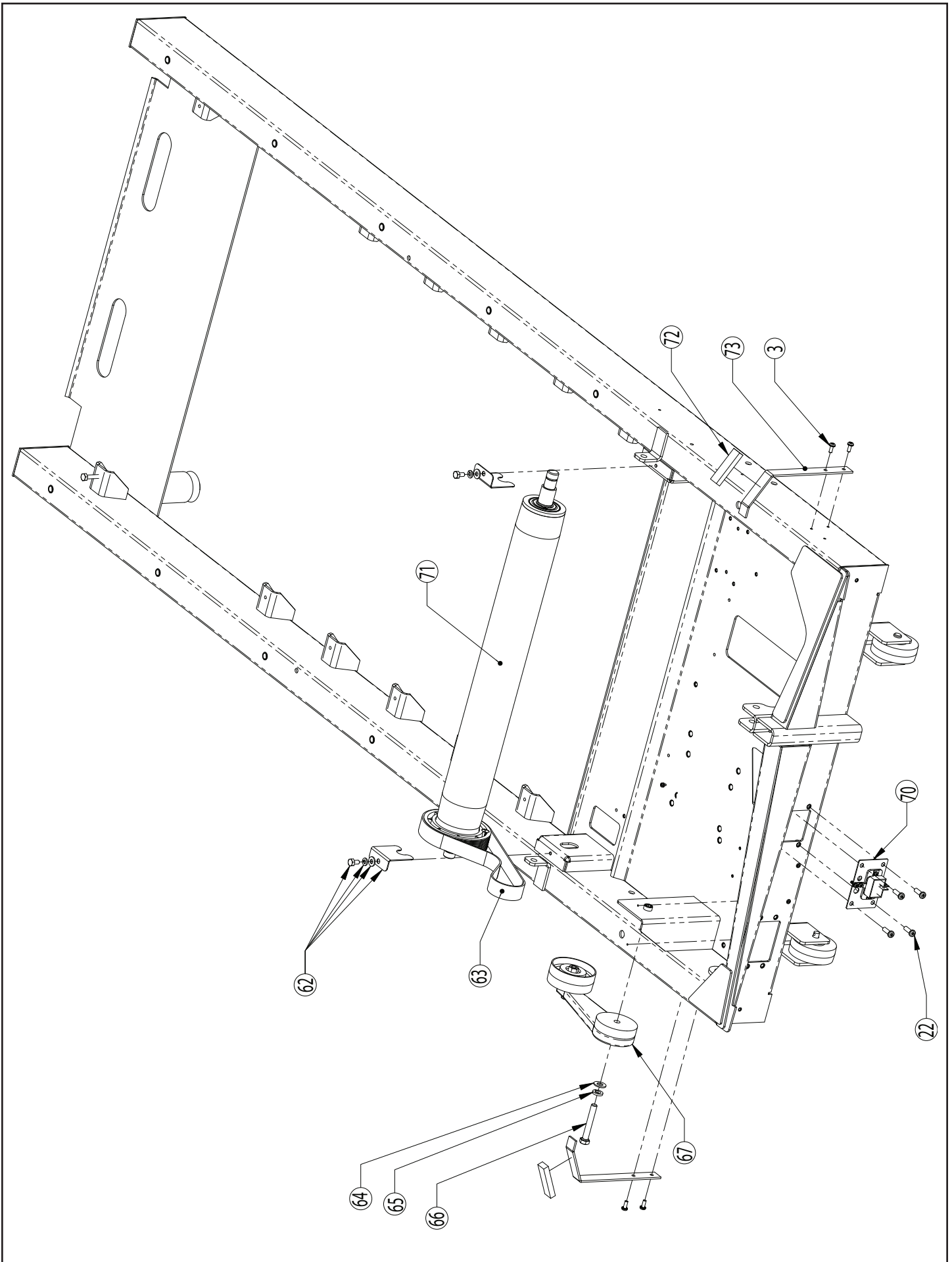
NAUTILUS, T916, TREADMILL



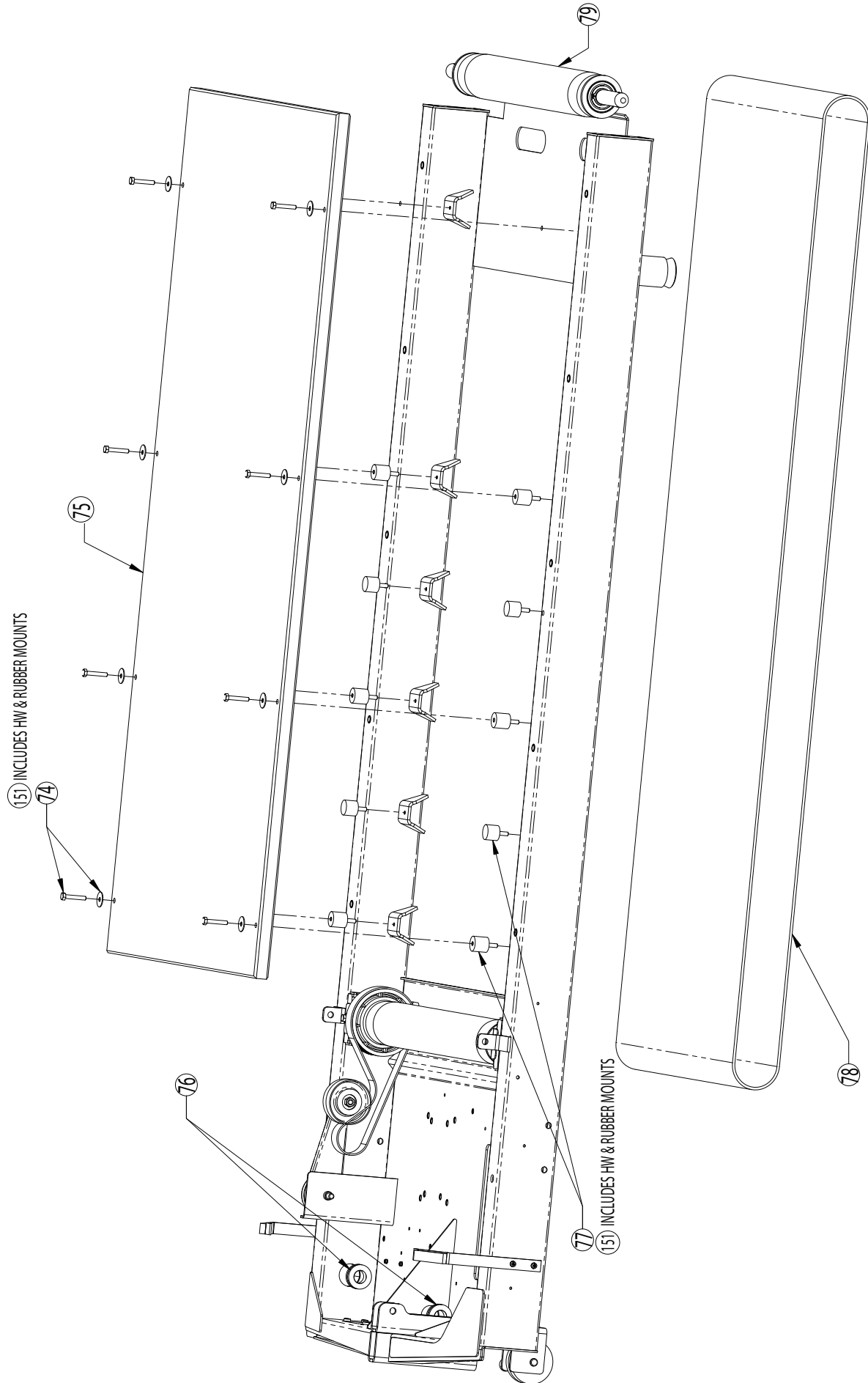
NAUTILUS, T916, TREADMILL



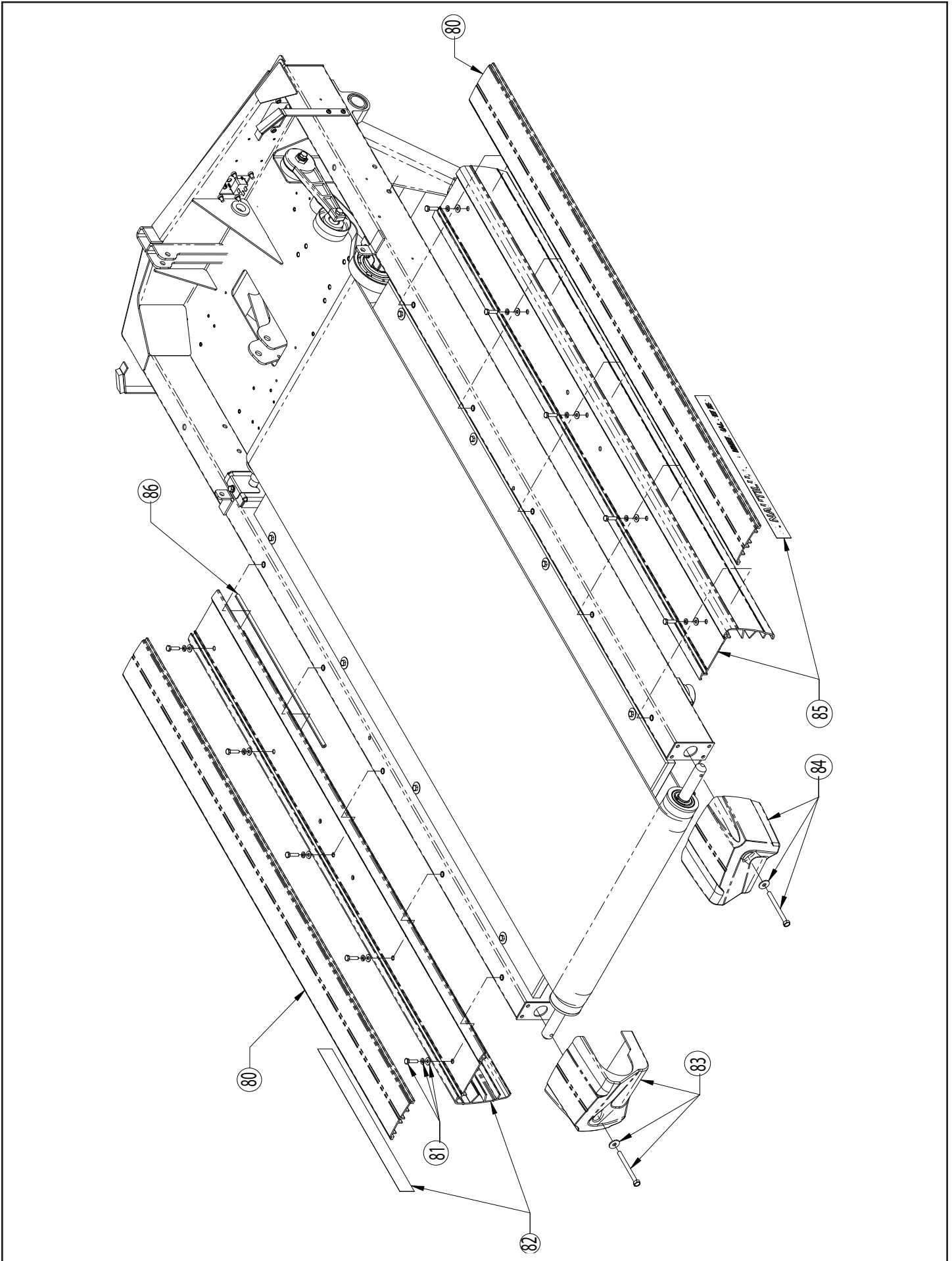
NAUTILUS, T916, TREADMILL



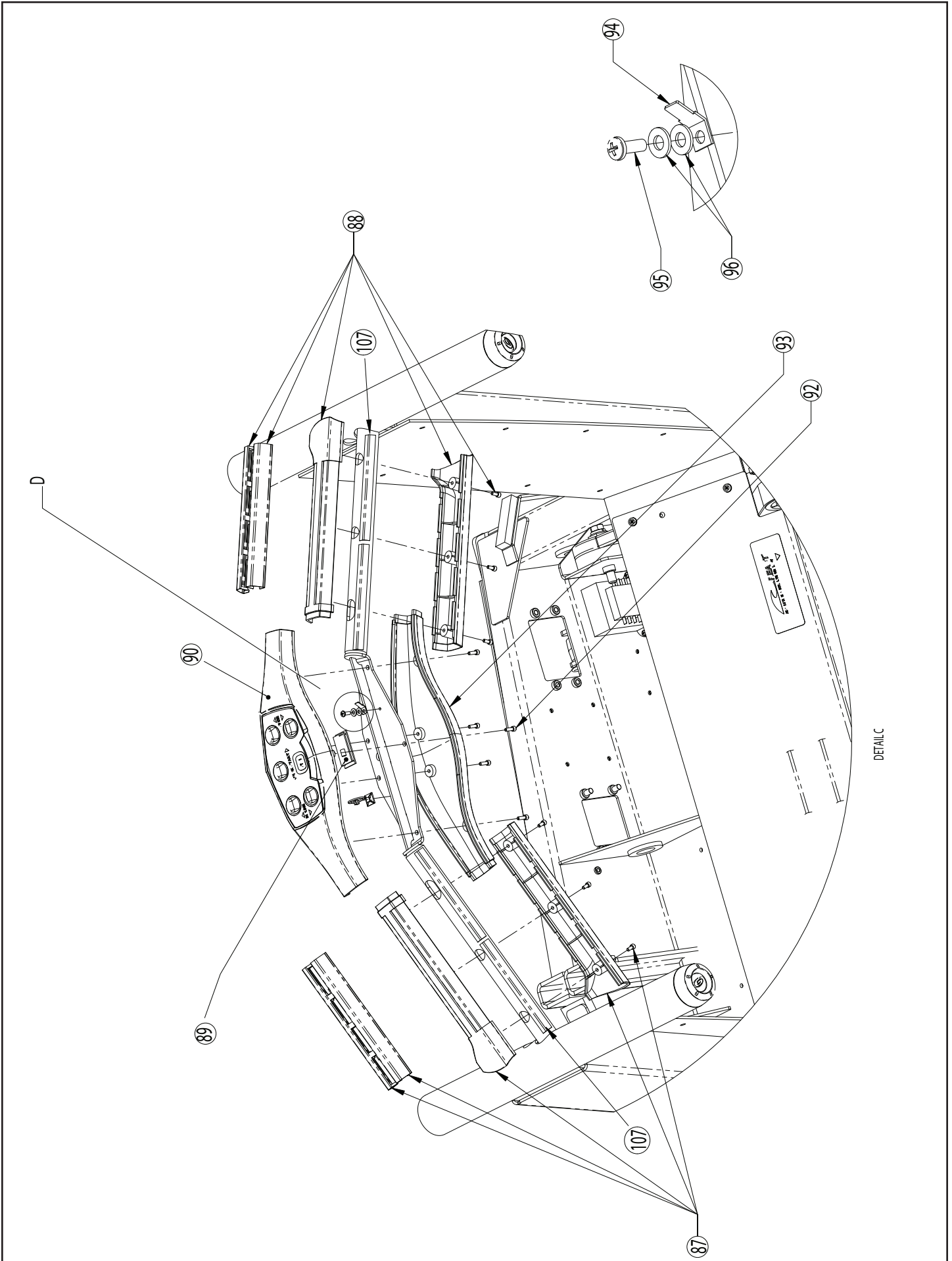
NAUTILUS, T916, TREADMILL



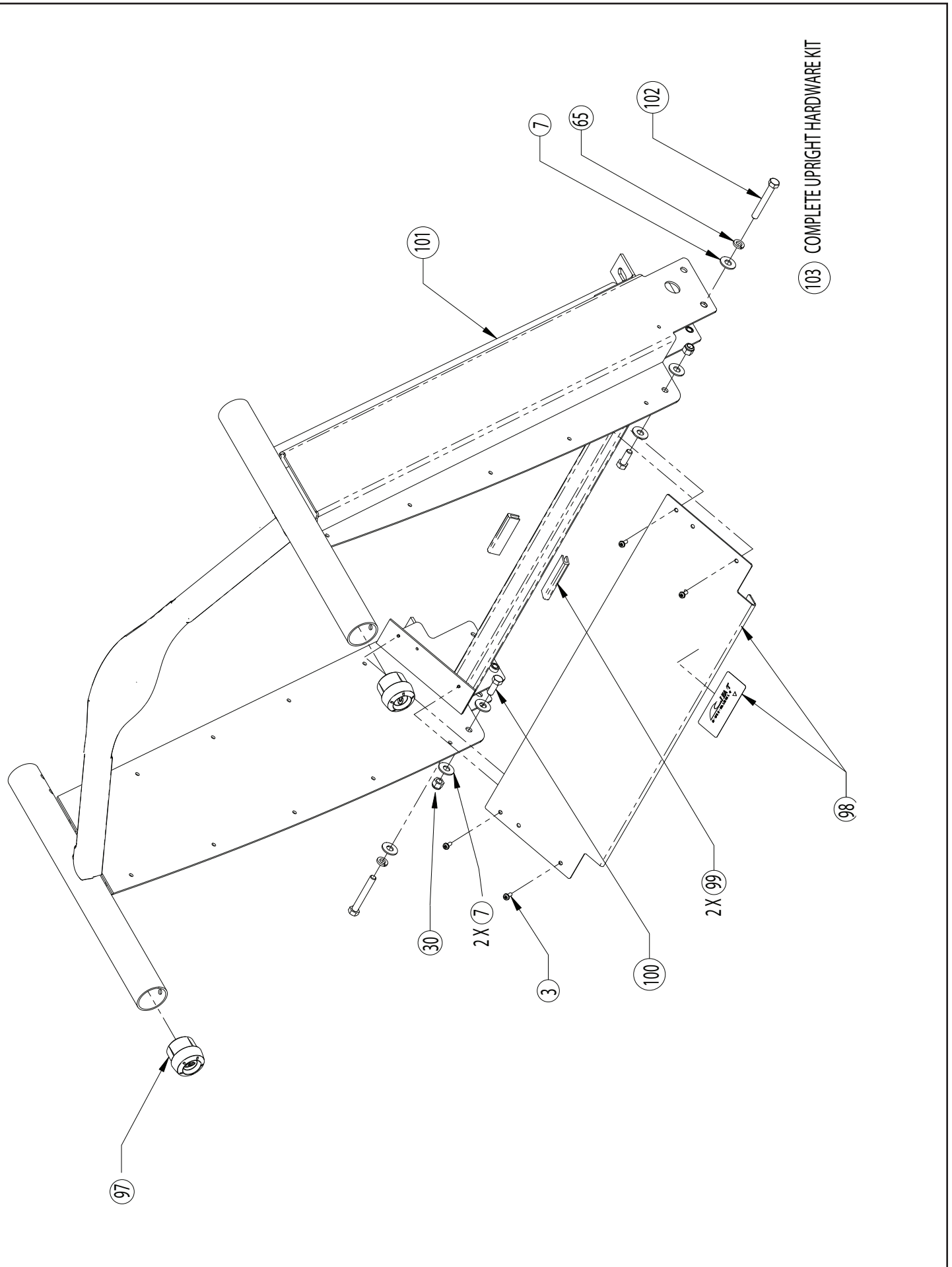
NAUTILUS, T916, TREADMILL



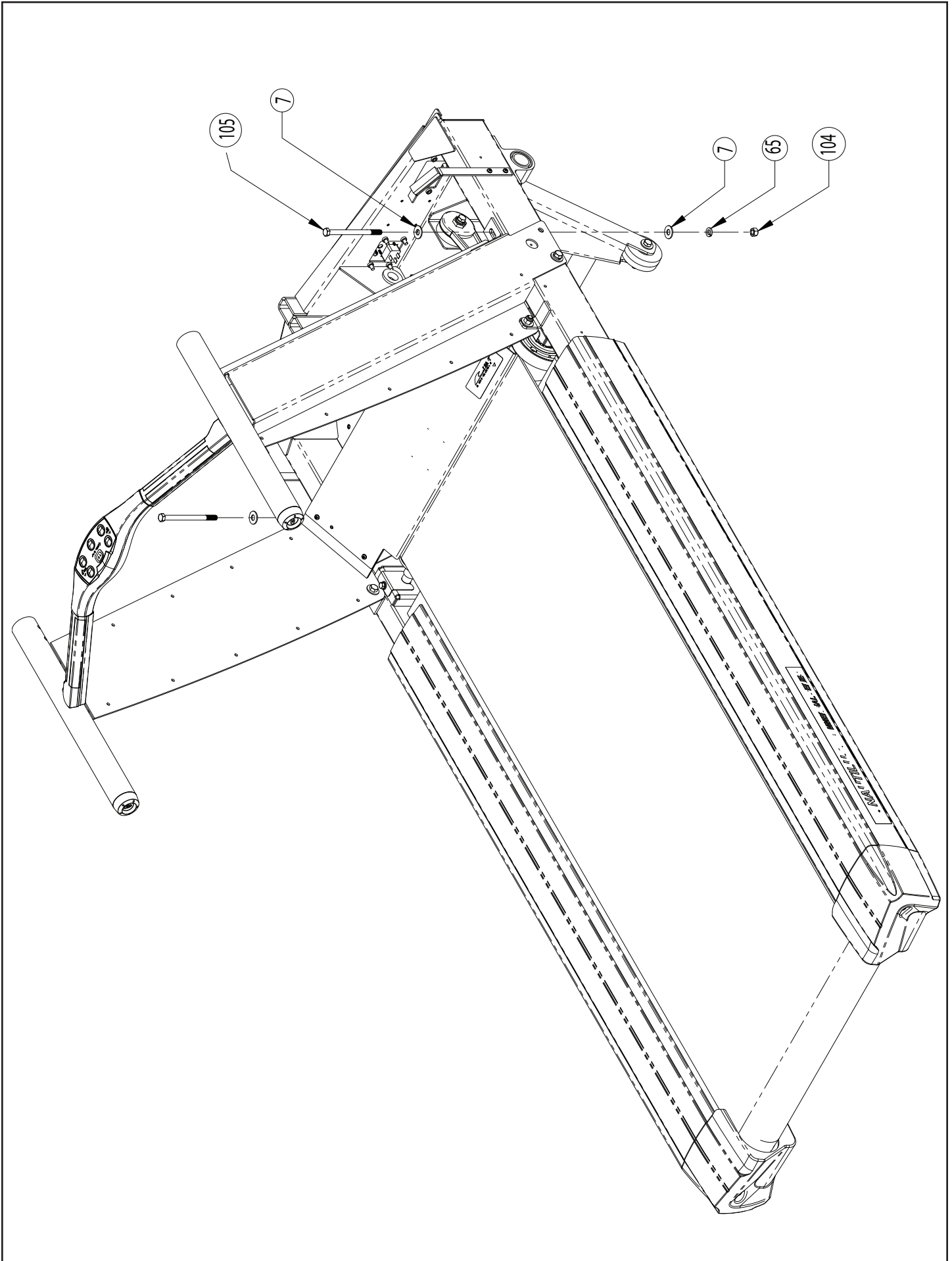
NAUTILUS, T916, TREADMILL



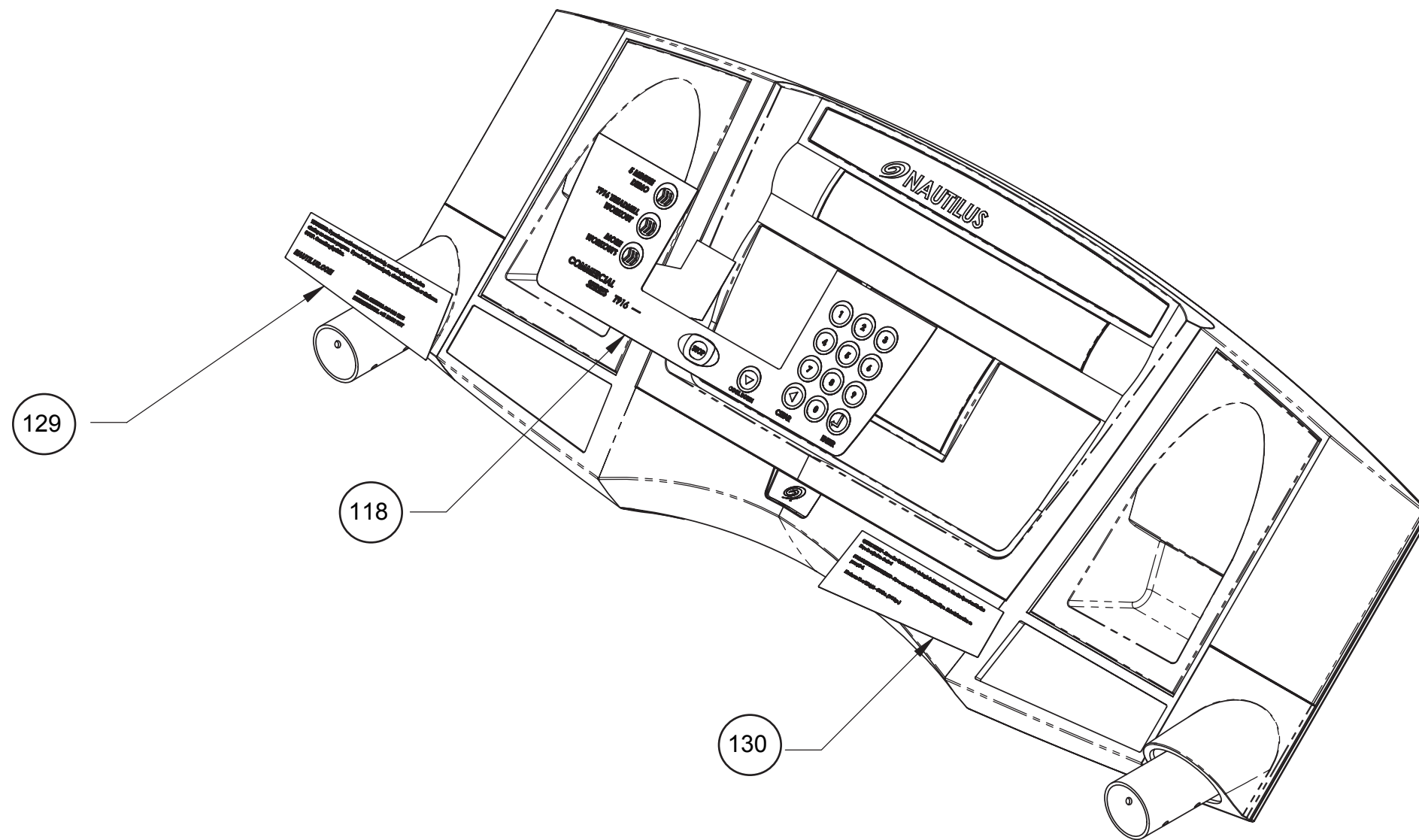
NAUTILUS, T916, TREADMILL



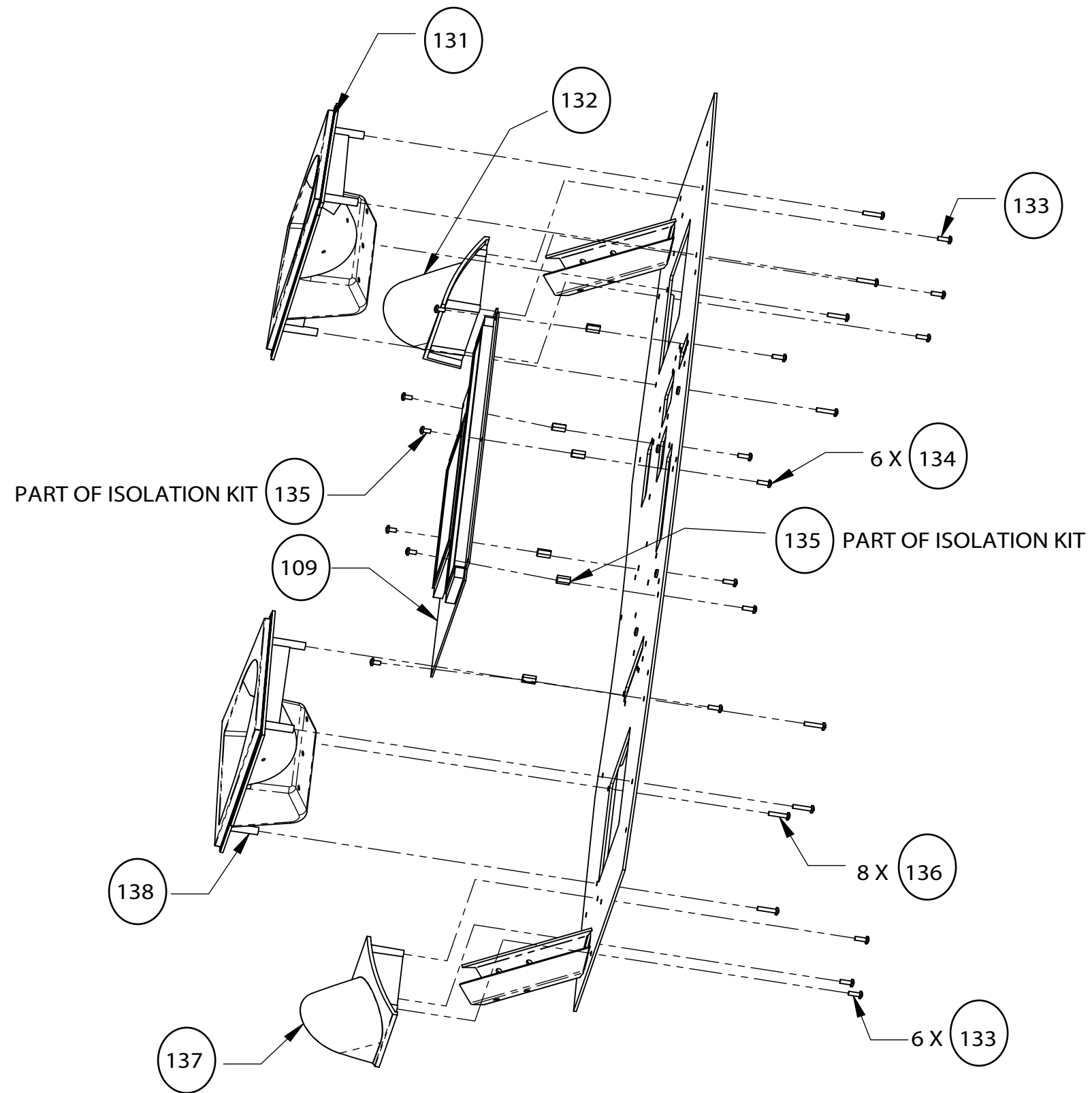
NAUTILUS, T916, TREADMILL



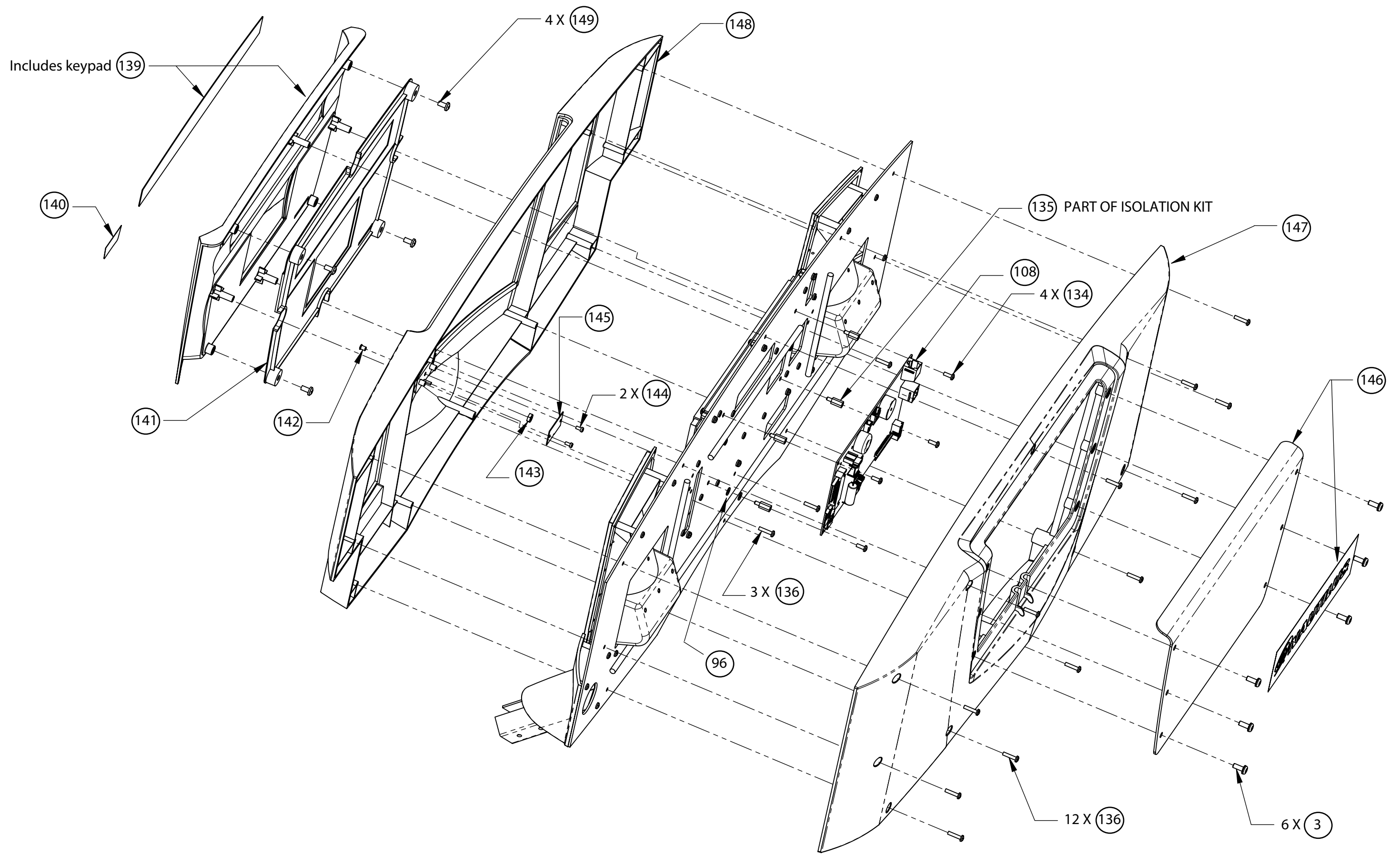
NAUTILUS, T916, TREADMILL



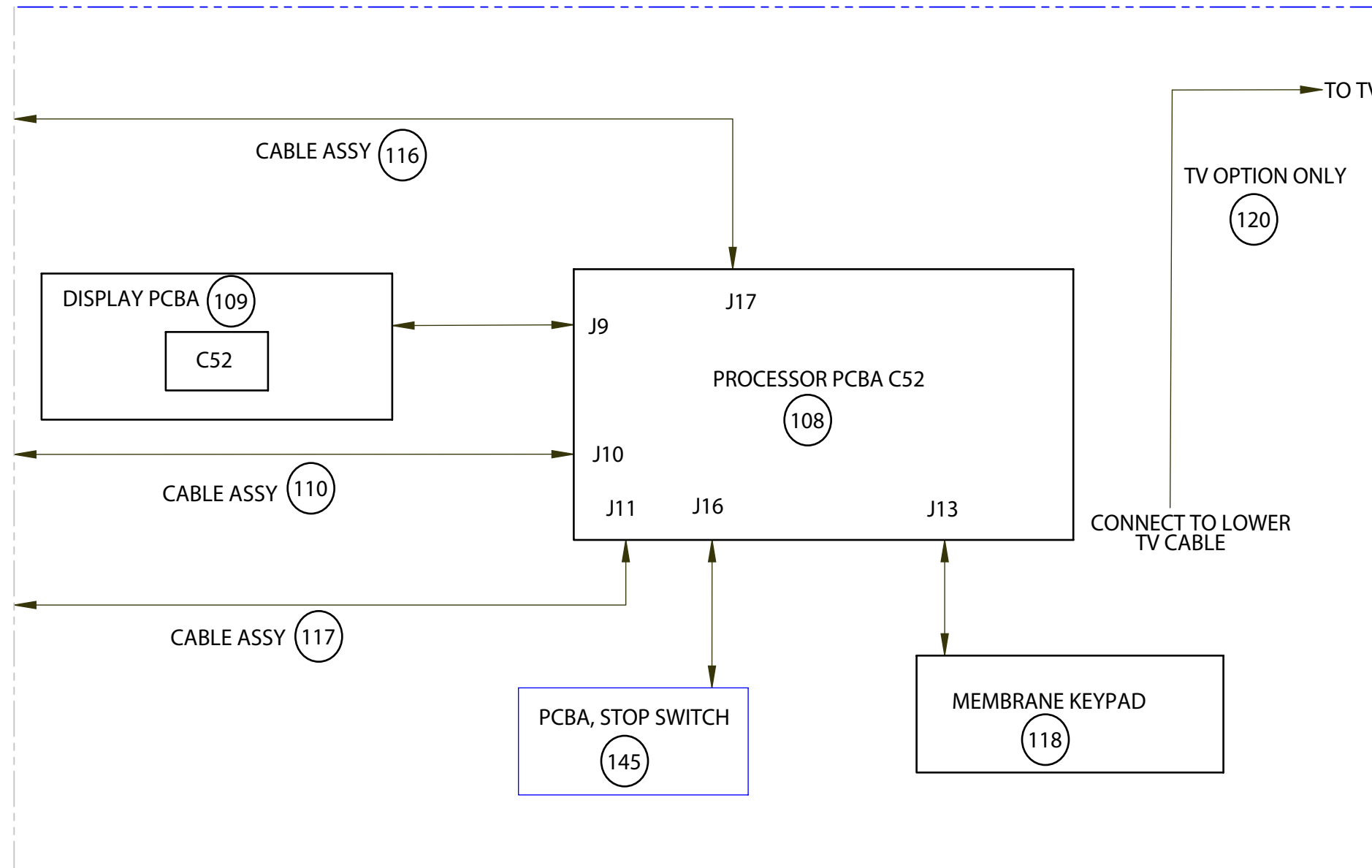
NAUTILUS, T916, TREADMILL



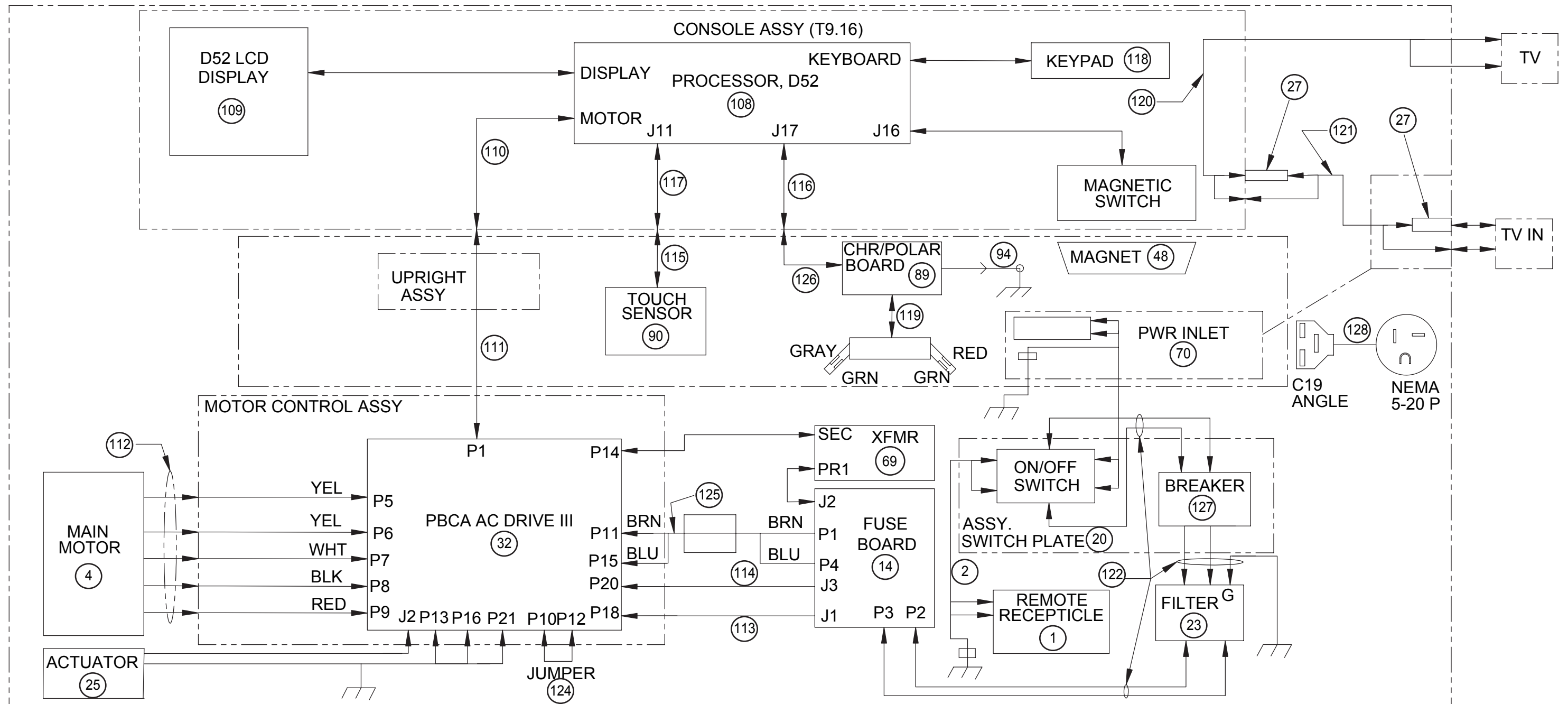
NAUTILUS, T916, TREADMILL



WIRING DIAGRAM CONSOLE ASSEMBLY

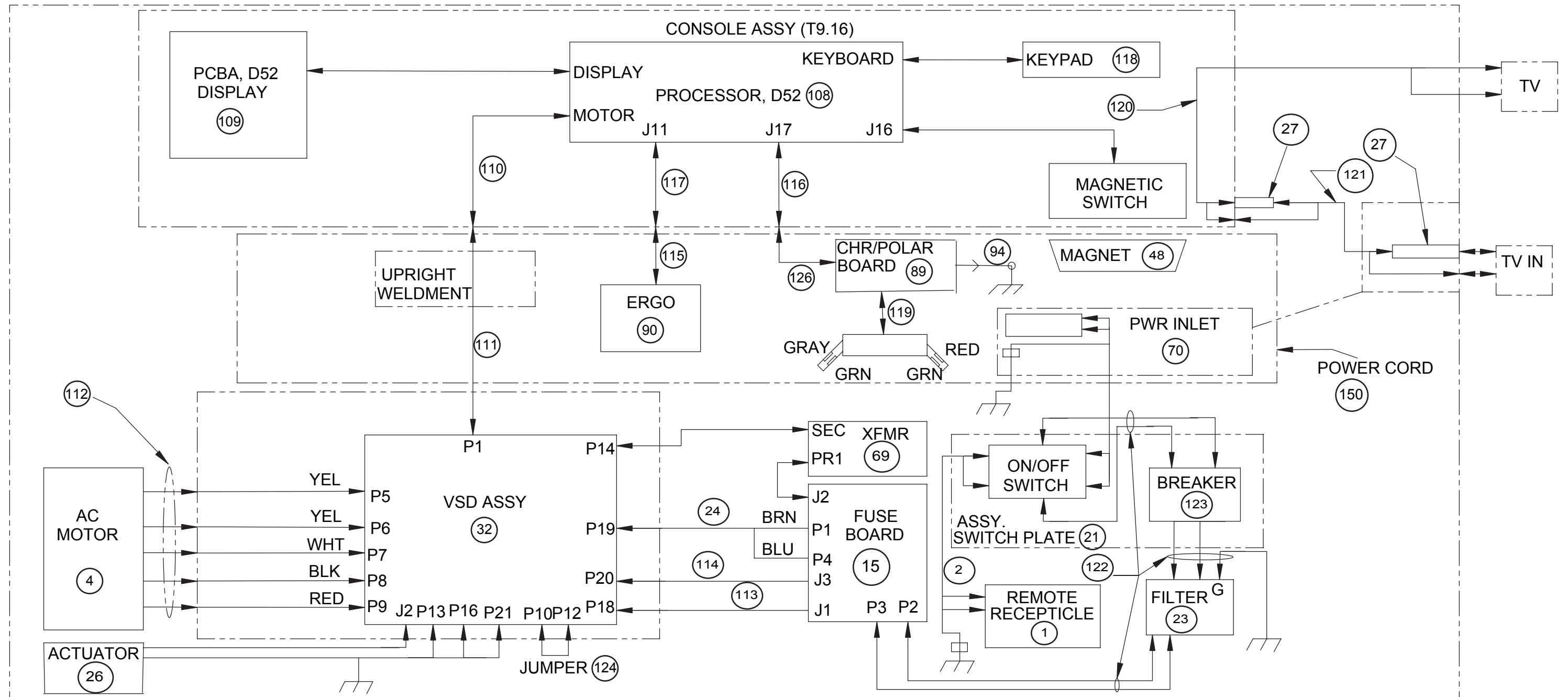


T9.16 110V DOMESTIC WIRING DIAGRAM



NOTE: ITEMS 27, 120 AND 127 ON SKU SM00080-004 ONLY

T9.16 220V-240V DOMESTIC WIRING DIAGRAM



NOTE: ITEMS 27, 120, AND 121 ON SKU SM00080-005 TV MODEL ONLY

T916, WBOM, SM0080-001,-002,-004,-005

REF	PART #	DESCRIPTION	REF	PART #	DESCRIPTION
1	SM41476	ASSY,PWR INLET REAR,C19	64	SM27585	WASHER,.406 X .812 X .065,FLAT
2	SM41190	ASSY,CABLE,REAR POWER	65	SM23729	WASHER, 3/8 SPLIT LOCK
3	SM41271	SCREW,#10-32 X .50,PAN HD, W/L	66	SM22016	SCREW,.375-16X2.50,HEX HD CAP
4	SM27487	DRIVE MOTOR,AC VARIABLE	67	SM27552	ROTARY TENSIONER
5	SM41060	SCREW, .312-18X1.50, HEX HD CP	68	SM27310	SCREW,M3 X 6,SEM,PHP,EXT STAR
6	SM22070	WASHER,.312 SPIT LOCK	69	SM27962	ASSY, TRANSFORMER, 2100 TRDMLL
7	SM22030	WASHER, 3/8 USS FLAT	70	SM41583	ASSY,POWER INPUT,T914/T916,120V
8	SM27586	SPACER,NYLON,.125X.500X1.120,	71	SM41009	ASSEMBLY,DRIVE ROLLER
9	SM27562	WASHER,NEOPRENE,.490X1.063X.09	72	SMQ36271-001	FOAM,PAD
10	SM22878	SCREW,SET,SOCKET,.250-28 X .38	73	SM41261	BRACKET,COVER SUPPORT
11	SM41059	FLYWHEEL, CAST,NTR 6000/7000	74	SM26405	KIT,DECK HARDWARE,SV
12	SM27441	WASHER,SHOULDER,ISOLATION	75	SM41330	DECK,22 INCH, 63"
13	SM40456	SCREW,6-32X.38,PAN HD W/LKWASH	76	SM41269	GROMMET, 2870, 7/8" ID
14	SMQ35774-002	PCBA, CONFIG PLATE 510/612	77	SM26404	KIT,COMPRESSION MOUNT SET,SV
15	SMQ36498-002	PCBA,TM VOLT CONFIG 230V 15%	78	SM41699	BELT,WALK,63"
16	SM41585	STANDOFF,1/4 HX,MALE-FEMALE,#6	79	SM41472	ASSY, REAR ROLLER, V2
18	SM22101	SCREW,.250-20X.50,HEX HD CAP	80	SM41334	EXTRUS,RUBBER,SIDE RAIL TOP,63
19	SM41260	WASHER,LOCK,.250 EXTERNAL TOOT	81	SM26408	KIT,HARDWARE,EXTRUSION SET,SV
20	SM41660	ASSY,SWITCH PLATE,T9.14-T9.16, 110V	82	SM41571	KIT,SIDERAIL,T916,LEFT
21	SM41608	ASSY,SWITCH PLATE,T914/916,220V	83	SM41475-00	KIT,ENDCAP,SIDERAIL,LEFT
22	SM40670	SCREW,1/4-20X.75,PAN HD,W/LOCK	84	SM41474-00	KIT,ENDCAP,SIDERAIL,RIGHT
23	SM27407	FILTER,NOISE,RFI	85	SM41572	KIT,SIDERAIL,T916,RIGHT
24	SM27073	HARNESS, POWER INPUT, 240V	86	SM22074	EDGE TRIM, RUBBER
25	SM26418	KIT,ELEVATION MOTOR,SV, 110V	87	SM26419	KIT,CONTACT PLATE,L,NTR
26	SM41289	ACTUATOR,LINEAR,230V	88	SM26420	KIT,CONTACT PLATE,R,NTR
27	SM17787	CONNECTOR,RF,3mm,F	89	SM41180	HEART RATE DETECTION MODULE,
29	SM22258	SCREW,.375-16x2.00,HEX HD CAP	90	SM26421	KIT,HOUSING,ERGO,CENTER,SV
30	SM22029	NUT,.375-16,NYLON INSERT	92	SM17957	SCREW,6-32 X 3/8,PH,PHIL,BLACK
32	SM41646	ASSEMBLY, VSD, T9.14, T9.16	93	SM41112	HOUSING,ERGO,BOTTOM CENTER
33	SM22139	SCREW,.250 X .50,SELF TAPPING	94	SM27000	FAST TAB, .250
34	SM22027	WASHER,.250 SPLIT LOCK	95	SM27764	SCREW, SELF TAPPING, #6x3/8
35	SM22047	WASHER,FLAT,1/4 ID X 5/8 OD	96	SMQ35920-004	WASHER,FLAT,ZINC,METRIC
36	SM41415	ASSY,HARNESS, GROUNDING	97	SM41158	END CAP,HANDLE BAR,MOLDED
40	SM41141	E-RING, EXTERNAL RETAINING	98	SM26427	KIT,KICK PLATE,SV
41	SM41124	PIVOT SHAFT,ELEVATION NUT	99	SM22076	EDGE TRIM, RUBBER, 3/4 X 15/32
42	SM26423	KIT,COVER,UPRIGHT,TOP,R,SV	100	SM22246	SCREW,.375-16x1.00,HEX HD CAP
43	SM26424	KIT,COVER,UPRIGHT,TOP,L,SV	101	SM41645	KIT,UPRIGT,WLDMNT,W/CBLS,T716/
44	SM41108	COVER,MOTOR,LOWER RIGHT	102	SM22196	SCREW,.375-16X2.75,HEX HD CAP
45	SM41099	COVER,MOTOR,LOWER LEFT	103	SM42600	KIT,HARDWARE,T7/T9,UPRIGHT,SV
46	SM41080	KIT,COVER,MOTOR,MAIN,T914/T916	104	SM22077	NUT, 3/8-16 NC FINISH HEX
47	SM24162	SCREW,1/4-20X3/8",BUTTON HD SO	105	SM41532	SCREW,3/8-16 X 5, HH, G2
48	SM41154	ASSY, MAGNETIC SWITCH	106	SM41513	COVER,MOTOR,FRONT
52	SM41232	LEVELING PAD, NTR	107	SM41212	ADHESIVE,TRANSFER TAPE,25 MIL
53	SM41262-05	BRACKET,POWER INLET COVER	108	SM40824-2	KIT, PCBA, DISPLAY, T916,TC916
54	SM26402	KIT,WHEEL ASSY,SV	109	SM40865	PCB ASSY, D52 DISPLAY
55	SM26401	KIT,GRADE WELDMENT ASSY,SV	110	SM27952	ASSY., CABLE, Upper C50 TM COM
56	SM26403	KIT,BEARING ASSY,IGUS,SV	111	SM27951	ASSY., CABLE, LOWER C50 TM COM
57	SM41644	WELDMENT,FRAME 63" DECK	112	SM17550	EXTENSION,HARNESS,MOTOR/THERMO
58	SM41259	PIN,CLEVIS, 3/8" DIA. X 2" LG	113	SMQ35986-001	HARNESS ASSY, GRADE POWER
59	SM27551	510/612 POLYOLEFIN WHEEL	114	SM27959	HARNESS ASSY, CONFIGURATION
60	SM41129-05	BUSHING,SPANNER,NTR	115	SM41193	ASSY,CABLE,ROC KEYS
61	SM21774	PIN,HITCH	116	SM41442	CABLE,ASSY,T9,HR,PROCESS SIDE
62	SM26406	KIT,BRACKET,FRONT ROLLER,SV	117	SM41173	CABLE ASSY,ROC KEYS CONSOLE
63	SM27458	POLY-V DRIVE BELT, 280J10	118	SM41460	KEYPAD,CONSOLE,T9.16,D52

T916, WBOM, SM0080-001,-002,-004,-005

REF	PART #	DESCRIPTION	PARTS NOT FOUND ON DRAWING	
119	SM41169	CABLE ASSY,CONTACT HR PADS	NS	002-0521 KIT,CONNECTOR,LOCK,T914/T916
120	SM17846	ASSY,HARNESS,UPPER CONS TV CAB	NS	SM41281 MANUAL,CD,T9 SERIES
121	SM17847	ASSY,HARNESS,TV/PWR,T914/T916,	NS	SM41282 INSTRUCTIONS,ASSY,T9 SERIES TM
122	SM27404	ASSY,HARNESS,CIRCUIT BREAKR,QD		
123	SM27308	CIRCUIT BREAKER,ME,220V, 10A		
124	SM27122	ASSY,HARNESS,JUMPER,MALE,QD		
125	SMQ35982-002	HARNESS ASSY, AC		
126	SM41443	CABLE,ASSY,T9,HR,MODULE SIDE		
127	SM27319	CIRCUIT BREAKER,ME, 110V, 20A		
128	SM41319	CORDSET,PWR,ANGLE,C19LA 5-20P,110V		
129	SM41275	DECAL,CONSOLE,LOWER LEFT,T9.12		
130	SM41461	DECAL,CONSOLE,LOWER RIGHT,T916		
131	SM41073	CUP HOLDER, LEFT		
132	SM41089	COVER,HAND RAIL JUNCTION,LEFT		
133	SM22275	SCREW,#6 THREAD FORM X.38 PHIL		
134	SM22014	SCREW,#6-32NC X 3/8" PHIL RD H		
135	SM17952	KIT,CNSL,DISPLAY PCB ISOL,T9		
136	SM22276	SCREW,#6 S.T. X .625 HEX OR TO		
137	SM41088	COVER,HAND RAIL JUNCTION,RIGHT		
138	SM41074	CUP HOLDER, RIGHT		
139	SM41659	ASSY,KEYPAD/BEZEL,CONSOLE,T916		
140	000-4832	DECAL,CONSOLE LOGO		
141	SM17715	LENS, CONSOLE		
142	SM41135	STUD, SELF CLINCHING		
143	SM22110	NUT,#8-32,HEX MACH		
144	SM27769	SCREW, #6 SELF TAPPING, .250		
145	SM40854	PCB ASSY,TM MAGNET SENSOR		
146	SM41081	PANEL,CNSL ACCESS,W/DECAL		
147	SM41086	HOUSING,CONSOLE REAR		
148	SM41101	HOUSING, CONSOLE FRONT		
149	SM17684	SCREW,#10-32 X .375,PH,PHIL,SS		
150	SM17566	CORDSET,PWR,ANGLE,8',STRAIGHT,220V		
151	SM41593	KIT,T7/T9,COMPRESSION DECK MOUNTS		