

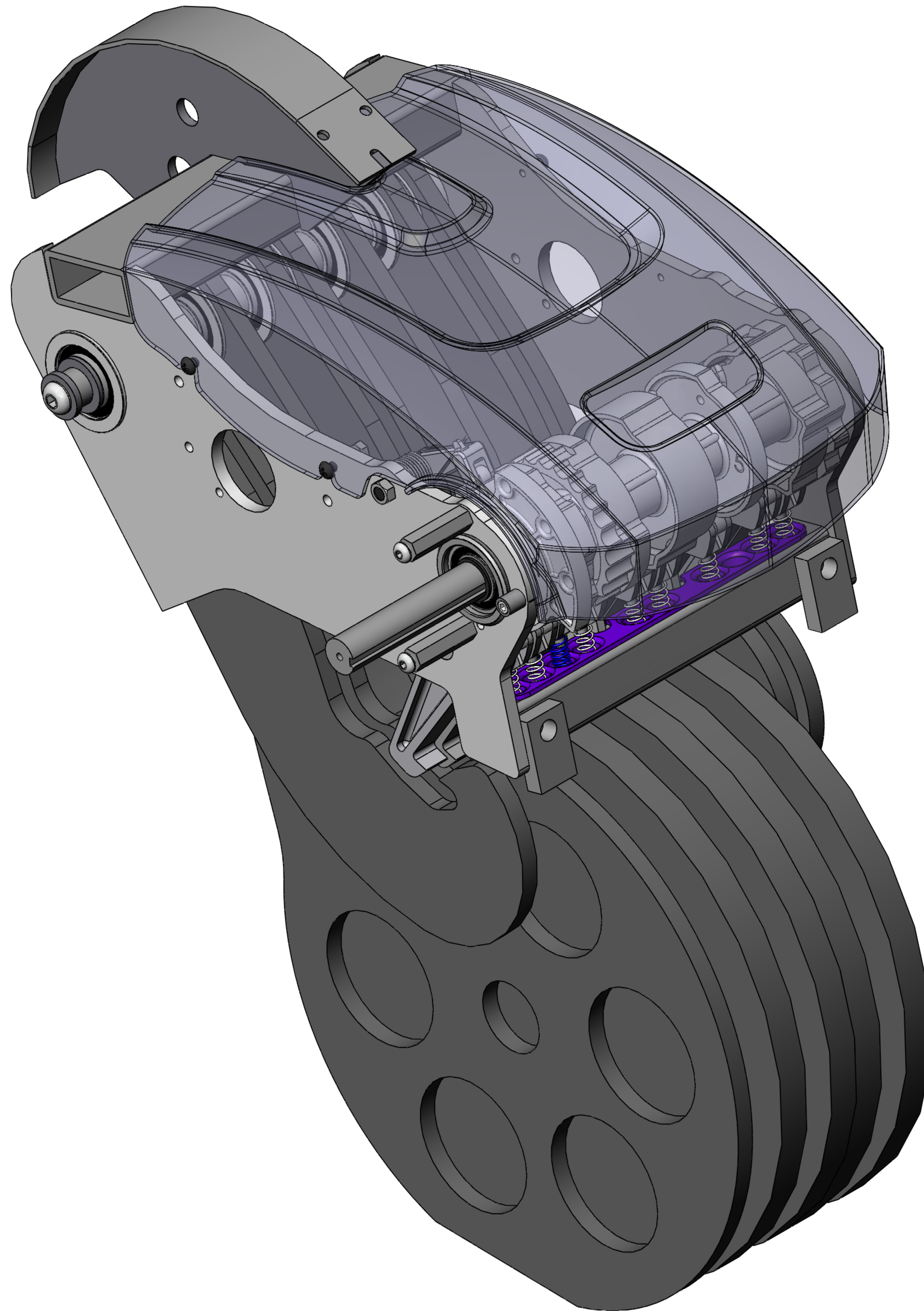
# ENGINE-WT-250-5

MATERIAL. --

FINISH. --

COLOR.

ECO		REVISION		REVISIONS		APPROVED	DATE
REV DESCRIPTION		REV DESCRIPTION		REV DESCRIPTION			
061607-A	A				Initial Release	GMW	6/16/2007
--	B				Added additional exploded views	GMW	9/6/2007



ITEM NO.	PART NUMBER	QTY.	DESCRIPTION
1	56-0133	1	Bearing Weight Arm "ONE" No-Flange
2	09-5910	9	Bearing Weight Arm "ONE"
3	56-0107	2	BEARING FLANGE MOLDED 1"
4	06-8238	9	Spiral Retaining Ring 2.5 Diameter
5	02-4076	3	BLACK SHIELD SCREW-SHORT 1/4-20 x 1/2" ROUND HEAD PHILLIPS SCREW
6	02-4078	1	BLACK SHIELD SCREW 1/2-20 x 1 1/2" ROUND HEAD PHILLIPS SCREW
7	01-4036	1	BUTTON HEAD SOCKET CAP SCREW, 3/8 -16 x 1/2" BRIGHT ZINC
8	02-4144	2	BUTTON HEAD SOCKET CAP SCREW, 5/16 -18 x 1/2" BRIGHT ZINC
9	01-4053	1	BUTTON HEAD SOCKET CAP SCREW, 1/2 -13 x 1" BRIGHT ZINC
10	01-4075	1	BUTTON HEAD SOCKET CAP SCREW, 1/2 -13 x 1 1/4" BRIGHT ZINC
11	09-7211	1	ANCHOR SPRING HOOK CUP
12	06-8235	2	Snap Ring, 1" Heavy External
13	56-0118	2	Mount Workbox Bezel
14	07-9164	1	Spacer Shaft 1.0ID x 1.25OD x 0.625L
15	07-9165	1	Spacer Steel 2.5ID x 3.0OD x 0.125L
16	01-3050	1	SHSS 1/2" x 1 1/4"
17	04-2081	2	Washer Steel 1.0ID x 1.5OD x 0.125L
18	04-2082	2	Washer Steel 0.5ID x 1.25OD x 0.1875L
19	03-1036	1	3/8" Lock Nut
20	Add-on Index Arm Group	1	Add-on Weight Index Arm Group
	56-0100	1	Link Control Index Add-on Cam
	09-1260	1	Roller Hook "ONE" WT. ENGINE
	07-5581	1	Pin Axle Hook Roller
	10-3087	1	Spring Torsion Index Add-on
	05-5137	2	IGUS FLANGE .5 ID x .625 OD x .5L
21	56-0103	1	Shaft Weight Arm One
22	67-1207	1	WEIGHT ARM ASSEMBLY
	67-1207-01	1	PLATE WEIGHT ARM INSIDE
	67-1207-02	1	PLATE WEIGHT ARM OUTSIDE
	67-1207-04	1	TUBE WEIGHT ARM CM
	67-1207-05	1	TUBE SUPPORT CAM
	67-1207-06	2	SUPPORT PLATE HOOK SHAFT
	67-1207-03	1	PLATE WEIGHT ARM CAM WEB
	67-1207-08	1	CAM BAND WEIGHT ARM
	67-1207-07	2	MOUNT BLOCK TAPPED
23	67-1208	1	Tower Hook Rod Assembly
	67-1208-02	1	ROD WEIGHT HOOKS
	67-1208-01	1	Hook Rod Tab
24	09-1261	1	Cam Selection M5-250
25	09-1200	1	MOTOR COVER
26	Hook Group	1	Weight Hook Group
	Hook-Roller-Pin-Group	8	Hook, Roller, & Pin Group
	56-0101	1	Link Connect Weight Hook
	09-1260	1	Roller Hook "ONE" WT. ENGINE
	07-5581	1	Pin Axle Hook Roller
	05-5136	2	IGUS FLANGE .75 ID x .375
	08-1053	6	Spacer PL 0.75ID x 1.0OD x 0.281L
	08-1054	1	Spacer PL 0.75ID x 1.0OD x 0.875L
	Main Cam Index Arm Group	1	Main Cam Index Arm Group
	56-0102	1	Link Control Index Cams
	09-1260	1	Roller Hook "ONE" WT. ENGINE
	07-5581	1	Pin Axle Hook Roller
	05-5136	2	IGUS FLANGE .75 ID x .375
27	Selection Cams-250 Group	1	Main Selection Cam Group - 250 lb system
	56-0104	1	Shaft Cams One
	09-1262	1	Cam Selection M20-250 "ONE"
	09-1263	1	Cam Selection M50-1-Index-250 "ONE"
	09-1264	1	Cam Selection M100-250 "ONE"
	09-1265	1	Cam Selection M50-2-250 "ONE"
	09-1266	1	Cam Selection M10-250 "ONE"
	08-1052	1	Spacer PL 1.0ID x 1.25OD x 0.188L
28	Weight Plates-250 Group	1	Weight Plate Group - 250 lb
	17-2275	4	Weight Plate 50 lb ONE
	17-2265	1	Weight Plate 20 lb ONE
	17-2260	2	Weight Plate 10 lb ONE
	17-2255	1	Weight Plate 5 lb ONE
	07-9163	4	Spacer Shaft 1.0ID x 1.25OD x 0.875L
29	Hook Springs Group	1	Hook Spring Group
	10-2040	8	Spring Compression Hook (LC 045G 12 S)
	10-2050	1	Spring Compression Main Index (LC 055G 12 S)
30	03-2020	1	1/4" Lock Nut
31	02-4175	1	SOCKET HEAD CAP SCREW, 1/4 -20 UNC x 3/4 Bright Zinc
32	07-8386	1	Stop Add-on weight lever

**NAUTILUS, INC.**  
16400 SE NAUTILUS DRIVE, VANCOUVER, WA 98683

UNLESS OTHERWISE SPECIFIED:  
1. ALL DIMENSIONS APPLY BEFORE PLATING OR COATING.  
2. REMOVE ALL BURRS, BREAK SHARP EDGES: 600 W MAX.  
3. ALL MACHINED SURFACES Ra 125 µm  
4. ALL APPLICABLE NAUTILUS STANDARDS AND SPECIFICATIONS APPLY.

THIRD ANGLE PROJECTION  
**INCH**

TOLERANCES:  
X .125  
XX .020  
XXX .010  
XXX .005  
XXX .002  
XXX .001  
ANGULAR 1°

DESIGNED **G. WEBB**  
DRAWN **G. Webb**  
DATE **09/06/07**

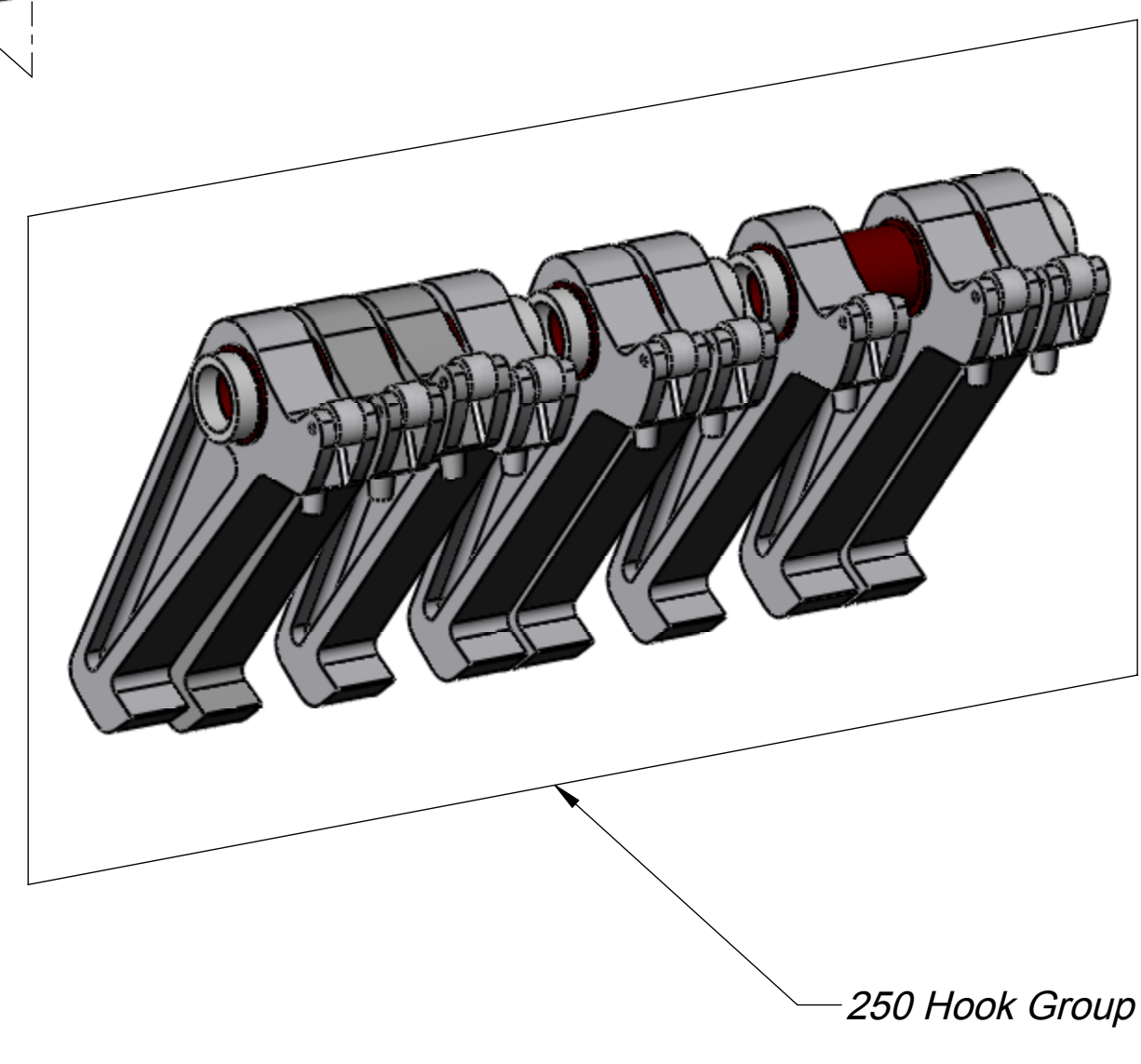
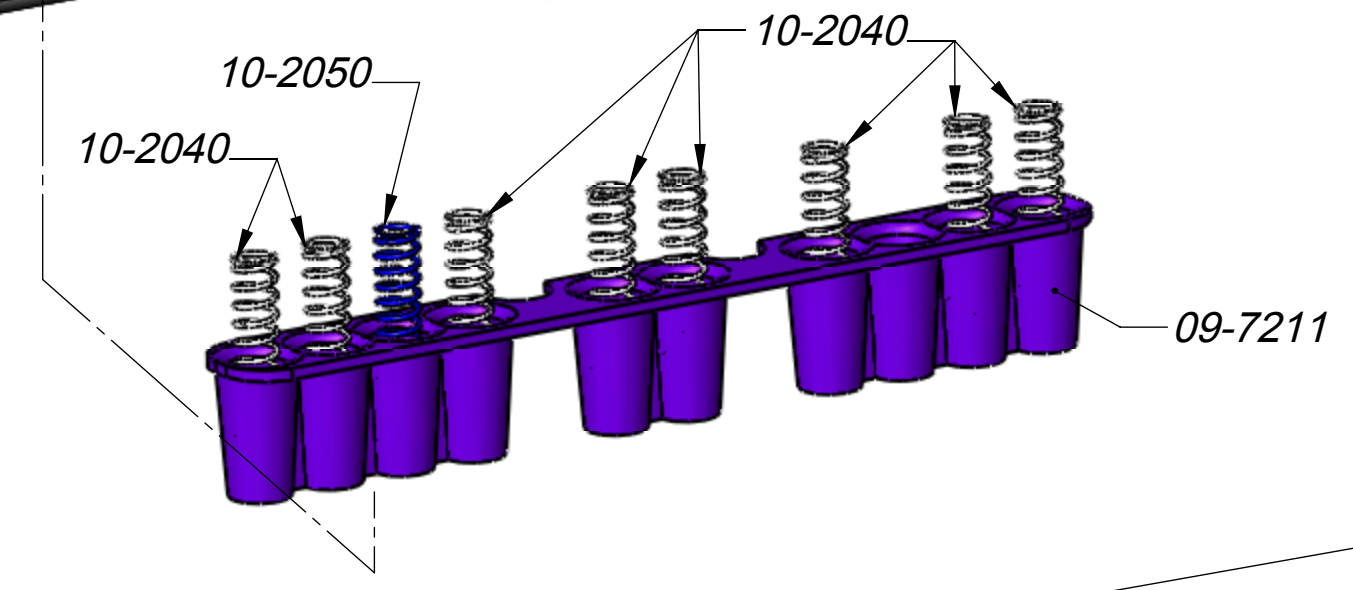
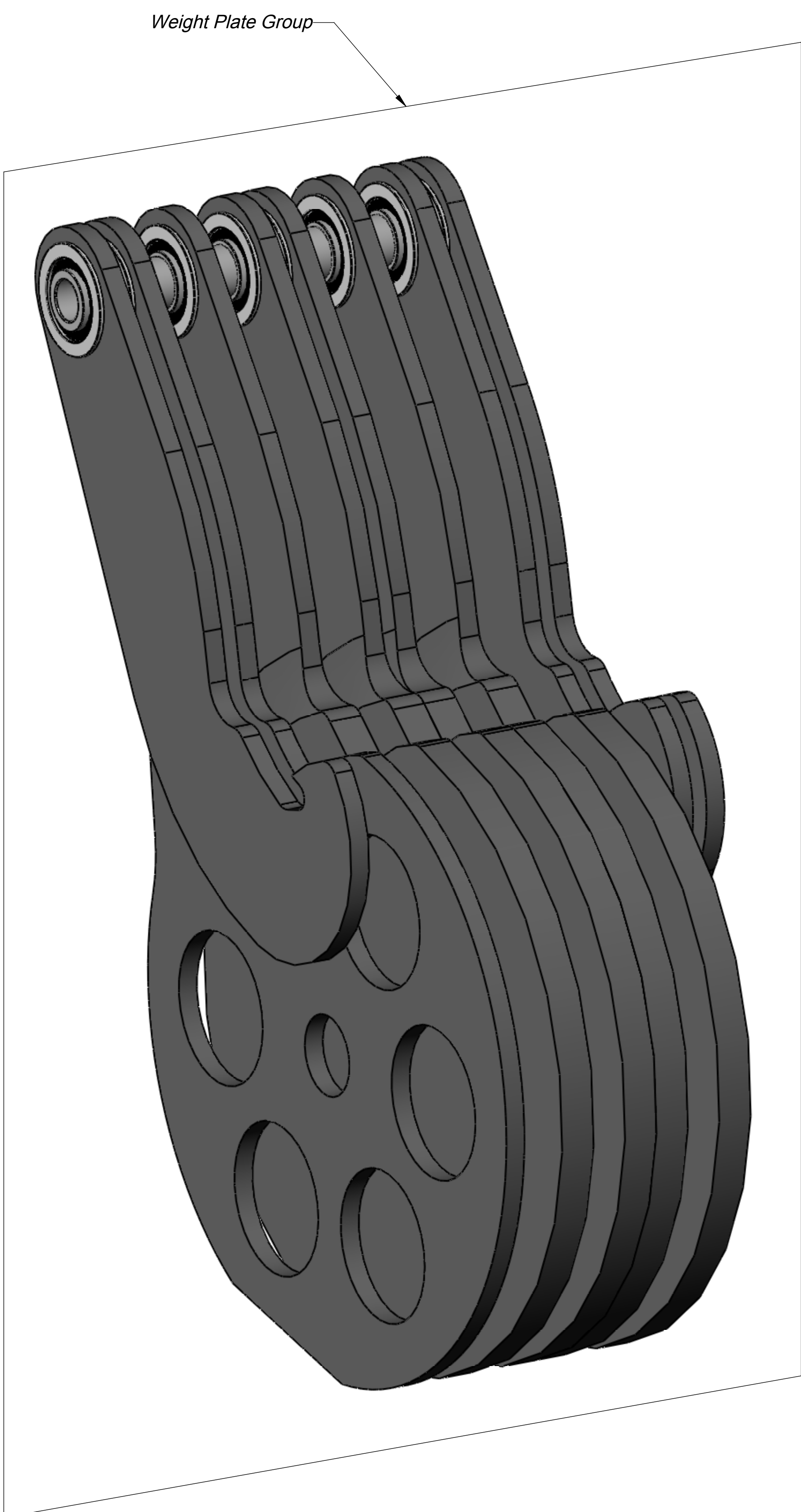
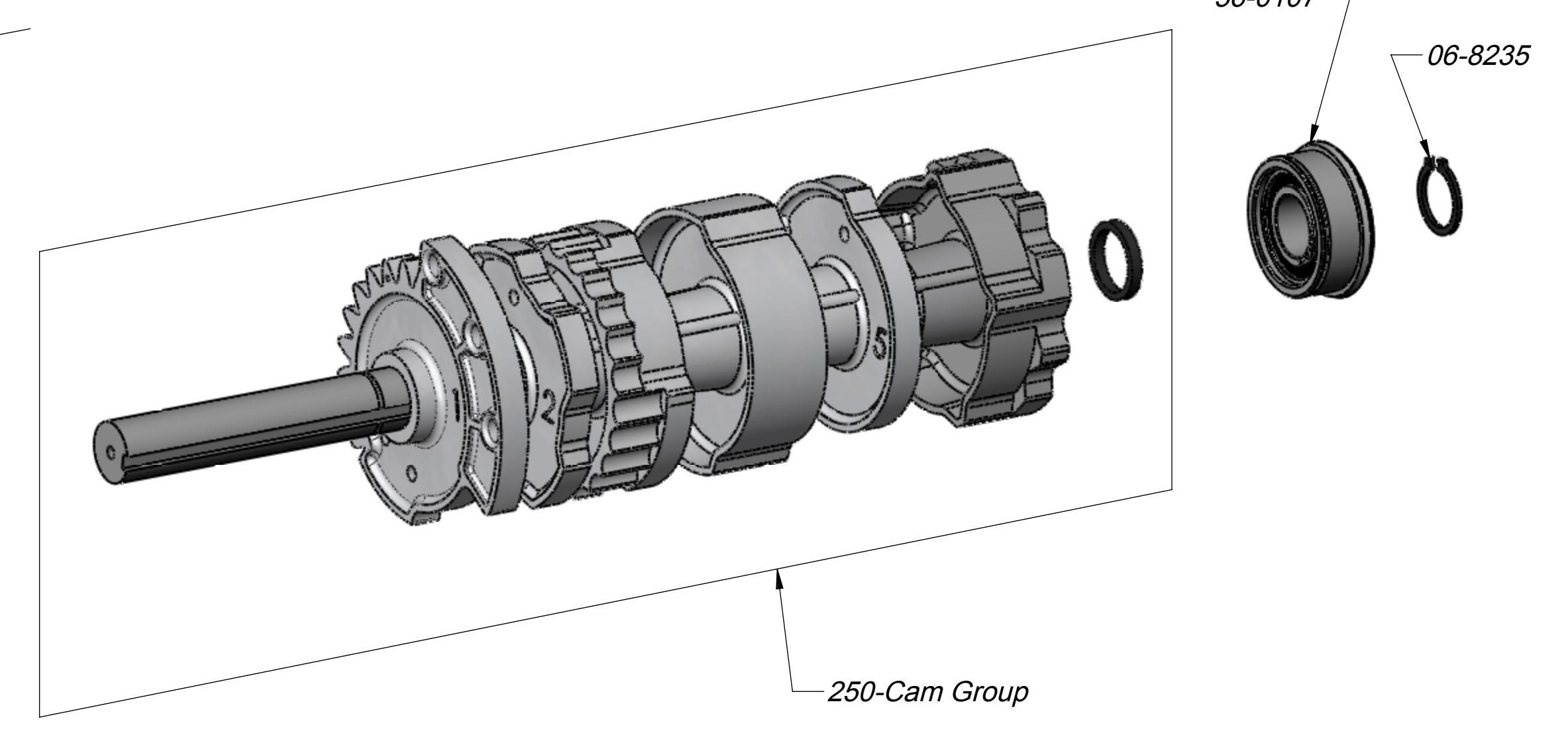
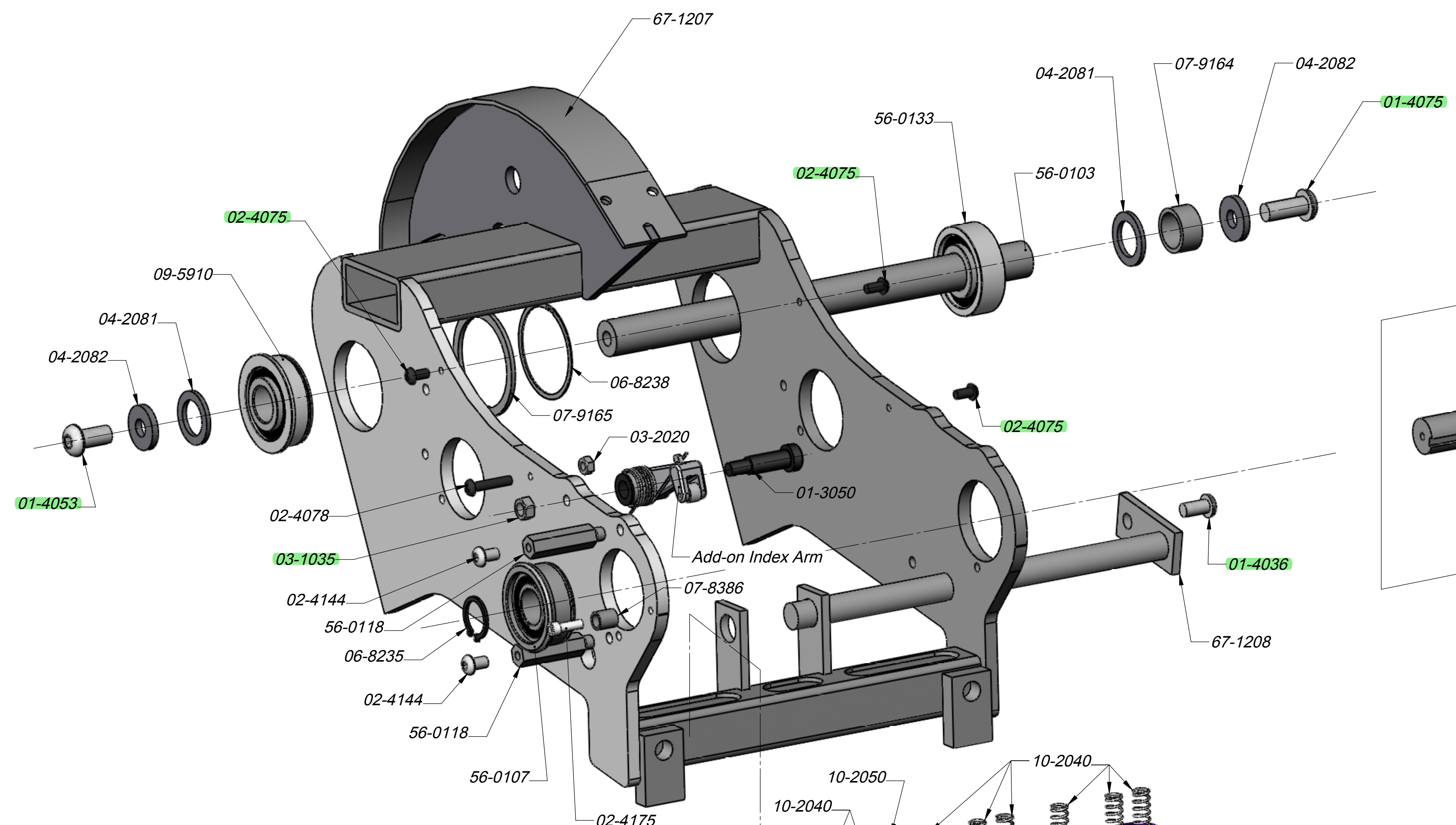
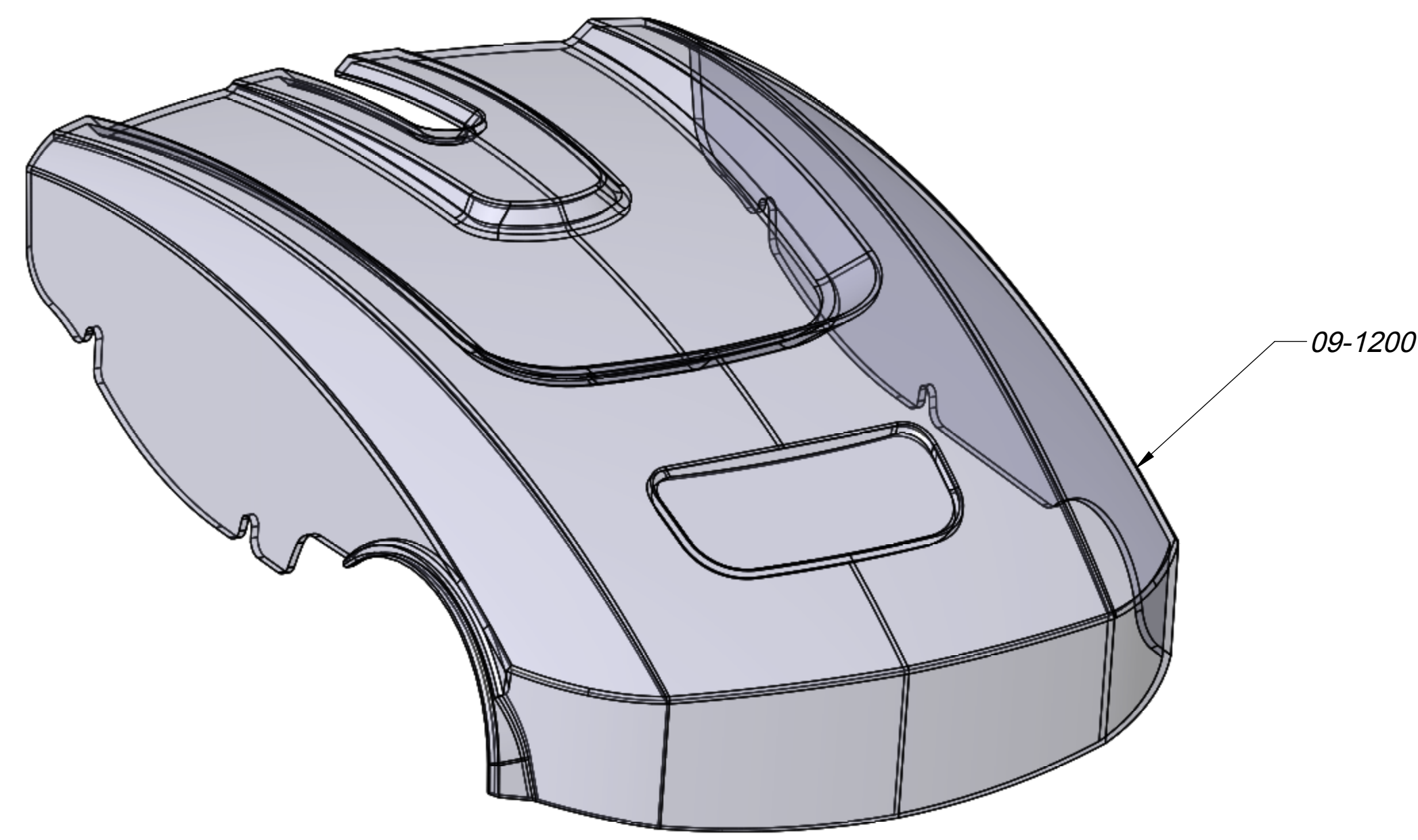
TITLE: **ENGINE WEIGHT 250 LB 5 LB INCR**  
SIZE PART NO. **ENGINE-WT-250-5B**  
SCALE: 1:4 SHEET 1 OF 6

# ENGINE-WT-250-5

MATERIAL. --

FINISH. --

COLOR.



**NAUTILUS, INC.**  
16400 SE NAUTILUS DRIVE, VANCOUVER, WA 98683

UNLESS OTHERWISE SPECIFIED:  
1. ALL DIMENSIONS APPLY BEFORE PLATING OR COATING.  
2. REMOVE ALL BURRS, BREAK SHARP EDGES: .030 IN MAX.  
3. ALL MACHINED SURFACES RA 125 UN  
4. ALL APPLICABLE NAUTILUS STANDARDS AND SPECIFICATIONS APPLY.

**INCH** THIRD ANGLE PROJECTION

TOLERANCES:  
X .125  
XX .050  
XXX .010  
XXX .005  
XXX .002  
ANGULAR 1°

DESIGNED **G. WEBB**  
DRAWN **G. Webb**  
DATE **09/06/07**

TITLE: **ENGINE WEIGHT 250 LB 5 LB INCR**  
PART NO. **ENGINE-WT-250-5B**  
SCALE: 1:2 SHEET 2 OF 6

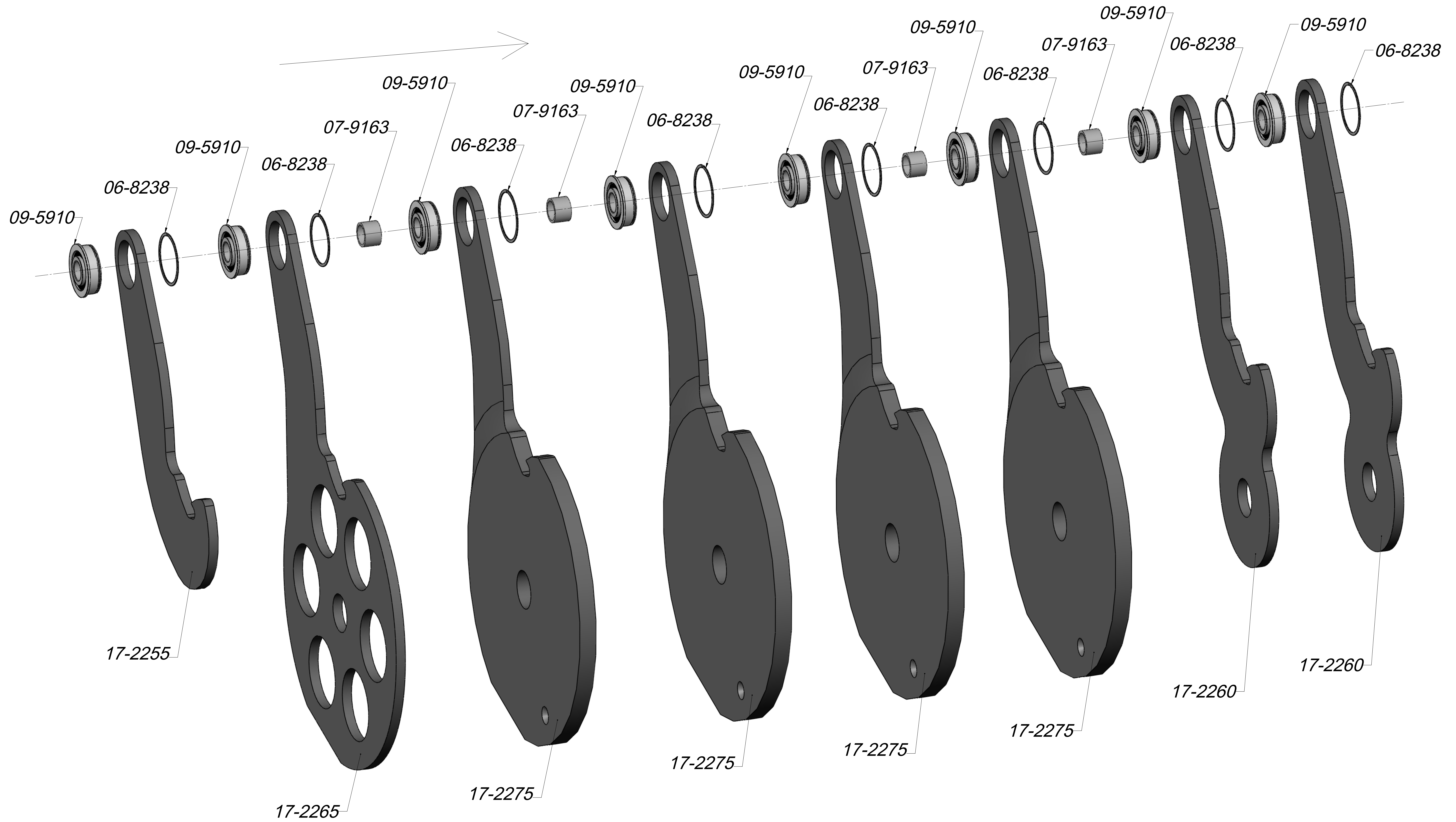
**ENGINE-WT-250-5**

MATERIAL. --

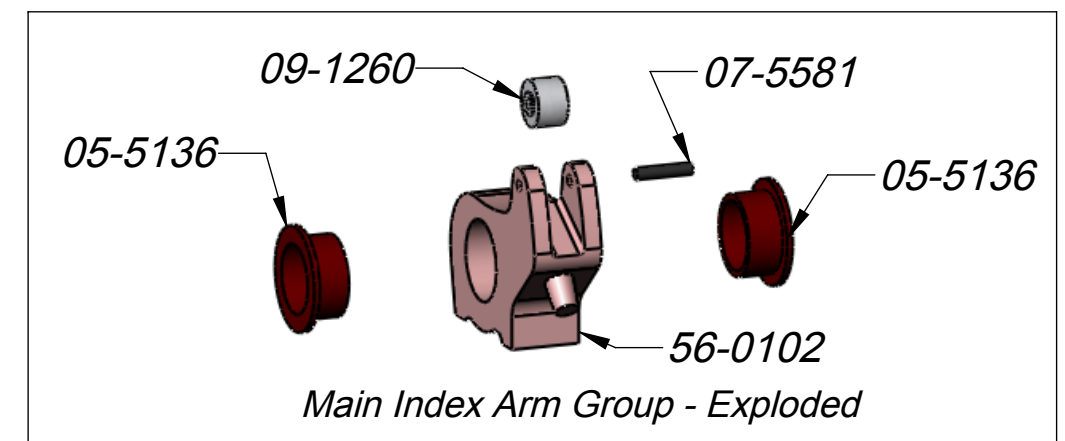
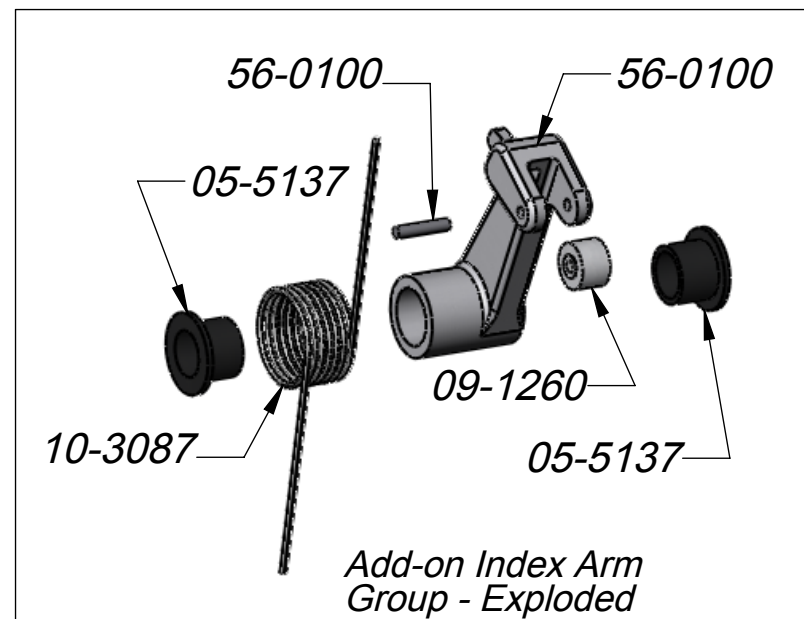
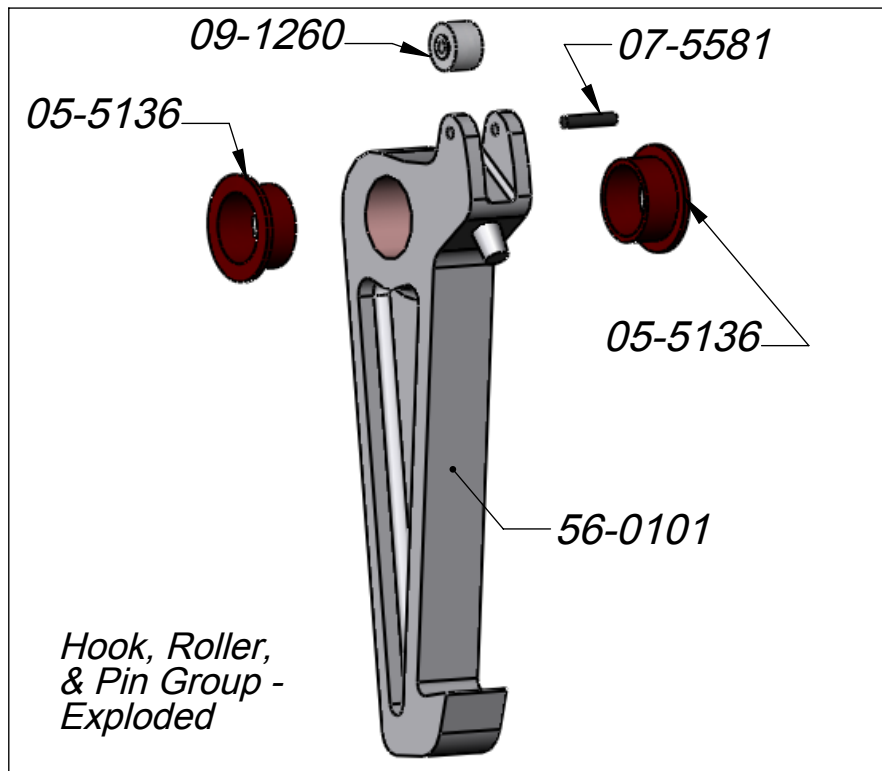
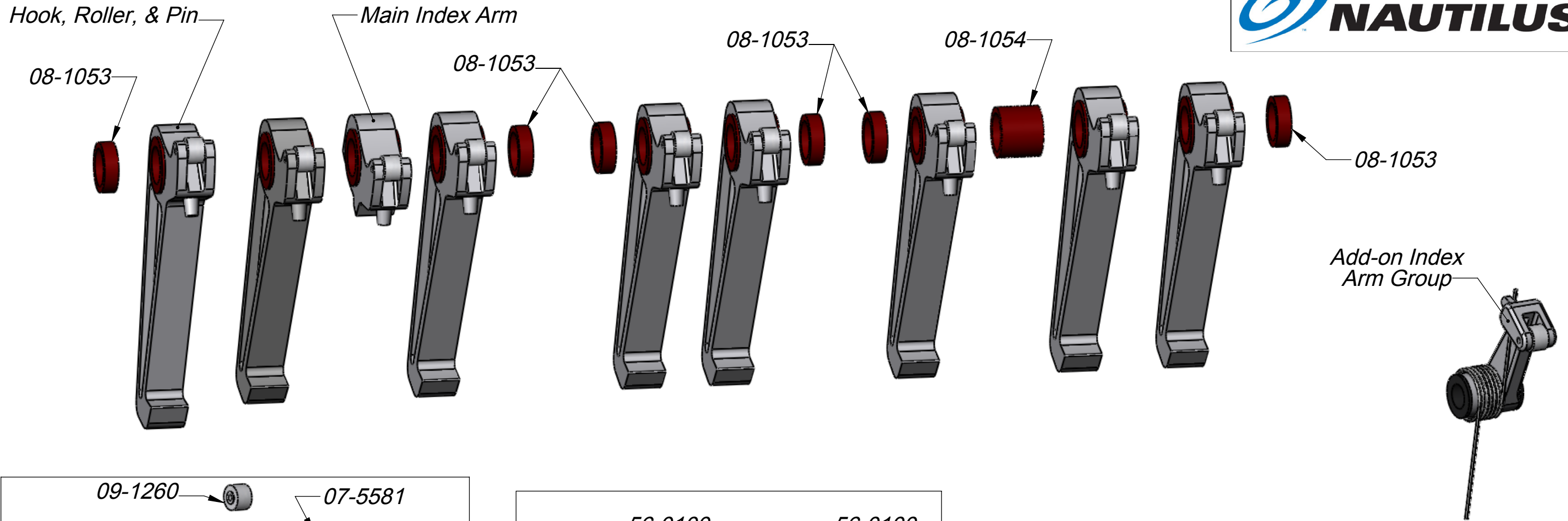
FINISH. --

COLOR.

**Flange bearing (09-5910) always installs with flange on left side (seat frame side) of weight plate.**



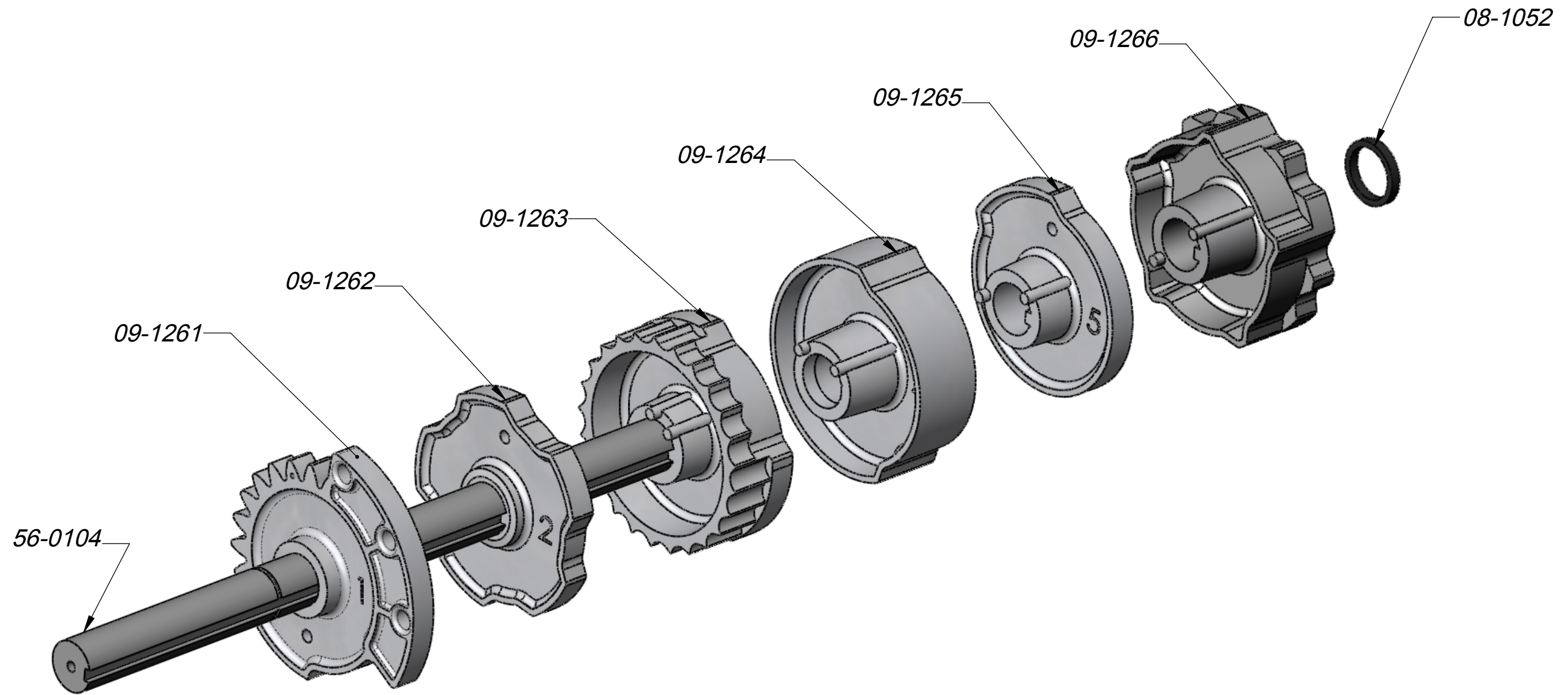
<b>NAUTILUS, INC.</b> 16400 SE NAUTILUS DRIVE, VANCOUVER, WA 98683		<small>UNLESS OTHERWISE SPECIFIED:          1. ALL DIMENSIONS APPLY BEFORE PLATING OR COATING.          2. REMOVE ALL BURRS, BREAK SHARP EDGES: 60° IN MAX.          3. ALL MACHINED SURFACES Ra 125 µIN.          4. ALL APPLICABLE NAUTILUS STANDARDS AND SPECIFICATIONS APPLY.</small>	<b>INCH</b>	<small>THIRD ANGLE PROJECTION</small> 	<small>TOLERANCES:</small> X .125 XX .050 XXX .010 XXXX .005 XXXX .002 ANGULAR 1°	DESIGNED <b>G. WEBB</b>	TITLE: <b>ENGINE WEIGHT 250 LB 5 LB INCR</b>
						DRAWN <b>G. Webb</b>	SIZE <b>E</b>
<small>(INTERNET DIMENSIONS AND TOLERANCES PER ASME Y14.5M - 1994)</small>						DATE <b>09/06/07</b>	SCALE: 1:2
<small>DO NOT SCALE DRAWING</small>						SHEET 3 OF 6	MODEL REV



## **Hooks & Index Arms for 250 lb Sys**

**Nautilus ONE  
Engine-WT-250-5  
Parts Diagram**

**Last Rev Date: 08/29/2007**



**Last Rev Date: 08/29/2007**

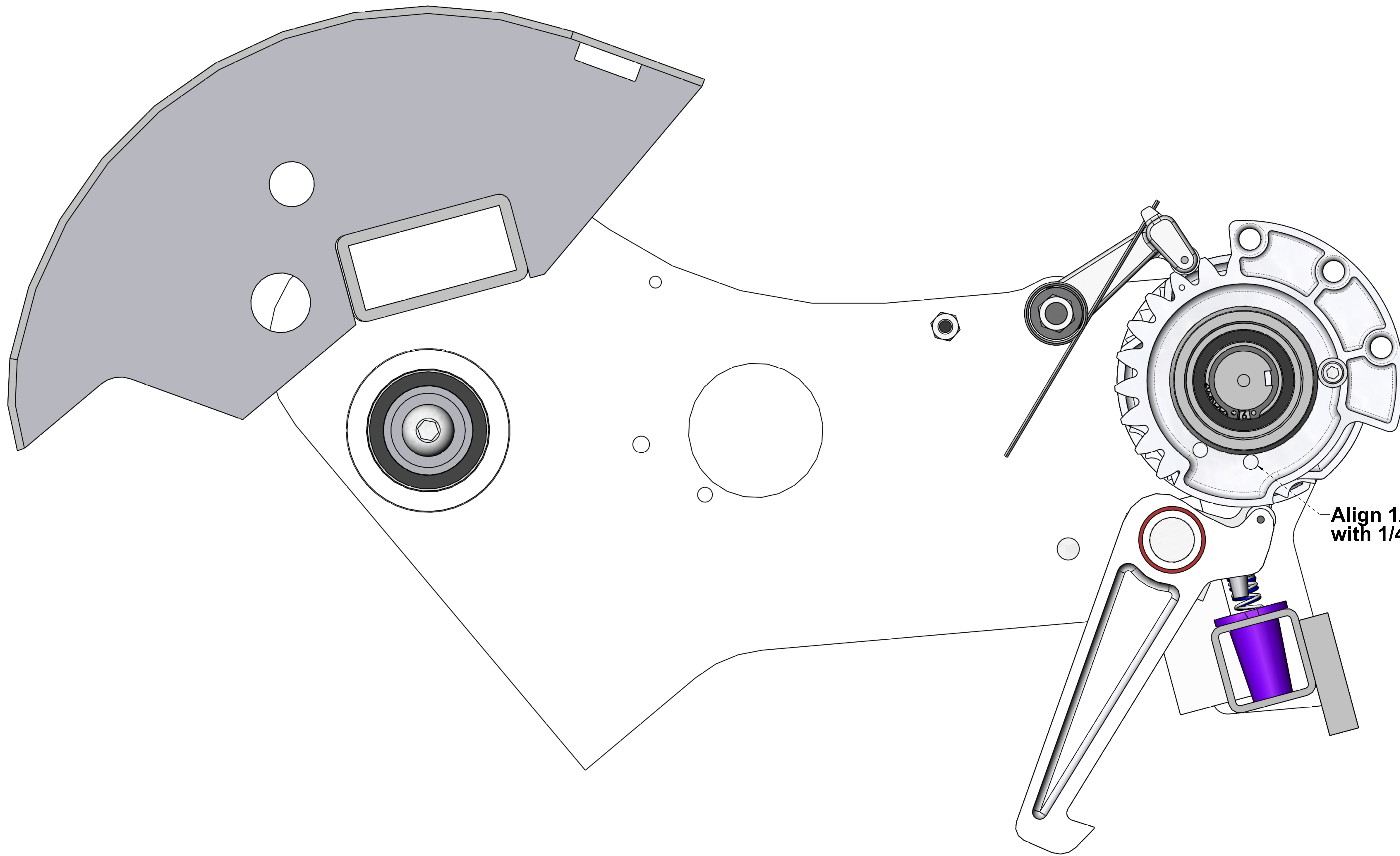
**Cam Group for 250 Sys**  
**Nautilus ONE Line**  
**Engine-WT-250-5**  
**Parts Diagram**

# ENGINE-WT-250-5

MATERIAL. --

FINISH. --

COLOR.



Align 1/4" hole in weight arm plate with 1/4" hole in add-on cam.

<b>NAUTILUS, INC.</b> 16400 SE NAUTILUS DRIVE, VANCOUVER, WA 98683		<small>UNLESS OTHERWISE SPECIFIED:</small> 1. ALL DIMENSIONS APPLY BEFORE PLATING OR COATING. 2. REMOVE ALL BURRS, BREAK SHARP EDGES: 60° W MAX. 3. ALL MACHINED SURFACES Ra 125 µm 4. ALL APPLICABLE NAUTILUS STANDARDS AND SPECIFICATIONS APPLY.	<b>INCH</b>	THIRD ANGLE PROJECTION	<small>TOLERANCES:</small> X : .125 XX : .050 XXX : .010 XXXX : .005 XXXX : .004 ANGULAR : 1° <small>(INTERPRET DIMENSIONS AND TOLERANCES PER ASME Y14.5M - 1994)</small>	DESIGNED <b>G. WEBB</b>	TITLE: <b>ENGINE WEIGHT 250 LB 5 LB INCR</b>
						DRAWN <b>G. Webb</b>	SIZE PART NO. <b>ENGINE-WT-250-5B</b>
<small>DO NOT SCALE DRAWING</small>						DATE <b>09/06/07</b>	SCALE: 1:2
<small>This document is the property of Nautilus, Inc. It may not be reproduced in whole or part, provided to third parties, or used for any purposes other than the performance of work for Nautilus, Inc. without written authorization. All rights are reserved, including copyrights.</small>						SHEET 6 OF 6	<small>NOI_E_REV 0</small>