

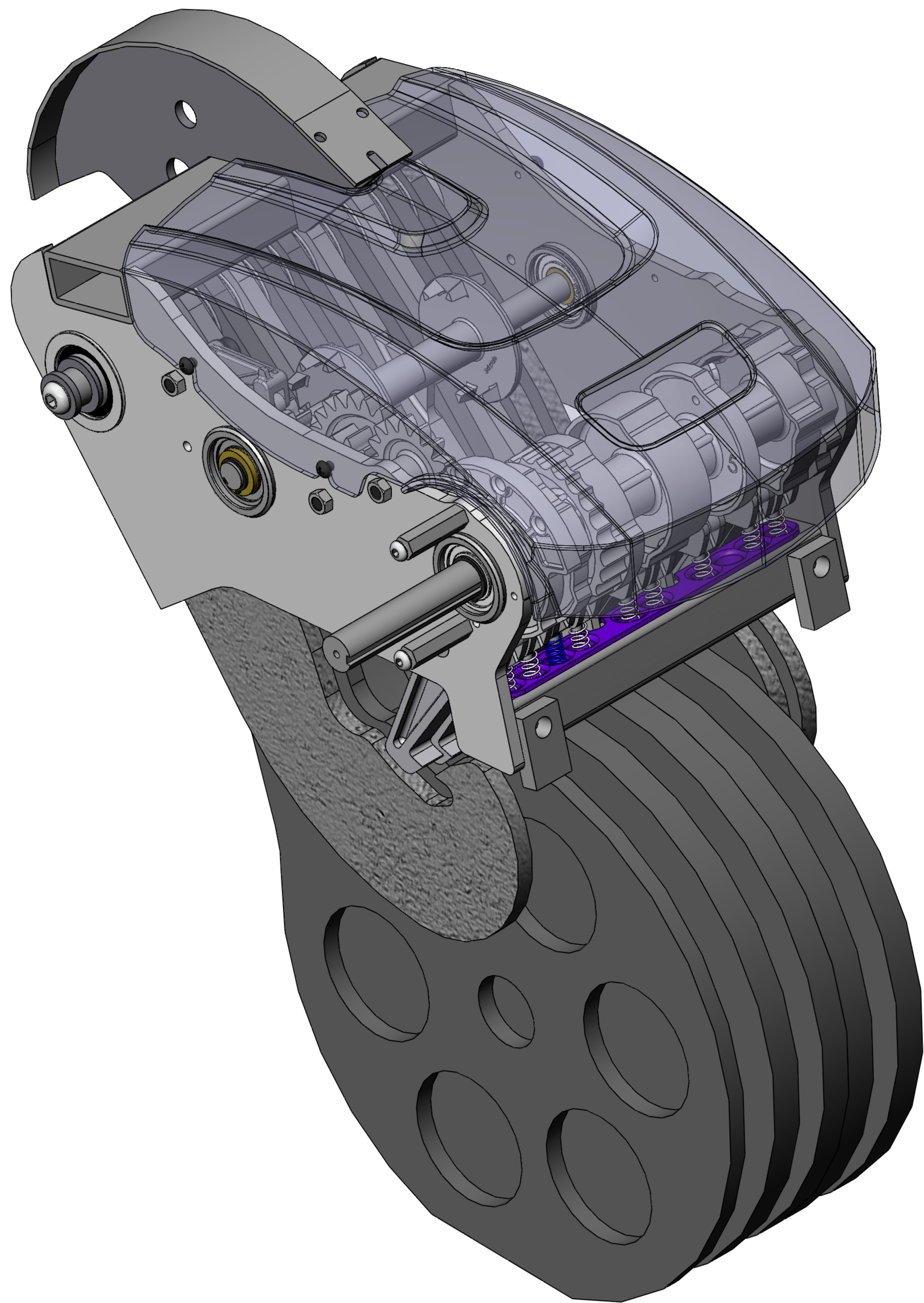
ENGINE-WT-250-1

MATERIAL. --

FINISH. --

COLOR.

ECO		REVISION		REVISIONS		APPROVED	DATE
061607-A	--	A		REV DESCRIPTION	Initial Release	GMW	6/16/2007
		B		Added additional exploded views		GMW	9/6/2007



ITEM NO.	PART NUMBER	QTY.	DESCRIPTION
1	56-0133	1	Bearing Weight Arm "ONE" No-Flange
2	09-5910	9	Bearing Main Weights Pivot
3	56-0107	4	BEARING FLANGE MOLDED 1"
4	05-5138	2	IGUS FLANGE .75 ID x 1.0 OD x 0.75L
5	06-8238	13	Spiral Retaining Ring 2.5 Diameter
6	02-4075	4	BLACK SHIELD SCREW-SHORT 1/2-20 x 1/2" ROUND HEAD PHILLIPS SCREW
7	01-4036	1	BUTTON HEAD SOCKET CAP SCREW, 3/8 -16 x 3/4" BRIGHT ZINC
8	02-4144	2	BUTTON HEAD SOCKET CAP SCREW, 5/16 -18 x 1/2" - BRIGHT ZINC
9	01-4053	1	BUTTON HEAD SOCKET CAP SCREW, 1/2 -13 x 1" BRIGHT ZINC
10	01-4075	1	BUTTON HEAD SOCKET CAP SCREW, 1/2 -13 x 1 1/4" BRIGHT ZINC
11	09-7211	1	ANCHOR SPRING HOOK CUP
12	06-8235	2	Snap Ring, 1" Heavy External
13	56-0118	2	Mount Workbox Bezel
14	07-9164	1	Spacer Shaft 1.0ID x 1.25OD x 0.625L
15	07-9165	1	Spacer Steel 2.5ID x 3.0OD x 0.125L
16	04-2081	2	Washer Steel 1.0ID x 1.5OD x 0.125L
17	04-2082	2	Washer Steel 0.5ID x 1.25OD x 0.1875L
18	1 lb Add-on-250-Group	1	ADD-ON WEIGHT-1 LB. GROUP
	17-2250	4	Weight Plate 1 lb Add-on ONE
	09-5910	4	Bearing Main Weights Pivot
19	09-1261	1	Cam Selection M5-250
20	03-1035	3	3/8" Lock Nut
21	01-3030	1	SHSS 1/2" x 3/4"
22	01-3050	1	SHSS 1/2" x 1 1/4"
23	01-3060	1	SHSS 1/2" x 1 1/2"
24	02-4174	2	SOCKET HEAD CAP SCREW, 1/2 -20 UNC x 1/2 Bright Zinc
25	08-1051	1	Spacer PL 0.75ID x 1.0OD x 0.75L
26	06-8162	2	Snap Ring, 3/4" Heavy External
27	09-7212	1	Component Gear 18T ONE
28	09-7213	1	Component Gear 14T/24T ONE
29	09-7214	1	Component Gear 12T-Index ONE
30	07-5863	1	Shaft Weight Add-on 250 lb
31	07-5876	1	Hub Weight Engagement 1# Add-on 1
32	07-5877	1	Hub Weight Engagement 1# Add-on 2
33	Add-on Index Arm Group	1	Add-on Weight Index Arm Group
	56-0100	1	Link Control Index Add-on Cam
	09-1260	1	Roller Hook "ONE" WT. ENGINE
	07-5581	1	Pin Axle Hook Roller
	10-3087	1	Spring Torsion Index Add-on
	05-5137	2	IGUS FLANGE .5 ID x .625 OD x .5L
34	56-0103	1	Shaft Weight Arm One
35	67-1207	1	WEIGHT ARM ASSEMBLY
	67-1207-01	1	PLATE WEIGHT ARM INSIDE
	67-1207-02	1	PLATE WEIGHT ARM OUTSIDE
	67-1207-03	1	PLATE WEIGHT ARM CAM WEB
	67-1207-04	1	TUBE WEIGHT ARM CM
	67-1207-05	1	TUBE SUPPORT CAM
	67-1207-06	2	SUPPORT PLATE HOOK SHAFT
	67-1207-07	2	MOUNT BLOCK TAPPED
	67-1207-08	1	CAM BAND WEIGHT ARM
36	67-1208	1	Tower Hook Rod Assembly
	67-1208-02	1	ROD WEIGHT HOOKS
	67-1208-01	1	Hook Rod Tab
37	09-1200	1	MOTOR COVER
38	Hook Group	1	Weight Hook Group
	Hook-Roller-Pin-Group	8	Hook, Roller, & Pin Group
	56-0101	1	Link Connect Weight Hook
	09-1260	1	Roller Hook "ONE" WT. ENGINE
	07-5581	1	Pin Axle Hook Roller
	05-5136	2	IGUS FLANGE .75 ID x .375
	08-1053	6	Spacer PL 0.75ID x 1.0OD x 0.281L
	08-1054	1	Spacer PL 0.75ID x 1.0OD x 0.875L
	Main Cam Index Arm Group	1	Main Cam Index Arm Group
	56-0102	1	Link Control Index Cams
	09-1260	1	Roller Hook "ONE" WT. ENGINE
	07-5581	1	Pin Axle Hook Roller
	05-5136	2	IGUS FLANGE .75 ID x .375
39	Selection Cams-250 Group	1	Main Selection Cam Group - 250 lb system
	56-0104	1	Shaft Cams One
	09-1262	1	Cam Selection M20-250 "ONE"
	09-1263	1	Cam Selection M50-1-Index-250 "ONE"
	09-1264	1	Cam Selection M100-250 "ONE"
	09-1265	1	Cam Selection M50-2-250 "ONE"
	09-1266	1	Cam Selection M10-250 "ONE"
	08-1052	1	Spacer PL 1.0ID x 1.25OD x 0.188L
40	Weight Plates-250 Group	1	Weight Plate Group - 250 lb
	17-2275	4	Weight Plate 50 lb ONE
	17-2285	1	Weight Plate 20 lb ONE
	17-2280	2	Weight Plate 10 lb ONE
	17-2255	1	Weight Plate 5 lb ONE
41	Hook Springs Group	1	Hook Spring Group
	10-2040	8	Spring Compression Hook (LC 045G 12 S)
	10-2050	1	Spring Compression Main Index (LC 055G 12 S)

NAUTILUS, INC.
16400 SE NAUTILUS DRIVE, VANCOUVER, WA 98683

UNLESS OTHERWISE SPECIFIED:
 1. ALL DIMENSIONS APPLY BEFORE PLATING OR COATING.
 2. REMOVE ALL BURRS, BREAK SHARP EDGES: .030 IN MAX.
 3. ALL MACHINED SURFACES Ra 125 µIN
 4. ALL APPLICABLE NAUTILUS STANDARDS AND SPECIFICATIONS APPLY.

THIRD ANGLE PROJECTION

TOLERANCES:

X	: .125
XX	: .020
XXX	: .010
XXX	: .005
XXX	: .004
ANGULAR	: 1°

(INTERNET DIMENSIONS AND TOLERANCES PER ASME Y14.5M - 1994)

DESIGNED	G. WEBB
DRAWN	G. Webb
DATE	09/06/07

DO NOT SCALE DRAWING

TITLE: **ENGINE WEIGHT 250 LB 1 LB INCR**

SIZE: **E** PART NO: **ENGINE-WT-250-1B**

SCALE: 1:4 SHEET 1 OF 7

This document is the property of Nautilus, Inc. It may not be reproduced in whole or part, provided to third parties, or used for any purposes other than the performance of work for Nautilus, Inc. without written authorization. All rights are reserved, including copyrights.

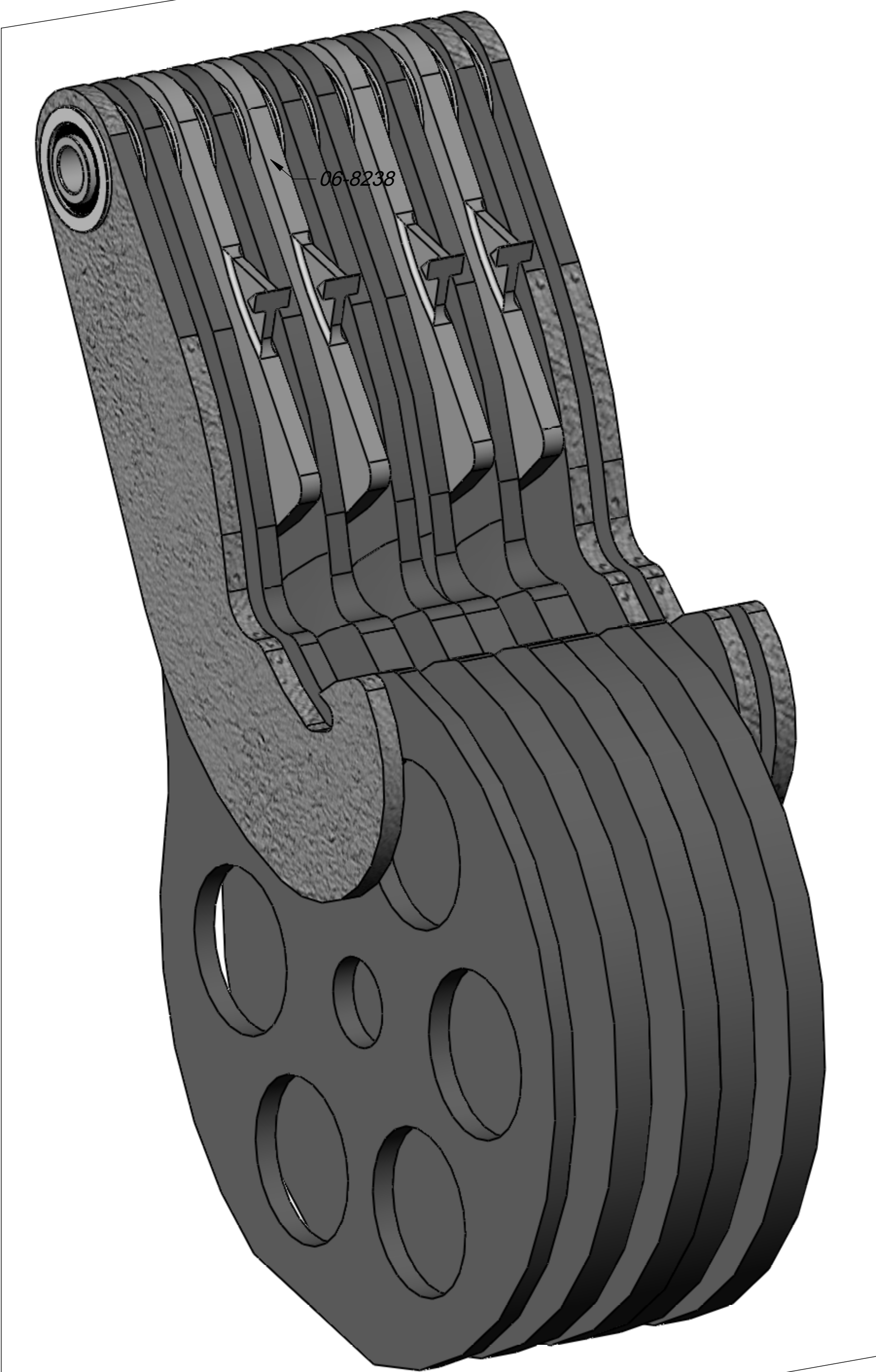
ENGINE-WT-250-1

MATERIAL. --

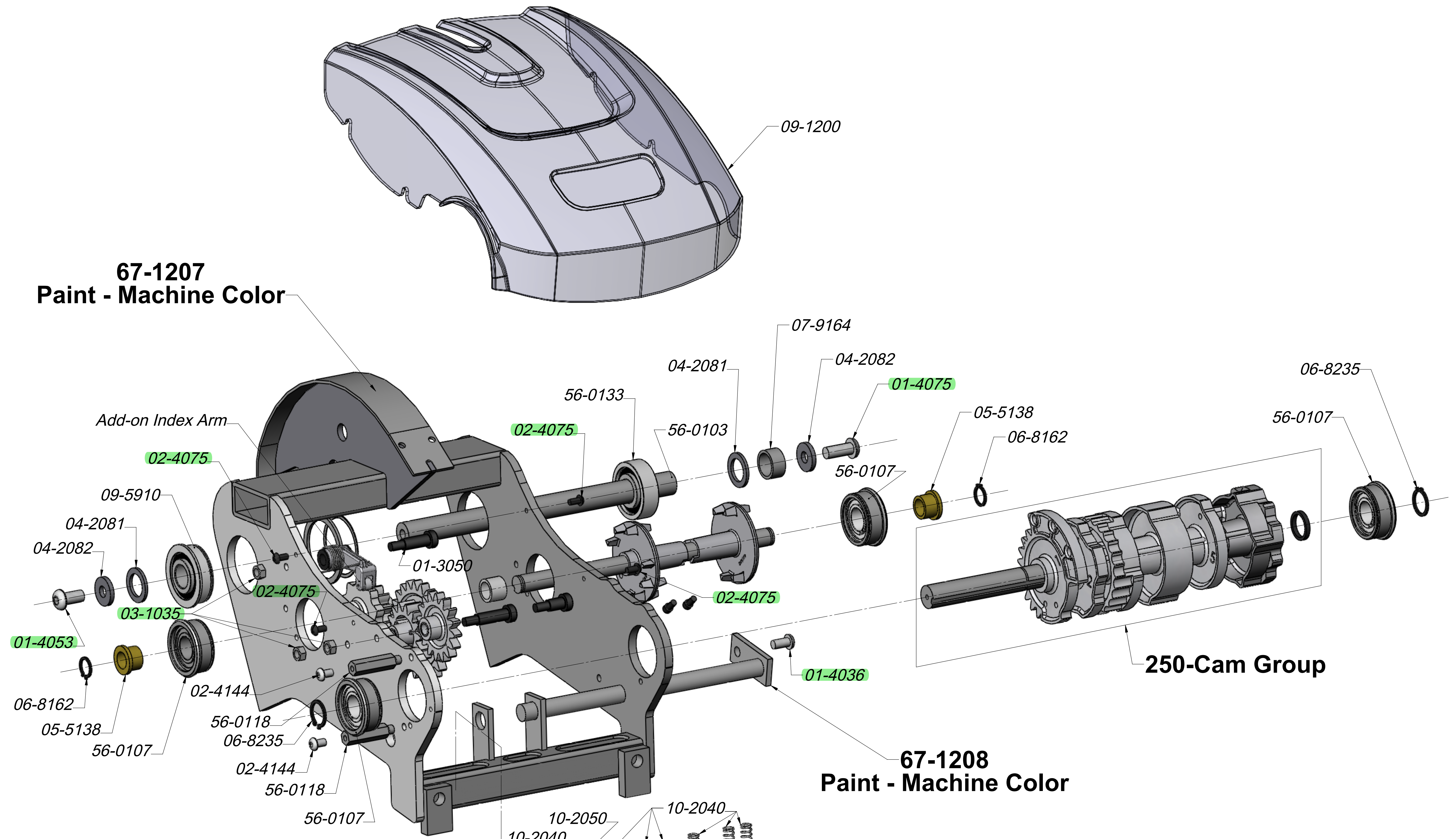
FINISH. --

COLOR.

Weight Plate Group



67-1207 Paint - Machine Color



250-Cam Group

67-1208 Paint - Machine Color

250 Hook Group

NAUTILUS, INC.
16400 SE NAUTILUS DRIVE, VANCOUVER, WA 98683

UNLESS OTHERWISE SPECIFIED:
1. ALL DIMENSIONS APPLY BEFORE PLATING OR COATING.
2. REMOVE ALL BURRS, BREAK SHARP EDGES: 60° IN MAX.
3. ALL MACHINED SURFACES Ra 125 µm
4. ALL APPLICABLE NAUTILUS STANDARDS AND SPECIFICATIONS APPLY.

INCH THIRD ANGLE PROJECTION

TOLERANCES:
X .125
XX .050
XXX .010
XXX .005
XXX .002
ANGULAR 1°

DESIGNED G. WEBB
DRAWN G. Webb
DATE 09/06/07

TITLE: **ENGINE WEIGHT 250 LB 1 LB INCR**
SIZE: **E** PART NO: **ENGINE-WT-250-1B**
SCALE: 1:2 SHEET 2 OF 7

This document is the property of Nautilus, Inc. It may not be reproduced in whole or part, provided to third parties, or used for any purposes other than the performance of work for Nautilus, Inc. without written authorization. All rights are reserved, including copyrights.

ENGINE-WT-250-1

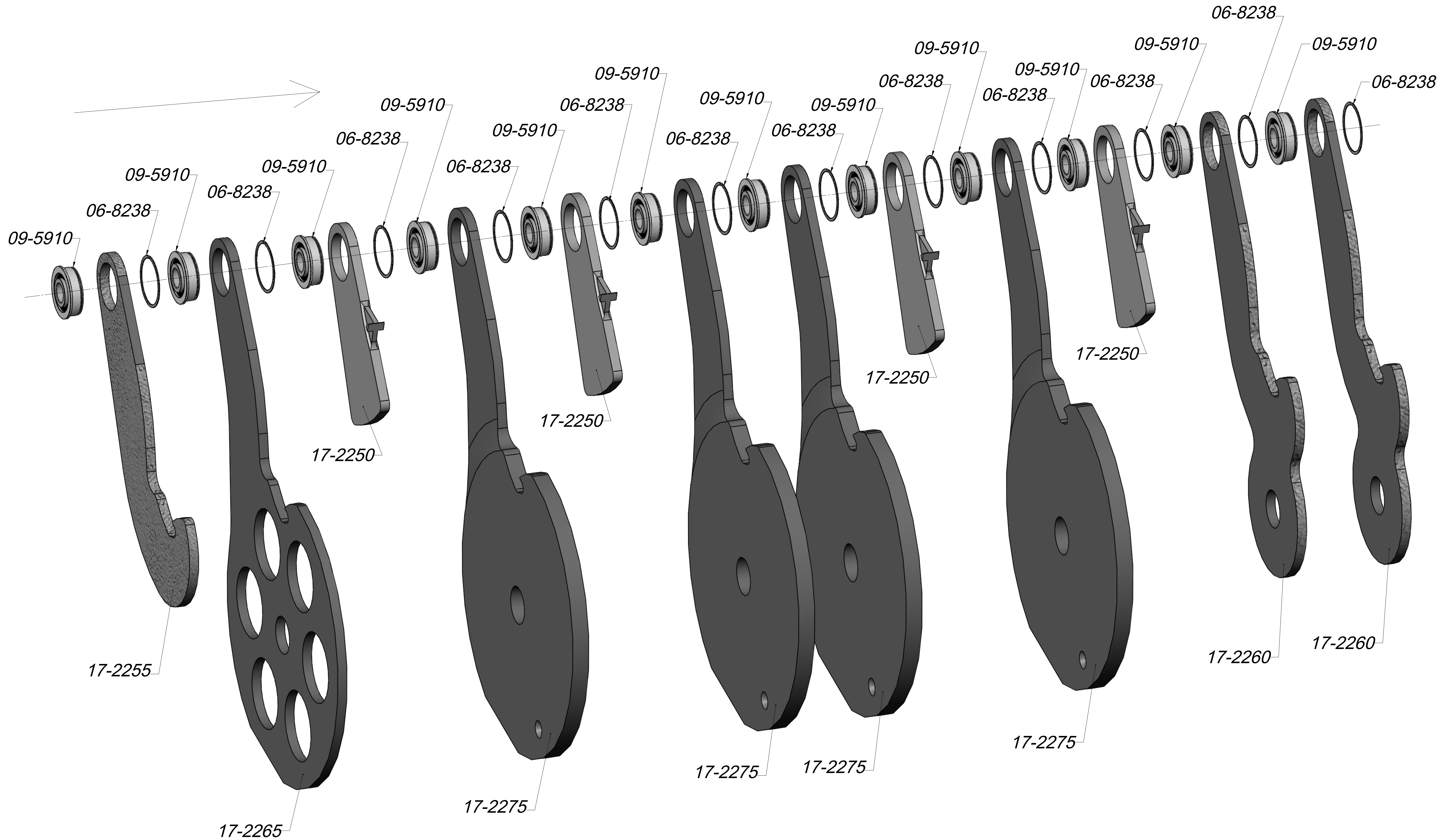
MATERIAL. --

FINISH. --

COLOR.

All weights color - Black

Flange bearing (09-5910) always installs with flange on left side (seat frame side) of weight plate.



NAUTILUS, INC.
16400 SE NAUTILUS DRIVE, VANCOUVER, WA 98683



UNLESS OTHERWISE SPECIFIED:
1. ALL DIMENSIONS APPLY BEFORE PLATING OR COATING.
2. REMOVE ALL BURRS, BREAK SHARP EDGES: 60° MIN MAX.
3. ALL MACHINED SURFACES R_a 125 μIN MAX.
4. ALL APPLICABLE NAUTILUS STANDARDS AND SPECIFICATIONS APPLY.

INCH

THIRD ANGLE PROJECTION

TOLERANCES:
X : .125
X.X : .020
X.XX : .010
X.XXX : .005
XXX : .001
ANGULAR : 1°

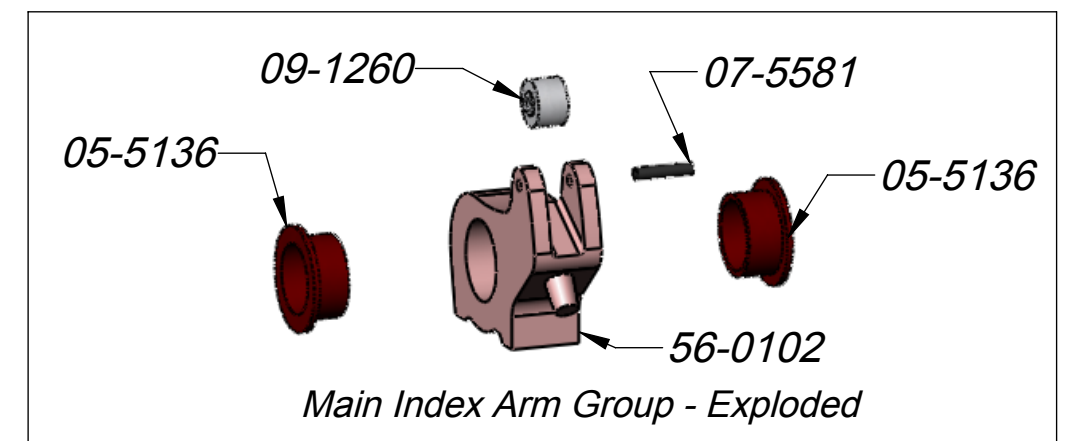
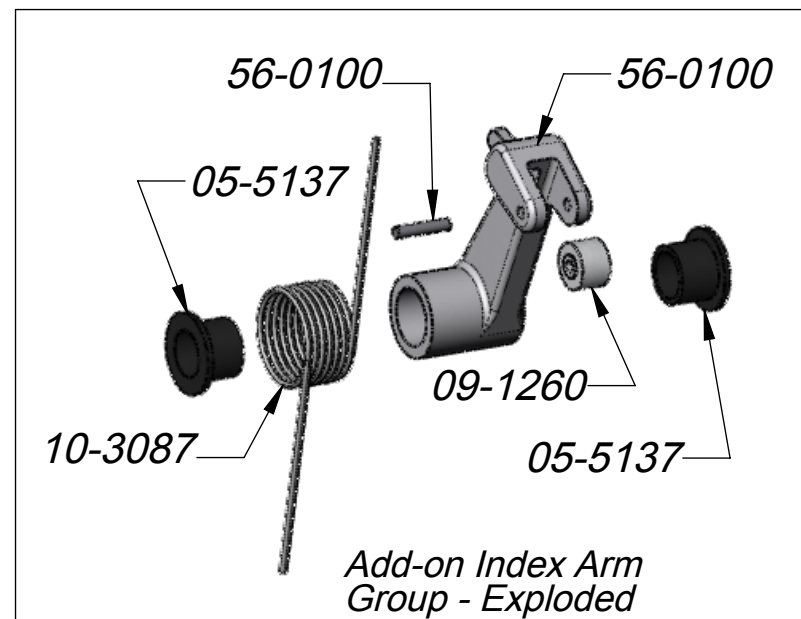
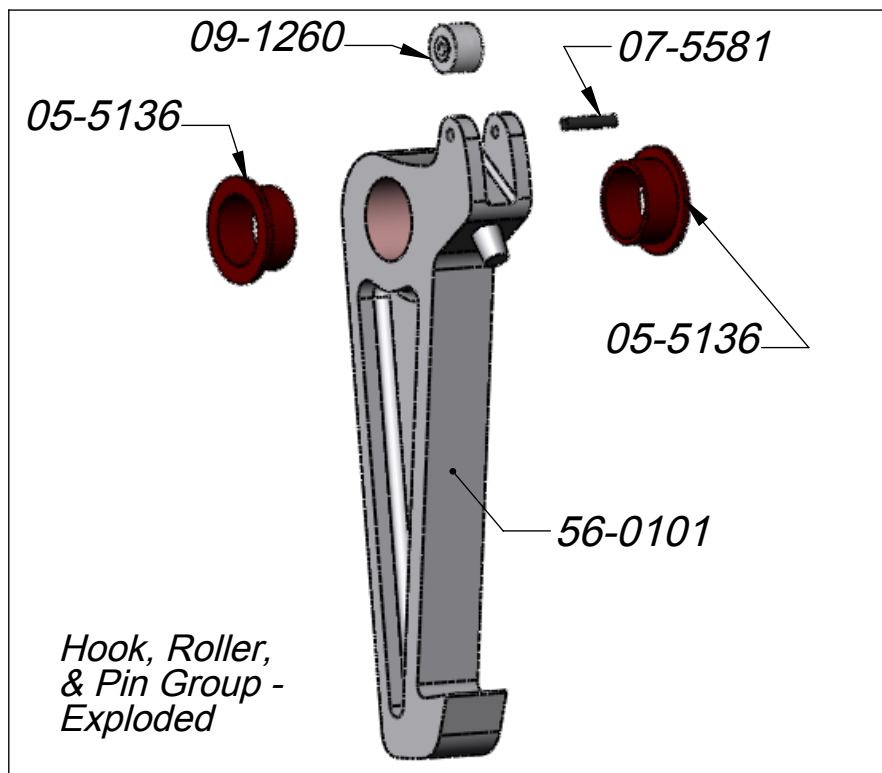
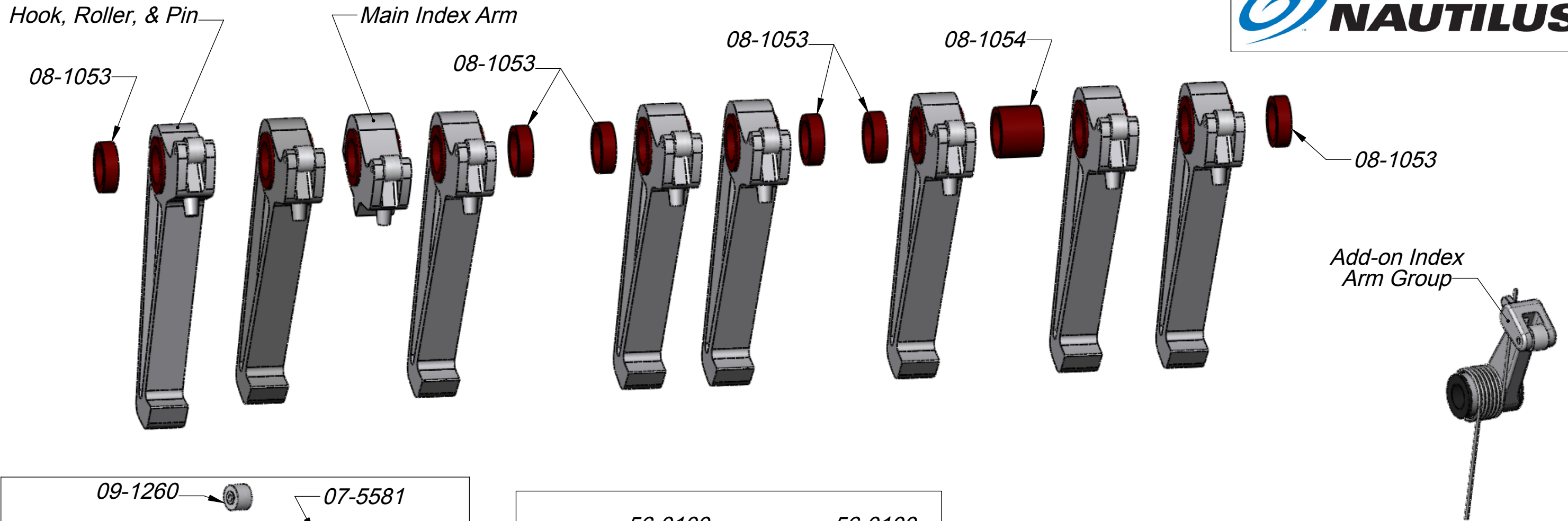
DESIGNED: G. WEBB
DRAWN: G. Webb
DATE: 09/06/07

DO NOT SCALE DRAWING

TITLE: **ENGINE WEIGHT 250 LB 1 LB INCR**
SIZE: **E** PART NO.: **ENGINE-WT-250-1B**

SCALE: 1:2 SHEET 3 OF 7

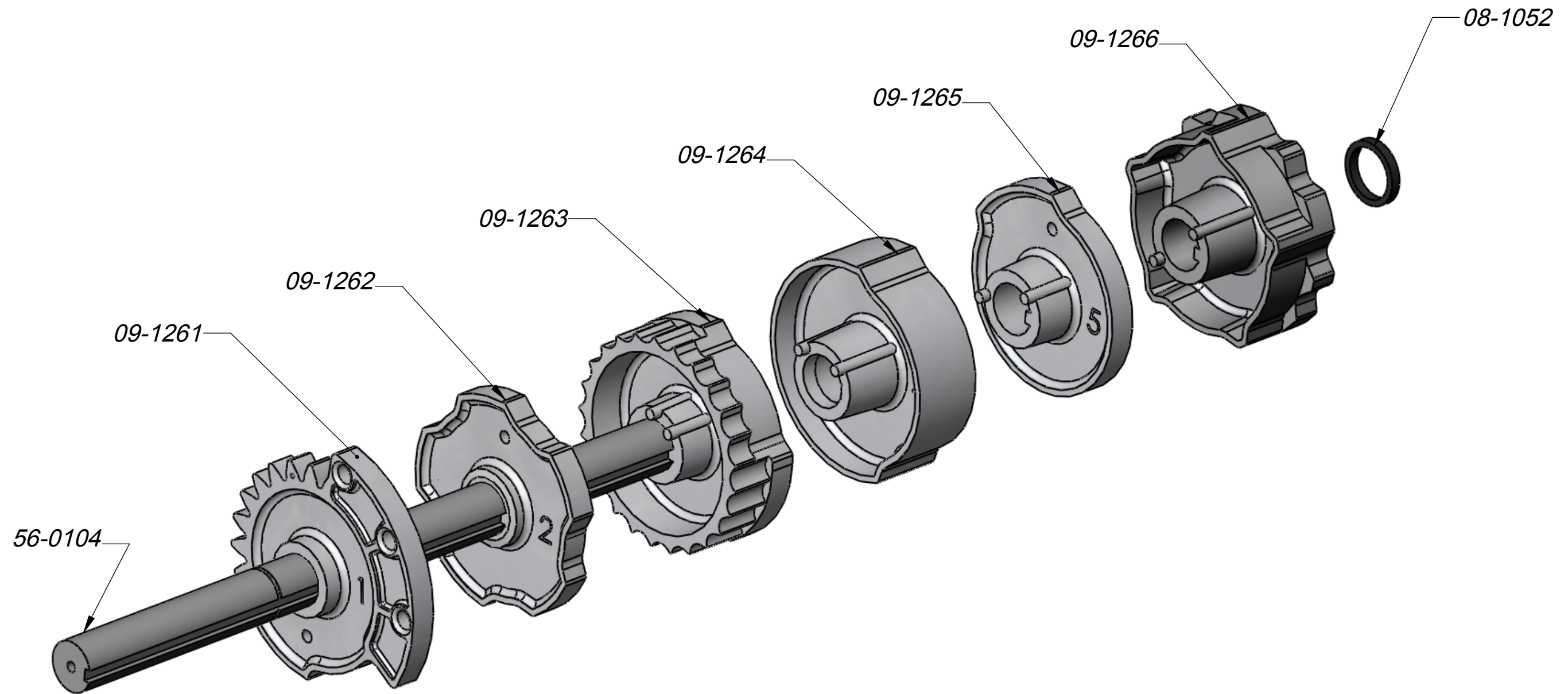
This document is the property of Nautilus, Inc. It may not be reproduced in whole or part, provided to third parties, or used for any purposes other than the performance of work for Nautilus, Inc. without written authorization. All rights are reserved, including copyrights.



Hooks & Index Arms for 250 lb Sys

Nautilus ONE
Engine-WT-250-1
Parts Diagram

Last Rev Date: 08/29/2007

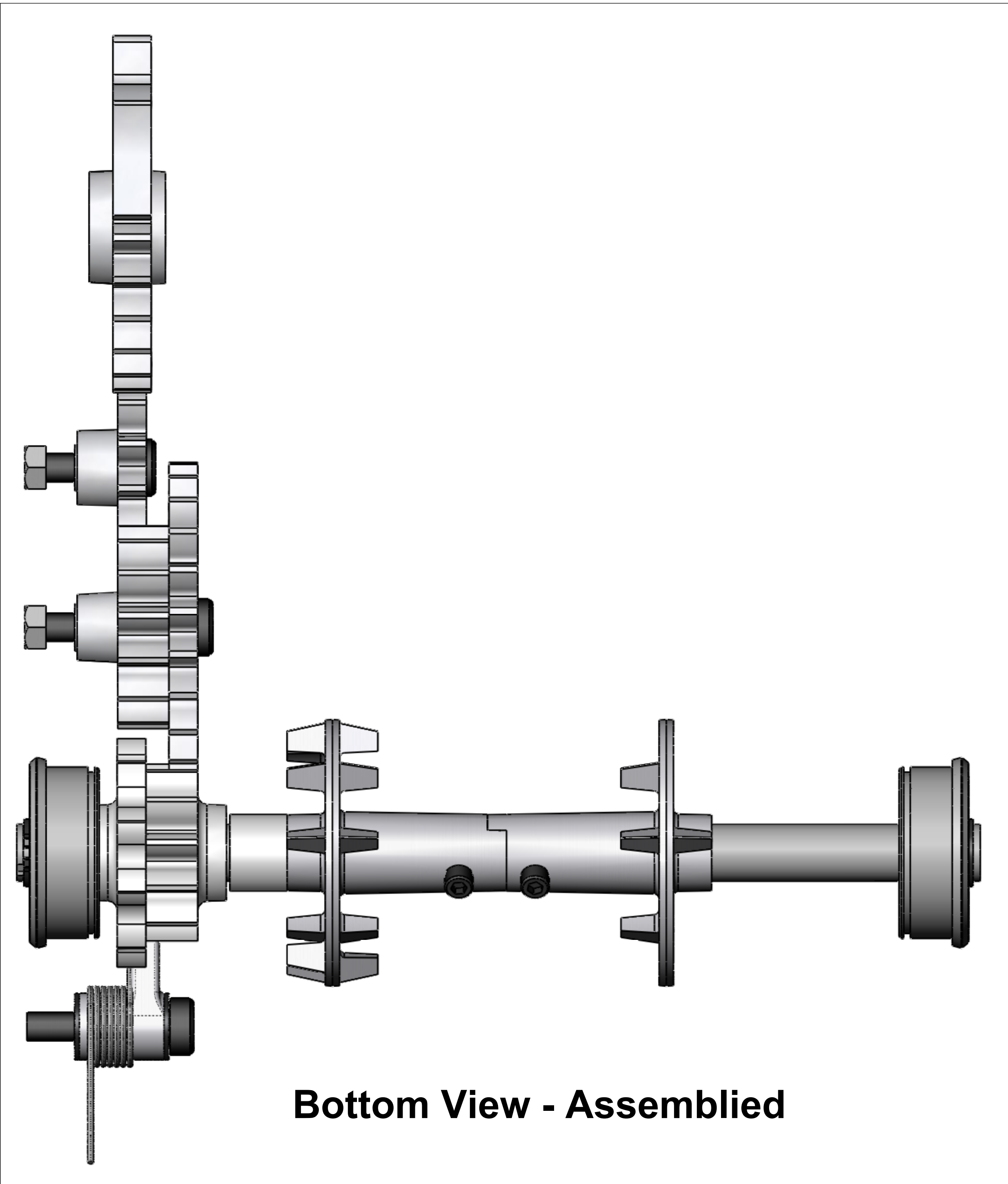


Last Rev Date: 08/29/2007

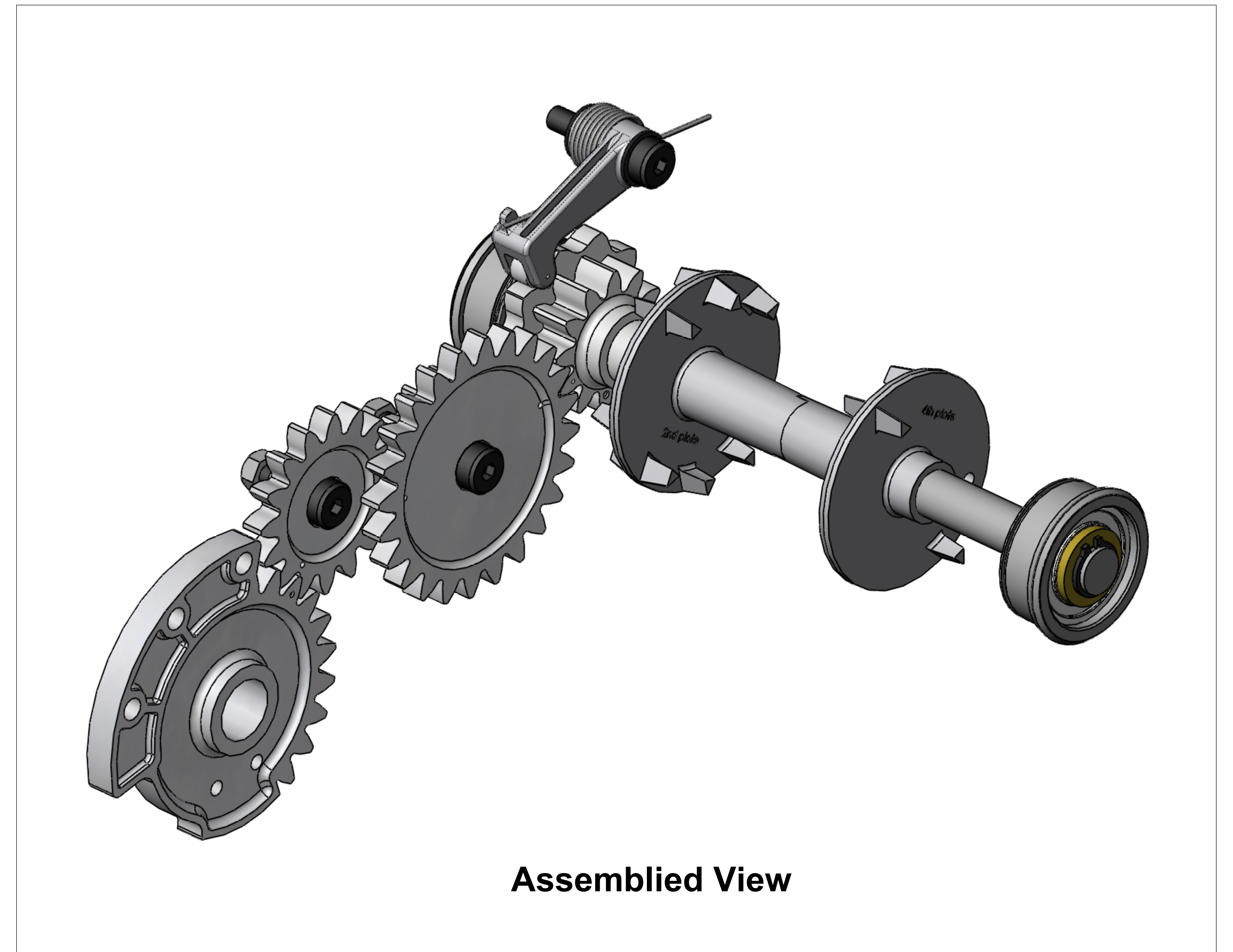
Cam Group for 250 Sys
Nautilus ONE Line
Engine-WT-250-1
Parts Diagram

ENGINE-WT-250-1

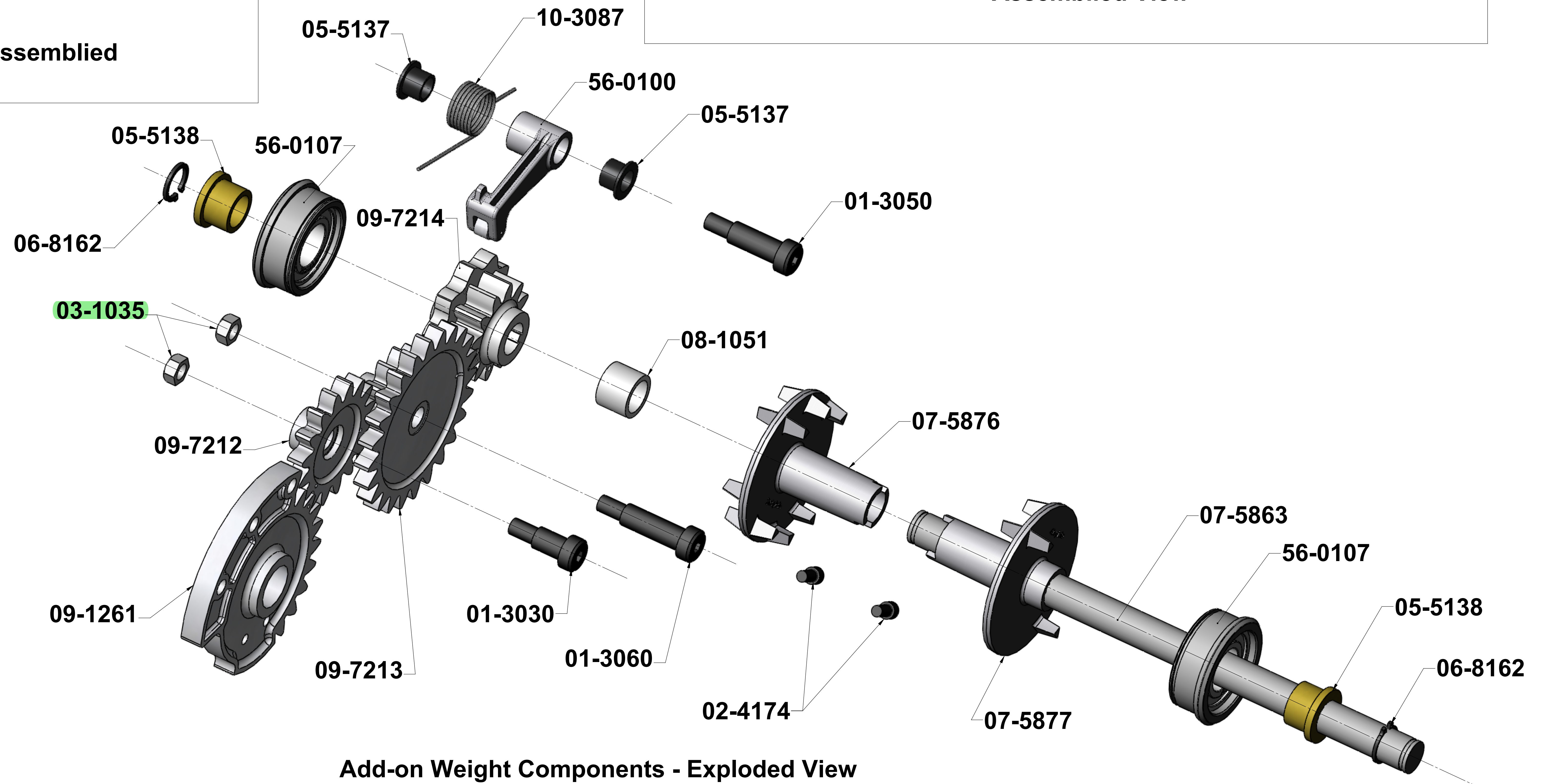
MATERIAL. --
 FINISH. --
 COLOR.



Bottom View - Assembled



Assembled View



Add-on Weight Components - Exploded View

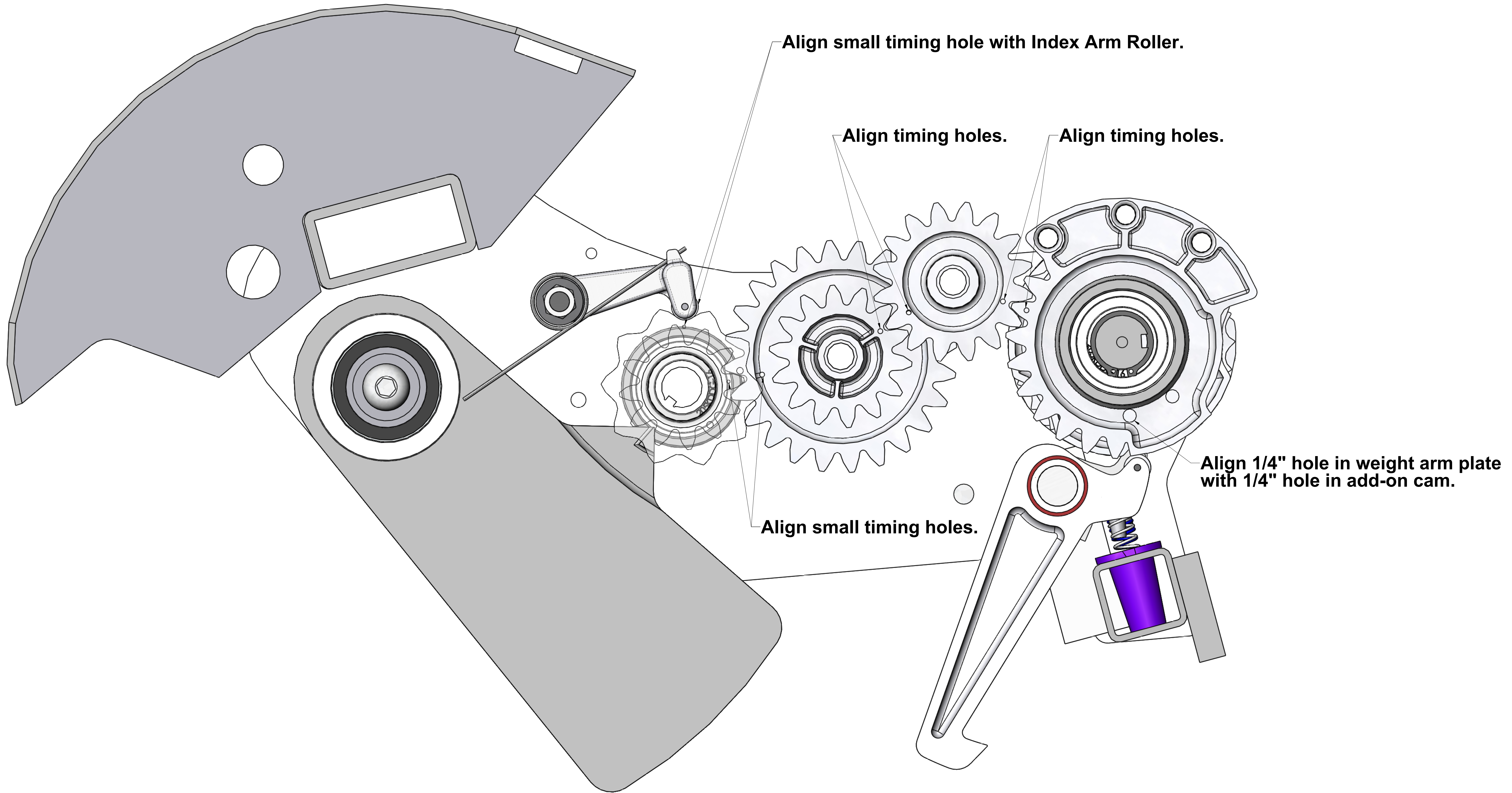
NAUTILUS, INC. 16400 SE NAUTILUS DRIVE, VANCOUVER, WA 98683		UNLESS OTHERWISE SPECIFIED: 1. ALL DIMENSIONS APPLY BEFORE PLATING OR COATING. 2. REMOVE ALL BURRS, BREAK SHARP EDGES: .010 IN MAX. 3. ALL MACHINED SURFACES Ra 125 µIN. 4. ALL APPLICABLE NAUTILUS STANDARDS AND SPECIFICATIONS APPLY.	THIRD ANGLE PROJECTION 	TOLERANCES: X .125 XX .050 XXX .010 XXXX .005 XXXX .002 ANGULAR .1°	DESIGNED G. WEBB	TITLE ENGINE WEIGHT 250 LB 1 LB INCR
					DRAWN G. Webb	SIZE PART NO. ENGINE-WT-250-1B
THIS DOCUMENT IS THE PROPERTY OF NAUTILUS, INC. IT MAY NOT BE REPRODUCED IN WHOLE OR PART, PROVIDED TO THIRD PARTIES, OR USED FOR ANY PURPOSES OTHER THAN THE PERFORMANCE OF WORK FOR NAUTILUS, INC. WITHOUT WRITTEN AUTHORIZATION. ALL RIGHTS ARE RESERVED, INCLUDING COPYRIGHTS.					DATE 09/06/07	SCALE: 1:4
DO NOT SCALE DRAWING						SHEET 6 OF 7

ENGINE-WT-250-1

MATERIAL. --

FINISH. --

COLOR.

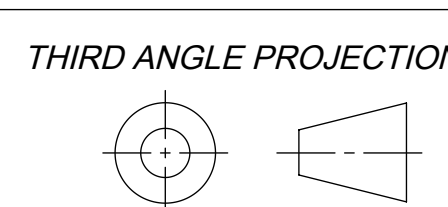


NAUTILUS, INC.
 16400 SE NAUTILUS DRIVE, VANCOUVER, WA 98683



UNLESS OTHERWISE SPECIFIED:
 1. ALL DIMENSIONS APPLY BEFORE PLATING OR COATING.
 2. REMOVE ALL BURRS, BREAK SHARP EDGES: 60° IN MAX.
 3. ALL MACHINED SURFACES R_a 125 μm
 4. ALL APPLICABLE NAUTILUS STANDARDS AND SPECIFICATIONS APPLY.

INCH



TOLERANCES:
 X .125
 XX .050
 XXX .010
 XXXX .005
 XXXX 1/64
 ANGULAR 1°

DESIGNED	G. WEBB
DRAWN	G. Webb
DATE	09/06/07

TITLE	ENGINE WEIGHT 250 LB 1 LB INCR
SIZE	E
PART NO.	ENGINE-WT-250-1B