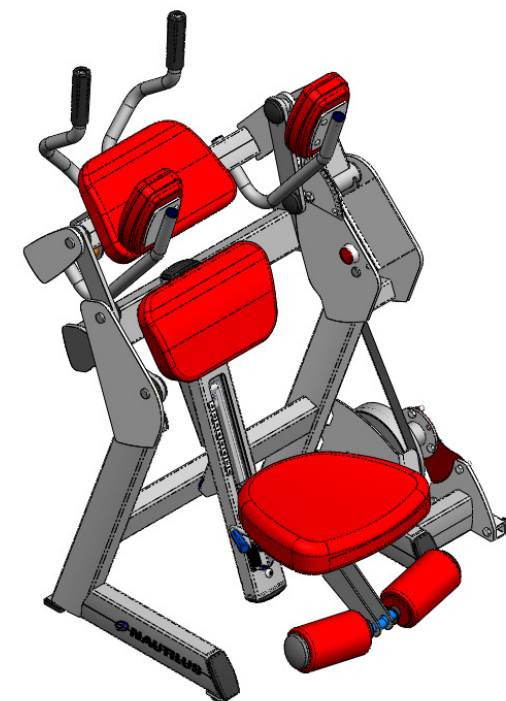


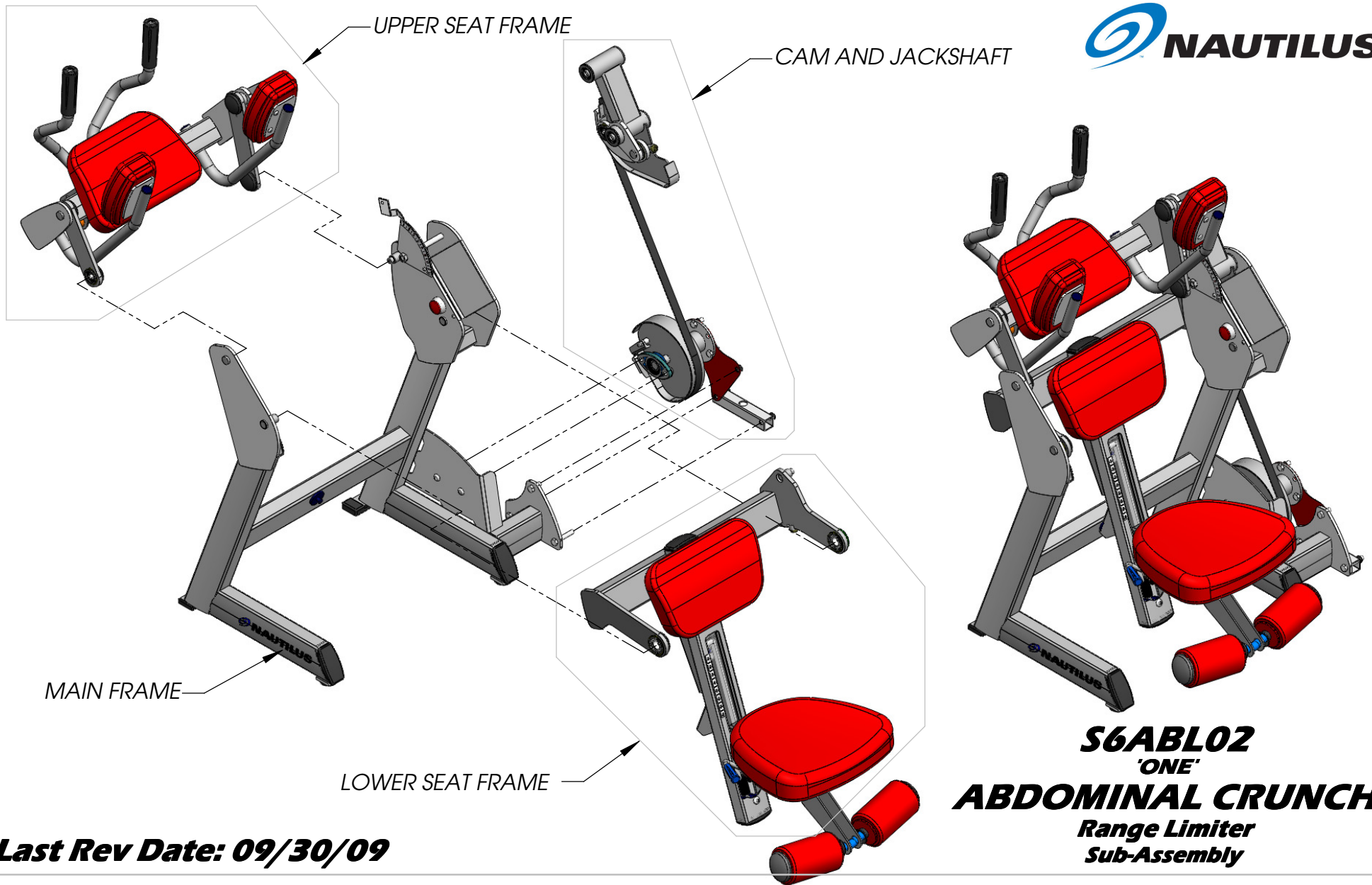
NO.	Abdominal Range Limiter Default/QTY.	DESCRIPTION
01-1271	3	1/2 -13 UNC x 1 1/4 Bolt
01-1331	3	1/2 -13 UNC x 2 1/4 Bolt
01-1522	1	5/8-11 UNC x 6 5/8 Bolt
01-1548	7	3/8 -16 UNC x 3/4 Wiz Lock Bolt
01-1552	2	3/8 -16 UNC x 4 Bolt
01-2270	1	5/8-11 UNC x 7 Bolt
01-3060	1	SHSS 1/2" x 1 1/2"
01-4030	6	1/4 -20 UNC x 1 Wiz Lock Bolt
01-4036	2	BUTTON HEAD SOCKET CAP SCREW, 3/8 -16 x 3/4" BRIGHT ZINC
01-4050	4	BUTTON HEAD SOCKET CAP SCREW 1/4 -20 x 3/4" BRIGHT ZINC
01-4051	1	BUTTON HEAD SOCKET CAP SCREW, 3/8 -16 x 1" BRIGHT ZINC
01-4062	8	BUTTON HEAD SOCKET CAP SCREW 3/8-16 x 1 1/4" BRIGHT ZINC
01-4063	1	BUTTON HEAD SOCKET CAP SCREW 3/8 -16 x 2 1/2" BRIGHT ZINC
01-4075	2	BUTTON HEAD SOCKET CAP SCREW, 1/2 -13 x 1 1/4" BRIGHT ZINC
01-4081	1	BUTTON HEAD SOCKET CAP SCREW 1/2 -13 UNC x 3/4" BRIGHT ZINC
02-2290	2	SCW-FHSCS 0250-20x1.25 G8-SS
02-4147	1	BUTTON HEAD SOCKET CAP SCREW, 1/2 -20 x 2" UNF BRIGHT ZINC
03-1035	4	3/8" Lock Nut
03-1055	4	1/2" Lock Nut
03-1067	2	5/8" Lock Nut
03-4290	4	1/4" Whiz Nut
03-5104	3	1/2" Hex Nut
03-5106	1	10mm Jam Nut
03-9070	1	1/2" Hex Jam Nut Thin
04-2015	2	WASHER, FLAT, 1/4" SAE Black
04-6000	4	Washer Wave
05-1190	2	Bronze Bushing
05-5130	2	IGUS BEARING 1/2 ID X 1/4 LONG
06-8162	2	SNAP RING 3/4" EXTERNAL
06-8163	2	SNAP RING EXTERNAL
06-8166	6	SNAP RING EXTERNAL
07-4905	1	Efson PF1008
07-5064	4	6203 RADIAL BEARING
07-6021	1	3/4" LOCK COLLAR
07-8135	1	5/16" RUE RING COTTER - RUE-10
07-9607	10	MOLDED BEARING CUP
07-9764	1	AB LINKAGE
07-9771	4	IDLER PULLEY SPACER
07-9849	2	MOLDED BEARING CAP, TI SERIES
07-9876	2	1" BEARING MOLDED FLANGE
08-2053	2	Movement Arm Hub Spacer
08-2056	2	MOLDED SHAFT SPACER
09-1210	3	Plug Frame 2 X 4 "ONE"
09-1224	1	GRIP ASSEMBLY HYD SEAT ADJUSTMENT
09-2060	1	1 1/2 X 3 11 GA FRAME PLUG
09-3069	2	1/2" DIA HOLE PLUG BLACK
09-3084	4	HOLE PLUG 1.25 OD X 1.0 ID X .75
09-3093	1	PLUG HOLE RED 1 3/4 OD X 1 3/8 ID X .5 LONG
09-4004	2	MOLDED UPH. ROLLER END CAP
09-4092	3	BUMPER
09-5030	3	FOOTPAD MOLDED BLACK
09-5035	2	MOLDED FOOTPAD
09-5901	4	CAP MOLDED 07-9607 BEARING

NO.	Abdominal Range Limiter Default/QTY.	DESCRIPTION
09-7205	1	SPACER1 1/4 OD X 3/4 ID X 3/4 L
09-9007	1	Sleeve
09-9590	2	TUBE INSERT .760 ID PN3043-4-1
09-9600	2	TUBE INSERT 1.010 ID PN3045-4-1
10-3049	1	SPRING GAS LOCKING
10-3082	2	SPRING TORSION 1.301 OD X 2.126 L (mfg# LTL135T-03-M)
12-1173	1	SEAT ADJUSTMENT DECAL 1-11
12-1201	1	Decal RL- S6ABC
12-5619	1	TRANSFER DECAL NAUTILUS X-SMALL BLACK
12-5627	1	S6 INSTRUCTION PLACARD S6ABC
12-5628	1	S6 LENTICULAR S6ABC
12-5669	1	S6 INSTRUCTION PLACARD FOAM
19-1021	1	Double-sided adhesive 1/32"
24-6035	1	Belt for S6AB
32-0001	1	PAD SEAT STANDARD "ONE" CONTOURED
32-0002	1	UPH.BACK PAD S6AB
32-0003	1	UPH. MOVEMENT ARM S6AB
32-0004	2	UPH. ELBOW PAD S6AB
56-0030	1	LINK CONTROL SEAT
56-0031	1	LINK CONTROL SEAT CURVED
56-0033	1	SHAFT MOVEMENT ARM HANDLE
56-0034	1	CLAMP BELT 1"
56-0038	4	WASHER
56-0094	1	SHIELD WORKBOX
56-0115	1	CAP END AXIS INDICATOR
56-0124	2	SLEEVE BEARING
56-0174	1	Clamp mount
56-0181	1	CLAMP BELT ADJUSTABLE
56-0217	2	Clamp Belt ONE
56-0339	1	BRACKET SHOCK MOUNT
56-0341	4	ROLLER SEAT 2" X 4" PROFILE TUBE
56-0342	4	Spacer Shaft 17mm
56-0345	1	Link Seat
56-0348	2	Plug Frame 4" Angled 60 DEG
56-0351	1	CLEVIS PIN, 5/16" X 1 1/4"
56-0365	1	Jack Shaft Support
56-0368	1	Caster Mount
56-0389	1	Plate Mount Decal - S6ABC-RL
56-0390	1	Bracket Indicator- S6ABC-RL
56-0391	2	GRIP MOLDED LARGE 1 1/4" I.D.
56-0392	2	CAP END DECORATIVE
56-0404	1	HANDLE STOP
56-0411	1	PIN RETAINING 3/4 DIA
56-0412	1	PIN SHOCK RELEASE 3D BENT 3/16 DIA
60-1200	1	BACK FRAME S6AB02
62-1200	1	HANDLEBAR WELDMENT
62-1213B	1	HANDLE SEAT RELEASE
64-1204B	1	MOVEMENT ARM
64-1205	1	MOVEMENT ARM CAM
65-1201B	1	SEAT S6AB02
65-1203B	1	SEAT CARRIAGE S6ABC2
67-1204B	1	Jackshaft Weight Drive
91-999	1	Paint (1.5 lbs)
UP8070	2	UPHOLSTERY ROLLER



**S6ABL02**  
**'ONE'**  
**ABDOMINAL CRUNCH**  
**Range Limiter**  
**Parts Diagram**

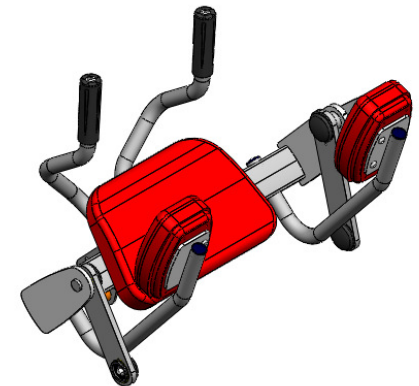
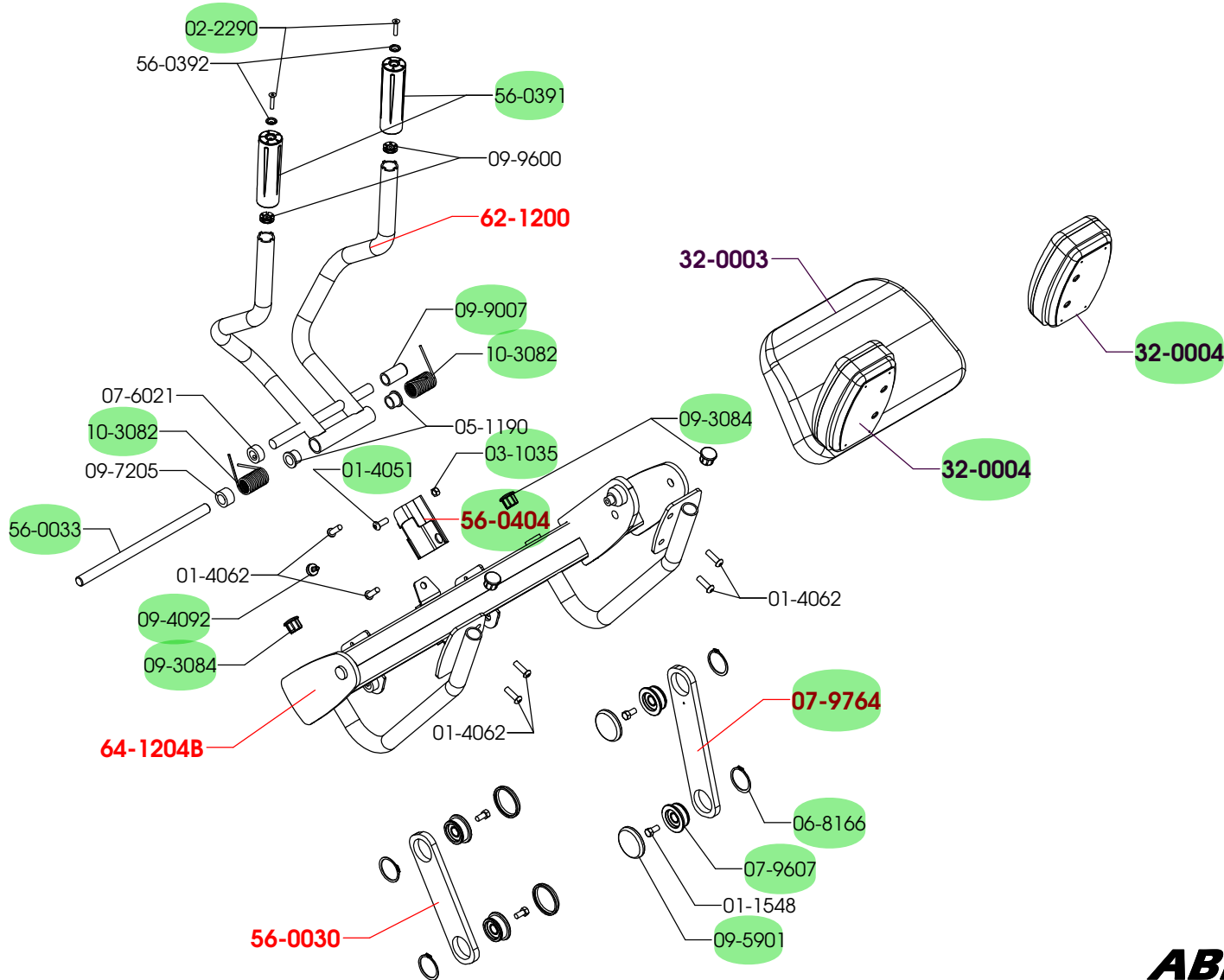
**Last Rev Date: 09/30/09**



**Last Rev Date: 09/30/09**



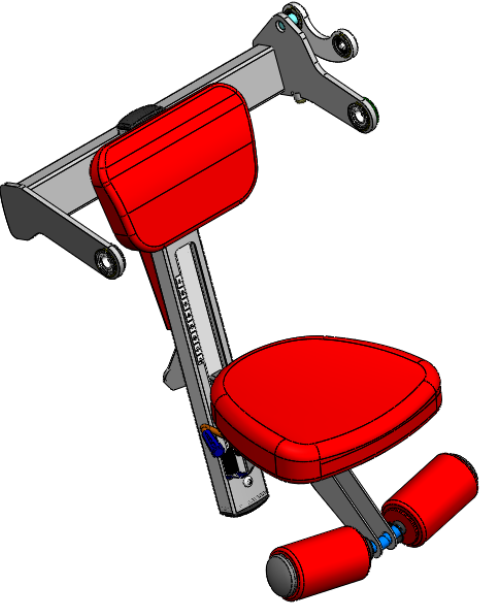
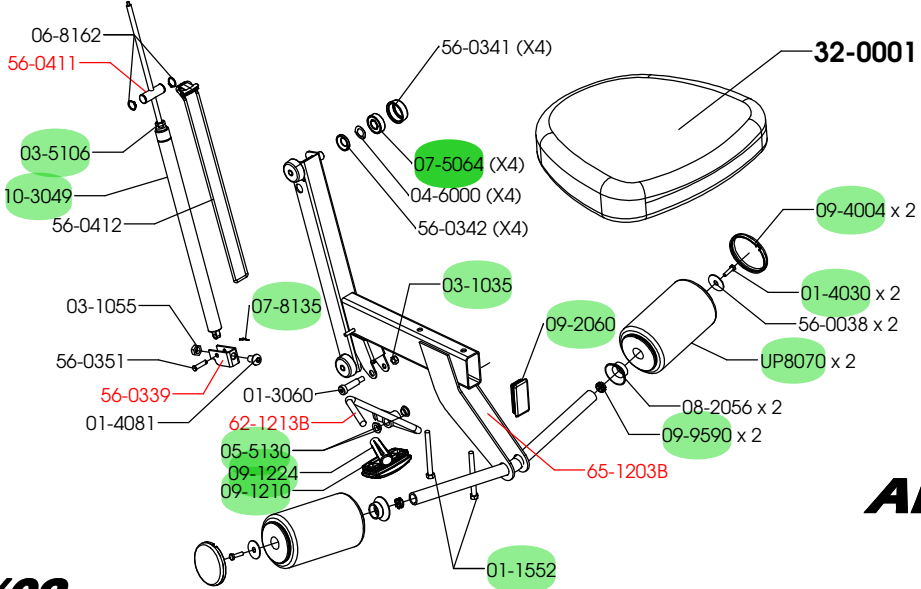
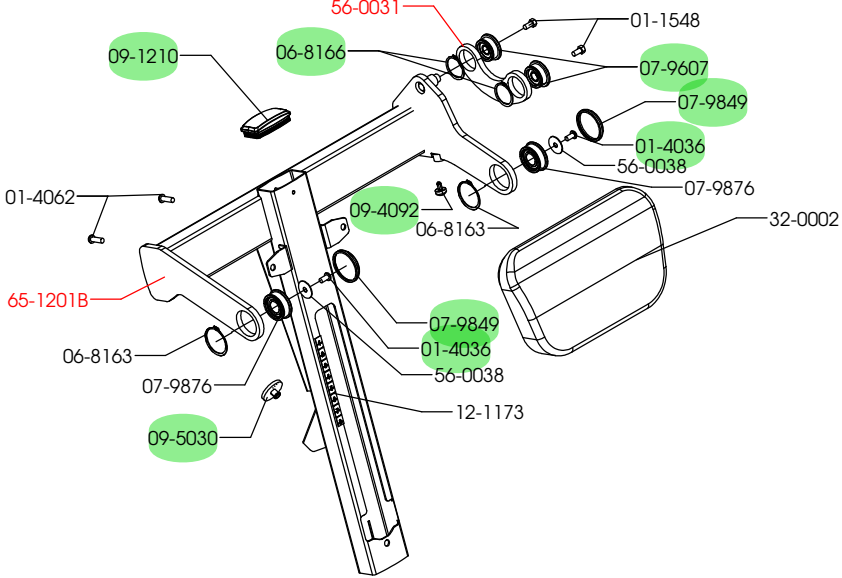
**BLACK BOLD NUMBERS  
INDICATE UPHOLSTERY  
RED BOLD NUMBERS ARE  
POWDERED COATED**



**S6ABL02**  
**'ONE'**  
**ABDOMINAL CRUNCH**  
**Range Limiter**  
**Upper Seat Frame Assembly**

**Last Rev Date: 09/30/09**

**BLACK BOLD NUMBERS  
INDICATE UPHOLSTERY**  
**RED BOLD NUMBERS ARE  
POWDERED COATED**

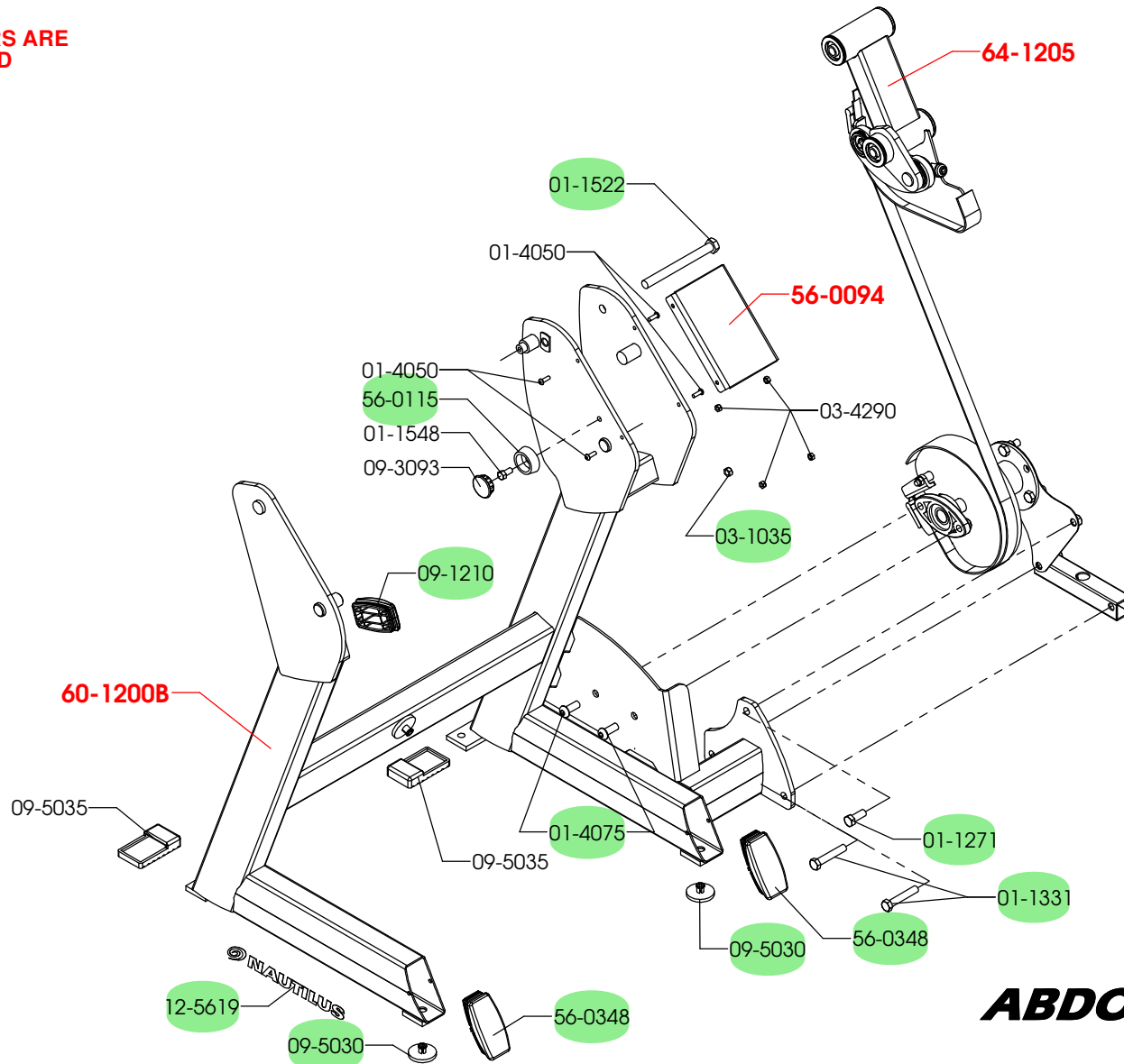


**S6ABL02**  
**'ONE'**  
**ABDOMINAL CRUNCH**  
**Range Limiter**

**Lower Seat Frame Assembly**

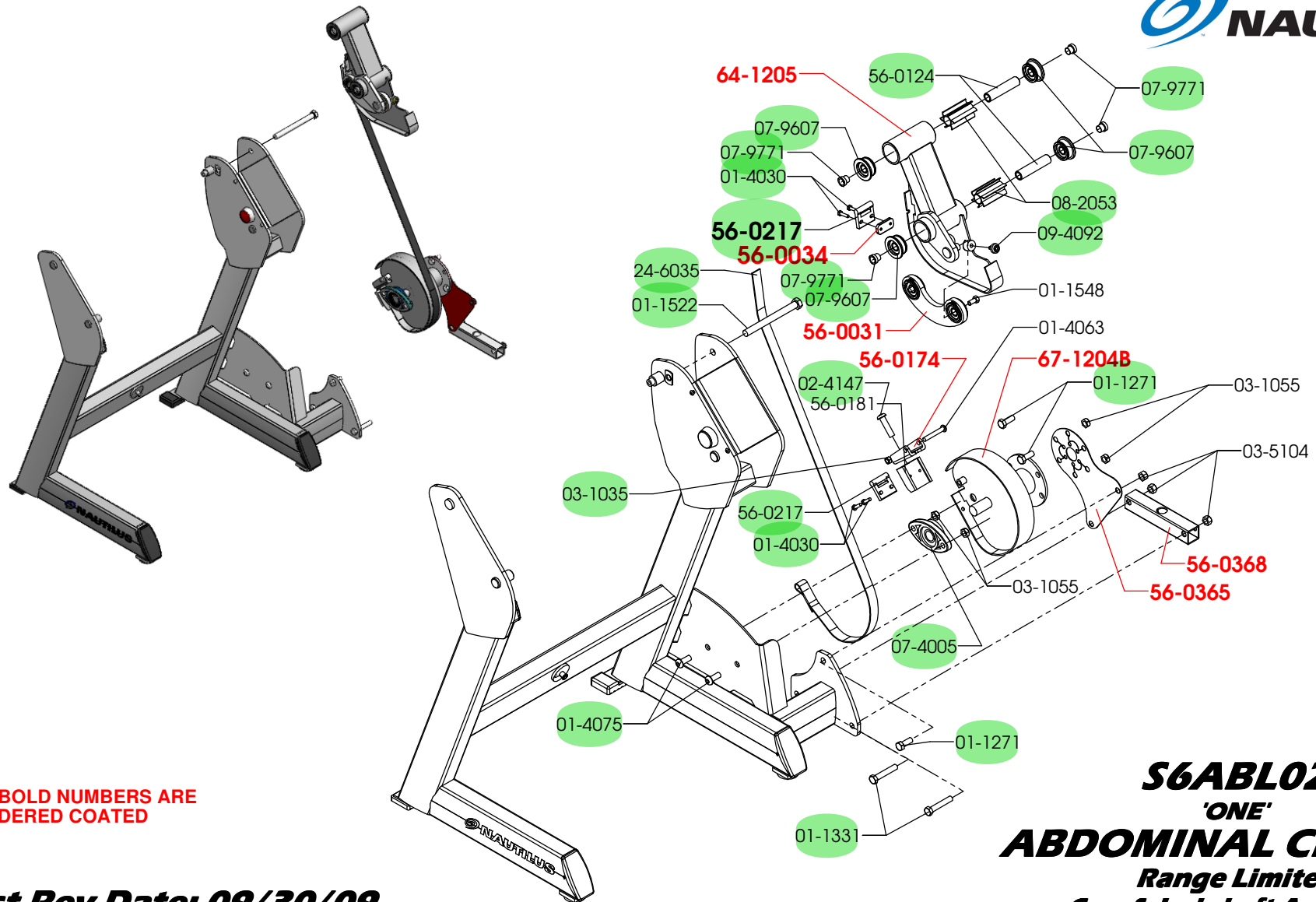
**Last Rev Date: 09/30/09**

RED BOLD NUMBERS ARE  
POWDERED COATED



**Last Rev Date: 09/30/09**

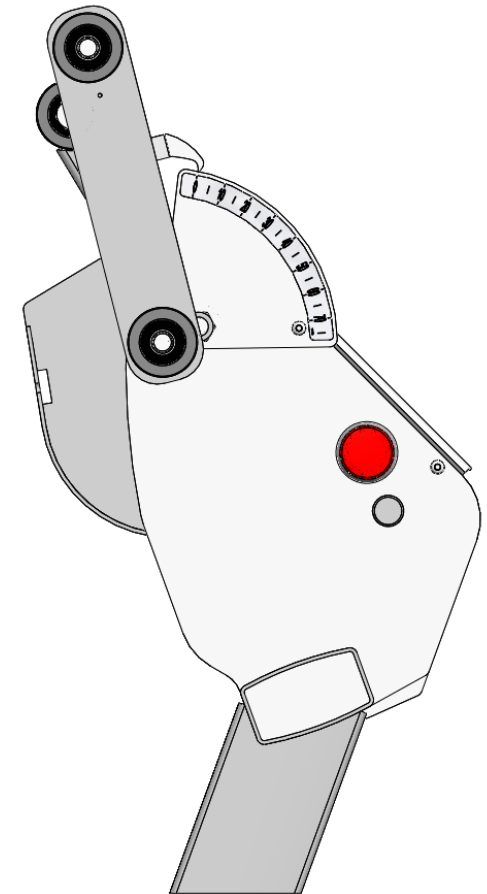
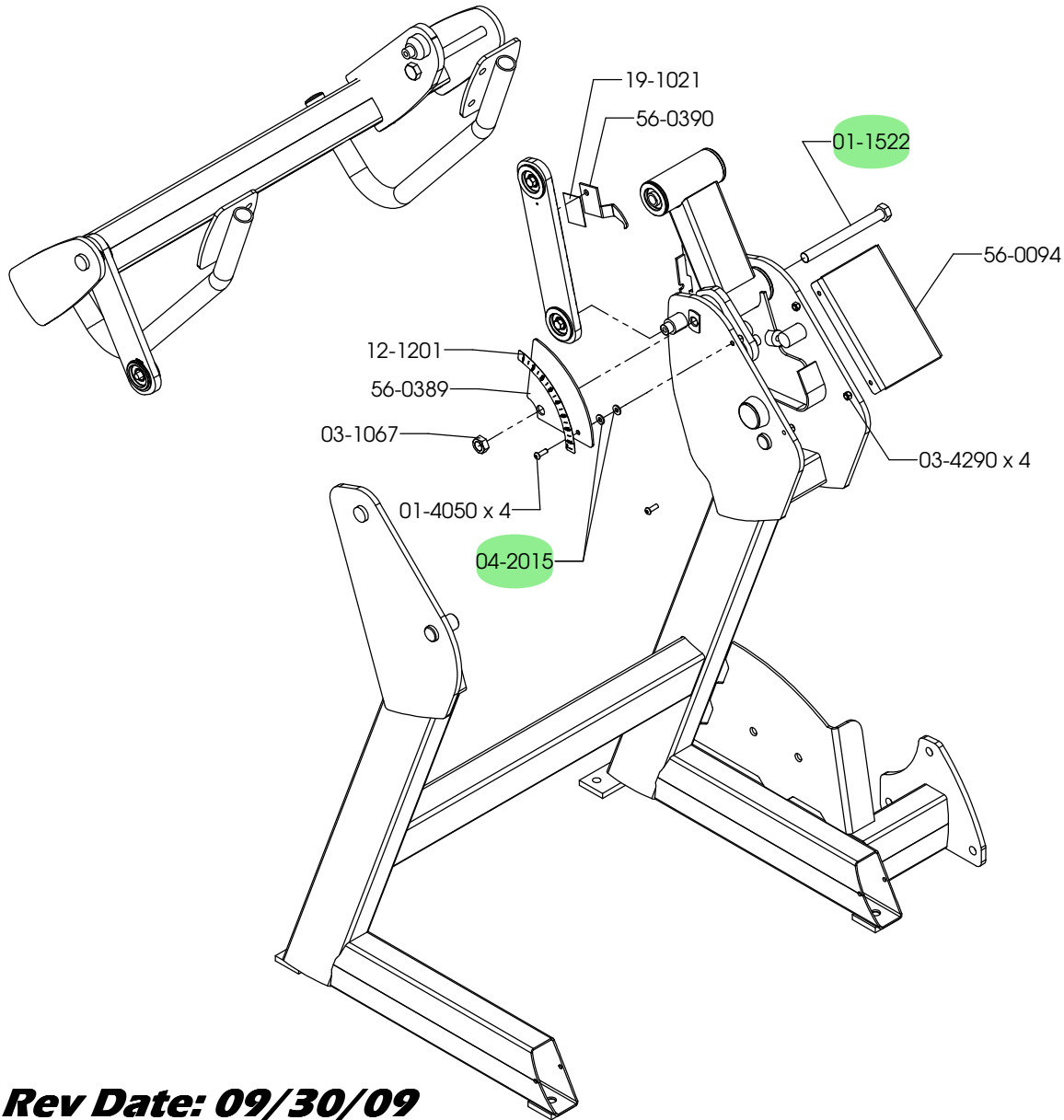
**S6ABL02**  
**'ONE'**  
**ABDOMINAL CRUNCH**  
**Range Limiter**  
**Main Frame Assembly**



RED BOLD NUMBERS ARE  
POWDERED COATED

**Last Rev Date: 09/30/09**

**S6ABL02**  
**'ONE'**  
**ABDOMINAL CRUNCH**  
**Range Limiter**  
**Cam & Jackshaft Assembly**



**Last Rev Date: 09/30/09**

**S6ABLO2**  
**'ONE'**  
**ABDOMINAL CRUNCH**  
**Range Limiter**