

This document contains information proprietary to Magnum Fitness Systems. It is submitted in confidence and is to be used solely for the purpose for which it is furnished. This document and such information is not to be reproduced, transmitted, or used in whole or part without written authorization.

TOLERANCES: + 0.000"
- 1/16"

UNLESS OTHERWISE SPECIFIED
DIMENSIONS ARE IN INCHES.

DRAWN BY:
R. Degenhardt

MAGNUM FITNESS SYSTEMS

2201 12th. Avenue
S. Milwaukee, WI, 53172

TITLE: 3022 - CHEST PRESS

DATE:
11/24/04

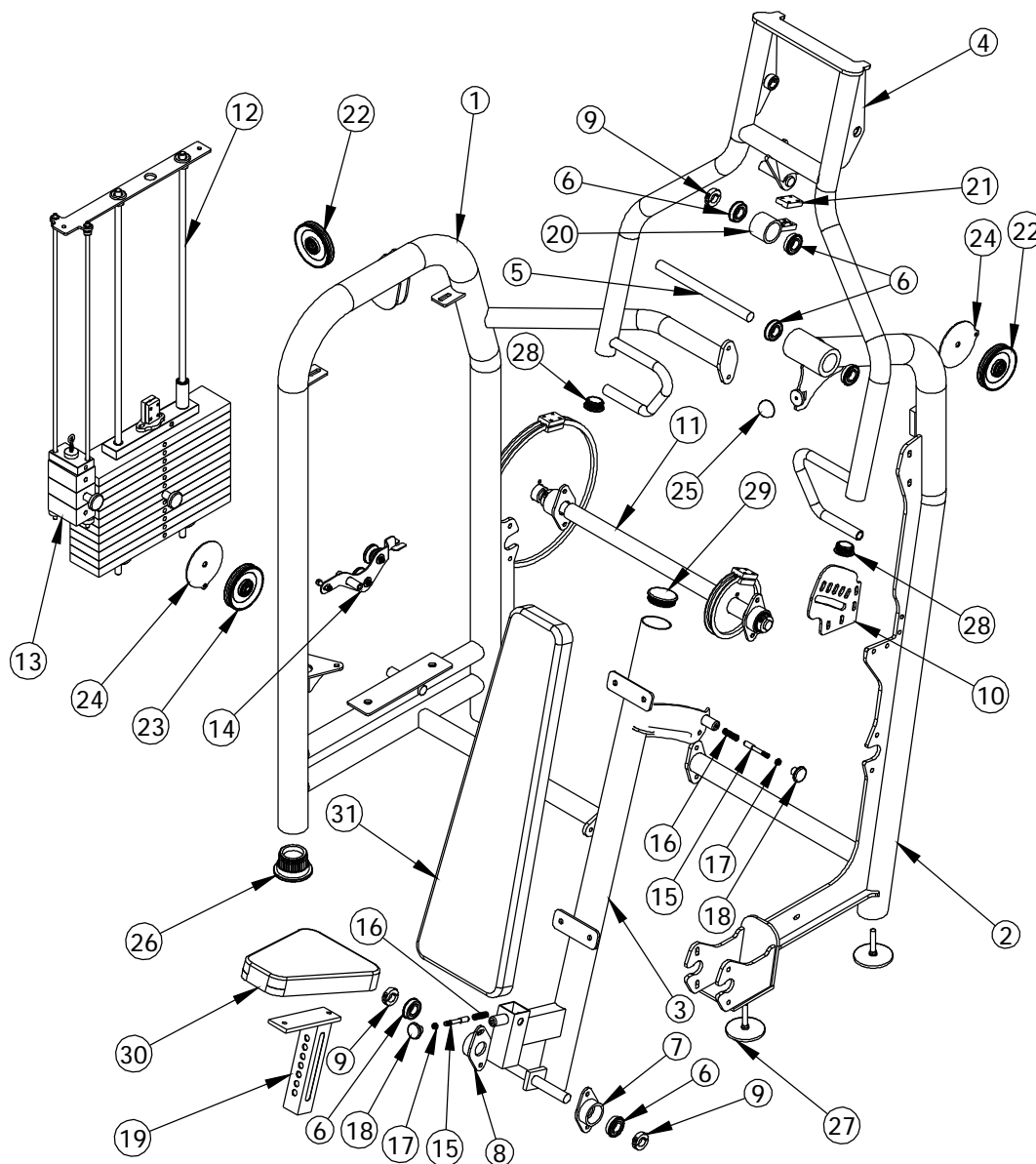
PART NO.
xxx-xxx

JOB NO.
XXXXXXXX

REV:
1

FILE LOCATION: C:\Cad Drawings\Solid Works\

1 OF 3



This document contains information proprietary to Magnum Fitness Systems. It is submitted in confidence and is to be used solely for the purpose for which it is furnished. This document and such information is not to be reproduced, transmitted, or used in whole or part without written authorization.

TOLERANCES: + 0.000"
- 1/16"

UNLESS OTHERWISE SPECIFIED
DIMENSIONS ARE IN INCHES.

DRAWN BY:
R. Degenhardt

MAGNUM FITNESS SYSTEMS

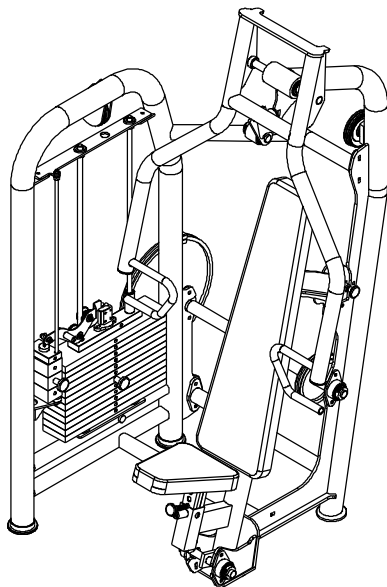
2201 12th. Avenue
S. Milwaukee, WI, 53172

TITLE: 3022 - CHEST PRESS

DATE: 11/24/04	PART NO. xxx-xxx	JOB NO. XXXXXXXX	REV: 1
-------------------	---------------------	---------------------	-----------

FILE LOCATION: C:\Cad Drawings\Solid Works\

2 OF 3



ITEM NO.	QTY.	PART NO.	DESCRIPTION
1	1	100-897	MAIN FRAME SUB-ASSEMBLY
2	1	101-243	2222 MAIN FRAME SUB-ASSEMBLY
3	1	101-246	3022 SEAT PIVOT
4	1	101-245	3022 MAIN ARM
5	1	200-418	1" CRR - 12 3/4"
6	6	851-416	FLANGE BEARING - 1"
7	1	100-880	BEARING HOUSING
8	1	101-040	BEARING HOUSING
9	3	852-717	1" SPLIT COLLAR
10	1	339-014	1/4" PLASMA - CHROMED
11	1	101-296	3022 CAM ASSEMBLY
12	1	101-290	WEIGHT STACK ASSEMBLY
13	1	101-288	MINI WEIGHT STACK ASSEMBLY
14	1	101-278	3000 SERIES BANANA (LEFT)
15	2	855-302	SPRING PIN w/ 5/32"
16	2	852-807	SPRING
17	2	817-306	3/8"-16 JAM NUT
18	2	852-207	GOLD PULL KNOB
19	1	339-708	SEAT POST - CHROMED
20	1	100-904	CABLE CLIP ASSEMBLY
21	1	339-714	1/2" x 1 1/2" F.S. - 2 1/4"
22	2	853-303	4" CABLE PULLEY - 3/8" NARROW HOLE
23	1	853-300	4" CABLE PULLEY - 1/2" NARROW HOLE
24	2	601-125	1/8" PLASMA
25	1	838-223	HALF-ROUND RUBBER BUMPER
26	2	850-056	3" FOOT
27	2	833-129	4" FOOT (LONG)
28	2	850-035	2" ROUND END CAP
29	1	850-045	3" ROUND END CAP
30	1	900-005	UPHOLSTERY
31	1	901-042	UPHOLSTERY

This document contains information proprietary to Magnum Fitness Systems. It is submitted in confidence and is to be used solely for the purpose for which it is furnished. This document and such information is not to be reproduced, transmitted, or used in whole or part without written authorization.

TOLERANCES: + 0.000"
- 1/16"

UNLESS OTHERWISE SPECIFIED
DIMENSIONS ARE IN INCHES.

DRAWN BY:
R. Degenhardt

DATE:
11/24/04

PART NO.
xxx-xxx

JOB NO.
XXXXXXXX

REV:
1

MAGNUM FITNESS SYSTEMS

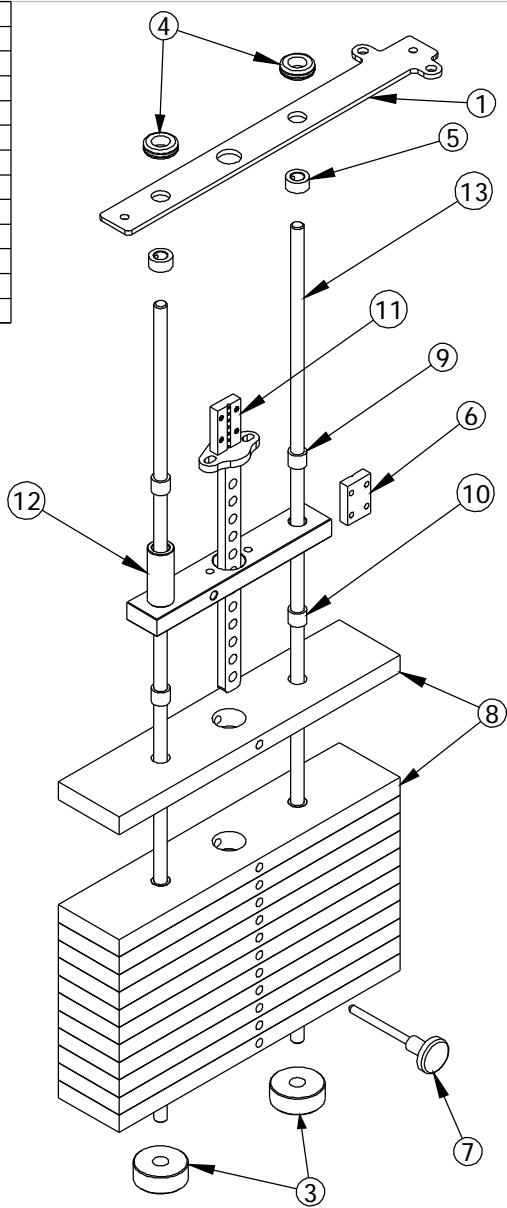
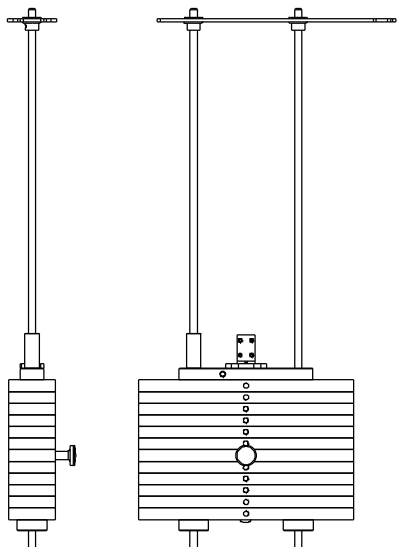
2201 12th. Avenue
S. Milwaukee, WI, 53172

TITLE: 3022 - CHEST PRESS

FILE LOCATION: C:\Cad Drawings\Solid Works\

3 OF 3

ITEM NO.	QTY.	PART NO.	DESCRIPTION
1	1	500-963	1/4" PLASMA
3	2	838-211	ROUND WEIGHT STACK BUMPER
4	2	858-005	5/8" RUBBER GROMMET
5	2	852-610	5/8" SET COLLAR
6	1	339-714	1/2" x 1 1/2" F.S. - 2 1/4"
7	1	852-007	SELECTOR PIN w/ 6 1/2" CORD
8	12	300-410	1" x 4" F.S. - 18 1/2"
9	2	849-001	7/8"OD x 5/8"ID x 3/4" BUSHING
10	24	849-002	7/8"OD x .640"ID x 3/4" BUSHING
11	1	101-277	CENTER STICK - 10
12	1	101-129	TOP WEIGHT PLATE
13	2	200-389	5/8" GUIDE ROD - 46 1/2"



This document contains information proprietary to Magnum Fitness Systems. It is submitted in confidence and is to be used solely for the purpose for which it is furnished. This document and such information is not to be reproduced, transmitted, or used in whole or part without written authorization.

TOLERANCES: + 0.000"
- 1/16"

UNLESS OTHERWISE SPECIFIED
DIMENSIONS ARE IN INCHES.

MAGNUM FITNESS SYSTEMS
2201 12th. Avenue
S. Milwaukee, WI, 53172

**TITLE: WEIGHT STACKE ASSEMBLY
62" FRAME - 12 PLATE**

DRAWN BY:
RAD

DATE:
11/12/04

PART NO.
101-289

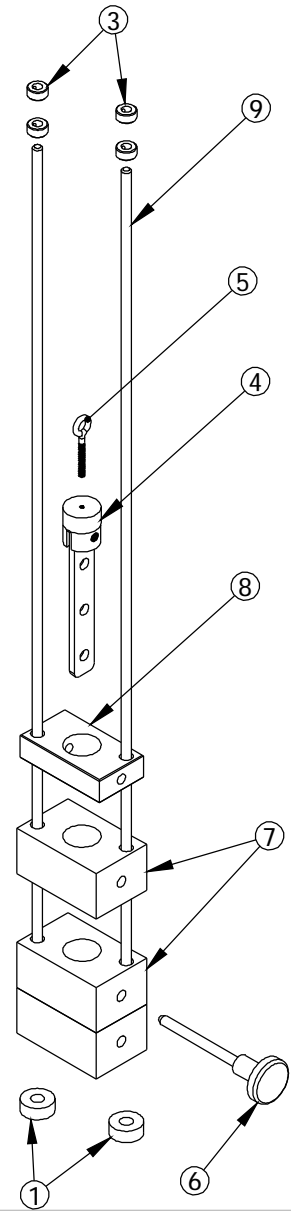
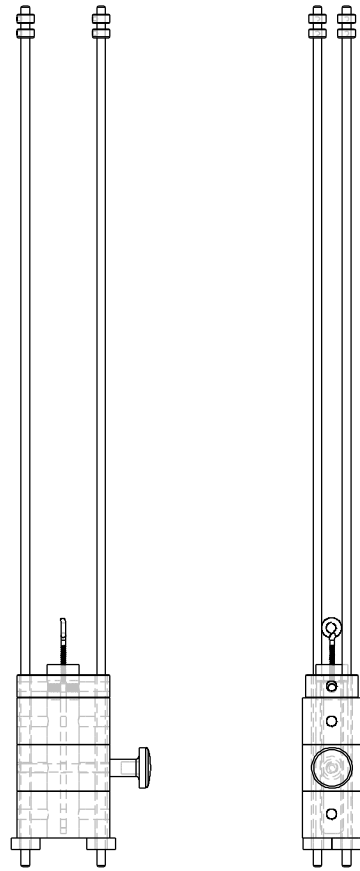
JOB NO.
XXXXXXXXX

REV:
1

FILE LOCATION: C:\Cad Drawings\Solid Works\

1 OF 1

ITEM NO.	QTY.	PART NO.	DESCRIPTION
1	2	858-251	1/2" RUBBER BUMPER
3	4	852-607	3/8" SHAFT COLLAR
4	1	101-053	MINI WEIGHT STACK CENTER STICK
5	1	818-899	3/8" EYE BOLT - 2 1/2"
6	1	852-008	SELECTOR PIN w/ 4" CORD
7	3	300-413	2" x 4" F.S. - 2 9/16"
8	1	807-001	1" x 2 1/4" F.S. - 4"
9	2	200-394	3/8" GUIDE ROD - 37"



This document contains information proprietary to Magnum Fitness Systems. It is submitted in confidence and is to be used solely for the purpose for which it is furnished. This document and such information is not to be reproduced, transmitted, or used in whole or part without written authorization.

TOLERANCES: + 0.000"
- 1/16"

UNLESS OTHERWISE SPECIFIED
DIMENSIONS ARE IN INCHES.

DRAWN BY:
RAD

MAGNUM FITNESS SYSTEMS
2201 12th. Avenue
S. Milwaukee, WI, 53172

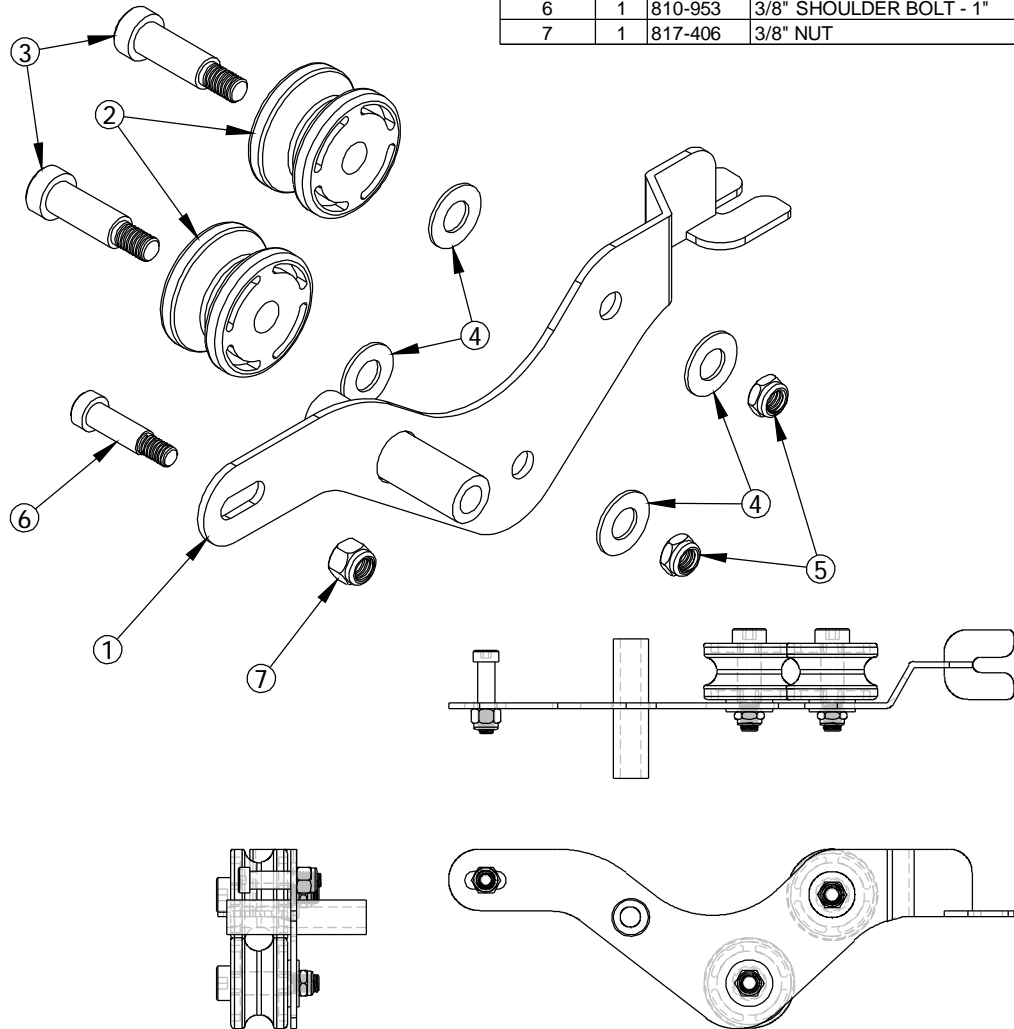
TITLE: MINI WEIGHT STACK ASSEMBLY

DATE: 11/17/04	PART NO. 101-288	JOB NO. XXXXXXXX	REV: 1
-------------------	---------------------	---------------------	-----------

FILE LOCATION: C:\Cad Drawings\Solid Works\

1 OF 1

ITEM NO.	QTY.	PART NO.	DESCRIPTION
1	1	101-276	BANANA SUB-ASSEMBLY
2	2	853-314	ROLLER w/ BEARING
3	2	810-954	1/2" x 1 1/4" SHOULDER BOLT
4	4	818-008	1/2" FLAT WASHER
5	2	817-306	3/8"-16 JAM NUT
6	1	810-953	3/8" SHOULDER BOLT - 1"
7	1	817-406	3/8" NUT



This document contains information proprietary to Magnum Fitness Systems. It is submitted in confidence and is to be used solely for the purpose for which it is furnished. This document and such information is not to be reproduced, transmitted, or used in whole or part without written authorization.

TOLERANCES: + 0.000"
- 1/16"

UNLESS OTHERWISE SPECIFIED
DIMENSIONS ARE IN INCHES.

DRAWN BY:
RAD

MAGNUM FITNESS SYSTEMS
2201 12th. Avenue
S. Milwaukee, WI, 53172

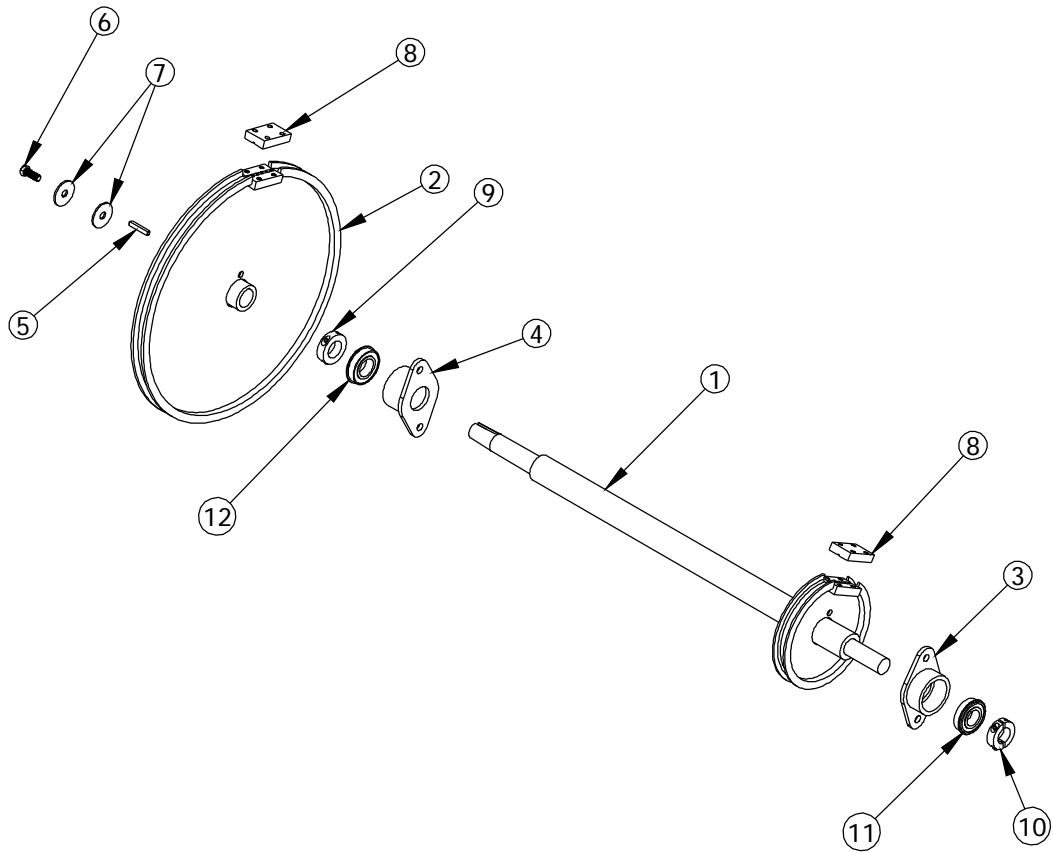
TITLE: 3000 SERIES BANANA (LEFT)

DATE: 11/05/04	PART NO. 101-278	JOB NO. XXXXXXXX	REV: 1
-------------------	---------------------	---------------------	-----------

FILE LOCATION: C:\Cad Drawings\Solid Works\

1 OF 1

ITEM NO.	QTY.	PART NO.	DESCRIPTION
1	1	100-901	CAM SHAFT ASSEMBLY
2	1	101-074	CAM ASSEMBLY
3	1	100-880	BEARING HOUSING
4	1	100-879	BEARING HOUSING
5	1	842-404	1/4" x 1/4" x 1 1/2" KEY
6	1	810-604	3/8" x 1" BOLT
7	2	818-351	7/16"ID x 1 9/16"OD WASHER
8	2	339-714	1/2" x 1 1/2" F.S. - 2 1/4"
9	1	852-718	1 1/8" SPLIT COLLAR
10	1	852-717	1" SPLIT COLLAR
11	1	851-416	FLANGE BEARING - 1"
12	1	851-420	FLANGE BEARING - 1 1/8"



This document contains information proprietary to Magnum Fitness Systems. It is submitted in confidence and is to be used solely for the purpose for which it is furnished. This document and such information is not to be reproduced, transmitted, or used in whole or part without written authorization.

TOLERANCES: + 0.000"
- 1/16"

UNLESS OTHERWISE SPECIFIED
DIMENSIONS ARE IN INCHES.

DRAWN BY:
RAD

MAGNUM FITNESS SYSTEMS
2201 12th. Avenue
S. Milwaukee, WI, 53172

TITLE: CAM ASSEMBLY
2222, 3022

DATE: 06/24/04	PART NO. 101-296	JOB NO. XXXXXXXX	REV: 1
-------------------	---------------------	---------------------	-----------

FILE LOCATION: C:\Cad Drawings\Solid Works\

1 OF 1