

This document contains information proprietary to Magnum Fitness Systems. It is submitted in confidence and is to be used solely for the purpose for which it is furnished. This document and such information is not to be reproduced, transmitted, or used in whole or part without written authorization.

**TOLERANCES:** + 0.000"  
- 1/16"

UNLESS OTHERWISE SPECIFIED  
DIMENSIONS ARE IN INCHES.

DRAWN BY:  
**R. Degenhardt**

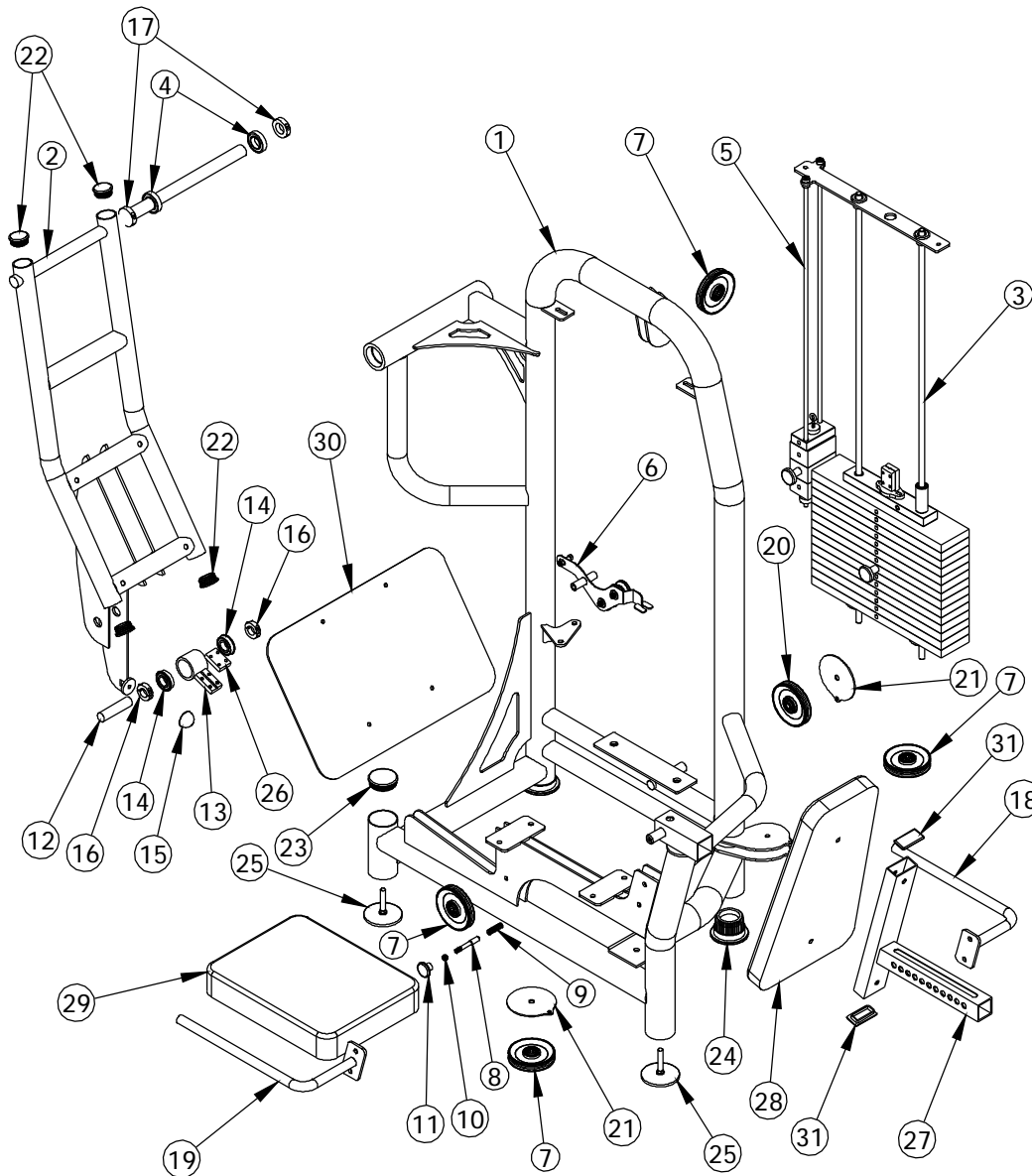
**MAGNUM FITNESS SYSTEMS**  
2201 12th. Avenue  
S. Milwaukee, WI, 53172

**TITLE: 3000 - SEATED LEG PRESS**

DATE: 11/19/04	PART NO. xxx-xxx	JOB NO. XXXXXXXX	REV: 1
-------------------	---------------------	---------------------	-----------

FILE LOCATION: C:\Cad Drawings\Solid Works\

1 OF 3



This document contains information proprietary to Magnum Fitness Systems. It is submitted in confidence and is to be used solely for the purpose for which it is furnished. This document and such information is not to be reproduced, transmitted, or used in whole or part without written authorization.

TOLERANCES: + 0.000"  
- 1/16"

UNLESS OTHERWISE SPECIFIED  
DIMENSIONS ARE IN INCHES.

DRAWN BY:  
R. Degenhardt

**MAGNUM FITNESS SYSTEMS**

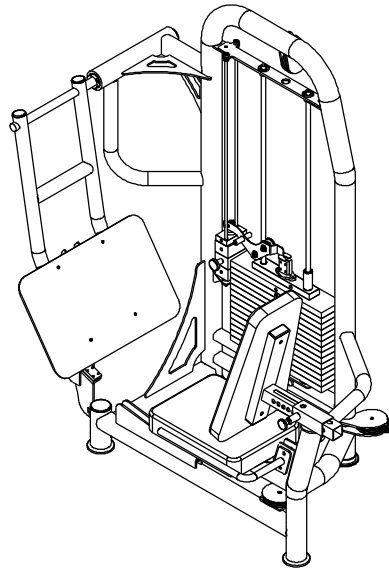
2201 12th. Avenue  
S. Milwaukee, WI, 53172

TITLE: 3000 - SEATED LEG PRESS

DATE: 11/19/04	PART NO. xxx-xxx	JOB NO. XXXXXXXX	REV: 1
-------------------	---------------------	---------------------	-----------

FILE LOCATION: C:\Cad Drawings\Solid Works\

2 OF 3



ITEM NO.	QTY.	PART NO.	DESCRIPTION
1	1	101-252	3000 MAIN FRAME
2	1	101-253	3000 MAIN ARM
3	1	101-287	WEIGHT STACK ASSEMBLY
4	2	833-049	SEALED BEARING - 1 1/4" ID
5	1	101-292	MINI WEIGHT STACK ASSEMBLY
6	1	101-278	3000 SERIES BANANA (LEFT)
7	4	853-303	4" CABLE PULLEY - 3/8" NARROW HOLE
8	1	855-302	SPRING PIN w/ 5/32"
9	1	852-807	SPRING
10	1	817-306	3/8"-16 JAM NUT
11	1	852-207	GOLD PULL KNOB
12	1	200-428	1" CRR - 4"
13	1	100-904	CABLE CLIP ASSEMBLY
14	2	851-416	FLANGE BEARING - 1"
15	1	838-223	HALF-ROUND RUBBER BUMPER
16	2	852-717	1" SPLIT COLLAR
17	2	852-720	1 1/4" SPLIT COLLAR
18	1	101-293	HANDLE
19	1	101-294	HANDLE
20	1	853-300	4" CABLE PULLEY - 1/2" NARROW HOLE
21	2	501-125	1/8" PLASMA
22	4	850-035	2" ROUND END CAP
23	1	850-045	3" ROUND END CAP
24	2	850-056	3" FOOT
25	2	833-129	4" FOOT (LONG)
26	1	339-714	1/2" x 1 1/2" F.S. - 2 1/4"
27	1	101-295	3000 SEAT BACK ADJUSTMENT
28	1	901-044	UPHOLSTERY
29	1	901-045	UPHOLSTERY
30	1	501-459	D-PLATE - 16" x 25"
31	2	850-011	1 1/2" x 3" END CAP

This document contains information proprietary to Magnum Fitness Systems. It is submitted in confidence and is to be used solely for the purpose for which it is furnished. This document and such information is not to be reproduced, transmitted, or used in whole or part without written authorization.

TOLERANCES: + 0.000"  
- 1/16"

UNLESS OTHERWISE SPECIFIED  
DIMENSIONS ARE IN INCHES.

DRAWN BY:  
R. Degenhardt

DATE:  
11/19/04

PART NO.  
xxx-xxx

JOB NO.  
XXXXXXXX

REV:  
1

**MAGNUM FITNESS SYSTEMS**

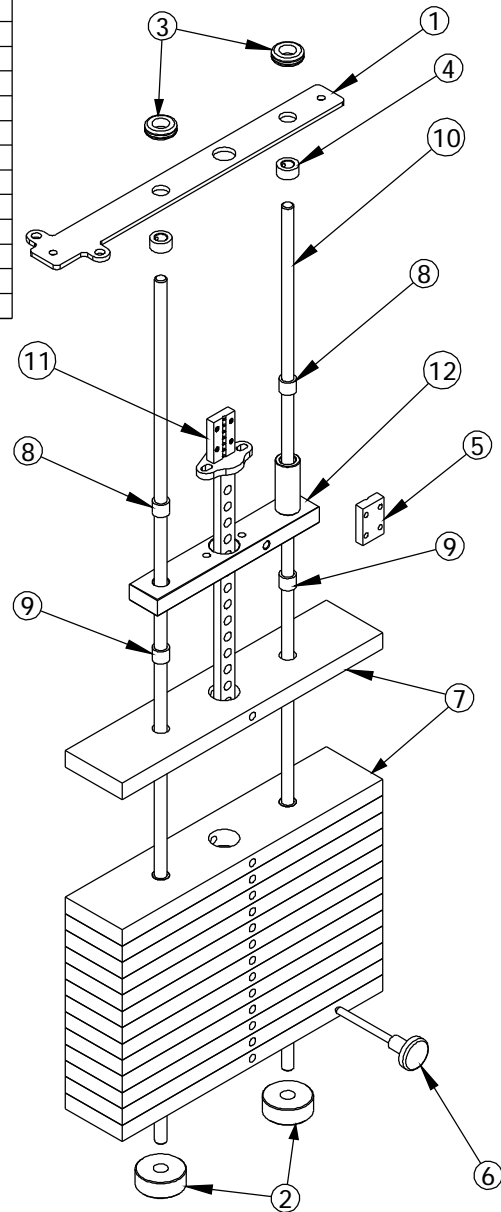
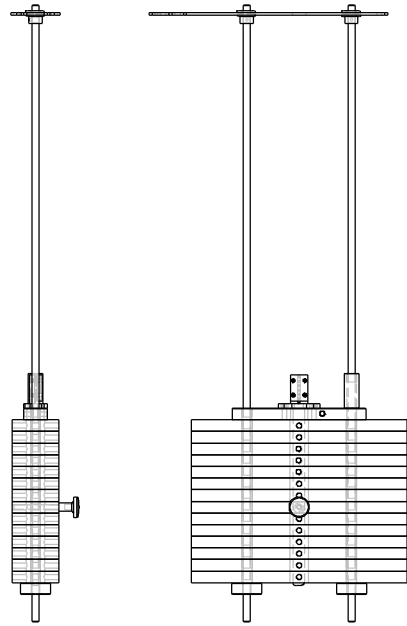
2201 12th. Avenue  
S. Milwaukee, WI, 53172

TITLE: 3000 SEATED LEG PRESS

FILE LOCATION: C:\Cad Drawings\Solid Works\

3 OF 3

ITEM NO.	QTY.	PART NO.	DESCRIPTION
1	1	500-963	1/4" PLASMA
2	2	838-211	ROUND WEIGHT STACK BUMPER
3	2	858-005	5/8" RUBBER GROMMET
4	2	852-610	5/8" SET COLLAR
5	1	339-714	1/2" x 1 1/2" F.S. - 2 1/4"
6	1	852-007	SELECTOR PIN w/ 6 1/2" CORD
7	14	300-410	1" x 4" F.S. - 18 1/2"
8	2	849-001	7/8"OD x 5/8"ID x 3/4" BUSHING
9	28	849-002	7/8"OD x .640"ID x 3/4" BUSHING
10	2	200-399	5/8" GUIDE ROD - 53"
11	1	101-127	CENTER STICK - 14
12	1	101-129	TOP WEIGHT PLATE



This document contains information proprietary to Magnum Fitness Systems. It is submitted in confidence and is to be used solely for the purpose for which it is furnished. This document and such information is not to be reproduced, transmitted, or used in whole or part without written authorization.

**TOLERANCES:** + 0.000"  
- 1/16"

UNLESS OTHERWISE SPECIFIED  
DIMENSIONS ARE IN INCHES.

**MAGNUM FITNESS SYSTEMS**  
2201 12th. Avenue  
S. Milwaukee, WI, 53172

**TITLE: WEIGHT STACK ASSEMBLY  
68" FRAME - 14 PLATE**

DRAWN BY:  
**RAD**

DATE:  
11/18/04

PART NO.  
101-287

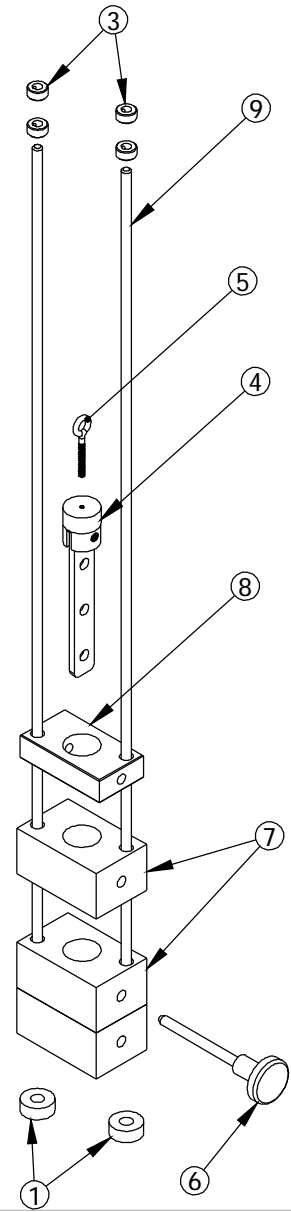
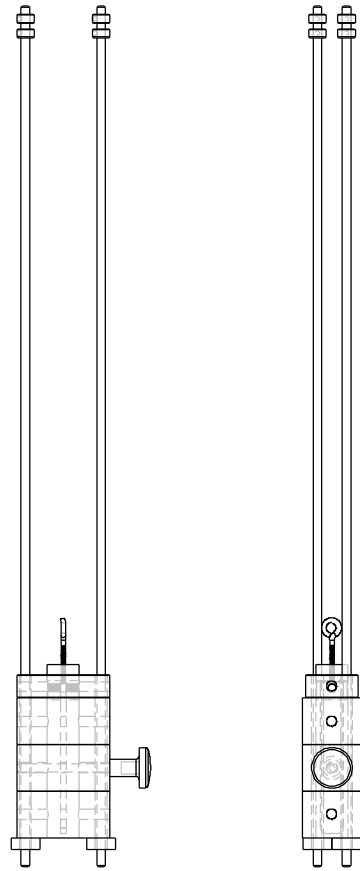
JOB NO.  
XXXXXXXXX

REV:  
1

FILE LOCATION: C:\Cad Drawings\Solid Works\

1 OF 1

ITEM NO.	QTY.	PART NO.	DESCRIPTION
1	2	858-251	1/2" RUBBER BUMPER
3	4	852-607	3/8" SHAFT COLLAR
4	1	101-053	MINI WEIGHT STACK CENTER STICK
5	1	818-899	3/8" EYE BOLT - 2 1/2"
6	1	852-008	SELECTOR PIN w/ 4" CORD
7	3	300-413	2" x 4" F.S. - 2 9/16"
8	1	807-001	1" x 2 1/4" F.S. - 4"
9	2	200-394	3/8" GUIDE ROD - 37"



This document contains information proprietary to Magnum Fitness Systems. It is submitted in confidence and is to be used solely for the purpose for which it is furnished. This document and such information is not to be reproduced, transmitted, or used in whole or part without written authorization.

TOLERANCES: + 0.000"  
- 1/16"

UNLESS OTHERWISE SPECIFIED  
DIMENSIONS ARE IN INCHES.

DRAWN BY:  
RAD

**MAGNUM FITNESS SYSTEMS**  
2201 12th. Avenue  
S. Milwaukee, WI, 53172

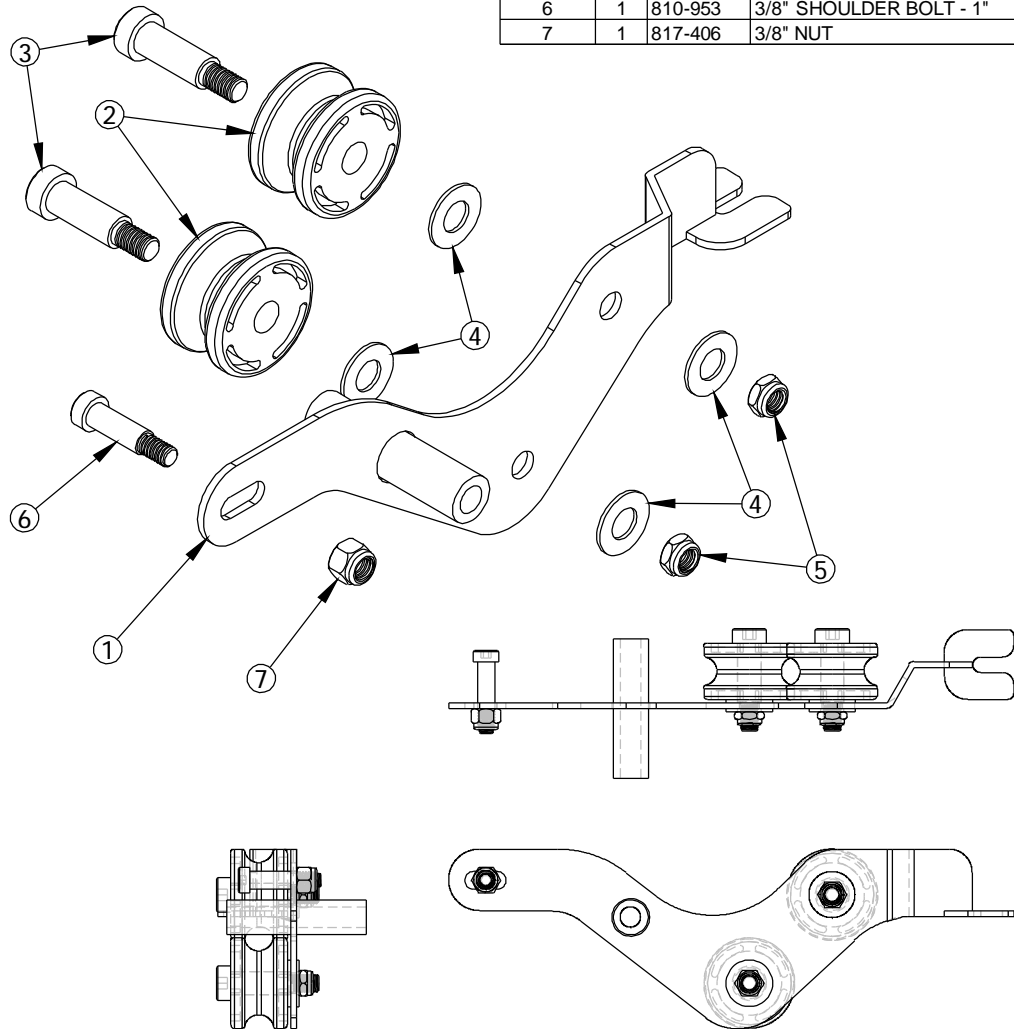
TITLE: MINI WEIGHT STACK ASSEMBLY

DATE: 11/17/04	PART NO. 101-288	JOB NO. XXXXXXXX	REV: 1
-------------------	---------------------	---------------------	-----------

FILE LOCATION: C:\Cad Drawings\Solid Works\

1 OF 1

ITEM NO.	QTY.	PART NO.	DESCRIPTION
1	1	101-276	BANANA SUB-ASSEMBLY
2	2	853-314	ROLLER w/ BEARING
3	2	810-954	1/2" x 1 1/4" SHOULDER BOLT
4	4	818-008	1/2" FLAT WASHER
5	2	817-306	3/8"-16 JAM NUT
6	1	810-953	3/8" SHOULDER BOLT - 1"
7	1	817-406	3/8" NUT



This document contains information proprietary to Magnum Fitness Systems. It is submitted in confidence and is to be used solely for the purpose for which it is furnished. This document and such information is not to be reproduced, transmitted, or used in whole or part without written authorization.

TOLERANCES: + 0.000"  
- 1/16"

UNLESS OTHERWISE SPECIFIED  
DIMENSIONS ARE IN INCHES.

DRAWN BY:  
RAD

**MAGNUM FITNESS SYSTEMS**  
2201 12th. Avenue  
S. Milwaukee, WI, 53172

TITLE: 3000 SERIES BANANA (LEFT)

DATE: 11/05/04	PART NO. 101-278	JOB NO. XXXXXXXX	REV: 1
-------------------	---------------------	---------------------	-----------

FILE LOCATION: C:\Cad Drawings\Solid Works\

1 OF 1