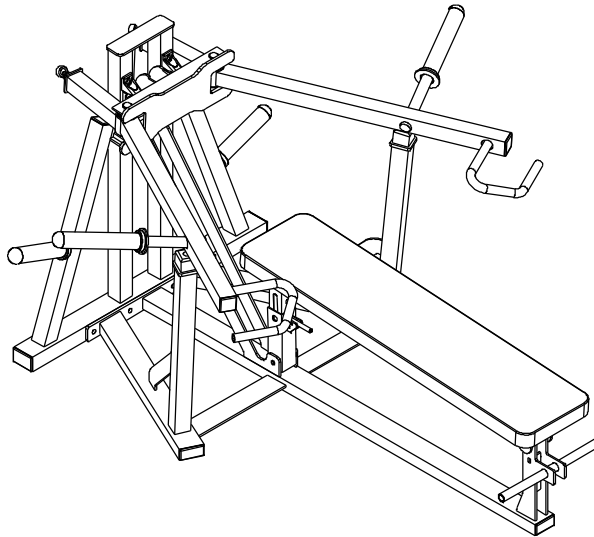


ITEM NO.	QTY.	PART NO.	DESCRIPTION
1	1	100-863	Main Frame (Rear)
2	1	101-489	Main Frame (Front)
3	1	100-733	Seat Frame
4	2	851-514	1/2" BRASS BUSHING
5	1	100-159	Telescopic Slide
6	1	100-856	H-Brace
7	2	851-317	1" PILLOW BLOCK
8	6	819-316	1" Ext. SNAP RING
9	2	200-388	1" CRR - 5"
10	1	100-959	Arm (Right)
11	1	100-960	Arm (Left)
12	4	851-416	FLANGE BEARING - 1"
13	1	339-795	Chrome Slide
14	2	250-400	3/4"OD x 7/16"ID PIPE - 6 1/2"
15	2	855-154f	Ball Joint (Female Half)
16	2	855-154m	Ball Joint (Male half)
17	2	855-156m	Ball Joint (Male Half)
18	2	855-156f	Ball Joint (Female Half)(Threaded Left Handed)
19	2	858-260	2" x 2" RUBBER BUMMPER
20	2	850-006	2" X 3" END CAP
21	5	850-011	1 1/2" x 3" END CAP
22	4	850-004	2" x 2" END CAP
23	4	850-030	Bullet End Cap
24	4	858-253	2 1/2"OD x 1 7/8"ID RUBBER BUMPER - 1/2"
25	1	900-186	Back Pad
26	1	101-411	Lever Lock Assembly



This document contains information proprietary to Magnum Fitness Systems. It is submitted in confidence and is to be used solely for the purpose for which it is furnished. This document and such information is not to be reproduced, transmitted, or used in whole or part without written authorization.

TOLERANCES: + 0.000"
- 1/16"

UNLESS OTHERWISE SPECIFIED
DIMENSIONS ARE IN INCHES.

DRAWN BY:
Josh Ellis

DATE:
08/22/07

PART NO.
xxx-xxx

JOB NO.
XXXXXXXX

REV:
1

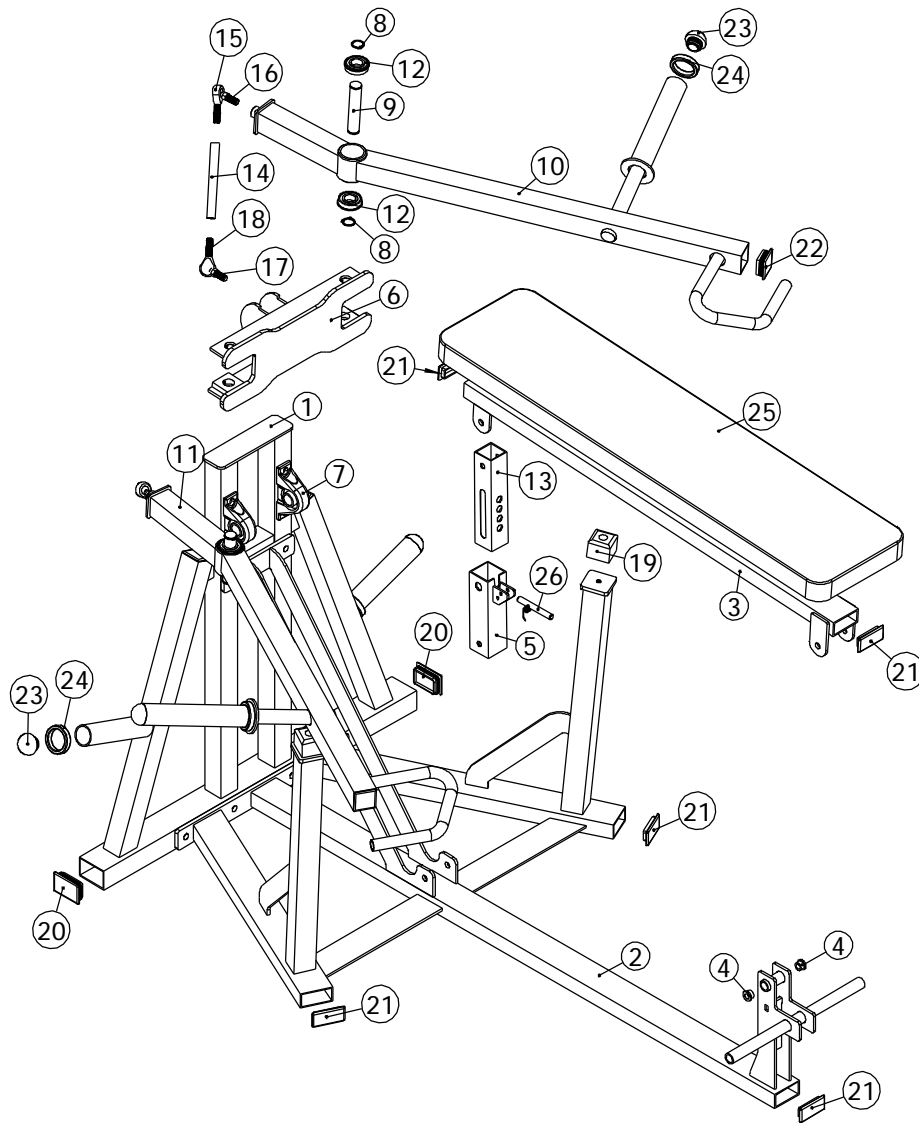
MAGNUM FITNESS SYSTEMS

2201 12th. Avenue
S. Milwaukee, WI, 53172

416 - Bench Press

FILE LOCATION: C:\Cad Drawings\Solid Works\

1 OF 2



This document contains information proprietary to Magnum Fitness Systems. It is submitted in confidence and is to be used solely for the purpose for which it is furnished. This document and such information is not to be reproduced, transmitted, or used in whole or part without written authorization.

TOLERANCES: + 0.000"
- 1/16"

MAGNUM FITNESS SYSTEMS
2201 12th. Avenue
S. Milwaukee, WI, 53172

UNLESS OTHERWISE SPECIFIED
DIMENSIONS ARE IN INCHES.

TITLE: 416 - Bench Press

DRAWN BY:
Josh Ellis

DATE:
08/22/07

PART NO.
xxx-xxx

JOB NO.
XXXXXXXX

REV:
1

FILE LOCATION: C:\Cad Drawings\Solid Works\

2 OF 2