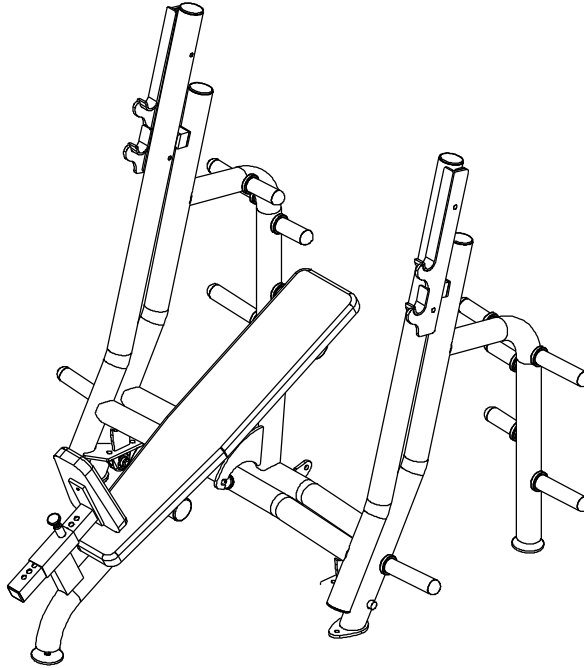
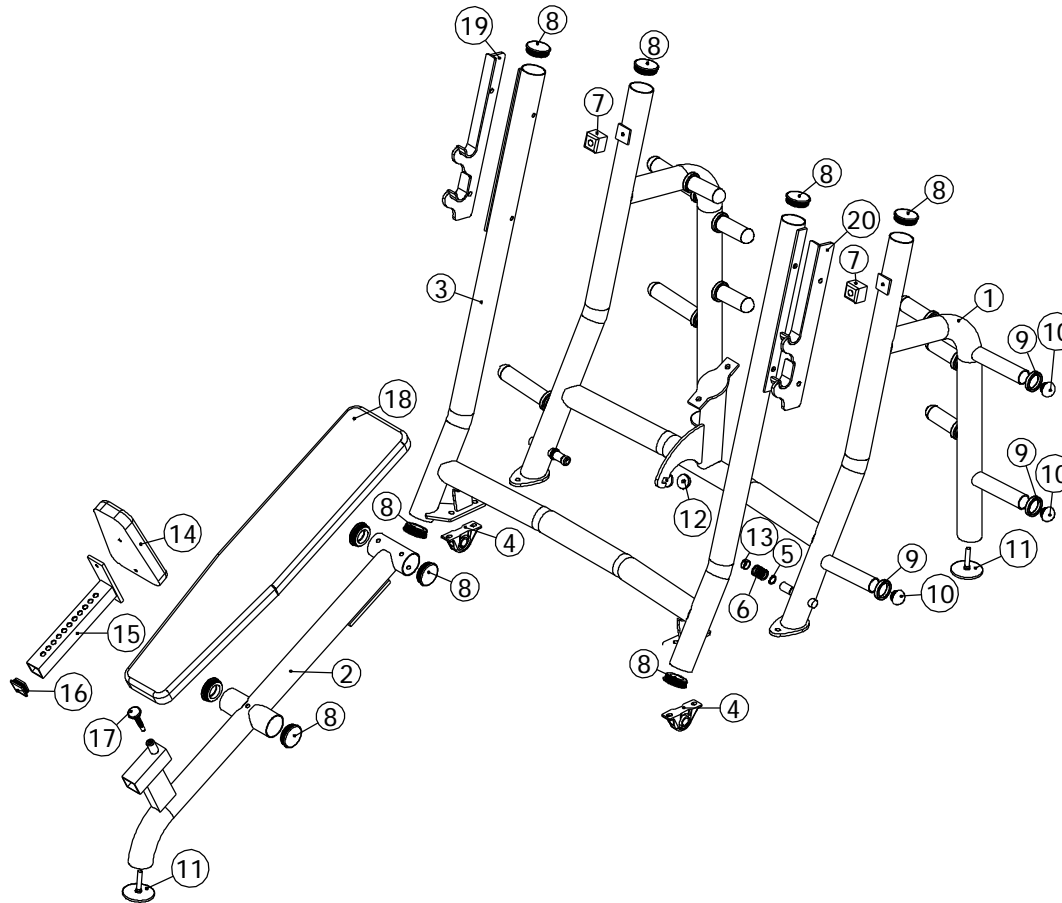


ITEM NO.	QTY.	PART NO.	DESCRIPTION
1	1	101-707	Main Frame
2	1	101-708	Seat Frame
3	1	101-709	Breaker Frame
4	2	851-317	1" PILLOW BLOCK
5	2	819-316	1" Ext. SNAP RING
6	8	819-124	1 21/64" O.D. x 1 1/64" I.D. 14GA
7	2	858-260	2" x 2" RUBBER BUMMPER
8	10	850-045	3" ROUND END CAP
9	12	858-253	2 1/2"OD x 1 7/8"ID RUBBER BUMPER - 1/2"
10	12	850-030	Bullet End Cap
11	3	833-129	4" FOOT (LONG)
12	1	838-223	HALF-ROUND RUBBER BUMPER
13	2	850-012	1" Vinyl Cap
14	1	900-022	Seat Pad
15	1	339-736	CHROME SEAT POST
16	1	850-004	2" x 2" END CAP
17	1	101-140	SPRING PIN ASSEMBLY
18	1	900-021	Back Pad
19	1	339-077	Chromed Take Off (Left)
20	1	339-078	Chromed Take Off (Right)



<p>This document contains information proprietary to Magnum Fitness Systems. It is submitted in confidence and is to be used solely for the purpose for which it is furnished. This document and such information is not to be reproduced, transmitted, or used in whole or part without written authorization.</p>	<p>TOLERANCES: + 0.000" - 1/16"</p>	<p>MAGNUM FITNESS SYSTEMS 2201 12th. Avenue S. Milwaukee, WI, 53172</p>			
	<p>UNLESS OTHERWISE SPECIFIED DIMENSIONS ARE IN INCHES.</p>	<p>TITLE: A679 - Breaker Incline Bench</p>			
<p>DRAWN BY: Josh Ellis</p>	<p>DATE: 07/12/07</p>	<p>PART NO. xxx-xxx</p>	<p>JOB NO. XXXXXXXX</p>	<p>REV: 1</p>	
<p>FILE LOCATION: C:\Cad Drawings\Solid Works\</p>					<p>1 OF 2</p>



This document contains information proprietary to Magnum Fitness Systems. It is submitted in confidence and is to be used solely for the purpose for which it is furnished. This document and such information is not to be reproduced, transmitted, or used in whole or part without written authorization.

TOLERANCES: + 0.000"
- 1/16"

UNLESS OTHERWISE SPECIFIED
DIMENSIONS ARE IN INCHES.

DRAWN BY:
Josh Ellis

MAGNUM FITNESS SYSTEMS
2201 12th. Avenue
S. Milwaukee, WI, 53172

TITLE: Breaker Incline Bench

DATE:
07/12/07

PART NO.
xxx-xxx

JOB NO.
XXXXXXXX

REV:
1

FILE LOCATION: C:\Cad Drawings\Solid Works\

2 OF 2