

This document contains information proprietary to Magnum Fitness Systems. It is submitted in confidence and is to be used solely for the purpose for which it is furnished. This document and such information is not to be reproduced, transmitted, or used in whole or part without written authorization.

TOLERANCES: + 0.000"
- 1/16"

UNLESS OTHERWISE SPECIFIED
DIMENSIONS ARE IN INCHES.

DRAWN BY:
R. Degenhardt

MAGNUM FITNESS SYSTEMS
2201 12th. Avenue
S. Milwaukee, WI, 53172

TITLE: 2043 - Adductor/Abductor

DATE:
12/30/04

PART NO.
xxx-xxx

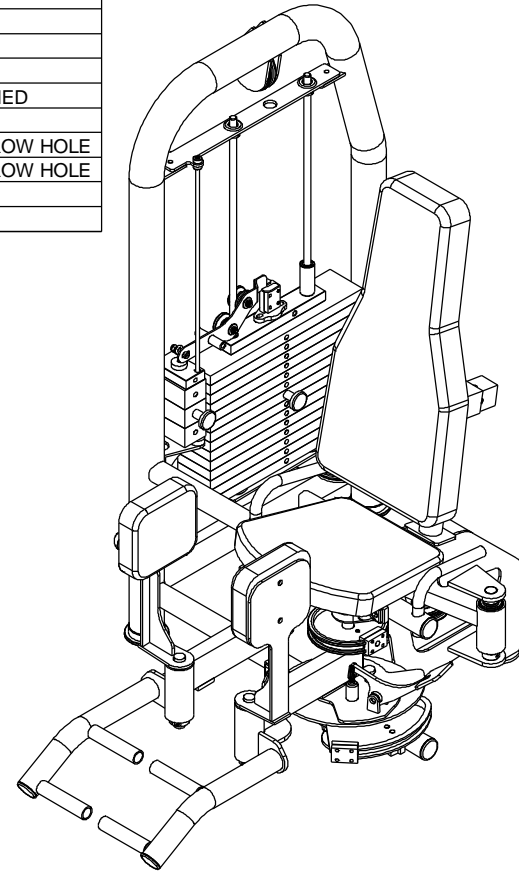
JOB NO.
XXXXXXXX

REV:
1

FILE LOCATION: C:\Cad Drawings\Solid Works\

1 OF 3

ITEM NO.	QTY.	PART NO.	DESCRIPTION
1	1	101-182	2043 MAIN FRAME
2	1	101-301	2043 ARM (RIGHT)
3	1	101-302	2043 ARM (LEFT)
4	1	101-141	WEIGHT STACK ASSEMBLY
5	1	101-143	MINI WEIGHT STACK
6	1	101-148	LEFT BANANA ASSEMBLY
7	1	101-304	2043 ARM ADJUSTMENT
8	1	200-307	1" CRR - 7 1/4"
9	2	850-035	2" ROUND END CAP
10	2	850-056	3" FOOT
11	2	833-129	4" FOOT (LONG)
12	1	901-020	UPHOLSTERY
13	1	855-302	SPRING PIN w/ 5/32"
14	1	852-807	SPRING
15	1	817-306	3/8"-16 JAM NUT
16	1	852-207	GOLD PULL KNOB
17	1	339-702	ADJUSTMENT POST - CHROMED
18	1	901-048	UPHOLSTERY
19	2	853-303	4" CABLE PULLEY - 3/8" NARROW HOLE
20	1	853-300	4" CABLE PULLEY - 1/2" NARROW HOLE
21	1	501-125	1/8" PLASMA
22	1	339-714	1/2" x 1 1/2" F.S. - 2 1/4"



This document contains information proprietary to Magnum Fitness Systems. It is submitted in confidence and is to be used solely for the purpose for which it is furnished. This document and such information is not to be reproduced, transmitted, or used in whole or part without written authorization.

TOLERANCES: + 0.000"
- 1/16"

UNLESS OTHERWISE SPECIFIED
DIMENSIONS ARE IN INCHES.

DRAWN BY:
R. Degenhardt

MAGNUM FITNESS SYSTEMS

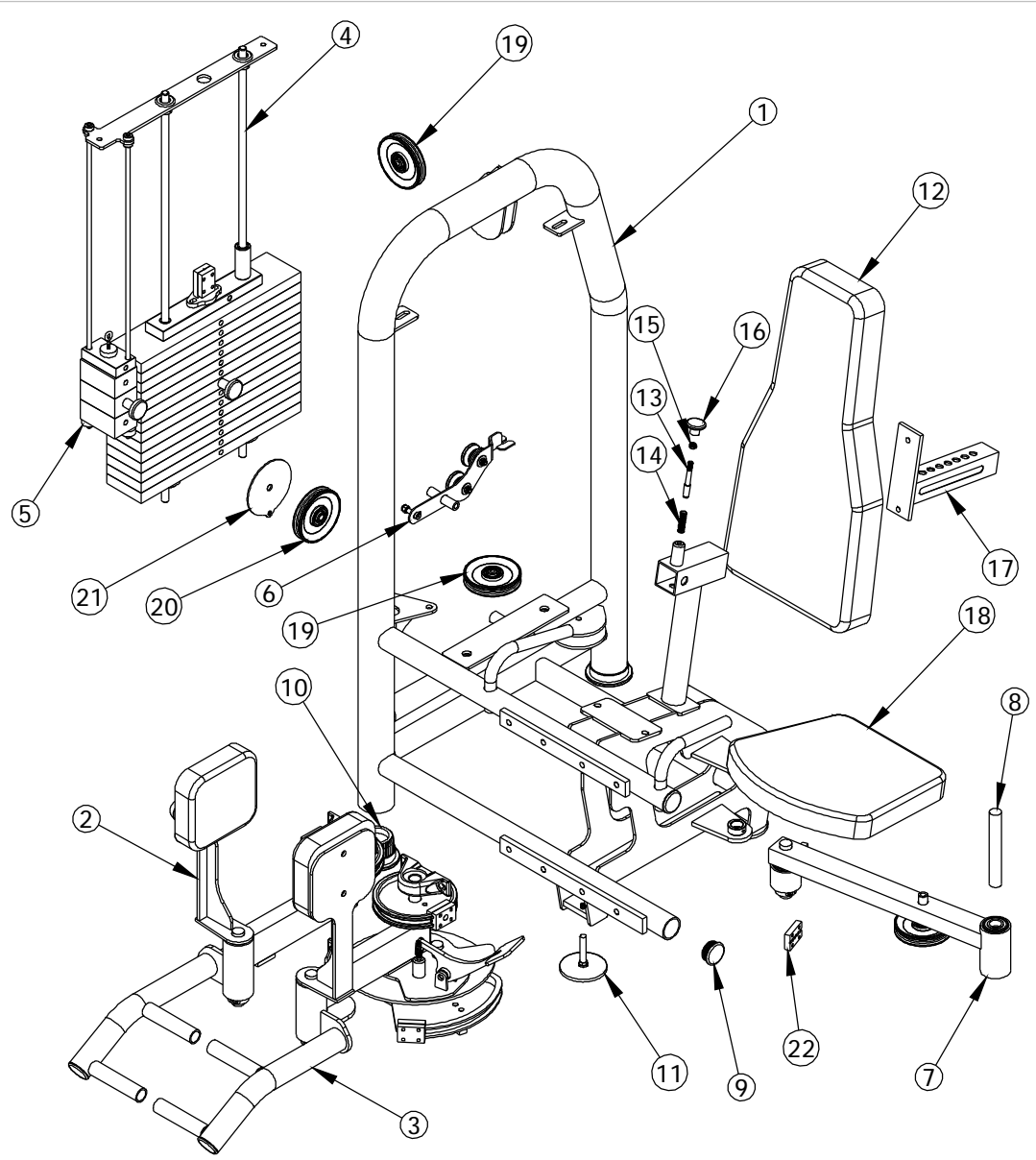
2201 12th. Avenue
S. Milwaukee, WI, 53172

TITLE: 2043 - Adductor/Abductor

DATE: 12/30/04	PART NO. xxx-xxx	JOB NO. XXXXXXXX	REV: 1
-------------------	---------------------	---------------------	-----------

FILE LOCATION: C:\Cad Drawings\Solid Works\

3 OF 3



This document contains information proprietary to Magnum Fitness Systems. It is submitted in confidence and is to be used solely for the purpose for which it is furnished. This document and such information is not to be reproduced, transmitted, or used in whole or part without written authorization.

TOLERANCES: + 0.000"
- 1/16"

UNLESS OTHERWISE SPECIFIED
DIMENSIONS ARE IN INCHES.

MAGNUM FITNESS SYSTEMS
2201 12th. Avenue
S. Milwaukee, WI, 53172

TITLE: 2043 - Adductor/Abductor

DRAWN BY:
R. Degenhardt

DATE:
12/30/04

PART NO.
xxx-xxx

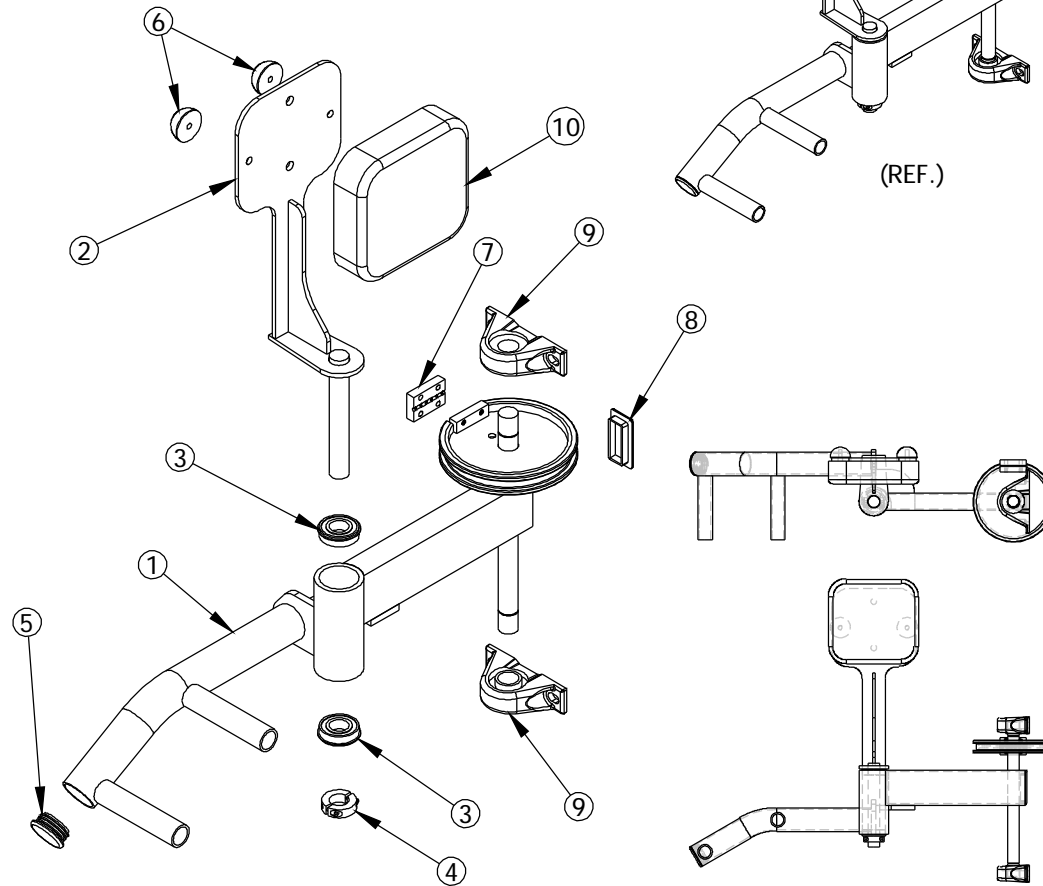
JOB NO.
XXXXXXXX

REV:
1

FILE LOCATION: C:\Cad Drawings\Solid Works\

2 OF 3

ITEM NO.	QTY.	PART NO.	DESCRIPTION
1	1	101-185	2043 SUB-ASSEMBLY
2	1	101-188	2043 SUB-ASSEMBLY
3	2	851-416	FLANGE BEARING - 1"
4	1	852-717	1" SPLIT COLLAR
5	1	850-035	2" ROUND END CAP
6	2	638-223	HALF-ROUND RUBBER BUMPER
7	1	339-714	1/2" x 1 1/2" F.S. - 2 1/4"
8	1	850-011	1 1/2" x 3" END CAP
9	2	851-317	1" PILLOW BLOCK
10	1	901-047	UPHOLSTERY



This document contains information proprietary to Magnum Fitness Systems. It is submitted in confidence and is to be used solely for the purpose for which it is furnished. This document and such information is not to be reproduced, transmitted, or used in whole or part without written authorization.

TOLERANCES: + 0.000"
- 1/16"

UNLESS OTHERWISE SPECIFIED
DIMENSIONS ARE IN INCHES.

DRAWN BY:
R. Degenhardt

MAGNUM FITNESS SYSTEMS

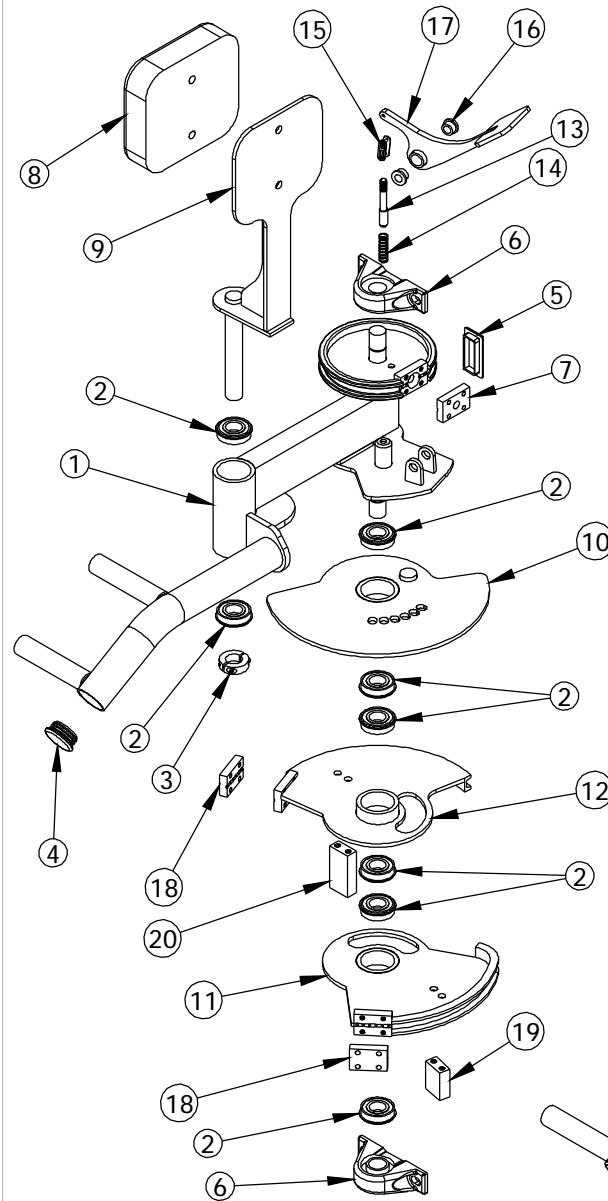
2201 12th. Avenue
S. Milwaukee, WI, 53172

TITLE: 2043 - ARM (RIGHT)

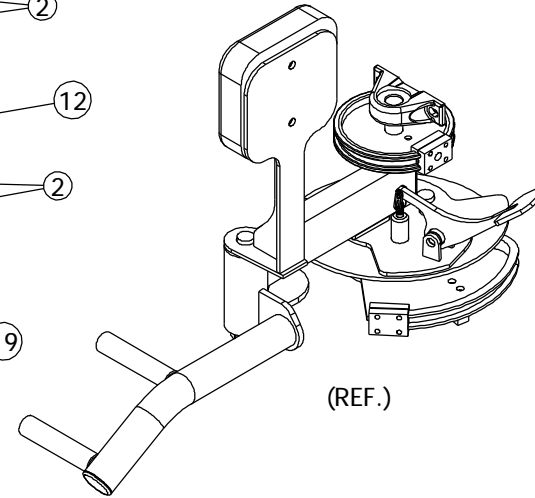
DATE: 11/30/04	PART NO. 101-301	JOB NO. XXXXXXXX	REV: 1
-------------------	---------------------	---------------------	-----------

FILE LOCATION: C:\Cad Drawings\Solid Works\

1 OF 1



ITEM NO.	QTY.	PART NO.	DESCRIPTION
1	1	101-186	2043 SUB-ASSEMBLY
2	8	851-416	FLANGE BEARING - 1"
3	1	852-717	1" SPLIT COLLAR
4	1	850-035	2" ROUND END CAP
5	1	850-011	1 1/2" x 3" END CAP
6	2	851-317	1" PILLOW BLOCK
7	1	339-037	1/2" x 1 1/2" F.S. - 2 1/4"
8	1	901-047	UPHOLSTERY
9	1	101-187	2043 SUB-ASSEMBLY
10	1	101-191	2043 - ADJUSTER
11	1	101-190	2043 - CAM ASSEMBLY
12	1	101-189	2043 - CAM ASSEMBLY
13	1	855-302	SPRING PIN w/ 5/32"
14	1	852-807	SPRING
15	1	700-534	MASTER LINK
16	2	851-514	1/2" BRASS BUSHING
17	1	101-192	ADJUSTMENT HANDLE
18	2	339-714	1/2" x 1 1/2" F.S. - 2 1/4"
19	1	339-039	3/4" x 1 1/2" F.S. - 2"
20	1	339-040	3/4" x 1 1/2" F.S. - 3"



(REF.)

This document contains information proprietary to Magnum Fitness Systems. It is submitted in confidence and is to be used solely for the purpose for which it is furnished. This document and such information is not to be reproduced, transmitted, or used in whole or part without written authorization.

TOLERANCES: + 0.000"
- 1/16"

UNLESS OTHERWISE SPECIFIED
DIMENSIONS ARE IN INCHES.

DRAWN BY:
R. Degenhardt

MAGNUM FITNESS SYSTEMS

2201 12th. Avenue
S. Milwaukee, WI, 53172

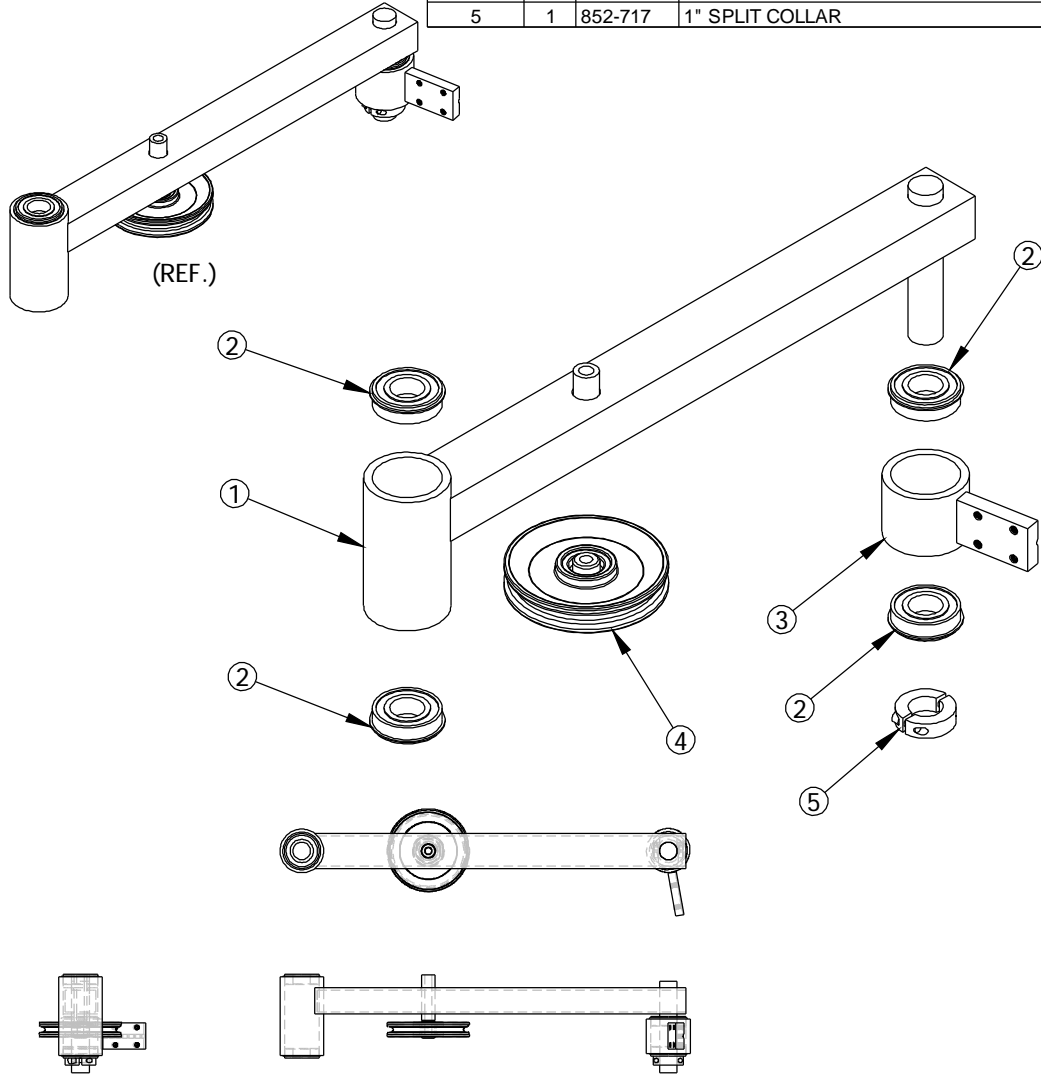
TITLE: 2043 ARM (LEFT)

DATE: 12/01/04	PART NO. 101-302	JOB NO. XXXXXXXXX	REV: 1
-------------------	---------------------	----------------------	-----------

FILE LOCATION: C:\Cad Drawings\Solid Works\

1 OF 1

ITEM NO.	QTY.	PART NO.	DESCRIPTION
1	1	101-193	2043 SUB-ASSEMBLY
2	4	651-416	FLANGE BEARING - 1"
3	1	100-904	CABLE CLIP ASSEMBLY
4	1	653-303	4" CABLE PULLEY - 3/8" NARROW HOLE
5	1	852-717	1" SPLIT COLLAR



This document contains information proprietary to Magnum Fitness Systems. It is submitted in confidence and is to be used solely for the purpose for which it is furnished. This document and such information is not to be reproduced, transmitted, or used in whole or part without written authorization.

TOLERANCES: + 0.000"
- 1/16"

UNLESS OTHERWISE SPECIFIED
DIMENSIONS ARE IN INCHES.

MAGNUM FITNESS SYSTEMS
2201 12th. Avenue
S. Milwaukee, WI, 53172

TITLE: 2043 - PIVOT ARM ASSEMBLY

DRAWN BY:
R. Degenhardt

DATE:
12/06/04

PART NO.
101-304

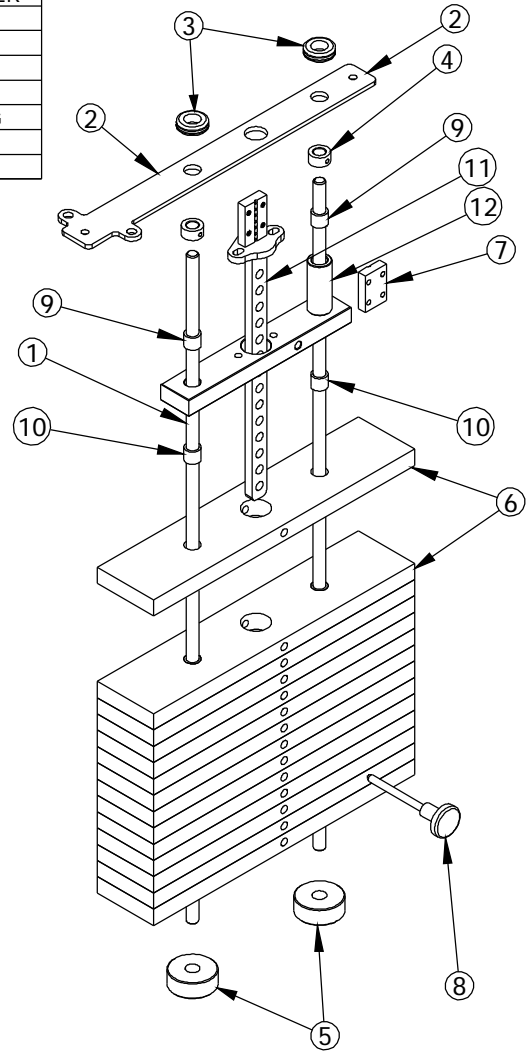
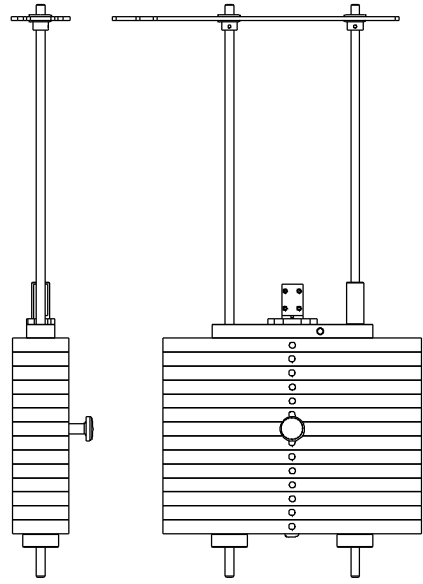
JOB NO.
XXXXXXXX

REV:
1

FILE LOCATION: C:\Cad Drawings\Solid Works\

1 OF 1

ITEM NO.	QTY.	PART NO.	DESCRIPTION
1	2	200-384	5/8" GUIDE ROD - 41"
2	1	500-963	1/4" PLASMA
3	2	858-005	5/8" RUBBER GROMMET
4	2	852-610	5/8" SET COLLAR
5	2	838-211	ROUND WEIGHT STACK BUMPER
6	14	300-410	1" x 4" F.S. - 18 1/2"
7	1	339-714	1/2" x 1 1/2" F.S. - 2 1/4"
8	1	852-007	SELECTOR PIN w/ 6 1/2" CORD
9	2	849-001	7/8"OD x 5/8"ID x 3/4" BUSHING
10	28	849-002	7/8"OD x .640"ID x 3/4" BUSHING
11	1	101-127	CENTER STICK - 14
12	1	101-129	TOP WEIGHT PLATE



This document contains information proprietary to Magnum Fitness Systems. It is submitted in confidence and is to be used solely for the purpose for which it is furnished. This document and such information is not to be reproduced, transmitted, or used in whole or part without written authorization.

TOLERANCES: + 0.000"
- 1/16"

UNLESS OTHERWISE SPECIFIED
DIMENSIONS ARE IN INCHES.

DRAWN BY:
RAD

MAGNUM FITNESS SYSTEMS
2201 12th. Avenue
S. Milwaukee, WI, 53172

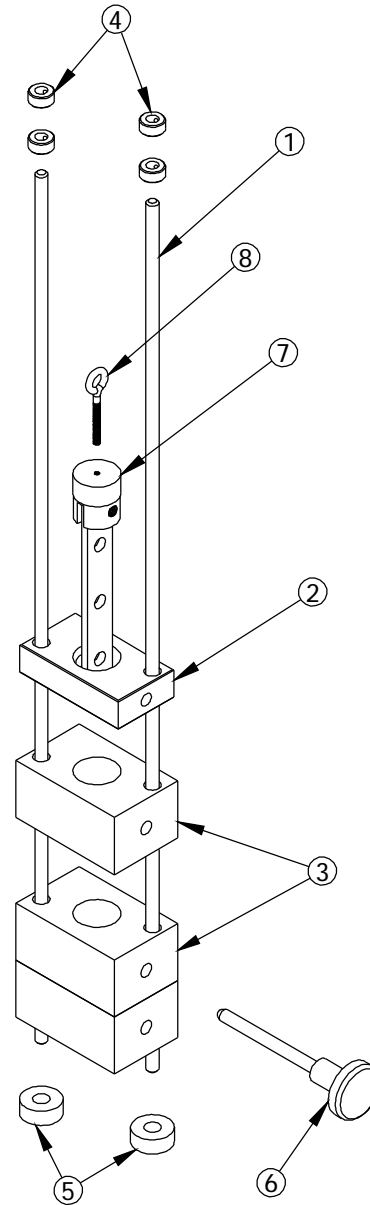
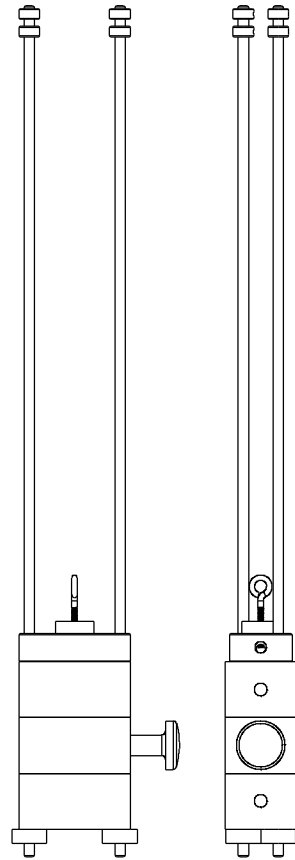
TITLE: "E" SERIES WEIGHT STACK
56" FRAME - 14 PLATE

DATE: 08/02/04	PART NO. 101-141	JOB NO. XXXXXXXXX	REV: 1
-------------------	---------------------	----------------------	-----------

FILE LOCATION: C:\Cad Drawings\Solid Works\

1 OF 1

ITEM NO.	QTY.	PART NO.	DESCRIPTION
1	2	200-402	3/8" GUIDE ROD - 30 1/2"
2	1	807-001	1" x 2 1/4" F.S. - 4"
3	3	300-413	2" x 4" F.S. - 2 9/16"
4	4	852-607	3/8" SHAFT COLLAR
5	2	858-251	1/2" RUBBER BUMPER
6	1	852-008	SELECTOR PIN w/ 4" CORD
7	1	101-053	MINI WEIGHT STACK CENTER STICK
8	1	818-899	3/8" EYE BOLT - 2 1/2"



This document contains information proprietary to Magnum Fitness Systems. It is submitted in confidence and is to be used solely for the purpose for which it is furnished. This document and such information is not to be reproduced, transmitted, or used in whole or part without written authorization.

TOLERANCES: + 0.000"
- 1/16"

UNLESS OTHERWISE SPECIFIED
DIMENSIONS ARE IN INCHES.

DRAWN BY:
RAD

MAGNUM FITNESS SYSTEMS

2201 12th. Avenue
S. Milwaukee, WI, 53172

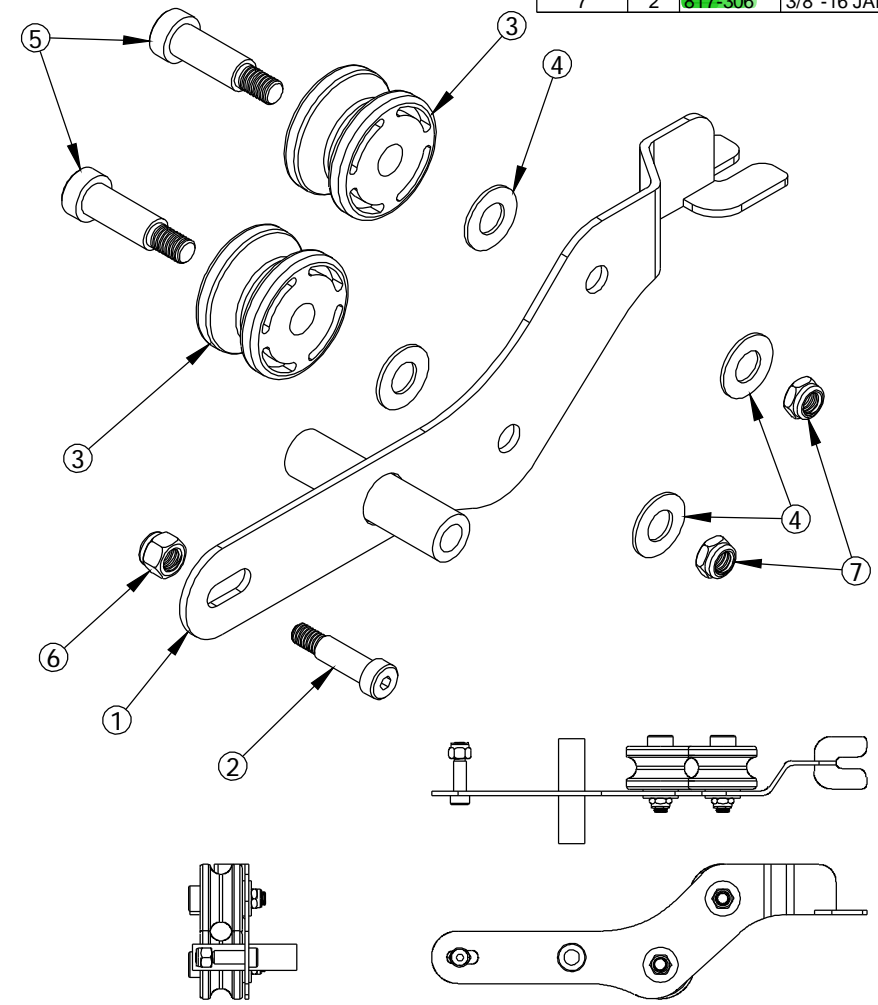
TITLE: "E" SERIES MINI STACK

DATE: 08/02/04	PART NO. 101-143	JOB NO. XXXXXXXX	REV: 1
-------------------	---------------------	---------------------	-----------

FILE LOCATION: C:\Cad Drawings\Solid Works\

1 OF 1

ITEM NO.	QTY.	PART NO.	DESCRIPTION
1	1	101-083	LEFT BANANA
2	1	810-953	3/8" SHOULDER BOLT - 1"
3	2	853-314	ROLLER w/ BEARING
4	4	818-008	1/2" FLAT WASHER
5	2	810-954	1/2" x 1 1/4" SHOULDER BOLT
6	1	817-406	3/8" NUT
7	2	817-306	3/8"-16 JAM NUT



This document contains information proprietary to Magnum Fitness Systems. It is submitted in confidence and is to be used solely for the purpose for which it is furnished. This document and such information is not to be reproduced, transmitted, or used in whole or part without written authorization.

TOLERANCES: + 0.000"
- 1/16"

UNLESS OTHERWISE SPECIFIED
DIMENSIONS ARE IN INCHES.

DRAWN BY:
RAD

MAGNUM FITNESS SYSTEMS
2201 12th. Avenue
S. Milwaukee, WI, 53172

TITLE: BANANA ASSEMBLY (LEFT)

DATE: 08/02/04	PART NO. 101-148	JOB NO. XXXXXXXX	REV: 1
-------------------	---------------------	---------------------	-----------

FILE LOCATION: C:\Cad Drawings\Solid Works\

1 OF 1