

This document contains information proprietary to Magnum Fitness Systems. It is submitted in confidence and is to be used solely for the purpose for which it is furnished. This document and such information is not to be reproduced, transmitted, or used in whole or part without written authorization.

TOLERANCES: + 0.000"
- 1/16"

UNLESS OTHERWISE SPECIFIED
DIMENSIONS ARE IN INCHES.

DRAWN BY:
R. Degenhardt

MAGNUM FITNESS SYSTEMS

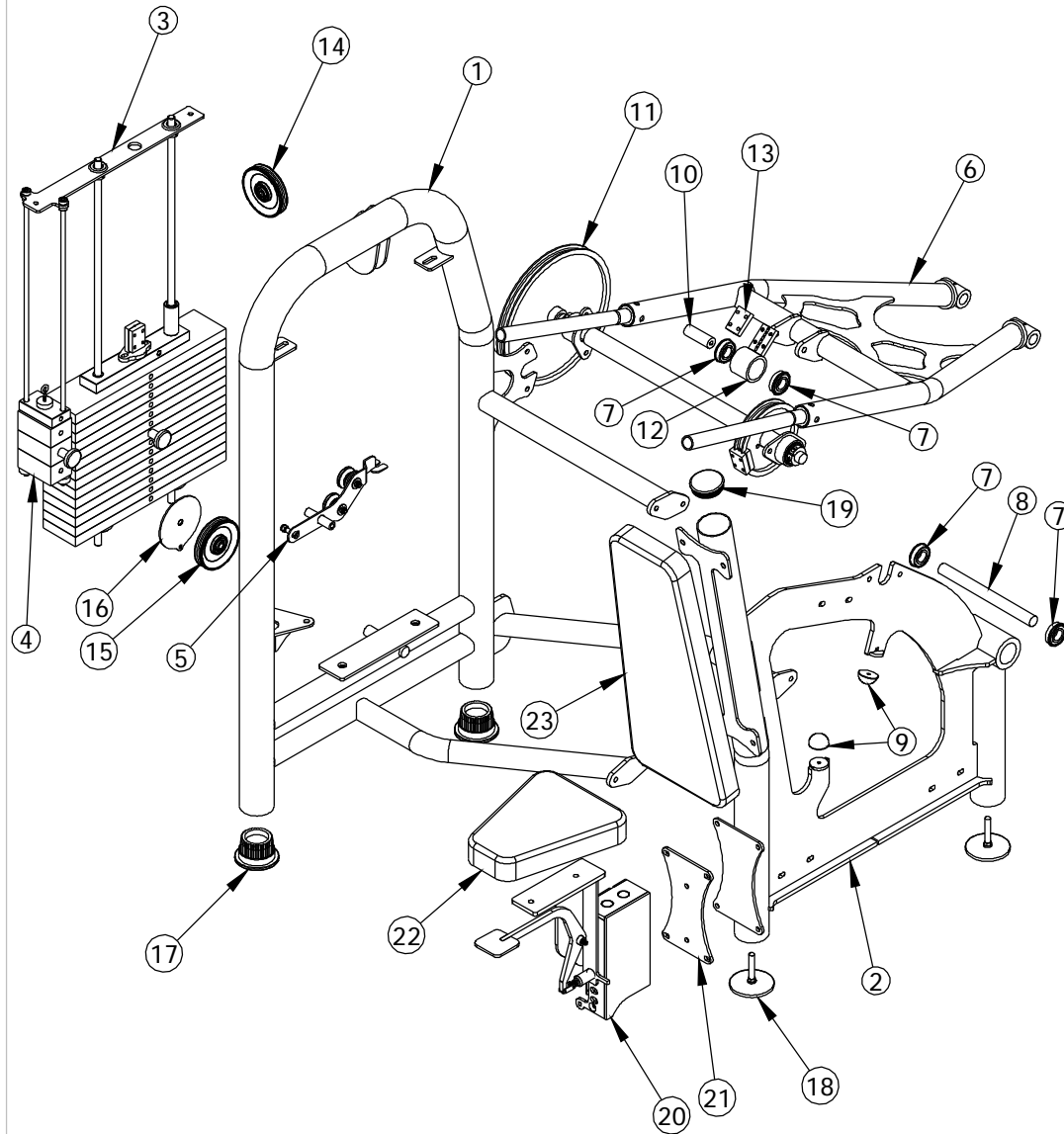
2201 12th. Avenue
S. Milwaukee, WI, 53172

TITLE: 2013 - Tricep Pushdown

| | | | |
|-------------------|---------------------|---------------------|-----------|
| DATE: 01/17/05 | PART NO. xxx-xxx | JOB NO. XXXXXXXX | REV: 1 |
|-------------------|---------------------|---------------------|-----------|

FILE LOCATION: C:\Cad Drawings\Solid Works\

1 OF 1



This document contains information proprietary to Magnum Fitness Systems. It is submitted in confidence and is to be used solely for the purpose for which it is furnished. This document and such information is not to be reproduced, transmitted, or used in whole or part without written authorization.

TOLERANCES: + 0.000"
- 1/16"

MAGNUM FITNESS SYSTEMS

2201 12th. Avenue
S. Milwaukee, WI, 53172

UNLESS OTHERWISE SPECIFIED
DIMENSIONS ARE IN INCHES.

TITLE: 2013 - Tricep Pushdown

DRAWN BY:
R. Degenhardt

DATE:
01/17/05

PART NO.
xxx-xxx

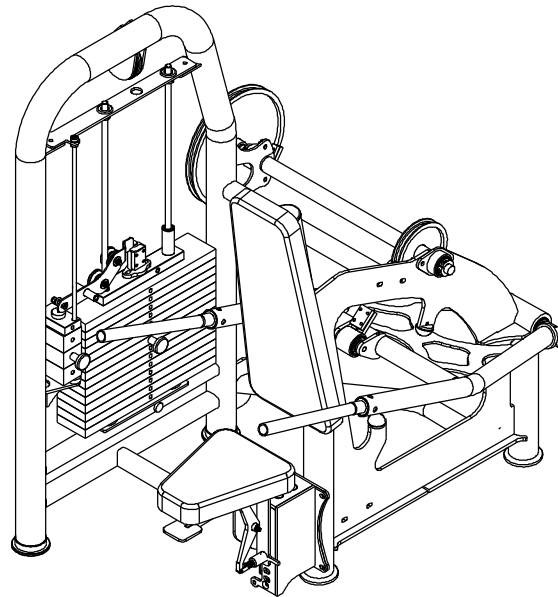
JOB NO.
XXXXXXXX

REV:
1

FILE LOCATION: C:\Cad Drawings\Solid Works\

1 OF 1

| ITEM NO. | QTY. | PART NO. | DESCRIPTION |
|----------|------|----------|------------------------------------|
| 1 | 1 | 101-061 | 2013 MAIN FRAME SUB-ASSEMBLY |
| 2 | 1 | 101-048 | 2013 MAIN FRAME SUB-ASSEMBLY |
| 3 | 1 | 101-141 | WEIGHT STACK ASSEMBLY |
| 4 | 1 | 101-143 | MINI WEIGHT STACK |
| 5 | 1 | 101-148 | LEFT BANANA ASSEMBLY |
| 6 | 1 | 101-059 | 2013 MAIN ARM |
| 7 | 4 | 851-416 | FLANGE BEARING - 1" |
| 8 | 1 | 200-449 | 1" CRR - 11 1/4" |
| 9 | 2 | 838-223 | HALF-ROUND RUBBER BUMPER |
| 10 | 1 | 200-404 | 1" CRR - 2 7/8" |
| 11 | 1 | 101-365 | 2013 CAM ASSEMBLY |
| 12 | 1 | 100-904 | CABLE CLIP ASSEMBLY |
| 13 | 1 | 339-714 | 1/2" x 1 1/2" F.S. - 2 1/4" |
| 14 | 1 | 853-303 | 4" CABLE PULLEY - 3/8" NARROW HOLE |
| 15 | 1 | 853-300 | 4" CABLE PULLEY - 1/2" NARROW HOLE |
| 16 | 1 | 501-125 | 1/8" PLASMA |
| 17 | 2 | 850-056 | 3" FOOT |
| 18 | 2 | 833-129 | 4" FOOT (LONG) |
| 19 | 1 | 850-045 | 3" ROUND END CAP |
| 20 | 1 | 101-116 | SEAT BOX |
| 21 | 1 | 501-012 | 1/4" PLASMA |
| 22 | 1 | 900-194 | UPHOLSTERY |
| 23 | 1 | 901-030 | UPHOLSTERY |



This document contains information proprietary to Magnum Fitness Systems. It is submitted in confidence and is to be used solely for the purpose for which it is furnished. This document and such information is not to be reproduced, transmitted, or used in whole or part without written authorization.

TOLERANCES: + 0.000"
- 1/16"

UNLESS OTHERWISE SPECIFIED
DIMENSIONS ARE IN INCHES.

DRAWN BY:
R. Degenhardt

MAGNUM FITNESS SYSTEMS

2201 12th. Avenue
S. Milwaukee, WI, 53172

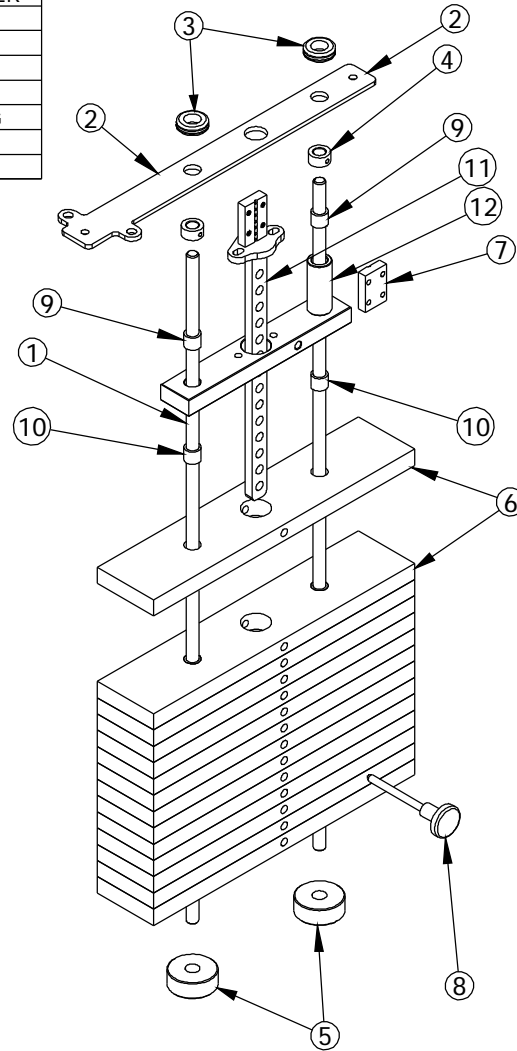
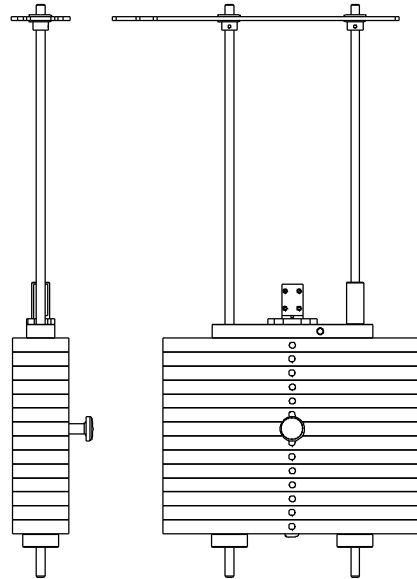
TITLE: 2013 - Tricep Pushdown

| | | | |
|-------------------|---------------------|---------------------|-----------|
| DATE: 01/17/05 | PART NO. xxx-xxx | JOB NO. XXXXXXXX | REV: 1 |
|-------------------|---------------------|---------------------|-----------|

FILE LOCATION: C:\Cad Drawings\Solid Works\

1 OF 1

| ITEM NO. | QTY. | PART NO. | DESCRIPTION |
|----------|------|----------|---------------------------------|
| 1 | 2 | 200-384 | 5/8" GUIDE ROD - 41" |
| 2 | 1 | 500-963 | 1/4" PLASMA |
| 3 | 2 | 858-005 | 5/8" RUBBER GROMMET |
| 4 | 2 | 852-610 | 5/8" SET COLLAR |
| 5 | 2 | 838-211 | ROUND WEIGHT STACK BUMPER |
| 6 | 14 | 300-410 | 1" x 4" F.S. - 18 1/2" |
| 7 | 1 | 339-714 | 1/2" x 1 1/2" F.S. - 2 1/4" |
| 8 | 1 | 852-007 | SELECTOR PIN w/ 6 1/2" CORD |
| 9 | 2 | 849-001 | 7/8"OD x 5/8"ID x 3/4" BUSHING |
| 10 | 28 | 849-002 | 7/8"OD x .640"ID x 3/4" BUSHING |
| 11 | 1 | 101-127 | CENTER STICK - 14 |
| 12 | 1 | 101-129 | TOP WEIGHT PLATE |



This document contains information proprietary to Magnum Fitness Systems. It is submitted in confidence and is to be used solely for the purpose for which it is furnished. This document and such information is not to be reproduced, transmitted, or used in whole or part without written authorization.

TOLERANCES: + 0.000"
- 1/16"

UNLESS OTHERWISE SPECIFIED
DIMENSIONS ARE IN INCHES.

DRAWN BY:
RAD

MAGNUM FITNESS SYSTEMS
2201 12th. Avenue
S. Milwaukee, WI, 53172

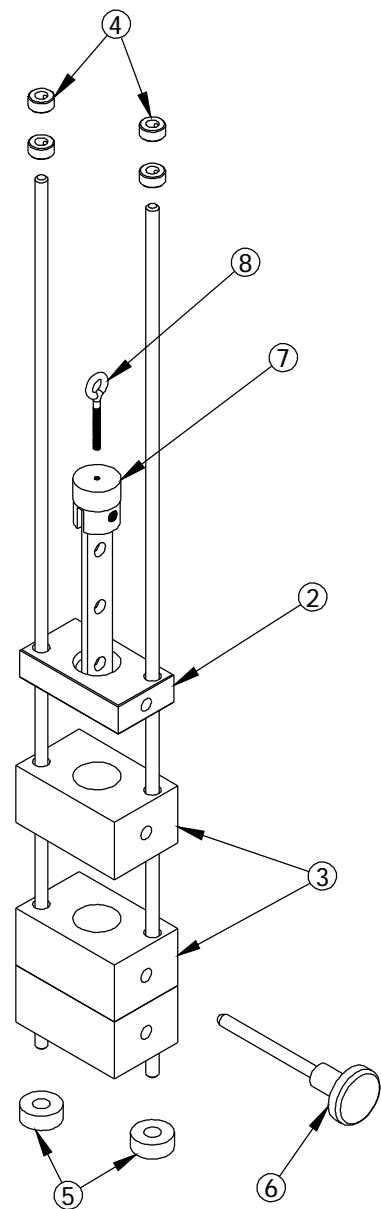
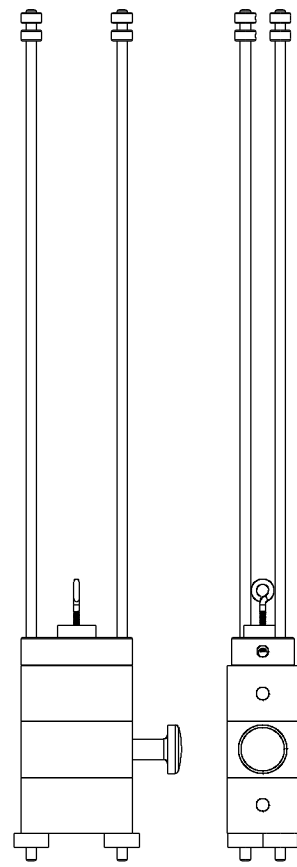
TITLE: "E" SERIES WEIGHT STACK
56" FRAME - 14 PLATE

| | | | |
|-------------------|---------------------|---------------------|-----------|
| DATE: 08/02/04 | PART NO. 101-141 | JOB NO. XXXXXXXX | REV: 1 |
|-------------------|---------------------|---------------------|-----------|

FILE LOCATION: C:\Cad Drawings\Solid Works\

1 OF 1

| ITEM NO. | QTY. | PART NO. | DESCRIPTION |
|----------|------|----------|--------------------------------|
| 2 | 1 | 807-001 | 1" x 2 1/4" F.S. - 4" |
| 3 | 3 | 300-413 | 2" x 4" F.S. - 2 9/16" |
| 4 | 4 | 852-607 | 3/8" SHAFT COLLAR |
| 5 | 2 | 858-251 | 1/2" RUBBER BUMPER |
| 6 | 1 | 852-008 | SELECTOR PIN w/ 4" CORD |
| 7 | 1 | 101-053 | MINI WEIGHT STACK CENTER STICK |
| 8 | 1 | 818-899 | 3/8" EYE BOLT - 2 1/2" |



This document contains information proprietary to Magnum Fitness Systems. It is submitted in confidence and is to be used solely for the purpose for which it is furnished. This document and such information is not to be reproduced, transmitted, or used in whole or part without written authorization.

TOLERANCES: + 0.000"
- 1/16"

UNLESS OTHERWISE SPECIFIED
DIMENSIONS ARE IN INCHES.

DRAWN BY:
RAD

MAGNUM FITNESS SYSTEMS
2201 12th. Avenue
S. Milwaukee, WI, 53172

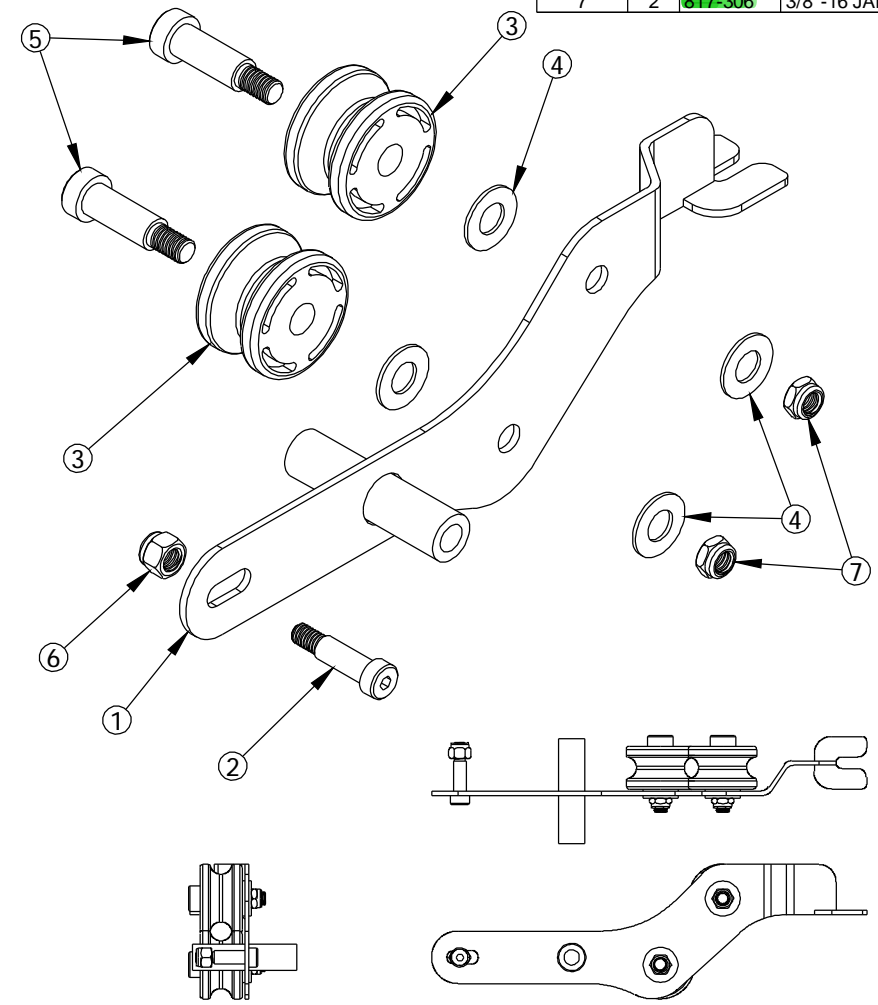
TITLE: "E" SERIES MINI STACK

| | | | |
|-------------------|---------------------|---------------------|-----------|
| DATE: 08/02/04 | PART NO. 101-143 | JOB NO. XXXXXXXX | REV: 1 |
|-------------------|---------------------|---------------------|-----------|

FILE LOCATION: C:\Cad Drawings\Solid Works\

1 OF 1

| ITEM NO. | QTY. | PART NO. | DESCRIPTION |
|----------|------|----------|-----------------------------|
| 1 | 1 | 101-083 | LEFT BANANA |
| 2 | 1 | 810-953 | 3/8" SHOULDER BOLT - 1" |
| 3 | 2 | 853-314 | ROLLER w/ BEARING |
| 4 | 4 | 818-008 | 1/2" FLAT WASHER |
| 5 | 2 | 810-954 | 1/2" x 1 1/4" SHOULDER BOLT |
| 6 | 1 | 817-406 | 3/8" NUT |
| 7 | 2 | 817-306 | 3/8"-16 JAM NUT |



This document contains information proprietary to Magnum Fitness Systems. It is submitted in confidence and is to be used solely for the purpose for which it is furnished. This document and such information is not to be reproduced, transmitted, or used in whole or part without written authorization.

TOLERANCES: + 0.000"
- 1/16"

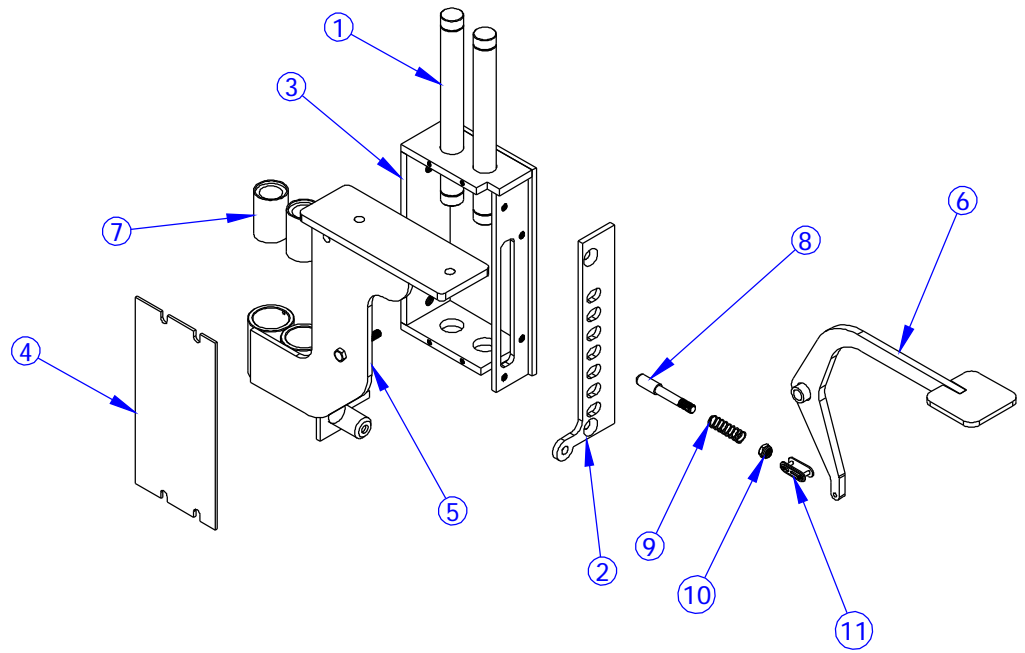
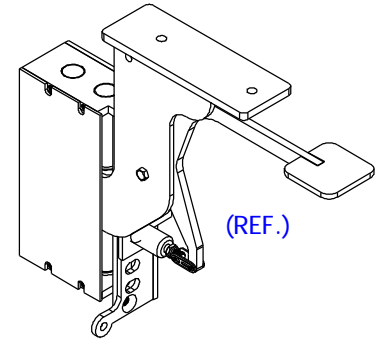
UNLESS OTHERWISE SPECIFIED
DIMENSIONS ARE IN INCHES.

MAGNUM FITNESS SYSTEMS
2201 12th. Avenue
S. Milwaukee, WI, 53172

TITLE: BANANA ASSEMBLY (LEFT)

| | | | | |
|------------------|-------------------|---------------------|---------------------|-----------|
| DRAWN BY: RAD | DATE: 08/02/04 | PART NO. 101-148 | JOB NO. XXXXXXXX | REV: 1 |
|------------------|-------------------|---------------------|---------------------|-----------|

| ITEM NO. | QTY. | PART NO. | DESCRIPTION |
|----------|------|----------|--------------------------|
| 1 | 2 | 851-009 | 1" LINEAR SHAFT - 9 3/4" |
| 2 | 1 | 339-963 | 1/4" PLASMA |
| 3 | 1 | 100-352 | SEAT BOX |
| 4 | 1 | 500-462 | 10 GA. PLASMA |
| 5 | 1 | 100-485 | SEAT BOX BRACKET |
| 6 | 1 | 101-117 | HANDLE |
| 7 | 2 | 851-203 | 1" LINEAR SHAFT BEARING |
| 8 | 1 | 855-302 | SPRING PIN w/ 5/32" |
| 9 | 1 | 852-807 | SPRING |
| 10 | 1 | 817-306 | 3/8"-16 JAM NUT |
| 11 | 1 | 700-534 | MASTER LINK |



| | | | | |
|---------------------------------------------------------------------------------------------------------------------------------------------------------------------------------------------------------------------------------------------------------------------------------------------------------------------|-------------------------------------------------------------|----------------------------------------------------------------------------------------|-----------------------------|-------------------|
| <p>This document contains information proprietary to Magnum Fitness Systems. It is submitted in confidence and is to be used solely for the purpose for which it is furnished. This document and such information is not to be reproduced, transmitted, or used in whole or part without written authorization.</p> | <p>TOLERANCES: + 0.000" - 1/16"</p> | <p>MAGNUM FITNESS SYSTEMS 2201 12th. Avenue S. Milwaukee, WI, 53172</p> | | |
| | <p>UNLESS OTHERWISE SPECIFIED DIMENSIONS ARE IN INCHES.</p> | <p>TITLE: SEAT BOX</p> | | |
| <p>DRAWN BY: Joshua Wenzel</p> | <p>DATE: 05/25/04</p> | <p>PART NO. 101-116</p> | <p>JOB NO. XXXXXXXX</p> | <p>REV: 1</p> |
| <p>FILE LOCATION: C:\Cad Drawings\Solid Works\</p> | | | | <p>1 OF 1</p> |