

C1 Upright Lifecycle-reg; Exercise Bike

C1-XX00-0203

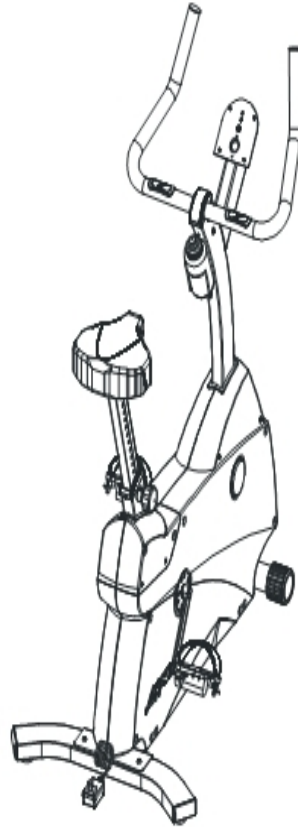
Parts Manual

2/5/2024 20:29:06 PM

Table of Contents

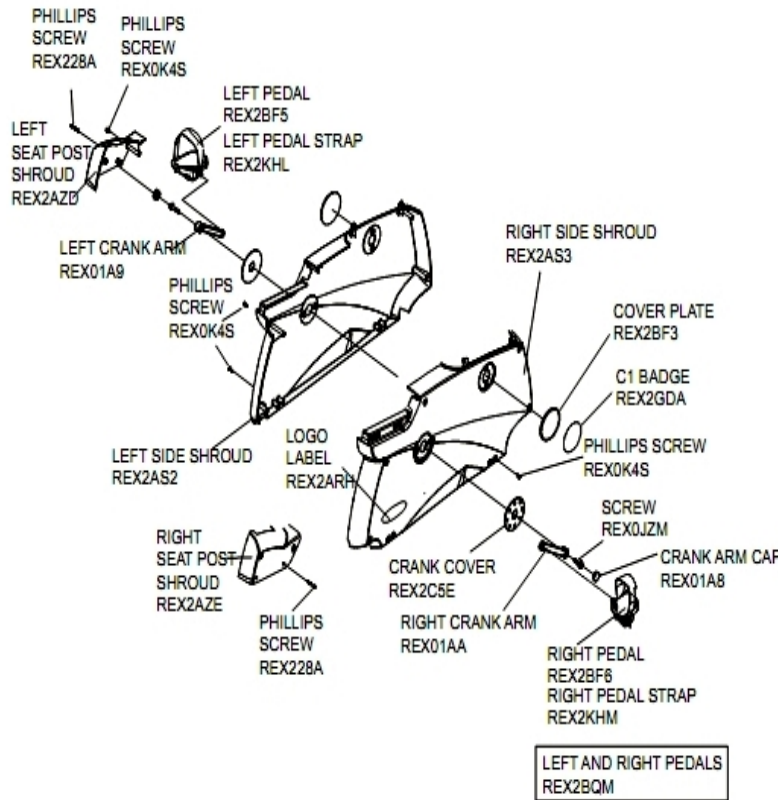
Component Assembly 1	3
Component Assembly 2	4
Component Assembly 3	5
Component Assembly 4	7
Handlebar Assembly	9

Component Assembly 1



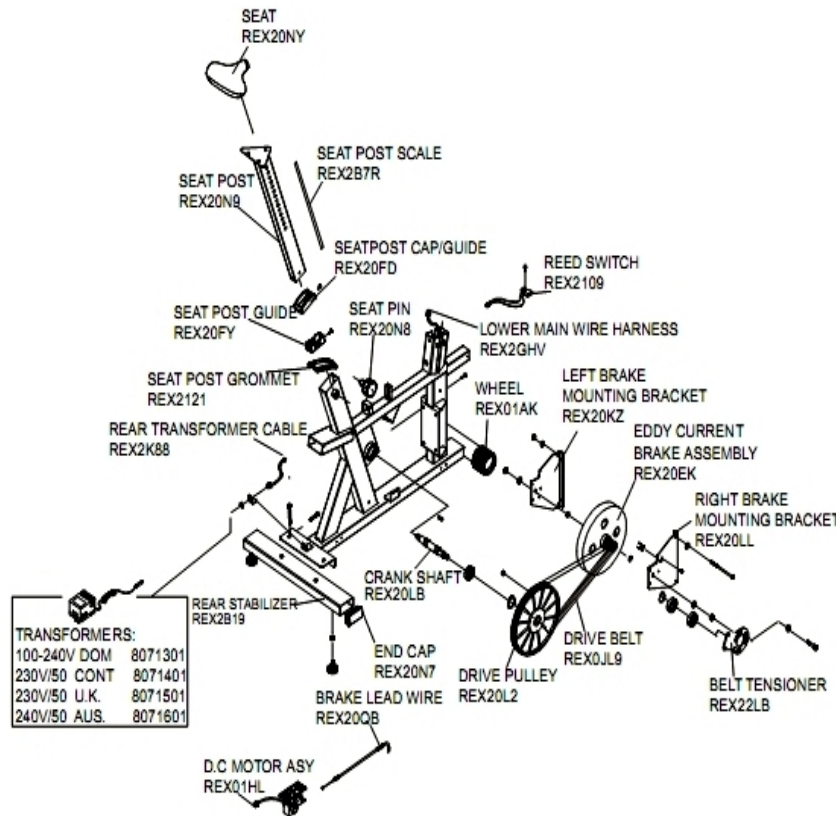
Ref #	Part Number	Qty	Description
-	8819801	1	Transformer, 100-240V, 9V, 1.5A, Domestic, W-Switic

Component Assembly 2



Ref #	Part Number	Qty	Description
-	REX0JZM	1	8-18 SCREW, HEX WASHER TYPE 25
-	REX228A	2	SCREW, PHL 5MM X 40MM
-	REX2BF5	1	PEDAL, LH
-	REX2C5E	1	COVER, CRANK
-	REX2BQM	1	Assembly Pedals
-	REX01A8	1	PLASTIC CAP. CRANK
-	REX3GJ3	1	CRANK, L
-	REX2BF6	1	Pedal, Right
-	REX2AZE	1	Shroud Or Seat Track Cover, Right
-	REX2BF3	2	Cover, Extra Crank Hole
-	REX0K4S	3	SCREW, PHL 5MM X 12MM
-	REX2GDA	2	Decal: Badge, C1
-	REX3GJ4	1	CRANK, R
-	REX2ARH	2	LABEL, LIFEFITNESS LOGO
-	REX2AS2	1	SHROUD, MAIN LT
-	REX2KHL	1	PEDAL STRAP, LEFT
-	REX2AS3	1	SHROUD, MAIN RT
-	REX2KHM	1	PEDAL STRAP, RIGHT
-	REX2AZD	1	Shroud, Upright Left

Component Assembly 3

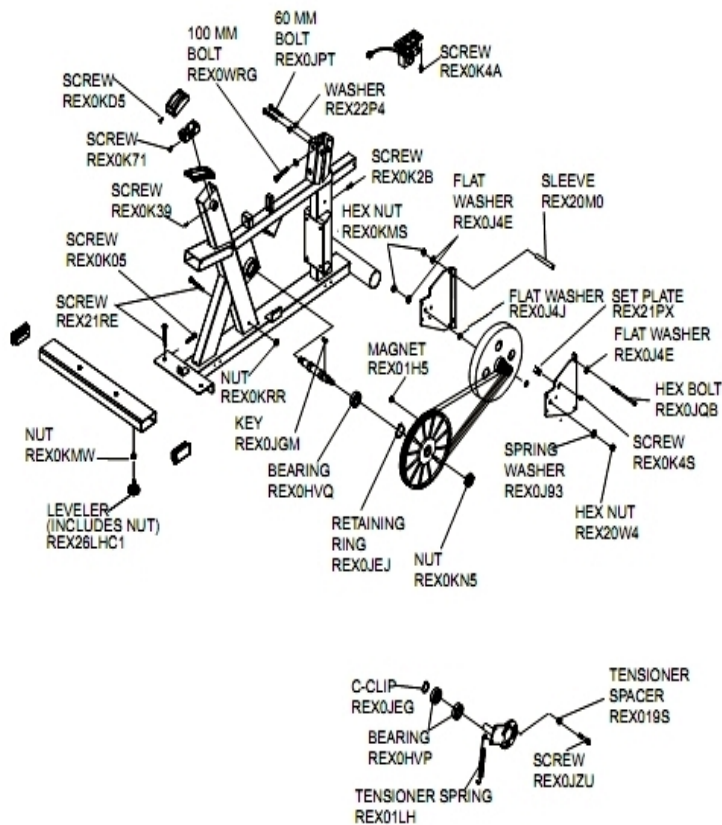


TRANSFORMERS:
 100-240V DOM 8071301
 230V/50 CONT 8071401
 230V/50 U.K. 8071501
 240V/50 AUS. 8071601

Ref #	Part Number	Qty	Description
-	REX2121	1	Grommet, Seat Position
-	REX2109	1	SENSOR, RPM
-	REX20FY	1	SPACER, SEAT POST
-	REX01AK	2	WHEEL, ASSY
-	REX2B7R	1	Decal: Label, Seat Post
-	REX20KZ	1	Bracket, Brake MTG Left
-	REX20EK	1	MAGNETIC BRAKE ASSY
-	REX20NY	1	SEAT, CUSHION
-	REX20LL	1	Bracket, Brake MTG Right
-	REX20LB	1	CRANK SHAFT
-	REX20L2	1	FLYWHEEL
-	8819801	1	Transformer, 100-240V, 9V, 1.5A, Domestic, W-Switic
-	REX2K88	1	CABLE, REAR XFORMER CONN
-	REX20QB	1	CABLE, RESISTANCE BRAKE
-	REX01HL	1	MOTOR, RESISTANCE DC
-	REX20N9	1	SEAT POST
-	REX20N7	2	CAP, 1.5 X 4.0 TUBE
-	REX2GHV	1	CABLE ASSY, MAIN
-	REX20FD	1	CAP, UPRIGHT SEAT ASSY
-	REX22LB	1	Adjust: Tensioner, Belt
-	REX0JL9	1	BELT, POLY-V
-	REX2B19	1	ASSY, REAR FOOT STABILIZER

Ref #	Part Number	Qty	Description
-	REX20N8	1	KNOB, SEAT ADJUSTER

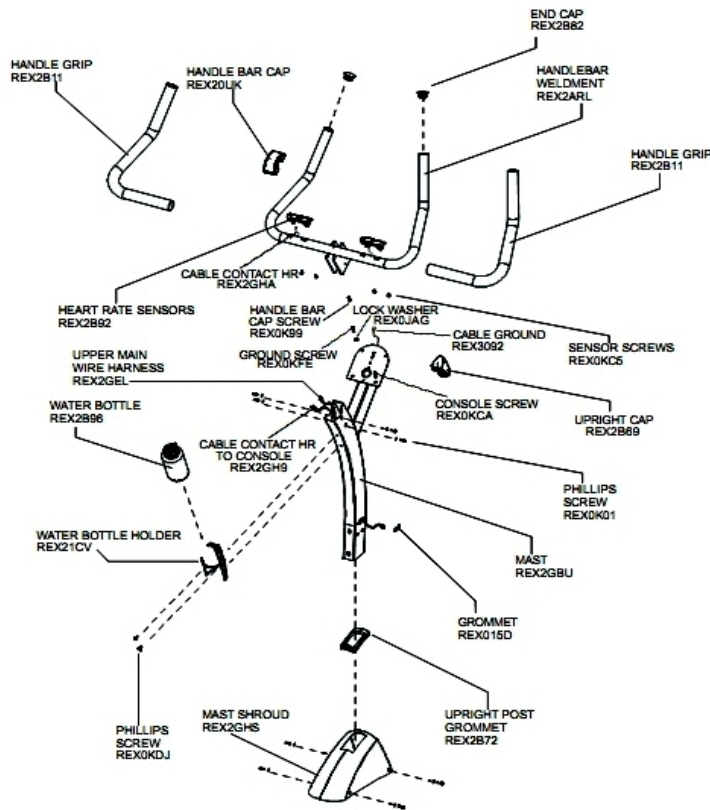
Component Assembly 4



Ref #	Part Number	Qty	Description
-	REX0K4A	1	SCREW, M5*0.8-20 PHL PAN HD
-	REX0J4J	1	WASHER, FLAT .10*20-2
-	REX0JEJ	1	RING, RETAINING, 63/64
-	REX0KD5	1	SCREW, PAD HD M4 X .7-6MM
-	REX0WRG	1	BOLT, 8MM X 100MM
-	REX0J4E	3	WASHER, FLAT 6MM*13-1
-	REX019S	1	SPACER, TENSIONER
-	REX01H5	1	MAGNET Rexon
-	REX21PX	1	PLATE, SET
-	REX22P4	1	WASHER, 8MM ID X 18MM OD
-	REX0JQB	1	BOLT, HEX HD M6*1.0-110
-	REX20W4	1	NUT, HEX M10 X 1.5-6
-	REX0KRR	1	Serrated Toothed Hexagon Flang
-	REX0HVP	2	BEARING BALL 6004ZZ
-	3225301	1	BEARING, 12MM BALL
-	REX0KMS	2	NUT, HEX M6*1.0 T=5
-	REX01LH	1	SPRING, TENSIONER
-	REX0K39	1	SCREW, M5*0.8-12MM PAN HD
-	REX0K4S	1	SCREW, PHL 5MM X 12MM
-	REX0K05	1	SCREW, SHCS 8MM X 20MM
-	REX2NFK	4	LEVELER, LEG
-	REX21RE	2	Hardware: Screw, SHCS 8MM X 50MM

Ref #	Part Number	Qty	Description
-	REX0JEG	1	C-RING, A-20
-	REX20M0	1	Sleeve, 93MM
-	REX0JGM	1	KEY, CRANK
-	REX0KN5	1	NUT, M19 LOW PROF
-	REX0K2B	1	SCREW, SHCS BRAKE MTG
-	REX0K71	1	SCREW, 8MM SEAT POST
-	REX0JZU	1	SCREW, SHCS BRAKE MTG
-	REX0JPT	2	BOLT, 8MM X 60MM
-	REX0J93	1	WASHER, SPRING 1.0

Handlebar Assembly



Ref #	Part Number	Qty	Description
-	REX2GH9	1	CABLE ASSY, HAND PULSE HARNESS TO CONSOLE
-	REX2ARL	2	HANDLE BAR ASSY
-	REX2GHS	1	SHROUD, ACCESS COVER
-	REX2B92	2	Sensor, Heart Rate
-	REX3092	1	CABLE ASSY, GROUND
-	REX2GBU	1	WLDMT, UPRIGHT C1-5
-	REX2GEL	1	LEAD WIRE ASSY (Upper Console)
-	REX2B69	1	Cap, Upright End
-	REX2B82	2	CAP, HANDLE BAR END
-	REX2GHA	1	CABLE ASSY, HAND PULSE HARNESS
-	REX2B72	1	GROMMET, UPRIGHT POST
-	REX21CV	1	HOLDER, WATER BOTTLE
-	REX0KCA	1	SCREW, M5*12-12 PHL RND
-	REX2B96	1	Accessory: Water Bottle
-	REX015D	1	GROMMET, UPRIGHT OVAL
-	REX0KC5	1	SCREW, HR SENSOR MTG
-	REX2B11	3	Grip, Handle
-	REX0KFE	1	SCREW, GND
-	REX0JAG	1	WASHER, LOCK EXT. TOOTH BZ
-	REX20UK	1	CAP, HANDLEBAR
-	REX0K99	1	SCREW, HANDLE BAR CAP
-	REX0KDJ	2	SCREW, PHL 5MM*.8 X 12MM

Ref #	Part Number	Qty	Description
-	REX0K01	4	SCREW, SHCS 5MM X 15MM

