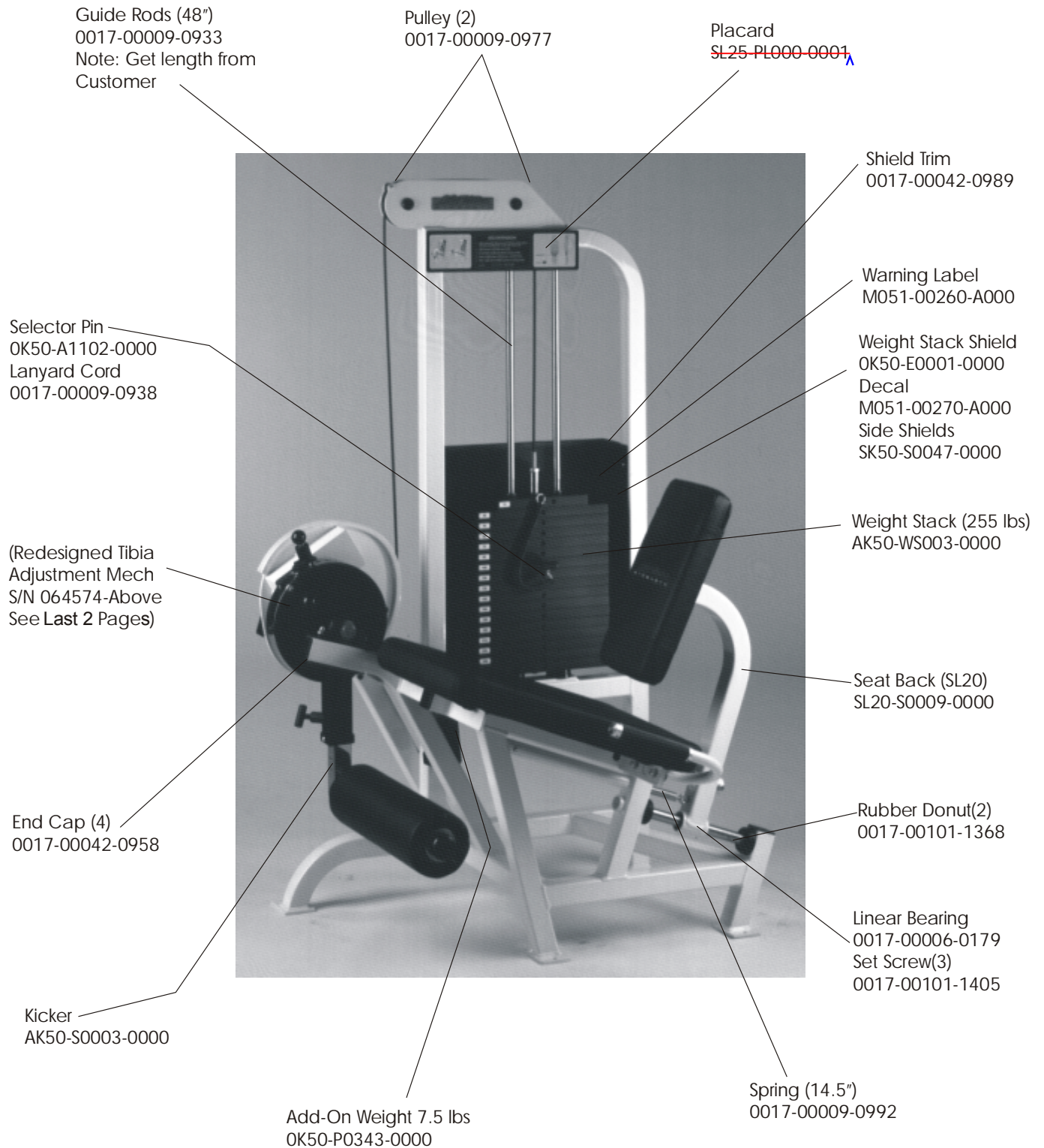


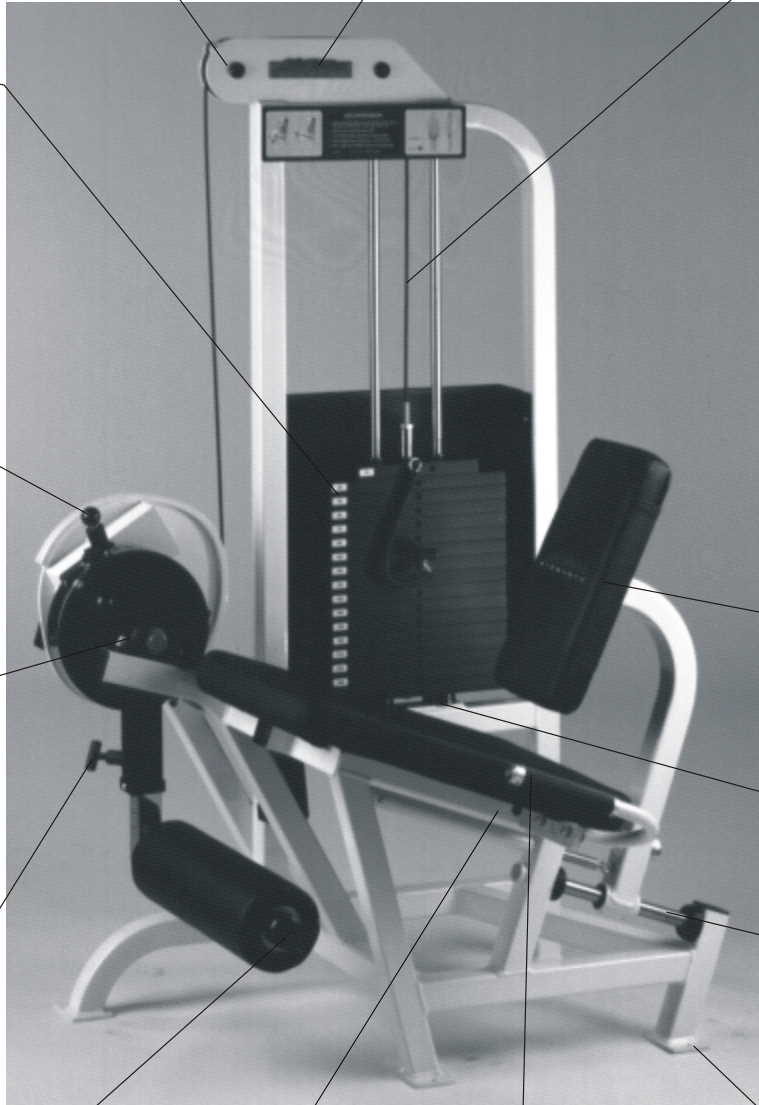
# STRENGTH 9000 SERIES TRAINING EQUIPMENT

## SL20/25 Leg Extension



# STRENGTH 9000 SERIES TRAINING EQUIPMENT

## SL20/25 Leg Extension



Black Cap(11)  
0017-00042-0969

Label (2)  
OK50-01001-0000

Cable  
AK50-CL109-0001

Weight Stickers  
M051-00262-A000  
(15-300 LBS.)  
M051-00265-A000  
(7-140 KG.)

Pull Pin Kit  
SK50-S0001-0000  
Pull Pin Kit (Range L)  
SK50-S0008-0000

Black Pad Set  
SL25-FEA02-0P01  
Seat Pad  
OK50-US016-0000  
Knee Pad  
OK50-US044-0000  
Back Pad  
OK50-US060-0000  
Kicker Pad  
OK50-US008-0000  
Wear Cover  
OK50-UE004-0000

Pillow Block (2)  
0017-00006-0203  
Red Rubber Cap (2)  
0017-00042-0952

Weight Donut (2)  
0017-00042-0993

T-Knob   
AK50-S0005-0000

INTERNAL COMPONENTS:

Zinc Coated Angle Iron   
OK50-P0494-0000

PLASTIC ANGLE   
OK50-P0325-0000

Hardware for Plastic Angle   
screw: 0017-00101-1396   
washer: 0017-00104-0347

Rubber Cap  
0017-00042-0955  
Shaft Collar(2)  
0017-00009-0945  
Washer(2)  
0017-00104-1382

See Page 3 for "under seat"   
components.

Handle (Bolt On)  
SL20-S0006-0000  
Rubber Grip  
0017-00042-0995  
Grip Ring (2)  
OK50-P0316-2000  
Grip Cap (2)  
OK50-P0315-2000  
Set Screw  
0017-00101-1406

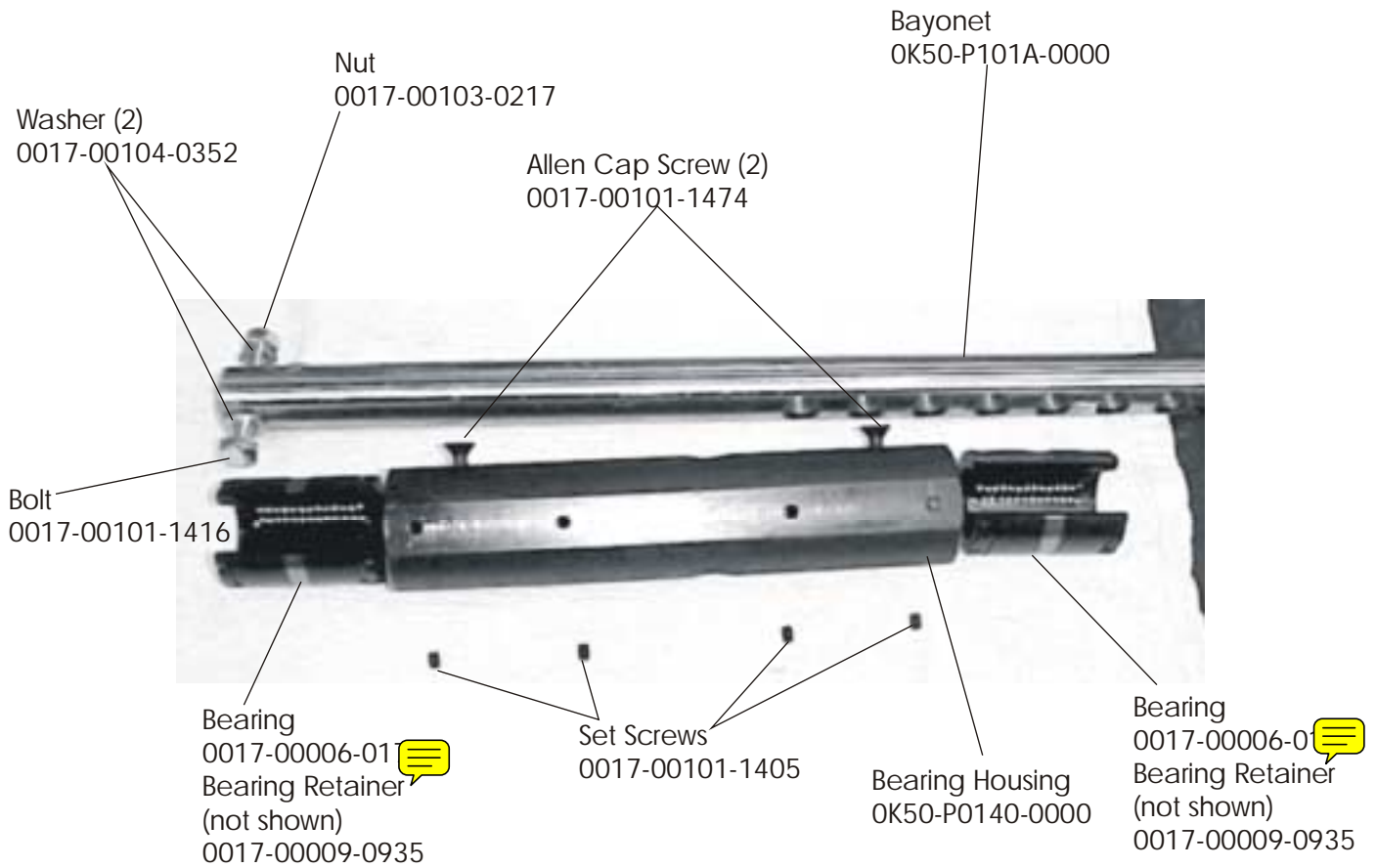
Linear Shaft (16.5")  
OK50-P101B-0000

Foot Pad 4 - 3"x4"  
0017-00042-1019

# STRENGTH 9000 SERIES TRAINING EQUIPMENT

## SL20/25 Leg Extension - Under Seat Bearing Housing

---



# STRENGTH 9000 SERIES TRAINING EQUIPMENT

## SL20/25 Leg Extension - Range Limiter

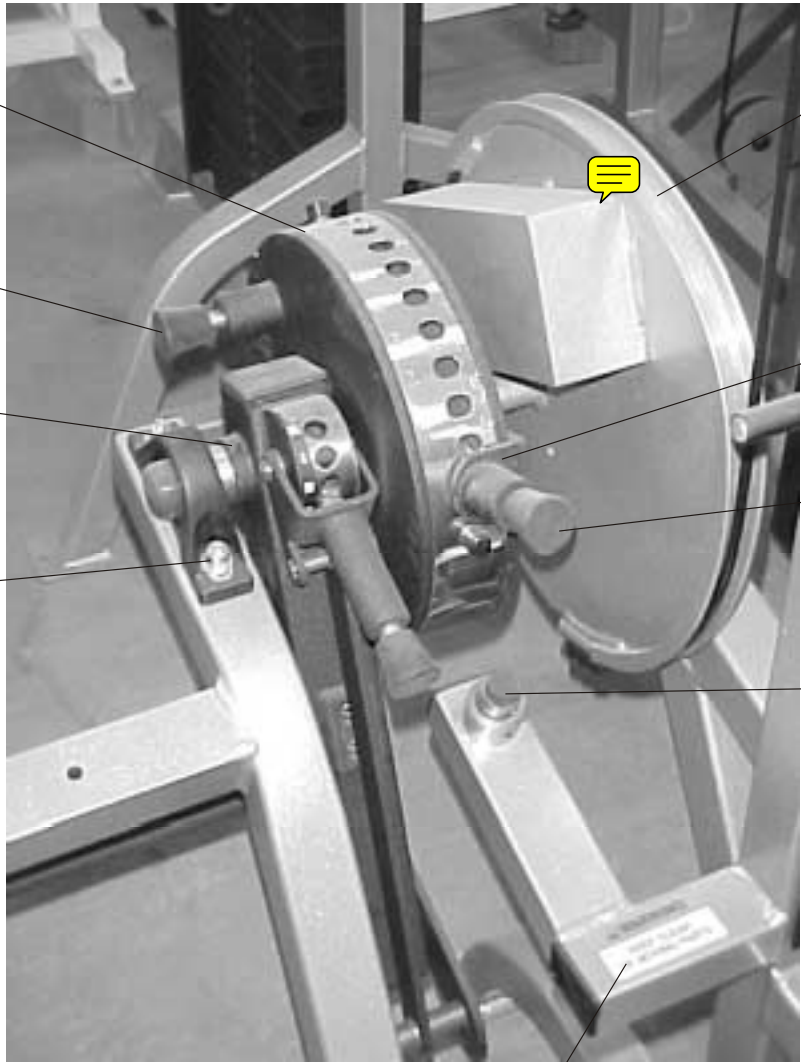
SL20-S0011-0000

Polished Hub  
 SL25-S0006-0000  
 SL35-S0005-0000  
 SL45 AK50-S0012-0000  
 ST25-S0006-0000

Pull Pin Kit  
 SK50-S0008-0000

Shaft Collar  
 0017-00009-0942

3-1/4" Bolt  
 0017-00101-1425  
 Washer  
 0017-00104-0313  
 Cap Washer  
 0017-00104-0368  
 3/8" Nut  
 0017-00103-0229  
 Star Washer  
 0017-00009-0937  
 Back Cap  
 0017-00042-0949



Cam Assembly  
 SL25-S0008-0000  
 SL35-S0003-0000  
 SL45-S0011-0000  
 ST25-S0010-0000

Common Plate  
 AK50-S0008-0000  
 (Used on all R/L Units)

Pull Pin Kit  
 SK50-S0008-0000

Brass Bushing  
 0017-0009-0925  
 Machined Part  
 OK50-PO324-0000  
 Spring  
 0017-0009-0995  
 Rubber Stop  
 0017-00103-0265  
 Set Screw  
 0017-00101-1448

Small Warning Decal  
 M051-00293-A000

OLD STYLE Tibia (Kicker)  
 SL25-S0005-0000  
 SL35-S0004-0000  
 SL45-S0011-0000  
 ST25-S0005-0000

# Service Bulletin



Bulletin #	Revision	Distribution	Date	Author
ST01041701	Original	<input checked="" type="checkbox"/> Domestic <input type="checkbox"/> International	April 17, 2001	Taylor

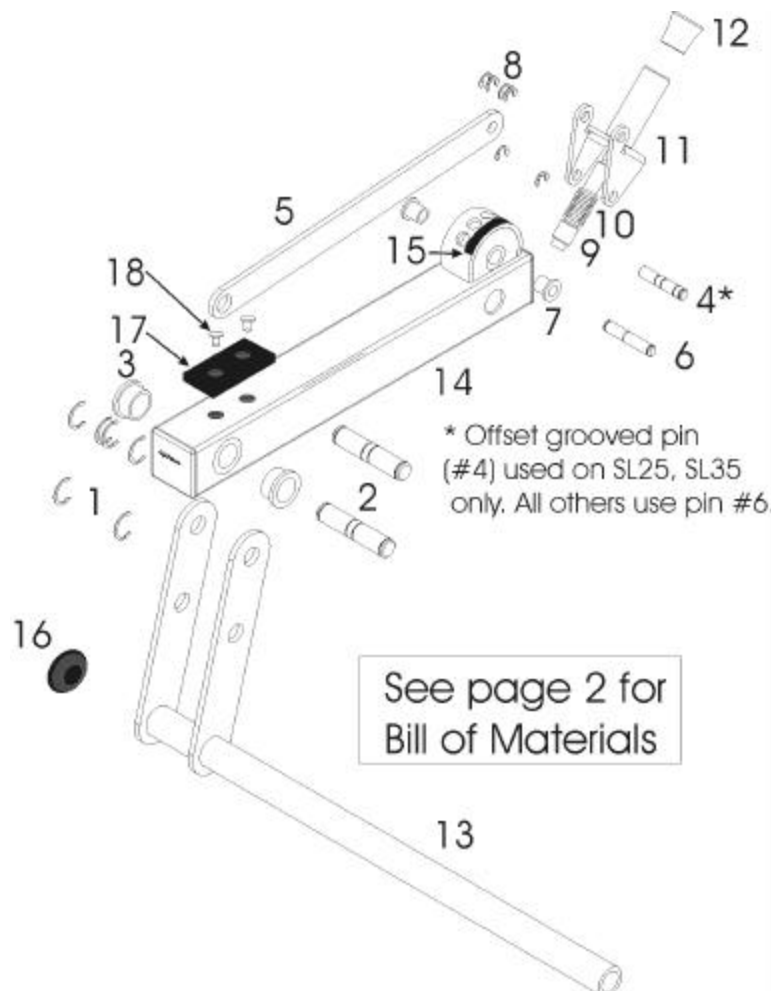
**Subject:** Redesigned Tibia Adjustment Mechanism

**Serial Number:** SL20 SN064553, SL25 SN064574, SL30 SN070587, SL35 SN070857, SL40 SN064555, SL45 SN064712, ST20 SN070509, and ST25 SN070642

**Time Required:**  15 min  30 min  45 min  1 hr +

**Classification:**  Internal  Dealer  General

A redesigned tibia adjustment mechanism is factory installed on models and serial numbers as indicated above. Use exploded view and the corresponding parts list as necessary.



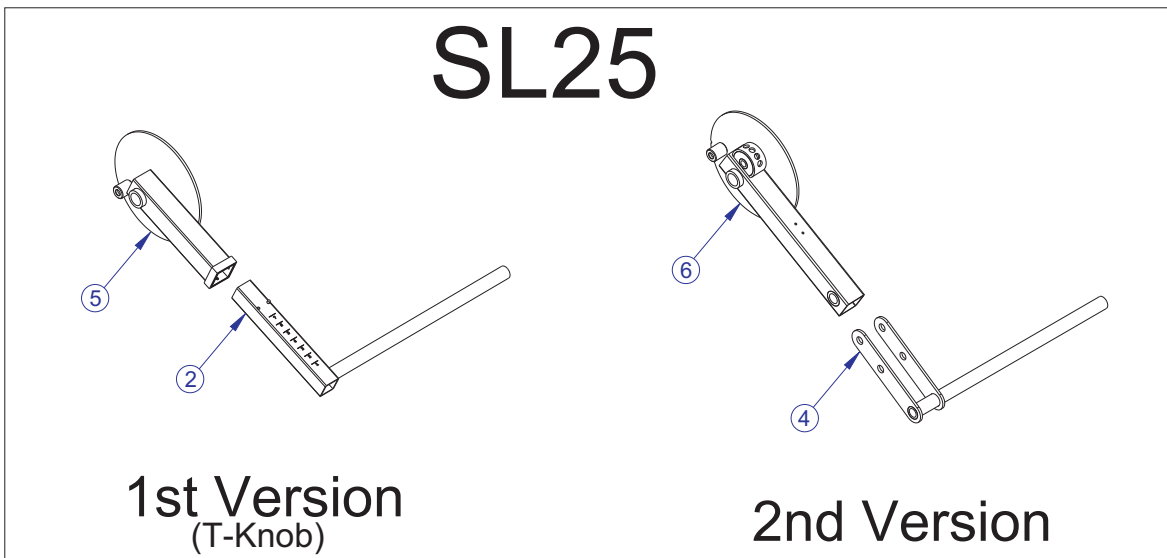
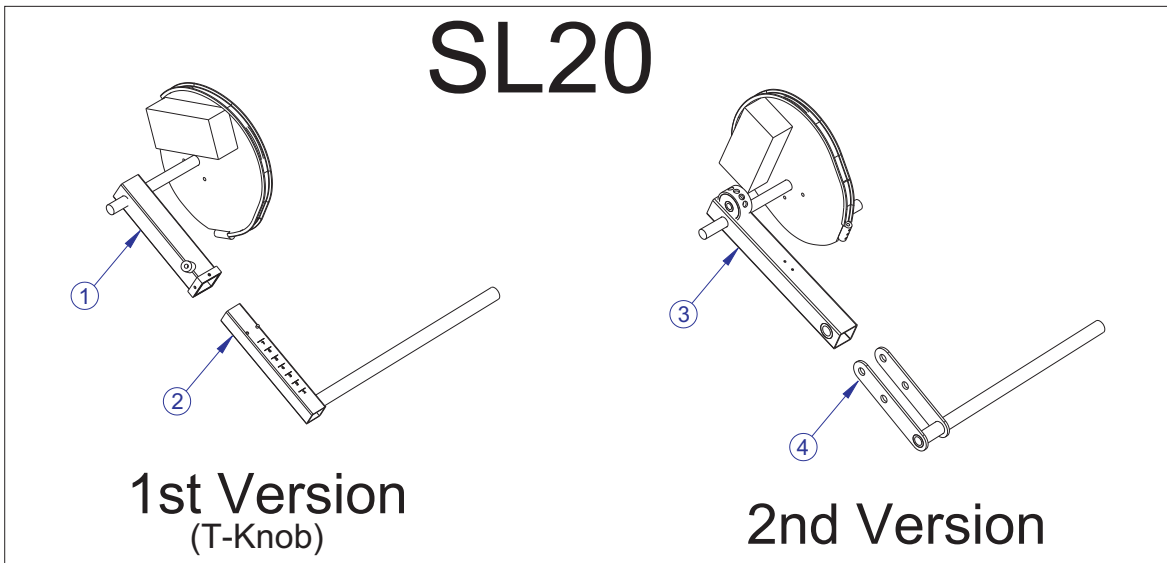
## PARTS FOR TIBIA ADJUSTMENT MECHANISM

Item	Qty	Part Number	Description
1	6	0017-00100-0192	3/4" Retaining Clips
2	2	0K50-P0544-0000	3/4" Grooved Pins
3	2	0017-00009-0929	3/4" Bushings
4	1	0K50-P0582-0000	7/16" Offset Pin (SL25 and SL35)
5	1	0K50-P0573-0000	Kicker Link (SL40 and SL45)
5	1	0K50-P0553-0000	Kicker Link (SL20 and SL25)
6	1	0K50-00564-0000	7/16" Grooved Pin
7	2	0017-00009-0931	7/16" Bushings
8	6	0017-00100-0191	7/16" Retaining Clips
9	1	0K50-P0121-0000	Handle Pin
10	1	0017-00009-0994	Spring
11	1	AK50-S0030-0000	Pull Pin Bracket
12	1	0017-00009-1077	Tulip Handle
13	1	AK50-S0031-0000	Swivel Pad Mount
14	1	SL20-S0011-0000	Kicker Tube
		SL25-S0009-0000	
		SL30-S0005-0000	
		SL35-S0001-0000	
		SL40-S0014-0000	
		SL45-S0012-0000	
		ST25-S0011-0000	
		ST20-S0008-0000	
15	1	M051-00360-A000	Letter Strip (SL20 and SL25)
		M051-00362-A000	Letter Strip (SL30, SL35, SL40, SL45, ST20, ST25)
16	1	0017-00009-1091	Black Cap
17	1	0017-00042-1032	Bumper
18	2	0017-00072-0136	Rivets

# STRENGTH 9000 SERIES TRAINING EQUIPMENT

## SL20/SL25 Leg Extension - Workarms and Kickers

---



ITEM NO.	QTY.	PART NO.	DESCRIPTION
1	1	SL20-S0007-0000	SUB CAM-AXLE
2	1	AK50-S0003-0000	SUB ASSY KICKER; STRENGTH
3	1	SL20-S0011-0000	SL20 KICKER/CAM SUB
4	1	AK50-S0031-0000	ROLLER PAD ROCKER ARM
5	1	SL25-S0007-0000	SUB KICKER SELECTOR PLATE
6	1	SL25-S0009-0000	RANGE LIMITER KICKER SUB