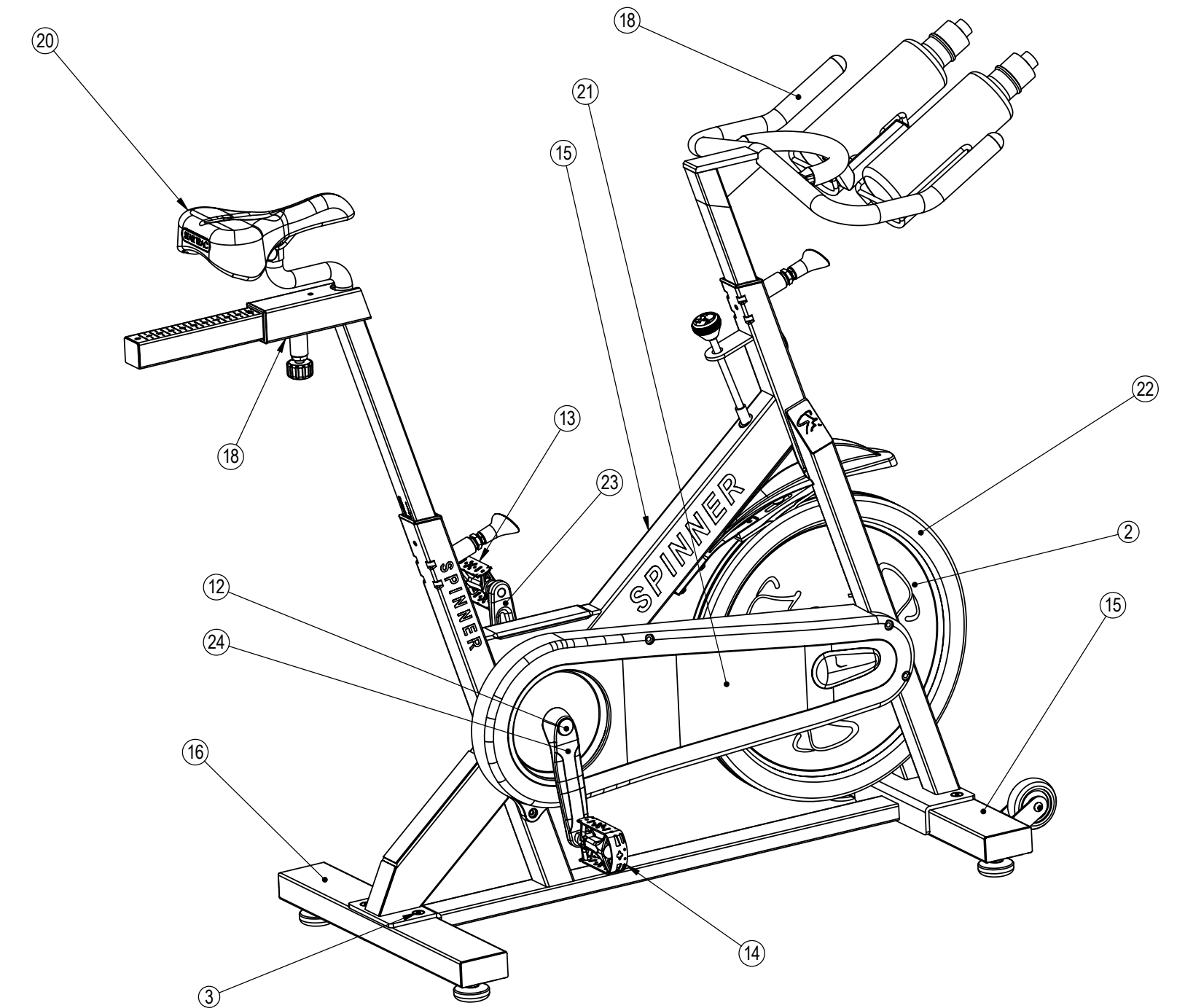
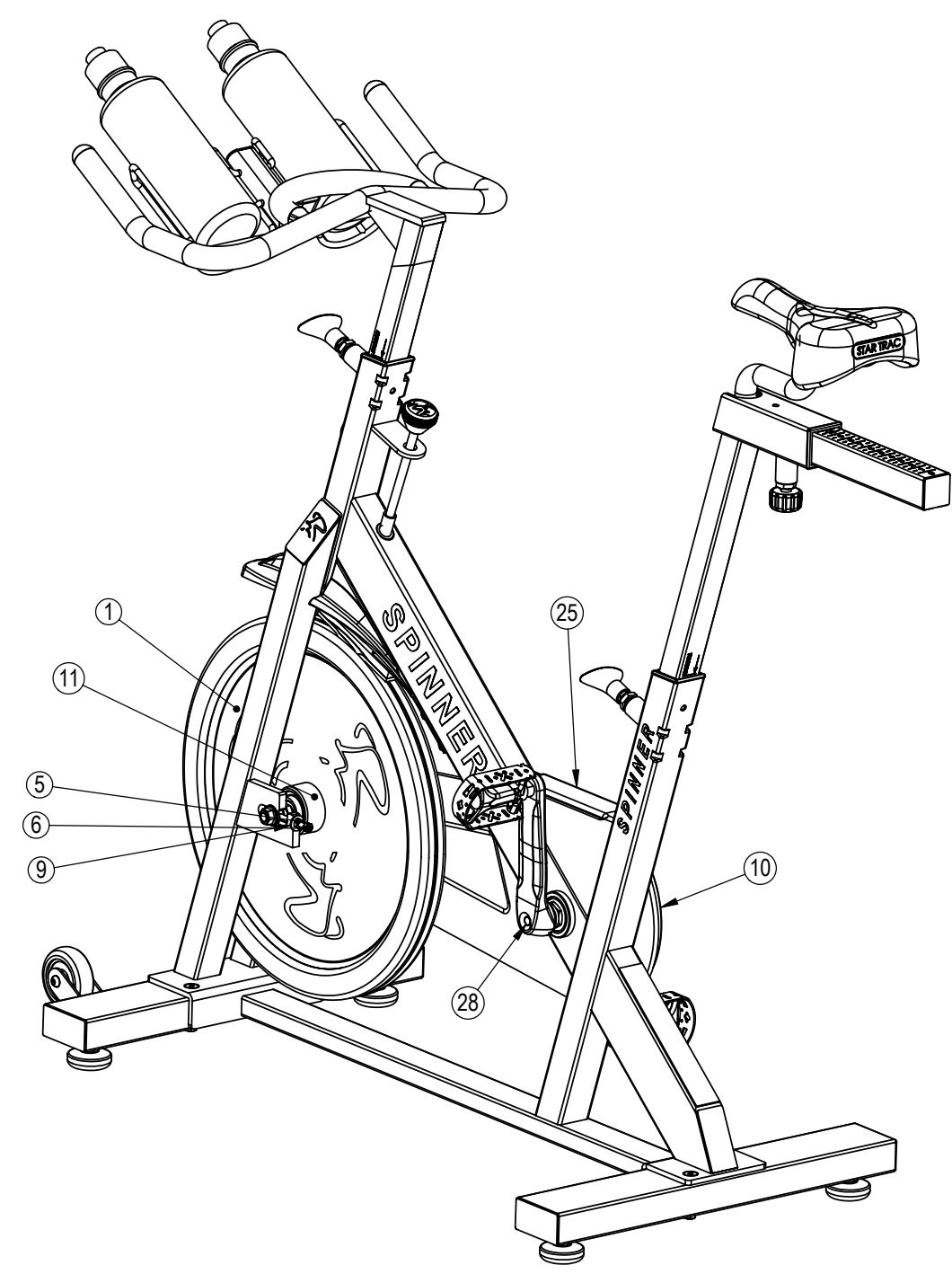


REVISIONS				
REV	DATE	DESCRIPTION	ECO	BY
X1	08-27-04	PRELIMINARY RELEASE.		RKL
A	10-21-04	PRODUCTION RELEASE.	11193	RKL
B	05-11-05	UPDATE B.O.M. P/N.	11255	RKL
C	01-11-06	ADD P/N: 130-1714, 727-0086, 800-3405 & 800-3721. DELETE P/N: 800-3841.	11387	RKL



ITEM NO.	PART NO.	VendorNo	DESCRIPTION	QTY.	NOTES
1	050-1943-01	311-00001-1100	LABEL, FLYWHEEL, LEFT, SPINNER 6900	1	
2	050-1943-02	311-00001-1101	LABEL, FLYWHEEL, RIGHT, SPINNER 6900	1	
3	110-3323	658-1-0080-00 (B18.3.5M-8X1.25X55 SOCKET FCHS-55N)	SCREW, M8 X 1.25 X 55, SOCKET FCHS	4	
4	110-3324	664-2-0080-00 (B18.2.4.1M-HEX NUT, STYLE 1, M8X1.25-D-N)	NUT, HEX, STYLE 1, M8 X 1.25	4	
5	110-3325	M6 NUT (B18.2.4.1M-HEX NUT, STYLE 1, M6X1-D-N)	NUT, HEX, STYLE 1, M6 X 1	2	
6	110-3326	653-1-0060-04 (B18.2.3.5M-HEX BOLT M6X1.0X50 -50N)	BOLT, HEX, M6 X 1.0 X 50	2	
7	120-3288	321-6-2502-00	WASHER, CRANK, SPINNER	2	
8	120-3289	603-3-0085-00 (B18.22M-PLAIN WASHER, 8MM, REGULAR)	WASHER, 8MM, REGULAR	4	
9	120-3290	605-3-0063-01 (B18.22M-PLAIN WASHER, 5MM, REGULAR)	WASHER, 5MM, REGULAR	2	
10	130-1741	311-6-1614-00	CHAIN, 112 LINKS, SPINNER 6800/6900	1	
11	140-3317	301-6-1714-00	CAP, RUBBER, FLYWHEEL, SPINNERS	1	
12	140-3322	311-6-1602-00	CAP, CRANK, SPINNER	2	
13	727-0014-01	321-6-2901-00	PEDAL, L, SPINNER, SPD	1	
14	727-0014-02	321-6-2900-00	PEDAL, R, SPINNER, SPD	1	
15	727-0032	311-4-1002-00	ASSY., FRAME, SPINNER 6900	1	
16	727-0033	311-4-1401-00	ASSY., FOOT, FRONT, W/WHEEL & FEET, SPINNER 6800/6900	1	
17	727-0034	311-4-1501-00	ASSY., FOOT, REAR, W/RUBBER FEET, SPINNER 6800/6900	1	
18	727-0037	311-4-1205-00	ASSY., SEATPOST, W/TENSION KNOB & INSERT, SPINNER 6900	1	
19	727-0038	311-3-1104-11	ASSY., HANDLEBAR, W/BOTTLE HOLDER, 6900	1	
20	727-0041	311-4-1304-00	ASSY., SEAT W/SLIDER, SPINNER 6900	1	
21	727-0044	311-4-2107-00	ASSY., CHAIN COVER, SPINNER 6800/6900	1	
22	727-0045	321-4-2000-00	ASSY., FLYWHEEL, W/CLUTCH, SPINNER 6900	1	
23	727-0053-01	311-6-1604-00	CRANK, LEFT, SPINNER 6800/6900	1	
24	727-0053-02	311-6-1605-00	CRANK, RIGHT, SPINNER 6800/6900	1	
25	727-0086	311-6-2400-00	ASSY., COVER, STEP THROUGH, 6800/6900	1	
26	800-3405	301-6-1622-00	STRAPS, PEDAL, SET	1	INCLUDED AS SPARE
27	800-3721	311-4-1800-00	ASSY., BRAKE PAD, SPINNER	1	INCLUDED AS SPARE
28	800-3938	301-6-1603-00 (B18.2.3.4M-HEXFLANGE SCREW, M8X1.25X25 -25N)	BOLT, BOTTOM BRACKET, 22MM, SPINNERS	2	

NOTES:

NOTICE OF PROPRIETARY INFORMATION
THIS DOCUMENT SHALL NOT BE REPRODUCED NOR SHALL THE INFORMATION CONTAINED HEREIN BE USED BY OR DISCLOSED TO OTHER EXCEPT AS EXPRESSLY AUTHORIZED BY UNISEN

MATERIAL	TOLERANCES UNLESS OTHERWISE SPECIFIED X.XXX = ± 0.25 (.010") ANGLES = ± 2° X.XX = ± 0.76 (.030") FRACTIONS = ± 1/32 X.X = ± 1.27 (.050") X. = ± 3.20 (.125")		UNISEN INC. 14410 Myford Road Irvine CA 92606	
REFER TO B.O.M.	FINISH	DRAWN	INITIAL	DATE
	NONE	CHECKED	RKL	08-27-04
		APPROVED		
		U.O.M.	MM	
TITLE		SCALE	SIZE	PART NO
C SPINNER, ELITE, 6900		1:1	C	9-6900-SINTPO
REV		SHEET 1 OF 1		