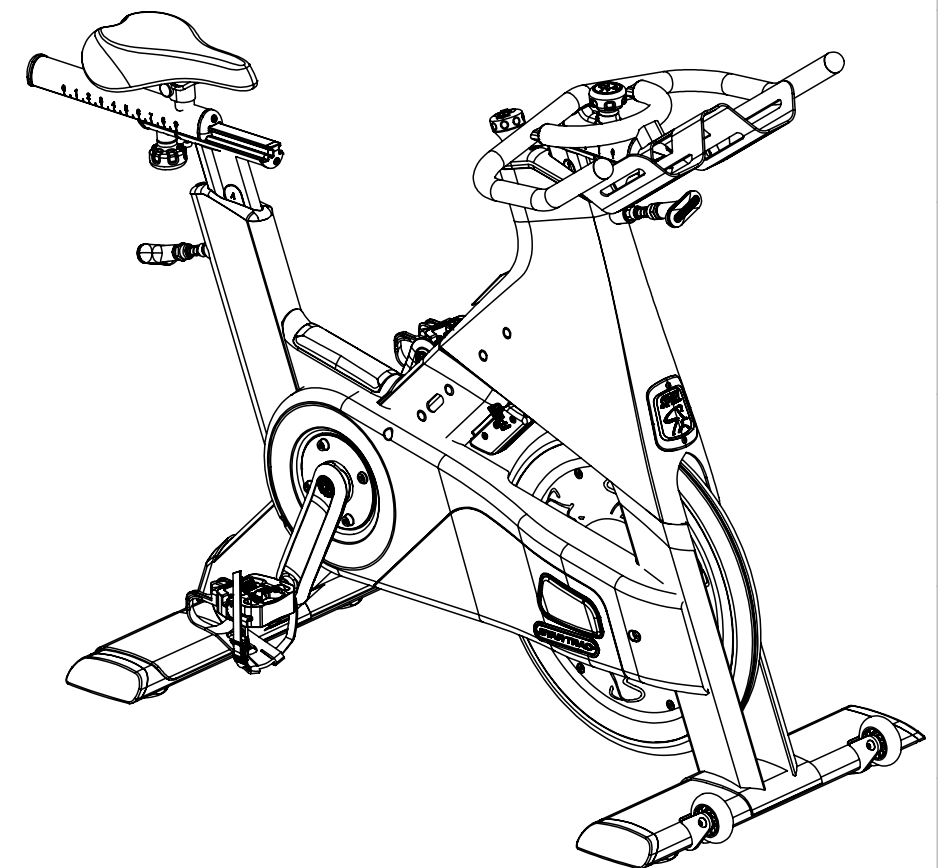
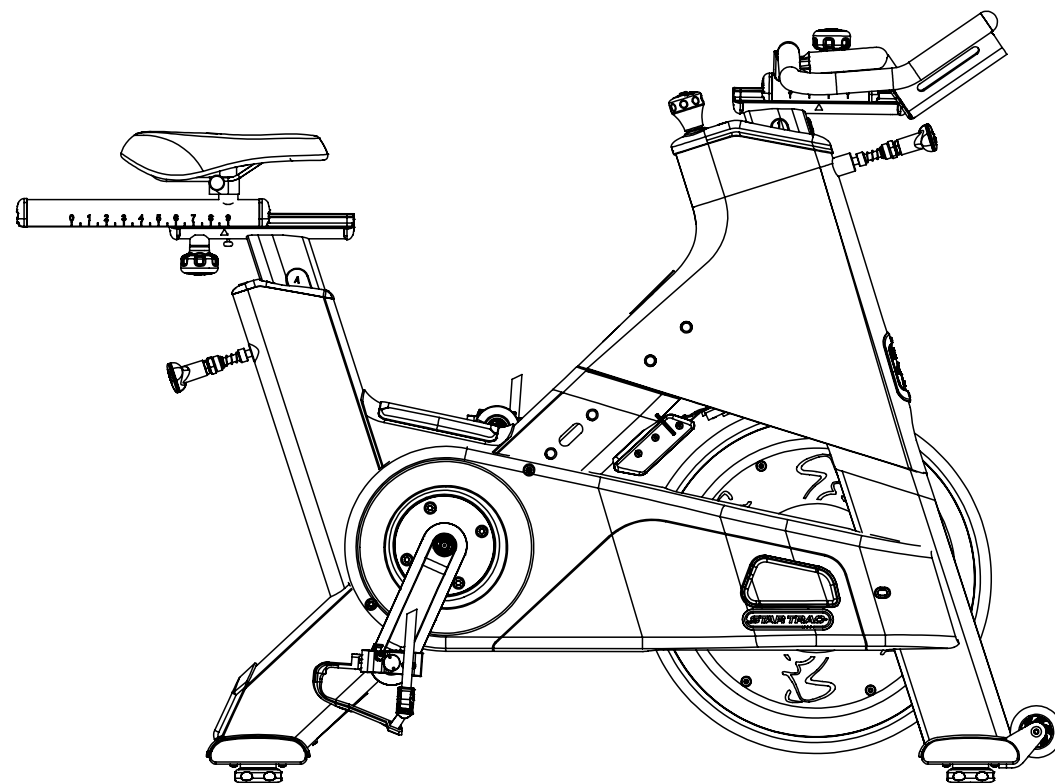
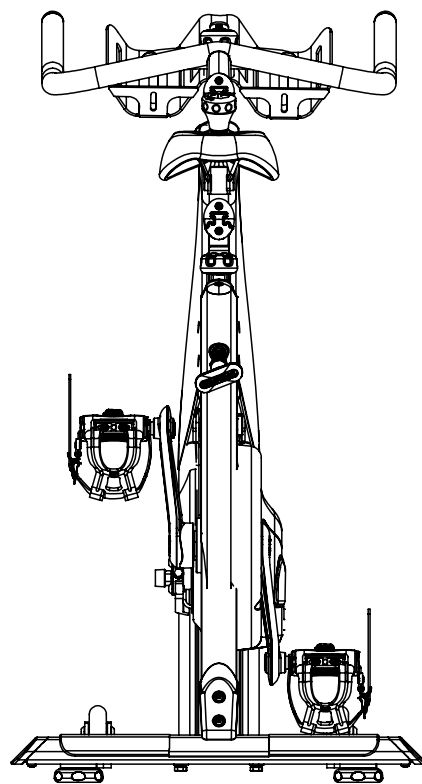
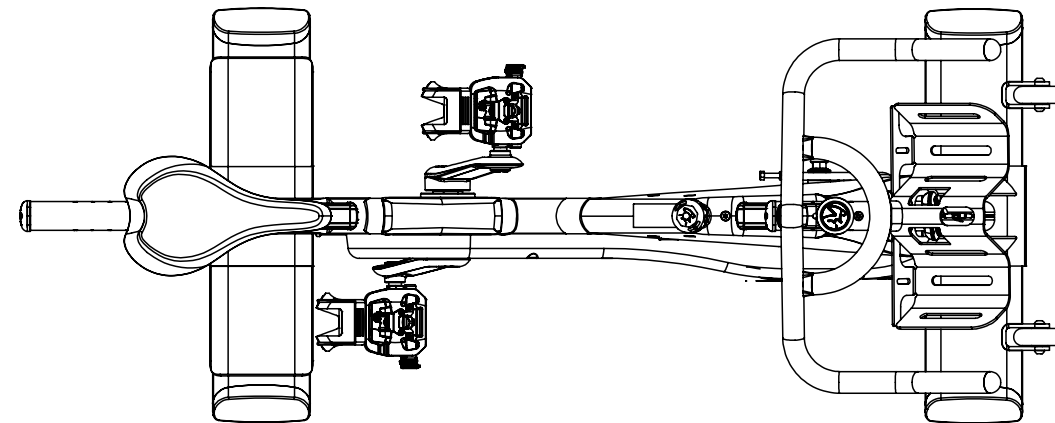


NOTES:

REVISION HISTORY				
REV	DATE	DESCRIPTION	ECO	BY
A	9/10/2013	PRODUCTION RELEASE	14388	OT
B	3/19/2015	WAS 740-8291 IS 740-8766	14800	OTB2



DOCUMENT STATUS:

NOTICE OF PROPRIETARY INFORMATION
THIS DOCUMENT SHALL NOT BE REPRODUCED NOR SHALL THE INFORMATION CONTAINED HEREIN BE USED BY OR DISCLOSED TO OTHER EXCEPT AS EXPRESSLY AUTHORIZED BY CORE HEALTH & FITNESS, LLC.

CLASS OF WORK	UNLESS OTHERWISE SPECIFIED DIMS ARE IN mm. TOLERANCES FOR MEASURE OF LENGTH ARE:							ANGLES = ±2°
	0.5 to 3	> 3 to 6	> 6 to 30	> 30 to 120	> 120 to 400	> 400 to 1000	> 1000 to 2000	
FINE	±0.05	±0.05	±0.1	±0.15	±0.2	±0.3	±0.5	----
MEDIUM X	±0.1	±0.1	±0.2	±0.3	±0.5	±0.8	±1.2	±2
COARSE	±0.2	±0.3	±0.5	±0.8	±1.2	±2	±3	±4
VERY COARSE	----	±0.5	±1	±1.5	±2.5	±4	±6	±8

MATERIAL
SEE BOM

FINISH
SEE BOM

VENDOR:

P/N:

THIRD ANGLE PROJECTION



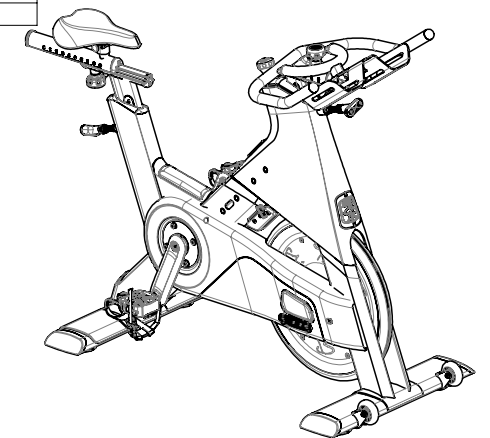
DRAWN	INITIAL OT	DATE 2/25/2014
CHECKED		
APPROVED		
	U.O.M.	MM

CORE HEALTH & FITNESS, LLC
4400 NE 77th Ave., Suite 300
Vancouver, WA 98662

CORE PART NO	REV
740-8564-XX	B
TITLE ASSY, BLADE ION BELT BIKE	
SCALE: 1:10	SHEET 1 OF 7 SHEET SIZE: B

ITEM NO.	PartNo	DESCRIPTION	QTY.
1	740-8565-XX	WELDMENT, FRAME, ION BIKE	1
2	740-7667	ASSY, POP PIN	1
3	740-7533	SLEEVE, BOTTOM BRACKET, AL	1
4	731-0373	WASHER, PLAIN, M6	2
5	740-8677	BLOCK, BRAKE ROD SLEEVE, ION BB	1
6	740-8163	COVER, GUSSET, STEPOVER	1
7	740-7931	PAD, STRETCH, RUBBER	1
8	740-8364	SLEEVE, HBAR, POST	1
9	740-7941	SLEEVE, SEAT POST	1
10	110-3458	SCREW, M6x1.0, 20mm, FHM, HE, SS	1
11	110-3507	SCREW, M6x1.0, 30mm, FHM, HK, SS	1
12	740-7182	SCREW, M5X0.8X10, BHC, HE, SS	2
13	740-7951	RETAINING RING, EXTERNAL, Ø56mm	1
14	740-8358	BADGE, LATCH, ION, SPINNER	1
15	740-8350	ASSY, W/BRK PAD, LOAD SENSOR, ION	1
16	740-8687	ASSY, BRAKE, ADJUSTMENT KNOB, ION	1
17	110-3447	SCREW, #4x1/4, PHT, PH, CS, ZI	1
18	740-8545	CRANK BELT SPINNER, DR	1
19	740-7560	CRANK ARM, LEFT	1
20	740-7555	NUT, AXLE, B/B, M24x1.5	1
21	740-8002	SPACER, BEARING, BB SPINNER	1
22	740-7553	BEARING, 6005 SERIES, 25x47x12, 2RS	2
23	740-7554	B/B AXLE	1
24	740-7916	M5 X 16MM, DOWEL PIN	2
25	740-8145	BOLT, CRANKARM, M8	4
26	740-7614	ASSY, PEDAL, R	1
27	740-7613	ASSY, PEDAL, L	1
28	740-8544	PULLEY, 6 RIB, NXT BELT	1
29	740-7825	WASHER, 8.4MM ID x 16MM OD x 1.6 THK	4
30	740-7167	WASHER, LOCK, SPLIT, M6	4
31	731-0379	SCREW, M8 X1.25, 20mm, SHC, HK	4
32	740-7654	STABILIZER, TUBE, EXTRUDE	2
33	740-8250	SCREW, M4.8, 13mm, PHT, PH, SS	4
34	740-7656	FEET, LEVELING, SPINNER	2
35	740-7670	END CAP, FEET, BLADE	2
36	740-7653	WELDMENT, FEET STABILIZER	1
37	740-7663	WELDMENT, STABILIZER, FRT, BLADE	1
38	740-7656	FEET, LEVELING, SPINNER	2
39	740-8250	SCREW, M4.8, 13mm, PHT, PH, SS	4
40	001-0688	ASSEMBLY, TRANSPORT WHEEL	2
41	740-7187	SCREW, M6X1.25X10, BHC, HE, SS	2
42	740-8007	BOLT, WHEEL, NXT	2
43	740-7670	END CAP, FEET, BLADE	2
44	740-8525	BAR, FRAME STIFFENER, ION BB	1
45	740-8661	ASSY, PLATE, IDLER, ION BELT	1
46	140-3558	BEARING, CLUTCH, 16mm	1

ITEM NO.	PartNo	DESCRIPTION	QTY.
47	740-8539	ASSY, ROLLER, IDLER, NXT BELT	1
48	110-3556	SCREW, M6X16, HSCSH, SS	1
49	740-8541	DIE, SPRING GUIDE ROD, BELT SPINNER	1
50	110-3557	M5X16, BHSC, SS	1
51	140-3557	SPRING, 103N/mm, +/-5, 18 OD, 9 ID, 70mm LONG	1
52	740-7825	WASHER, 8.4MM ID x 16MM OD x 1.6 THK	2
53	110-3548	HALFNUT, M8X1.25	2
54	110-3550	SPACER, BRASS GUIDE, SPINNER BELT	1
55	140-3248	SPACER, BRASS, IDLER GUIDE	2
56	110-3552	SCREW, M5X0.7X20, HCSH, SS	1
57	740-8562	WASHER, BRASS, CLUTCH BEARING, NXT BELT	2
58	740-8540	D SHAFT, CLUTCH BEARING, NXT BELT	1
59	110-3551	LOCKNUT, M5X0.7	1
60	110-3592	NUT, NYLOCK, M12 X 1.5	1
61	050-1955	LABEL, WARNING, COMM, SPINNERS	1
62	050-2115	LABEL, COUNTRY OF ORIGIN	1
63	050-2125	LABEL, SERIAL NO., OEM UNIV	1
64	110-3506	SCREW, M8x1.25, 30mm, BHCS, HK, SS	2
65	110-3549	LOCKNUT, M8X1.25	2
66	110-3595	WASHER, 19.5 ODX 8.5 ID X 2mm, SS	2
67	300-156	ION SENSOR PROTECTIVE TAB	1
68	718-5513	BUSHING, FLANGE, Ø6mm ID X Ø8mm X Ø19mm	1
69	731-0373	WASHER, PLAIN, M6	3
70	731-0379	SCREW, M8 X1.25, 20mm, SHC, HK	2
71	731-0585	WASHER, M4	3
72	731-0801	NUT, RIVET, M6	5
73	740-4588	SCREW, M8 X 1.25, 16MM, BHC, HK, SS	2
74	740-7167	WASHER, LOCK, SPLIT, M6	2
75	740-7174	NUT, M6, HE, SS	2
76	740-7193	LABEL, LOGO, STAR TRAC, SPINNER	1
77	740-7296	BOLT, M6X1.0, 65MM, HEX CAP, SS	2
78	740-7601	CHAINGUARD, MAIN	1
79	740-7812	SCREW, M4x0.7, 16mm, PHMS, PH, SS	3
80	740-7825	WASHER, 8.4MM ID x 16MM OD x 1.6 THK	6
81	740-8011	BLOCK, FLYWHEEL ADJ, SPINNER	2
82	740-8171	SCREW, M6x1.0, 16mm, SHCS, HE, SS	1
83	740-8191	SCREW, M6x1.0, 30mm, SHCS, HE, SS	2
84	740-8766	CABLE, HARNESS, UPPER, SPINNER, ION	1
85	740-8339	GROMMET, CABLE, WATTS H-BAR	1
86	740-8374	ASSY, SEAT POST, BLADE, ION	1
87	740-8381	CABLE, HARNESS, LWR, SPINNER, ION	1
88	740-8524	BELT, POLY K, 6 RIB, NXT BELT	1
89	740-8571	ASSY, FLYWHEEL W/GEN, SPINNER, ION, BELT	1
90	740-8595	ASSY, H-BAR&POST, 11 ADJ, SPIN	1
91	740-8597	ENDCAP, AXLE, SPINNER FLYWHEEL	1
92	740-8663	CHAINGUARD, INNER, ION BB	1
93	740-8664	CHAINGUARD, OUTER, ION BB	1

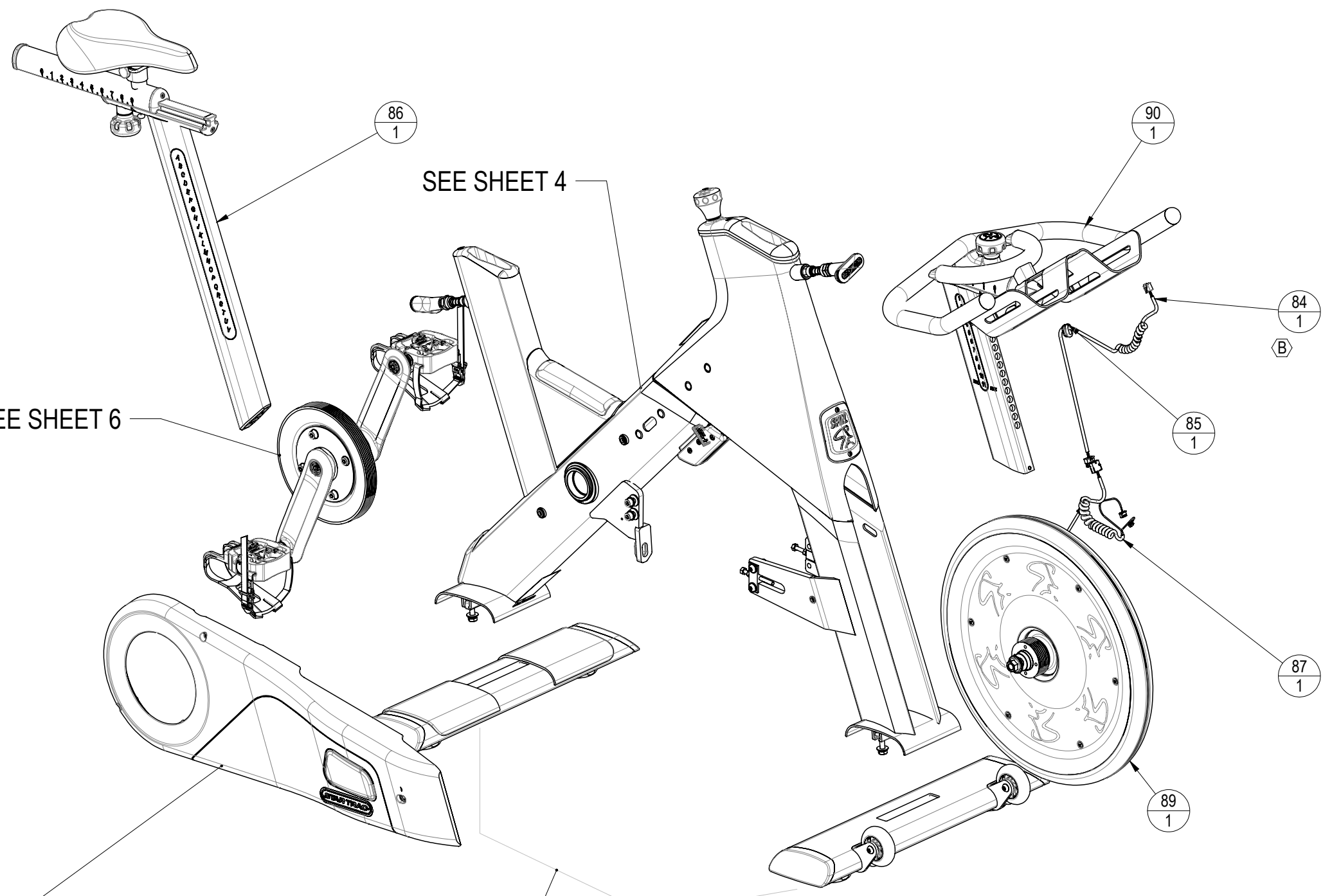


CORE HEALTH & FITNESS, LLC
4400 NE 77th Ave., Suite 300
Vancouver, WA 98662

CORE PART NO	740-8564-XX	REV	B
TITLE	ASSY, BLADE ION BELT BIKE		
SCALE: 1:20	SHEET 2 OF 7	SHEET SIZE: B	

9 8 7 6 5 4 3 2 1

- NOTES:
1. FOLLOW MFG SPEC ON PROPER INSTALLATION OF RIVET FASTER
 2. CLEAN AREAS WITH DENATURED ALCOHOL PRIOR TO ADHERING LOGOS AND LABELS
 3. TORQUE TO 15 N-m
 4. APPLY LOCTITE 242/243 MED STRENGTH THREAD LOCKER
 5. APPLY LOCTITE 609, FOLLOW PROPER APPLICATION DIRECTIONS
 6. DO NOT APPLY LOCTITE
 7. TORQUE TO 45-50 N-m
 8. TORQUE TO 65-67.8 N-m
 9. TENSION BELT TO 110 Hz +/- 5 Hz
 10. COLOR DESIGNATOR PER -XX AS SPECIFIED IN SOP 620-8222



SEE SHEET 5

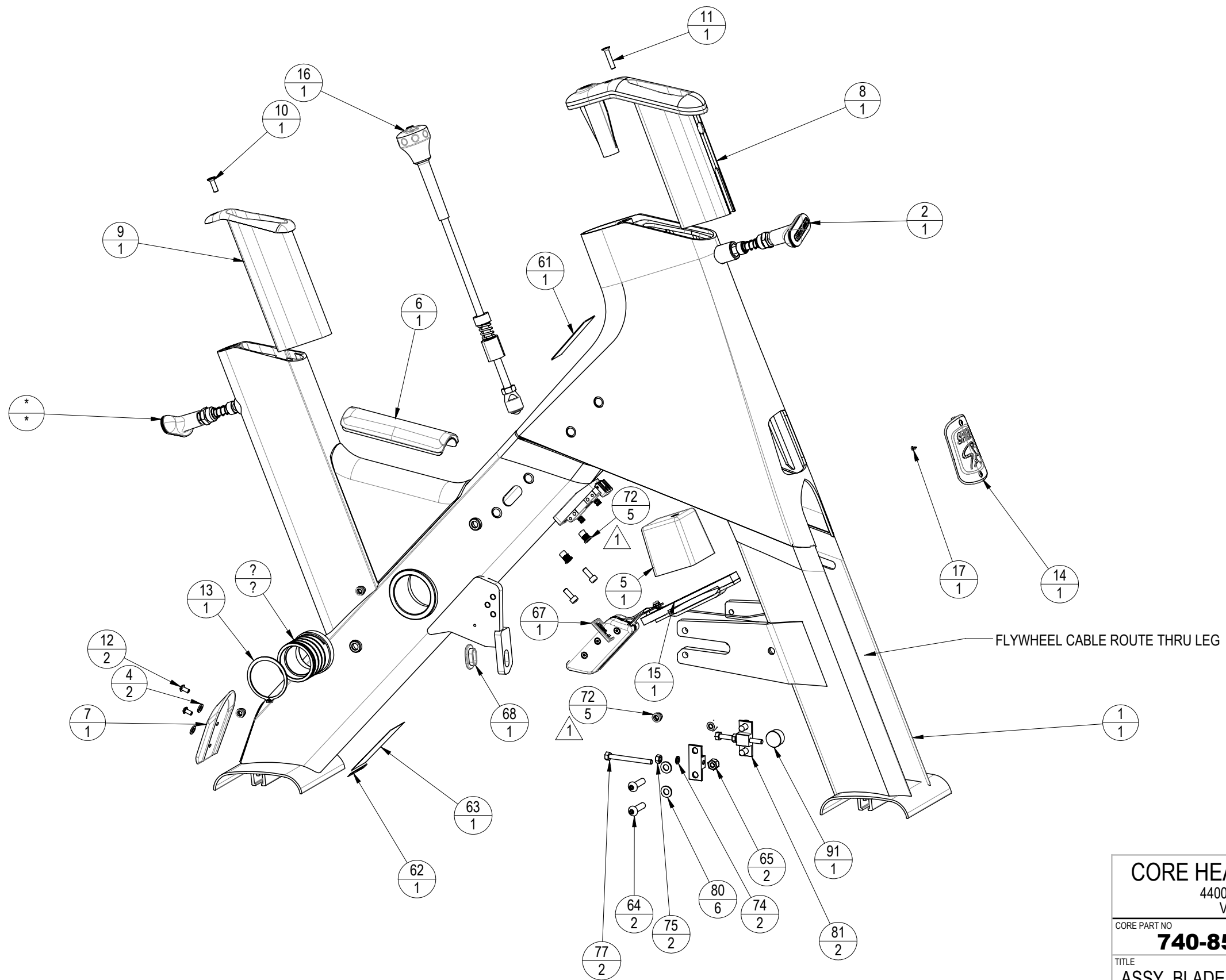
SEE SHEET 7

CORE HEALTH & FITNESS, LLC		
4400 NE 77th Ave., Suite 300 Vancouver, WA 98662		
CORE PART NO	740-8564-XX	REV B
TITLE ASSY, BLADE ION BELT BIKE		
SCALE: 1:8	SHEET 3 OF 7	SHEET SIZE: B

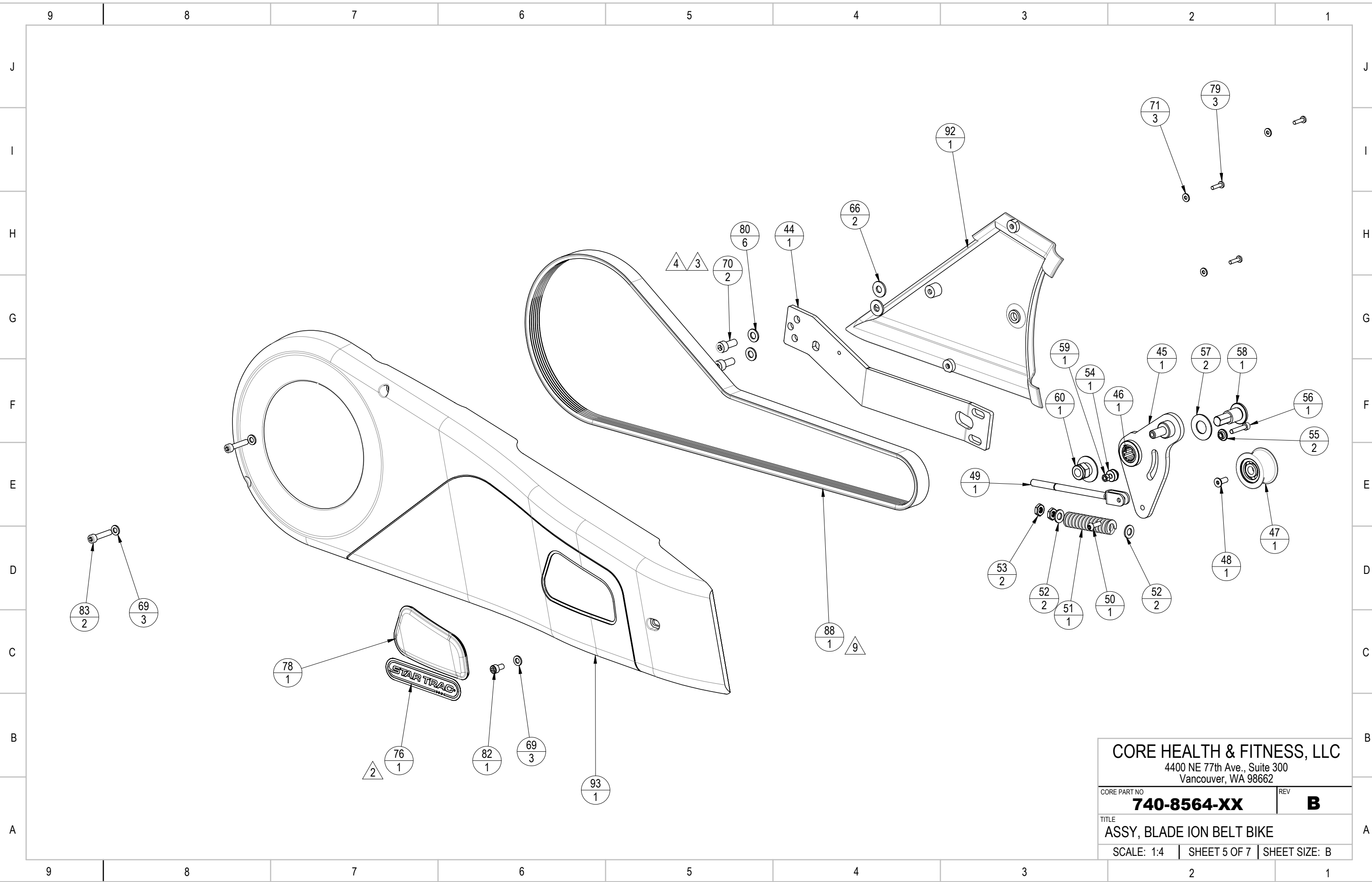
9 8 7 6 5 4 3 2 1

J
I
H
G
F
E
D
C
B
A

J
I
H
G
F
E
D
C
B
A

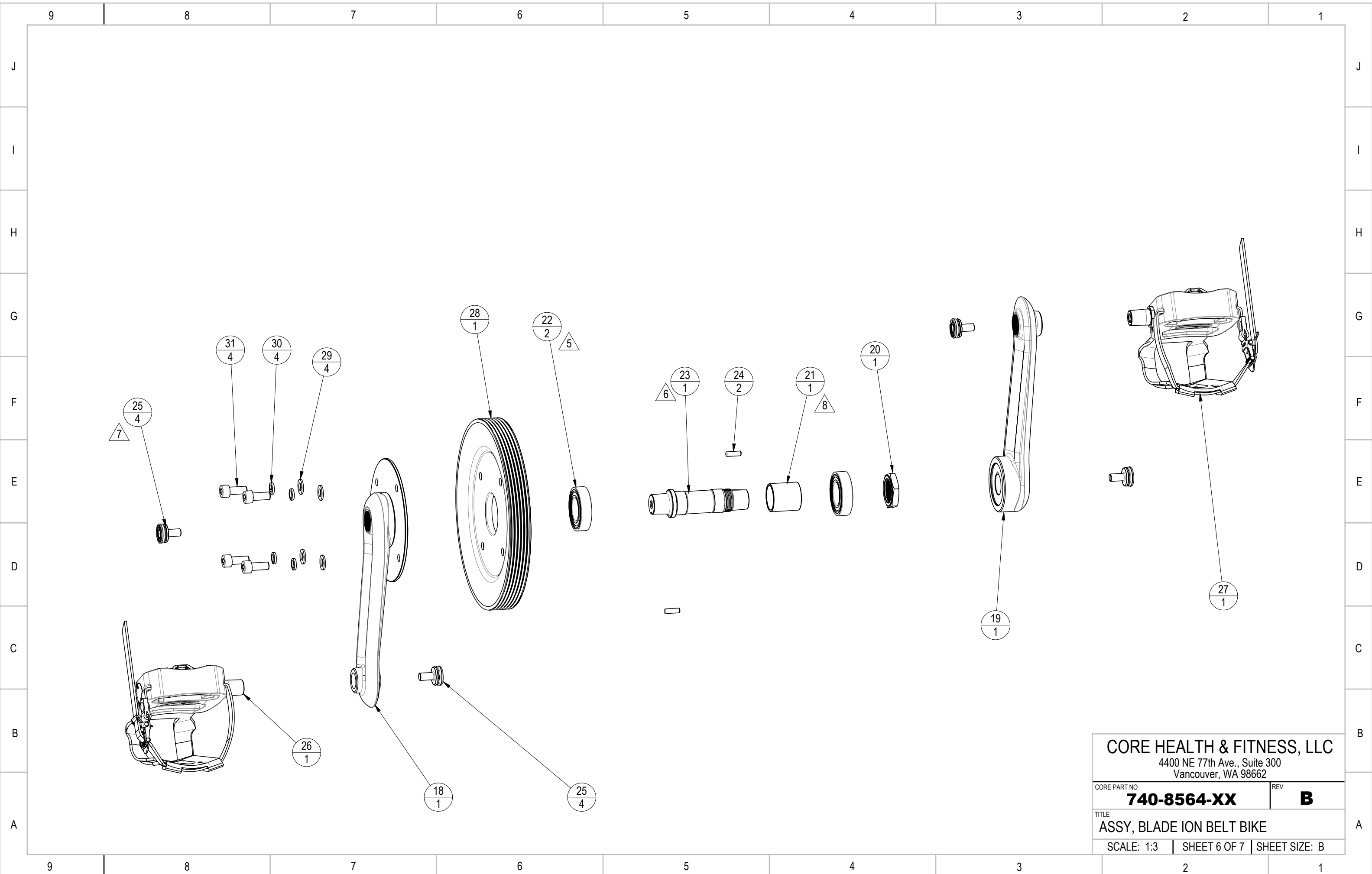


CORE HEALTH & FITNESS, LLC 4400 NE 77th Ave., Suite 300 Vancouver, WA 98662		
CORE PART NO	740-8564-XX	REV B
TITLE ASSY, BLADE ION BELT BIKE		
SCALE: 1:6	SHEET 4 OF 7	SHEET SIZE: B

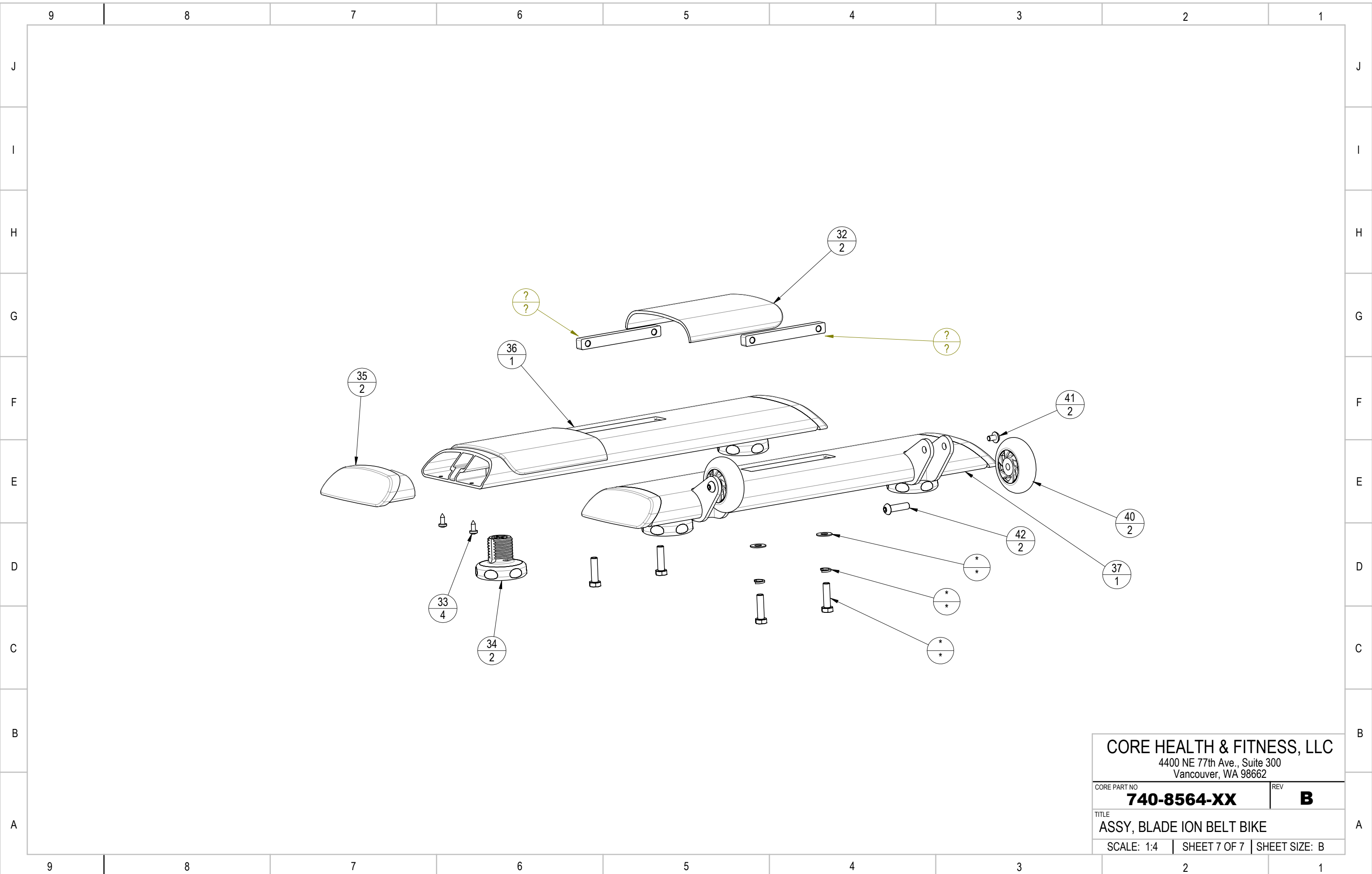


CORE HEALTH & FITNESS, LLC
 4400 NE 77th Ave., Suite 300
 Vancouver, WA 98662

CORE PART NO	REV
740-8564-XX	B
TITLE	
ASSY, BLADE ION BELT BIKE	
SCALE: 1:4	SHEET 5 OF 7 SHEET SIZE: B



CORE HEALTH & FITNESS, LLC 4400 NE 77th Ave., Suite 300 Vancouver, WA 98662		
CORE PART NO	740-8564-XX	REV B
TITLE ASSY, BLADE ION BELT BIKE		
SCALE: 1:3	SHEET 6 OF 7	SHEET SIZE: B



CORE HEALTH & FITNESS, LLC 4400 NE 77th Ave., Suite 300 Vancouver, WA 98662		
CORE PART NO	740-8564-XX	REV B
TITLE ASSY, BLADE ION BELT BIKE		
SCALE: 1:4	SHEET 7 OF 7	SHEET SIZE: B