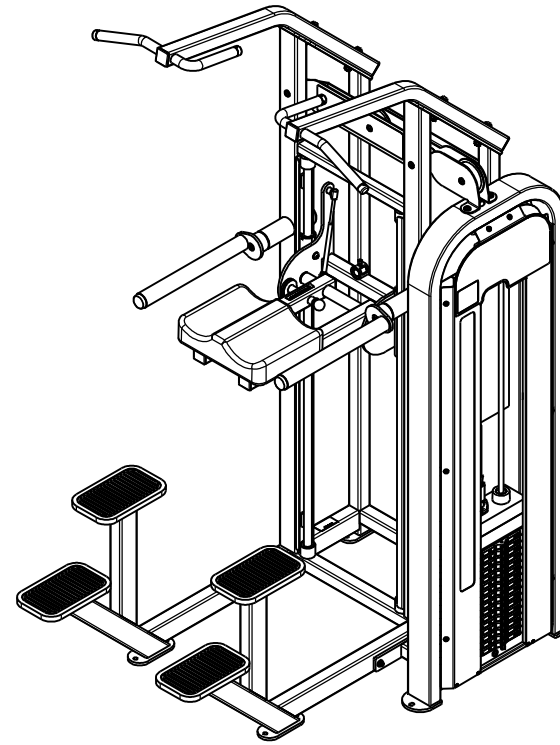
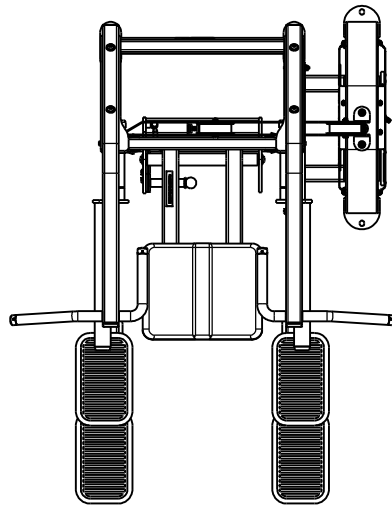
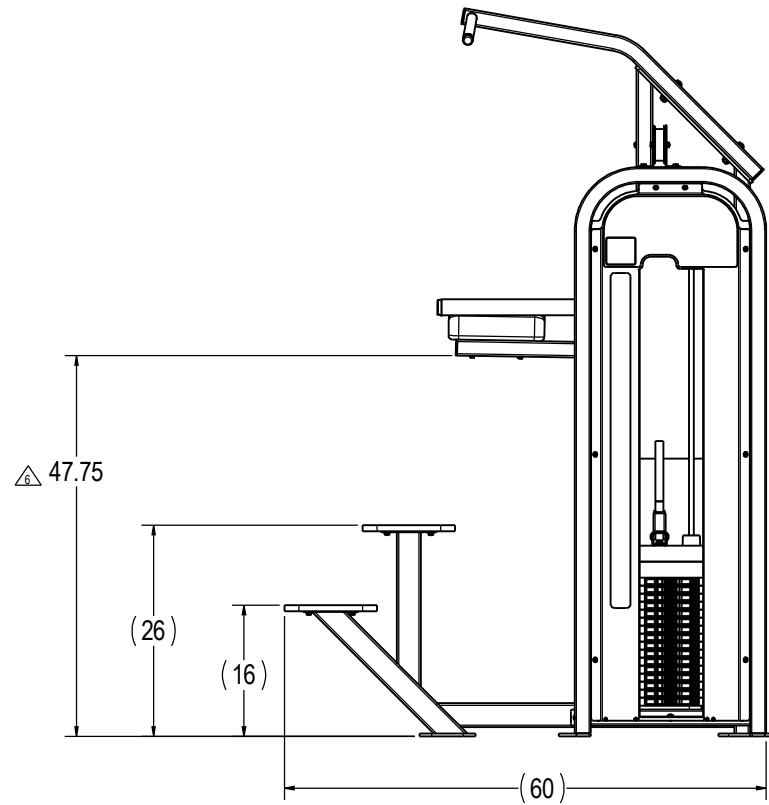
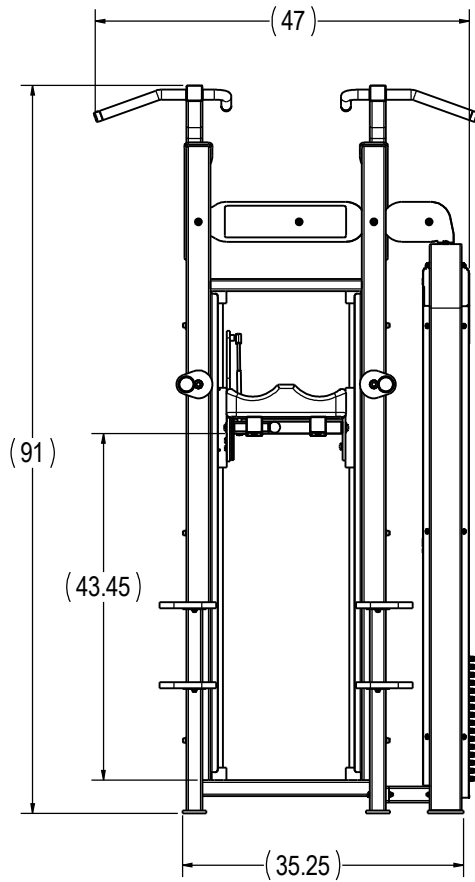


REVISION HISTORY				
REV	DATE	DESCRIPTION	ECO	BY
A	11/11/2009	PRODUCTION RELEASE	100596	SLS
B	3/1/2010	4230-0010 WAS 4230-0066	100544	CSM



ITEM NO.	PART NUMBER	DESCRIPTION	QTY.
1	3211-0129	ASSY, WELD, MAIN FRAME, CHIN DIP	1
2	3211-0130	ASSY, WELD, CHIN GRIP, LH	1
3	3211-0131	ASSY, WELD, CHIN UP, RH	1
4	3211-0132	ASSY, WELD, ADJUSTABLE GRIP	2
5	3211-0133	ASSY, WELD, KNEE SLED, CHIN DIP	1
6	3211-0134	ASSY, WELD, KNEE PIVOT, CHIN DIP	1
7	3211-0250	ASSY, WELD, W.STK CONN	1
8	2161-0025	PULLEY COVER, OUTER	1
9	2161-0026	PULLEY COVER, INNER	1
10	4900-PNTX	POWDER COAT, TBD	2.0 LBS.
11	3311-0402	ASSY, MECH, WT FRAME, S6302E LL	1
12	3500-0057	ASSY, UPHOLSTRY, 15 X 12, F-622-C	1
13	4900-UPHX	UPHOLSTRY, TBD	50 LIN. YDS.
14	1400-0001	TUBE, ROUND, 1", RUBBER, BLK	41 IN.
15	2120-0292	Guide, Bearing, 10", 1/2-20	2
16	2120-0379	STANDOFF, 2", ALUMINUM	6
17	2120-3347	CLAMP, BELT, BARREL, 1" X 1.30, KNURLED	1
18	2120-3866	SPACER, PULLEY COVERS	1
19	2120-3909	SHAFT, KNEE PIVOT, CHIN DIP	1
20	2120-4013	STOP, 1.0 SHAFT	2
21	2120-4014	CAP, BEARING TUBE STOP	2
22	2140-0273	SHEET, BENT, 16 GA X 60, GUARD	2
23	2163-0157	PLATE, FOOT PAD, MED, 11" W/HOLES	4
24	2400-0050	PAD, FOOT, RUBBER, MED.	4
25	3211-0136	ASSY, WELD, ROM, KNEE PIVOT	1
26	4210-0029	FHCS 3/8-16 X 1.00	10
27	4220-0043	SHCS 5/16-18 X 1 1/2, BLK	1
28	4220-0050	SCREW, SHCS, 3/8-24 X 4.25, Z	6
29	4230-0050	BHSCS, 3/8-16 X 1, BRIGHT, Z	2
30	4230-0053	BHSCS, 3/8-16 X 4, BRIGHT, Z	3
31	4230-0056	BHSCS, 3/8 X 3, BRIGHT, Z	2
32	4230-0057	BHSCS, 3/8 X 2 1/4, BRIGHT, Z	2
33	4230-0059	BHSCS, 3/8-16 X 4 1/4, BRIGHT, Z	1
34	4230-0060	BHSCS, 3/8-16 X 2 3/4, BRIGHT, Z	1
35	4230-0065	BHSCS, 3/8-16 X 1/2, BRIGHT, Z	2
36	4230-0071	BHSCS 1/2-13 X 3, BRIGHT, Z	4
37	4230-0075	BHSCS, 1/2-13 X 1, BRIGHT, Z	2
38	4230-0080	BHSCS, 5/16-18 X 2 3/4, BRIGHT, Z	4
39	4250-0001	SSS, 10-32 X 1/8, BLK	8
40	4500-0002	NUT, NYLOC, 5/16-18	1
41	4500-0029	NUT, NYLOC, JAM, 3/8-16, Z	18
42	4500-0044	NUT, WELD, 5/16-18, SLAB BASE	1
43	4500-0071	NUT, NYLOC, 1/2-13	4
44	4600-0005	WASHER, USS, 1/2, Z	2
45	4600-0007	WASHER, SAE, 5/16, Z	5
46	4600-0008	WASHER, SAE, 1/2, Z	8
47	4600-0009	WASHER, SAE, 3/8-16, Z	40
48	4600-0025	MACHINE BUSHING, 1", 18 GAGE	4
49	4800-0001	BELT, MECTROL, SPOOL	99 IN.
50	4900-0005	CAP, HANDLE, 1", CHROME	4
51	4900-0037	BEARING, FLANGE, 1.008 X 1.00H	2
52	4900-0118	BEARING, ROLLER, 1", L 16 OPEN	4
53	4900-0129	LINEAR SHAFT, 1" X 60	2
54	4900-0136	CAP, WEIGHT, NO INDICATOR, BLK	2
55	4900-0139	BEARING, 1 ID X 2 OD, NR16-Z	4
56	4900-0157	STOP, 1R X 1 3/8, F-DAS	4
57	4900-0183	SHOCK, 30 lbs, 9.50C X 5.50S	1
58	4900-0440	PULLEY, BELT, 4.75D, 3/8B, 1.5W, MOLDED	2
59	4900-0540	BALL STUD, 10 mm X .75" LG. THD	2
60	4900-0574	Rivet Nut, 3/8-16	2
61	4900-0576	PULL PIN, 1/2", K-520PR	1
62	4900-0588	CAP, 2.0 X 2.0, BLACK, TEXTURED	8
63	4900-0629	PIN, SPRING, 1/8 X 3/8	4
64	5210-0143	PLAC, IMPACT, HORZ, S6302, CHIN/DIP ASSIST	1
65	5220-0002	LABEL, SAFETY, KEEP HANDS, SMALL	1
66	5220-0005	LABEL, SAFETY, SECURE TO FLOOR	1
67	5290-0001	SERIAL NUMBER	1
68	050-2190	LABEL, PATENTS, LNL	1
69	4230-0010	BHSCS, 1/2-20 X .75, BRIGHT, Z	4



- NOTES:
1. INTERPRET DRAWING PER ASME Y14.5M-1994.
 2. IF APPLICABLE, CRITICAL DIMENSIONS LABELED.
 3. ALL HARDWARE IS KITTED PER 3700-0531.
 4. ALL UPHOLSTERY IS KITTED PER 3700-0253
 5. EST. GROSS WT. 835 LBS.
 6. KNEE PAD ASSY SETUP HEIGHT.

DOCUMENT STATUS:

RELEASED

UNLESS OTHERWISE SPECIFIED DIMENSIONS ARE IN INCHES. TOLERANCES ARE:
 DECIMALS .005
 FRACTIONS 1/32
 ANGLES .0154°
 HOLE DIA .015
 HOLE DIA .015
 HOLE DIA .015

MATERIAL SEE BOM

THIRD ANGLE PROJECTION



FINISH N/A

VENDOR: N/A

DRAWN SLS

CHECKED

APPROVED

DATE 10/26/2009

SCALE: 1:12

INCH

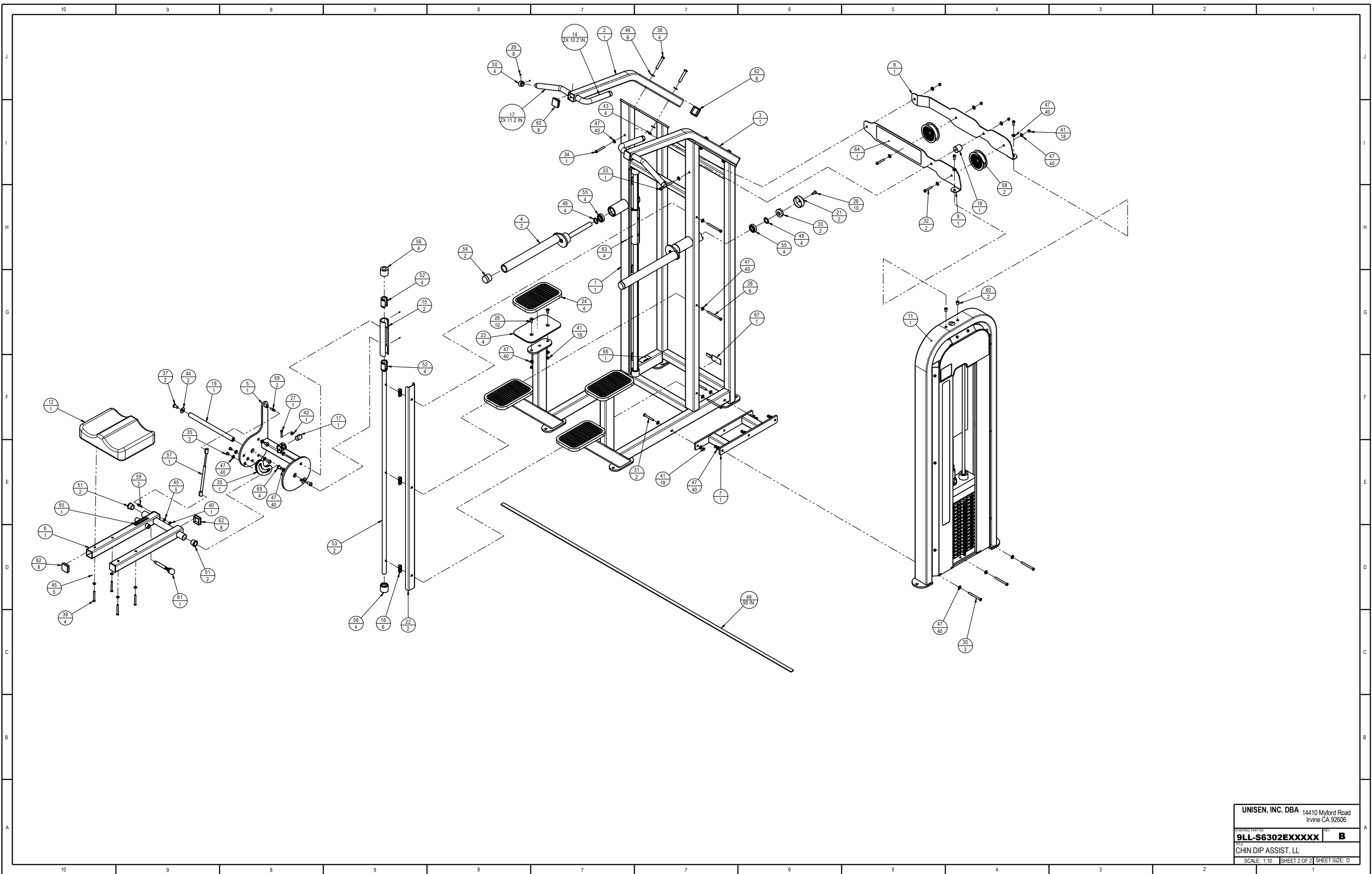
UNISEN, INC. DBA 14410 Myford Road Irvine CA 92606

911-S6302EXXXXX

CHIN DIP ASSIST, LL

SCALE: 1:12 SHEET 1 OF 2 SHEET SIZE: D

REV B



UNISEN, INC. DBA 14410 Myford Road
 Irvine CA 92606
 PART NO. 9LL-S6302EXXXXX REV. B
 TITLE CHIN DIP ASSIST, LL
 SCALE: 1:10 SHEET 2 OF 2 SHEET SIZE: D