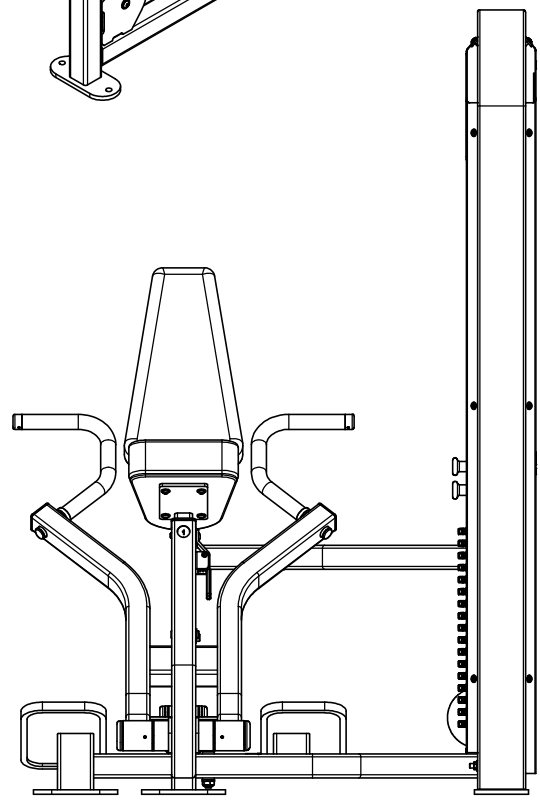
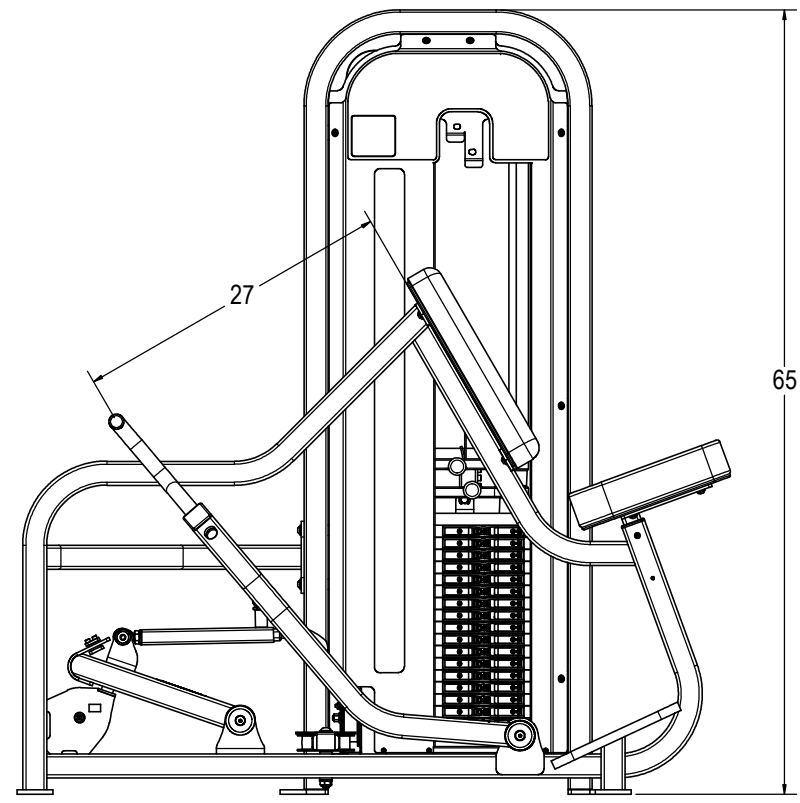
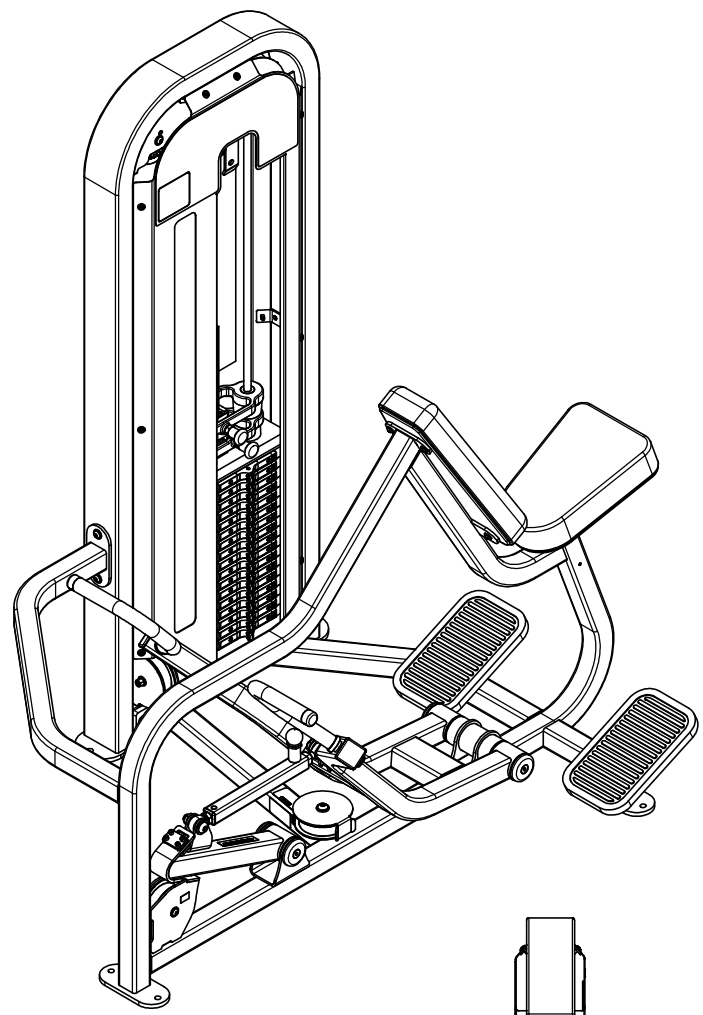
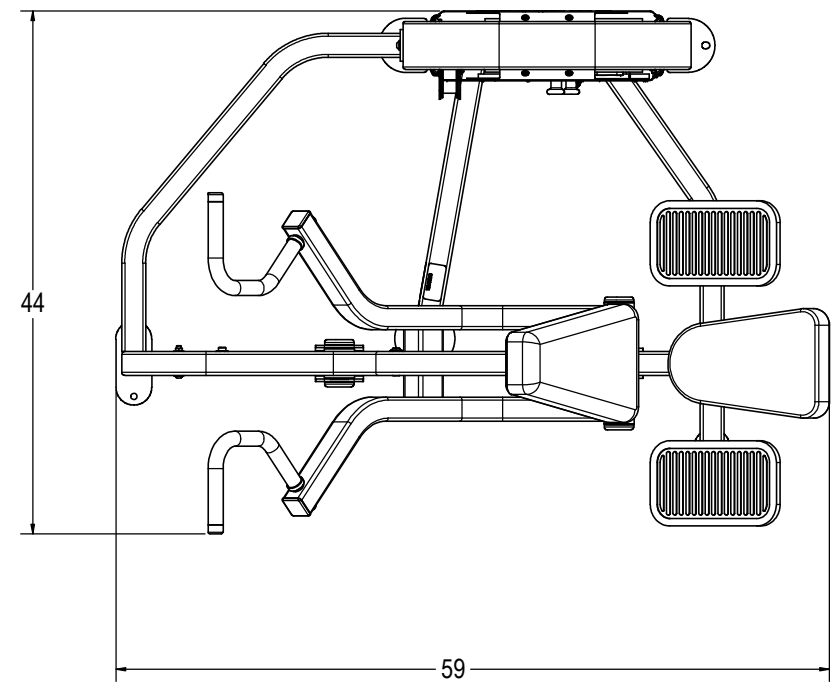


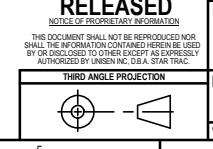
REVISION HISTORY				
REV	DATE	DESCRIPTION	ECO	BY
A	11/11/2009	PRODUCTION RELEASE	100596	SLS



ITEM NO.	PART NUMBER	DESCRIPTION	QTY.
1	3211-0153	ASSY, WELD, MAIN FRM, VERT, ROW	1
2	3211-0154	ASSY, WELD, HANDLE, VERT, ROW	1
3	3211-0231	ASSY, WELD, LEV. ARM, VERT, ROW	1
4	3211-0228	ASSY, WELD, LINEAR ROM ADJ., OUTER	1
5	3210-0157	ASSY, WELD, SEAT POST	1
6	4900-PNTX	POWDER COAT, TBD	2.0 LBS.
7	3311-0386	ASSY, MECH, WT FRAME, S3301E LL	1
8	3500-0025	ASSY, UPHOLSTRY, 13 7/8 X 8 7/8, FC-202-C	1
9	3500-0076	ASSY, UPHOLSTRY, 18 1/8 X 3/4, FB-305-A	1
10	4900-LPHX	UPHOLSTERY, TBD	0.75 LIN. YDS.
11	1400-0001	TUBE, ROUND, 1", RUBBER, BLK	35.38 IN.
12	2120-0154	PLATE, BELT CLAMP, 1/4, BC-002	1
13	2120-0502	PLATE, BELT CLAMP, 1/4, BC-003	1
14	2120-3826	CAP, BEARING 2 1/2 RND ALUM	4
15	2120-3848	RING, HANDLE, 1"	2
16	2120-4093	SHAFT, LEV. ARM	1
17	2120-4094	SHAFT, HANDLE ARM	1
18	2130-0066	COVER, PULLEY, 5"	1
19	2210-0009	BUSHING, SEAT POST	1
20	2400-0050	PAD, FOOT, RUBBER, MED.	2
21	3211-0227	ASSY, WELD, LINEAR ROM ADJ., INNER	1
22	3290-0001	ASSY, WELDMENT, HANDLE	1
23	4210-0030	FHSCS, 3/8-16 X .875, BRIGHT, Z	4
24	4220-0005	SHCS, 1/4-20 X 1.0	4
25	4230-0048	BHSCS, 5/16-18 X 1, BRIGHT, Z	8
26	4230-0051	BHSCS, 3/8-16 X 2 1/2, BRIGHT, Z	1
27	4230-0059	BHSCS, 3/8-16 X 4 1/4, BRIGHT, Z	3
28	4230-0060	BHSCS, 3/8-16 X 2 3/4, BRIGHT, Z	2
29	4230-0069	BHSCS, 1/4-20 X 1 3/4, BRIGHT, Z	1
30	4230-0076	BHSCS, 1/2-13 X 4 3/4, BRIGHT, Z	1
31	4230-0093	BHSCS, 1/4-20 X 3/4, BRIGHT, Z	1
32	4230-0106	BHC, 5/8-11, 2.0, SHC, AS, BZ	2
33	4250-0001	SSS, 10-32 X 1/8, BLK	8
34	4250-0015	SSSCP, 1/4-20 X 1/2, BLK	2
35	4500-0001	NUT, HEX, JAM, 5/8-18, ZINC	1
36	4500-0004	NUT, NYLOC, 1/2-20	1
37	4500-0008	Nut, JAM, 1/4-20, Z	1
38	4500-0029	NUT, NYLOC, JAM, 3/8-16, Z	6
39	4500-0053	NUT, 5/8-11, NYLOC, NTE, AS, Z	2
40	4600-0007	WASHER, SAE, 5/16, Z	8
41	4600-0008	WASHER, SAE, 1/2, Z	2
42	4600-0009	WASHER, SAE, 3/8-16, Z	12
43	4600-0017	WASHER, SAE, FLAT, 5/8, Z	4
44	4600-0025	MACHINE BUSHING, 1", 18 GAGE	2
45	4600-0001	BELT, MECTROL, SPOOL	168
46	4900-0004	ROD END, 5/8-18	2
47	4900-0005	CAP, HANDLE, 1", CHROME	2
48	4900-0052	SPRING, O.D. 5.1, 1.5, CENTURY 921	1
49	4900-0108	SLEEVE, HANDLE, RED	1
50	4900-0139	BEARING, 1 ID X 2 OD, NR16-Z	4
51	4900-0241	Pull Pin, 3/8, K-100PR	1
52	4900-0440	PULLEY, BELT, 4.75D, 3/8B, 1.5W, MOLDED	1
53	4900-0441	PULLEY, BELT, 4.75D, 1/2B, 1.5W, MOLDED	1
54	4900-0588	CAP, 2.0 x 2.0, BLACK, TEXTURED	2
55	4900-0590	CAP, Ø1.0, BLACK, TEXTURED	2
56	5220-0002	LABEL, SAFETY, KEEP HANDS, SMALL	1
57	5220-0005	LABEL, SAFETY, SECURE TO FLOOR	1
58	5220-0028	LABEL, SAFETY, PINCH POINTS	2
59	5290-0001	SERIAL NUMBER	1
60	050-2190	LABEL, PATENTS, LNL	1
61	730-0913	BUMPER	1

- NOTES:
1. INTERPRET DRAWING PER ASME Y14.5M-1994.
  2. REMOVE ALL BURRS AND SHARP EDGES. 015/030.
  3. IF APPLICABLE, CRITICAL DIMENSIONS LABELED.
  4. ALL HARDWARE KITTED PER 3700-0483.
  5. ALL UPHOLSTERY KITTED PER 3700-0074.
  6. EST. GROSS WT. 585 LBS.

DOCUMENT STATUS:  
**RELEASED**



MATERIAL SEE BOM	UNISEN, INC. DBA <b>STAR TRAC</b> 14410 Myford Road Irvine CA 92606
FINISH N/A	DATE 10/22/2009
VENDOR N/A	SCALE 1:8
P/N N/A	SHEET 1 OF 2
	SHEET SIZE: D

