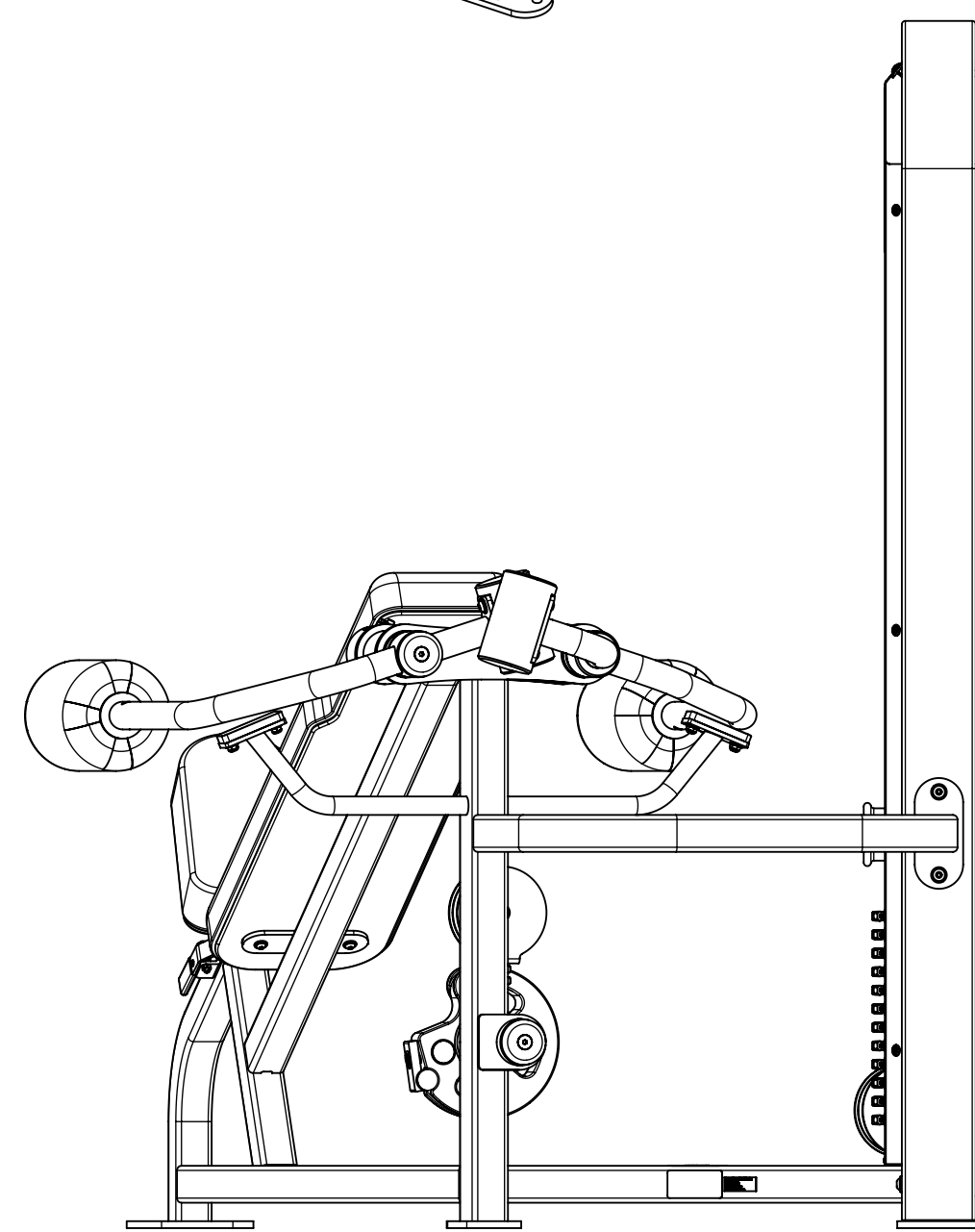
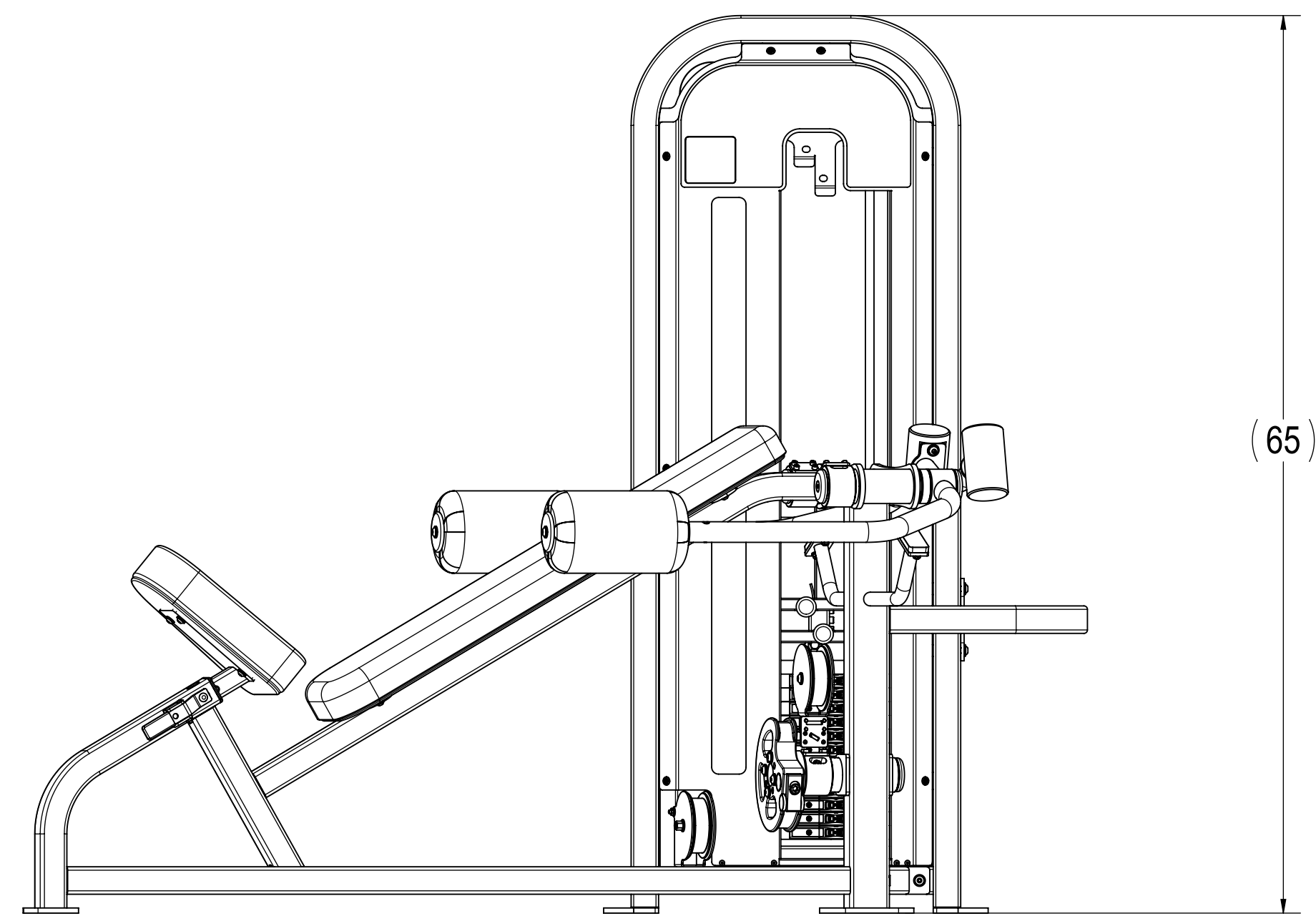
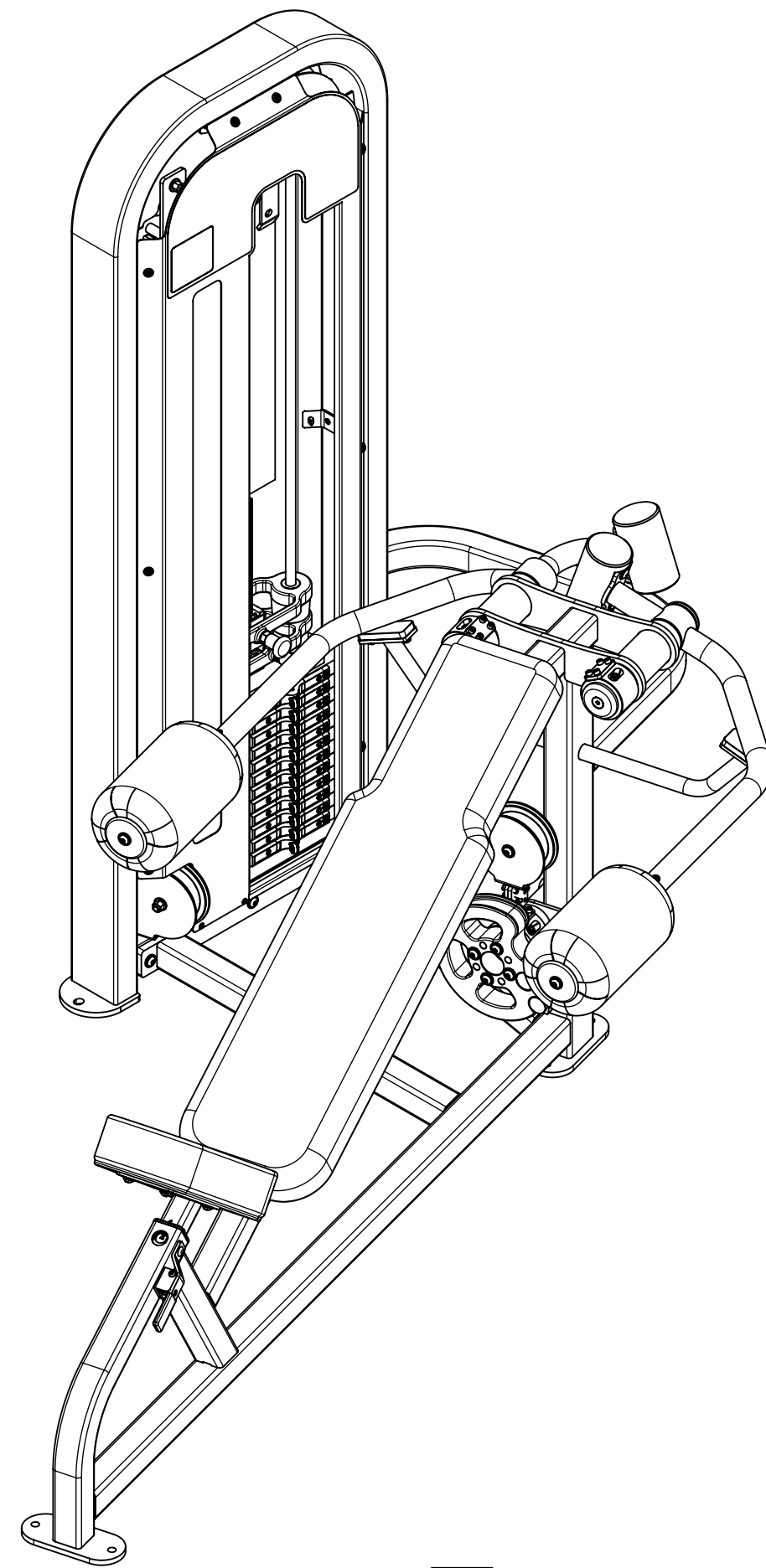
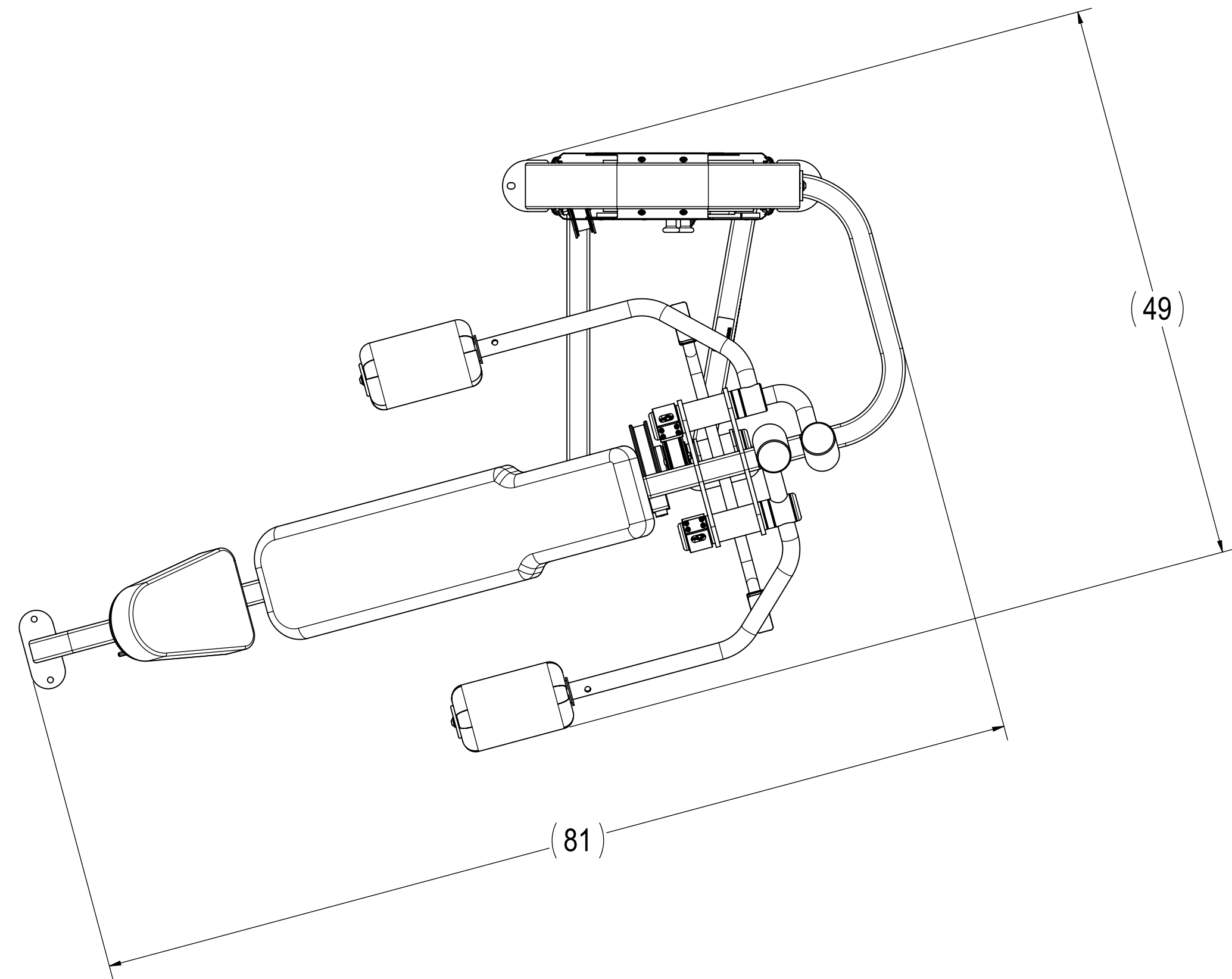


REVISION HISTORY				
REV	DATE	DESCRIPTION	ECO	BY
A	11/11/2009	PRODUCTION RELEASE	100596	SLS

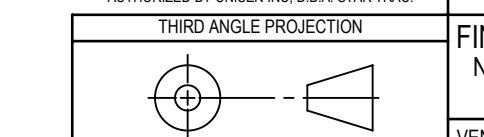


ITEM NO.	PART NUMBER	DESCRIPTION	QTY.
2	3210-0364	ASSY, WELD, SEAT POST, 15DEG	1
3	3211-0149	ASSY WELD, IN LINE PULLEY CONNECT	1
4	3211-0156	ASSY WELD, MAIN FRAME, 30 DEG PEC FLY	1
5	3211-0157	30 DEG PEC FLY ARM 2	1
6	3211-0158	30 DEG PEC FLY ARM 1	1
8	4900-PNTX	POWDER COAT TBD	2.0
73	3311-0385	ASSY,MECH,WT FRAME,S2303E LL	1
10	3500-0021	ASSY,UP,,ROLLER PAD,5.7ODX10LG	2
11	3500-0025	ASSY,UPHOLSTRY,13 7/8 X 8 7/8,FC-202-C	1
12	3500-0069	ASSY, UPHOLSTRY, 10x34, FS-403-A	1
13	4900-UPHX	UPHOLSTERY TBD	1.75
14	2120-0112	CAM, BELT, 3", BLT-CAM.001	3
15	2120-0154	PLATE, BELT CLAMP, 1/4, BC-002	4
17	2120-3826	CAP, BEARING 2 1/2 RND ALUM	4
18	2120-3939	BAR, MACH, 2.5" WELD SPACER	2
19	2120-4029	BAR, 3" OD CBALANCE	2
71	2210-0009	BUSHING, SEAT POST	1
25	3211-0211	ASSY, WELD, CAM PIVOT AXLE	1
27	3290-0001	ASSY, WELDMENT, HANDLE	1
29	4210-0030	FHSCS, 3/8-16 X .875, BRIGHT, Z	4
30	4220-0004	SHCS, 1.4-20 X 3/4L	16
31	4220-0025	SHCS, 1/2-20 X 1.75 L, Z	1
32	4220-0030	SHCS, 3/8-16 X 1.25, Z	3
34	4230-0050	BHSCS, 3/8-16 X 1, BRIGHT, Z	2
36	4230-0057	BHSCS, 3/8 X 2 1/4, BRIGHT, Z	5
37	4230-0059	BHSCS, 3/8-16 X 4 1/4, BRIGHT, Z	3
38	4230-0060	BHSCS, 3/8-16 X 2 3/4, BRIGHT, Z	2
39	4230-0066	BHSCS, 3/8-16 X 3/4, BRIGHT, Z	4
40	4230-0069	BHSCS, 1/4-20 X 1 3/4, BRIGHT, Z	1
41	4230-0085	BHSCS, 5/16-18 X 1 1/4, BRIGHT, Z	8
42	4230-0093	BHSCS, 1/4-20 X 3/4, BRIGHT, Z	1
43	4500-0008	Nut, JAM, 1/4-20,Z	1
44	4500-0016	NUT, NYLOC, 5/16-18, NE, Z	4
45	4500-0029	NUT,NYLOC,JAM,3/8-16,Z	6
48	4600-0007	WASHER, SAE, 5/16, Z	12
49	4600-0009	WASHER,SAE,3/8-16,Z	22
48	4600-0025	MACHINE BUSHING, 1", 18 GAGE	5
51	4600-0027	WASHER, NYLON, 2 OD, 1 1/16 ID, 3/16	2
52	4800-0001	BELT, MECTROL, SPOOL	199
53	4900-0001	STOP, RED	2
54	4900-0052	SPRING,O.D .5L1.5, CENTURY 921	1
55	4900-0056	PIN,PULL,CAM,BELT	1
56	4900-0057	CAM,PIN,CLAMP CABLE	1
57	4900-0058	CLAMP,CAM,BELT	1
58	4900-0077	CAM, VRC - 11	1
59	4900-0108	SLEEVE, HANDLE, RED	1
60	4900-0139	BEARING, 1 ID X 2 OD, NR16-Z	6
61	4900-0440	PULLEY,BELT,4.75D,3/8B,1.5W,MOLDED	1
64	5220-0005	LABEL, SAFETY, SECURE TO FLOOR	1
74	5290-0001	SERIAL NUMBER	1
72	050-2190	LABEL,PATENTS,LNL	1
70	730-0200	PLASTIC, ROLLER WASHER	2

- NOTES:
1. INTERPRET DRAWING PER ASME Y14.5M-1994.
 2. REMOVE ALL BURRS AND SHARP EDGES .015/.030.
 3. IF APPLICABLE, CRITICAL DIMENSIONS LABELED.
 4. ALL HARDWARE TO BE KITTED PER 3700-0482.
 5. ALL UPHOLSTERY TO BE KITTED PER 3700-0357.
 6. EST. GRO WT. 462 LBS.
 7. BELT FROM TOP PLATE 72"
 8. BELT FROM WGT STACK TO CAM 73"
 9. BELT BETWEEN TWO ARMS 41"
 10. BELT FROM PULLEY TO CAM 13".

DOCUMENT STATUS:
RELEASED

NOTICE OF PROPRIETARY INFORMATION
THIS DOCUMENT SHALL NOT BE REPRODUCED NOR SHALL THE INFORMATION CONTAINED HEREIN BE USED BY OR DISCLOSED TO OTHERS EXCEPT AS EXPRESSLY AUTHORIZED BY UNISEN INC. U.S.A. STAR TRAC.



MATERIAL
SEE BOM

FINISH
N/A

VENDOR N/A

UNLESS OTHERWISE SPECIFIED DIMENSIONS ARE IN INCHES. TOLERANCES ARE:
DECIMALS
X . = ± .13
X .X = ± .05
X .XX = ± .03
X .XXX = ± .010

INITIAL DATE
SLS 10/27/2009

DRAWN
N/A

CHECKED
N/A

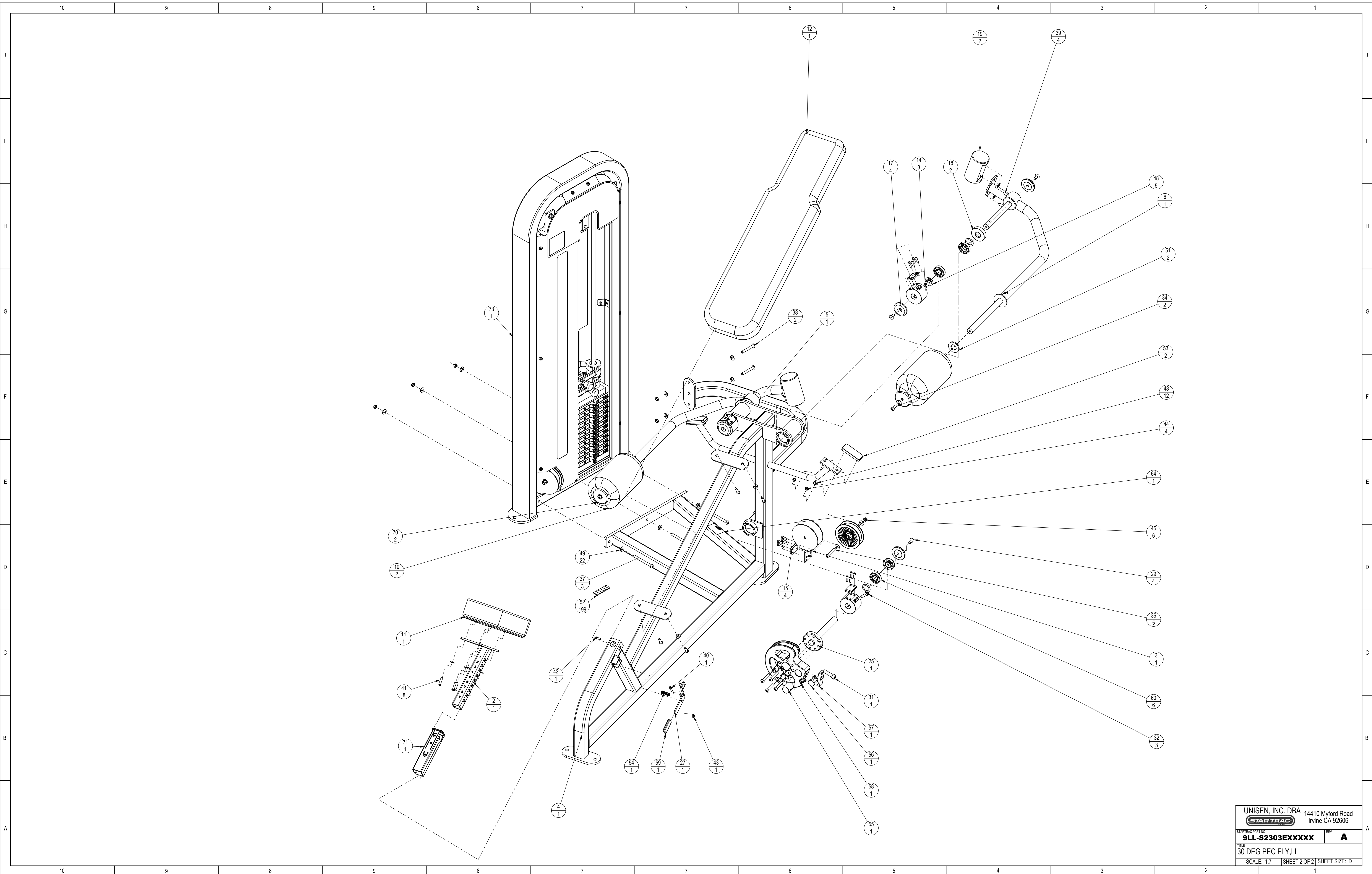
APPROVED
N/A

UNISEN, INC. DBA 14410 Myford Road
STAR TRAC Irvine CA 92606

STARTING PART NO. 911-S2303EXXXXXX REV A

TITLE 30 DEG PEC FLY,LL

SCALE: 1:10 SHEET 1 OF 2 SHEET SIZE: D



UNISEN, INC. DBA		14410 Myford Road	
STAR TRAC		Irvine CA 92606	
STARTING PART NO.	REV		
9LL-S2303EXXXXX	A		
TITLE			
30 DEG PEC FLY,LL			
SCALE: 1:7		SHEET 2 OF 2 SHEET SIZE: D	