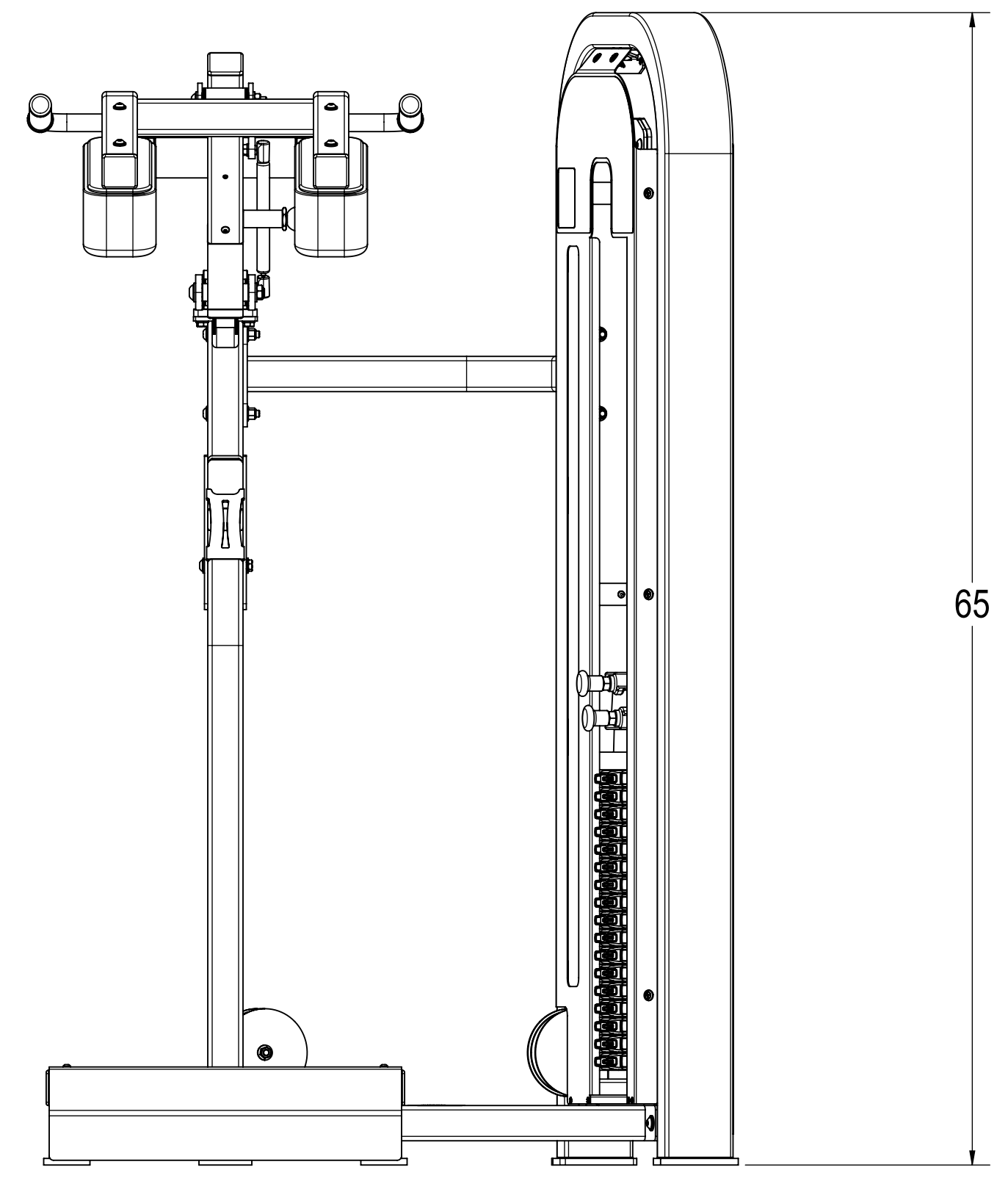
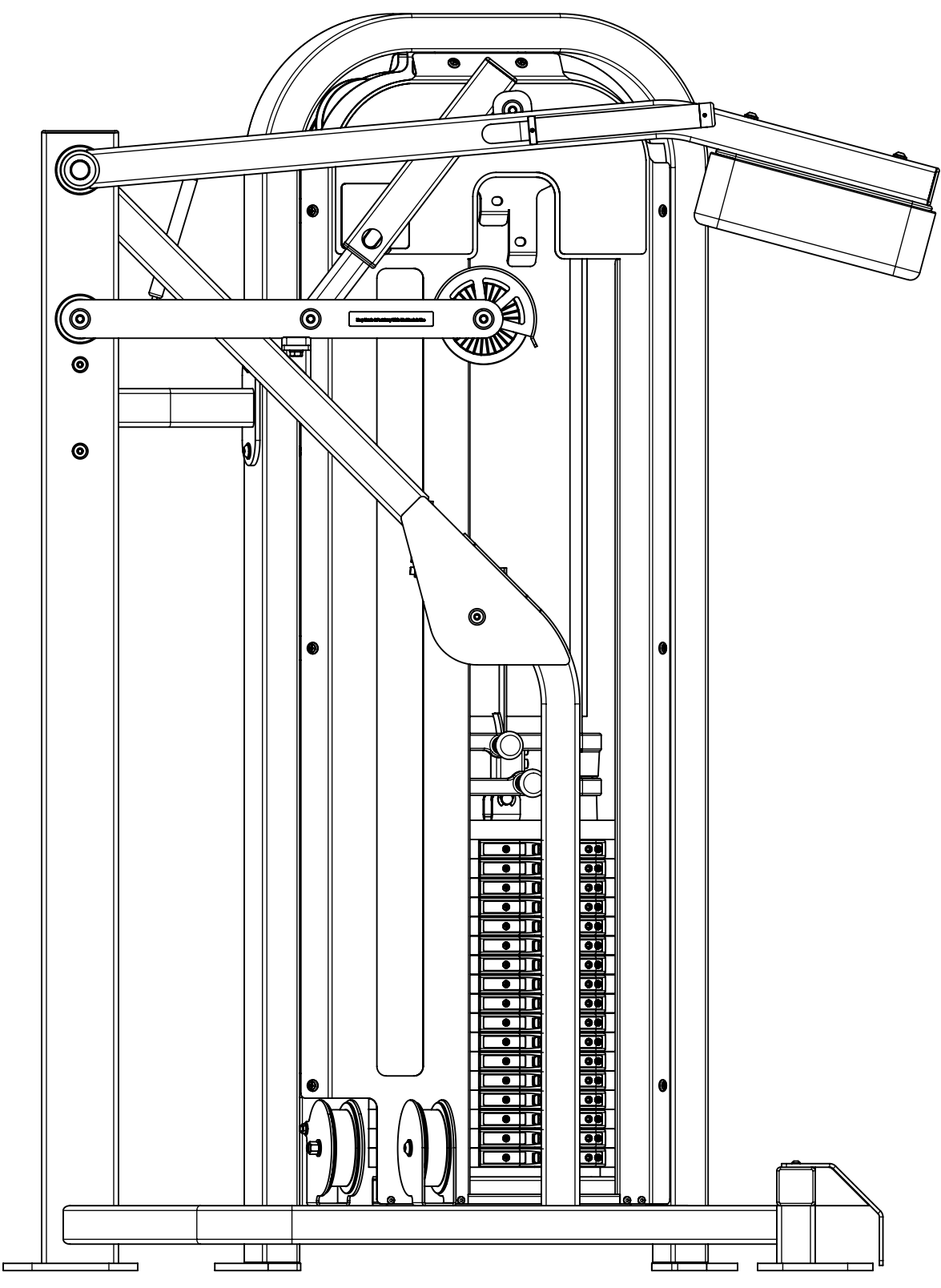
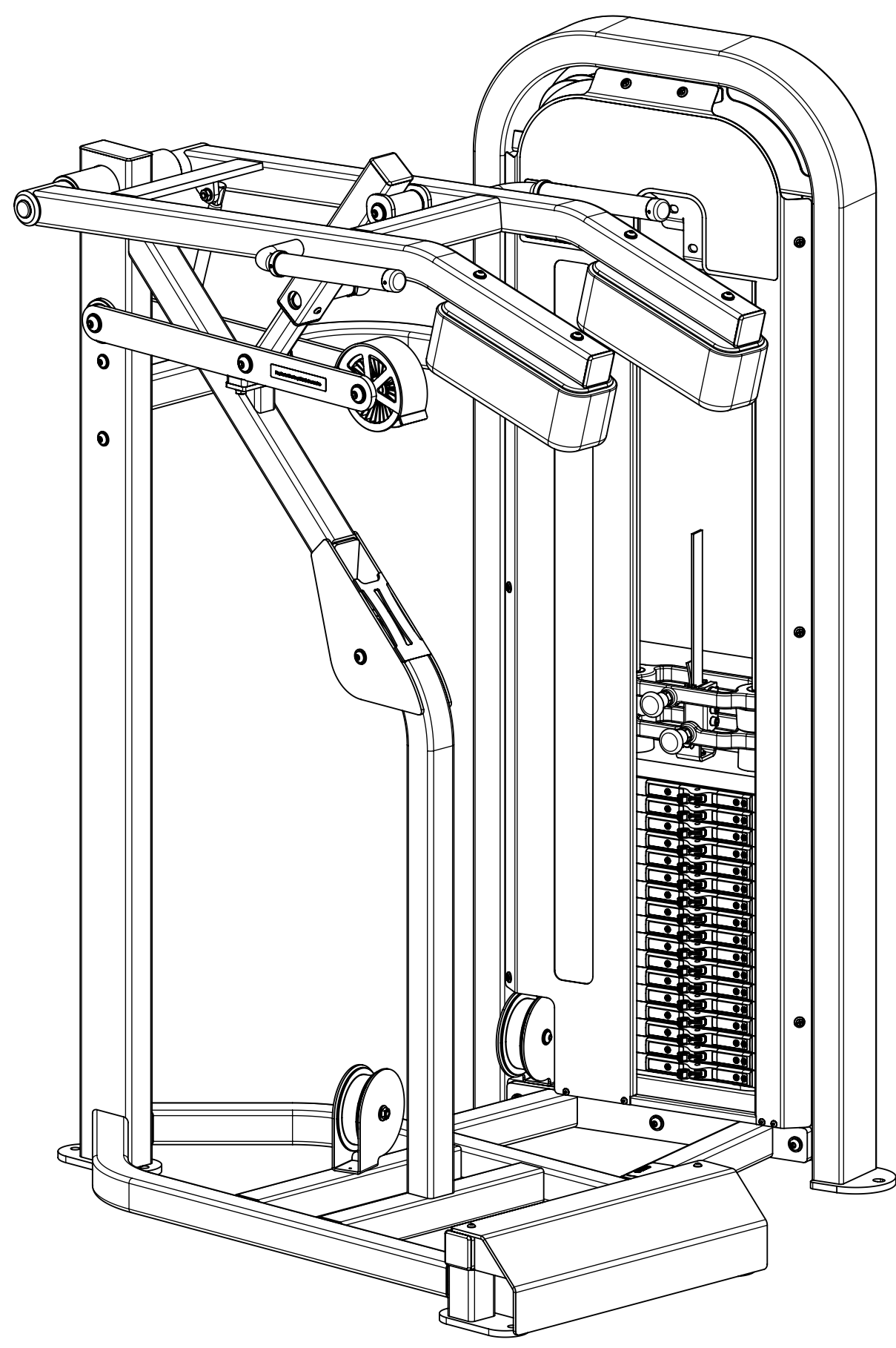
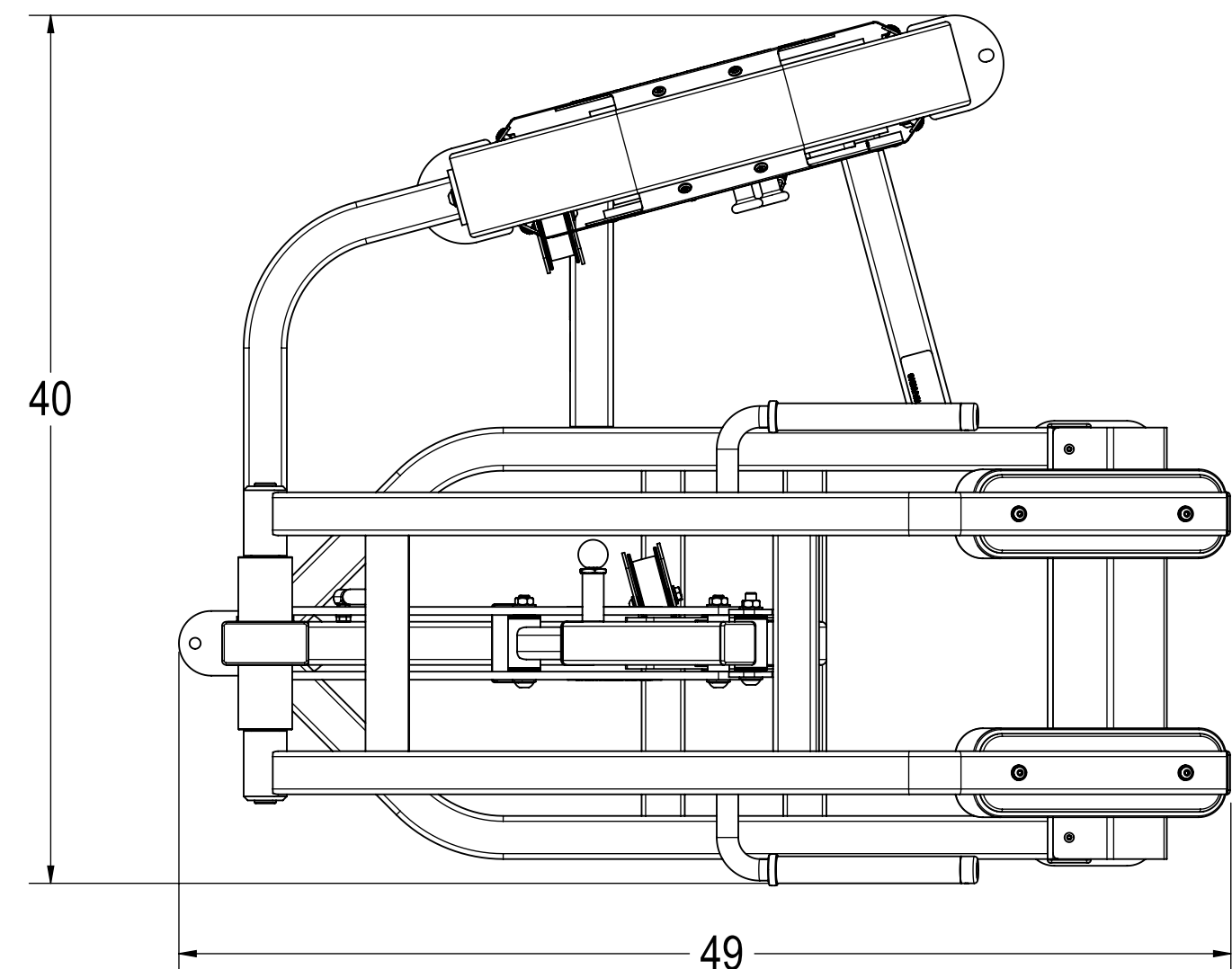


REVISIONS				
REV.	DATE	DESCRIPTION	ECO	BY
A	11/11/2009	PRODUCTION RELEASE	100596	SLS

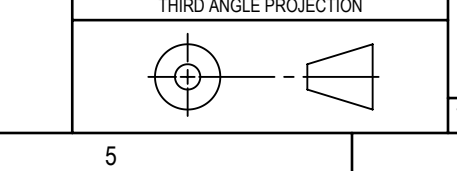


ITEM NO.	PART NUMBER	DESCRIPTION	QTY.
1	2164-0050	BAR, MACH, 3/8 X 2, 23, 4 HOLE	1
2	2164-0053	BAR, MACH, 3/8 X 2, 23, 3 HOLE	1
3	3211-0092	ASSY, WELD, LINKAGE TUBE, S1309	1
4	3211-0094	ASSY, WELD, ARMS, S1309	1
5	3211-0186	ASSY, WELD, CONNECTOR ARM, S1309	1
6	3211-0075	ASSY, WELD, MAIN FRAME, S1309	1
7	4900-PNTX	POWDER COAT, TBD	3.0
8	3311-0379	ASSY, MECH, WT FRAME, S1309E LL	1
9	3500-0055	ASSY, UPHOLSTERY, 12x4, FL-108-B	2
10	4900-UPHX	UPHOLSTERY, TBD	0.50
11	1400-0001	TUBE, GRIP, 1", BLK X 8 9/16"	18 IN
12	2120-0154	PLATE, BELT CLAMP, 1/4, BC-002	1
13	2120-0502	PLATE, BELT CLAMP, 1/4, BC-003	1
14	2120-0769	RACE, INNER, 1 X 2 5/8L	3
15	2120-3739	BAR, MACH, 1 RD. X 13 1/2, S1309	1
16	2120-3848	RING, HANDLE, 1"	2
17	2140-0324	PLATE, FOOT, 3/16 THK., S1309	1
18	2210-0009	BUSHING, SEAT POST	1
19	3211-0093	ASSY, WELD, LINKAGE	1
20	3211-0102	ASSY, WELD, PULLEY COVER, S1309	1
21	4220-0005	SHCS, 1/4-20 x 1.0	4
22	4230-0006	BHSCS, 250-20 X, .750 BO	3
23	4230-0056	BHSCS, 3/8 X 3, BRIGHT, Z	4
24	4230-0057	BHSCS, 3/8 X 2 1/4, BRIGHT, Z	1
25	4230-0059	BHSCS, 3/8-16 X 4 1/4, BRIGHT, Z	3
26	4230-0060	BHSCS, 3/8-16 X 2 3/4, BRIGHT, Z	1
27	4230-0072	BHSCS, 1/2-13 X 4, BRIGHT, Z	4
28	4230-0080	BHSCS, 5/16-18 X 2 3/4, BRIGHT, Z	4
29	4250-0001	SSS, 10-32 X 1/8, BLK	8
30	4250-0015	SSSCP, 1/4-20 X 1/2, BLK	2
31	4500-0002	NUT, NYLOC, 5/16-18	4
32	4500-0008	Nut, JAM, 1/4-20, Z	2
33	4500-0022	NUT, JAMNYLOC, 1/2-13, NTE	4
34	4500-0029	NUT, NYLOC, JAM, 3/8-16, Z	5
35	4500-0030	NUT, NYLOC, JAM, 3/8-16, THICK, Z	4
36	4600-0006	FLAT WASHER, 1/4 Z	2
37	4600-0007	WASHER, SAE, 5/16, Z	8
38	4600-0008	WASHER, SAE, 1/2, Z	8
39	4600-0009	WASHER, SAE, 3/8-16, Z	10
40	4600-0013	WASHER, SAE, 3/8, Z	8
41	4600-0025	MACHINE BUSHING, 1", 18 GAGE	2
42	4800-0001	BELT, MECTROL	214
43	4900-0001	STOP, RED	1
44	4900-0151	PULL PIN, 1/2", K320	1
45	4900-0005	CAP, HANDLE, 1", CHROME	2
46	4900-0037	BEARING, FLANGE, 1, 008 X 1.00H	4
47	4900-0588	CAP, 2.0 X 2.0, BLACK, TEXTURED	5
48	4900-0139	BEARING, 1 ID X 2 OD, NR16-Z	4
49	4900-0184	SHOCK, 120 lbs, 8.40C X 3.5S	1
50	4900-0417	CAP, BLACK, 2 X 4	1
51	4900-0440	PULLEY, BELT, 4.75D, 3/8B, 1.5W, MOLDED	1
52	4900-0441	PULLEY, BELT, 4.75D, 1/2B, 1.5W, MOLDED	1
53	4900-0445	PULLEY, BELT, 4.75D, 3/8B, 2.0W, MOLDED	1
54	4900-0540	BALL STUD, 10 mm X .75" LG, THD	2
55	4900-0590	CAP, Ø1.0, BLACK, TEXTURED	2
56	5220-0002	LABEL, SAFETY, KEEP HANDS, SMALL	2
57	5220-0005	LABEL, SAFETY, SECURE TO FLOOR	1
58	5240-0005	LABEL, INSTRUCTIONAL, 1-12 VERT STRIP	1
59	5290-0001	SERIAL NUMBER	1
60	050-2190	LABEL, PATENTS, LNL	1

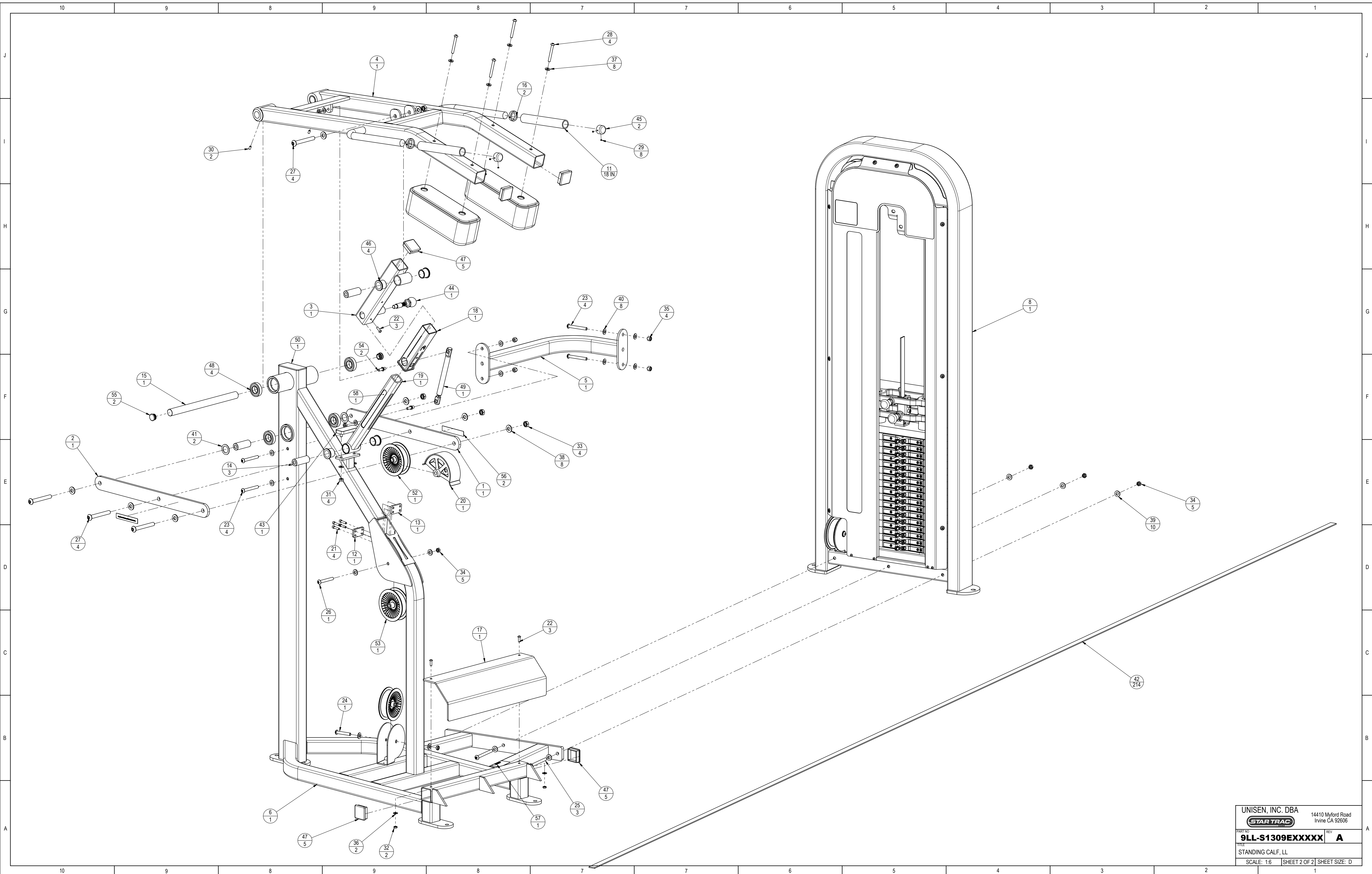
- NOTES:
1. INTERPRET DRAWING PER ASME Y14.5M-1994.
 2. REMOVE ALL BURRS AND SHARP EDGES .015/.030.
 3. IF APPLICABLE, CRITICAL DIMENSIONS LABELED.
 4. ALL HARDWARE TO BE KITTED PER 3700-0462.
 5. ALL UPHOLSTERY TO BE KITTED PER 3700-0089.
 6. EST. GROSS WEIGHT 615 LBS.

DOCUMENT STATUS:
RELEASED

UNLESS OTHERWISE SPECIFIED DIMENSIONS ARE IN INCHES. TOLERANCES ARE:
 DECIMALS: .X = ±.13 .XX = ±.10 .XXX = ±.03
 ANGLES: ° = ±.5' 15° = ±.5' 30° = ±.5'



MATERIAL SEE BOM	FINISH N/A	VENDOR	PIN	UNISEN, INC. DBA 14410 Myford Road Irvine CA 92606
START DATE 10/22/2009	DATE 10/22/2009	INITIAL SLS	DATE 10/22/2009	REV A
CHECKED	APPROVED	U.O.M. INCH	SCALE 1:8	SHEET 1 OF 2
DRAWN SLS		TITLE STANDING CALF, LL		SHEET SIZE: D



UNISEN, INC. DBA		14410 Myford Road	
STAR TRAC		Irvine CA 92606	
PART NO:	9LL-S1309EXXXXX	REV:	A
TITLE: STANDING CALF, LL			
SCALE: 1:6	SHEET 2 OF 2	SHEET SIZE: D	