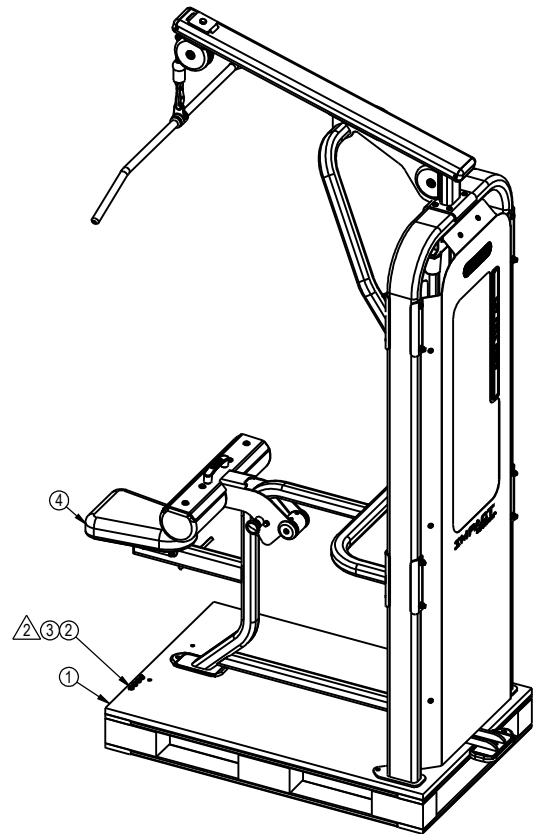


REVISION HISTORY				
REV	DATE	DESCRIPTION	ECO	BY
A	5/1/12	RELEASED @ LAND AMERICA	13683	KEY



ITEM NO.	PART NUMBER	DESCRIPTION	QTY.
1	731-0178	PALLET, 765 x 1180 x 152	1
2	731-0256	SCREW, M6, 25mm, W, HE, ZP	4
3	731-0294	WASHER, M8, NYLON	4
4	LA-S3305-XXXXS	SSS, LAT PULL DOWN	1

NOTICE OF PROPRIETARY INFORMATION
 THIS DOCUMENT SHALL NOT BE REPRODUCED NOR SHALL THE INFORMATION CONTAINED HEREIN BE USED BY OR DISCLOSED TO OTHER EXCEPT AS EXPRESSLY AUTHORIZED BY CORE INDUSTRIES, INC., D.B.A. STAR TRAC.

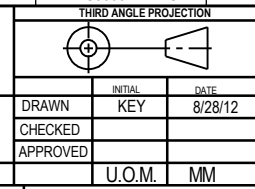
**DOCUMENT STATUS:
DEVELOPMENT**

CLASS OF WORK	UNLESS OTHERWISE SPECIFIED DIMS ARE IN mm. TOLERANCES FOR MEASURE OF LENGTH ARE:							ANGLES = ±2°		
	0.5 to 3	> 3 to 6	> 6 to 30	> 30 to 120	> 120 to 400	> 400 to 1000	> 1000 to 2000	> 2000		
FINE	±0.05	±0.05	±0.1	±0.15	±0.2	±0.3	±0.5	----		
MEDIUM	±0.1	±0.1	±0.2	±0.3	±0.5	±0.8	±1.2	±2		
COARSE	±0.2	±0.3	±0.5	±0.8	±1.2	±2	±3	±4		
VERY COARSE	----	±0.5	±1	±1.5	±2.5	±4	±6	±8		

MATERIAL
SEE BOM

FINISH
N/A

VENDOR: N/A P/N: N/A



CORE INDUSTRIES, INC. DBA
 14410 Myford Road
 Irvine CA 92606

STARTRAC PART NO. **9LA-S3305-XXXXS** REV **002**

TITLE: **LA,SSS,LAT PULL DOWN**

SCALE: 1:25 SHEET 1 OF 1 SHEET SIZE: B

- NOTES:
- PLACE SHIPPING LABELS ON PACKAGED UNIT BEFORE SHRINK WRAPPING.
 - USE ITEMS 2,3 TO SECURE ITEM 4 TO PALLET (ITEM 1), PLACING ITEM 3 AGAINST POWDERCOAT OF ITEM 4.
 - ITEM 4 NOT SHOWN IN PACKAGED CONFIGURATION.

Grid coordinates: 9 8 7 6 5 4 3 2 1 (horizontal); J I H G F E D C B A (vertical)