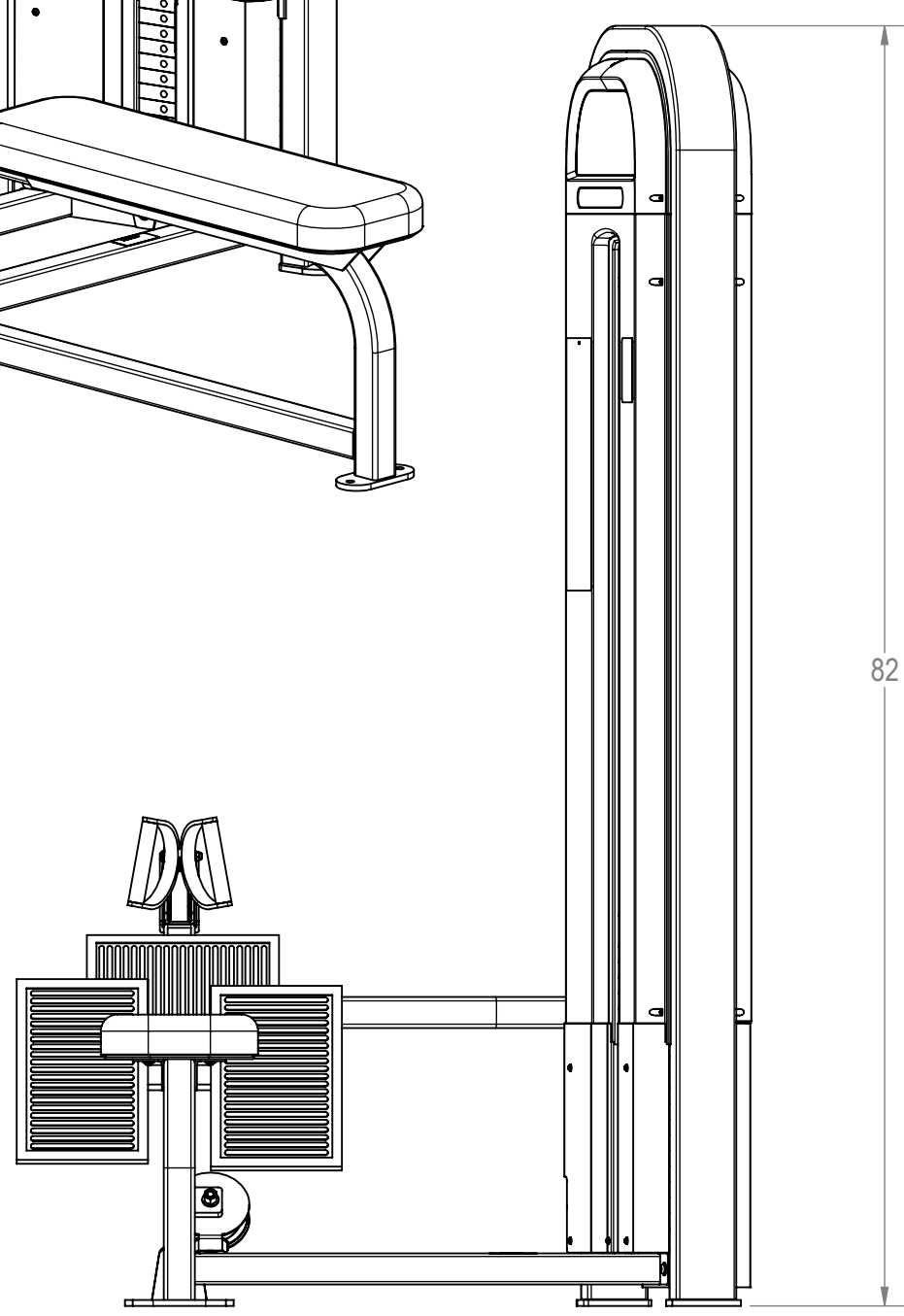
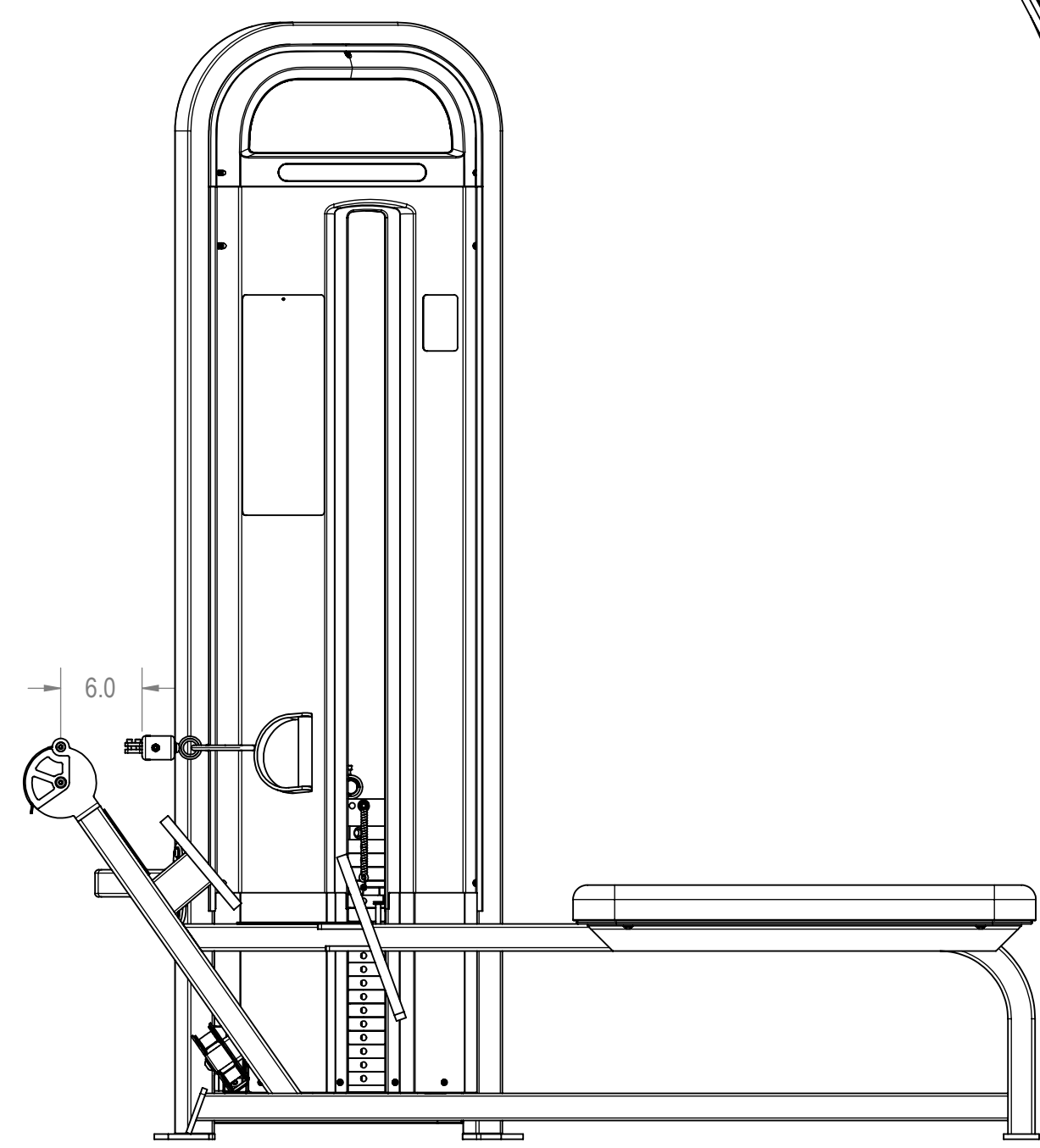
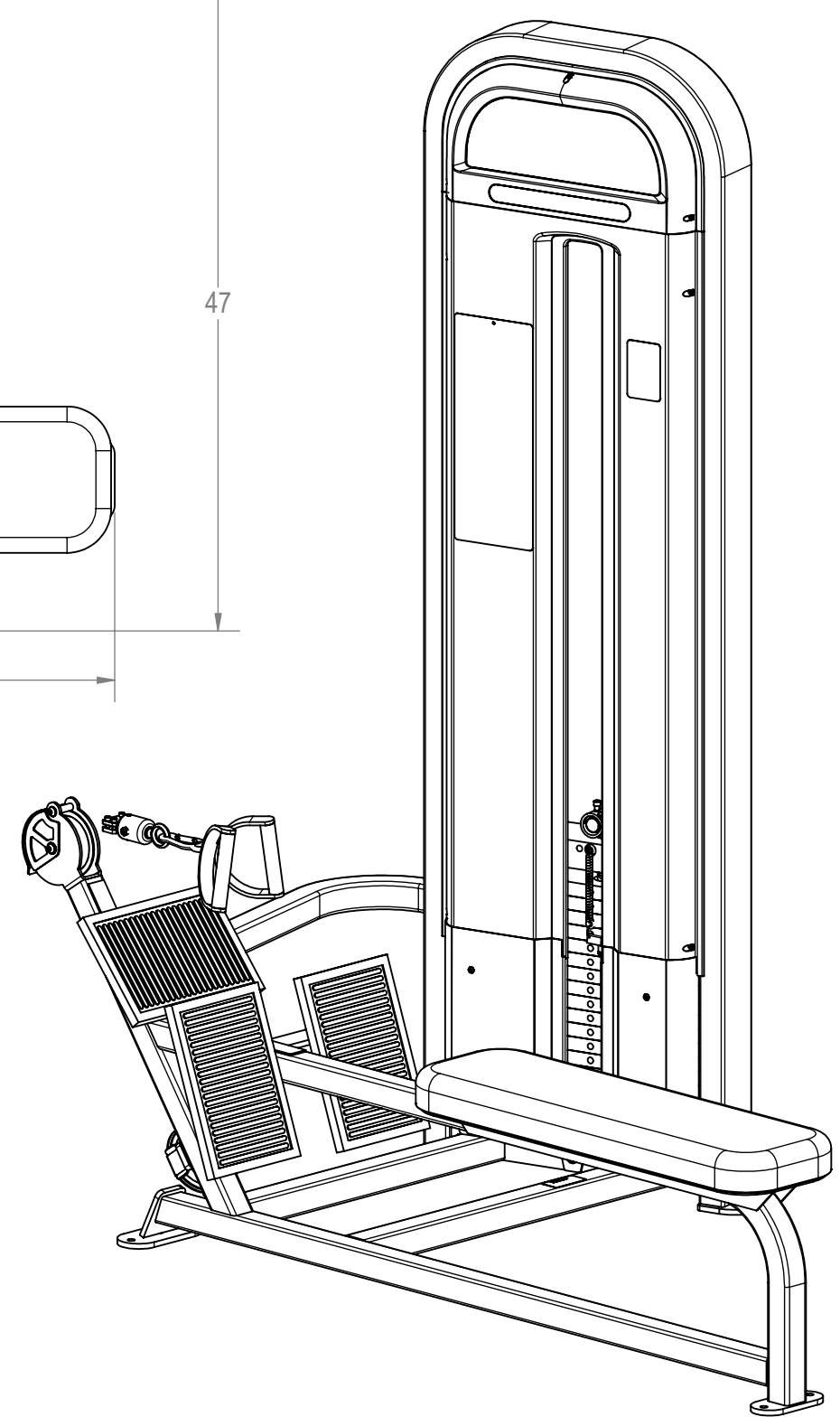
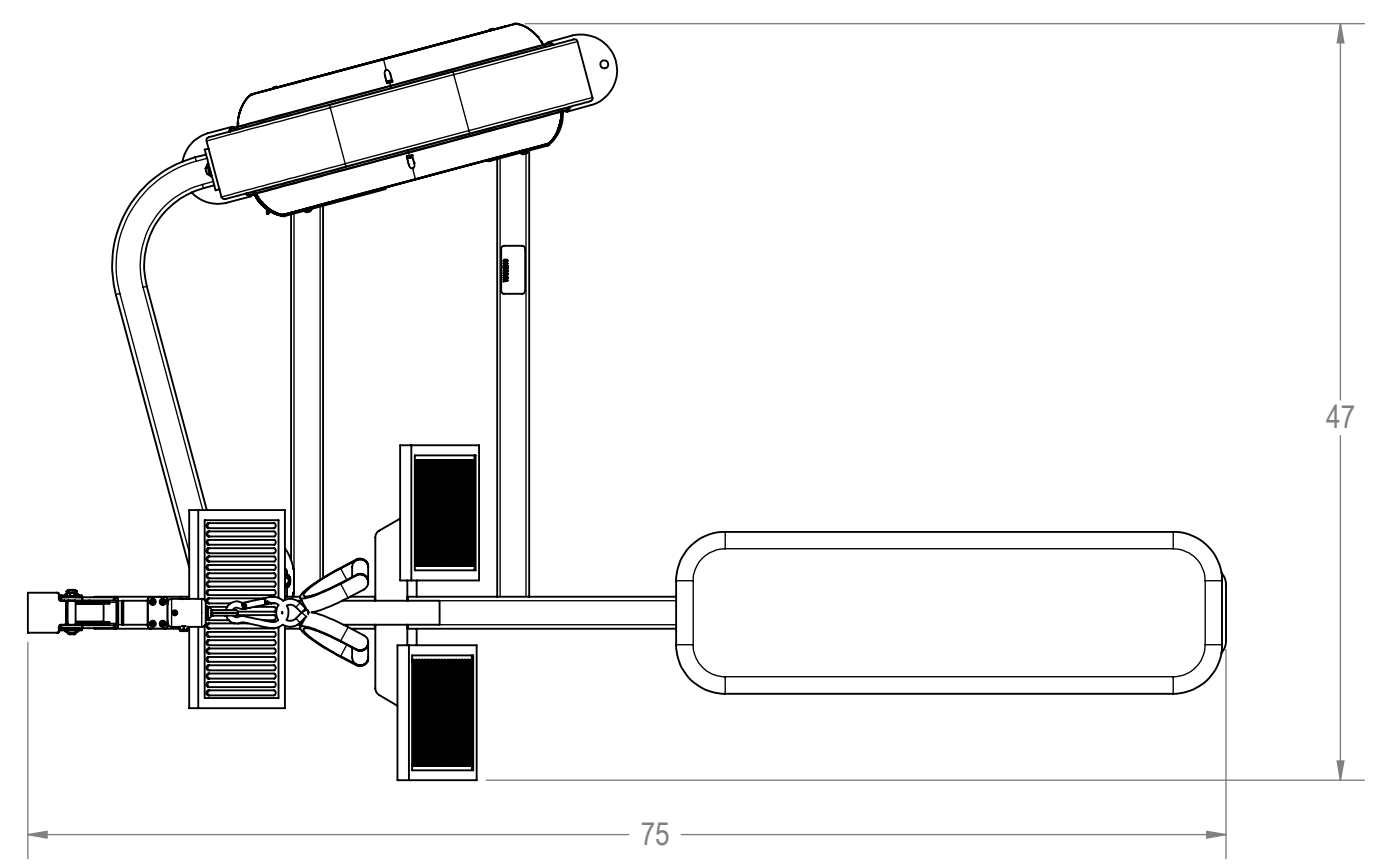


REVISIONS				
REV.	DATE	DESCRIPTION	ECO	BY
A	2/18/2008	RELEASE FOR PRODUCTION	100133	SLS
B	9/9/2008	REPLACED 3400-0032 WITH 2400-0052	100298	DMS
C	9/20/2008	REPLACED 4200-0005 WITH 4220-0004	100313	DMS
D	9/30/2008	REPLACED ONE 4900-0440 WITH 4900-0562	100323	DMS
E	3/11/2009	REPLACED 3310-0153 WITH 3310-0179	100435	PCH



ITEM NO.	PART NUMBER	DESCRIPTION	QTY.
1	3211-0043	ASSY, WELD, MAIN FRAME, LOW ROW	1
2	3211-0042	ASSY, WELD, WGT- FRAME, PR-S3306	1
3	3211-0198	ASSY, WELD, X-TALL KICK PLATE, FR RH	1
4	3211-0199	ASSY, WELD, X-TALL KICK PLATE, FR LH, L.R.	1
5	2130-0073	KICK PLATE, 82" WT. STACK	1
6	2140-0371	BKT., FRONT KICK PLATES	1
7	2140-0385	BKT., EXTRA TALL KICK PLATE	3
8	2140-0386	BKT., EXTRA TALL KICK PLATE, O.S.	1
9	4900-PNTX	POWDER COAT, TBD	1.75 LBS.

ITEM NO.	PART NUMBER	DESCRIPTION	QTY.
10	3500-0123	ASSY, UPHOLSTRY, SEAT	1

ITEM NO.	PART NUMBER	DESCRIPTION	QTY.
11	4900-UPHX	UPHOLSTRY, TBD	0.5 LIN. YDS.
12	2120-0154	PLATE, BELT CLAMP, 1/4, BC-002	1

ITEM NO.	PART NUMBER	DESCRIPTION	QTY.
13	2120-0502	PLATE, BELT CLAMP, 1/4, BC-003	1
14	2120-3402	Ø5/16 ID X 1 1/2 HOLLOW ROD	1
15	2120-3674	SHRD,MOD FRONT,LOW ROW,PR-S3306	1
16	2130-0066	COVER,PULLEY,5"	2
17	2210-0001	SHROUD,UPPER,PRO	2
18	2210-0004	SHROUD,LOWER,LONG,OUTSIDE,PRO	1
19	2400-0028	PAD, FOOT, RUBBER, U-0105.6	3
20	2400-0051	GUARD, RUBBER, LOWER, M.F.	1
21	3210-0353	ASSY,WELD,DUAL HANDLES	1
22	3211-0089	ASSY, WELD, PULLEY COVER, S3306	1
23	3310-0054	ASSY, MACH, BELT SWIVEL	1
24	4161-0074	SCREW, #8-18x1-1/2,PHT-AB,PH,CS	14
25	4230-0048	BHSCS, 5/16-18 X 1, BRIGHT, Z	4
26	4230-0049	BHSCS, 5/16-18	1
27	4230-0051	BHSCS, 3/8-16 X 2 1/2, BRIGHT, Z	4
28	4230-0059	BHSCS, 3/8-16 X 4 1/4, BRIGHT, Z	3
29	4230-0071	BHSCS 1/2-13 X 3, BRIGHT, Z	1
30	4230-0060	BHSCS, 3/8-16 X 2 3/4, BRIGHT, Z	2
31	4230-0068	BHSCS, 1/4-20 X 1/2, BRIGHT, Z	10
32	4500-0012	NUT, HEX, JAM, 1/2-13, Z	1
33	4500-0016	NUT, NYLOC, 5/16-18, NE, Z	1
34	4500-0029	NUT,NYLOC,JAM,3/8-16,Z	9
35	4500-0046	U-NUT, #8, PANEL, .025-.125	14
36	4500-0048	U-NUT,1/4-20,EDGE .531,.025-.150	10
37	4600-0001	WASHER, FLAT, 5/16	6
38	4600-0008	WASHER, SAE, 1/2, Z	2
39	4600-0009	WASHER,SAE,3/8-16,Z	6
40	4600-0017	WASHER, SAE, FLAT, 3/8, Z	13
41	4800-0002	BELT, SEIGLING, S3306	206 IN.
42	4900-0170	CLIP,CARABINEER,3/8 IN.,CLP	1
43	4900-0440	PULLEY,BELT,4.75D,3/8B,1.5W,MOLDED	3
44	4900-0441	PULLEY,BELT,4.75D,1/2B,1.5W,MOLDED	1
45	4900-0448	RIVET,3/16,.126-.250 GRIP,BLK,ALUM	8
46	5210-0087	PLAC,IMPACT,PR-S3306,LOW ROW	1
47	5220-0005	LABEL, SAFETY, SECURE TO FLOOR	1
48	5220-0023	LABEL,SAFETY,MAIN WARNING,IMPACT	1
49	5230-0008	LOGO,STAR TRAC,IMPACT,TOP SHROUD	2
50	5230-0009	LOGO,IMPACT,LOWER SHROUD	1
51	5230-0028	LABEL,NAME,ROW	2
52	2400-0052	GUARD, RUBBER, UPPER, M.F.	1
53	4220-0004	SHCS, 1.4-20 x 3/4L	4
54	4900-0562	PULLEY,BELT,3.75D,3/8b,1.5W,MOLDED	1
55	3310-0179	ASSY,W-STK,30LB/300LBS,BELT,X-TALL,MS	1

- NOTES:
1. INTERPRET DRAWING PER ASME Y14.5M-1994.
 2. REMOVE ALL BURRS AND SHARP EDGES .015/.030.
 3. IF APPLICABLE, CRITICAL DIMENSIONS LABELED.
 4. ALL HARDWARE IS KITTED PER 3700-0312.
 5. ALL UPHOLSTRY IS KITTED PER 3700-0241.
 6. EST. GROSS WT. 615 LBS.

DOCUMENT STATUS:
RELEASED

NOTICE OF PROPRIETARY INFORMATION
THIS DOCUMENT SHALL NOT BE REPRODUCED NOR SHALL THE INFORMATION CONTAINED HEREIN BE USED BY OR DISCLOSED TO OTHER EXCEPT AS EXPRESSLY AUTHORIZED BY UNISEN

MATERIAL	SEE BOM
FINISH	N/A
TOLERANCES UNLESS OTHERWISE SPECIFIED	X.XXX = ± .010 X.XX = ± .030 X.X = ± .050 X = ± .125
	ANGLES = ± 2° FRACTIONS = ± 1/32
DRAWN	SLS 2/18/2008
CHECKED	
APPROVED	
U.O.M.	INCH

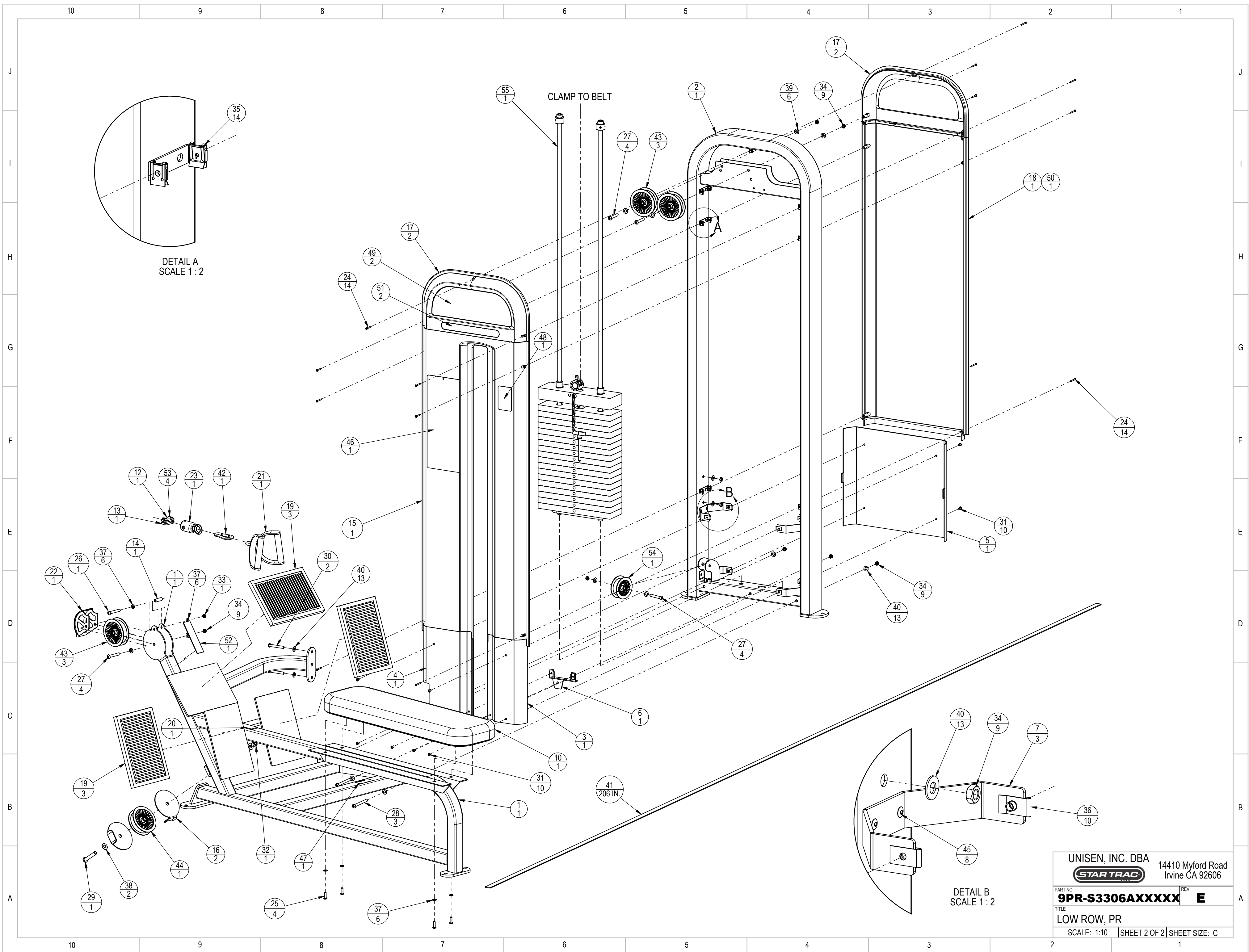
TOLERANCES UNLESS OTHERWISE SPECIFIED

UNISEN, INC. DBA **STAR TRAC** 14410 Myford Road
Irvine CA 92606

PART NO **9PR-S3306AXXXXX** REV **E**

TITLE **LOW ROW, PR**

SCALE: 1:12 | SHEET 1 OF 2 | SHEET SIZE: C



10 9 8 7 6 5 4 3 2 1

J
I
H
G
F
E
D
C
B
A

J
I
H
G
F
E
D
C
B
A

10 9 8 7 6 5 4 3 2 1