

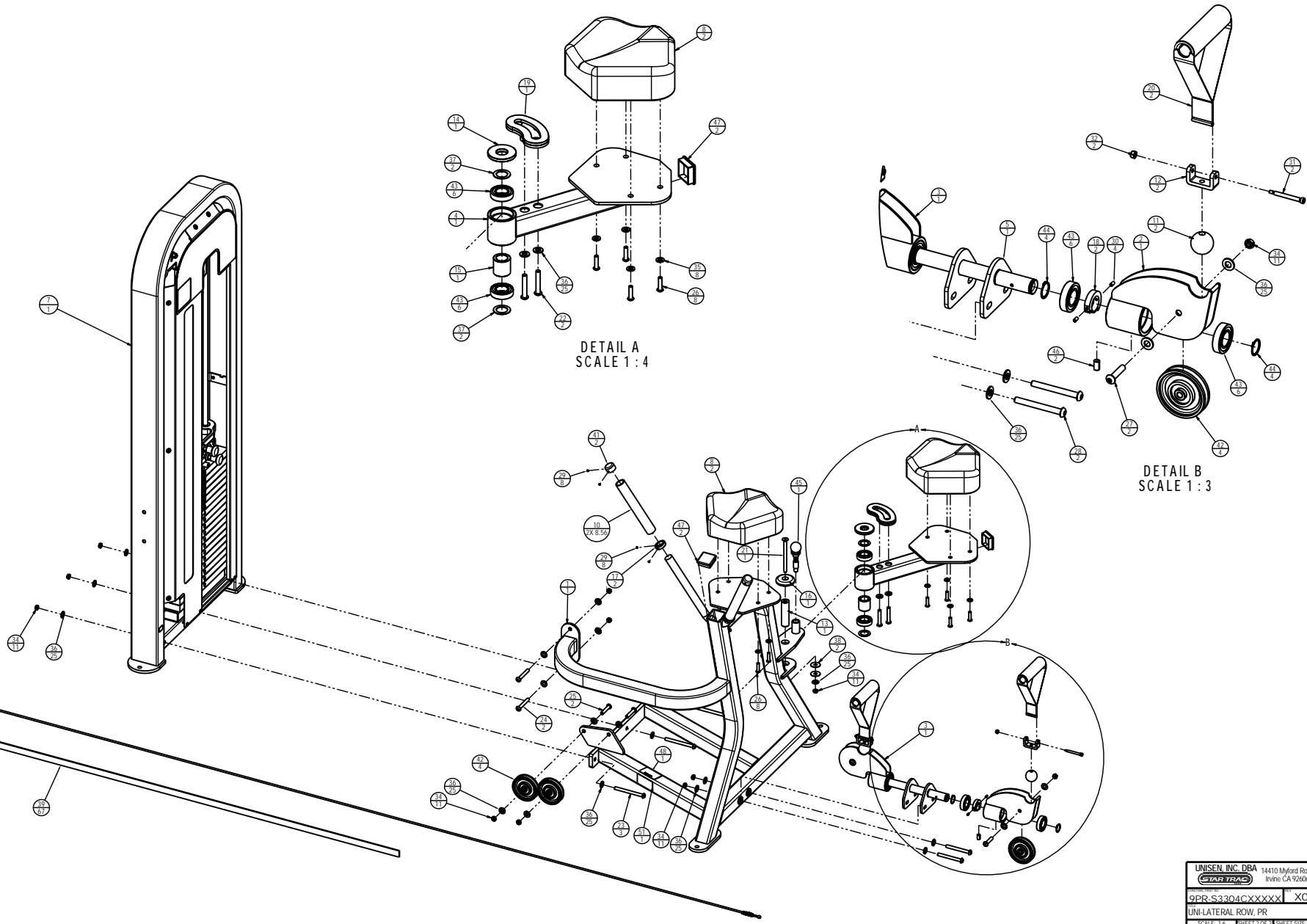
REVISIONS				
REV. NO.	DATE	DESCRIPTION	ECO	BY
1		RELEASE FOR PRODUCTION		DL

ITEM NO.	PART NUMBER	DESCRIPTION	QTY.
1	3211-0121	ASSY. WELD. MAIN FRAME, S3204	1
2	3210-0049	ASSY. WELD. PULLEY MT. LEFT	1
3	3211-0123	ASSY. WELD. PULLEY MT. LH	1
4	3211-0126	ASSY. WELD. ARM, KNEE PAD	1
5	3211-0122	ASSY. WELD. HANDLE PIVOT	1
6	4900-PNTX	POWDER COAT, TBD	1.75 LBS
7	3311-0287	ASSY. MECH. WT. FRAME, S3304 PR	1
8	3500-0125	ASSY. UPH. ADJUSTEE. PAD, S3304	2
9	4900-UPHX	UPHOLSTERY, TBD	1.1LN. YD.
10	1400-0001	TUBE, GRP. 1", BLK X 8.914"	17.13.86
11	2120-0258	BALL, BLACK, 1.5 X .391"	2
12	2120-3004	TUBE, MCHT. 2 X 2 X .75	2
13	2120-3820	RACE, KNEE PAD ARM	1
14	2120-3824	SPACER, KNEE ARM, LG.	1
15	2120-3825	SPACER, KNEE ARM, SHOR.	1
16	2120-3826	CAP. BEARING, 2 1/2 BND ALUM.	1
17	2120-3848	RING, HANDLE, 1"	2
18	2104-0083	STOP, UN/LAT. HANDLE	2
19	3211-0125	ASSY. WELD. ROM. UN/LAT.	1
20	3311-0047	ASSY. HANDLE, UN-LAT.	2
21	4230-0032	BHSCS, 3/8-16 X 3, BRIGHT, Z	1
22	4230-0067	BHSCS, 3/8 X 2 1/4, BRIGHT, Z	2
23	4230-0059	BHSCS, 3/8-16 X 1 1/4, BRIGHT, Z	3
24	4230-0060	BHSCS, 3/8-16 X 2 3/4, BRIGHT, Z	2
25	4230-0073	BHSCS, 3/8-16 X 2, BRIGHT, Z	2
26	4230-0083	BHSCS, 3/16-18 X 1 1/4, BRIGHT, Z	8
27	4230-0091	BHSCS, 3/8-16 X 1 3/4, BRIGHT, Z	2
28	4230-0092	BHSCS, 3/8-16 X 1 1/2, BRIGHT, Z	2
29	4250-0001	SSS, 10-32 X 1/8, BLK.	8
30	4250-0016	SSS, 10-32 X 3/8, BLK.	4
31	4300-0004	STRIP, 1/4 X 2.00	2
32	4500-0014	BAR, WIRE, 1/8" DIA., 8"	2
33	4500-0018	NUT, 3/8" NYLOC, 1/8" ST, Z	1
34	4500-0029	NUT, NYLOC, 1/8" X 3/8-16, Z	11
35	4600-0007	WASHER, SAF, 5/16, Z	8
36	4600-0009	WASHER, SAF, 3/8-16, Z	25
37	4600-0025	MACHINE BUSHING, 1" 18 GAUGE	2
38	4600-0042	WASHER, 1.25 OD X .406 ID X .042, ZINC	2
39	4600-0081	BEET, METRIC	67
40	4900-0053	CABLE, 1/8 X 3/16 CAR-135	1
41	4900-0005	CAP. HANDLE, 1" CHROME	2
42	4900-0047	PULLEY, CABLE, 3/50 X 3/8 X 1 1/2 W	4
43	4900-0139	BEARING, 1.0 X 1.00 X 1.0	4
44	4900-0140	RING, RETAIN, 1" EXT 5100-100	4
45	4900-0177	PULL PIN, 1/2", K-300	1
46	4900-0347	SPRING PIN, 3/8 X 5/8	2
47	4900-0588	CAP. 2 1/4 X 2 1/2, BLACK, TEXTURED	2
48	5220-0005	LABEL, SAFETY, SECURE TO FLOOR	1
49	5220-0028	LABEL, SAFETY, PINCH POINTS	1
50	5340-0002	LABEL, INSTR. ADJ. KNEE PAD	1
51	5290-0001	SERIAL NUMBER	1

NOTES:  
 1. INTERPRET DRAWING PER ASME Y14.5M-1994.  
 2. IF APPLICABLE, CRITICAL DIMENSIONS LABELED.  
 3. ALL HARDWARE IS KITTED PER 3700-0484.  
 4. ALL UPHOLSTERY IS KITTED PER 3700-0250.  
 5. EST. GROSS WT. 510 LBS.

DOCUMENT STATUS:  
**DEVELOPMENT**

MATERIAL SEE BOM	UNISEN INC. DBA 14410 Myford Road Irvine CA 92606
FINISH N/A	9PR-S-3304-CXXXXX X01
CHECKED	UN-LATERAL ROW, PR
APPROVED	SCALE: 1:8 SHEET 2 OF 2 SHEET SIZE: B



DETAIL A  
SCALE 1:4

DETAIL B  
SCALE 1:3