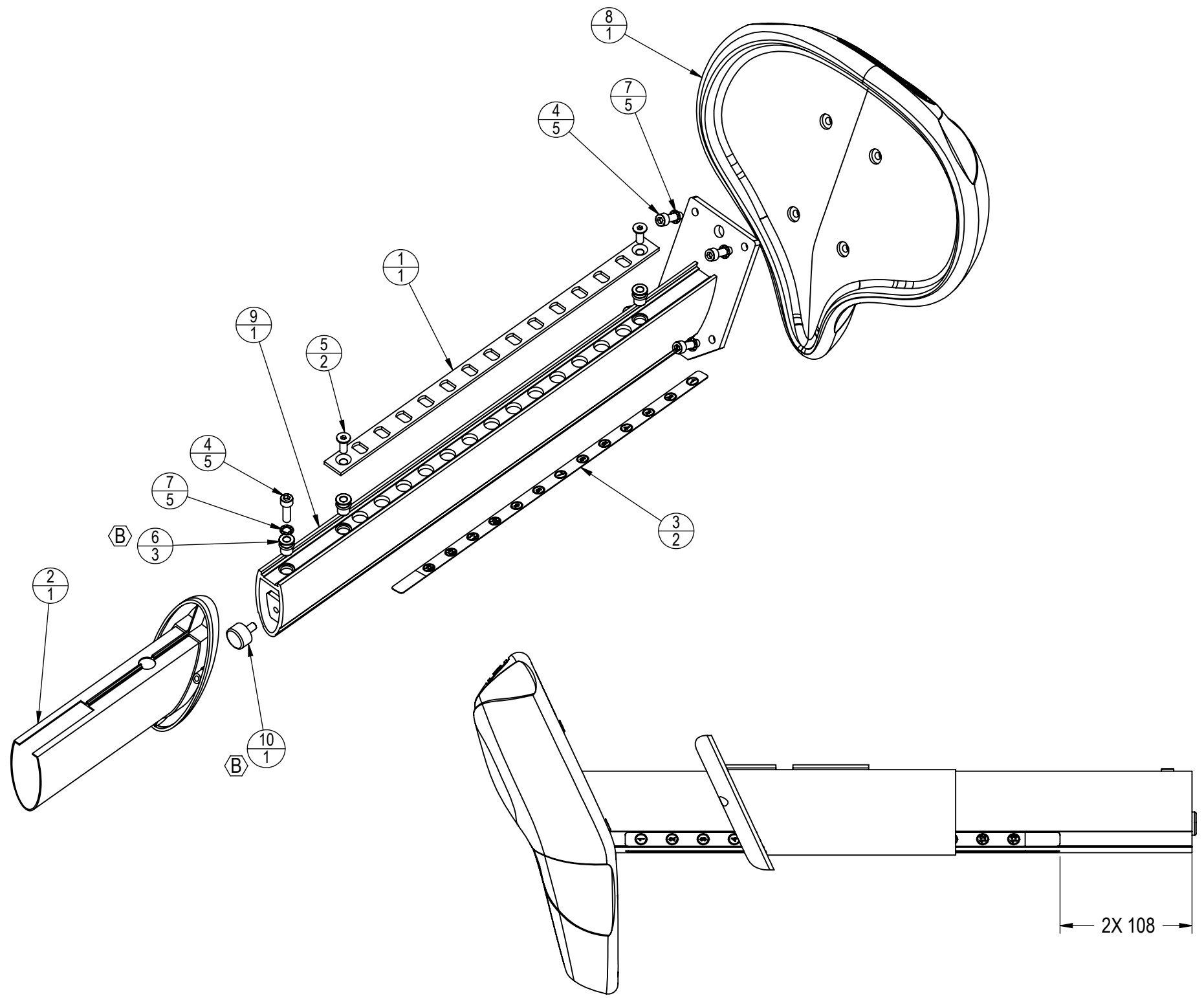


REVISION HISTORY				
REV	DATE	DESCRIPTION	ECO	BY
A	12/10/2003	PRODUCTION RELEASE	11066	VC
B	7/26/2011	REPLACE 140-3240 (1) FOR 740-7505 (1); ADD 110-3181 (3)	13339	SCN



ITEM NO.	PART NUMBER	DESCRIPTION	QTY.
1	020-6440	RACK, UPRIGHT SEAT	1
2	020-6451	SLEEVE, SEAT POST, UB	1
3	050-1860	STICKER, HEIGHT, UPRIGHT	2
4	110-3171	SCREW, ISO4762, M6x20	5
5	110-3172	SCREW, ISO10642, M6x16	2
(B) 6	110-3181	INSERT, M6, 610-4.2	3
7	120-3257	WASHER, M6, TEETH, 0.6 THICK	5
8	718-1099	SADDLE, UPRIGHT BIKE	1
9	718-1101	WELDMENT, SEAT POST	1
(B) 10	740-7505	BUMPER, 19mm X 11mm, M6, RUBBER	1

NOTES:

DOCUMENT STATUS:

NOTICE OF PROPRIETARY INFORMATION
 THIS DOCUMENT SHALL NOT BE REPRODUCED NOR SHALL THE INFORMATION CONTAINED HEREIN BE USED BY OR DISCLOSED TO OTHER EXCEPT AS EXPRESSLY AUTHORIZED BY CORE INDUSTRIES, INC., D.B.A. STAR TRAC.

CLASS OF WORK	UNLESS OTHERWISE SPECIFIED DIMS ARE IN mm. TOLERANCES FOR MEASURE OF LENGTH ARE:							ANGLES = ±2°
	0.5 to 3	> 3 to 6	> 6 to 30	> 30 to 120	> 120 to 400	> 400 to 1000	> 1000 to 2000	
FINE	±0.05	±0.05	±0.1	±0.15	±0.2	±0.3	±0.5	----
MEDIUM X	±0.1	±0.1	±0.2	±0.3	±0.5	±0.8	±1.2	±2
COARSE	±0.2	±0.3	±0.5	±0.8	±1.2	±2	±3	±4
VERY COARSE	----	±0.5	±1	±1.5	±2.5	±4	±6	±8

MATERIAL SEE BOM

FINISH

VENDOR: LAND AMERICA

P/N: E-UB-03E

THIRD ANGLE PROJECTION		
DRAWN	INITIAL FJM	DATE 1/15/2003
CHECKED		
APPROVED		

CORE INDUSTRIES, INC. DBA **STAR TRAC** 14410 Myford Road Irvine CA 92606

STARTRAC PART NO **718-1100** REV **B**

TITLE **ASSY, SEAT PORT, UB**

SCALE: 1:4 | SHEET 1 OF 1 | SHEET SIZE: B