

Relocating A Contact Heart Rate Board

SC5 and SM5

There has been some reports of corrosion on the contact heart rate board due to moisture. Repositioning the heart rate board will prevent this from occurring.

Tools Required

- Phillips screwdriver
- Cutting blade
- Towel or cloth

1. Remove the D1 console from the unit by removing the four large phillips screws that are located on the back side of the console mast.
2. Once the console has been removed, lay the console with the screen and key pad facing down on a flat service (Fig. 1)

Caution: Place the console face onto a towel or cloth to protect the screen and keypad.



Fig. 1

3. Remove the five small black phillips head screws that attach the back of the console to the front of the console. There are four screws located on the back of the console at each corner and one more screw that is between the top left and right screws (Fig. 2).



Fig. 2

4. Once all five screws are removed, carefully separate the back side of the console from the front side. Lay the two pieces on a flat surface with the keypad side on a towel or cloth (Fig. 3).



Fig. 3

5. With the inside of the console exposed, disconnect the two wire connections from each end of the contact heart rate board (Fig. 4).

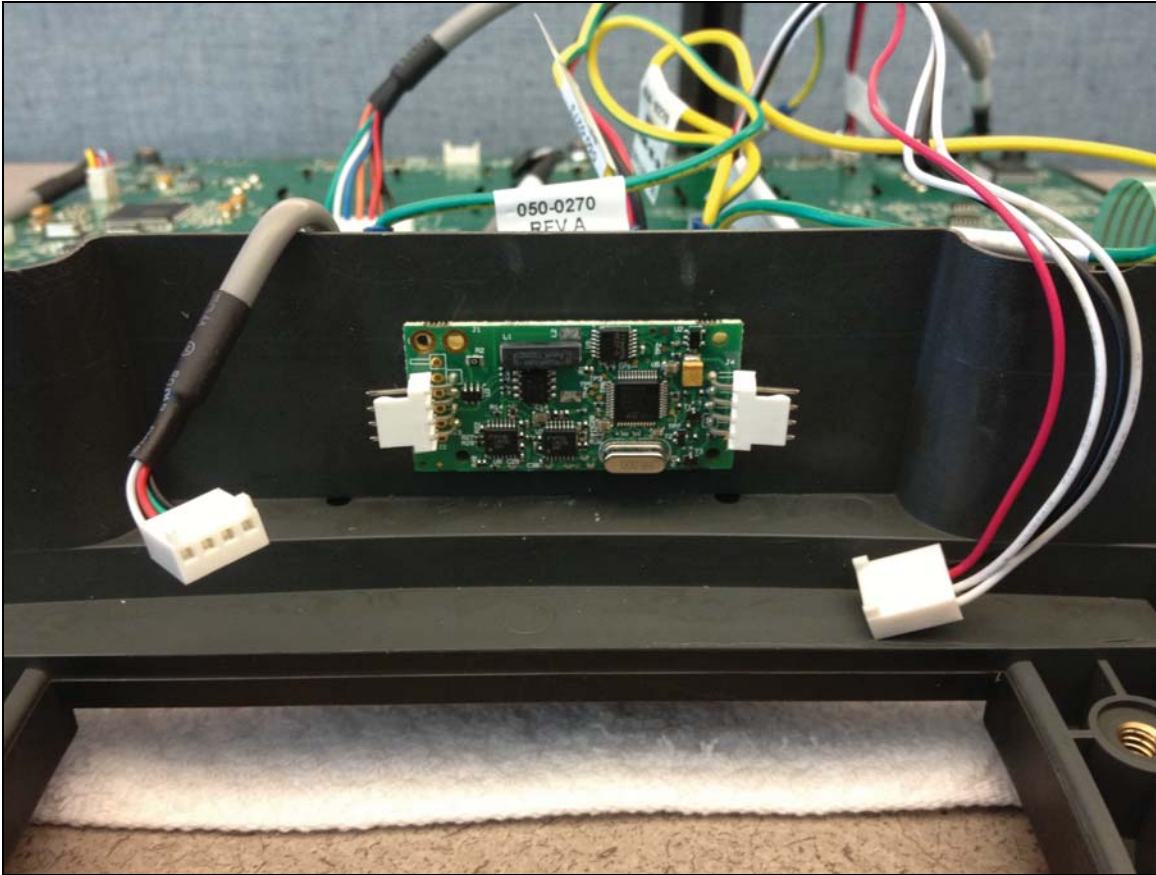


Fig. 4

6. With the wires removed, carefully remove the contact heart rate board (Fig. 5). Apply gently outward pressure between the contact heart rate board and the plastic shroud.

Note: Use caution when removing the contact heart rate board so that the double sided tape is not damaged. If needed, use a new piece of double sided tape to re-attach the board. The size of the double sided tape is 1½" X 1/16"



Fig. 5

7. Once the contact heart rate board has been removed, relocate it to the side of the original position (Fig. 6).

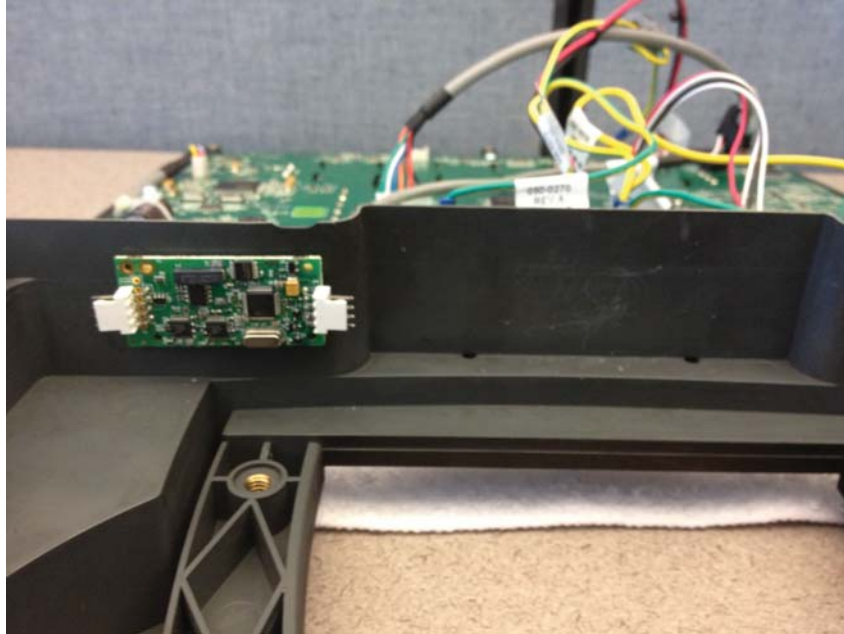


Fig. 6

8. With the contact heart rate board located in the new location, reconnect the two wire connections (Fig. 7)

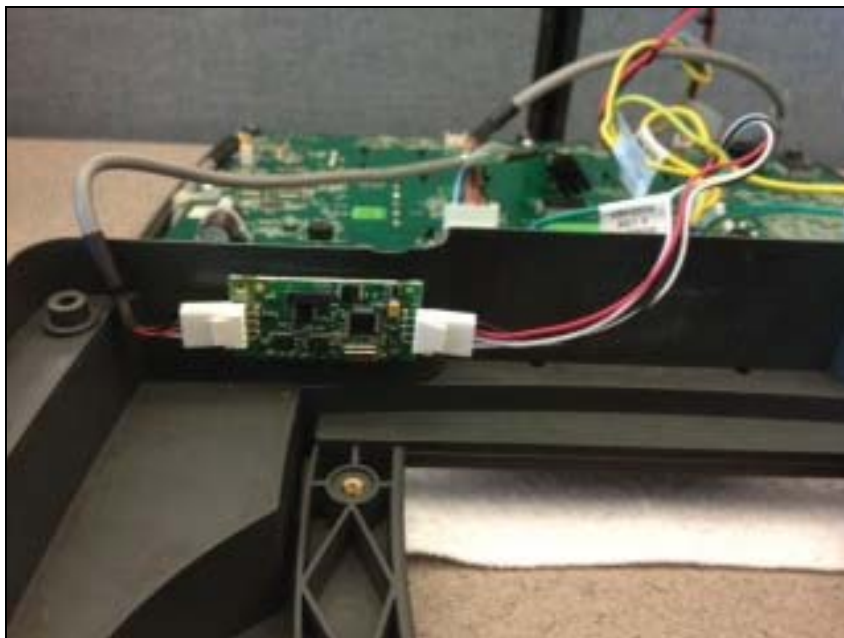


Fig. 7

The console will need to be re-assembled by attaching the rear plastic shroud to the front plastic shrouds. Make sure that the four wire connections are routed out of the opening in the back of the console (Fig. 8).



Fig. 8

9. Install the five black phillips head screws.
10. Install the display back onto the machine and test the heart rate for functionality.