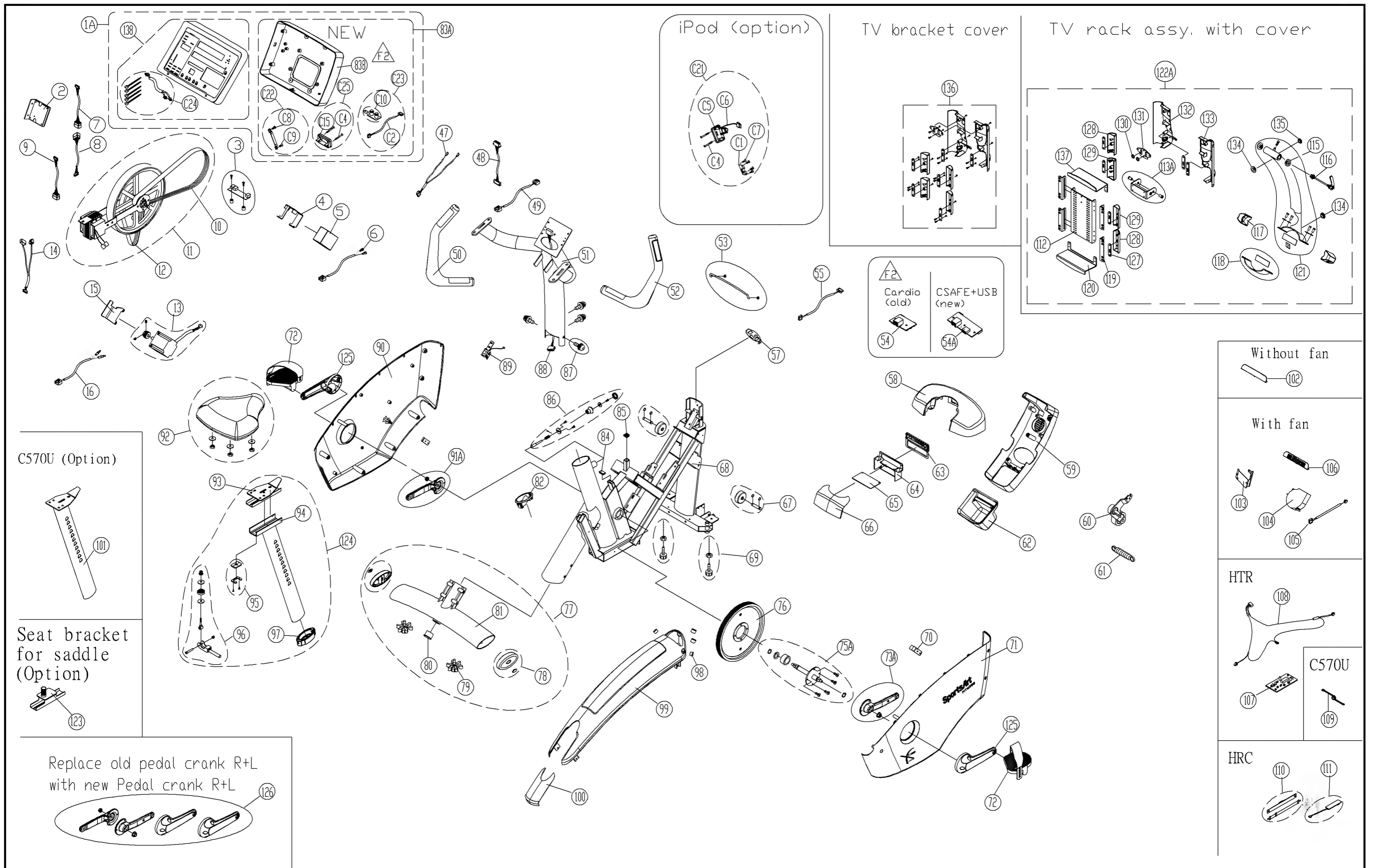


BBL	DESCRIPTION	QTY	PART#	BBL	DESCRIPTION	QTY	PART#
001	DISPLAY ASSEMBLY	1	C570U-01	083	DISPLAY BACK	1	C570U-83
001-1	** DISPLAY- IPOD® OPTION	1	C570U-001A	083A	DISPLAY BACK (IPOD®)	1	C570U-083A
002	DRIVE BRD	1	C570R-14	084	CAP	1	C570U-84
003	CSAFE BRD	1	C570U-03	085	SPACER	1	C51U-16
004	BATTERY BRACKET	1	C570U-04	086	SEAT PLACEMENT KNOB	1	C570U-86
005	BATTERY - 6 VDC 4.5 AH	1	5002-14	087	PEDESTAL BOLT & WASHER	4	C570U-87
006	WIRE- BATTERY TO DRIVE BRD	1	C570U-06	088	WIRE- DISPLAY TO PEDESTAL	1	C570U-88
007	WIRE- CSAFE UPPER TO PEDESTAL	1	C570U-07	089	SPEED SENSOR-OPTIC SENSOR	1	C570U-89
008	WIRE CSAFE LOWER TO PEDESTAL	1	C570U-08	090	COVER-LEFT	1	C570U-90
009	WIRE- BATTERY CHARGER	1	C570U-09	091A	PEDAL CRANK ARM ONLY-LEFT	1	C570R-101A
010	DRIVE BELT- 330J5 (838MM)	1	XT20-23	092	SEAT	1	5005-30
011	FLYWHEEL W/ ONE WAY BEARING	1	C570U-11	093	SEAT SLIDER	1	C570U-93
012	ALTERNATOR BELT- 470J8 (1200MM)	1	XT20-21	094	SEAT POST	1	C570U-94
013	ALTERNATOR	1	C570U-13	095	FRICITION BLOCK	1	C52U-21
014	WIRE- ALTERNATOR TO DRIVE BRD	1	C570U-14	096	PRESSURE MECHANISM	1	C570U-96
015	ALTERNATOR LOCK PLATE	1	C570U-15	097	SEAT POST INNER CAP	1	C570U-97
016	WIRE- ELECTROMAGNET TO DRIVE BRD	1	C570U-16	098	BOLT SOFT COVER	1	C570R-59
047	WIRE HTR	2	C570U-47	099	REAR COVER- UPPER	4	C570U-99
048	WIRE DRIVE BRD TO PEDESTAL	1	C570U-48	100	REAR COVER- LOWER	1	C570U-100
049	WIRE- OPTIC SENSOR TO DRIVE BRD	1	C570U-49	101	SEAT POST	1	C570U-101
050	HANDLEBAR-LEFT	1	C570U-50	102	AIR VENT COVER	1	C570U-102
050-1	CONTACT HR SENSOR PLATE ASSY	2	C572U-411	103	FAN BRACKET	1	C570R-141
051	PEDESTAL	1	C570U-51	104	FAN	1	C570R-142
052	HANDLEBAR-RIGHT	1	C570U-52	105	WIRE - FAN TO FAN PC BOARD	1	C570R-53
052-1	CONTACT HR SENSOR PLATE ASSY	2	C572U-411	106	FAN VENT COVER	1	C570R-140
053	BOOK HOLDER	1	T680-02	107	HTR PC BOARD	1	3100-74
054	CARDIO BRD	1	C580R-57	108	WIRE-HTR PAD WIRE TO HTR BRD	1	C570U-108
055	WIRE- DISPLAY TO C-SAFE BRD	1	C570R-05	109	WIRE- HTR BRD TO DISPLAY	1	C570U-109
057	NECK CONNECTOR	1	C570R-47	110	HEART RATE STRAP [OPTION]	1	3100-03A
058	FRONT LOWER COVER	1	C570U-58	111	TELEMETRY HRC RECEIVER BRD W/WIRE	1	C570R-139
059	FAN CVR-DISP MID BACK-PLASTIC ONLY	1	C570R-52	112	TV BRACKET BACK PLATE	1	153-310-088
060	IDLER PULLEY	1	XT20-06	113A	CONNECTOR	1	E822-455
061	IDLER PULLEY SPRING	1	XT20-07	115	BUSHING	2	053-313-040
062	BOTTLE HOLDER	1	C570U-62	116	QUICK RELEASE LEVER	1	053-251-030
063	AV TERMINAL BRD	1	T670-61	117	COVER	2	053-330-030
064	FACE PLATE- ON/OFF PLATE	1	C570R-49	118	MOUNT PIECE	1	153-391-100
065	ON/OFF BRD PROTECTOR	1	C570U-65	119	TV MOUNT SLIDER	4	153-310-058
066	POWER CONNECTOR BACK COVER	1	C570U-66	120	LOWER BRACKET	1	153-353-021
067	TRANSPORT WHEEL W/ AXLE	2	C570R-48	121	SUPPORT TUBE	1	153-391-070
068	FRAME	1	NA	122	EXTERNAL TV RACK	1	NA-SALES
069	LEVELER FOOT	2	C570U-69	123	UPRIGHT CYCLE SEAT ADAPTER	1	NA-SALES
070	COVER CONNECTOR	2	C570U-70	124	SEAT POST SET	1	C570U-124
071	COVER-RIGHT	1	C570U-71	125	CRANK COVER	2	C570R-157
072	PEDALS W/ STRAP - PAIR	1	C570R-62	126	PEDAL CRANK SET - L&R	1	C570R-158
072-1	PEDAL STRAPS-PAIR	1	C570R-500	127	ADJUSTER A	6	153-210-370
073A	PEDAL CRANK ARM ONLY-RIGHT	1	C570R-63A	128	CORNER COVER B	2	053-230-160
074	*NLA* USE PART# C570R-101A OR 63A	2	NA	129	CORNER COVER A	2	053-230-150
075A	SPINDLE	1	C570U-75	130	FLAT WASHER D15*d6.5*t3.0	2	003-301-004
076	DRIVE PULLEY ONLY w/MAGNETS-NO HUB	1	XT20-18	131	ADJUSTER B	1	153-210-380
077	REAR SUPPORT COLUMN SET	1	NA	132	COVER-RIGHT BACK	1	053-230-180
078	TUBE END CAP	2	XT20-14A	133	BACK COVER-LEFT	1	053-230-170
079	LEVELER FOOT W/ STAR NUT	2	G572U-429	134	CABLE PROTECTOR RING	3	000-076-495
080	REAR SUPPORT CAP	1	A911-15	135	COVER CAP	1	DF-100-038
081	REAR SUPPORT COLUMN	1	C570U-81	136	TV BRACKET COVER SET	1	153-291-210
082	SEAT POST SLEEVE	1	C570U-82	137	UPPER BRACKET	1	153-353-011

BBL	DESCRIPTION	QTY	PART#	BBL	DESCRIPTION	QTY	PART#
138	DISPLAY UPPER	1	C570U-138				
139	WIRES - INFRARED TO DISPLAY	1	060-427-140				
140	PHILLIPS SCREW M4*P0.7*L35	2	002-211-230				
141	IPOD® COVER A	1	062-130-450				
142	WIRES - IPOD® CONNECTOR	1	162-027-010				
143	PHILLIPS SCREW M3*L6	4	002-212-040				
144	MSHRM TOP PH SCREW M4*L12	2	002-210-003				
145	IPOD® BRACKET	1	162-110-680				
146	EARPHONE JACK	1	162-091-600				
147	IPOD® OPTION KIT	1	NA-SALES				
148	IPOD® SET BRACKET	1	153-391-170				
149	EARPHONE JACK+CABLE+TOOL	1	C570R-C23				
150	WIRES - IPOD® POWER+KEYS	1	153-391-190				
151	COVER FOR IPOD®	1	153-391-160				
501	FLYWHEEL STICKER	1	C570R-501				
NS-000 ##### PARTS NOT SHOWN #####							
NS-001	CHARGER- BATTERY (18VDC 2.0 AMP)	1	C52U-11C				
NS-002	DISPLAY OVERLAY	1	C570U-DD065				
NS-003	FLYWHEEL OPTIC STICKER	1	C570U-103				
NS-004	KEYPAD FOR DISPLAY *NO OVERLAY*	1	C570R-DD284				
NS-005	NUT SPINDLE	2	NT01-01				
NS-006	OWNER'S MANUAL	1	C570U-OM				
NS-007	POLAR HEART RATE SIMULATOR	1	POLAR-01				
NS-008	SPINDLE/FRAME BEARING -#6004Z	2	8003-71				
NS-009	TOOL - CRANK ARM PULLER	1	5002-87				
NT-000 ##### NOTES #####							
NT-001	SN START IPOD® OPTION 0241329						



CHANGE DATE	CHANGE DESCRIPTION	CHANGE NO.	NAME		DRAWN BY	UNITS	MM	SALES BLOW UP DIAGRAM	DIAGRAM NO.	CAE-F001A-F C570U		
2010.04.06	F0 新增 iPod (C1)~ (C25) (138)	---	潘衍耀			QTY	1					
2011.11.03	F1 區分 (54) CARDIO 小板有無 USB 充電功能	03-971007	潘衍耀		VERIFIED BY	VERSION	F2					MODEL
2012.01.10	F2 修改圖面, 新增編號 (54A) (83B) 區分新舊品		潘衍耀			RATIO	1:16					