

C51U 120 VAC

3/11/2011

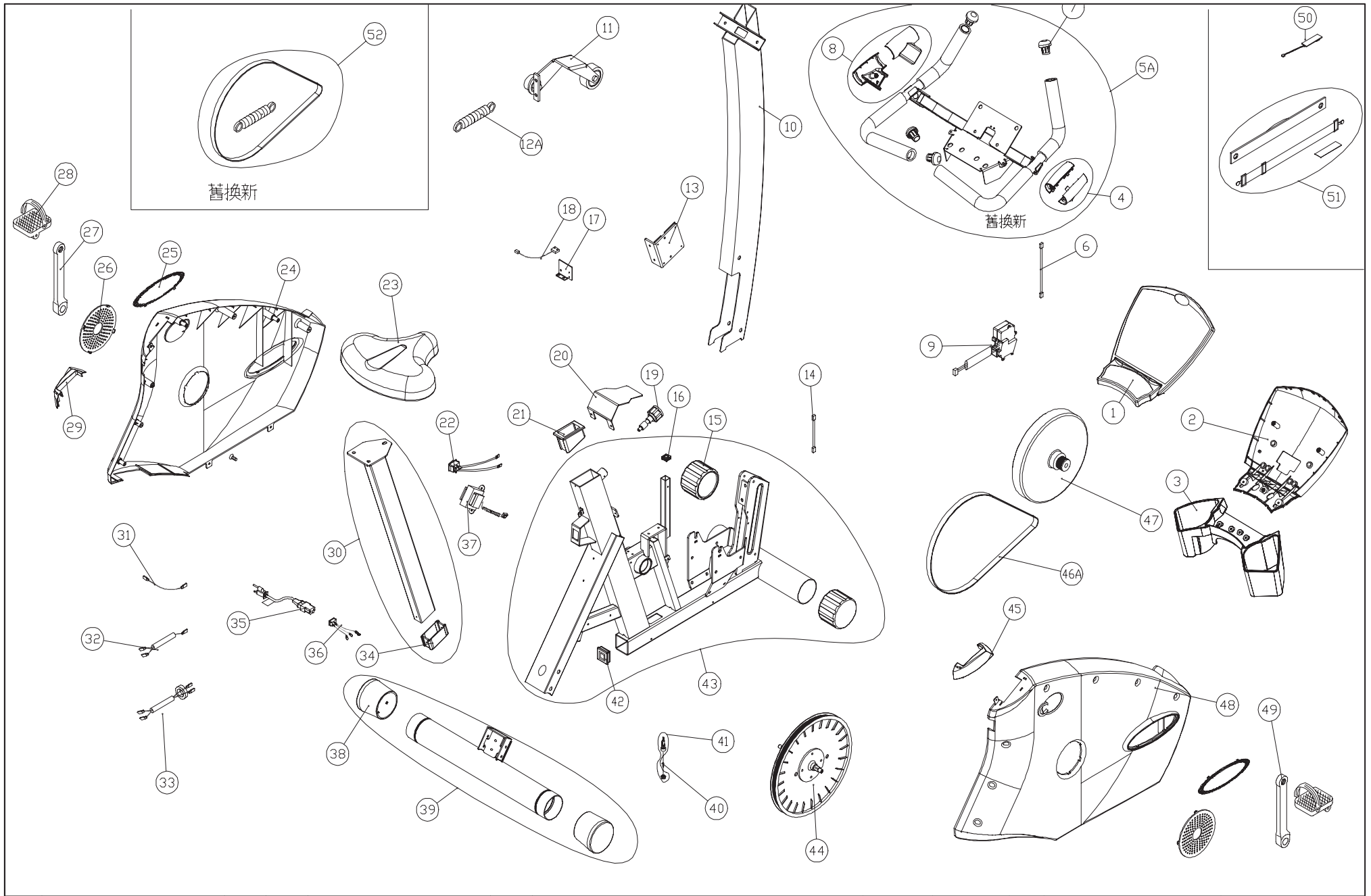
BBL	DESCRIPTION	QTY	PART #
1	DISPLAY ASSY	1	C51U-01
2	DISPLAY BACK PIECE	1	C51U-02
*	DISPLAY TOP PIECE RAW	1	C51U-02A
3	CUP HOLDER	1	C51U-03
4	HANDLEBAR COVER RIGHT	1	C51U-04
5A	HANDLEBAR ASSY	1	C51U-05
6	WIRE- UPPER PEDESTAL	1	C51U-06
7	HANDLEBAR PLUG	4	C51U-07
8	HANDLEBAR COVER LEFT	1	C51U-08
9	VR ASSY	1	506P-26
10	PEDESTAL	1	C51U-10
11	IDLER PULLEY	1	C51U-11
12	SPRING	1	C51U-12
13	DRIVE BOARD	1	C51U-13
14	WIRE - LOWER PEDESTAL	1	C51U-14
15	FRONT WHEEL	2	C51U-15
16	PLUG	1	C51U-16
17	BRACKET FOR REED SWITCH	1	C51U-17
18	REED SWITCH	1	C51U-18
19	LOCKING KNOB	1	C51U-19
20	BRACKET OVER DRIVE B.	1	C51U-20
21	SEAT POST SLEEVE TOP	1	C51U-21
22	ON / OFF SWITCH	1	0NSW-01
23	SEAT	1	C51U-23
24	SIDE COVER LEFT	1	C53U-41A
*	SIDE COVER LABEL - C51U	2	C51U-48A
25	COVER YELLOW FOR STICKER	2	C51U-25
26	COVER -DRIVE ASSY	2	C51U-26
27	LEFT CRANK ARM	1	C51U-27
28	FOOT PEDAL PAIR	1	5002-16
*	PEDAL STRAPS PAIR	1	5002-16A
29	POST COVER LEFT	1	C51U-29
30	SEAT POST	1	C51U-30
31	WIRE GROUND	1	C51U-31
32	WIRE, DRV BRD TO ON SWITCH	1	C51U-32
33	WIRE, ON SWITCH - POWER	1	C51U-33

BBL	DESCRIPTION	QTY	PART #
34	SEAT POST SLEEVE BOTTOM	1	C51U-34
35	POWER CORD	1	C51U-35
36	POWER CORD INLET ASSY	1	C51U-36
37	TRANSFORMER	1	C51U-37
38	SUPPORT FOOT	2	C51U-38
39	REAR SUPPORT TUBE (BLACK)	1	C51U-39
*	REAR SUPPORT TUBE (SILVER)	1	C51U-39A
40	FUSE 0.5A	1	F05T-01
41	FUSE HOLDER	1	FSHR-01
42	END CAP	1	C51U-42
43	FRAME	1	C51U-43
44	DRIVE PULLEY W/ SPINDLE	1	C51U-44
*	MAGNET FOR REED SWITCH	2	5006-14
45	POST COVER RIGHT	1	C51U-45
46A	DRIVE BELT	1	C51U-46
47	FLYWHEEL ASSY	1	C51U-47
48	SIDE COVER RIGHT	1	C53U-42A
*	SIDE COVER LABEL - C51U	2	C51U-48A
49	RIGHT CRANK ARM	1	C51U-49
50	HR RECEIVER	1	C51U-50
51	HEART RATE STRAP	1	3100-03A

ADDITIONAL PARTS NOT SHOWN

*	BEARING - CRANK	2	8003-71
*	HARDWARE PACKAGE (TOOLS ONLY)	1	C51U-HK
*	KEYPAD PCB (ELECTRONICS ONLY)	1	C51R-100
*	LOGO LABEL, DISPLAY	1	C51U-01A
*	NUT SPINDLE	2	NT01-01
*	C51 OVERLAY, UPPER & LOWER 2PC SET	1	C51R-DD012
*	OWNERS MANUAL	1	C51U-OM
*	POLAR HEART RATE SIMULATOR	1	POLAR-01
*	RUBBER CAP - CRANK ARM	2	5002-17B
*	SPRING, RETRO KIT	1	C51U-71
*	TOOL - CRANK ARM PULLER	1	5002-87

BUBBLE 51 IS A PURCHASED OPTION
WENT TO SILVER 0095042



C51U
 DP-F001A
 VERSION 4