

C50U 120 VAC

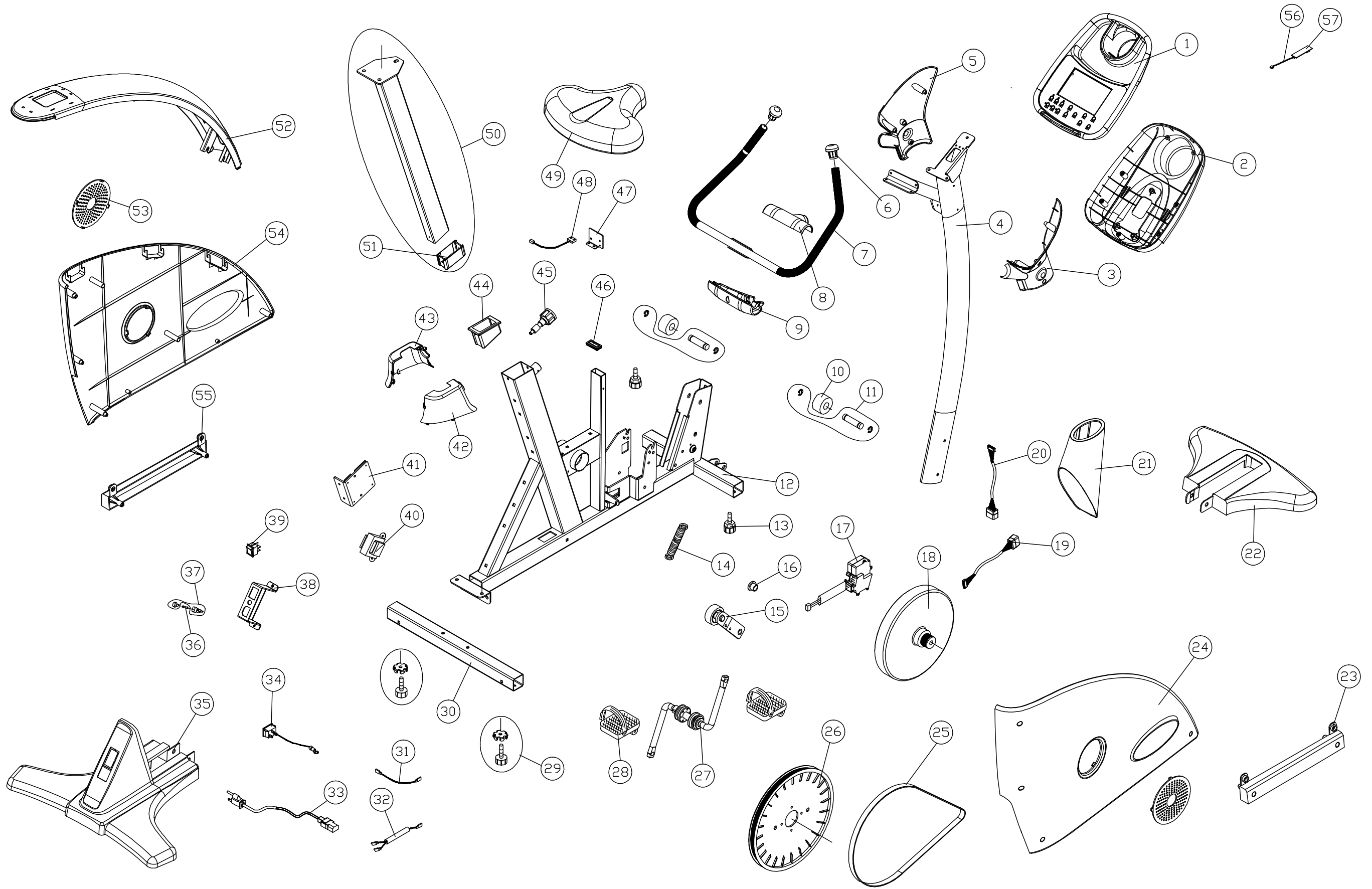
1/11/2011

BBL#	DESCRIPTION	QTY	PART #
1	C50U DISPLAY	1	C50U-01
2	DISPLAY BACK COVER	1	E80-06
3	DISPLAY LOWER RIGHT COVER	1	C50U-03
4	PEDESTAL	1	C50U-04
5	DISPLAY LOWER LEFT COVER	1	C50U-05
6	HANDLEBAR END CAP	2	1200-64
7	HANDLEBAR	1	C50U-07
8	SUPPORT UPPER COVER	1	C50U-08
9	SUPPORT LOWER COVER	1	C50U-09
10	TRANSPORT WHEEL	2	TR21-82
11	TRANSPORT WHEEL AXLE	2	TR21-81
12	NOT AVAILABLE - FRAME	1	C50U-12
13	REAR LEVELER	2	C570U-69
14	IDLER PULLEY SPRING	1	C51U-12
15	IDLER PULLEY	1	C50U-15
16	IDLER PULLEY BUSHING	1	C50U-16
17	RESISTANCE VR MOTOR	1	506P-26
18	FLYWHEEL	1	C50U-18
19	CABLE - DRIVE BRD TO LOWER PEDESTAL	1	C50U-19
20	CABLE - LOWER PEDESTAL TO DISPLAY	1	C50U-20
21	PEDESTAL LOWER COVER	1	C50U-21
22	FRONT LEG COVER	1	C50U-22
23	RIGHT HORIZONTAL COVER	1	C520U-14
24	RIGHT SIDE COVER	1	C50U-24
25	DRIVE PULLEY BELT 460J6	1	C51U-46
26	DRIVE PULLEY	1	C50U-26
*	MAGNET FOR REED SWITCH	2	5006-14
27	SPINDLE / CRANK SET	1	C50R-45
28	LEFT / RIGHT PEDAL SET	1	C50R-67
*	STRAPS, BIKE PEDAL PAIR	1	5002-16A
29	REAR LEVELER	2	C50R-23
30	REAR SUPPORT	1	C50U-30
31	CABLE - ON/OFF SWITCH TO FUSE HOLDER	1	C580R-27

BBL#	DESCRIPTION	QTY	PART #
32	CABLE - ON/OFF SWITCH TO DRIVE BRD	1	C50U-32
33	POWER CORD - UL	1	C51U-35
34	ON/OFF SWITCH	1	ONSW-01
35	REAR SUPPORT COVER	1	C50U-35
36	FUSE - FAST 0.5A 6*30	1	F05T-01
37	FUSE HOLDER	1	F5HR-01
38	ON/OFF SWITCH BRACKET	1	C50U-38
39	POWER CORD BRACKET	1	E80-26
40	TRANSFORMER - 110V	1	C51U-37
41	DRIVE BOARD	1	C51U-13
42	SEAT POST RIGHT COVER	1	C50U-42
43	SEAT POST LEFT COVER	1	C50U-43
44	SEAT POST UPPER COVER	1	C50U-44
45	SEAT ADJUST KNOB	1	C51U-19
46	FRAME CAP	1	C51R-05
47	REED SWITCH BRACKET	1	C50R-47
48	REED SWITCH	1	C51U-18
49	SEAT BOTTOM	1	C51U-23
50	SEAT POST+BOTTOM CAP	1	C50U-50
51	SEAT POST BOTTOM CAP	1	C50U-51
52	UPPER COVER	1	C50U-52
53	SPINDLE COVER	2	C51U-26
54	LEFT SIDE COVER	1	C50U-54
55	LEFT HORIZONTAL COVER	1	C50U-55
56	WIRE, HR RECEIVER TO DISPLAY	1	C50R-57
57	TELEMETRY RECEIVER BRD W/ CABLE	1	C570R-139

ADDITIONAL PARTS NOT SHOWN

*	OWNER'S MANUAL	1	C50U-OM
*	DISPLAY OVERLAY	1	C50U-DD013
*	HEART RATE STRAP	1	3100-03A
*	POLAR HEART RATE SIMULATOR	1	POLAR-01
*	E-PROM C50R/U	1	C50-EP



CHANGE DATE	CHANGE DESCRIPTION	CHANGE NO.	NAME		DRAWN BY	UNITS	MM	SALES BLOW UP DIAGRAM	DIAGRAM NO.	CAG-F001A-A	
					VERIFIED BY	QTY	1			MODEL	C50U
						VERSION	A0				
						RATIO	1/10				