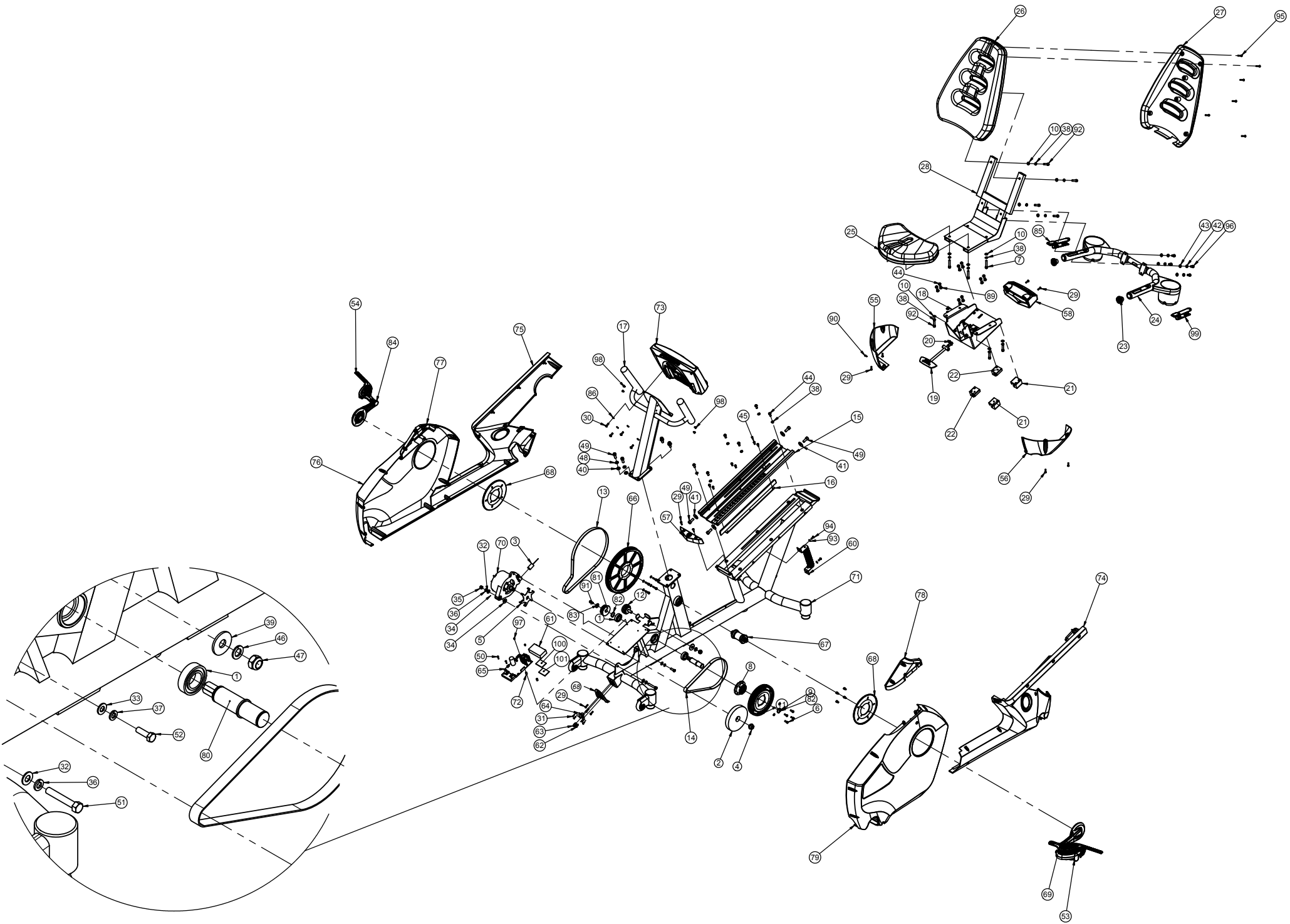


# NAUTILUS R916



REF. NO	DESCRIPTION	PART NO.
1	S6005 25 x 47 Bearing	000-6276
2	Flywheel	000-6238
3	Assembly, Speed Sensor	SM21445
4	Nut, Alternator	SM21778
5	Disk, Speed Sensor	SM22517
6	SCW-RHP, M6 1.0 x 16 SS	902-5565
7	SCW- SHCS M8 1.25 x 45 SS	902-5685
8	Pulley Assembly, Intermediate Hub	000-6314
9	Washer, Flat M6, regular Zinc	902-6104
10	Washer, Flat M8, regular Zinc	902-6107
11	Overmold, Intermediate 8V Pulley	000-6214
12	Belt Tensioner	000-6232
13	BELT JASON 1120-8MT-16	000-6291
14	BELT	000-6432
15	EXTRUSION, SEAT RAIL	000-6361
16	WELDMENT, SEAT BRAKE	000-6459
17	MAST ASSEMBLY	000-6456
18	Assy, Seat Carriage	001-0378
19	Seat Adjustment Handle, Overmold	000-6374
20	Seat Adjustment Spring	000-6471
21	Ingus, Linear Bushing, Wide	000-6469
22	Ingus, Linear Bushing	000-6468
23	End Cap	000-6207
24	Assembly, R9, Handlebar	001-0460
25	Seat Cushion, Lower	000-6389
26	Seat Back Cushion	000-6390
27	Shroud, Seat Back	000-6391
28	Seat Frame Weldment	000-6385
29	SCW-PHP, #10-32 x .75 SS	901-5493
30	SCW-PHP, .25-20 x .75 SS	901-5513
31	SCW-PHP, #6-32 x .5 SS	901-5445
32	WSH-Flat 0375 SAE Zinc	902-3645
33	WSH-Flat 0313 SAE Zinc	902-3640
34	Washer, Shoulder, .38 ID	SM22191
35	Nut-NL, .375-16, G8-Zinc	902-3189
36	Washer, Lock, 0375 Zinc	902-3853
37	Washer, Lock, 0313 Zinc	902-3852
38	M8 LOCK WASHER	000-6275
39	WSH-Flat, M12 Wide, BLKZ	902-6030
40	WSH-Flat, M10 Regular, BLKZ	902-6026
41	WSH-Flat, M10 Wide	902-6027
42	WSH-Lock, 0313 SS	902-3829
43	WSH-Flat, M8 Regular SS	902-6065
44	SCW-BHCS, M8 x 1.25 x 20 SS	902-5028
45	SCW-BHCS, M6 x 1.0 x 16 SS	902-5013
46	M12 LOCK WASHER	000-6488
47	Nut, NL, M12 - 1.75 G2, BLKZ	902-4143
48	M10 LOCK WASHER	000-6484
49	SCW-SHCS, M10, 1.25 x 25 G2, BLKZ	902-4742
50	SCW-FHP, M4. .7 x 20 SS	902-5108

REF. NO	DESCRIPTION	PART NO.
51	SCW-HHCS, .375-24 x 2.25 G8, Zinc	902-0424
52	SCW-HHCS, .313-18 x 1.0 G8, Zinc	902-0363
53	(CS) Kit, Pedals, LH/RH, U/R916	001-0342
55	Seat Shroud, Lower right	000-6451
56	Seat Shroud, Lower left	000-6452
57	SEAT RAIL FRONT SHROUD	000-6485
58	SEAT RAIL REAR SHROUD	000-6486
59	INLET COVER, RECUMBENT	000-6402
60	POWER RESISTOR	000-6217
61	5100 Battery kit (includes Battery, Loop & Hook Velcro, and Tyrap)	SM14123
62	Cable, Coaxial, TV/Power	000-6490
63	COAX Female Connector	000-6246
64	Assembly, Cable, External Power	SM13587
65	Assembly, PCBA, Power Control	SM27451
66	Pulley, 112 Tooth, 8M	000-6248
67	ISIS BB, 73 x 128mm	000-6244
68	Disc, Crank	001-6365
69	Left Crank Arm	000-6324
70	ASSEMBLY. ALTERNATOR	000-6240
71	R916 Frame assembly	001-0380
72	Circuit board spacer	000-6245
73	CONSOLE	SM41703
74	Assy, Rear Seat Shroud, LT, R916	001-0384
75	Assy, Rear Seat Shroud, RT, R916	001-0385
76	Assy, Front Shroud, RT, W/Decal, R916	001-0383
77	Mast Cover Shroud, RT w/ hardware	001-0393
78	Mast Cover Shroud, LT w/ hardware	001-0392
79	Assy, Front Shroud, LT, W/Decal, R916	001-0382
80	Shaft, Intermediate Hub	INCL W/# 8
81	Pulley, 8m, Intermediate, 22T	000-6229
82	Basic External Retaining Ring	001-0351
83	WSH-FLAT, M8 WIDE, BLKZ	902-6024
84	Right Crank arm	001-0391
85	(CS) Kit, CHR, RH, Upperhandle, U/R916	001-0348
86	WSH-FLAT, M6 REGULAR NICKLE	902-6531
87	SCW-SHCS, M6 1.0 x 25 SS	902-5667
88	SCW-SHCS, M6 1.0 x 10 SS	902-5662
89	WSH-FLAT, M8 NARROW NICKLE	902-6533
90	SCW-PHP, M4 .7 x 12 SS	902-5864
91	SCW-SHCS, M8 1.25 x 16 G2 BLKZ	902-4724
92	SCW- SHCS M8 1.25 x 35 SS	902-5683
93	WSH-FLAT, M6 REGULAR BLKZ	902-6020
94	SCW- SHCS M6 1.0 x 16 SS	902-5665
95	SCW-PHP, #10-32 x 1.25 SS	901-5496
96	SCW-SHCS, M8 1.25 x 16 SS	902-5679
97	SCW-RHP, M4 0.7 x 8 SS	902-5537
98	SCW-PHP, #10-32 x .3125 SS	001-5490
99	(CS) Kit, CHR, LH, Upperhandle, U/R916	001-0349
NP	Power Supply, (Requires SM002-0365 Power Cord )	001-0501
NP	POWER CORD,NEMA5-15,110V	SM002-0365
NP	TRANSPORT WHEEL	000-6247

REF. NO	DESCRIPTION	PART NO.
NP	STABILIZER FOOT	000-6270
NP	(CS) Kit, Spares-Common, HW, R916	001-0381
NP	R9 Hardware Kit	001-0395
NP	Assembly, Cable, CHR, Rail to Handle Bar	001-5100
NP	Assembly, Cable, CHR, Console to rail	001-5110
NP	U/R916 Owner's Manual	001-6882
NP	U/R916 Service Manual	001-6884
NP	R916 Assembly Manual	001-6988
NP	CD, Owners Manual	001-6992
NP	Assembly, Cable, Alternator	002-9070
NP	Assembly, Cable, Load Resistor	002-9071
NP	Assembly, Cable, Battery	SM25465
NP	Assembly, Cable, Console Interface	SM25473
NP	IC, CONTACT HR W/MOUNT HEADER	SM27767
NP	KEYPANEL, CONSOLE	SM40468
NP	LENS, C51 CONSOLE	SM40803
NP	PCBA ASSY	SM40820
NP	PCB ASSY, C51 LCD DISPLAY	SM40826
NP	Assembly, PCBA, Heart Rate telemetry	SM41187
NP	Assyembly, Cable, Telemetry Heart Rate	SM41702