

This document contains information proprietary to Magnum Fitness Systems. It is submitted in confidence and is to be used solely for the purpose for which it is furnished. This document and such information is not to be reproduced, transmitted, or used in whole or part without written authorization.

TOLERANCES: + 0.000"
- 1/16"

UNLESS OTHERWISE SPECIFIED
DIMENSIONS ARE IN INCHES.

DRAWN BY:
RAD

MAGNUM FITNESS SYSTEMS

2201 12th. Avenue
S. Milwaukee, WI, 53172

TITLE: 3012 - TRICEP CURL

DATE:
11/10/04

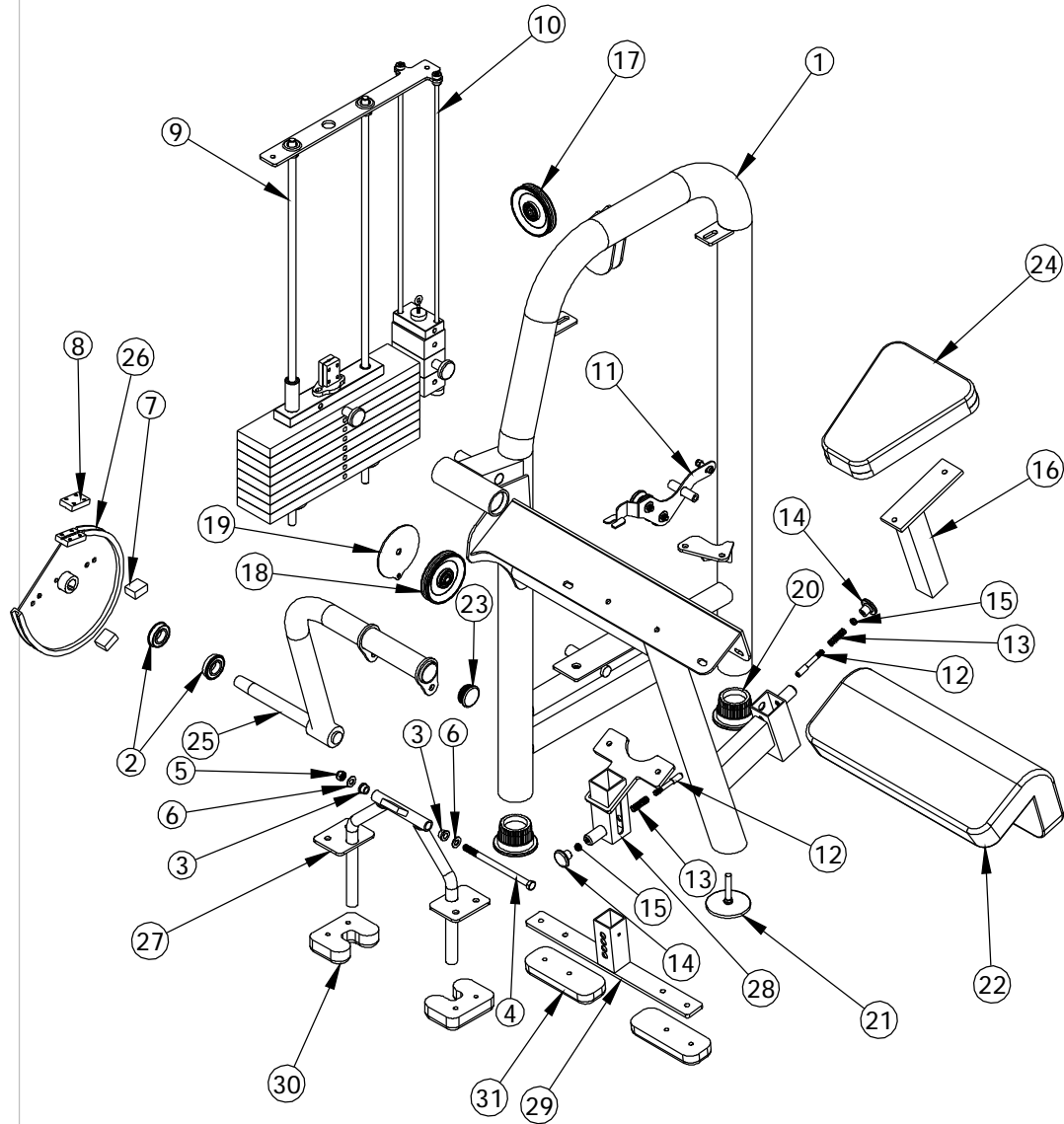
PART NO.
xxx-xxx

JOB NO.
XXXXXXXX

REV:
1

FILE LOCATION: C:\Cad Drawings\Solid Works\

1 OF 3



This document contains information proprietary to Magnum Fitness Systems. It is submitted in confidence and is to be used solely for the purpose for which it is furnished. This document and such information is not to be reproduced, transmitted, or used in whole or part without written authorization.

TOLERANCES: + 0.000"
- 1/16"

UNLESS OTHERWISE SPECIFIED
DIMENSIONS ARE IN INCHES.

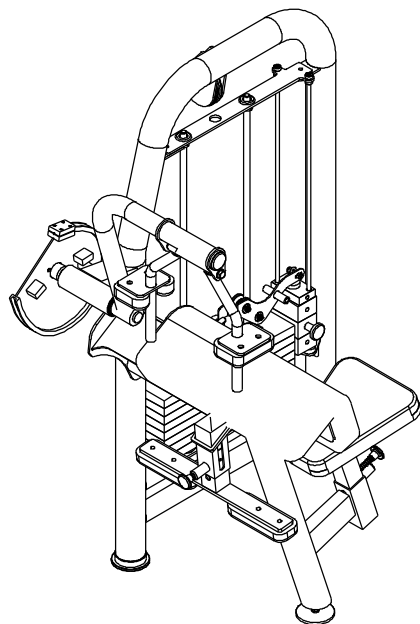
DRAWN BY:
RAD

MAGNUM FITNESS SYSTEMS
2201 12th. Avenue
S. Milwaukee, WI, 53172

TITLE: 3012 - TRICEP CURL

DATE: 11/10/04	PART NO. xxx-xxx	JOB NO. XXXXXXXX	REV: 1
-------------------	---------------------	---------------------	-----------

FILE LOCATION: C:\Cad Drawings\Solid Works\



(REF.)

ITEM NO.	QTY.	PART NO.	DESCRIPTION
1	1	101-194	MAIN FRAME
2	2	851-420	FLANGE BEARING - 1 1/8"
3	2	851-514	1/2" BRASS BUSHING
4	1	810-828	HHB - 1/2-13 x 8"
5	1	817-408	1/2" NYLON NUT
6	2	818-008	1/2" FLAT WASHER
7	2	339-021	CHROMED STOP
8	1	339-714	1/2" x 1 1/2" F.S. - 2 1/4"
9	1	101-279	WEIGHT STACK ASSEMBLY
10	1	101-154	MINI-WEIGHT STACK
11	1	101-282	3000 SERIES BANANA (R)
12	2	855-302	SPRING PIN w/ 5/32"
13	2	852-807	SPRING
14	2	852-207	GOLD PULL KNOB
15	2	817-306	3/8"-16 JAM NUT
16	1	339-708	SEAT POST - CHROMED
17	1	853-303	4" CABLE PULLEY - 3/8" NARROW HOLE
18	1	853-300	4" CABLE PULLEY - 1/2" NARROW HOLE
19	1	501-125	1/8" PLASMA
20	2	850-056	3" FOOT
21	1	833-129	4" FOOT (LONG)
22	1	900-036	ARM PAD
23	1	850-035	2" ROUND END CAP
24	1	900-239	UPHOLSTERY
25	1	101-197	3012 MAIN ARM
26	1	101-201	3012 CAM ASSEMBLY
27	1	101-199	3012 HANDLE
28	1	101-062	KNEE HOLD DOWN
29	1	339-790	KNEE HOLD DOWN
30	2	902-003	UPHOLSTERY
31	2	900-041	UPHOLSTERY

This document contains information proprietary to Magnum Fitness Systems. It is submitted in confidence and is to be used solely for the purpose for which it is furnished. This document and such information is not to be reproduced, transmitted, or used in whole or part without written authorization.

TOLERANCES: + 0.000"
- 1/16"

UNLESS OTHERWISE SPECIFIED
DIMENSIONS ARE IN INCHES.

DRAWN BY:
RAD

MAGNUM FITNESS SYSTEMS

2201 12th. Avenue
S. Milwaukee, WI, 53172

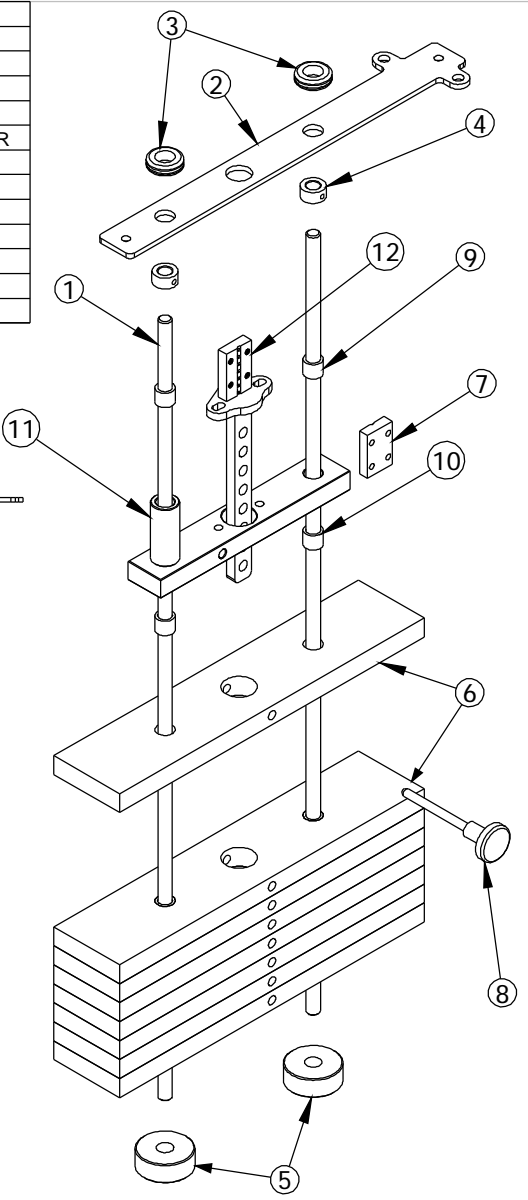
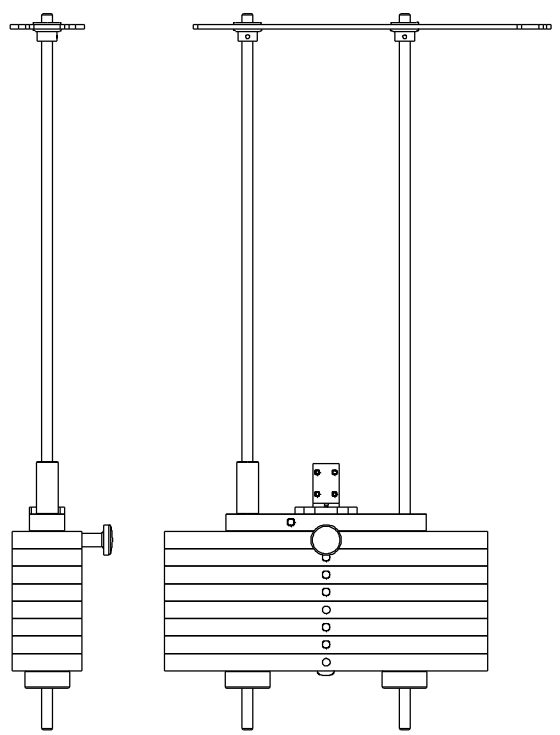
TITLE: 3012 - TRICEP CURL

DATE: 11/10/04	PART NO. xxx-xxx	JOB NO. XXXXXXXX	REV: 1
-------------------	---------------------	---------------------	-----------

FILE LOCATION: C:\Cad Drawings\Solid Works\

3 OF 3

ITEM NO.	QTY.	PART NO.	DESCRIPTION
1	2	200-384	5/8" GUIDE ROD - 41"
2	1	500-963	1/4" PLASMA
3	2	858-005	5/8" RUBBER GROMMET
4	2	852-610	5/8" SET COLLAR
5	2	838-211	ROUND WEIGHT STACK BUMPER
6	8	300-410	1" x 4" F.S. - 18 1/2"
7	1	339-714	1/2" x 1 1/2" F.S. - 2 1/4"
8	1	852-007	SELECTOR PIN w/ 6 1/2" CORD
9	2	849-001	7/8"OD x 5/8"ID x 3/4" BUSHING
10	16	849-002	7/8"OD x .640"ID x 3/4" BUSHING
11	1	101-129	TOP WEIGHT PLATE
12	1	101-280	CENTER STICK - 8



This document contains information proprietary to Magnum Fitness Systems. It is submitted in confidence and is to be used solely for the purpose for which it is furnished. This document and such information is not to be reproduced, transmitted, or used in whole or part without written authorization.

TOLERANCES: + 0.000"
- 1/16"

UNLESS OTHERWISE SPECIFIED
DIMENSIONS ARE IN INCHES.

DRAWN BY:
RAD

MAGNUM FITNESS SYSTEMS
2201 12th. Avenue
S. Milwaukee, WI, 53172

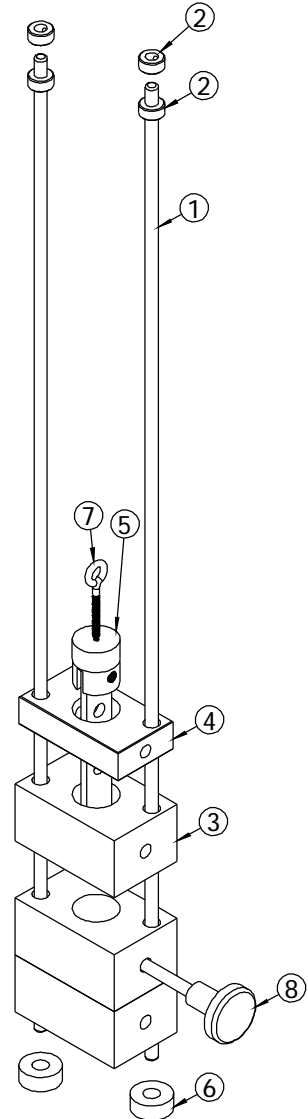
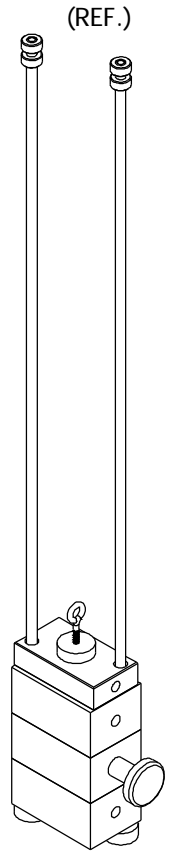
TITLE: 3000 SERIES WEIGHT STACK
56" FRAME - 8 PLATE STACK

DATE: 11/08/04	PART NO. 101-279	JOB NO. XXXXXXXX	REV: 1
-------------------	---------------------	---------------------	-----------

FILE LOCATION: C:\Cad Drawings\Solid Works\

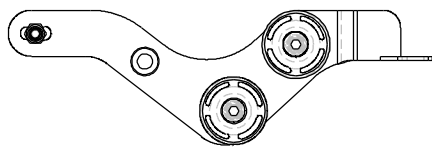
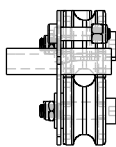
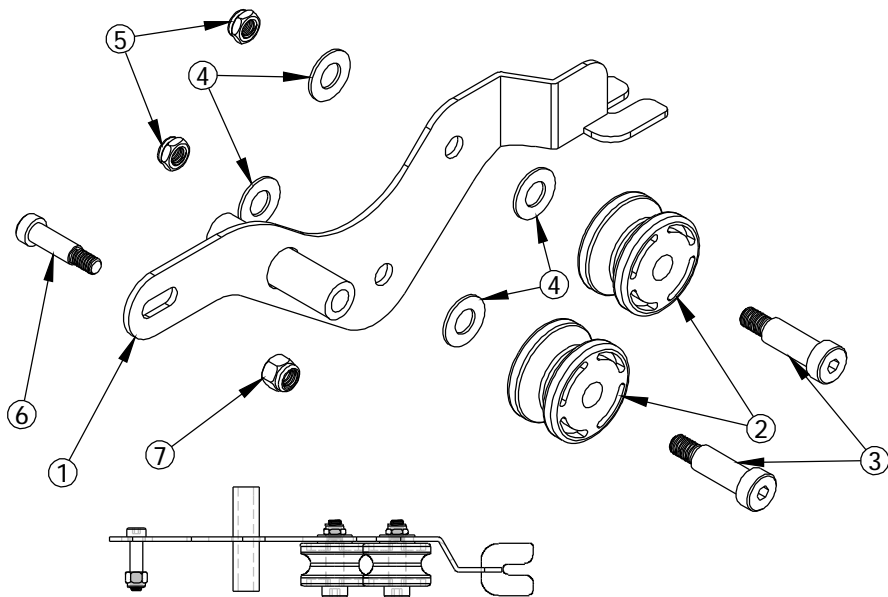
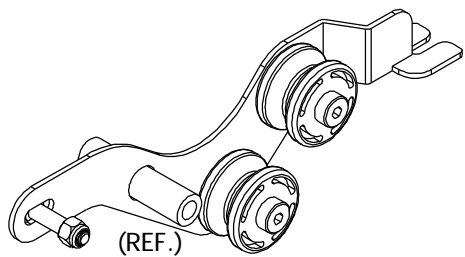
1 OF 1

ITEM NO.	QTY.	PART NO.	DESCRIPTION
1	2	200-408	3/8" GUIDE ROD - 34 1/8"
2	4	852-607	3/8" SHAFT COLLAR
3	3	300-413	2" x 4" F.S. - 2 9/16"
4	1	807-001	1" x 2 1/4" F.S. - 4"
5	1	101-053	MINI WEIGHT STACK CENTER STICK
6	2	858-251	1/2" RUBBER BUMPER
7	1	818-899	3/8" EYE BOLT - 2 1/2"
8	1	852-008	SELECTOR PIN w/ 4" CORD



<p>This document contains information proprietary to Magnum Fitness Systems. It is submitted in confidence and is to be used solely for the purpose for which it is furnished. This document and such information is not to be reproduced, transmitted, or used in whole or part without written authorization.</p>	<p>TOLERANCES: + 0.000" - 1/16"</p>	<p>MAGNUM FITNESS SYSTEMS 2201 12th. Avenue S. Milwaukee, WI, 53172</p>		
	<p>UNLESS OTHERWISE SPECIFIED DIMENSIONS ARE IN INCHES.</p>	<p>TITLE: Mini-Weight Stack for Left Banana</p>		
<p>DRAWN BY: J. Wenzel</p>	<p>DATE: 08/02/04</p>	<p>PART NO. 101-154</p>	<p>JOB NO. XXXXXXXX</p>	<p>REV: 1</p>
<p>FILE LOCATION: C:\Cad Drawings\Solid Works\</p>				<p>1 OF 1</p>

ITEM NO.	QTY.	PART NO.	DESCRIPTION
1	1	101-281	BANANA SUB-ASSEMBLY
2	2	853-314	ROLLER w/ BEARING
3	2	810-954	1/2" x 1 1/4" SHOULDER BOLT
4	4	818-008	1/2" FLAT WASHER
5	2	817-306	3/8"-16 JAM NUT
6	1	810-953	3/8" SHOULDER BOLT - 1"
7	1	817-406	3/8" NUT



This document contains information proprietary to Magnum Fitness Systems. It is submitted in confidence and is to be used solely for the purpose for which it is furnished. This document and such information is not to be reproduced, transmitted, or used in whole or part without written authorization.

TOLERANCES: + 0.000"
- 1/16"

UNLESS OTHERWISE SPECIFIED
DIMENSIONS ARE IN INCHES.

DRAWN BY:
RAD

MAGNUM FITNESS SYSTEMS
2201 12th. Avenue
S. Milwaukee, WI, 53172

TITLE: 3000 SERIES BANANA (RIGHT)

DATE: 11/08/04	PART NO. 101-282	JOB NO. XXXXXXXX	REV: 1
-------------------	---------------------	---------------------	-----------

FILE LOCATION: C:\Cad Drawings\Solid Works\

1 OF 1