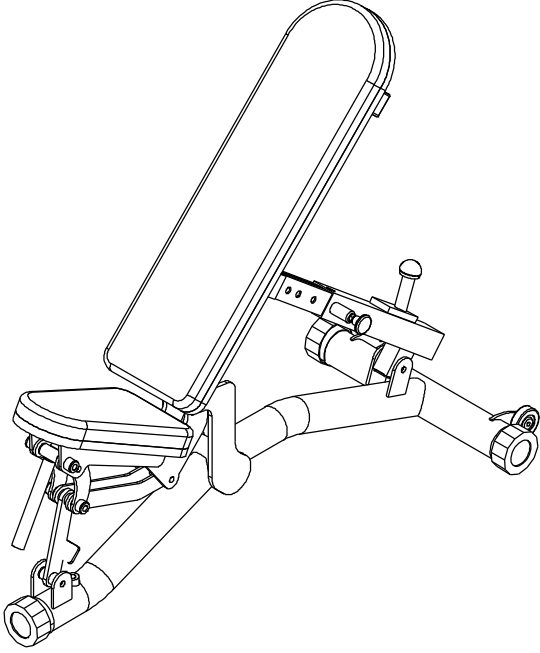
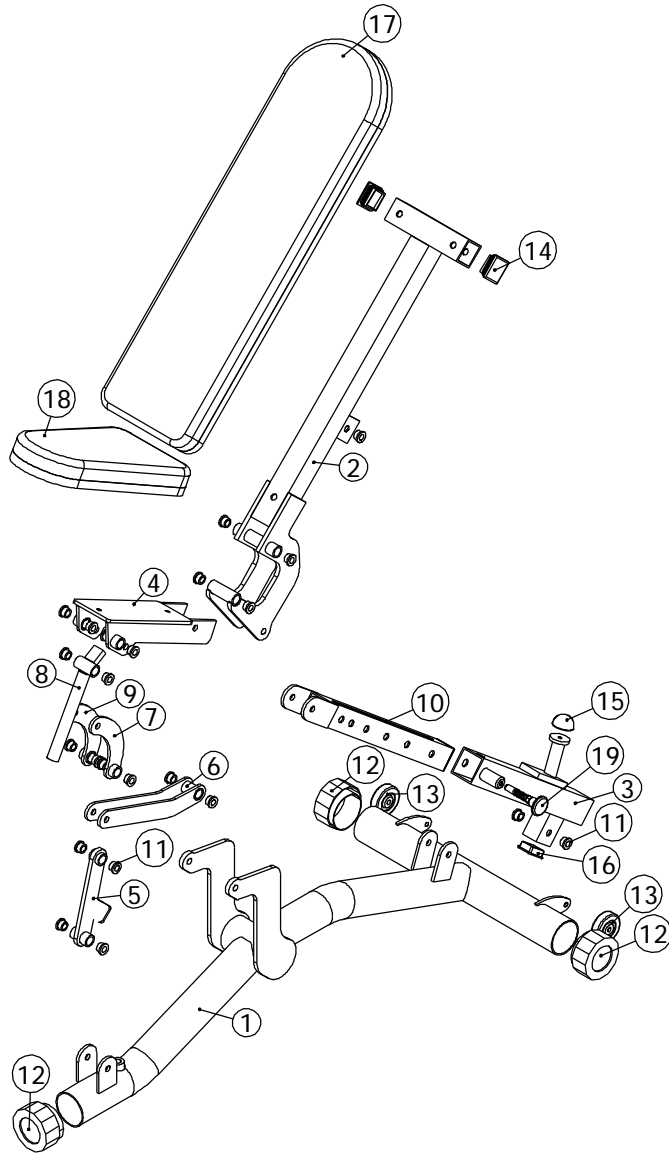


ITEM NO.	QTY.	PART NO.	DESCRIPTION
1	1	101-716	Main Frame
2	1	101-717	Back Pad Frame
3	1	101-718	Slide
4	1	101-719	Seat Pad Frame
5	1	101-720	Stop
6	1	101-721	Connection
7	1	101-722	Connection
8	1	101-723	Grip
9	1	101-724	Connection
10	1	101-725	Chrome Slide
11	24	851-514	1/2" BRASS BUSHING
12	3	850-061	3" Hex Foot
13	2	850-507	2 1/2" Wheel
14	3	850-004	2" x 2" END CAP
15	1	838-223	HALF-ROUND RUBBER BUMPER
16	1	850-010	1 1/2" X 2" END CAP
17	1	901-150	Back Pad
18	1	901-151	Seat Pad
19	1	101-140	SPRING PIN ASSEMBLY



<p>This document contains information proprietary to Magnum Fitness Systems. It is submitted in confidence and is to be used solely for the purpose for which it is furnished. This document and such information is not to be reproduced, transmitted, or used in whole or part without written authorization.</p>	<p>TOLERANCES: + 0.000" - 1/16"</p>	<p>MAGNUM FITNESS SYSTEMS 2201 12th. Avenue S. Milwaukee, WI, 53172</p>		
	<p>UNLESS OTHERWISE SPECIFIED DIMENSIONS ARE IN INCHES.</p>	<p>TITLE: A85 - Flat to Incline Bench</p>		
<p>DRAWN BY: Josh Ellis</p>	<p>DATE: 07/18/07</p>	<p>PART NO. xxx-xxx</p>	<p>JOB NO. XXXXXXXX</p>	<p>REV: 1</p>
<p>FILE LOCATION: C:\Cad Drawings\Solid Works\</p>				<p>1 OF 2</p>



This document contains information proprietary to Magnum Fitness Systems. It is submitted in confidence and is to be used solely for the purpose for which it is furnished. This document and such information is not to be reproduced, transmitted, or used in whole or part without written authorization.

TOLERANCES: + 0.000"
- 1/16"

MAGNUM FITNESS SYSTEMS

2201 12th. Avenue
S. Milwaukee, WI, 53172

UNLESS OTHERWISE SPECIFIED
DIMENSIONS ARE IN INCHES.

TITLE: A85 - Flat to Incline Bench

DRAWN BY:
Josh Ellis

DATE:
07/18/07

PART NO.
xxx-xxx

JOB NO.
XXXXXXXX

REV:
1

FILE LOCATION: C:\Cad Drawings\Solid Works\

2 OF 2