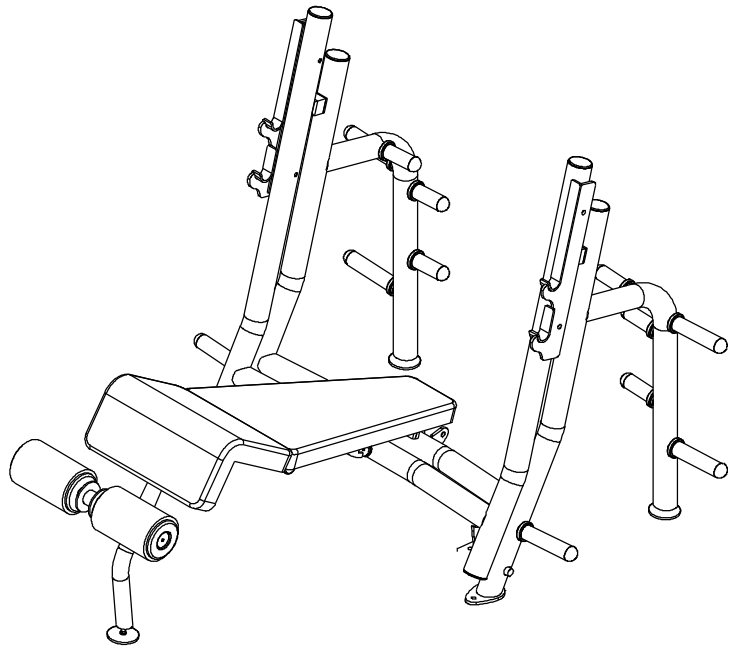


ITEM NO.	QTY.	PART NO.	DESCRIPTION
1	1	101-710	Main Frame
2	1	101-711	Bench Frame
3	1	101-712	Breaker Frame
4	2	851-317	1" PILLOW BLOCK
5	2	819-316	1" Ext. SNAP RING
6	8	819-124	1 21/64" O.D. x 1 1/64" I.D. 14GA
7	2	850-012	1" Vinyl Cap
8	2	858-260	2" x 2" RUBBER BUMMPER
9	6	850-045	3" ROUND END CAP
10	12	858-253	2 1/2"OD x 1 7/8"ID RUBBER BUMPER - 1/2"
11	12	850-030	Bullet End Cap
12	1	838-223	HALF-ROUND RUBBER BUMPER
13	4	850-035	2" ROUND END CAP
14	1	339-079	Chrome Take Off (Right)
15	1	339-080	Chrome Take Off (Left)
16	1	900-017	Upholstery - Back Pad
17	1	900-018	Upholstery - Bent Pad
18	2	836-216	ROLLER END CAP w/ 5/16" HOLE
19	2	902-007	9" ROLLER PAD
20	2	836-215	ROLLER END CAP w/ 2" HOLE
21	3	833-129	4" FOOT (LONG)



This document contains information proprietary to Magnum Fitness Systems. It is submitted in confidence and is to be used solely for the purpose for which it is furnished. This document and such information is not to be reproduced, transmitted, or used in whole or part without written authorization.

TOLERANCES: + 0.000"
- 1/16"

UNLESS OTHERWISE SPECIFIED
DIMENSIONS ARE IN INCHES.

MAGNUM FITNESS SYSTEMS
2201 12th. Avenue
S. Milwaukee, WI, 53172

TITLE: A680 - Breaker Decline Bench

DRAWN BY:
Josh Ellis

DATE:
07/16/07

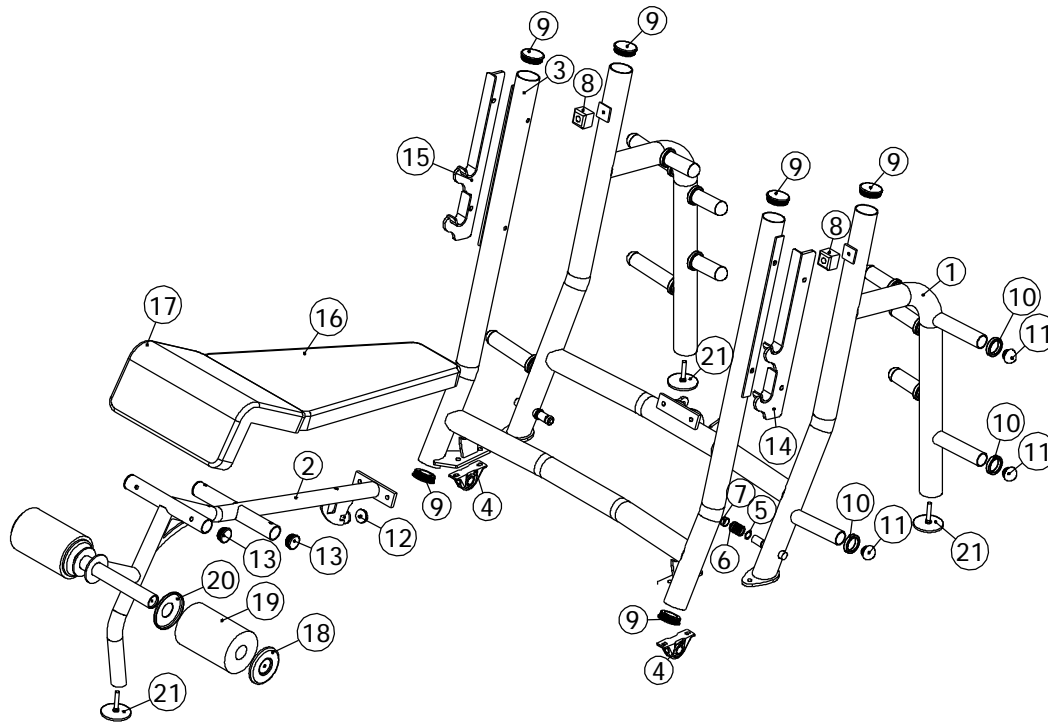
PART NO.
xxx-xxx

JOB NO.
XXXXXXXX

REV:
1

FILE LOCATION: C:\Cad Drawings\Solid Works\

1 OF 2



This document contains information proprietary to Magnum Fitness Systems. It is submitted in confidence and is to be used solely for the purpose for which it is furnished. This document and such information is not to be reproduced, transmitted, or used in whole or part without written authorization.

TOLERANCES: + 0.000"
- 1/16"

UNLESS OTHERWISE SPECIFIED
DIMENSIONS ARE IN INCHES.

DRAWN BY:
Josh Ellis

DATE:
07/16/07

PART NO.
xxx-xxx

JOB NO.
XXXXXXXX

REV:
1

MAGNUM FITNESS SYSTEMS

2201 12th. Avenue
S. Milwaukee, WI, 53172

TITLE: A680 - Breaker Decline Bench

FILE LOCATION: C:\Cad Drawings\Solid Works\

2 OF 2