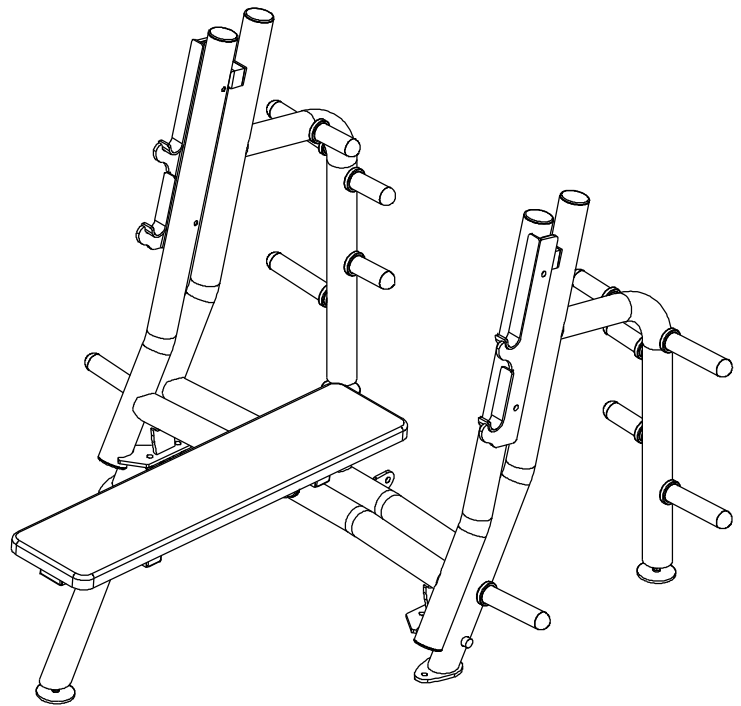
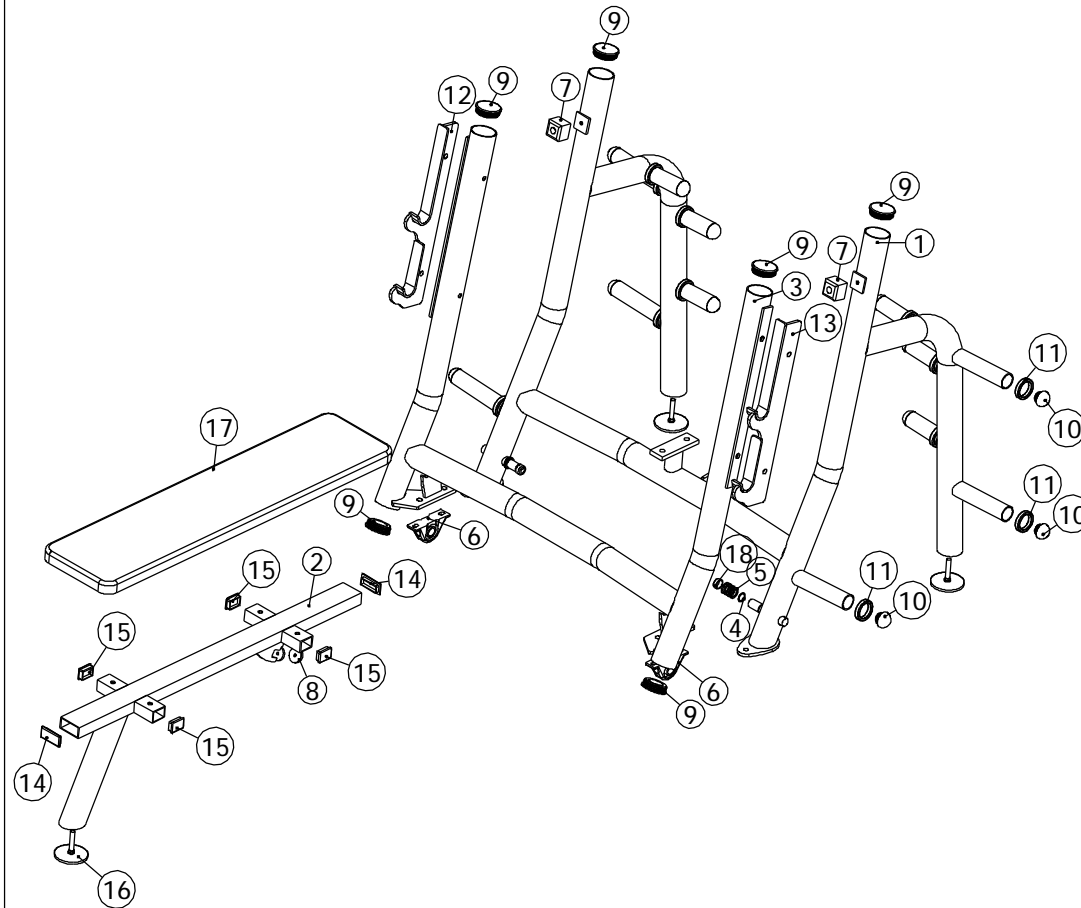


ITEM NO.	QTY.	PART NO.	DESCRIPTION
1	1	101-697	Main Frame
2	1	101-698	M78 SEAT FRAME
3	1	101-699	Breaker Frame
4	2	819-316	1" Ext. SNAP RING
5	8	819-124	1 21/64" O.D. x 1 1/64" I.D. 14GA
6	2	851-317	1" PILLOW BLOCK
7	2	858-260	2" x 2" RUBBER BUMMPER
8	1	838-223	HALF-ROUND RUBBER BUMPER
9	6	850-045	3" ROUND END CAP
10	12	850-030	Bullet End Cap
11	12	858-253	2 1/2"OD x 1 7/8"ID RUBBER BUMPER - 1/2"
12	1	339-072	M78/678 CHROMED TAKE OFF
13	1	339-073	M78/678 CHROMED TAKE OFF
14	2	850-011	1 1/2" x 3" END CAP
15	4	850-010	1 1/2" X 2" END CAP
16	3	833-129	4" FOOT (LONG)
17	1	900-020	FOAM - 1 1/2" 10 WEIGHT
18	2	850-012	1" Vinyl Cap



<p>This document contains information proprietary to Magnum Fitness Systems. It is submitted in confidence and is to be used solely for the purpose for which it is furnished. This document and such information is not to be reproduced, transmitted, or used in whole or part without written authorization.</p>	<p>TOLERANCES: + 0.000" - 1/16"</p>	<p><b>MAGNUM FITNESS SYSTEMS</b> 2201 12th. Avenue S. Milwaukee, WI, 53172</p>		
	<p>UNLESS OTHERWISE SPECIFIED DIMENSIONS ARE IN INCHES.</p>	<p>TITLE: A678 - Breaker Bench Press</p>		
<p>DRAWN BY: Josh Ellis</p>	<p>DATE: 07/09/07</p>	<p>PART NO. xxx-xxx</p>	<p>JOB NO. XXXXXXXXX</p>	<p>REV: 1</p>
<p>FILE LOCATION: C:\Cad Drawings\Solid Works\</p>				<p>1 OF 2</p>



This document contains information proprietary to Magnum Fitness Systems. It is submitted in confidence and is to be used solely for the purpose for which it is furnished. This document and such information is not to be reproduced, transmitted, or used in whole or part without written authorization.

TOLERANCES: + 0.000"  
- 1/16"

**MAGNUM FITNESS SYSTEMS**  
2201 12th. Avenue  
S. Milwaukee, WI, 53172

UNLESS OTHERWISE SPECIFIED  
DIMENSIONS ARE IN INCHES.

TITLE: A678 - Breaker Bench Press

DRAWN BY:  
Josh Ellis

DATE:  
07/09/07

PART NO.  
xxx-xxx

JOB NO.  
XXXXXXXX

REV:  
1

FILE LOCATION: C:\Cad Drawings\Solid Works\

2 OF 2