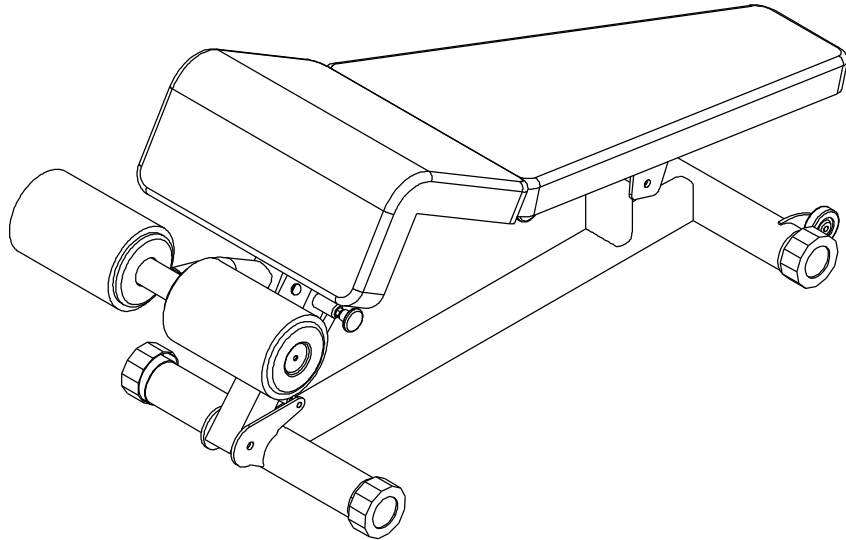
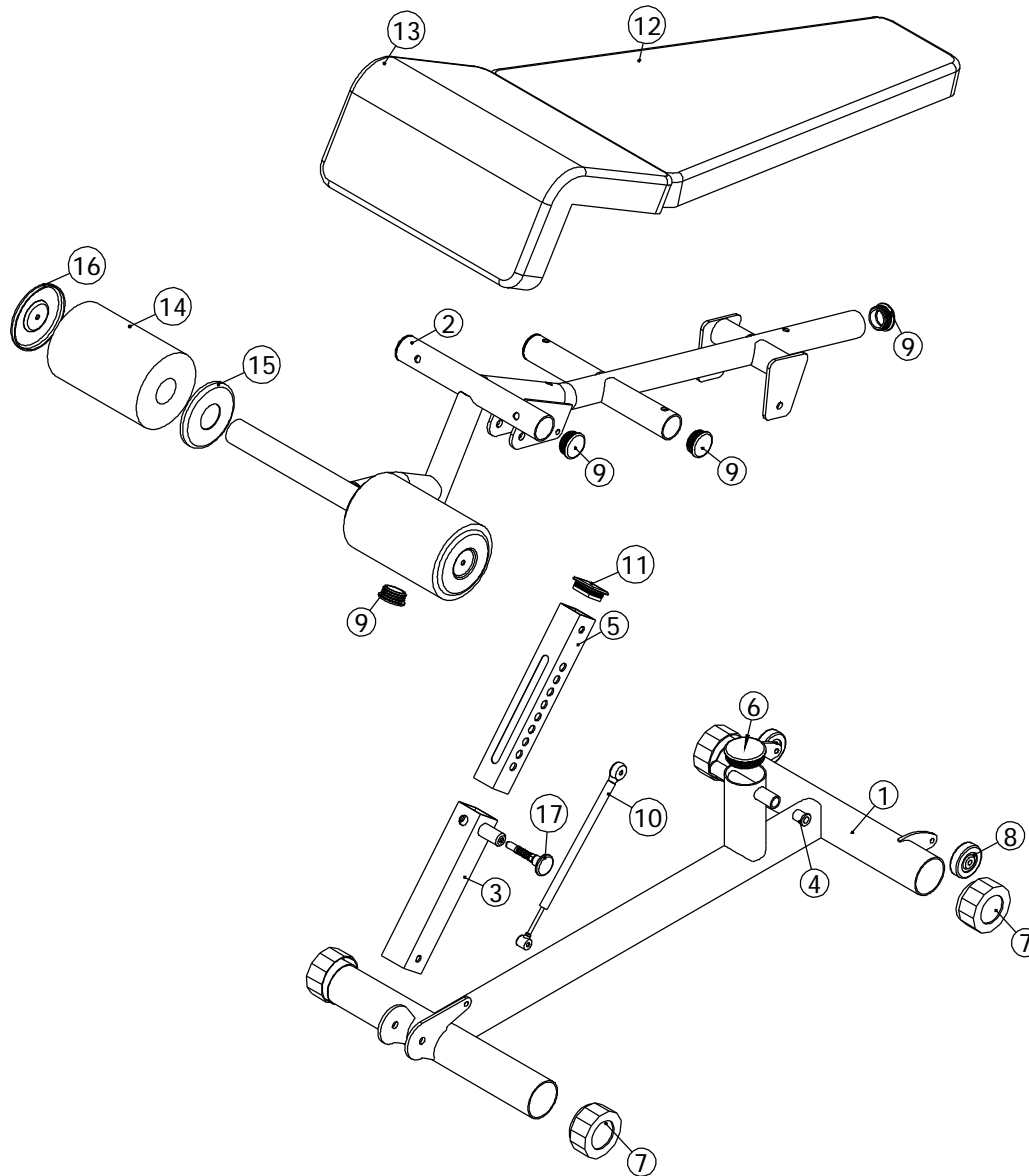


ITEM NO.	QTY.	PART NO.	DESCRIPTION
1	1	101-561	Main Frame
2	1	101-562	Frame - Top
3	1	100-638	ADJUSTMENT TUBE
4	2	851-505	Flange Bushing - 3/4"OD x 1/2"ID
5	1	339-910	Chrome Slide
6	1	850-045	3" ROUND END CAP
7	4	850-061	3" Hex Foot
8	2	850-507	2 1/2" Wheel
9	6	850-035	2" ROUND END CAP
10	1	852-826	SHOCK
11	1	850-004	2" x 2" END CAP
12	1	900-017	Upholstery - Back Pad
13	1	900-018	Upholstery - Bent Pad
14	2	902-007	9" ROLLER PAD
15	2	836-215	ROLLER END CAP w/ 2" HOLE
16	2	836-216	ROLLER END CAP w/ 5/16" HOLE
17	1	101-140	SPRING PIN ASSEMBLY



<p>This document contains information proprietary to Magnum Fitness Systems. It is submitted in confidence and is to be used solely for the purpose for which it is furnished. This document and such information is not to be reproduced, transmitted, or used in whole or part without written authorization.</p>	<p>TOLERANCES: + 0.000" - 1/16"</p>	<p>MAGNUM FITNESS SYSTEMS 2201 12th. Avenue S. Milwaukee, WI, 53172</p>		
	<p>UNLESS OTHERWISE SPECIFIED DIMENSIONS ARE IN INCHES.</p>	<p>TITLE: A61 - Adjustable Decline / Sit Up</p>		
<p>DRAWN BY: Josh Ellis</p>	<p>DATE: 6/28/07</p>	<p>PART NO. xxx-xxx</p>	<p>JOB NO. XXXXXXXX</p>	<p>REV: 1</p>
<p>FILE LOCATION: C:\Cad Drawings\Solid Works\</p>				<p>1 OF 2</p>



This document contains information proprietary to Magnum Fitness Systems. It is submitted in confidence and is to be used solely for the purpose for which it is furnished. This document and such information is not to be reproduced, transmitted, or used in whole or part without written authorization.

TOLERANCES: + 0.000"
- 1/16"

UNLESS OTHERWISE SPECIFIED
DIMENSIONS ARE IN INCHES.

DRAWN BY:
Josh Ellis

DATE:
06/28/07

PART NO.
xxx-xxx

JOB NO.
XXXXXXXX

REV:
1

MAGNUM FITNESS SYSTEMS

2201 12th. Avenue
S. Milwaukee, WI, 53172

TITLE: A61 - Adjustable Decline / Sit Up

FILE LOCATION: C:\Cad Drawings\Solid Works\

2 OF 2