

This document contains information proprietary to Magnum Fitness Systems. It is submitted in confidence and is to be used solely for the purpose for which it is furnished. This document and such information is not to be reproduced, transmitted, or used in whole or part without written authorization.

TOLERANCES: + 0.000"
- 1/16"

MAGNUM FITNESS SYSTEMS

2201 12th. Avenue
S. Milwaukee, WI, 53172

TITLE: 2207 - Ab Crunch

UNLESS OTHERWISE SPECIFIED
DIMENSIONS ARE IN INCHES.

DRAWN BY:
R. Degenhardt

DATE:
02/03/05

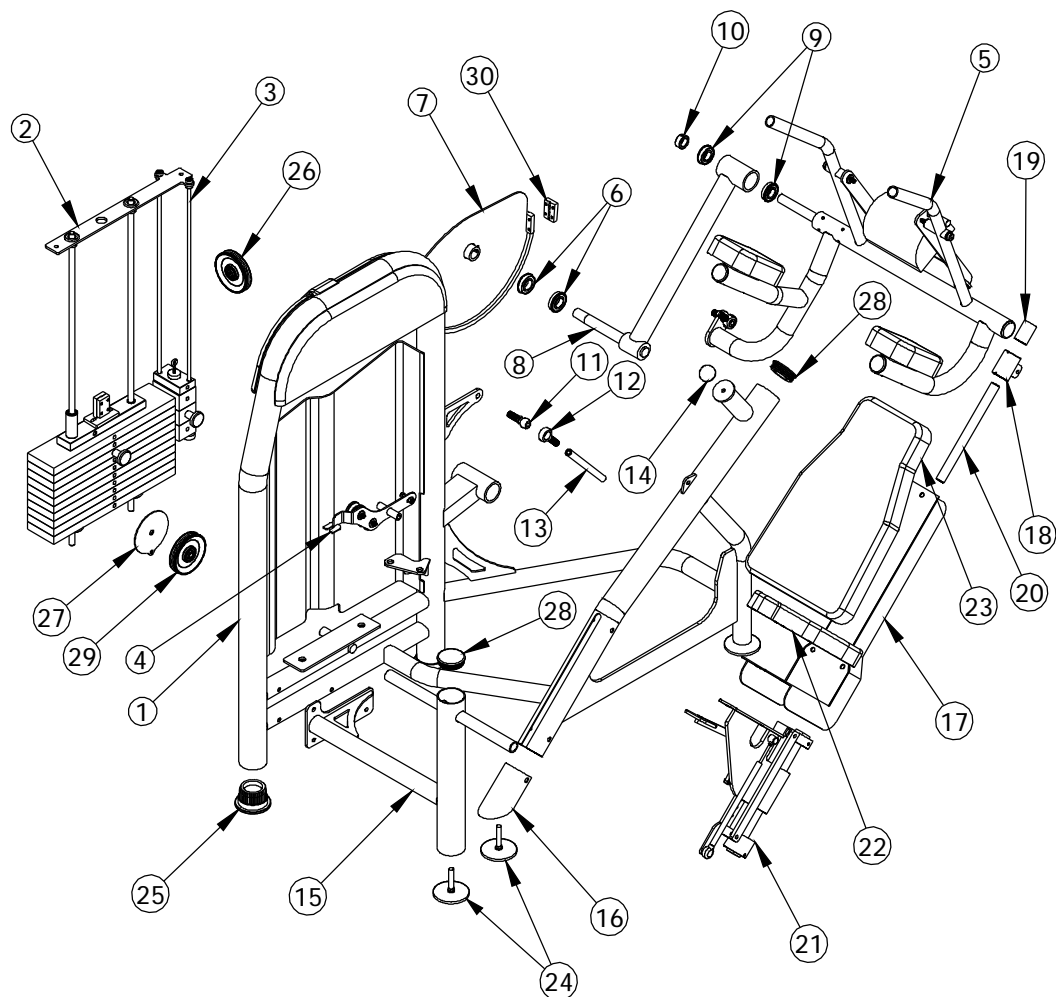
PART NO.
xxx-xxx

JOB NO.
XXXXXXXX

REV:
1

FILE LOCATION: C:\Cad Drawings\Solid Works\

1 OF 1



This document contains information proprietary to Magnum Fitness Systems. It is submitted in confidence and is to be used solely for the purpose for which it is furnished. This document and such information is not to be reproduced, transmitted, or used in whole or part without written authorization.

TOLERANCES: + 0.000"
- 1/16"

UNLESS OTHERWISE SPECIFIED
DIMENSIONS ARE IN INCHES.

DRAWN BY:
R. Degenhardt

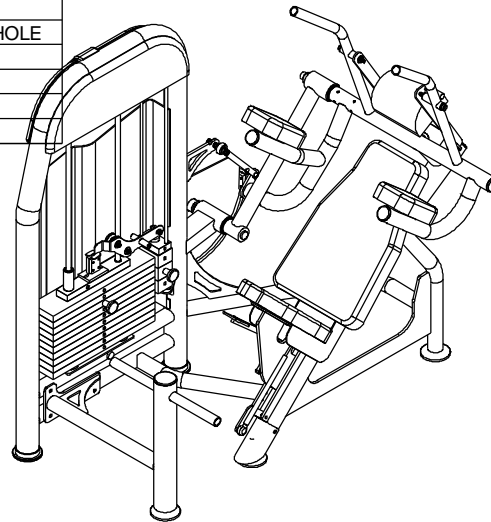
MAGNUM FITNESS SYSTEMS
2201 12th. Avenue
S. Milwaukee, WI, 53172

TITLE: 2207 - Ab Crunch

DATE: 02/03/05	PART NO. xxx-xxx	JOB NO. XXXXXXXX	REV: 1
-------------------	---------------------	---------------------	-----------

FILE LOCATION: C:\Cad Drawings\Solid Works\ 1 OF 1

ITEM NO.	QTY.	PART NO.	DESCRIPTION
1	1	101-232	2207 MAIN FRAME
2	1	101-153	WEIGHT STACK ASSEMBLY
3	1	101-154	MINI-WEIGHT STACK
4	1	101-149	RIGHT BANANA
5	1	101-390	2207 MAIN ARM ASSEMBLY
6	2	851-420	FLANGE BEARING - 1 1/8"
7	1	101-063	2207 CAM ASSEMBLY
8	1	101-228	2207 SUB-ASSEMBLY
9	2	851-416	FLANGE BEARING - 1"
10	1	852-616	SET COLLAR - 1"ID
11	2	855-155m	MALE STUD ROD END
12	2	855-155f	MALE STUD ROD END
13	1	250-281	3/4"OD x 7/16"ID PIPE - 8"
14	1	838-223	HALF-ROUND RUBBER BUMPER
15	1	101-231	2207 SUB-ASSEMBLY
16	1	101-235	2207 SUB-ASSEMBLY
17	1	100-861	2207 SEAT BACK
18	1	100-486	LINEAR BEARING BRACKET
19	1	851-203	1" LINEAR SHAFT BEARING
20	1	851-012	1" LINEAR SHAFT - 12"
21	1	101-102	SHORT SEAT BOX (LEFT)
22	1	901-007	SEAT PAD
23	1	901-016	3/4" PLYWOOD
24	3	833-129	4" FOOT (LONG)
25	2	850-056	3" FOOT
26	1	853-303	4" CABLE PULLEY - 3/8" NARROW HOLE
27	1	501-125	1/8" PLASMA
28	2	850-045	3" ROUND END CAP
29	1	853-300	4" CABLE PULLEY - 1/2" NARROW HOLE
30	1	339-714	1/2" x 1 1/2" F.S. - 2 1/4"
31	1	836-256	xxx
32	1	836-253	xxx
34	1	836-255	GUARD - UPPER PULLEY



This document contains information proprietary to Magnum Fitness Systems. It is submitted in confidence and is to be used solely for the purpose for which it is furnished. This document and such information is not to be reproduced, transmitted, or used in whole or part without written authorization.

TOLERANCES: + 0.000"
- 1/16"

UNLESS OTHERWISE SPECIFIED
DIMENSIONS ARE IN INCHES.

DRAWN BY:
R. Degenhardt

MAGNUM FITNESS SYSTEMS
2201 12th. Avenue
S. Milwaukee, WI, 53172

TITLE: 2207 - Ab Crunch

DATE: 02/03/05	PART NO. xxx-xxx	JOB NO. XXXXXXXX	REV: 1
-------------------	---------------------	---------------------	-----------

FILE LOCATION: C:\Cad Drawings\Solid Works\
1 OF 1