

This document contains information proprietary to Magnum Fitness Systems. It is submitted in confidence and is to be used solely for the purpose for which it is furnished. This document and such information is not to be reproduced, transmitted, or used in whole or part without written authorization.

TOLERANCES: + 0.000"
- 1/16"

UNLESS OTHERWISE SPECIFIED
DIMENSIONS ARE IN INCHES.

DRAWN BY:
R. Degenhardt

MAGNUM FITNESS SYSTEMS

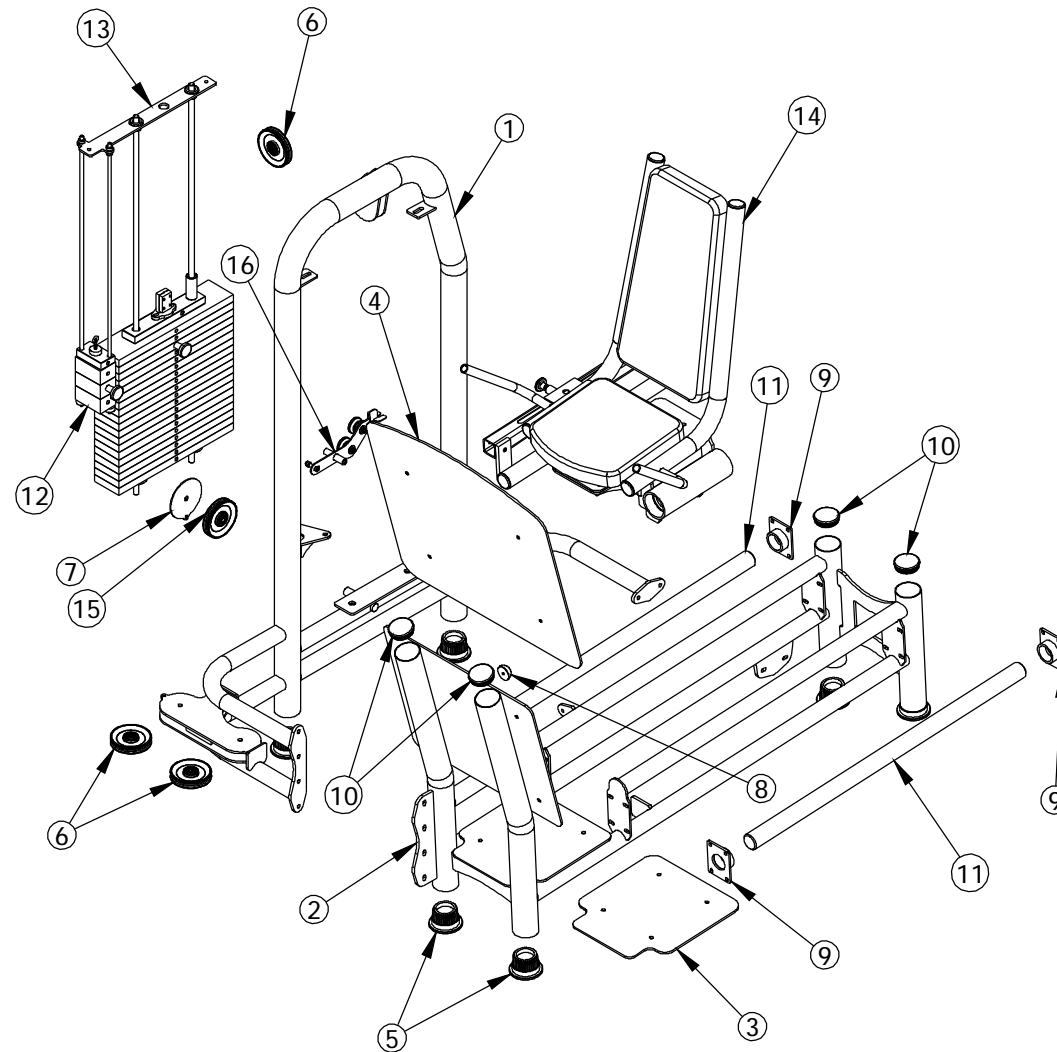
2201 12th. Avenue
S. Milwaukee, WI, 53172

TITLE: 2203 - Seated Leg Press

DATE: 02/03/05	PART NO. xxx-xxx	JOB NO. XXXXXXXX	REV: 1
-------------------	---------------------	---------------------	-----------

FILE LOCATION: C:\Cad Drawings\Solid Works\

1 OF 1



This document contains information proprietary to Magnum Fitness Systems. It is submitted in confidence and is to be used solely for the purpose for which it is furnished. This document and such information is not to be reproduced, transmitted, or used in whole or part without written authorization.

TOLERANCES: + 0.000"
- 1/16"

MAGNUM FITNESS SYSTEMS
2201 12th. Avenue
S. Milwaukee, WI, 53172

UNLESS OTHERWISE SPECIFIED
DIMENSIONS ARE IN INCHES.

TITLE: 2203 - Seated Leg Press

DRAWN BY:
R. Degenhardt

DATE:
02/03/05

PART NO.
xxx-xxx

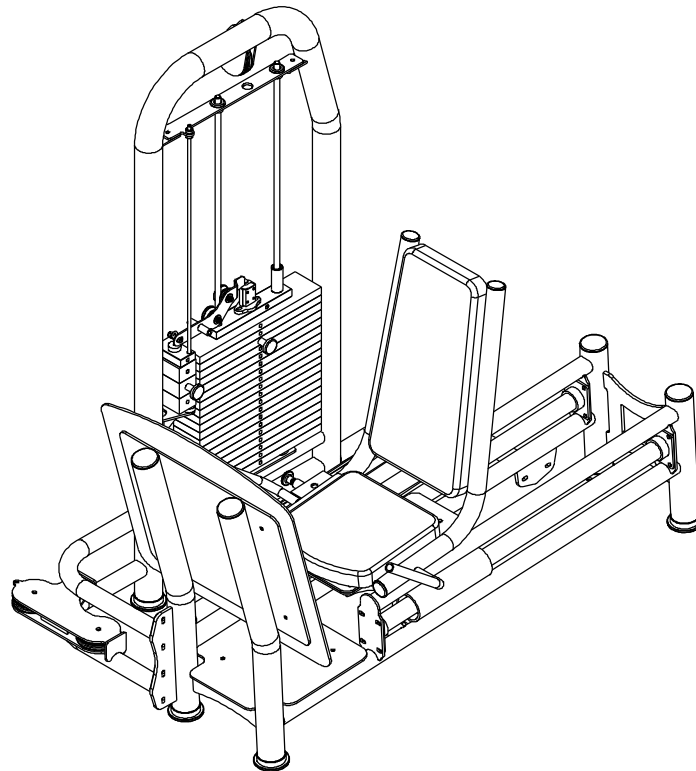
JOB NO.
XXXXXXXX

REV:
1

FILE LOCATION: C:\Cad Drawings\Solid Works\

1 OF 1

ITEM NO.	QTY.	PART NO.	DESCRIPTION
1	1	101-016	MAIN FRAME
2	1	101-017	MAIN FRAME
3	1	501-180	DIAMOND PLATE
4	1	501-181	D-PLATE
5	6	850-056	3" FOOT
6	3	853-303	4" CABLE PULLEY - 3/8" NARROW HOLE
7	1	501-125	1/8" PLASMA
8	1	838-223	HALF-ROUND RUBBER BUMPER
9	4	100-517	LINEAR SHAFT BRACKET
10	4	850-045	3" ROUND END CAP
11	2	851-130	2" LINEAR SHAFT - 44"
12	1	101-306	MINI WEIGHT STACK ASSEMBLY
13	1	101-305	WEIGHT STACK ASSEMBLY
14	1	101-389	2203 SEAT ASSEMBLY
15	1	853-300	4" CABLE PULLEY - 1/2" NARROW HOLE
16	1	101-148	LEFT BANANA ASSEMBLY



This document contains information proprietary to Magnum Fitness Systems. It is submitted in confidence and is to be used solely for the purpose for which it is furnished. This document and such information is not to be reproduced, transmitted, or used in whole or part without written authorization.

TOLERANCES: + 0.000"
- 1/16"

UNLESS OTHERWISE SPECIFIED
DIMENSIONS ARE IN INCHES.

DRAWN BY:
R. Degenhardt

MAGNUM FITNESS SYSTEMS

2201 12th. Avenue
S. Milwaukee, WI, 53172

TITLE: 2203 - Seated Leg Press

DATE: 02/03/05	PART NO. xxx-xxx	JOB NO. XXXXXXXX	REV: 1
-------------------	---------------------	---------------------	-----------

FILE LOCATION: C:\Cad Drawings\Solid Works\

1 OF 1